

NMDOT

# New Mexico Inland Ports

Charles Remkes, P.E.  
Intelligent Transportation Systems Manager  
New Mexico Department of Transportation

Marcos Gonzales, MBA  
Executive Development Officer  
Bernalillo County



# Designating Inland Ports

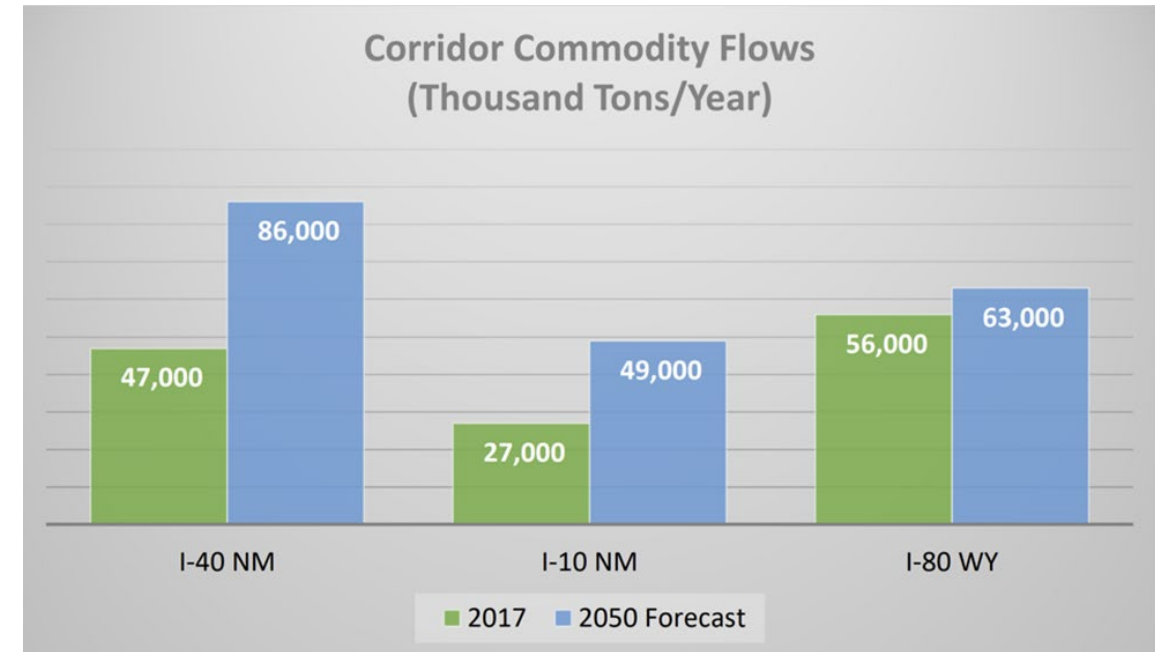


- Both domestic and international freight logistics have grown more complex.
  - \*Inland ports play a pivotal role in optimizing freight flows, expanding supply chain capacity, and fostering long-term resilience.
  - This became apparent during the supply chain interruptions and freight management during the Covid epidemic.
  - This has prompted the need of inland ports to play a more prominent role in the National Freight Strategic Plan (NFSP).
  - In recognition of this, the USDOT's targeted funding toward activities to strengthen the NFSP which includes elements for inland port development and improvements.
- \*Inland port is a transportation terminal that is an inland extension of one or more seaports, connected by rail or highway service to the conventional port.

# I-40 Corridor Cargo Level and Growth



- ✓ I-40 is the fastest growing transcontinental cargo corridor
- ✓ Largest in tonnage
- ✓ Busiest truck route
- ✓ Umbilical cord between Asian markets, West Coast seaports complex and fastest growing US markets in Texas and US South



Source: Freight Analysis Framework 5.0, Federal Highway Administration, Bureau of Transportation Statistics





# Freight Analysis Framework Estimates



New Mexico DEPARTMENT OF  
**TRANSPORTATION**  
MOBILITY FOR EVERYONE

Estimated FAF Flow for Trucks Passing Through New Mexico on National Highway System 2017





# I-40 TradePort Corridor Feeder Shed

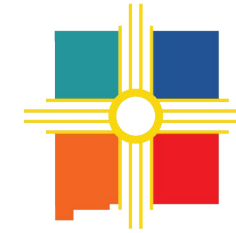
**I-40 TradePort Corridor**  
High-Efficiency National Logistics System

# 2025 HB 19 - TRADE PORTS DEVELOPMENT ACT



- Enables the state and its political subdivisions to develop inland trade ports.
- Creates a process for designating “trade port districts”
- Makes funding available through a new trade ports development fund.
- Outlines the requirements entities must for funding eligibility
- Administered by the New Mexico Economic Development Department (NMEDD).
- Adds an exemption to the New Mexico procurement code for agreements and contracts entered into pursuant to the legislation.

# Albuquerque Regional Trade Port



New Mexico DEPARTMENT OF  
**TRANSPORTATION**  
MOBILITY FOR EVERYONE

The Albuquerque Regional Trade Port is being developed as a multi-entity coalition effort called the I-40 TradePort Corridor® (I40TPC) that includes:

- **Port of Los Angeles** – Global logistics hub, transloading center, clean energy
- **Kingman, Arizona** – Operational hub, small intermodal, light manufacturing, clean energy
- **Winslow, Arizona** – Operational hub, heavy manufacturing, clean energy
- **Albuquerque, New Mexico** (Bernalillo County, Sandoval County, Village of Los Lunas) – Major logistics center, clean energy, major investment hub

The I40TPC anticipates creating approximately 60,000 new jobs at the New Mexico and Arizona hubs. It'll support logistical improvements, clean energy fueling and charging, and industrial infrastructure at strategic locations that will provide new flexibility, cost savings, and reliability to shippers and freight management companies.

## OBJECTIVES

- Contribute to a more efficient national supply chain system
- Reduce green house gas emissions and air criteria pollutants
- Significantly increase economic competitiveness, especially in rural/challenged areas
- Built around social equity and environmental justice principles
- Promote collaboration and partnership across public and private sectors

It will be a first-of-its-kind multistate clean energy/logistics/investment system that involves public and private partnerships. Not a public project, but a project catalyzed by public and private interests and delivered as a private-led investment plan.



# I-40 TradePort Corridor: ABQ Hub Phase 1



TradePort ABQ

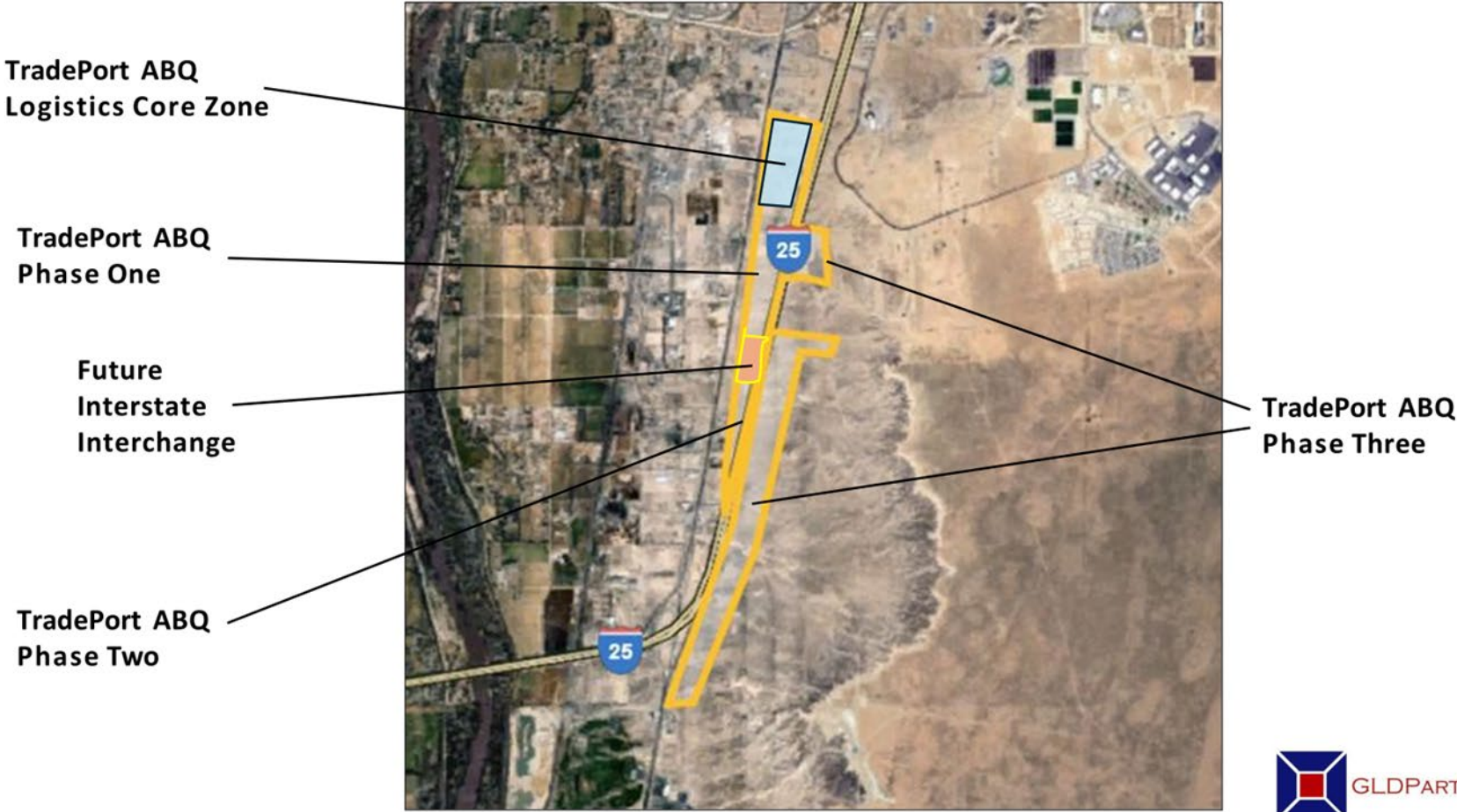




# I-40 TradePort Corridor: ABQ Hub Potential FULL Phase 1 Scope Phase 1



New Mexico DEPARTMENT OF  
**TRANSPORTATION**  
MOBILITY FOR EVERYONE



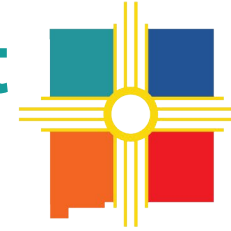
# TradePort Corridor: ABQ HUB

## Public Investment



	Project Expenditure	Federal Investment	Local Investment
New Mexico Coalition (Sandoval Co. & BernCo)	Grant proposal for RIA 2023		\$70,000
New Mexico Coalition (Sandoval Co., BernCo & Village of Los Lunas)	Federal Lobbying contribution for all of I-40 TradePort Corridor		\$150,000
USDOT RIA Round 3 Awardee	Regional Infrastructure Accelerator - system planning - full I40TPC	\$974,000	
NMDOT	Design - utilities planning - ABQ Hubs		\$1,500,000
SMART Stage 1.	Data technology planning - full I40TPC	\$1,939,762	
RAISE/BUILD Grant	Engineering/planning funds - full I40TPC	\$15,000,000 (Awarded awaiting T&C)	
Rural Autonomous Vehicle Grant	UC Berkeley PATH grant w/ I40TPC/ UNM/ Laguna Pueblo (+ \$10MM private match)	\$10,000,000 (Awarded awaiting T&C)	
USDOT RIA Round 4 Award	RIA#2 request by the City of Winslow	\$1,200,000 (Awaiting award notice)	

# Gallup/McKinley County TradePort



New Mexico DEPARTMENT OF  
**TRANSPORTATION**  
MOBILITY FOR EVERYONE

The Gallup/McKinley County TradePort is a collaborative public-private effort between the Greater Gallup Economic Development Corporation (GGEDC) and Gallup/McKinley County. Its intent is to transform the region into a hub for logistics, trade, and industrial growth that will capitalize on the region's strategic location and infrastructure to attract investment and create sustainable economic opportunities.

The effort is multi-faceted that has included planning and design components for:

## **TradePort Market Analysis**

Agribusiness, Steel & Aluminum Manufacturing, Warehousing & Logistics, Advanced Manufacturing, Autonomous Vehicle Research & Development, and Hydrogen Development

## **Inland Port Layout**

Strategic Land Use Planning, Infrastructure Enhancements, Rail and Roadway Expansion, Foreign Trade Zone Designation

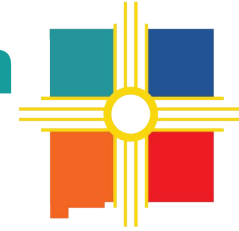
## **Autonomous Vehicles**

- Provide a controlled environment for autonomous vehicle testing; Serve manufacturers, tech firms, and research institutions; Generate jobs in engineering, security, and track maintenance

## **Hydrogen Fueling Hub**

Support clean energy initiatives  
Establish fueling stations along key transport corridors

# NMDOT - Legislative Appropriation Laws of 2022 HB 2 Ch. 54 Sec. 9



New Mexico DEPARTMENT OF  
**TRANSPORTATION**  
MOBILITY FOR EVERYONE

The NMDOT is committed to promoting economic development and strengthening the state's inland transportation network through participation and strategic investments that enhance connectivity, economic growth, and community access. The NMDOT has funded the following grants to both the Gallup and Bernalillo County TradePort projects:

- \$2.5M Design and Engineering for Autonomous Commercial Truck Testing Site
- \$1.0M Gallup TradePort Analysis
- \$1.0M Design and Engineering for Commercial Truck Testing Technology
- \$1.0M Plan & Design for Ports of Los Angeles and Long Beach, and Inland Port
- \$1.5M Prepare a design analysis report in support of the I-40 TradePort Corridor



NMDOT

# Questions/Requests

Charles Remkes  
505-490-3308

Marcos A. Gonzales  
505-468-1279

