

# Village of Los Lunas Economic Outlook

Economic & Rural Development & Policy Committee  
Monday, August 11, 2025

Victoria Archuleta, MBA  
Senior Economic Developer & Film Liaison



# LOS LUNAS

**Our roots run deep and we cultivate our businesses with care**



**Established in 1716 and incorporated in 1928, Los Lunas has rapidly grown into an economic powerhouse in the greater metro area and Central New Mexico.**

**Our largest private employers are logistics & manufacturers:**

- **Los Lunas Meta Data Center Campus**
- **Walmart Distribution Center (25 years)**
- **Wall Colmonoy**
- **Niagara Bottling**
- **Fresenius Medical Care**
- **Accurate Machine & Tool**
- **Amazon Fulfillment Center**

# COMMUNITY ASSETS

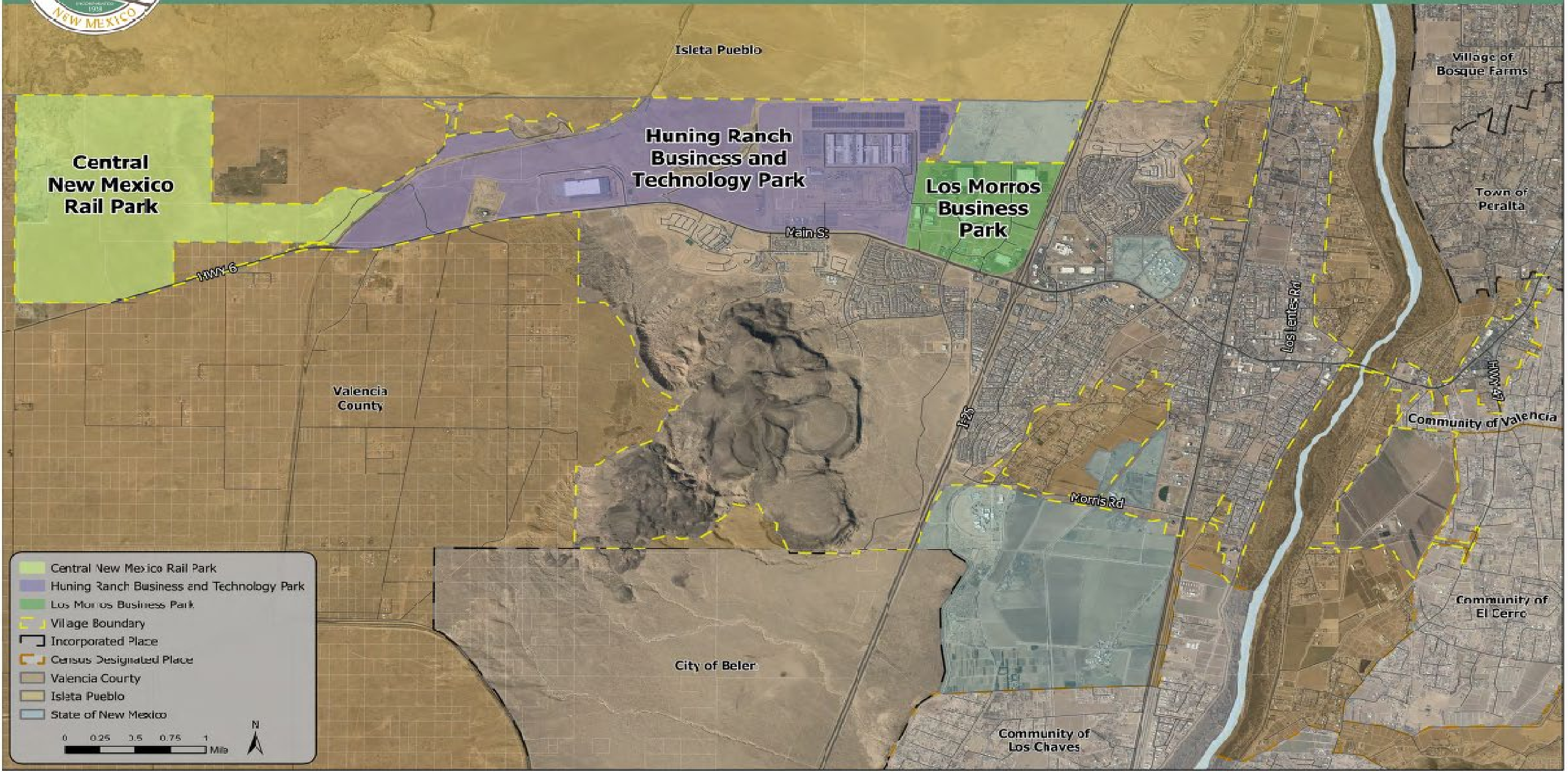


Pro-Business Community  
Availability of industrial sites  
Easy transportation access  
Available workforce  
Available housing

Growing tech ecosystem  
Established business incubator  
University satellite campus (2)  
Quality of life  
Growing Population  
Proximity to Albuquerque & SNL



# VILLAGE OF LOS LUNAS BUSINESS PARKS



- Central New Mexico Rail Park
- Huning Ranch Business and Technology Park
- Los Morros Business Park
- Village Boundary
- Incorporated Place
- Census Designated Place
- Valencia County
- Isleta Pueblo
- State of New Mexico

0 0.25 0.5 0.75 1 Miles



# NEW INFRASTRUCTURE



## Over 50 active projects

- I -25 Interchange
- Water & Sewer upgrades & extension



# LOS LUNAS BLVD

## Los Lunas Blvd

- Two new bridges & ramps
- Allows access to Los Senderos development



## Los Lunas Blvd

- Multi-use trail
- Allows for improved traffic circulation





## Los Lunas Blvd

- New intersection at HWY 314
- Improved rail crossing with pedestrian and vehicle gates





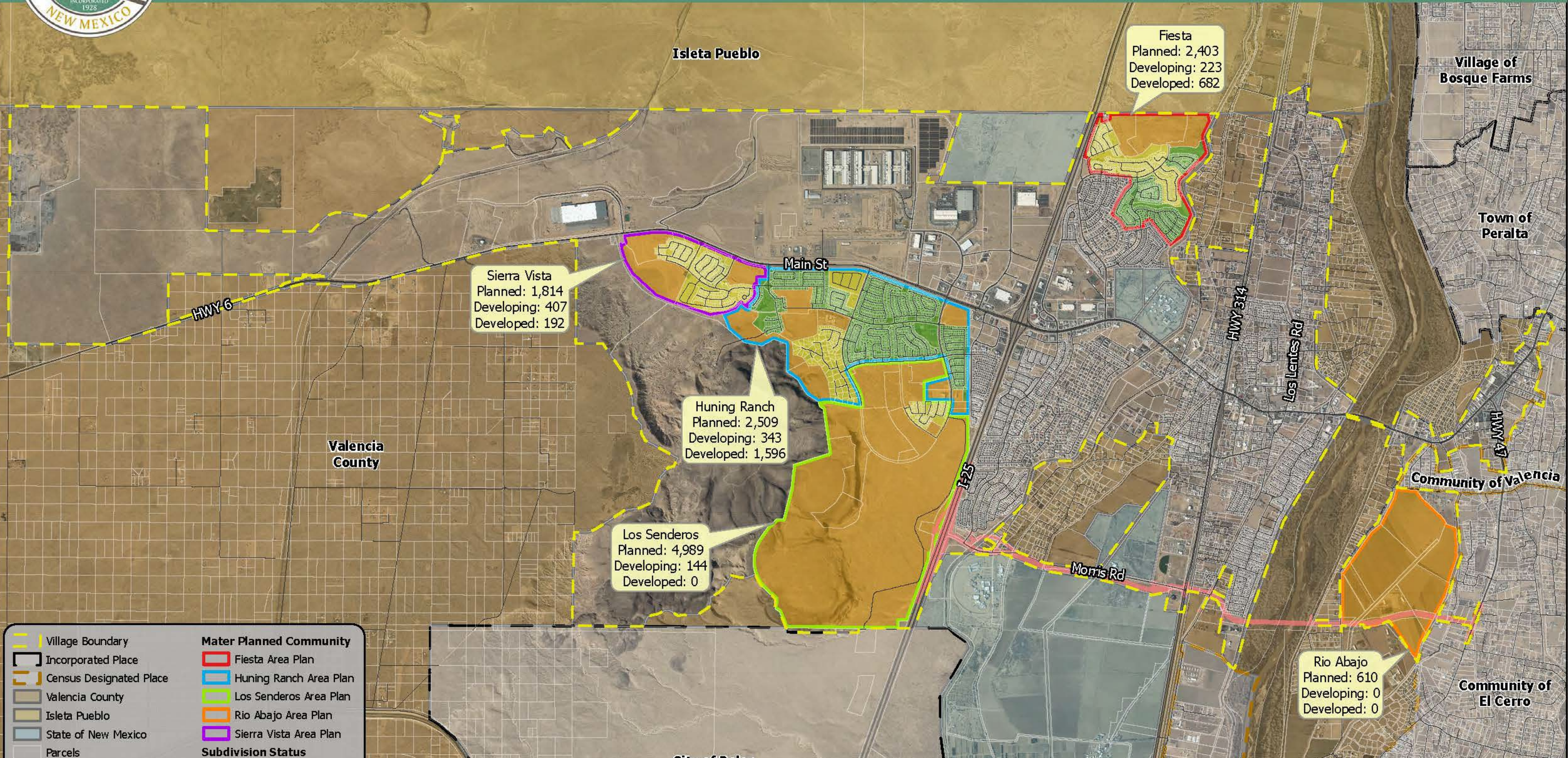
## Los Lunas Blvd

- 4 Lane 2,000 ft bridge
- Expands access to HWY 47 across Valencia County





# VILLAGE OF LOS LUNAS MASTER PLANNED COMMUNITIES



Village Boundary	<b>Master Planned Community</b>
Incorporated Place	Fiesta Area Plan
Census Designated Place	Huning Ranch Area Plan
Valencia County	Los Senderos Area Plan
Isleta Pueblo	Rio Abajo Area Plan
State of New Mexico	Sierra Vista Area Plan
Parcels	<b>Subdivision Status</b>



facebook

# WORKFORCE DATA

Population of approximately **930,850** (within a 60-minute commute)

Labor force of approximately **351,574** (within a 60-min commute)

**32.0%** have a Bachelor's degree or higher which compares with **33.5%** in the nation

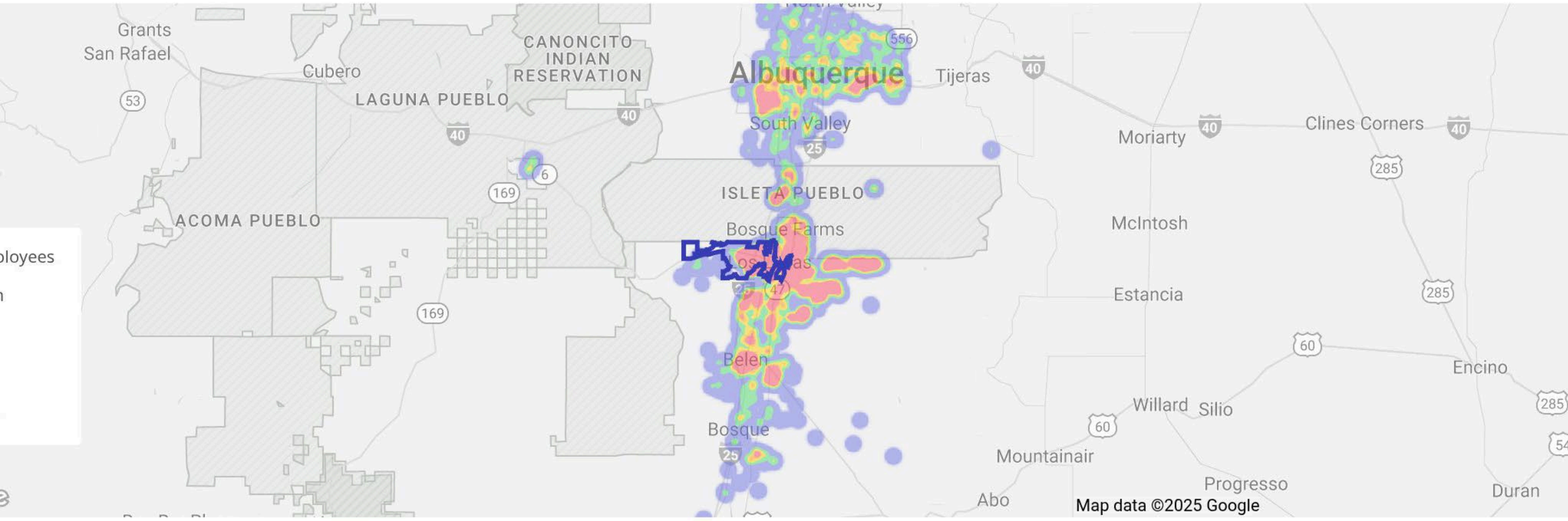
Average household income: **\$85,772** (87031) and rising to \$99,283 by 2029

2019-2024 the village had **13% job growth**

**60%** Hispanic/Latinx (Valencia County)

# WORKFORCE DATA

Albuquerque  
New Mexico



Locations are obfuscated for privacy and randomly placed within a census block. They do not represent actual home addresses.



VILLAGE *of*  
**LOS LUNAS**  
NEW MEXICO

VICTORIA ARCHULETA, MBA  
SENIOR ECONOMIC DEVELOPER  
ARCHULETAV@LOSLUNASNM.GOV  
C: 505-859-0858  
[www.loslunasnm.gov](http://www.loslunasnm.gov)