

The Mancos Gallup Environmental Impact Statement/Resource Management Plan Amendment

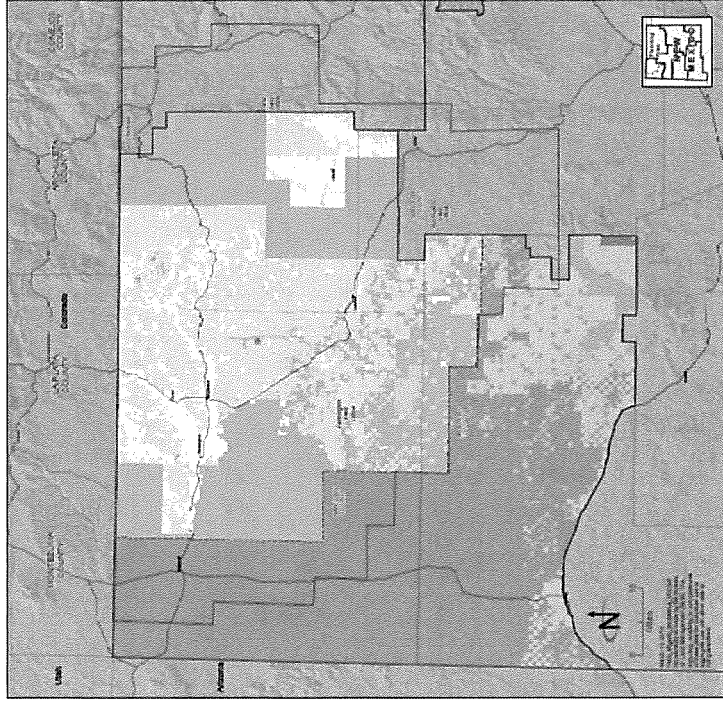
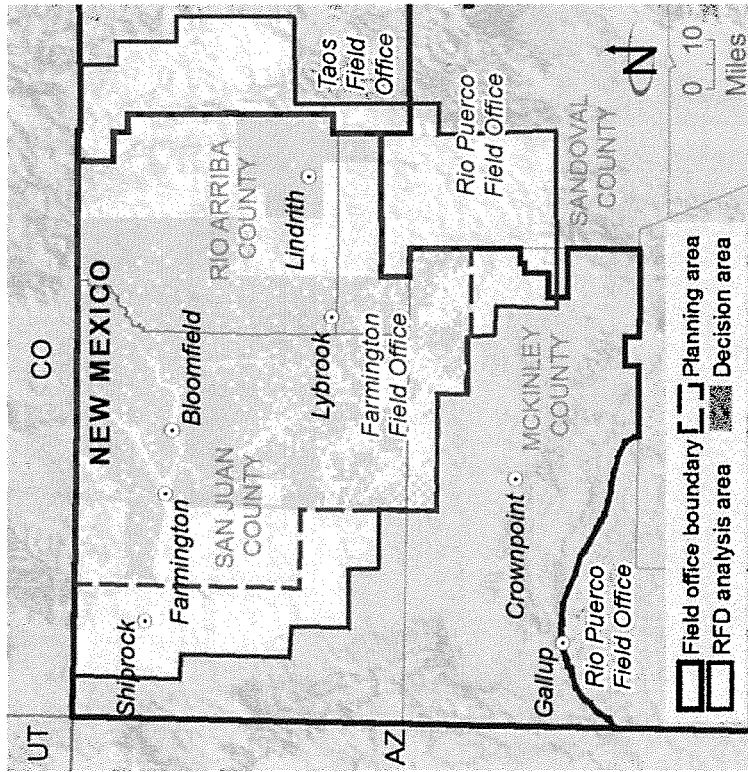


What is the RMPA/EIS?

- The Bureau of Land Management Farmington Field Office and Bureau of Indian Affairs Navajo Region intend to prepare an Environmental Impact Statement which will also amend the Farmington 2003 Resource Management Plan to address issues relating to oil and gas in the Mancos Shale/Gallup Formation
- The EIS record of decision for the BIA will provide a framework for the agency to make informed leasing decisions for fluid minerals on Tribal Trust and Indian Allotted lands, as well as update leasing stipulations.
- Existing BLM management actions may be updated, removed, or replaced to account for changes in technology, policy, and impacts related to additional development potential

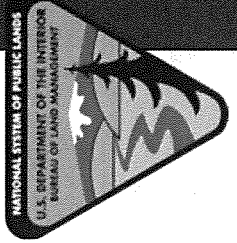


RMPA/EIS Planning Area



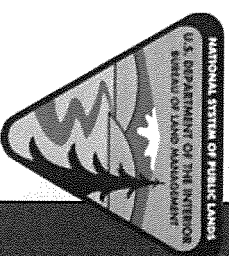
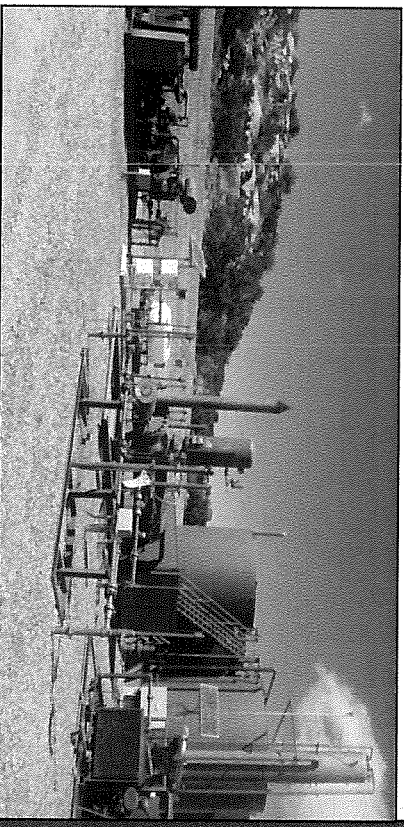
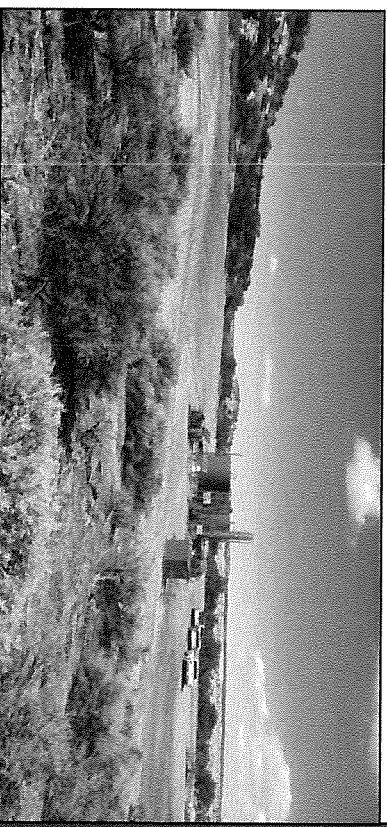
Source: BLM GIS 2014

Fielded surface administration colors are inside the Farmington field office planning area. All other planning area decisions will be made in the RFD area outside the planning area.



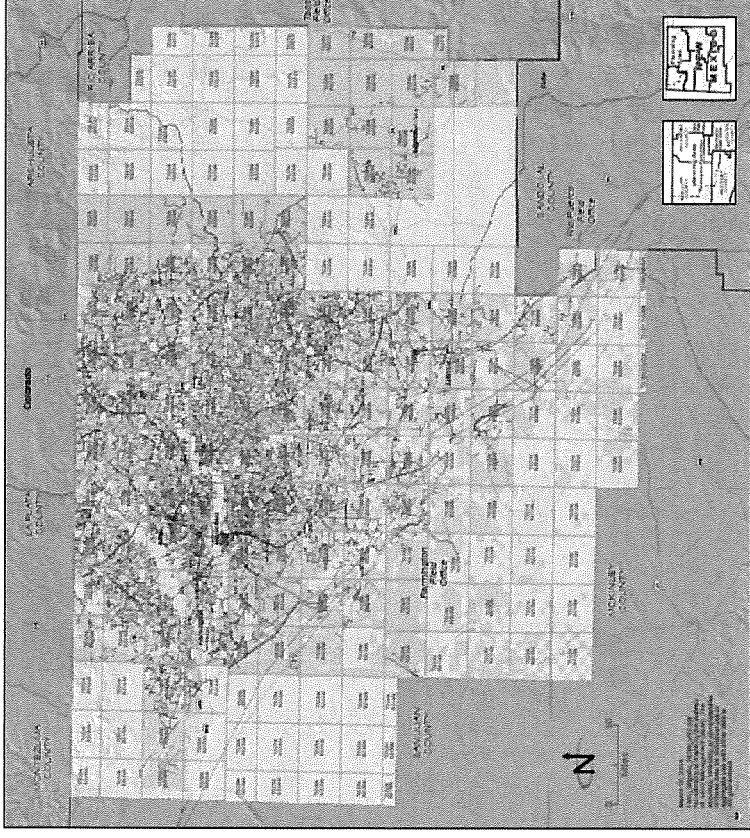
Planning Issue I: Mineral Development

- ❑ Areas available for leasing or unavailable for leasing
- ❑ Stipulations, conditions of approval (COAs), best management practices (BMPs)
- ❑ Management actions necessary to facilitate oil and gas development in the planning area while protecting other resources



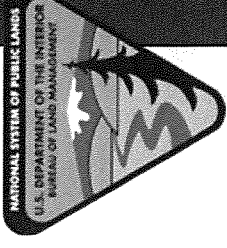
Planning Issue 2: Lands and Realty

- Rights-of-way (ROW) avoidance and exclusion areas
- Utility corridors as needed
- Use stipulations, conditions of approval (COAs), and best management practices (BMPs) to minimize impacts



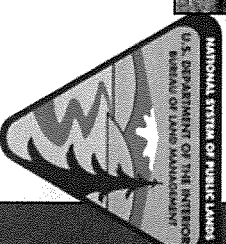
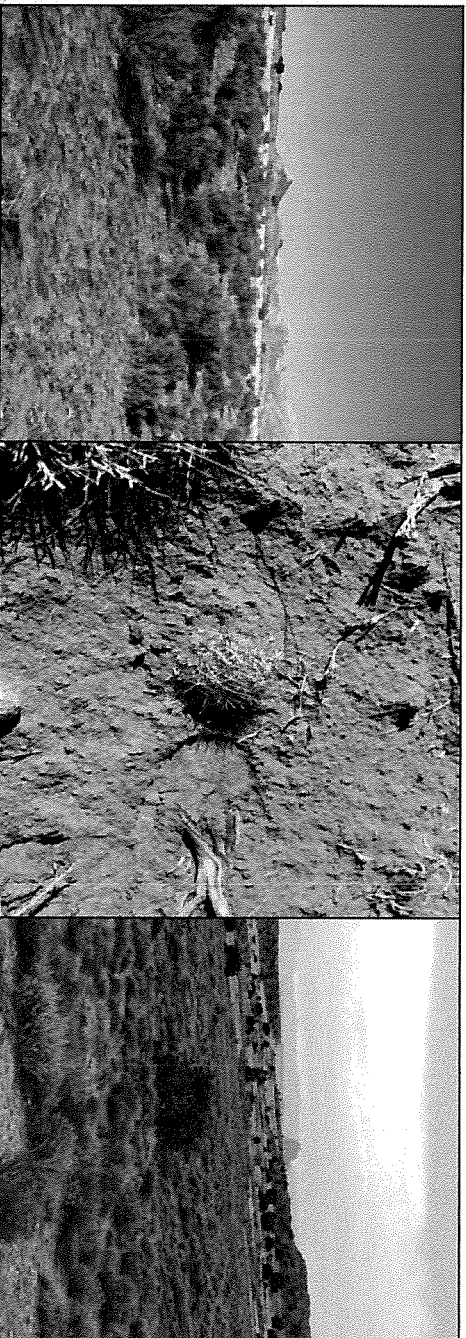
Source: BLM GIS 2014

- Authorized Right-of-Ways
- Oil and gas facilities
- Other energy facilities
- Non-energy facilities
- Fiber optic facilities
- Other
- Decision area
- National Park Service
- Field office boundary
- Planning area



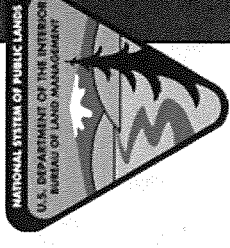
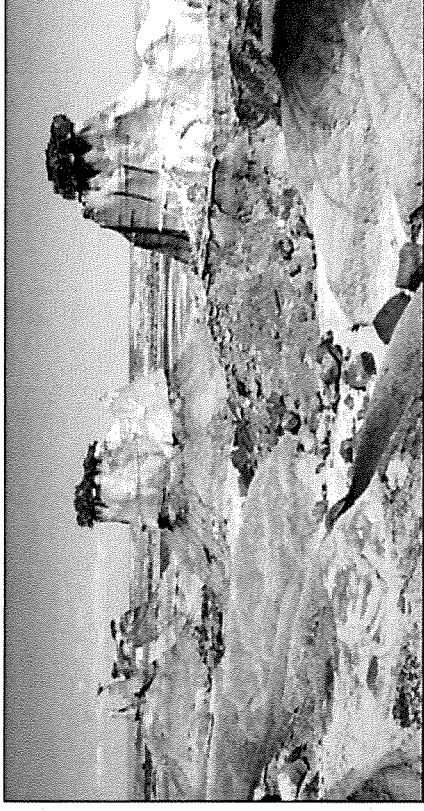
Planning Issue 3: Vegetation Resources

- BLM management for vegetation communities
 - Healthy Lands Initiative
 - BLM Integrated Vegetation Management Manual 1740-2
 - Colorado Plateau Rapid Eco-regional Assessment



Planning Issue 4: Analyze Lands with Wilderness Characteristics

- The BLM will identify lands with wilderness characteristics on BLM lands
- The BLM will consider how to best manage those lands



Master Leasing Plan Nomination

GREATER CHACO LANDSCAPE MASTER LEASING PLAN POTENTIAL MANAGEMENT AREAS

Chaco Core Protection Zones:
Closed to leasing to protect significant cultural resources as well as viewsheds from key observation points within Chaco Culture NHP.

Great North Road Management Area:
Closed to future leasing within ACECs; open to phased leasing with NSO stipulations outside of ACECs.

Community Protection Areas:
Manage leasing and development to minimize impacts on nearby communities and other natural/cultural resources.



Potential MLP Management Areas

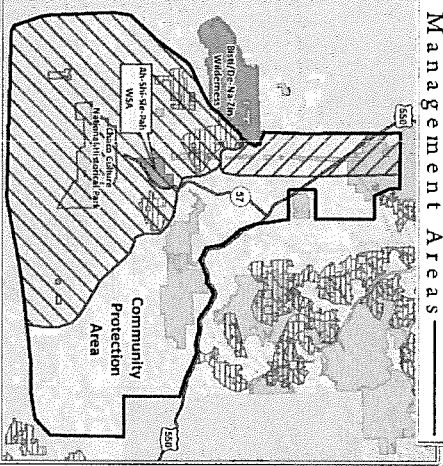
Map Ownership

- Map Boundary
- Chaco Core Protection Zone
- Great North Road Management Area
- MLP Potential Roadless Areas
- Wilderness Study Area
- Designated Wilderness
- BLM Specialty Designated Areas

Bureau of Land Management

- Forest Service
- National Park Service
- Indian Reservation
- State
- Private

Scale: 0 5 10 15 20 Miles



Existing Oil & Gas Leases

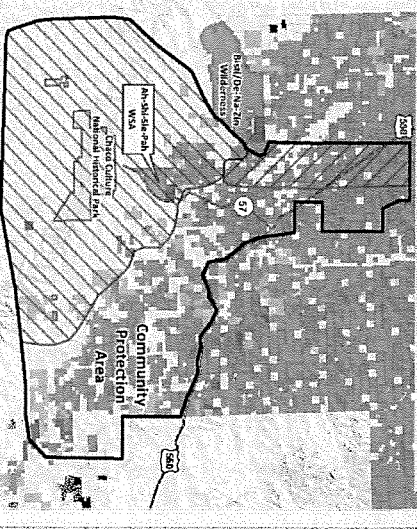
MLP Boundary

- Chaco Core Protection Zone
- Great North Road Management Area
- National Park Service
- Indian Reservation
- State
- Private

Wilderness

- 2001 - 2012
- 2013 - 2016
- 2017 - 2020
- 2021 - 2024

Scale: 0 4 8 12 16 Miles



Cultural Resource Priorities

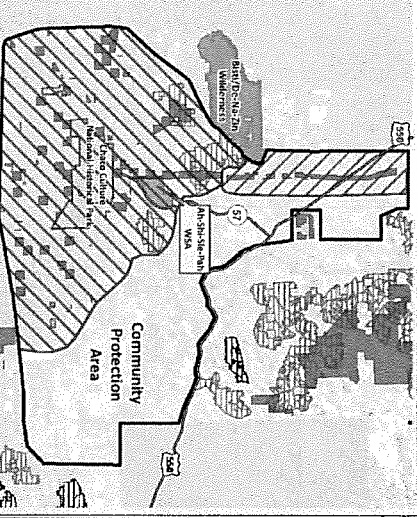
MLP Boundary

- Chaco Core Protection Zone
- Great North Road Management Area
- Cultural Priority Areas
- N.M. Potential Roadless Areas
- Bureau of Land Management
- Forest Service
- National Park Service
- Indian Reservation
- State
- Private

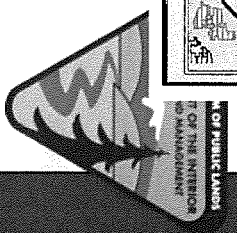
Wilderness

- 2001 - 2012
- 2013 - 2016
- 2017 - 2020
- 2021 - 2024

Scale: 0 4 8 12 16 Miles

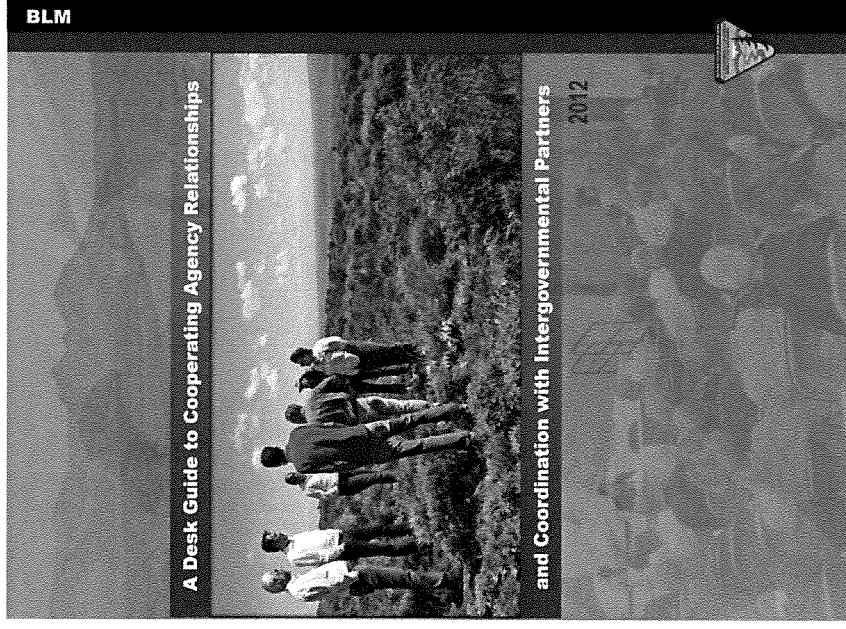


U.S. Department of the Interior, Bureau of Land Management, June 2014. Portions of the document include information from the National System of Public Lands, Copyright 1998-2013, Department of the Interior, U.S. Geological Survey, AZ-02, US, USFS, USFS, USFS.

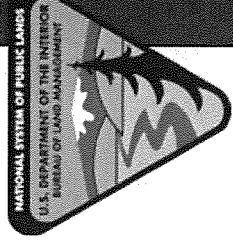


Cooperating Agencies

- 60 federal, tribal, state, and local agencies were invited to join as Cooperating Agencies
- To date, the following agencies have signed memoranda of understanding to become cooperating agencies:
 - National Park Service – Intermountain Region
 - NM Department of Cultural Affairs, Historic Preservation Division
 - NM Department of Game and Fish
 - Santa Fe National Forest and Carson National Forest

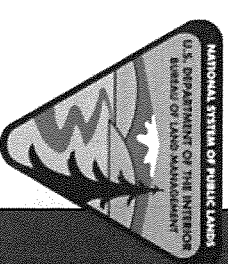


Carson National Forest



Farmington Mancos Gallup Resource Management Plan Amendment (RMPA) and Environmental Impact Statement (EIS)

- The BIA/BLM held 10 Public scoping meetings between November 2016 – February 2017
- These meetings were held in both the Navajo and English Languages
- The meetings were located in various Navajo communities and one at San Juan College in Farmington.



Tribal Outreach

Tribal outreach meetings during the initial scoping period in 2014:

- Nageezi Chapter – April 5, 2014
- Huerfano Chapter – April 22, 2014
- Counselor and Ojo Encino Chapters – April 29, 2014
- Navajo Nation – May 2, 2014
- Hopi Tribe – May 21, 2014
- Lybrook- March 21, 2014



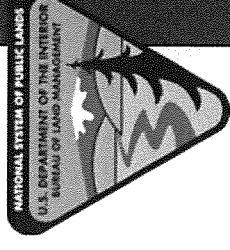
Tribal Outreach, continued

- Additional Outreach Meetings and Efforts
 - Navajo Nation HPD- February 8, 2016
 - Ojo Encino Cooperating Agency Meetings – April 16, 2014; February 20, 2015; February 24, 2015
 - BIA Cooperating Agency Meetings – May 7, 2014
 - Ojo Encino/Counselor/Torreon – March 5, 2015
 - Pueblo of Santa Ana- April 13, 2016
 - Pueblo of San Felipe – April 19, 2016
 - Ojo Encino/Counselor/Torreon – May 18, 2016
 - Southern Pueblo Governors’ Council – June 9, 2016
 - San Juan Pueblo, Ohkay Owingeh- August 3, 2016



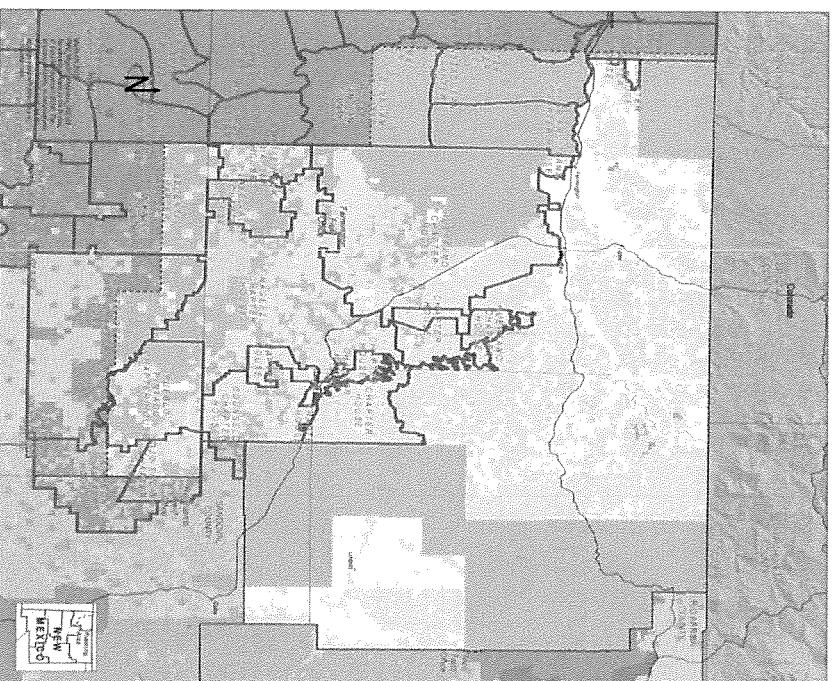
Chaco Culture National Historical Park

- Concerns
 - Relationship
- Cultural Landscapes
 - Signed a Cooperating Agency MOU on August 26, 2014
 - Has a representative on the ID Team
 - Will be assisting with modeling for impacts to dark skies
- Visual Resources
- Dark Skies
- Noise
- Vibrations
- Inholdings
 - Met with BLM staff at Chaco Culture National Historical Park February 3-5, 2015
 - Met with NPS Intermountain Region Superintendent for briefings, August 2, 2016



Local Communities Concerns

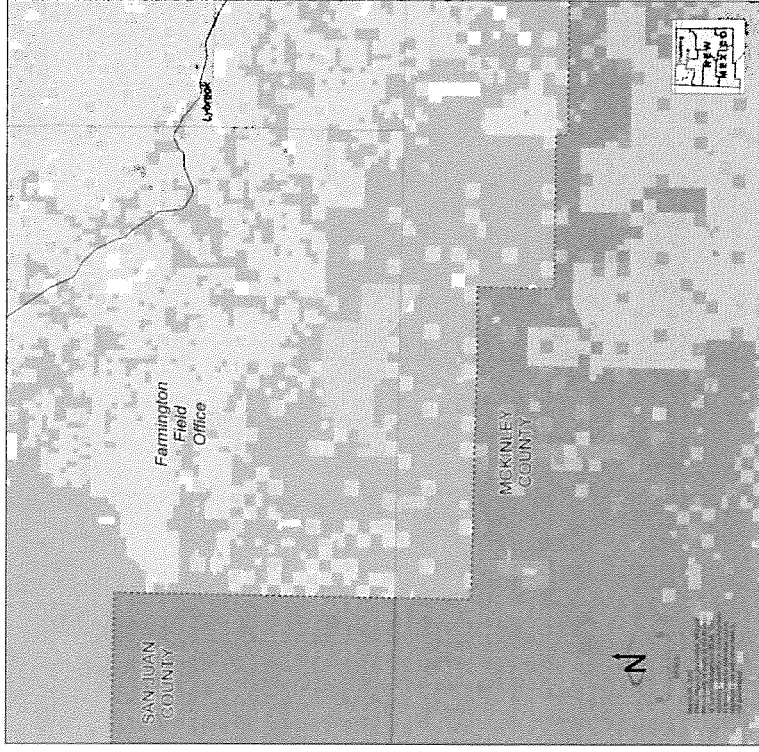
- Environmental Justice
- Quality of Life
- Public Health and Safety
- Road and Traffic Conditions
- Protection of Cultural Sites and Practices
- Air and Water Quality



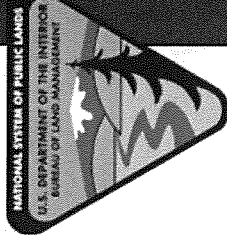
Land Management Pattern

- BLM manages approximately 19% of lands within a 10 mile radius of Chaco Culture National Historical Park
- BIA manages approximately 79% of lands within a 10 mile radius of Chaco Culture National Historical Park

Land Management	Acres	Percentage
BIA	313,000	79%
BLM	77,000	19%
State	41,000	1%
Private	3,000	<1%
Total	434,000	100%



Source: BLM GIS 2014
 Faded surface administration colors are inside the Farmington field office but outside the planning area. The planning area is the RPO area outside the planning area.



Public Scoping - Comments

- Scoping ended in February of 2017
- The agencies made the Scoping Report available to the public in May of 2017.
- This report is still available on-line



Next Steps

- The agencies are finalizing draft alternatives
- This will be available to the public this fall
- We anticipate the draft EIS to be available to the public in Spring of 2018

