

ALTA VISTA REGIONAL HOSPITAL

HELEN BALLANTYNE, CEO

HELEN.BALLANTYNE@ALTAVISTARH.ORG

ED HENRY, CHIEF PUBLIC POLICY OFFICER

ED.HENRY@DAVAHEALTH.COM



AGENDA

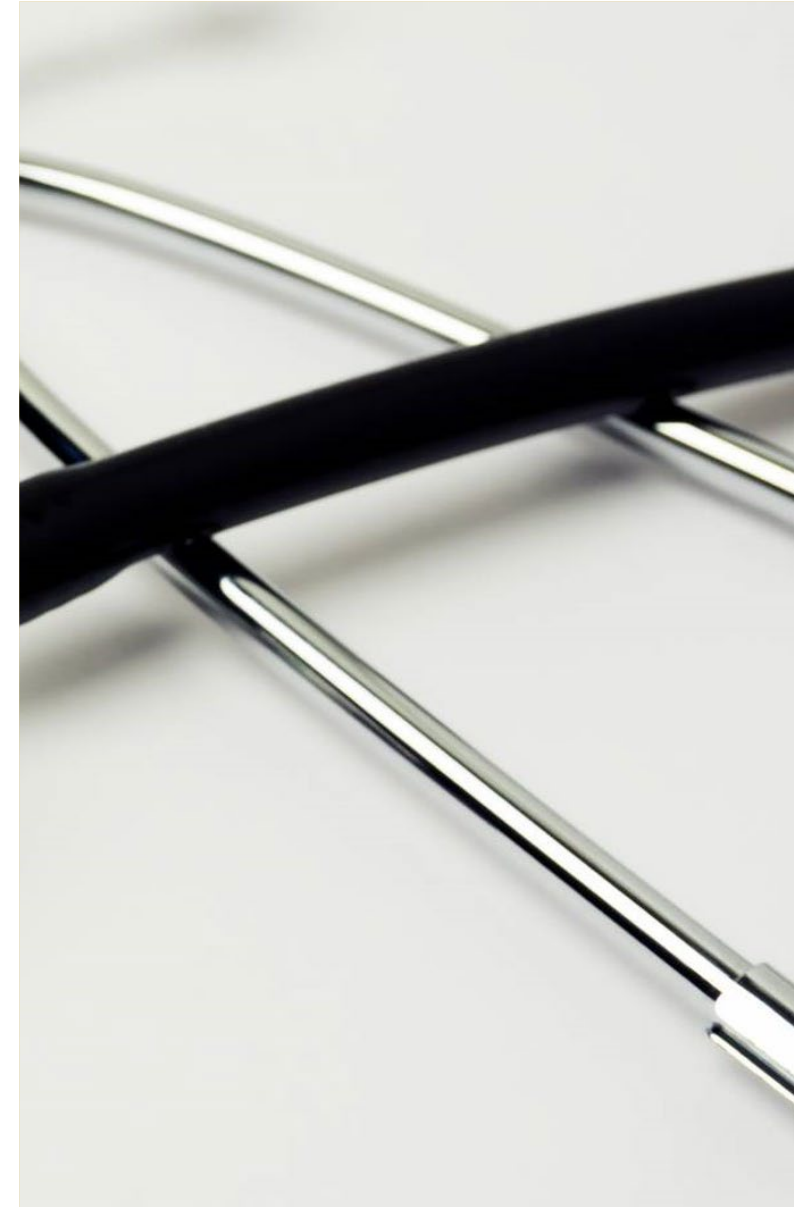
History of Hospital

Current Services

Service Expansion Initiatives

Challenges

Legislative Support



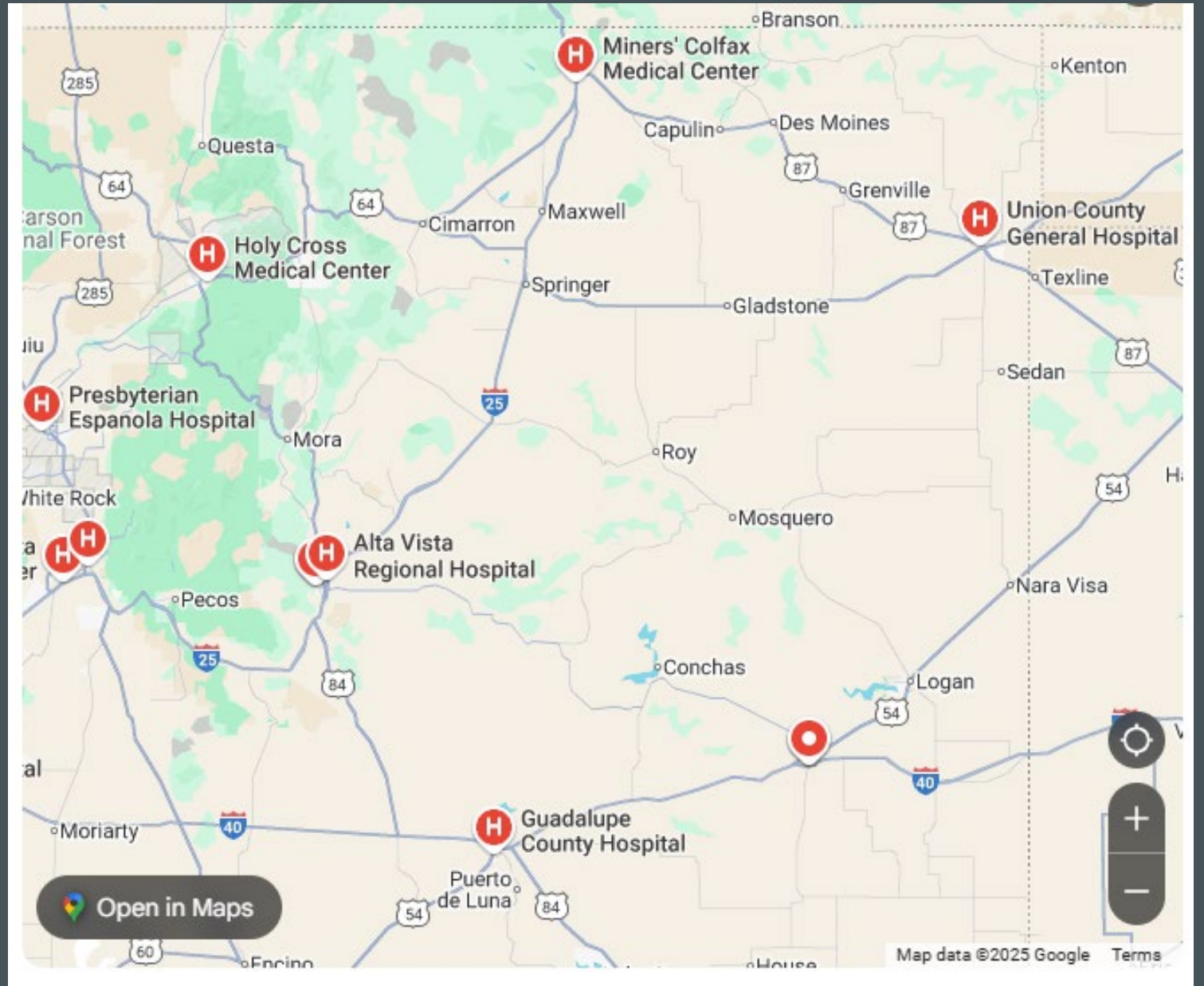
SERVICES OFFERED



Emergency Department	Dexa Scan (Bone Density)
Inpatient Services	Medical Imaging
Intensive Care	Laboratory Services
Swing Beds	Cardiopulmonary Services
Orthopedic Surgery	Cardiology Clinic
General Surgery	Physical Therapy
Interventional Pain Management	Sleep Center
3D Mammography	Pediatrics
Family Practice	Case Management

AVRH IS THE HUB

SAN MIGUEL COUNTY
MORA COUNTY
HARDING COUNTY
GUADALUPE COUNTY



AVRH SERVES A POPULATION OF APPROX: 35,000
SAN MIGUE COUNTY, MORA COUNTY,
HARDING COUNTY, GUADALUPE COUNTY



INITIATIVES

Expanded Surgical Services

Womens Health Clinic & Surgical Services

Umbrella Behavioral Health Center

Improved access to Transportation

Enhanced Primary Care Access





INCREASED SURGICAL SERVICES

- Two new Surgeons onboarding in August
- New Orthopedic Surgeon and New General Surgeon
- Improving access to timely treatment, earlier interventions, better outcomes, and reduced complications
- Providing Health Equity for underserved populations, reducing health disparities to marginalized communities
- Partnering with our local primary care providers to meet their patients surgical needs – keeping our patients local
- Partnering with our Local University to provide Sports Medicine to the athletes

WOMEN'S HEALTH SURVEY - SAN MIGUEL & MORA COUNTIES



Research by Fellows Ariel Cordero and Arielle Hawney

WOMEN'S HEALTH

SAN MIGUEL COUNTY

Women of Childbearing age 15-49
5322

Women Greater than 50yrs
6252



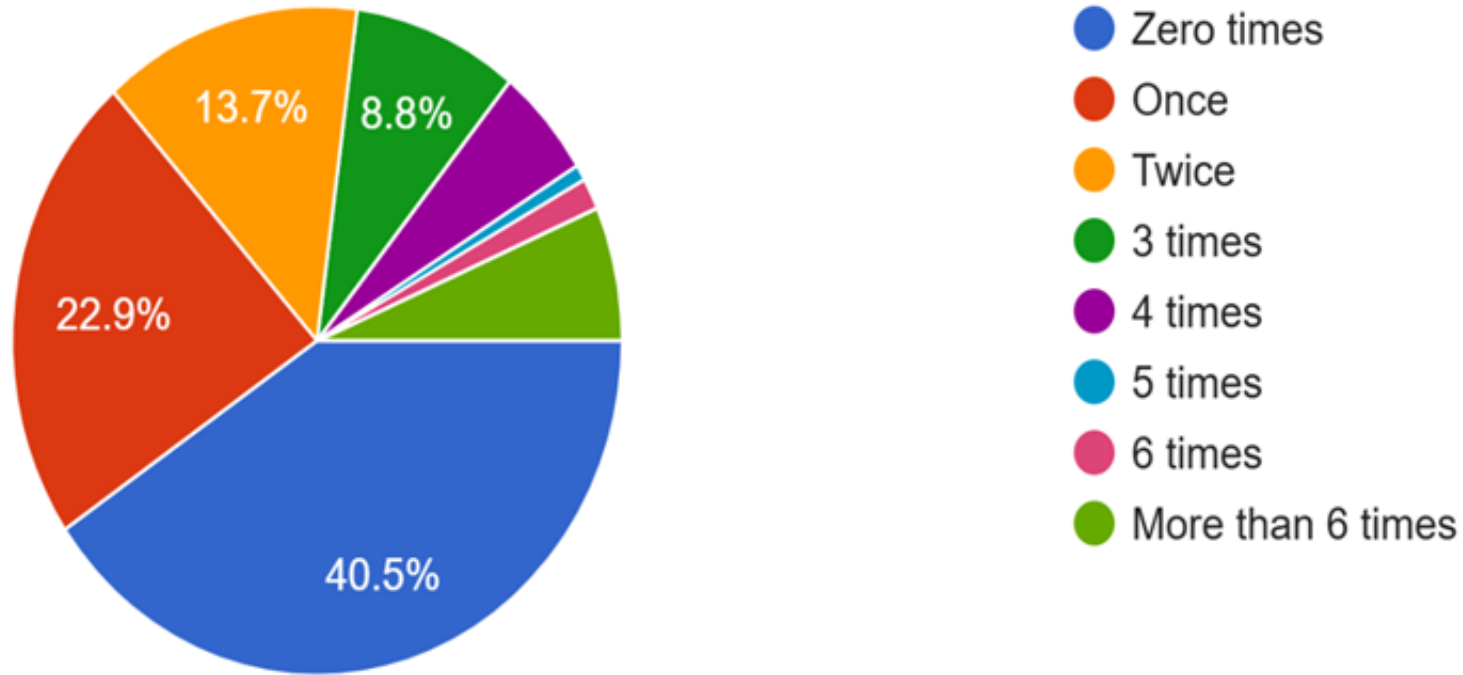
WOMENS CARE IS NEEDED

- × There are over 10,000 women over age 15-50
- × Women's health specialists are needed
- × Current lack of services creates travel-based barriers/hardships
- × More than 6000 respondents needed a women's health specialist in the last year.

13,000+ women need women's health services

★ ABOUT 60% OF RESPONDENTS HAD TO TRAVEL FROM 1-6 TIMES IN THE LAST YEAR FOR WOMEN'S HEALTH CARE

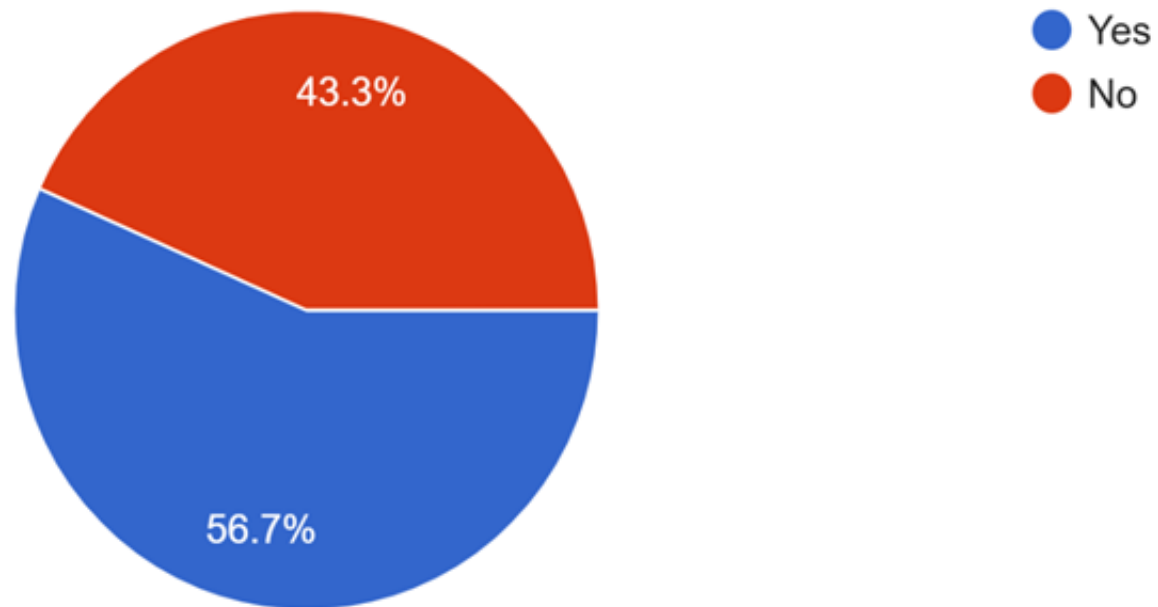
262 responses



★ MORE THAN ½ WOMEN ACROSS AGE GROUPS REPORTED NEEDING A WOMEN'S HEALTH SPECIALIST

Did you need a women's health specialist in the past year?

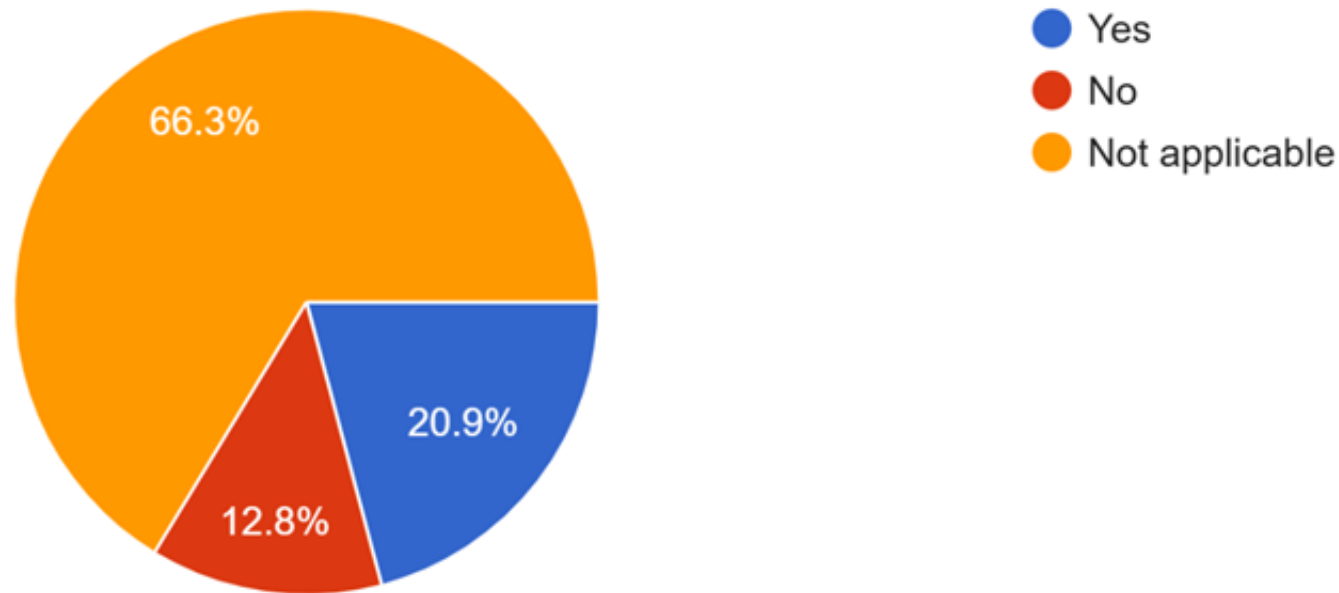
263 responses



★ MORE THAN 1/3 OF RESPONDENTS WHO NEEDED CONTRACEPTION COULD NOT GET IT LOCALLY

If you have need for contraceptive care, have you been able to get it locally (in San Miguel and Mora Counties)?

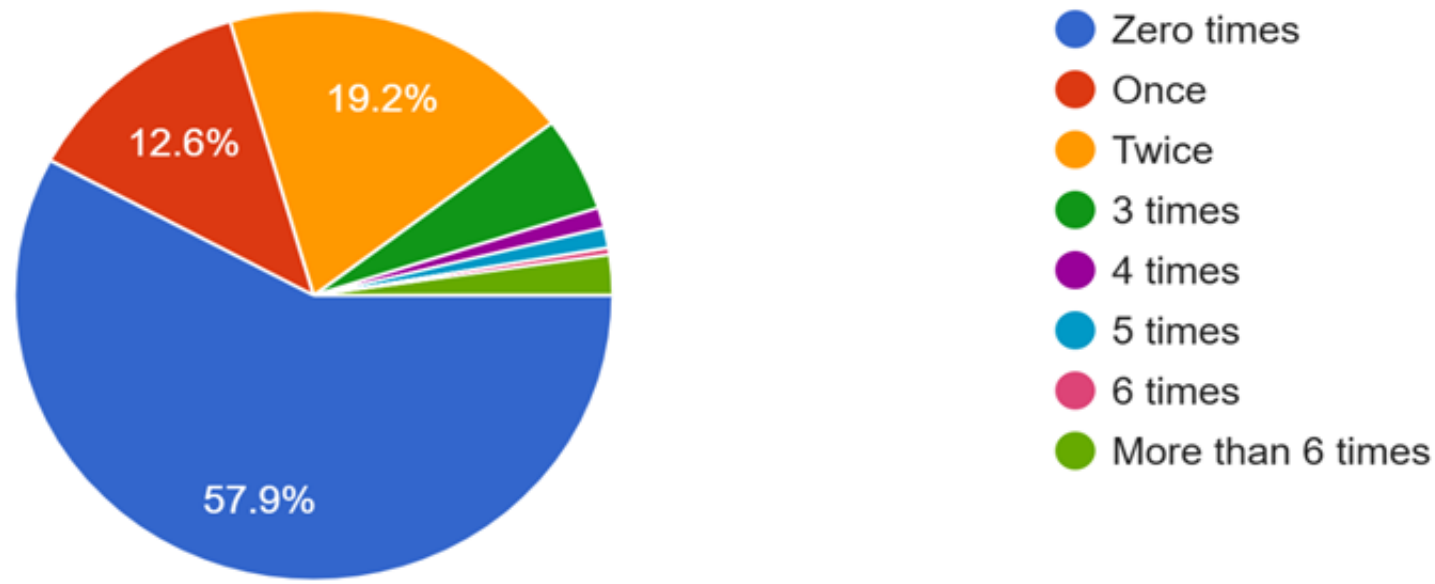
187 responses



★ ABOUT 40% REPORTED REDUCED UPTAKE OF CARE DUE TO DISTANCE AND INCONVENIENCE

How many times in the past year did you need women's health care but you did not go because of distance or inconvenience?

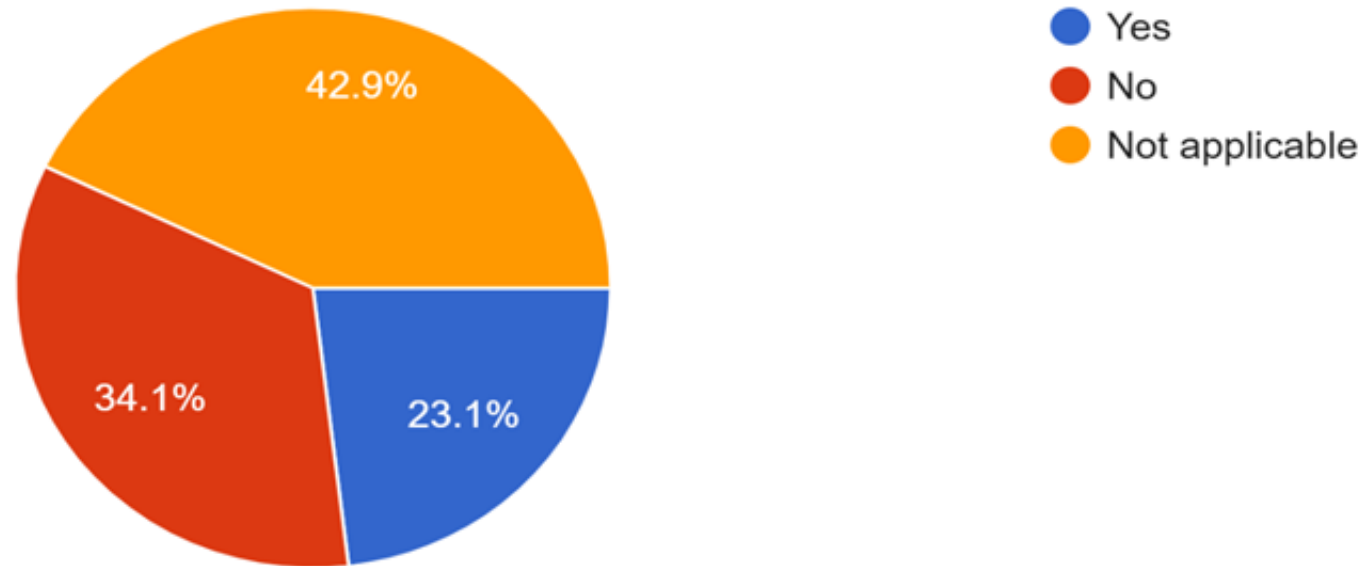
261 responses



★ **60% OF PERI OR POSTMENOPAUSAL WOMEN COULD NOT ACCESS NEEDED CARE LOCALLY**

If you are pre-menopausal, menopausal or post-menopausal, are you able to access the care you need locally (in San Miguel and Mora Counties)?

182 responses

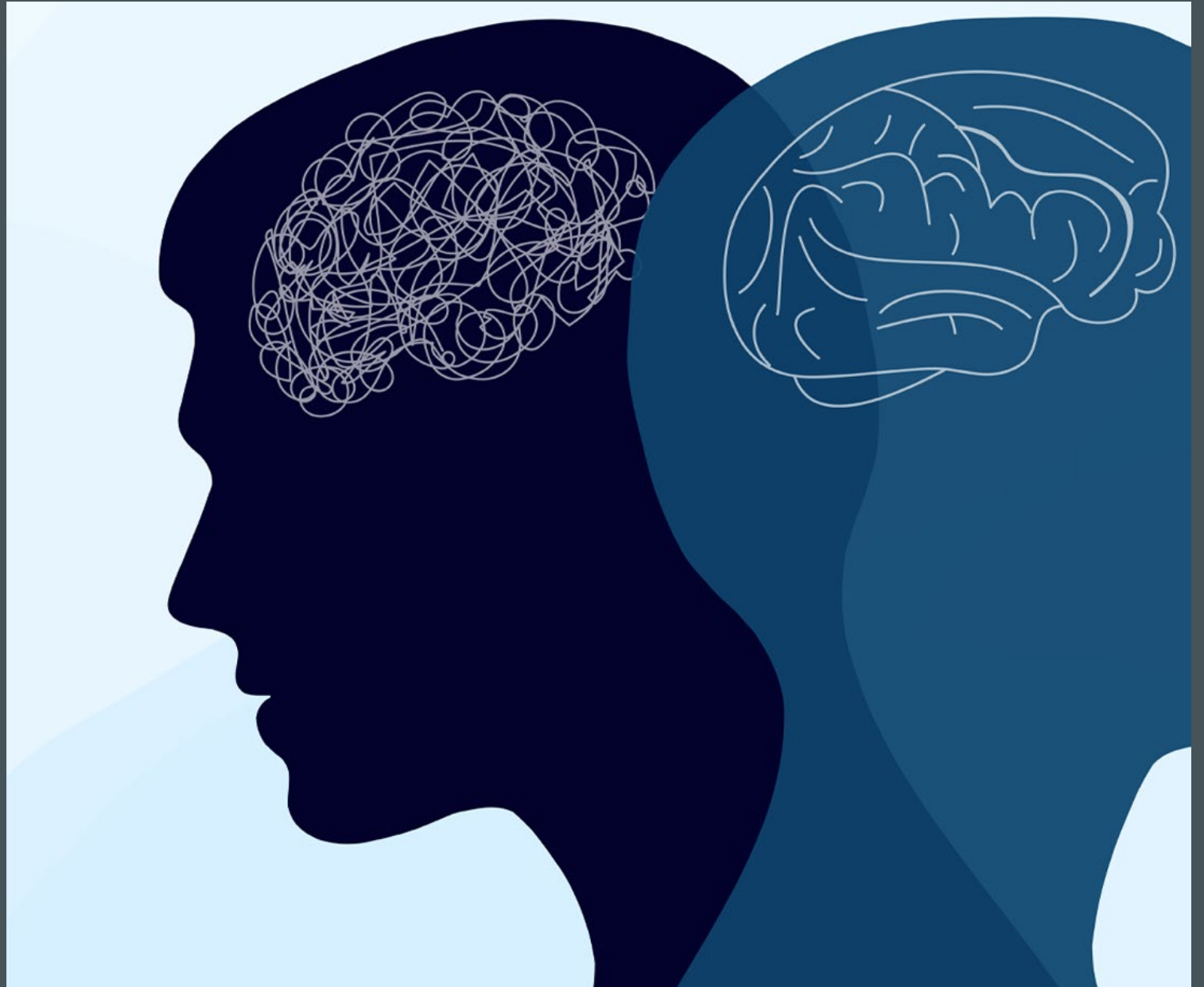




WOMENS HEALTH CLINIC & SURGICAL SERVICES

- Sept 15, 2025 – New Full Time Women's Health Nurse Practitioner
- Desire Partnership with University of New Mexico Hospital
 - Residency Program
 - Telehealth
 - Surgical Support
- Rural Health Care Delivery Fund
 - \$20million available for FY2026-2028 Funding Cycle

BEHAVIORAL HEALTH

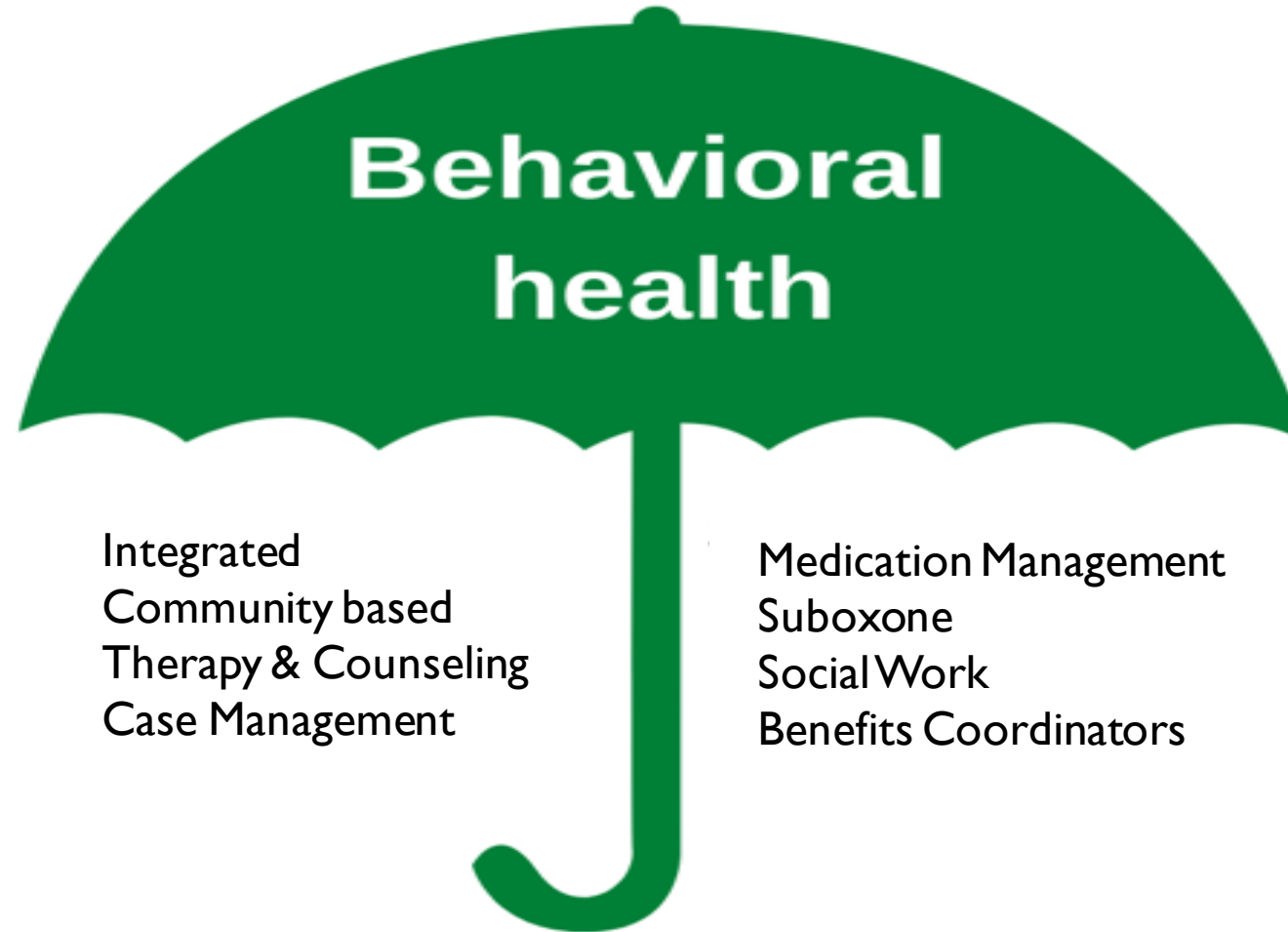


HOSPITAL FACTS

- Number of Patients per Week with a Mental Health Chief Complaint high
 - 5.4/week 2% of all patients 145 between Jan 1 – June 30
 - 2024 17.07% of all transfers were for Behavioral Health
 - 2025 so far we have transferred 19.88%
- National average of ED visits resulting in Behavioral Health Transfers is 1-2%
- As a Critical Access Hospital we can't keep inpatients for greater than 4 days

REQUEST DIRECT ADMISSION TO NMBHI

PROPOSED UMBRELLA PROGRAM FOR BEHAVIORAL HEALTH OUTPATIENT PROGRAM



PATIENT TRANSPORT

- Partnering with Air Transport Company to make Alta Vista a Helicopter base for the region – currently in negotiations
- Help facilitate rapid transport
- Flight Crew will supplement our critical staffing & staff ground transport during inclement weather
- Flight Crew will provide critical care training



CHALLENGES

1. 22% Poverty Rate
2. 60 miles to Santa Fe from Las Vegas – Farther from the other surrounding counties
3. Aging Population 24.43% >65
4. Provider Shortages
5. Limited insurance coverage
6. Average Household income \$35,151

BARRIERS TO CARE

- Transportation Difficulties
- Great geographic distances to access appropriate level of healthcare
- Poverty and Unemployment
- Provider & Specialty Care Shortages
- Limited Insurance Coverage
- High density of Behavioral Health Patients
 - Chronic/complex medical conditions
 - Unhoused
 - Polysubstance Abuse
 - Uninsured
 - Undertreated

MEDICAID MCO'S

- Our >120 day unpaid Turquoise Claims is \$3,350,162.33
 - Primarily due to Credentialing of our providers with the Medicaid enrollment changes
 - Turquoise Care changed to the YES New Mexico Portal which caused providers being dropped resulting in denials
 - Providers NPI numbers went from being in-network to non-network



LEGISLATIVE SUPPORT

- DIRECT ADMITS TO NMBHI
- MORE ROBUST LOAN REPAYMENT PROGRAMS FOR RURAL NEW MEXICO HEALTH CARE WORKERS
- RURAL RESIDENCY PROGRAM SUPPORT
- BEHAVIORAL HEALTH PROGRAM FUNDING FOR RURAL CRITICAL ACCESS HOSPITALS



THANK YOU