



TRANSITIONING INTO AN ACCREDITED SCHOOL OF PUBLIC HEALTH

Presented by Dean Tracie Collins, MD, MPH, MHCDS
August 30, 2023





Office of The Dean

Tracie C. Collins MD, MPH, MHCDS
Dean and Professor

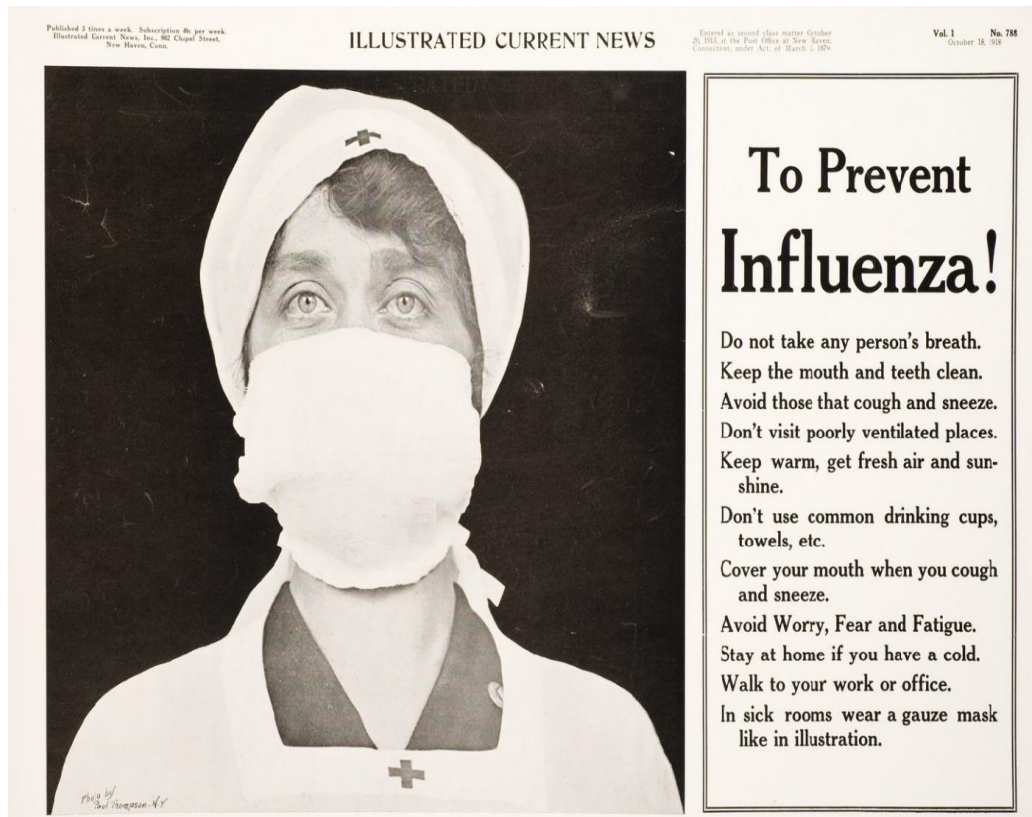
College of Population Health
Located in the Family Practice Clinic
2400 Tucker Ave NE, Albuquerque, NM 87131

tccollins@salud.unm.edu

After nine months of service, I returned to
serve as dean. you through!

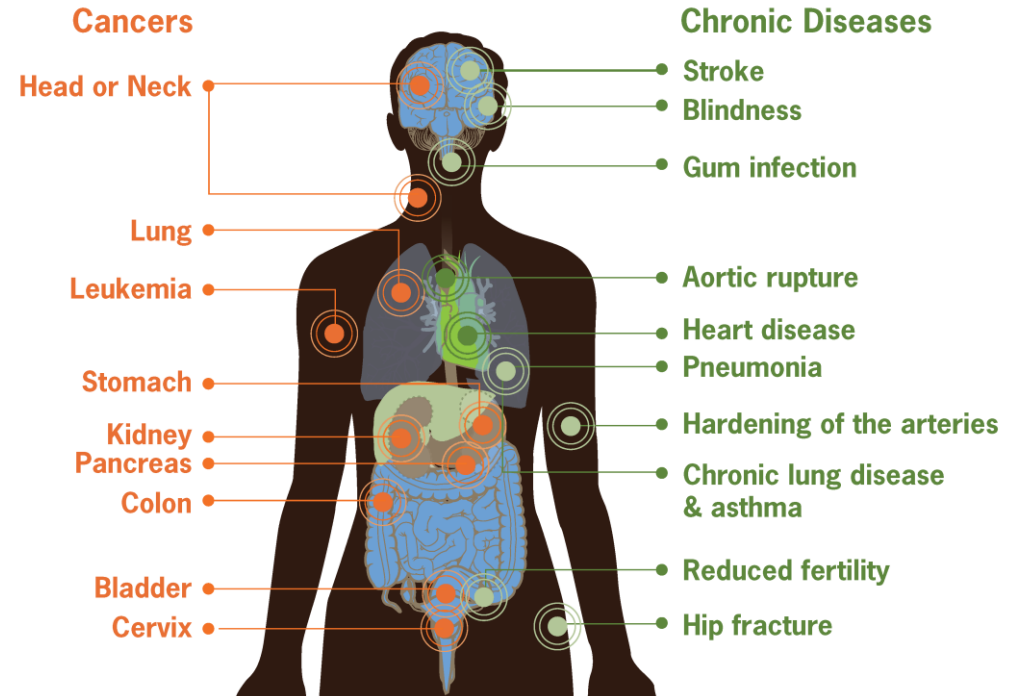


Public Health and Healthcare Delivery



Risks from Smoking

Smoking can damage every part of the body





\$10,000,000

Many thanks to our state leaders for \$10 million to spend over the next two years to grow the College of Population Health!!

Goal

Transform from

College of Population Health

To an accredited

School of Public Health



Our Vision

The College of Population Health will be a global leader committed to achieving health equity and thriving communities throughout New Mexico, the Southwest, and the globe.

Our Mission

Working collectively with communities and other key partners to educate our future public health leaders and conduct quality scholarship, we will improve the health and social well-being of all peoples in New Mexico and beyond.

Steps to Accomplish Accreditation

1. Have a date for graduating first PhD student(s)
2. Increase the number of faculty which also requires more staff



Six Deliverables to Impact Public Health in NM in Two Years

- ❖ **Deliverable #1: Increase the number of diverse students**
- ❖ **Deliverable #2: Increase the number of diverse faculty**
- ❖ **Deliverable #3: Increase non-state research dollars**
- ❖ **Deliverable #4: Create a Public Health Education Network Statewide**
- ❖ **Deliverable #5: Expand Statewide Community Health Assessments**
- ❖ **Deliverable #6: Lead two major public health intervention initiatives**

Six Deliverables to Impact Public Health in NM in Two Years

- ❖ **Deliverable #1:** Increase the number of students
- ❖ Deliverable #2: Increase the number of faculty
- ❖ Deliverable #3: Increase non-state research dollars
- ❖ Deliverable #4: Create a Public Health Education Network Statewide
- ❖ Deliverable #5: Expand Statewide Community Health Assessments
- ❖ Deliverable #6: Lead two major public health intervention initiatives

Student Program Enhancements

- Undergraduate level

- ❖ Maternal Child Health (MCH) minor
- ❖ Maternal Child Health Professional Certificate
- ❖ Online Program
- ❖ Population Health Minor

- Graduate level

- ❖ Maternal Child Health (MCH) minor and certificate
- ❖ Public Health Minor

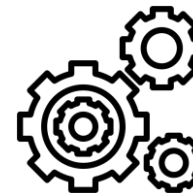
- Collaborations with:

- ❖ Anderson School of Management
- ❖ Psychology and Public Administration

- Cooperative Doctoral Degree:



BE BOLD. Shape the Future.*
College of Health, Education
and Social Transformation



Council on Education for Public Health (CEPH)



- Accredits bachelor's, master's and doctoral programs
- Recognized by the US Department of Education to accredit **schools** and **programs** of public health
- Student benefits:
 - Access to internships and fellowships and other resources only available to accredited schools/programs
 - Quality educational experience

Possibilities for UNM School of Public Health

Pillars



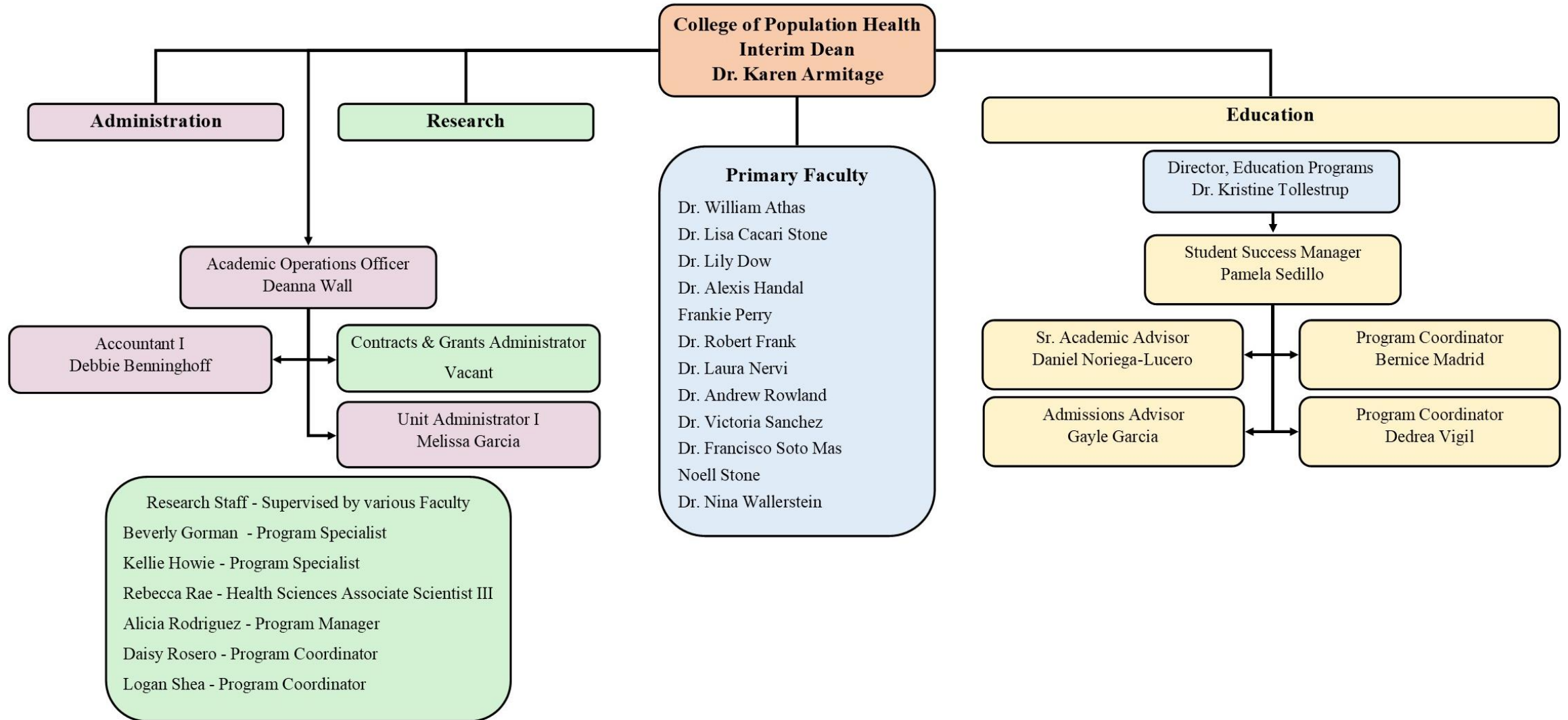
Concentrations



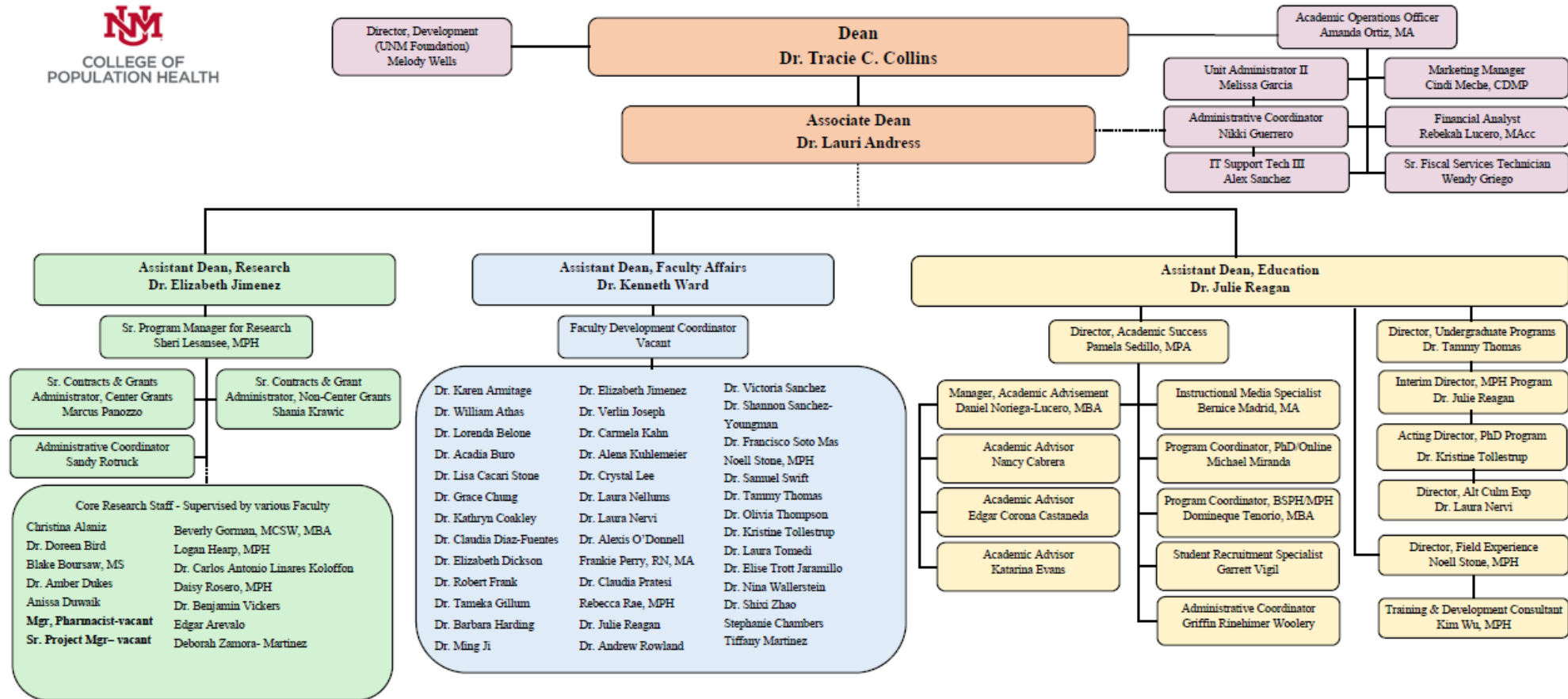
Six Deliverables to Impact Public Health in NM in Two Years

- ❖ Deliverable #1: Increase the number of students
- ❖ **Deliverable #2: Increase the number of faculty**
- ❖ Deliverable #3: Increase non-state research dollars
- ❖ Deliverable #4: Create a Public Health Education Network Statewide
- ❖ Deliverable #5: Expand Statewide Community Health Assessments
- ❖ Deliverable #6: Lead two major public health intervention initiatives

COPH Organizational Chart Prior to July 2019



Current Organizational Chart



A Few Pics of New Faculty



**Lorenda Belone, PhD,
MPH**

Professor



**Verlin Joseph, PhD,
MPH**

Assistant Professor



Lexi O'Donnell, PhD

Assistant Professor



Carmella Kahn, PhD

Assistant Professor



Alena Kuhlemeier, PhD

Assistant Professor

New COPH Deans



Laurie Address, PhD JD, MPH
Associate Dean
landress@salud.unm.edu
713-553-8192



Julie Reagan, PhD, JD, MPH
Assistant Dean of Education
jkreagan@salud.unm.edu
505-272-6375



Elizabeth Yakes Jimenez, PhD, RDN
Assistant Dean of Research
eyjimenez@salud.unm.edu
505-272-5640



Kenneth D. Ward, PhD
Assistant Dean of Faculty Affairs

Starting 08/28/2023

We need your help: Partnering for a Healthier NM

We welcome any questions and feedback from the Legislature and the Executive:

- **Public Health Expansion** needs I&G funding to support the new faculty hired and a SPH building
 - **Recurring dollars (\$5.4 million) are needed to support recruitment of 21 faculty and 22 administrators in one year**
 - **A building dedicated to the college given our substantial growth in both faculty and staff as well as the addition of social work (NMSU)**
- **Social Worker Program (UNM with NMSU)**

Six Deliverables to Impact Public Health in NM in Two Years

- ❖ Deliverable #1: Increase the number of students
- ❖ Deliverable #2: Increase the number of faculty
- ❖ **Deliverable #3: Increase non-state research dollars**
- ❖ Deliverable #4: Create a Public Health Education Network Statewide
- ❖ Deliverable #5: Expand Statewide Community Health Assessments
- ❖ Deliverable #6: Lead two major public health intervention initiatives

COPH Faculty: Methodological Expertise



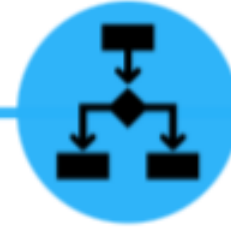
Community-based participatory research



Economic analysis



Implementation and dissemination research



Intervention research



Policy scans or analysis
Legal epidemiology



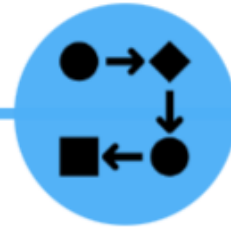
Program evaluation



Scoping or systematic reviews



Qualitative methods
Interviews
Focus groups



Quality improvement



Quantitative methods
Surveys
Biostatistics/ data analysis

Grant Awards – July and August 2023 (\$1,014,141)

- PI Dr. Belone, NIH (\$662,026 Year 4)
- PI Rae, Conrad N. Hilton Foundation (\$50,000)
- PI Dr. Trott Jaramillo, NIH (\$621,345)
- PI Dr. Yakes Jimenez, Administration on Aging (\$95,000)
- PI Dr. Dickson: UC-Davis - Bettie Irene Moore Fellowship (\$500,000)

Grant/Contract Submissions – July and August 2023

- PI Dr. Belone: NIH R01-Continuation (\$613,270 - year 5 continuation)
- PI Dr. Cacari Stone: NIH P50 - TREE Center 2.0 (\$3,812,500)
- PI Dr. Soto Mas: Bernalillo County (\$30,000)
- PI Dr. Coakley: NM Farmer's Association (\$20,000)

Six Deliverables to Impact Public Health in NM in Two Years

- ❖ Deliverable #1: Increase the number of students
- ❖ Deliverable #2: Increase the number of faculty
- ❖ Deliverable #3: Increase non-state research dollars
- ❖ **Deliverable #4: Create a Public Health Education Network Statewide**
- ❖ Deliverable #5: Expand Statewide Community Health Assessments
- ❖ Deliverable #6: Lead two major public health intervention initiatives

Public Health Education Network

- Created a database of public health programs throughout the state and contacts (four-year, two-year, and Tribal colleges). Setting up calls with these programs to assess opportunities for networking)
- Collaborating with **Health Sciences Interprofessional Education (IPE) Program** to broaden the IPE Honors program to expand across the state.
- Planning a **Public Health Certificate** that is available to individuals statewide.
- Collaborating with 2-year institutions to create degree/career pathways for students from their local institution to UNM and then to their desired careers.



Six Deliverables to Impact Public Health in NM in Two Years

- ❖ Deliverable #1: Increase the number of students
- ❖ Deliverable #2: Increase the number of faculty
- ❖ Deliverable #3: Increase non-state research dollars
- ❖ Deliverable #4: Create a Public Health Education Network Statewide
- ❖ **Deliverable #5: Expand Statewide Community Health Assessments**
- ❖ Deliverable #6: Lead two major public health intervention initiatives

Community Health Assessments

Working with DOH to align efforts statewide
(Counties - NM Alliance of Health Councils, hospitals, FQHCs)

- Understanding timelines for each entity
- Determining gaps in CHAs
- Improving the quality of CHAs
- Aligning outcomes
- Creating a statewide health improvement plan



Six Deliverables to Impact Public Health in NM in Two Years

- ❖ Deliverable #1: Increase the number of students
- ❖ Deliverable #2: Increase the number of faculty
- ❖ Deliverable #3: Increase non-state research dollars
- ❖ Deliverable #4: Create a Public Health Education Network Statewide
- ❖ Deliverable #5: Expand Statewide Community Health Assessments
- ❖ **Deliverable #6: Lead two major public health intervention initiatives**

Public Health Interventions



Use technology to leverage scarce resources



Apply case-based learning to master complexity



Share best practices to reduce disparities



Evaluate and monitor outcomes

UNM Social Work Program

- ❑ Great demand – only 200 of 1000 state positions currently filled
- ❑ State funding - \$10.5 million in endowment funds
 - ❑ Funds for operations
- ❑ MOU with NMSU – students will enroll at NMSU but be housed in Albuquerque
- ❑ Standard two-year master of social work (MSW) program – 60 credits/typically two years/ students with a bachelor's degree in another discipline will apply to this program
- ❑ Advanced standing MSW program – for students who have earned a Bachelor of Social Work from an accredited program with a minimum 3.00 GPA/complete in one year as a full-time student or two years as part-time students

UNM Social Work Program (cont'd)

- Fall'23, hire a director to be housed at UNM
 - To lead the program, work on accreditation for UNM to have its own program
- Courses to be taught by qualified faculty which may include full-time faculty from NMSU, part-time faculty from NMSU, on-site NMSU/UNM affiliate faculty
- Course delivery format will be determined by the Dean or Associate Dean, College of Health Education and Social Transformation, NMSU
- Students to begin Fall'24

UNM Social Work Program (cont'd)

- Social Security Act, Title IV
 - Students can receive support
 - \$12,000 per year
 - Commit to child welfare social work
 - Practicum at CYFD
 - Commit to work at CYFD for two years

We need your help: Partnering for a Healthier NM

We welcome any questions and feedback from the Legislature and the Executive:

- **Public Health Expansion** needs I&G funding to support the new faculty hired and a SPH building
 - **Recurring dollars (\$5.4 million) are needed to support recruitment of 21 faculty and 22 administrators in one year**
 - **A building dedicated to the college given our substantial growth in both faculty and staff as well as the addition of social work (NMSU)**
- **Social Worker Program (UNM with NMSU)**



THANK
YOU!

Questions?
