



Children, Youth & Families Department

STATE OF NEW MEXICO

LHHS | August 28, 2023

Presented by Teresa Casados
CYFD Acting Cabinet Secretary

Plans & Initiatives

- ▶ Social Security Benefits
- ▶ Office Stays
- ▶ Receiving Centers
- ▶ Family Resource Centers
- ▶ Family Services Division



Questions?

Program Updates

- ▶ CYFD Structural Transformation
 - ▶ Protective Services Division
 - ▶ Administrative Services Division
 - ▶ Family Services Division
- ▶ Kevin S Initiatives

Pillars of CYFD

Protective
Services

Family
Services

Juvenile
Justice
Services

OFFICE OF TRIBAL AFFAIRS

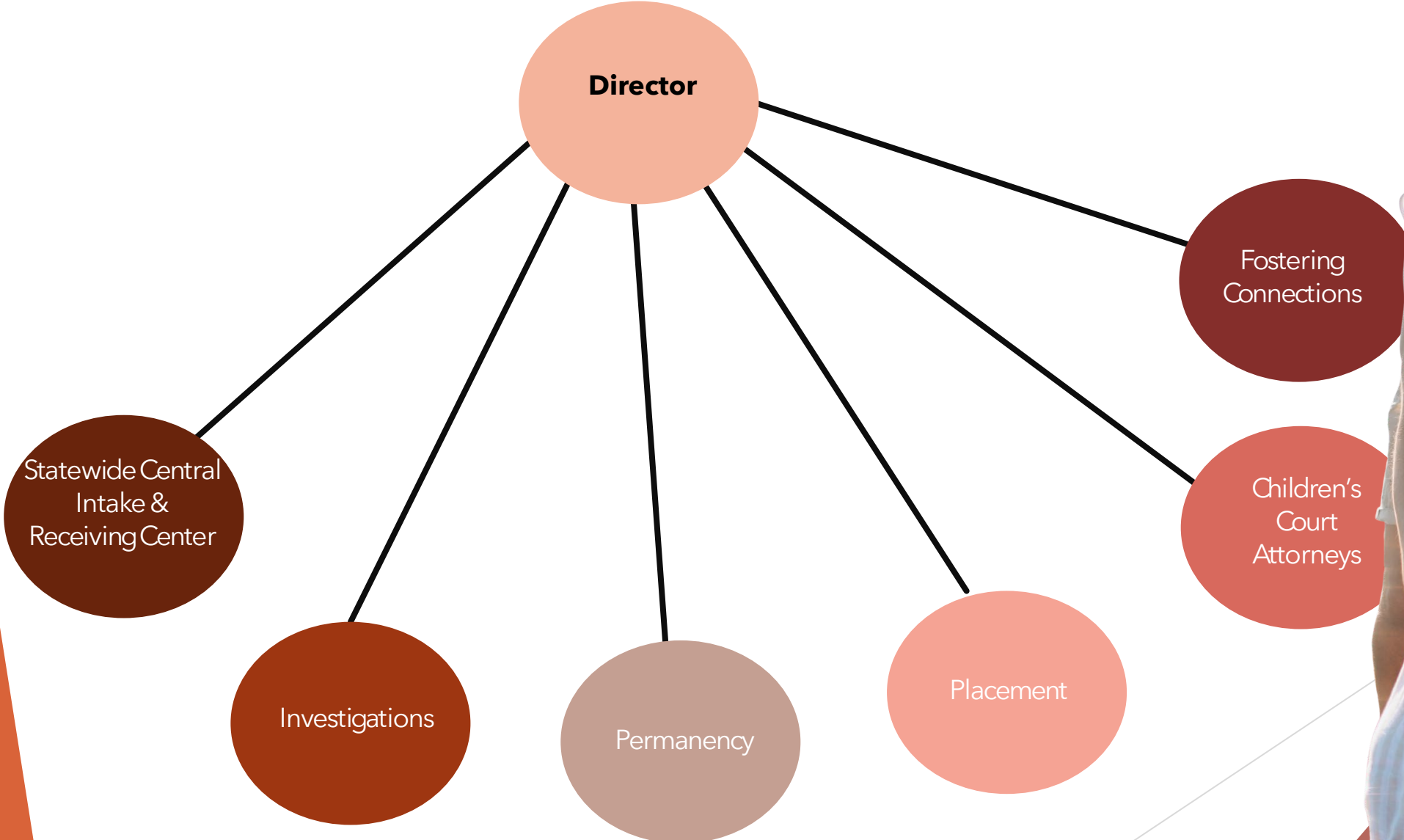
OFFICE OF PERFORMANCE AND ACCOUNTABILITY

OFFICE OF CHILDREN'S RIGHTS

BEHAVIORAL HEALTH

PROGRAM SUPPORT (including ASD)

Protective Services



Foster Family Resource Hub



Welcome to our Foster Parent Resource Hub, your one-stop destination for all your foster care needs.

Our foster family resource platform facilitates streamlined communications and support from CYFD, ensuring efficient collaboration and timely assistance for foster parents. This partnership empowers families to create a nurturing environment for the children in their care, benefiting from clear and secure channels of communication.

Foster Parent Login Below:

* Email

* Password

Log In

[Forgot Password?](#)

Do you need to create an account?

Join our resource platform and become a vital support system for foster children in need, making a lasting difference in their lives. [Click here to create a new account.](#)



Foster Family Resource Hub

The screenshot shows the Foster Family Resource Hub interface. At the top left is the logo for the Children, Youth & Families Department, State of New Mexico. The top right navigation bar includes links for Reimbursements, FAQ, Training Prep, Profile, and Log Out. A personalized greeting "Good Morning, Sarah" is displayed, followed by a red status indicator: "Currently Unavailable for Placement". Below this are four main navigation cards: Profile Information (person icon), Transactions (receipt icon), FAQs (speech bubble icon), and Training & Resources (lightbulb icon). The main content area is titled "Reimbursement Requests" and features a "Request Reimbursement" button and a "Filter by status..." dropdown. A table lists two requests:

Description	Submitted On	Status	
Lunch at Little Anita's	4/28/2023	Requested	View
Coffee and breakfast	4/28/2023	Rejected	View

At the bottom right of the table, it indicates "1 - 2 of 2 items".

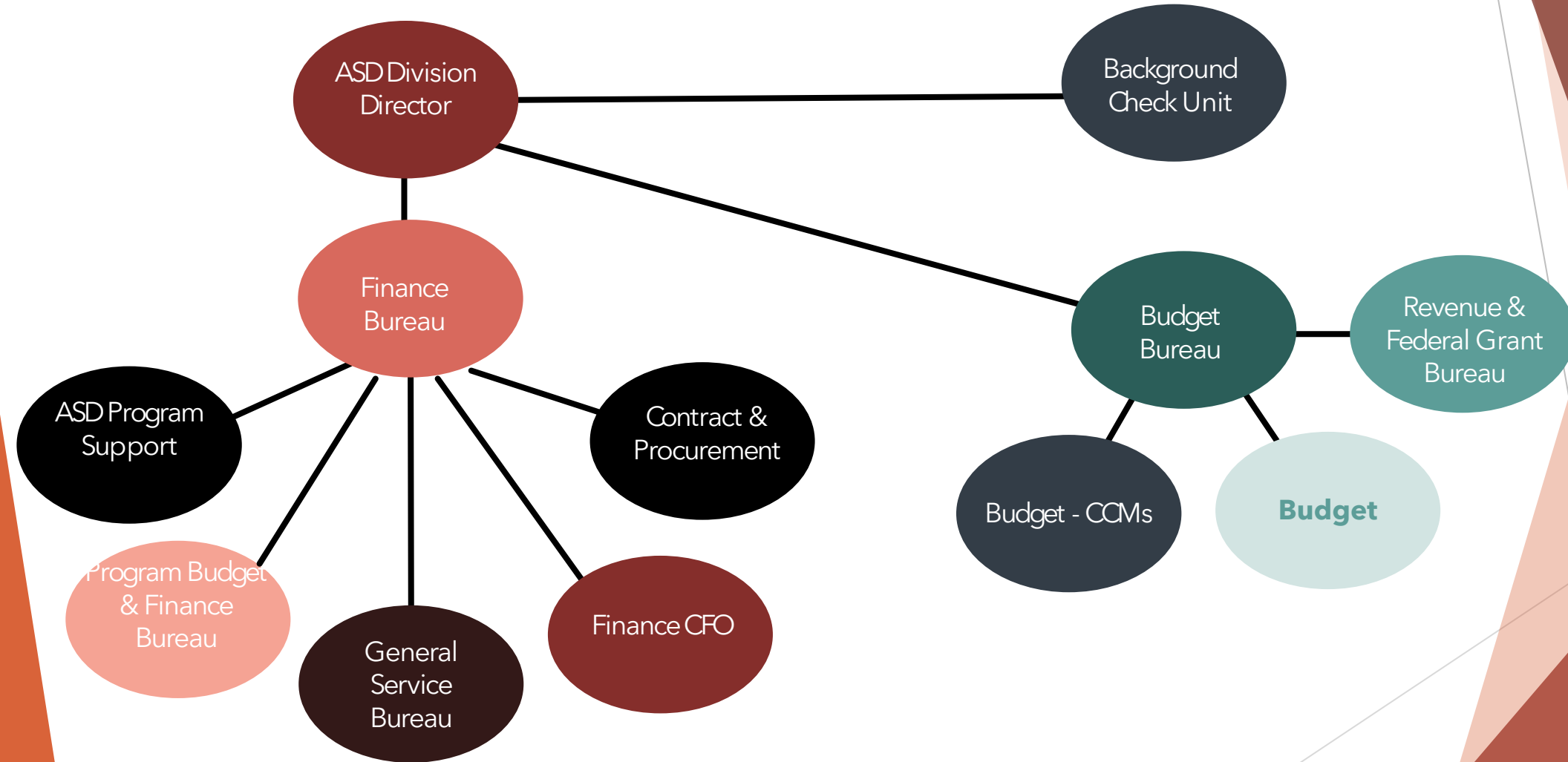
- One-stop destination for all foster care communications with CYFD
- Streamlines Communications and Support
- Ensures efficient collaboration and timely assistance
- Comprehensive, user-friendly digital platform including:
 - Family profiles
 - Transactions
 - FAQs
 - Chat functionality
 - Training & Resources
 - Expedites Reimbursement

Office of Tribal Affairs

- In partnership with New Mexico's Nations/Pueblos/Tribes (N/P/Ts) and CYFD Workforce Development Bureau, co-created Indian Child Welfare and Cultural Humility curriculum which is mandatory training for CYFD's workforce.
- Provide case consultation; training and coaching; facilitates monthly out-of-preferred placement team meeting to ensure Native children are placed in accordance with their Nation/Pueblo/Tribe's placement preferences or IFPA placement preferences.
- In partnership with the N/P/Ts and community partners, developing Native American Resource Parent Recruitment and Retention plan.
- In partnership with the N/P/Ts, working to increase cultural connectedness and support to Native children, youth, and families; as well as culturally responsive programming and opportunities to support engagement in tribal activities (at the discretion and request of the family and/or the N/P/T).



Administrative Services Overview



Agency Collaborations

- **Interagency Communications**
- **Collaborative Efforts**
 - Kevin S. Settlement
CYFD & HSD
 - Protective Services Rapid Hire Event
CYFD & DWS
 - Well-Child Check Ups
CYFD & DOH
 - Cara Family System of Support
CYFD, DOH, ECECD & HSD

Questions?