

CITY OF FARMINGTON: INVESTING IN OUR FUTURE



SEPTEMBER 2025

City of Farmington Metropolitan Statistical Area



Metropolitan Statistical Area (MSA) is a geographical region with 50,000 or more population.

New Mexico MSAs Populations
(As of July 1, 2023)

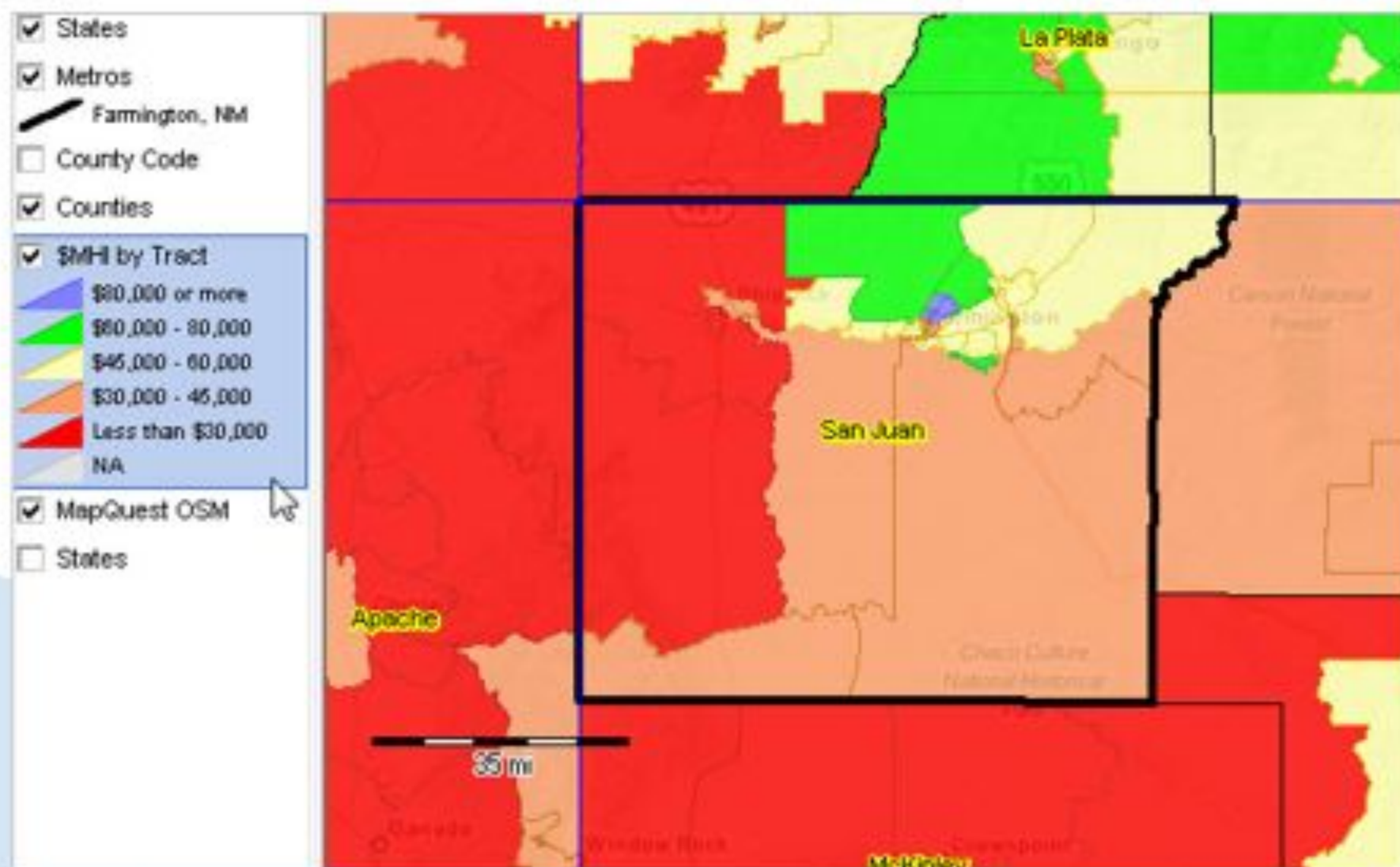
- Albuquerque 923,076
- Las Cruces 224,531
- Santa Fe 157,756
- **Farmington 119,471**

Source: <https://newmexico.hometownlocator.com>

City of Farmington Metropolitan Statistical Area



Median household income by census tract.



Source: <https://proximityone.com/metros>



City of Farmington Trade Area

- Farmington MSA houses 121,017 residents
- According to the US Economic Development Agency, through its Cluster Mapping Project, the Farmington Economic Trade Area (outlined in black) encompasses
 - ☑ San Juan County, NM
 - ☑ Colorado counties:
 - Archuleta
 - Dolores
 - Hinsdale
 - La Plata
 - Montezuma
 - San Juan
- The economic trade area population is approximately **220,195** people.
- Not included in the trade area, but because of Farmington's proximity and media market extension, the population should include portions of Apache County, AZ and San Juan County, UT (Four Corners) bringing the population to approximately **311,282** people.

Source: www.clustermapping.us



Michaels

amazon



MAVERIK



Burlington
DEALS. BRANDS. WOW!

Retail/Commercial Development

COMMUNITY TRANSFORMATION AND ECONOMIC DIVERSIFICATION (CTED) FUND

- UNANIMOUSLY PASSED BY THE CITY COUNCIL IN 2018, A 1/4% GENERAL PURPOSE GROSS RECEIPTS TAX INCREMENT WAS ADOPTED WITH BROAD DISCRETION FOR USES DETERMINED BY THE GOVERNING BODY AS DEEMED APPLICABLE TO SPUR “COMMUNITY TRANSFORMATION AND ECONOMIC DIVERSIFICATION”, INCLUDING BUT NOT LIMITED TO:

1. STRATEGIC PROPERTY ACQUISITION, BLIGHT REMEDIATION,
AND INCENTIVES FOR JOB CREATION

2. CAPITAL INVESTMENT IN CATALYTIC AND QUALITY OF LIFE PROJECTS

3. FUNDS MAY BE BONDED AT THE DISCRETION OF THE GOVERNING BODY

4. RENOVATIONS, EXPANSION, AND REPLACEMENT OF RELEVANT AGING INFRASTRUCTURE

5. STRATEGIC PLANS AND CONCEPTUAL STUDIES

\$4-5

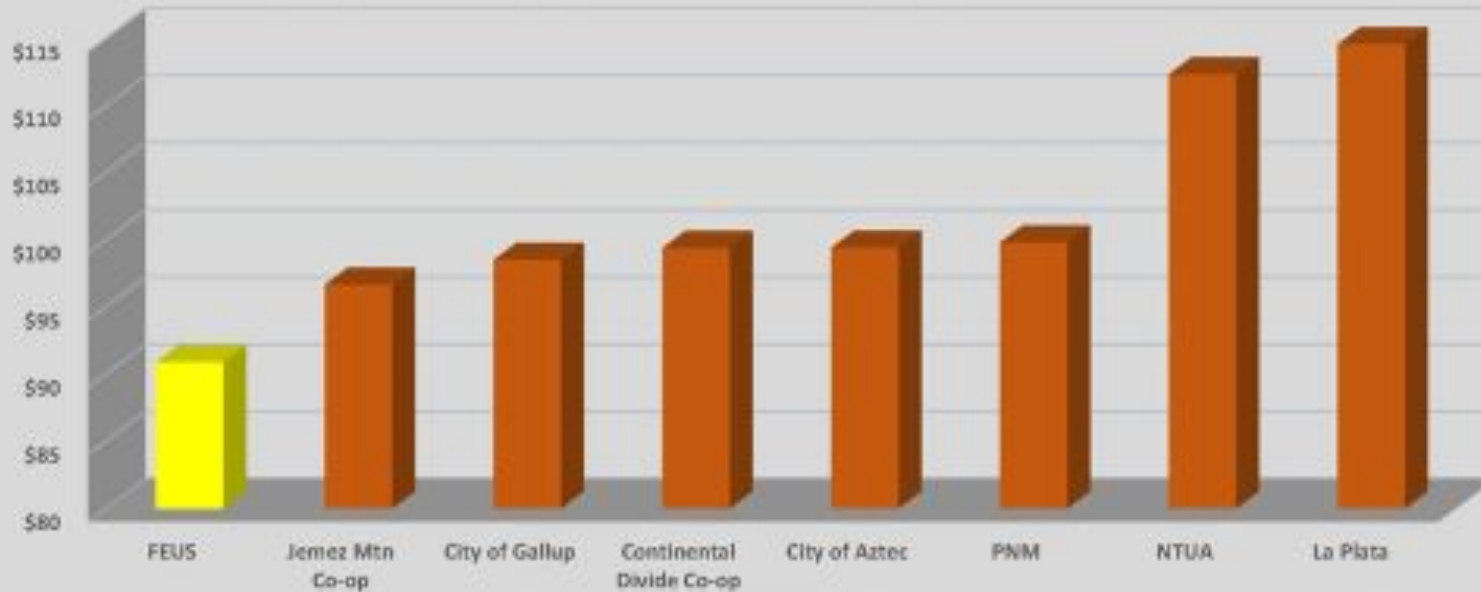
1/4 m

%

Electric Rate Comparison



Residential Customer
(650 kwh)



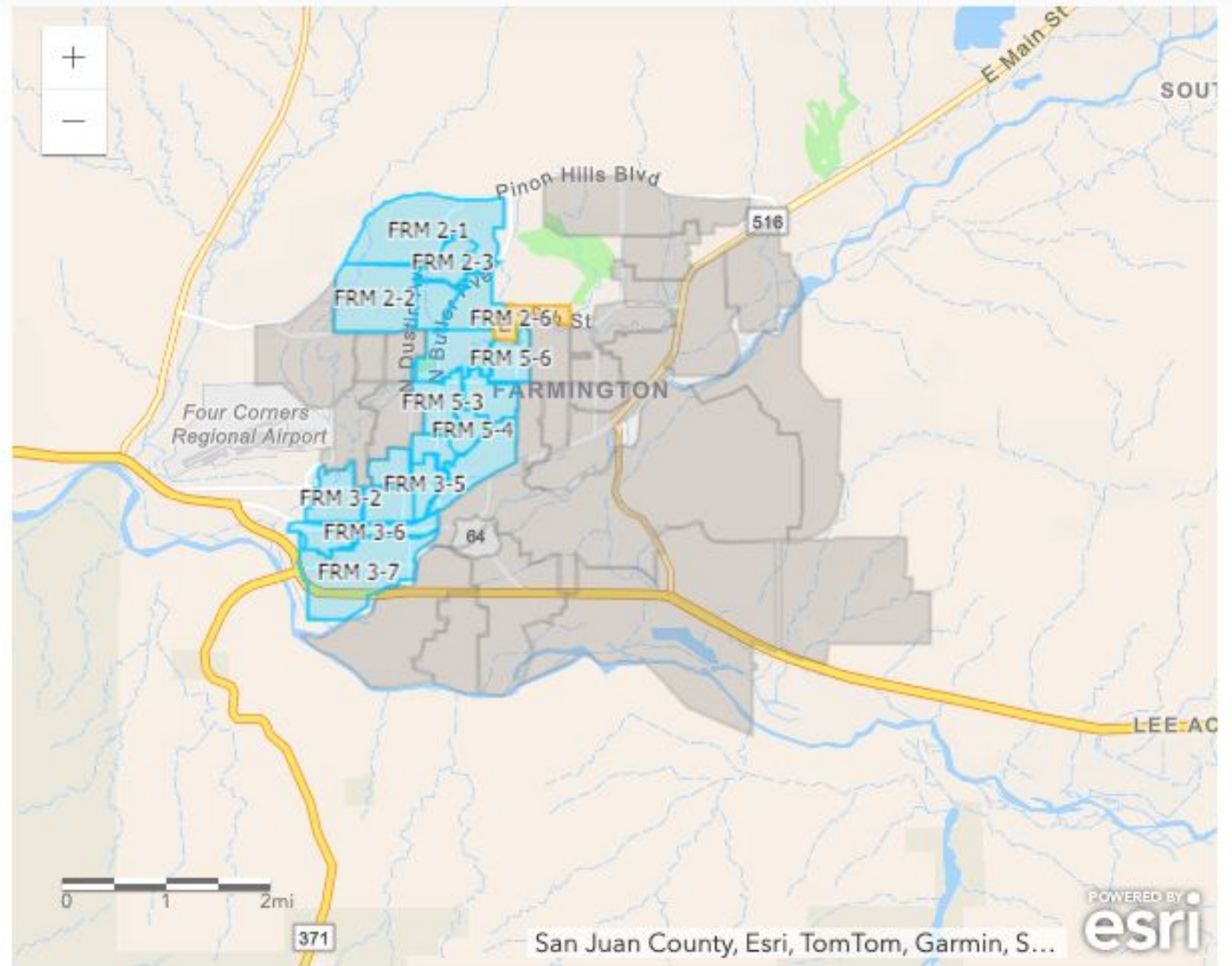
UTILITY INDEPENDENCE

- LOWEST RATES IN THE REGION
- COMPETITIVE BUSINESS RATES
- DIVERSE POWER SUPPLY
 - NATURAL GAS
 - HYDRO
 - SOLAR/BATTERY
 - GRID

FIBER UTILITY

clearnetworx

- SPEED RANGING FROM 300-2000MBPS
- COMPETITIVE BUSINESS RATES
 - \$79.95-249.95 PER MO
- SYMMETRICAL CONNECTIVITY



Click each zone for notes on construction.

- Planning Phase
- Waiting on Construction
- Under Construction
- Live!

WATER

- 3 RIVERS
- 60% OF NM SURFACE WATER
- DEDICATED RESERVOIR (LAKE FARMINGTON)
- DAM RAISE STUDY



FARMINGTON

Diversification Targets

- Outdoor Recreation Industry
- Value Added Agriculture
- Destination Retirement
- Location Neutral (Remote) Workers
- Film
- Energy
- Quality of Place/Retail



Retire Northwest New Mexico

 MakeMyMove



The *Heart*
DOWNTOWN FARMINGTON
A Main Street Project

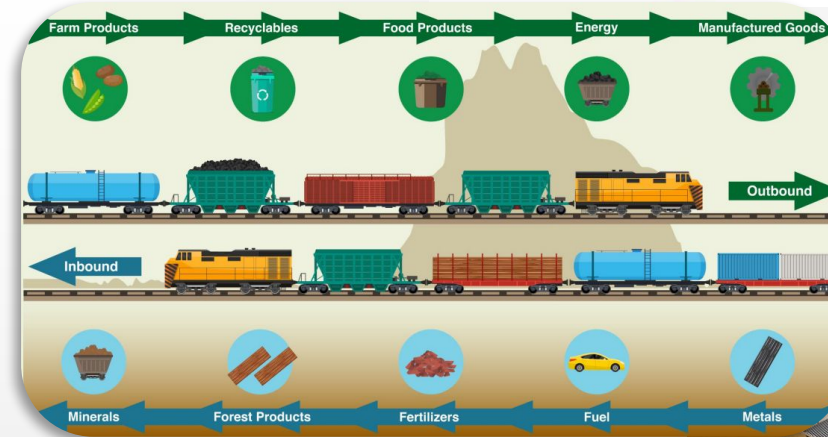


FARMINGTON



Strategic Priorities/Needs

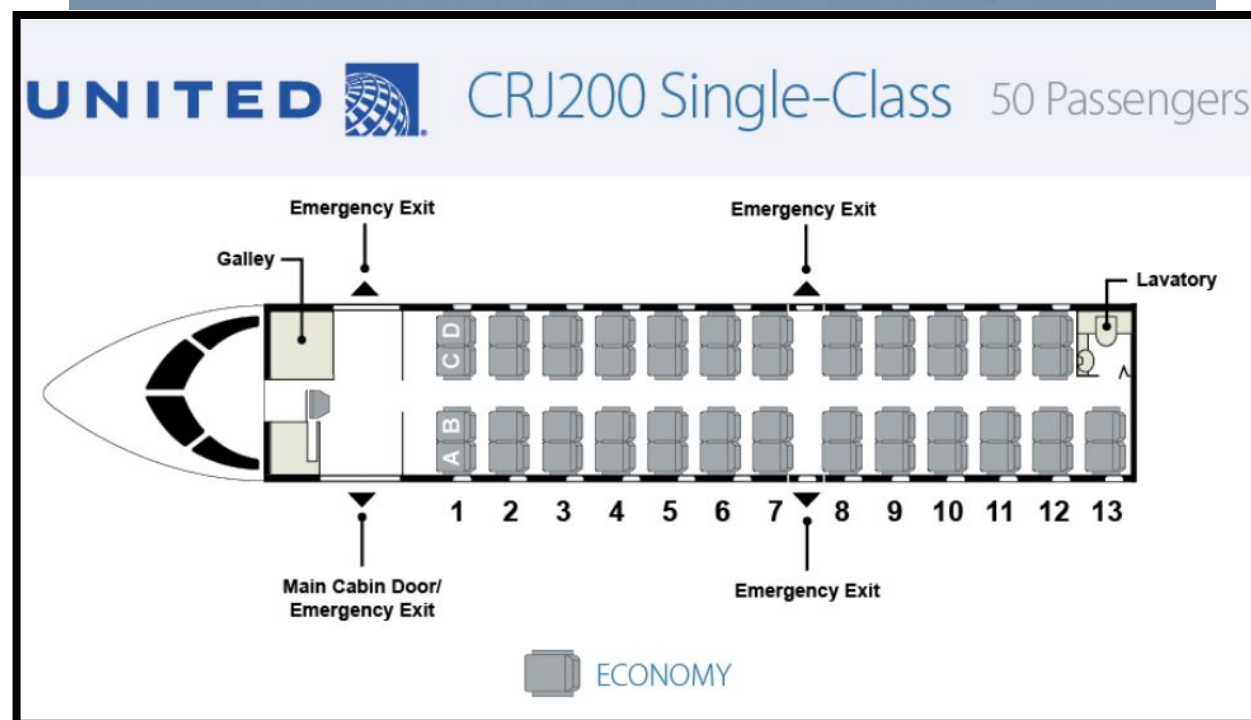
- Future of Energy
- Workforce Retention & Attraction
 - Housing
- Logistics and Distribution
- Site Readiness and Spec Buildings
- Destination Making through Outdoor Recreation and Arts



FLIGHT SERVICE

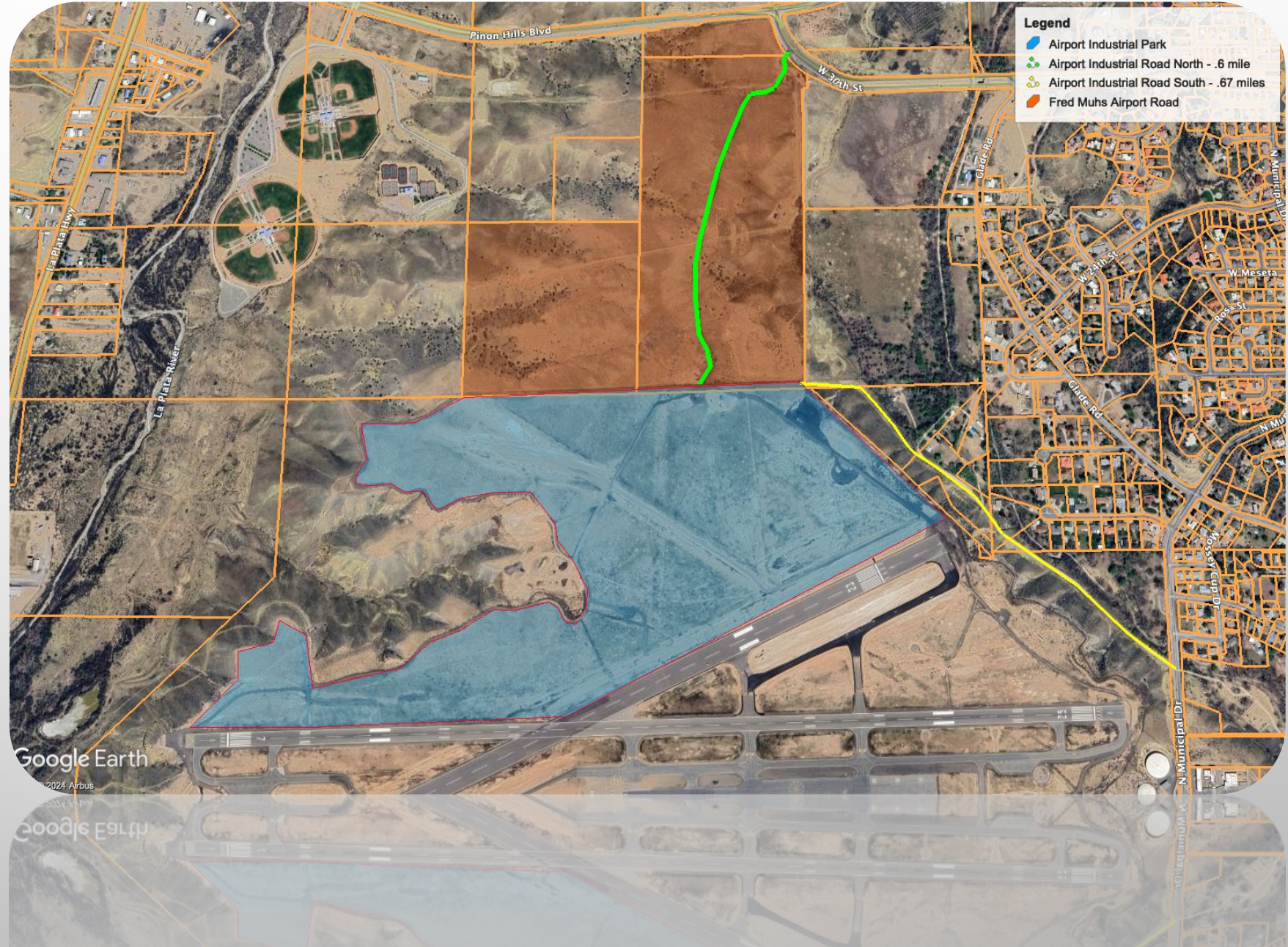
• SKYWEST/UNITED COMMERCIAL SERVICE

- COMMERCIAL SERVICE TO BEGIN OPERATION ON MAY 8TH
- TICKET SALES TO OPEN ON JANUARY 23RD
- DAILY SERVICE TO DENVER WITH CONNECTIONS AROUND THE NATION
- MORNING DEPARTURE AND EVENING RETURN FLIGHTS TO MAXIMIZE CONNECTIONS IN DENVER



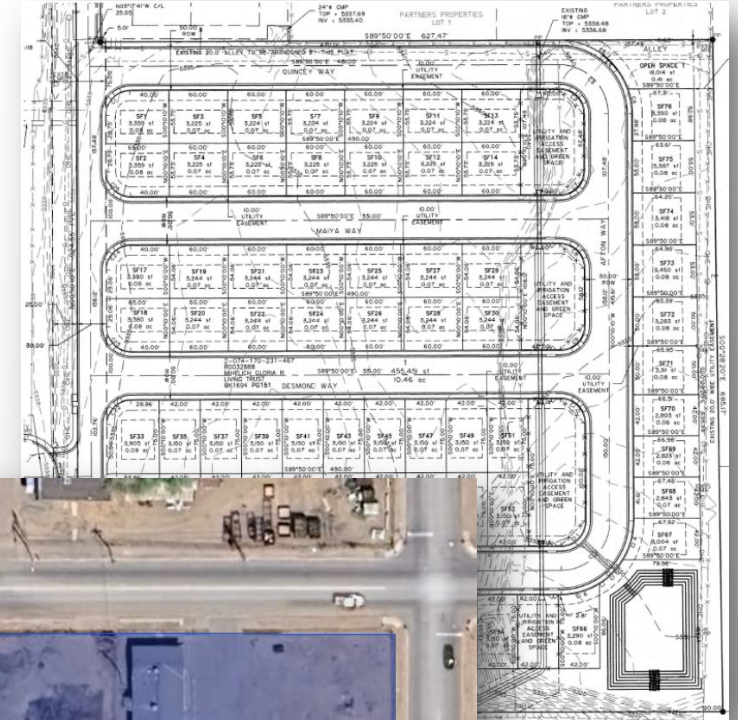
AIRPORT INDUSTRIAL PARK

- 120 USABLE ACRES
- FLAT TOPOGRAPHY
- ACCESS TO UTILITIES
- SITE READINESS STUDY AND COMPLETE
 - GEOTECH STUDY
 - ACCESS ROAD
 - UTILITIES



HOUSING

- “ATTAINABLE” HOUSING CRITICAL FOR WORKFORCE
- INCENTIVIZING HOUSING IN MRA
- SITE READINESS WITH CITY LAND



MAJOR CONSTRUCTION PROJECTS

- PINON HILLS BLVD \$46M+
EXTENSION/BRIDGE
- LDS TEMPLE – NEARING
COMPLETION
- NEW HOSPITAL – UNDER
CONSTRUCTION
- AMAZON DISTRIBUTION
CENTER – NOW
OPERATIONAL



MAJOR PROJECTS COMPLETED

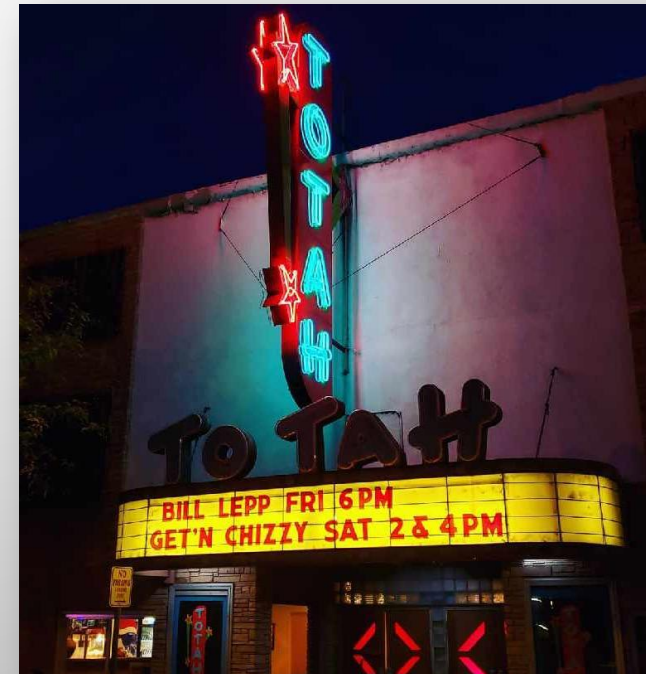
- DOWNTOWN COMPLETE STREETS - \$12M+



- BISTI BAY - \$8M+



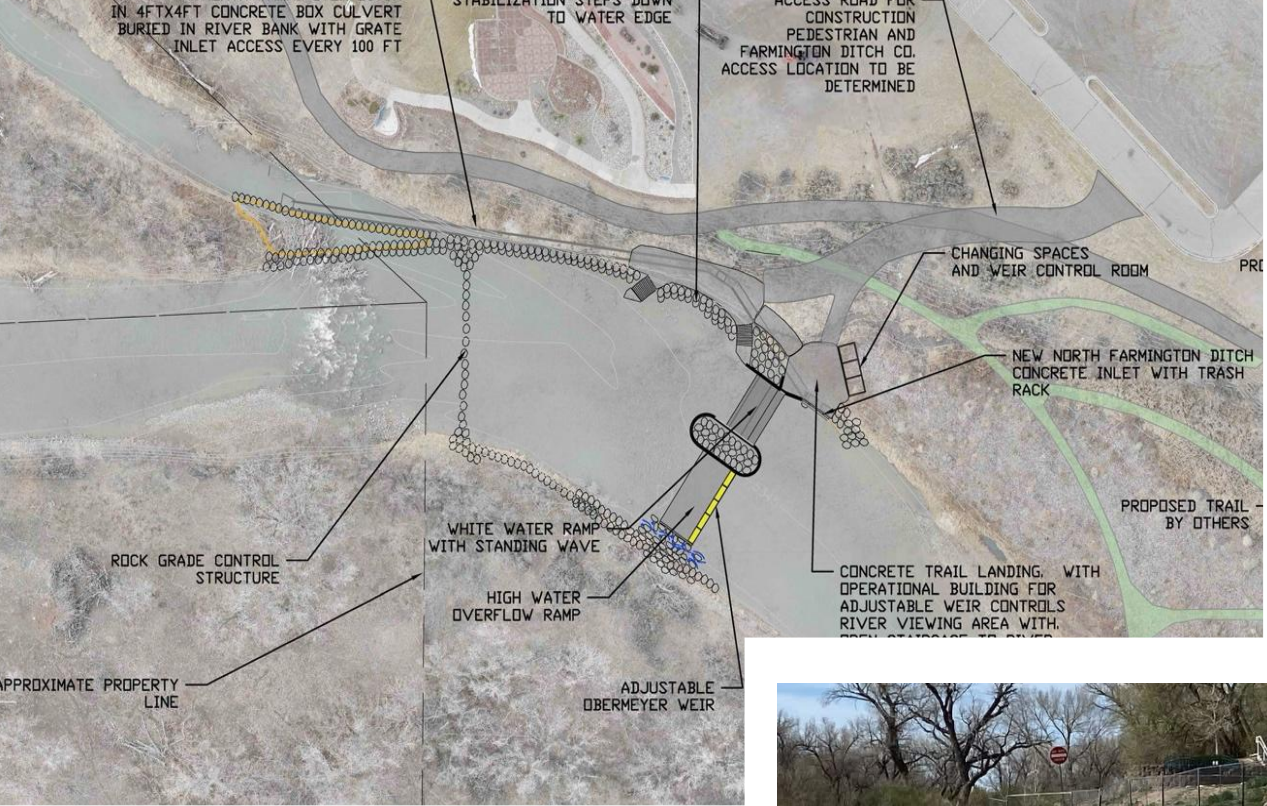
- TOTAH THEATER RENOVATION PARTNERSHIP
(SEATS, TECH, FIRE SAFETY, A/V, INTERIOR) - \$1.5M



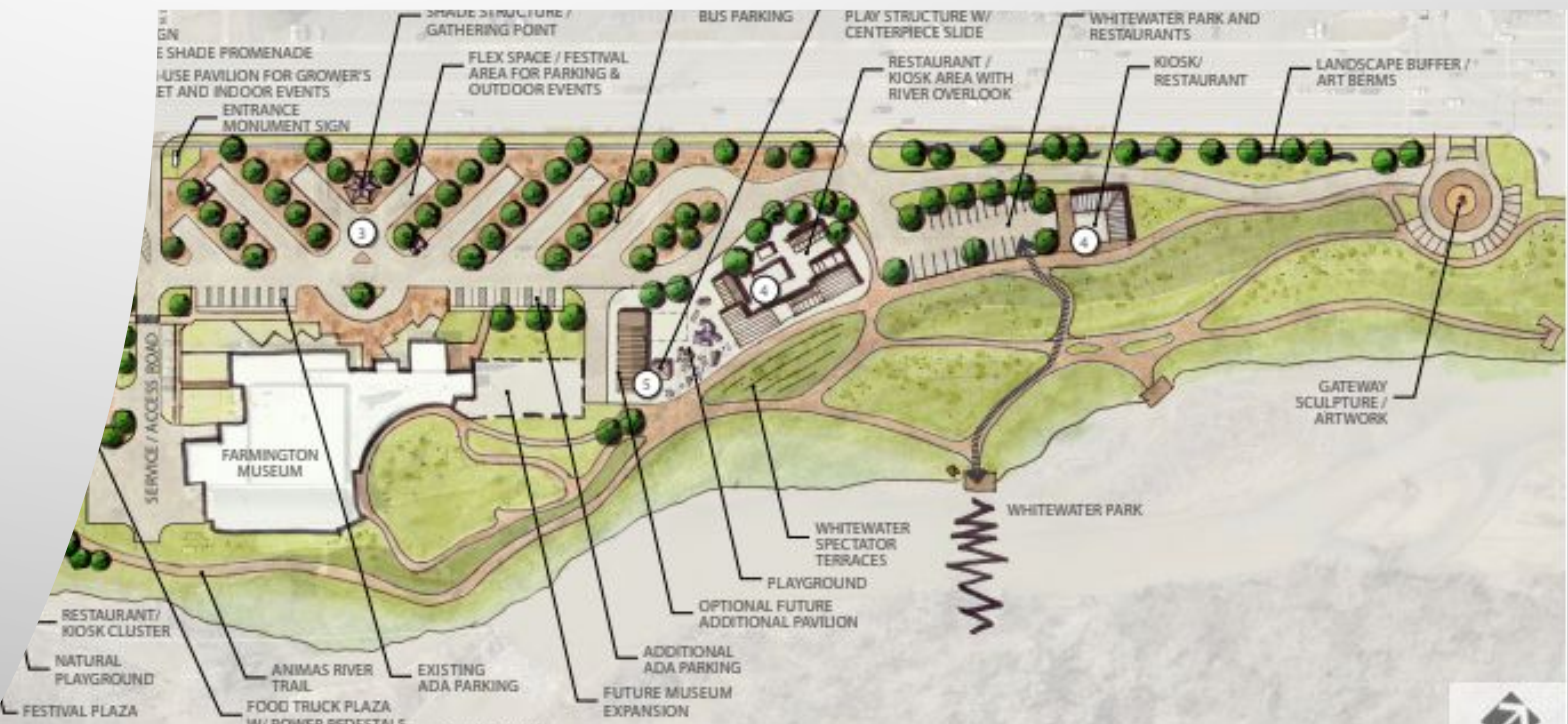
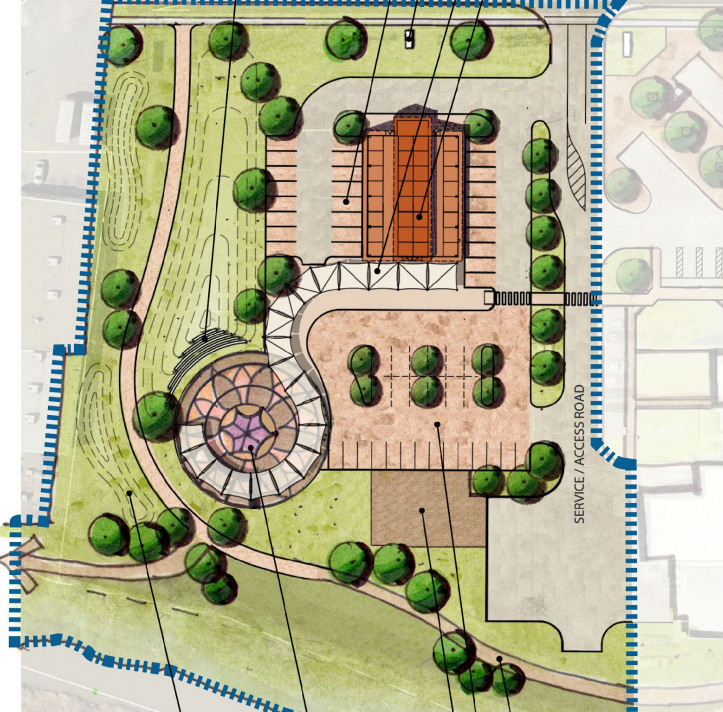
MAJOR PROJECTS COMPLETED

- AMONG THE WATERS RIVER TRAIL EXPANSION - \$1.2 M
- PIÑON HILLS GOLF COURSE - \$9 M+
- LAKE FARMINGTON AQUA PARK
- RIVER WAVE FEATURE - \$3 M



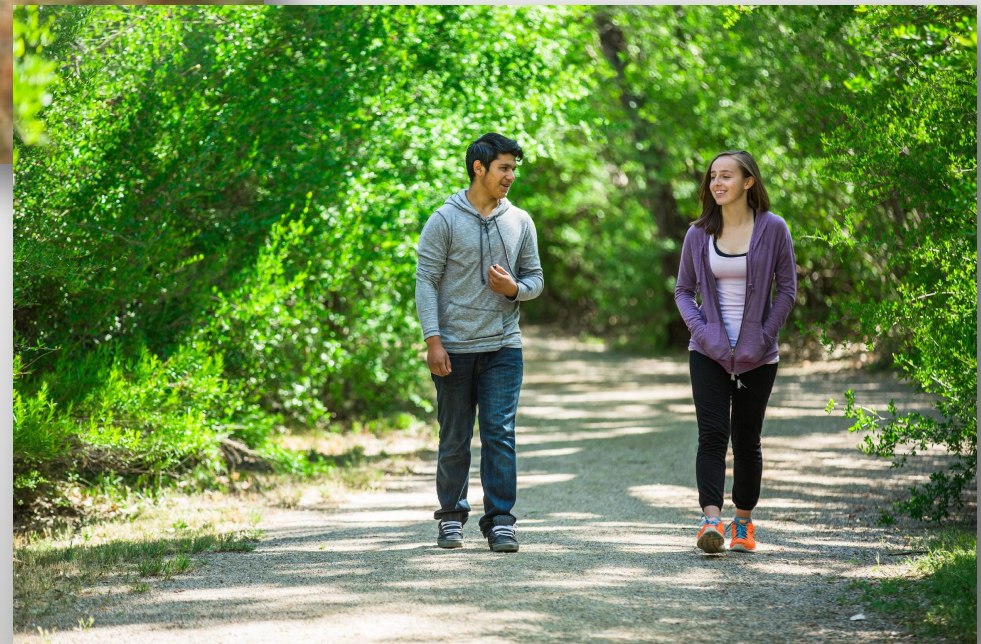


GATEWAY PARK



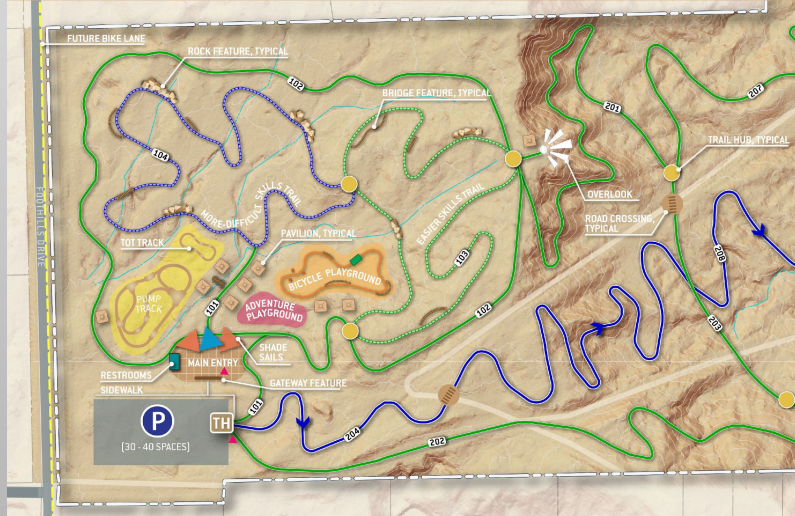


UPCOMING ORI PROJECTS





MAIN ENTRY / PHASE 1



JUNIPER BASIN

NORTH TRAIL EXTENSION





Nate Duckett
Mayor
City of Farmington