

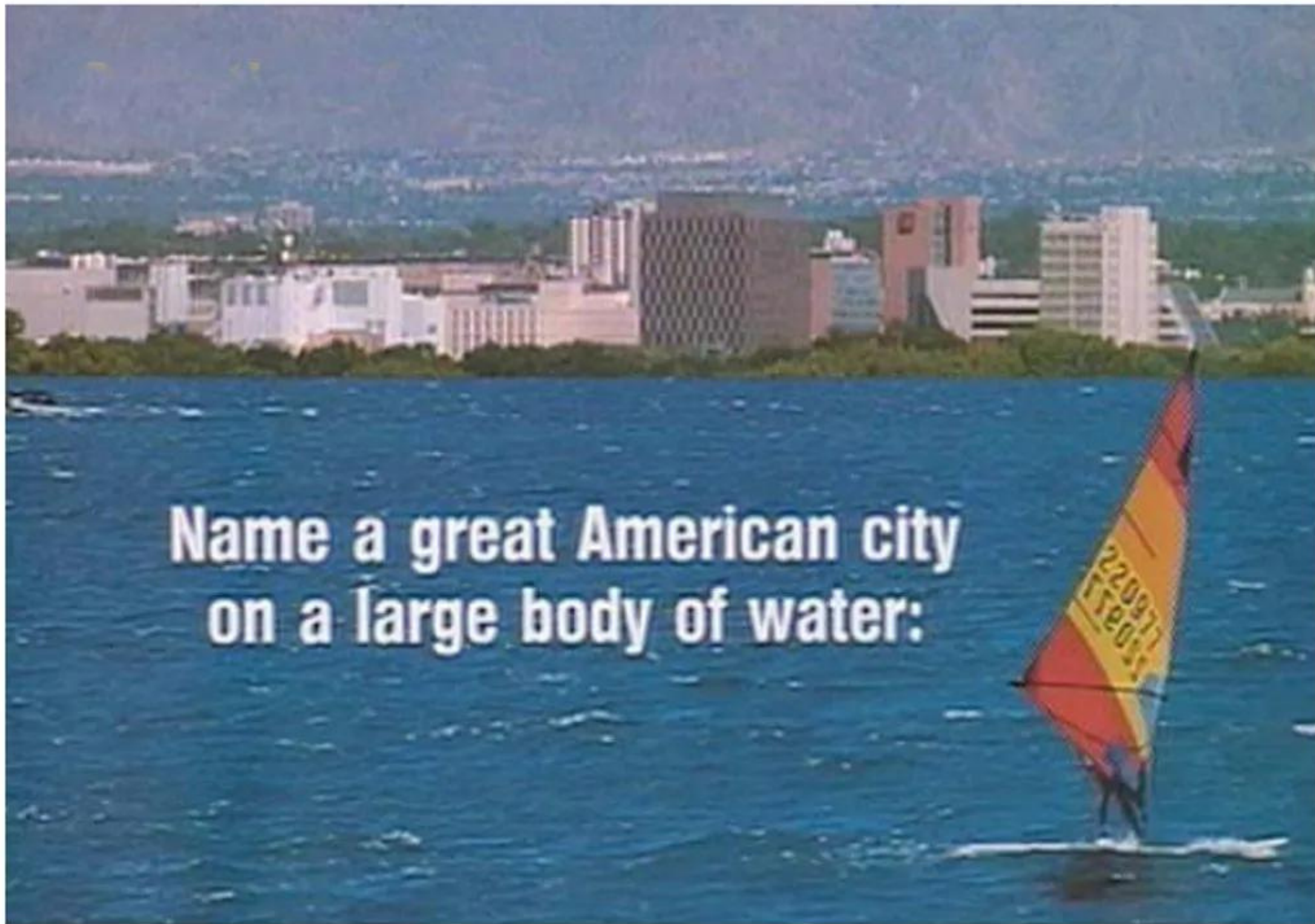
THE STRATEGIC WATER SUPPLY AND BRACKISH WATER

Water and Natural Resources Committee

August 26, 2024



Tricia Snyder
Rivers and Waters Program Director
New Mexico Wild
Tricia@nmwild.org



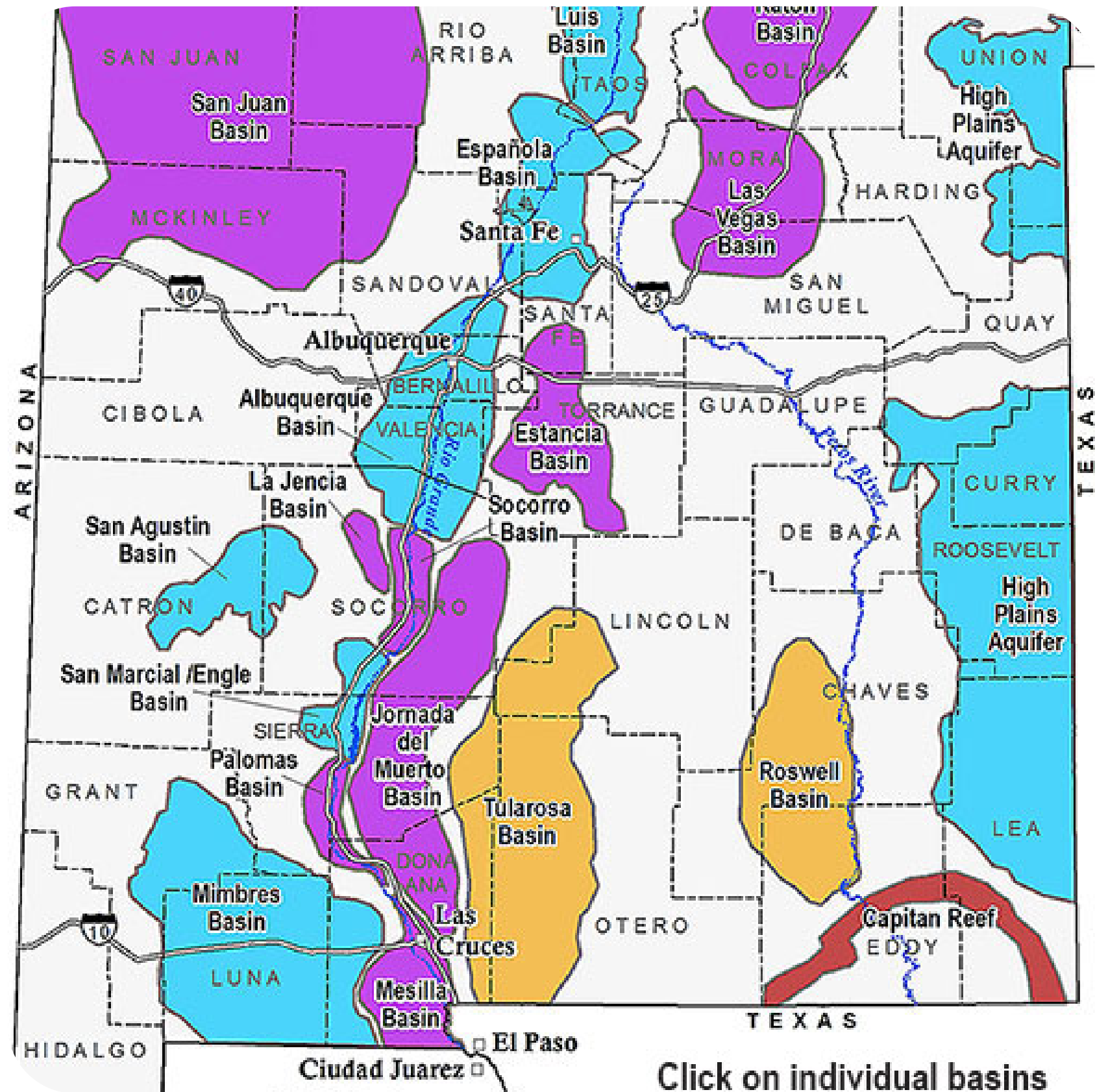
**Name a great American city
on a large body of water:**

Albuquerque Living – October, 1984

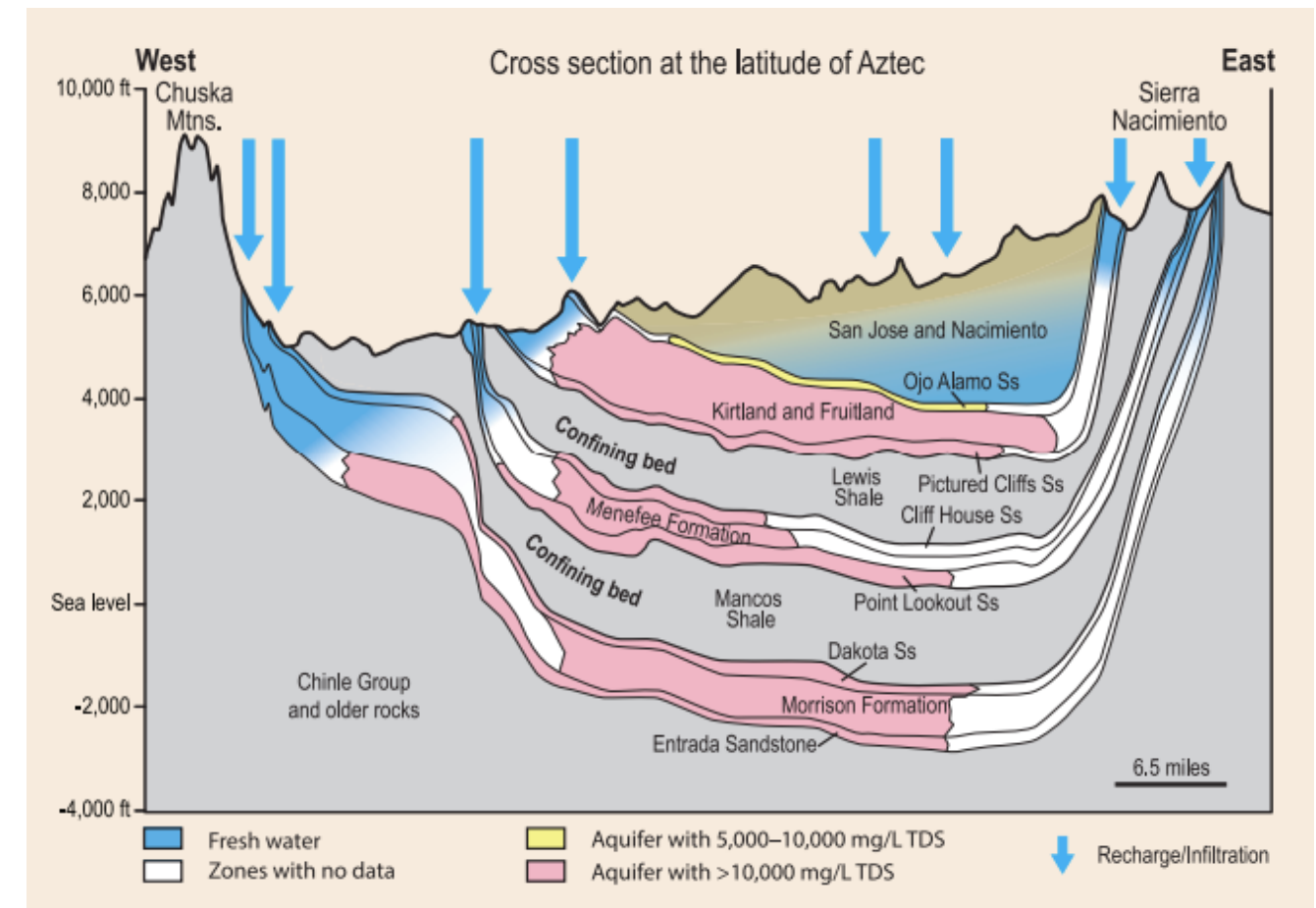
Additional information is needed


We don't have a detailed and quantitative understanding of brackish water resources throughout most of NM

Water quality data from existing water supply wells are insufficient to thoroughly capture needed information




Click on individual basins



A large, dynamic splash of water in shades of blue and white, moving from the top left towards the bottom right. It is set against a white background with blue rectangular accents in the top-left and bottom-left corners.


We ask
the
legislature
to
consider
the
following

1. Do we have enough information to ensure this deep brackish groundwater is not connected to shallower groundwater and/or surface waters?




We ask
the
legislature
to
consider
the
following

2. Do we have sufficient protections for existing water rights owners to ensure their water rights are not impacted by pumping of this deep brackish groundwater?

A dynamic splash of water in shades of blue and white, moving from the top left towards the bottom right. It is set against a white background with a light grey rectangular area containing text.

We ask
the
legislature
to
consider
the
following

3. Are we promising additional water now, only to further exacerbate our water security challenges down the road?

A decorative graphic featuring a blue water splash that flows from the top left towards the bottom right, partially overlapping a light grey rectangular area. The splash consists of numerous small droplets and larger, more defined water shapes. The background of the slide is white, with a solid blue rounded rectangle in the top left corner and another in the bottom left corner.

We ask
the
legislature
to
consider
the
following

4. Have we appropriately considered how and where the concentrated waste resulting from treatment of this brackish water will be disposed of?

A possible path forward...



- Full funding of the Aquifer Mapping Program
- Identify where brackish water might be used
- Investigate feasibility in those places specifically, including potential impacts to the environment and overall economic feasibility
- Further consideration of what the Office of the State Engineer's role in oversight of this deep groundwater extraction should be

Water can't wait



FACING NEW MEXICO'S 21ST CENTURY

WATER

CHALLENGES

A REPORT OF THE
NEW MEXICO WATER POLICY
AND
INFRASTRUCTURE TASK FORCE



THANKS!

Tricia@nmwild.org
www.nmwild.org