



Rio Grande Trail

PROJECT UPDATE FY 23

JULY 2023

Trail Alignment

- Total Trail Mileage
576.4
- Designated Trail Mileage
88.55
- Trail Mileage in Process to be Designated
~130

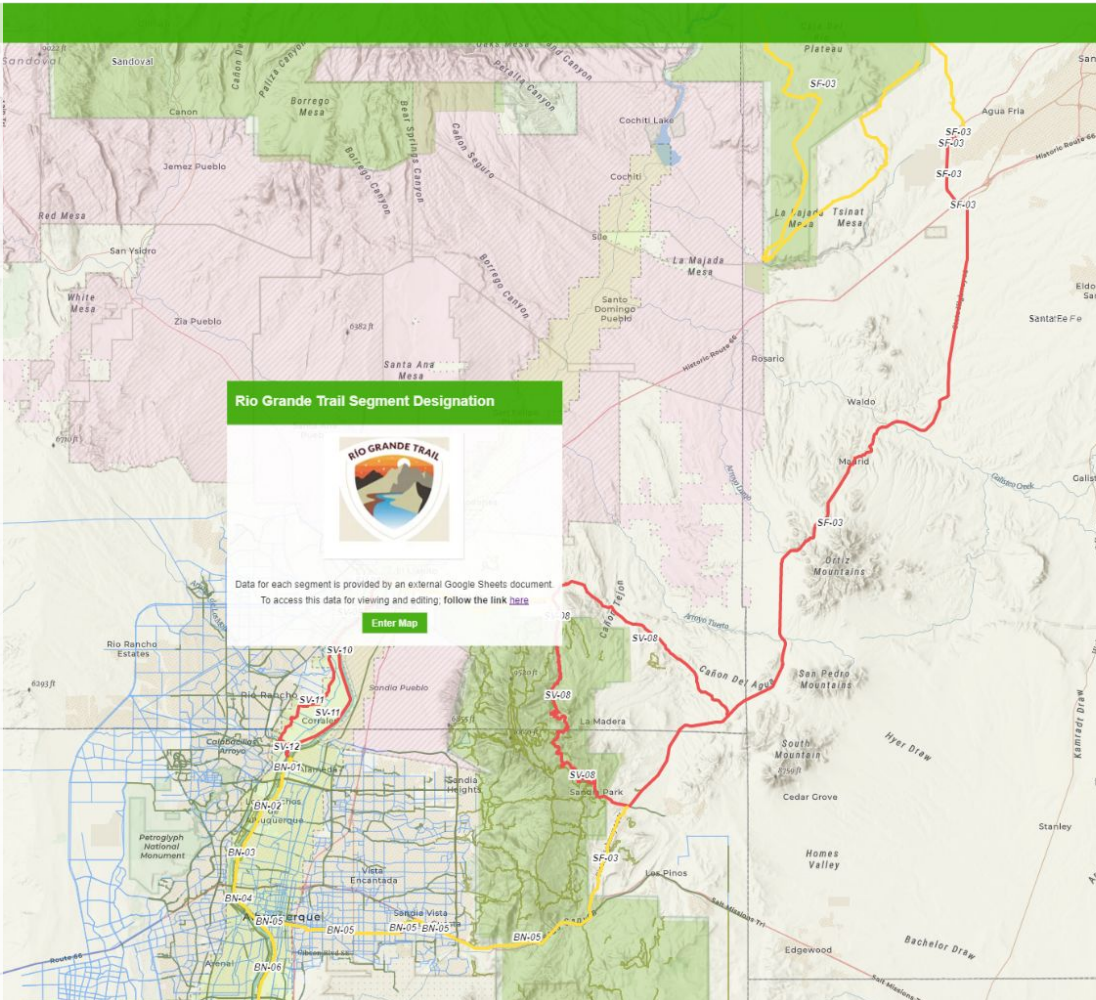


Trail Alignment

Rio Grande Trail Alignment:
The trail alignment recommended in the master plan

Existing Trails Alignment:
An existing, publicly accessible path already managed as a trail facility and part of the Rio Grande Trail alignment

Designated:
Alignment segment formally adopted as Rio Grande Trail by the Rio Grande Trail Commission



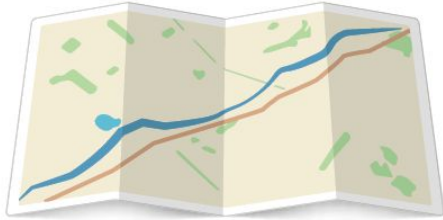
Link to Rio Grande Trail Map:

<https://www.arcgis.com/apps/View/index.html?appid=da9ca29a58a143e18af5e8b9abf46a2c>



FY23 Scope of Work

a Confirm trail alignment



b Meet with all stakeholders



c Develop strategies to address management, maintenance, and liabilities



d Complete Alignment Designation Application



e Support stakeholders in the application for funding



f Design and develop the trail



Overall Accomplishments

40+ Stakeholder Meetings

2 Alignment Committee Meetings

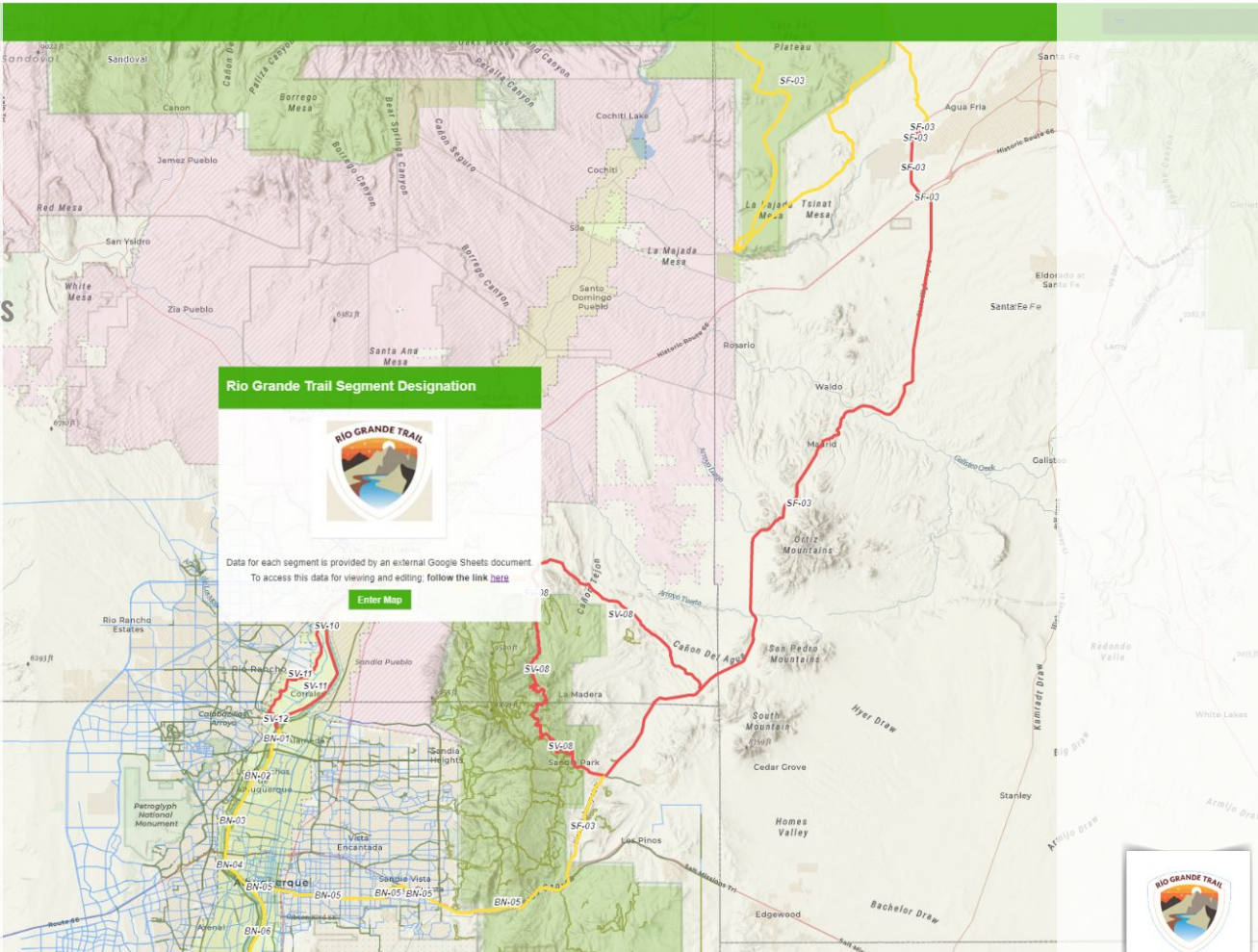
3 Tribal Meetings

4 Capacity Building Meetings

1 Public Meeting

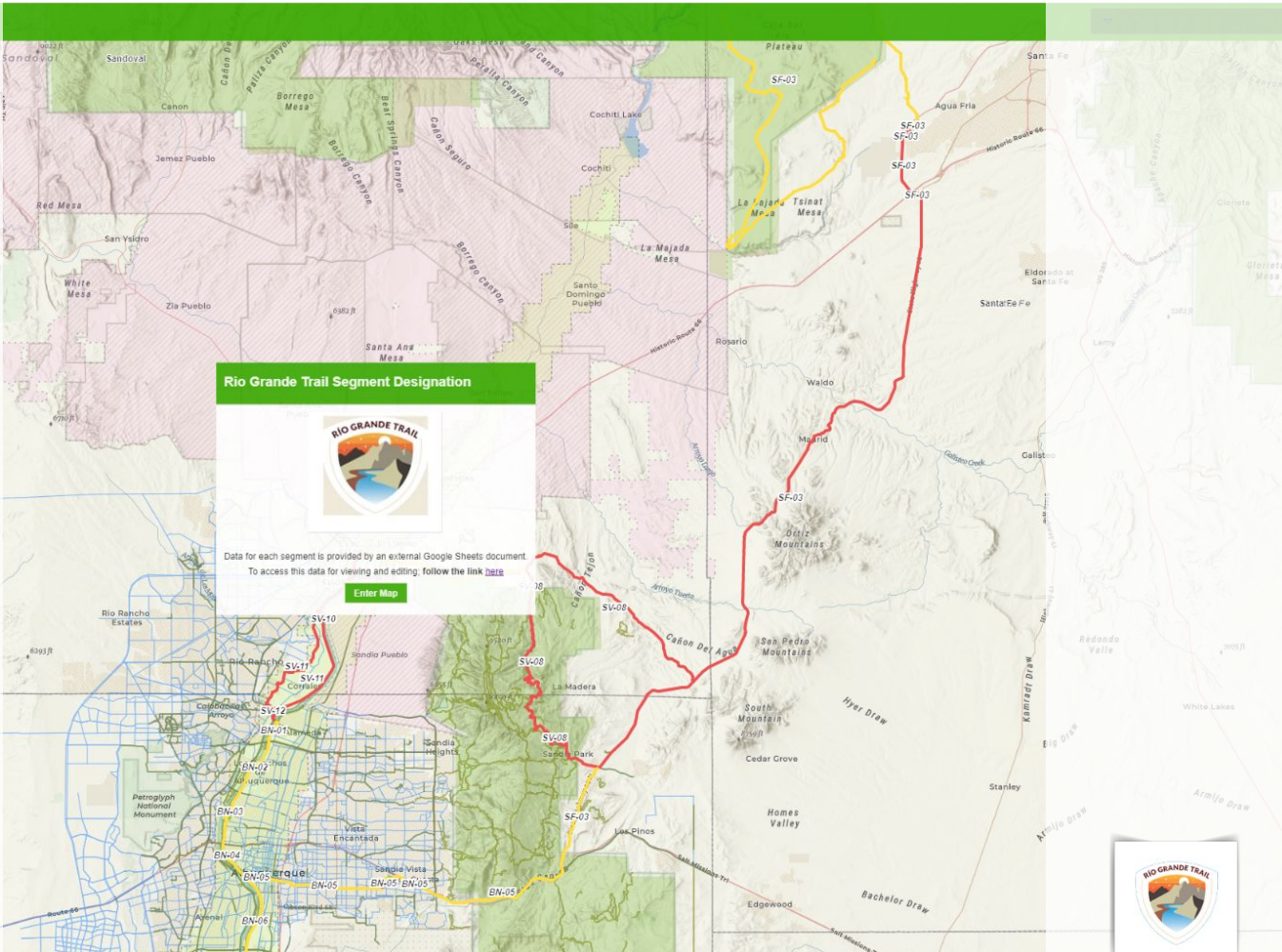
250+ Participants

~130 miles considered for designation



Overall Accomplishments

- Updated Project Website
- Developed Interactive Project Map tied to a Spreadsheet. Spreadsheet includes project information and related projects.
- Developed/Updated Stakeholder list.



Capacity Building Sessions

1. **Financing and Management (Sean O'Shea)**
 - a. *Non-traditional trail financing for trail maintenance and management*

2. **Trail Funding (Eric Aunie, Tim Rogers, Bianca Borg, Jenny Jackson)**
 - a. *Funding strategies*
 - b. *How to create successful grant proposals*

3. **Trail Signage & Trail Etiquette (Matthew Nelson, Arizona Trail Association, Loren Bell)**
 - a. *Signage Design*
 - b. *Land Acknowledgment*

4. **Trail Design Strategies (Henry Lanman, Alex Scott, Kerry Wood, Joey Klein)**
 - a. *Trail design & development*
 - b. *Tools*

CASE STUDY

- > Create opportunities for tribes to tell their stories about places from their perspectives
- > Bilingual/trilingual signs appeal to a variety of visitors
- > Trails are indigenous resources



RIO GRANDE TRAIL
CAPACITY BUILDING SESSION #3

Welcome to Bienvenidos a Ce:wi Duag
"chao duh awig"

Where The Basket Plants Grow

Donde crecen las plantas para los cesteros

SLIDE #9

CASE STUDY

- > Integration of indigenous place names to trailhead signs and other navigational resources
- > Include meaning of names and cultural significance whenever possible
- > When cell phone connectivity is reliable, providing a digital interface so indigenous pronunciation can be seen and heard

ARIZONA NATIONAL SCENIC TRAIL
Aspen Corner

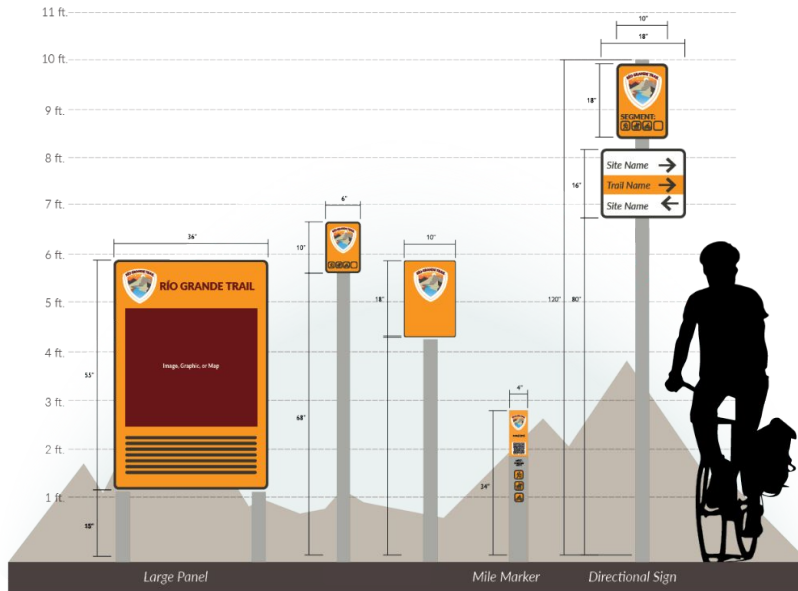
LEGEND

SLIDE #7



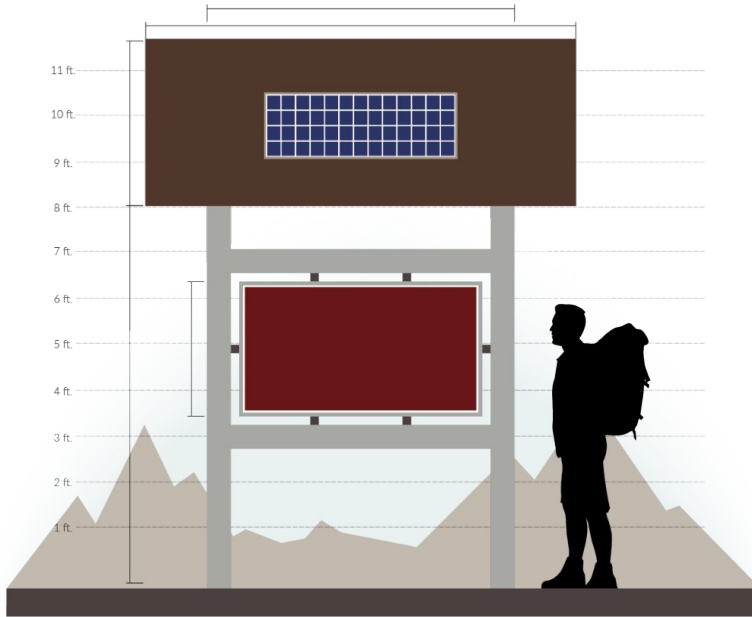
Overall Accomplishments

→ Developed Trail Signage.



Overall Accomplishments

→ Developed Trail Signage.



Overall Accomplishments

The BLM is working on a Resource Management Plan for this area, and further trail designations may have to wait until the plan is completed.

Taos Pueblo would like to incorporate information into signage to guide trail users to be good stewards of the land, its people, and the environment.

Taos Pueblo would like to stay engaged with the project.

Taos Ski Valley would like to have a trail connection to the RGT trail.

Doña Ana County
56 miles designated
9 miles ready for designation

TRAIL AVAILABILITY

- Designated
- Undesignated
- Proposed

LAND OWNERSHIP

- Private
- Tribal Land
- State
- Forest Service (FS)
- Forest Service Wilderness (FSW)
- Bureau of Land Management Land
- Bureau of Recreation (BOR)
- Department of Agriculture (DOA)
- National Park Service (NPS)
- Irrigation District



Overall Accomplishments

Another proposal identifies a slightly revised alignment that caters to equestrians within Caja del Rio. This segment has been discussed with Santa Fe County Commissioners. There is some support and excitement behind this alignment and it could be designated soon.

Cochiti Pueblo has voiced concerns about trail users and increased trespassing on their land.

Cochiti Pueblo would like to stay engaged and informed about future trail-related activities.

Currently there is no alignment that connects Santa Fe and Española.

Opportunity to connect with existing trails and the Railrunner station.

Need coordination with NMDOT on Highway 14 alignment.

SF MPO proposes a revised alignment to align with their exciting future trails.

Sandoval County
0 miles designated
63 miles ready for designation

TRAIL AVAILABILITY

- Designated
- Undesignated
- Proposed

LAND OWNERSHIP

- Private
- Tribal Land
- State
- Forest Service (FS)
- Forest Service Wilderness (FSW)
- Bureau of Land Management Land
- Bureau of Recreation (BOR)
- Department of Agriculture (DOA)
- National Park Service (NPS)
- Irrigation District



Overall Accomplishments

Placitas Trail is in design phase and designation is in discussion.

Considerations to revise alignment on the west-side of the river to travel along existing/proposed trails closer to the river.

City of Albuquerque is working on a resolution to designate ~11.5 miles of RGT alignment along the Bosque trail.

San Felipe Pueblo concerned about increased trespassing from trail users with the pueblos boundaries, but also areas outside of the pueblo.

Would like to see pueblo involved in cultural surveys and compensated when trail is being developed.

Would like land acknowledgment to be included and trail users educated about not removing cultural artifacts.

Tijeras working on a trail kiosk and designation of trail through community.

Sandoval County
0 miles designated
15 miles ready for designation

Bernalillo County
1 mile designated
34 miles ready for designation

TRAIL AVAILABILITY

- Designated
- Undesignated
- Proposed

LAND OWNERSHIP

- Private
- Tribal Land
- State
- Forest Service (FS)
- Forest Service Wilderness (FSW)
- Bureau of Land Management Land
- Bureau of Recreation (BOR)
- Department of Agriculture (DOA)
- National Park Service (NPS)
- Irrigation District



Overall Accomplishments

Los Lunas is working on a trail along the river. This trail could be designated when developed.

Bosque Farms is eager to designate the portion of the trail in their jurisdiction.

Soil and Water Conservation District would like to coordinate wildfire prevention measures (firebreaks) to also function as trails and develop those with funding designated for wildfire prevention measures.

Valencia County
0 miles designated
3 miles ready for designation

TRAIL AVAILABILITY

- Designated
- Undesignated
- Proposed

LAND OWNERSHIP

- Private
- Tribal Land
- State
- Forest Service (FS)
- Forest Service Wilderness (FSW)
- Bureau of Land Management Land
- Bureau of Recreation (BOR)
- Department of Agriculture (DOA)
- National Park Service (NPS)
- Irrigation District



Overall Accomplishments

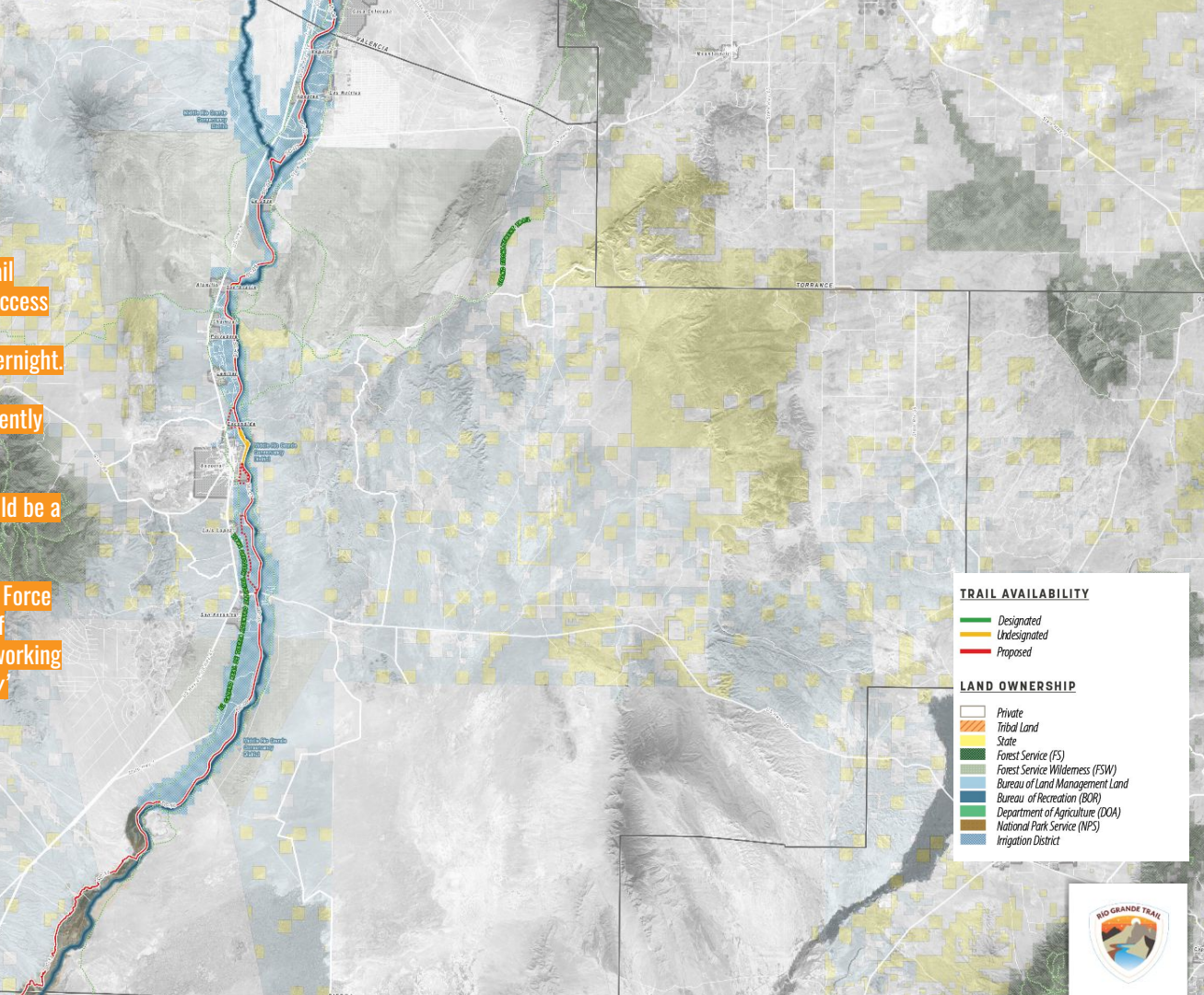
Bosque Del Apache – no formal access where the trail enters and exits the refuge. Formal entry with paid access needs to be added. No camping permitted. Need to address where through-hikers could stay overnight.

The trail must be located along lower dike road, currently on upper dike road.

The refuge is looking at mobile pay stations; this could be a model for collecting fees.

Save our Bosque Task Force - Working with the Task Force on the designation application for a 3-mile stretch of exiting trail located within the City of Socorro. And working efforts to become the first RGT 'Gateway Community'

Socorro County
0 miles designated
4 miles ready for designation

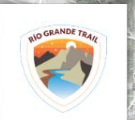


TRAIL AVAILABILITY

- Designated (Green line)
- Undesignated (Yellow line)
- Proposed (Red line)

LAND OWNERSHIP

- Private (White)
- Tribal Land (Orange)
- State (Yellow)
- Forest Service (FS) (Dark Green)
- Forest Service Wilderness (FSW) (Light Green)
- Bureau of Land Management Land (Blue-Green)
- Bureau of Recreation (BOR) (Blue)
- Department of Agriculture (DOA) (Light Green)
- National Park Service (NPS) (Dark Blue)
- Irrigation District (Light Blue)



Overall Accomplishments

T or C is working on the Turtleback Trail. This trail is slated for designation once the trail is further developed.

ENMRD is working internally to discuss trails on their land.

Bureau of Reclamation is anticipating an alignment along the east side of the Rio Grande from Elephant Butte Dam down to Rotary Park in T or C.

BOR is looking for partners to develop and maintain trails on their land. Specifically looking to engage Williamsburg.

The City of Elephant Butte is looking to improve the existing trail and add trail signage.

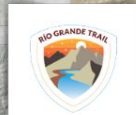
Sierra County
19 miles designated
12 miles ready for designation

TRAIL AVAILABILITY

- Designated (Green line)
- Undesignated (Yellow line)
- Proposed (Red line)

LAND OWNERSHIP

- Private (White)
- Tribal Land (Orange)
- State (Yellow)
- Forest Service (FS) (Dark Green)
- Forest Service Wilderness (FSW) (Light Green)
- Bureau of Land Management Land (Blue)
- Bureau of Recreation (BOR) (Dark Blue)
- Department of Agriculture (DOA) (Light Blue)
- National Park Service (NPS) (Brown)
- Irrigation District (Light Blue)



Overall Accomplishments

Doña Ana County is eager to designate and develop more trail segments. Currently, the County is working on a park and small trail segment and has a consultant engaged to ground-truth and designate further trail segments.

Sunland Park is working on improvements to a small trail segment.

Discussion to revise the alignment to travel along the west side of the river to connect to TX trail portion.

Paseo Del Norte Trail (TX) - Paseo Del Norte Community Foundation is open to connecting the existing trail with the Rio Grande Trail.

Doña Ana County
9 miles designated
12 miles ready for designation

TRAIL AVAILABILITY

- Designated
- Undesignated
- Proposed

LAND OWNERSHIP

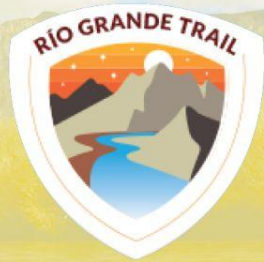
- Private
- Tribal Land
- State
- Forest Service (FS)
- Forest Service Wilderness (FSW)
- Bureau of Land Management Land
- Bureau of Recreation (BOR)
- Department of Agriculture (DOA)
- National Park Service (NPS)
- Irrigation District



Next Steps

- **Tribal Engagement**
- **Develop Non-Profit/Public-Private Partnership**
- **Website refresh**
- **Trail Branding/Wayfinding/Signage**
- **Stakeholder Engagement/Capacity Building**
- **Trail Designation**
- **Recreational Use Liability**





THANK YOU

CONTACT:

Katrina Arndt,
Project Manager,
Pland Collaborative
karndt@plandcollab.com

Carl Colonius,
Outdoor Recreation Planner,
EDD Outdoor Recreation Division
carl.colonius@edd.nm.gov



NEW MEXICO
OUTDOOR RECREATION DIVISION

pland