



LEGISLATIVE HEALTH &  
HUMAN SERVICES  
COMMITTEE

OCTOBER 6, 2025

# HSC Legislative Priorities

## Summary of Expansion and New RPSP Requests

### EXPANSION REQUESTS:

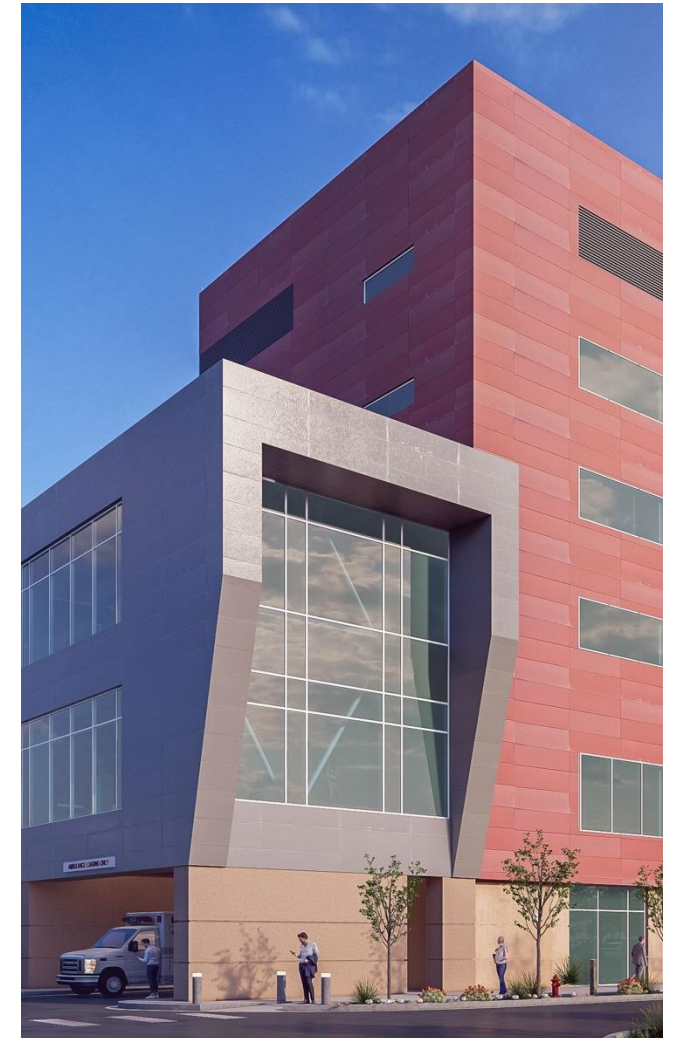
Project Title	FY26 Appropriation	FY27 Request	Δ (FY27-FY26)
ENLACE – Pathways Statewide Collaborative	\$980,700	\$3,000,000	\$2,019,300
Office of the Medical Investigator	\$11,811,200	\$16,384,700	\$4,573,500
UNM Comprehensive Cancer Center	\$8,461,400	\$10,761,400	\$2,300,000

### NEW REQUESTS:

Project Title	FY27 Request
Behavioral Health Technical Assistance Center	\$1,800,000
College of Population Health	\$2,500,000
Office of Substance Use Disorders	\$4,250,000

### CAPITAL PROJECT REQUESTS: UNM School of Medicine's new facility

### NEW MEXICO HEALTHCARE ACCESS, WORKFORCE, AND SYSTEM DEVELOPMENT



# UNM Hospital Critical Care Tower

Opened October 5, 2025



- **690,000** square feet
- **96 ICU beds**
- **18 new ORs**
- CCT cost **\$629.5 million**
- Backfill of UNM Hospital Main operating suite with reconstructed OR and Pre/Post-operative services to increase capacity, **\$40 million project**

# Clinical Updates



## Children's Psychiatric Center

- Target open date September 2026
- 32,500 square feet of modern behavioral health facility for children and adolescents
- 36 beds for inpatient behavioral health care
- Total cost: \$35 million



## West Side Primary Care Clinic

- Target open date October 2026
- 17,000 square feet
- Provide primary care, radiology, and pharmacy services to 21,000 new patient visits annually
- Total cost: \$17 million

# Clinical Updates



## Truman Clinic

- Target open date July 2026
- Total cost: \$18.7 million
- 28,353 square feet
- 37 multi-function exam rooms
- Supports 20,000 annual patient visits
- 75,000 specialized pharmacy refills per year



## Cancer Center Expansion

- Target open date/First patients March 2026
- Total cost: \$65.3 million includes:
  - TomoTherapy Linac replacement
  - Radiation oncology MRI vault
  - Theranostics suite
  - Interventional radiology
  - GMP cell therapy lab

# Health Sciences Workforce Updates

Fall 2024 - Fall 2025

Enrollment Increase

↑ 15.9%

Graduates Increase

↑ 16.3%



# Pathway Programs

## Communities to Careers

### GROWS NM HEALTH CARE WORKFORCE

- **K-20** students
- Diversifying health professions workforce
- Health career training
- Education programs

### COMMUNITY & TRIBAL PARTSHIPS

- Schools
- Clinical areas
- Community-based sites

## ENLACE NM

### PROVIDES STUDENTS

- Academic support
- College readiness
- Leadership
- Professional development
- Career exploration

### EDUCATION PARTNERSHIPS

- **UNM**
- **9 NM** higher ed. partners
- **Community allies**
- **5 NM regions:** elementary, middle, high school, undergraduate, graduate and higher education students

## UNM Combined BA/MD Program

### OUTCOMES

- **126** practicing physicians,
- **311** students on track in pipeline
- **54%** practicing in **12** towns in NM
- **27** working in their hometowns
- **57%** from minority groups in medicine
- **66%** in NM - primary care physicians

### PROGRAM HIGHLIGHTS

- **20** cohorts have enrolled
- **31** of 33 counties represented
- **232** students received MD degree

**RPSP Expansion of \$2,019,300**

# College of Nursing



## ENROLLMENT FALL '24-'25

- 32.6% growth
- 1,274 students

## FACULTY EXPANSION

- 5.5% net increase

## NEW FACILITY

- Moved in August 2024

## NATIONALLY RECOGNIZED

- US News Best Grad School Nurse Midwifery

## ENDOWMENT

- Nursing Honors Program
- Faculty Expansion
- Support of Enrolment Growth



# College of Pharmacy

## ENROLLMENT FALL '24-'25

- 3.3% growth

## RENOVATION

- **\$35M GO Bond** - approved by voters in 2024
- Est. completion - July 2027
- Research labs
- Collaborative spaces
- **80% energy savings**

## NATIONALLY RECOGNIZED

- NIH Funding
- Microplastics and Environmental Toxins



# College of Population Health



## ENROLLMENT FALL '24-'25

- 19.7% growth

## NATIONALLY RECOGNIZED

- US News Best Grad School Public Health

## FUNDING

- Seek \$2.5M to support operations made possible by previous appropriations

## SUPPORTS

- Existing personnel and Enrollment growth
- Advancing accreditation
- Maintaining research
- Community programs - health disparities

## COPH GOALS

- 321 students and 70% retention
- Produce ~225 grads serving NM yearly

**RPSP: \$2.5 for Continuation of Programs**

# Social Work Endowment

- **Endowment disbursements** over the last year have funded significant progress towards starting a Master of Social Work Program
  - Hiring 2 faculty and 1 staff
  - Initiating accreditation process, with self-study approval happening soon
  - Advancing through internal and state approvals
  - Developing program infrastructure
  - Engaging with stakeholders
- On track for starting students in Fall 2026



# HSLIC – Health Sciences Library and Informatics Center



**COMPLETED:** April 2025

## RENOVATION

- Main level renovation
- Funded by State of NM capital outlay
- Flexible design for future growth
- 67% increase in traffic



## TELEMEDICINE BOOTHS

Partnership to Improve Health and Health Equity statewide

# School of Medicine

**\$743M** Total Annual Budget

**\$134M** Research and Awards

**1,284** Faculty

**1477** Staff

**745** Residents and Fellows

**403** Medical Students

**97** Doctoral Students

**275** Graduate Students

**192** Undergraduate Students

## **UNM Medical Group**

**\$305M** Operating Revenue

**617** Employees



## **Key Educational Programs**

- Anesthesiology Assistant
- Occupational Therapy
- Bio Medical Sciences- MS/PhD
- Medical Laboratory Sciences
- Dental Hygiene
- Physical Therapy
- Emergency Medical Services
- GME - Residents and Fellows
- Physician Assistant
- Radiologic Sciences
- UME -Medical Students
- MD/PhD Program

# School of Medicine

## New Facility Project



## CAPITAL PROJECT REQUESTS: UNM School of Medicine New Facility

### UPDATE

- **330,000 SF facility** - research growth, and future flexibility
- Supports **200 med students per class**
- Enables **70+ research faculty** in modern lab space
- Includes **2 active-learning classes** and **team-based simulation space**
- Features **collaboration areas** and **study space for 400+ learners**
- **10-15% shell space** for future growth

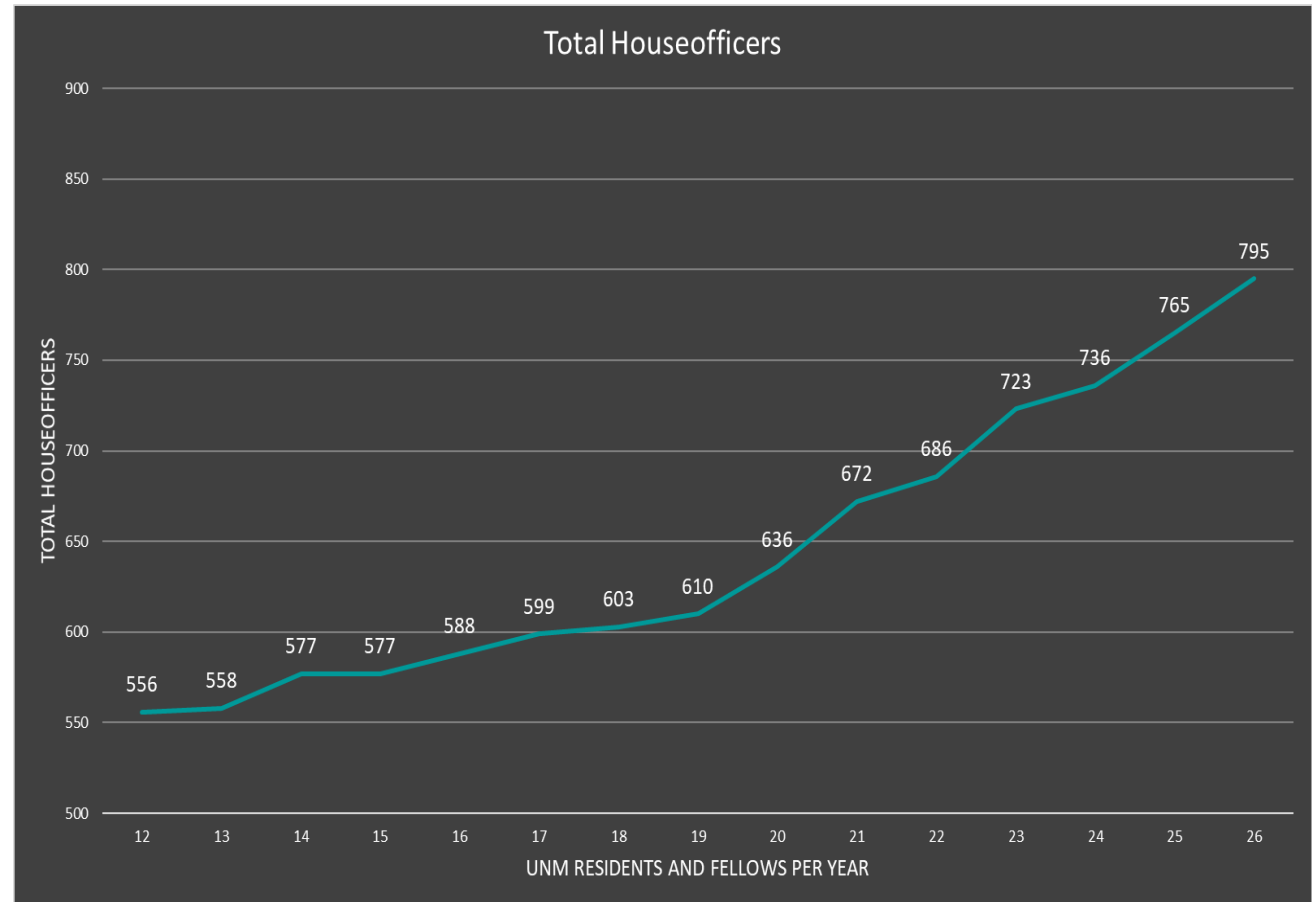
### PROGRESS

- Design began Aug. 2025 - site/program nearing completion
- Schematic design will begin Oct 2025
- Started enabling projects for site preparation

# Graduate Medical Education

UNM GME is continually growing resident and fellow classes

- Growth since 2018: **24% increase** in available slots
- **17 New GME Programs** in last five years
- This spring, more than 12,000 applicants for 174 first year resident positions
- Spring 2025, 100% of all first-year resident positions were filled through the National Residency Match Program



# Behavioral Health Reform and Investment Act



## Appropriation to UNM to Develop a Technical Assistance Center

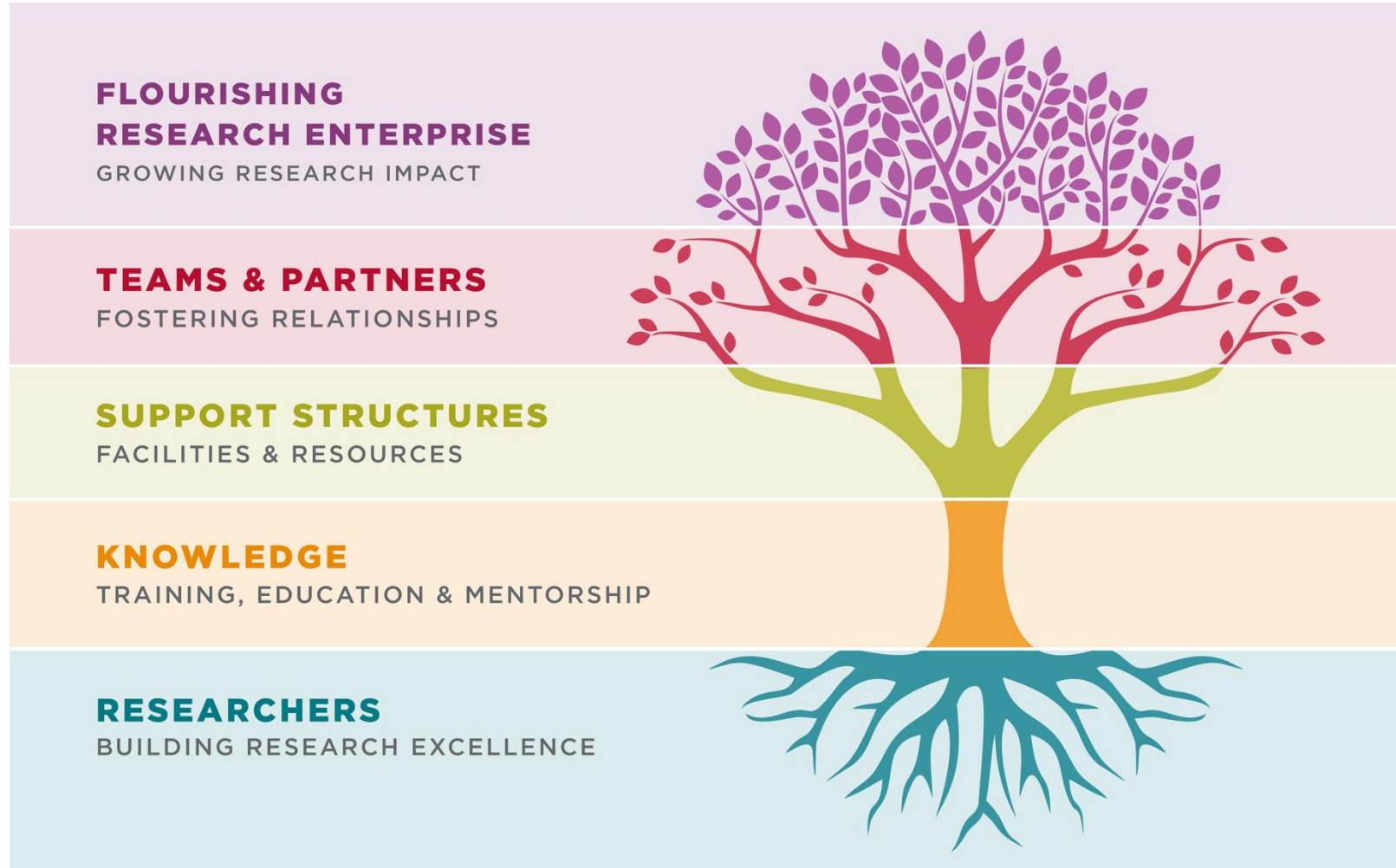
- Behavioral Health Expertise & Consultation
- Sequential Intercept Mapping & Regional Planning
- Regional Data & Reporting
- Training & Capacity Building

**Project ECHO - Redirection of \$1.5M to support BHRIA**

**RPSP - \$1.8M for continuation of Technical Assistance Center**

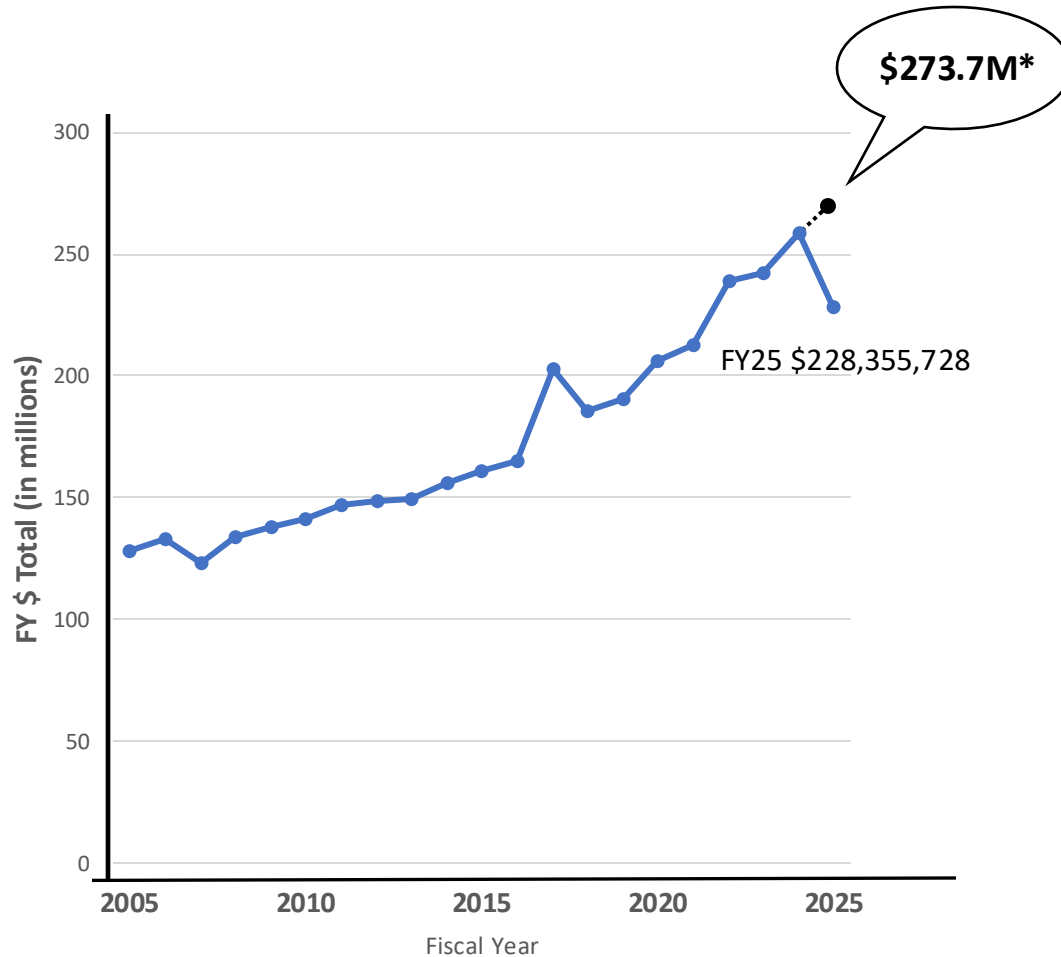


# Research Update



# Awards and Research

Responding to Current & Emerging Health Care Needs of New Mexico



\* \$273.7M represents FY25 total awards without delays and terminations.

As of 2025, the institutional focus areas include:

Substance Use Disorders

Environmental Health

Data Science/AI

Shared Resources and Cores: Office of Research, CTSC, Cancer Center, COBRE centers and others\*

\* HSC Research Resources

<https://hsc.unm.edu/research/facilities/>



# Terminated Grants

in FY25 and Projected Loss per Fiscal Year

	Loss FY25	Future Loss FY26	Future Loss FY27	Future Loss FY28	Future Loss FY29	Total Projected Loss
<b>Health Sciences Center</b>	\$ 1,222,842	\$ 1,066,432	\$ 1,002,930	\$ 606,289	\$ 164,054	\$ 4,062,547



# Federal Landscape

## And UNM's Response



Supporting NM Attorney General's Office, as well as other local and state government agencies



**Creation of UNM Research Rapid Response Team**



Bridge funding for UNM faculty and students



Research Strategy Planning Subcommittee



Collaboration with UNM Human Resources: Term Retention Initiative



Report of terminated grants to HED bi-weekly

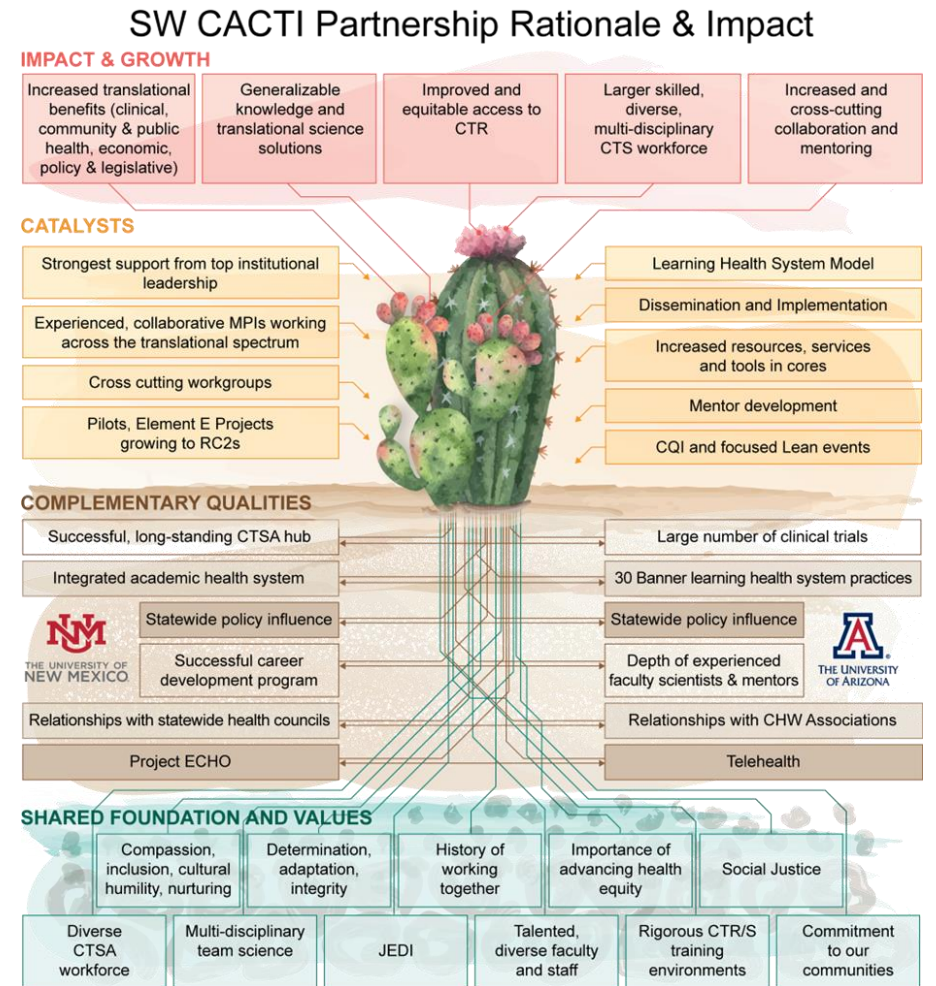
# NIH-Funded Collaborative Centers

**SW Center for Advancing Clinical and Translational Innovation (SW CACTI)**

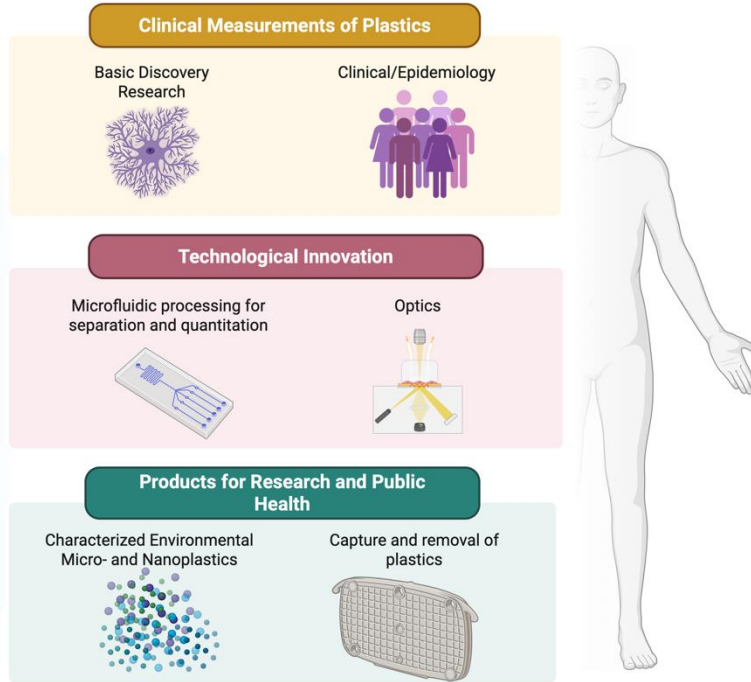
- ❖ To remove barriers to translational science, accelerate clinical translational innovation, and advance health equity in the U.S. Southwest region, UNM and UArizona have partnered to form the Southwest Center for Advancing Clinical and Translational Innovation (SW CACTI).
- ❖ 7-year award (08/01/2025 – 06/30/2032); Total amount: \$38,783,353
- ❖ Additional funding for K12 Mentored Research Program: \$4,834,705

**CARE for Health™ Initiative**

- ❖ **Primary Care - Building Research Integration in Diverse Geographic Environments (PC-BRIDGE)** Partnering with primary care clinics and Health Extension agents (HEROs) to expand engagement in clinical research
- ❖ \$2M, 1/20/25-1/19/26; *pending*: \$1.4 M, 1/20/26-12/19/26
- ❖ Clinical trials underway:
  - Remote Tai Chi for Knee Osteoarthritis: An Embedded Pragmatic Trial (TAICHIKNEE)
  - Supporting Peer Interactions to Expand Access to Digital Cognitive Behavioral Therapy for Spanish-speaking Safety-Net Patients in Primary Care (SUPERA)



# Microplastics Research at UNM



- Discovered and quantified microplastics in human brain, liver, kidney, testes, and placenta
- Showed higher levels in brains of dementia patients
- Found that concentrations of microplastics are increasing over time
- Currently working with >30 research partners on new investigations ranging from cancer to cardiovascular disease to reproductive health
- Developing novel commercially viable technologies

- NIH/NIGMS U01: Microplastics role in Dementia (Campen)
- NIH/NIEHS: Microplastics in colorectal cancer (Xue)
- NIH/NIEHS: Microplastics in inflammatory bowel disease (Castillo)

nature medicine

Brief Communication

<https://doi.org/10.1038/s41591-024-03453-1>

## Bioaccumulation of microplastics in decedent human brains

Received: 29 April 2024

Accepted: 9 December 2024

Published online: 03 February 2025

Check for updates

Alexander J. Nihart<sup>1,2</sup>, Marcus A. Garcia<sup>1,2</sup>, Eliane El Hayek<sup>1,2</sup>, Rui Liu<sup>1</sup>, Marian Olewine<sup>1</sup>, Josiah D. Kingston<sup>1</sup>, Eliseo F. Castillo<sup>3</sup>, Rama R. Gullapalli<sup>3</sup>, Tamara Howard<sup>4</sup>, Barry Bleske<sup>5</sup>, Justin Scott<sup>6</sup>, Jorge Gonzalez-Estrella<sup>6</sup>, Jessica M. Gross<sup>7</sup>, Michael Spilde<sup>8</sup>, Natalie L. Adolph<sup>9</sup>, Daniel F. Gallego<sup>9</sup>, Heather S. Jarrell<sup>9</sup>, Gabrielle Dvorscak<sup>9</sup>, Maria E. Zuluaga-Ruiz<sup>9</sup>, Andrew B. West<sup>10</sup> & Matthew J. Campen<sup>10</sup>

The New York Times

## What Are Microplastics Doing to Our Bodies? This Lab Is Racing to Find Out.

Inside a New Mexico lab, researchers estimate there is five bottle caps worth of plastic in human brains. Now they are trying to find out its effects.



DONATE

Shots

YOUR HEALTH

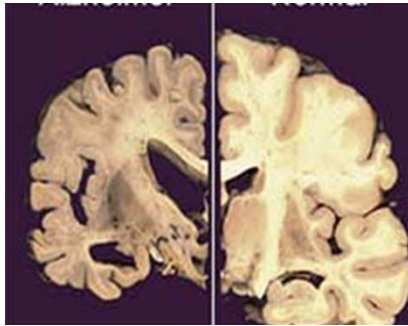
### Plastic junk? Researchers find tiny particles in men's testicles

MAY 22, 2024 · 8:07 AM ET

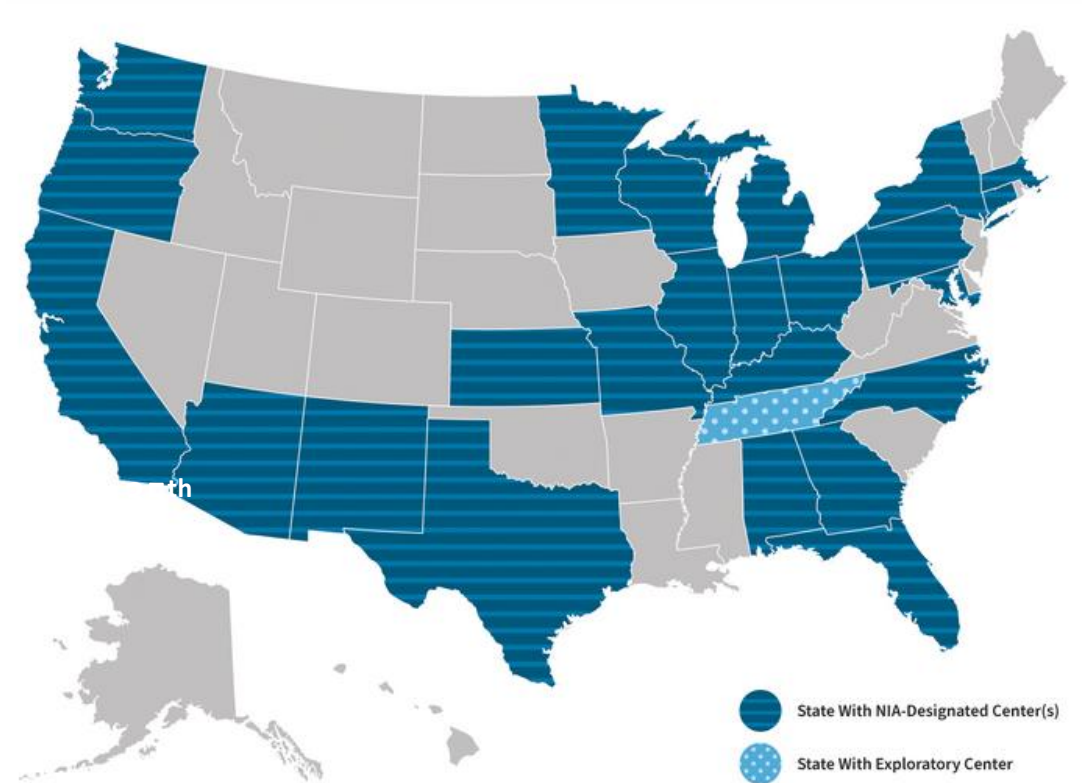
By Will Stone



# NM NIH-Designated Alzheimer's Disease Research Center

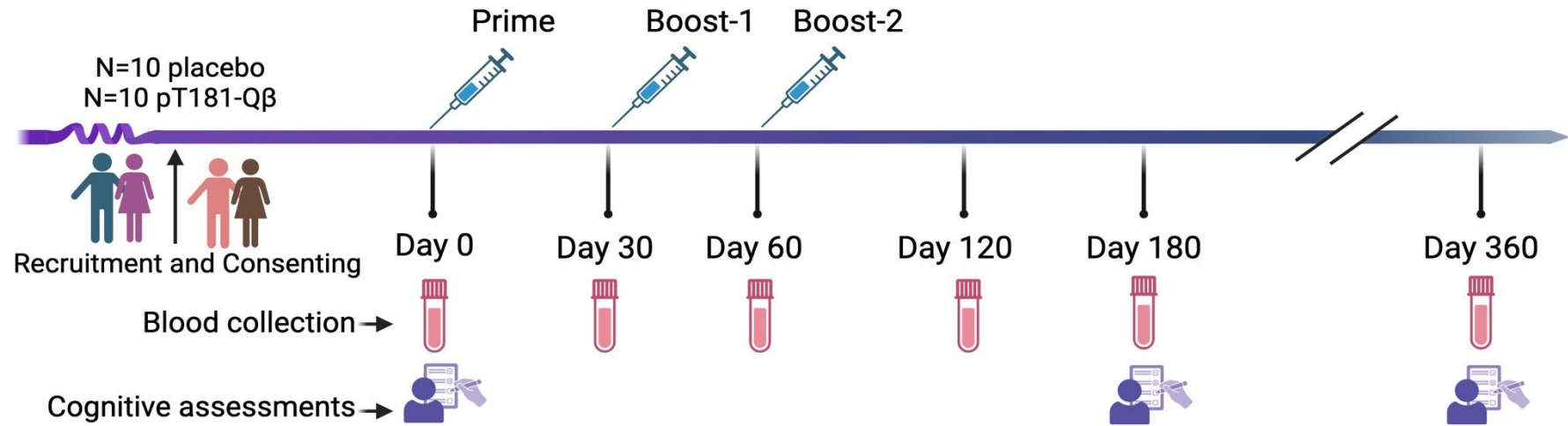


- NIH Core Center Grant (P30)
- Multidisciplinary, cross-campus approach
- Aims to identify biomarkers to improve early diagnosis and promote healthy aging
- Educating the next generation of scientists and health care workers in New Mexico



# Alzheimer's Vaccine

the Phase 1a/1b trial Fall, 2026!



ALZHEIMER'S ASSOCIATION®

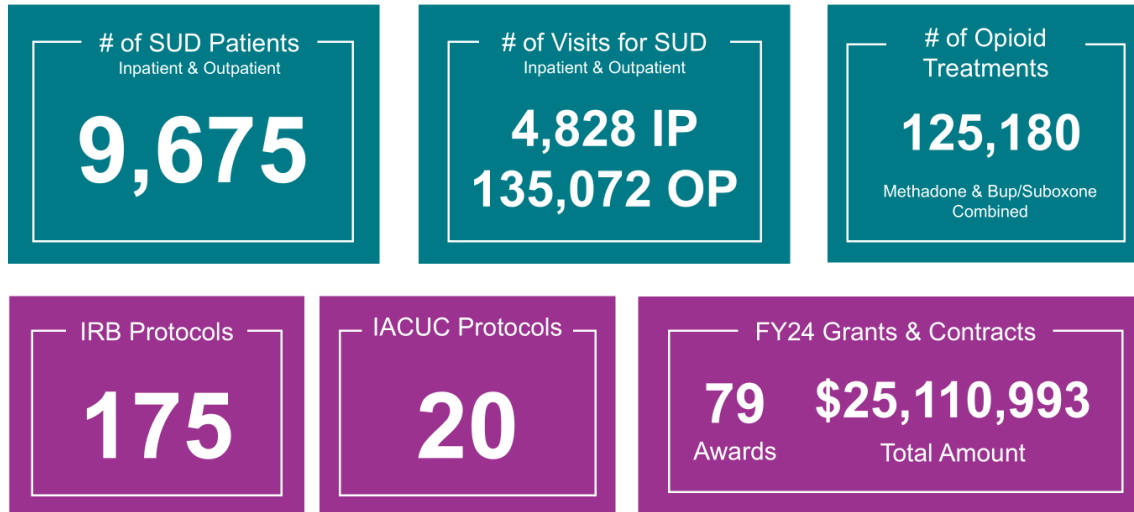
PTC-Gene-25-1447525





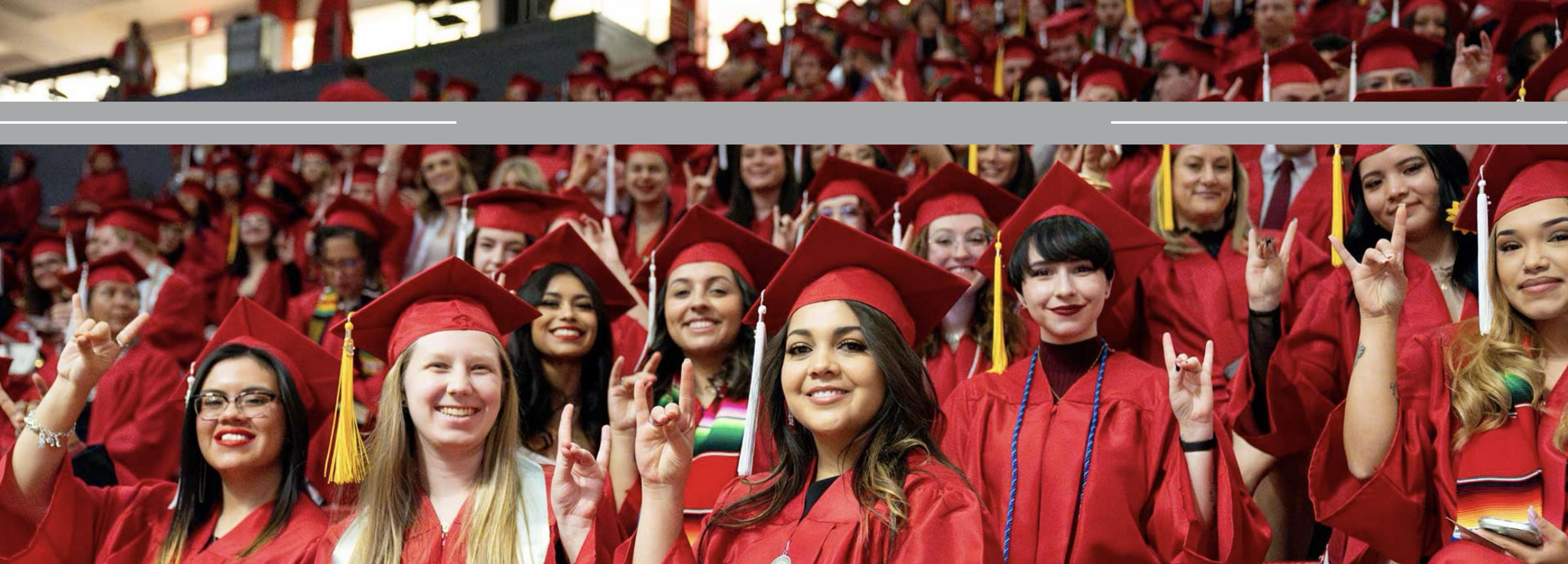
# Substance Use Disorder Treatment and Prevention

## SUD Statistics



## OneUNM: Priority Initiative

- 2026 RPSP: \$4.25M
- Expand clinic services
- Increase access to virtual addition services
- Add to the clinical workforce



# THANK YOU

We extend gratitude to the Legislative Health & Human Services committee members for your time and consideration. Your support helps us transform ideas into reality across New Mexico, whether focused on academics, health care, or research. Together, we can continue to foster innovation, education, and progress. **This is the Land of Achievement**®.

*Thank you for believing in our vision and investing in the future of our state.*

