

100% Family Center: Strengthening Families and Communities

Kasandra Gandara, MSW

Founder, Doña Ana County Resilience Leaders

Esther Devall, Ph.D

NMSU Professor Emeritus



Anna, Age Eight Institute

- Funded by legislature in 2019 to reduce childhood trauma and social adversity.
- Supports coalitions in 18 counties across New Mexico.
- With 100% county coalitions, works to ensure access to 5 surviving and 5 thriving services.
- Data-driven approach.

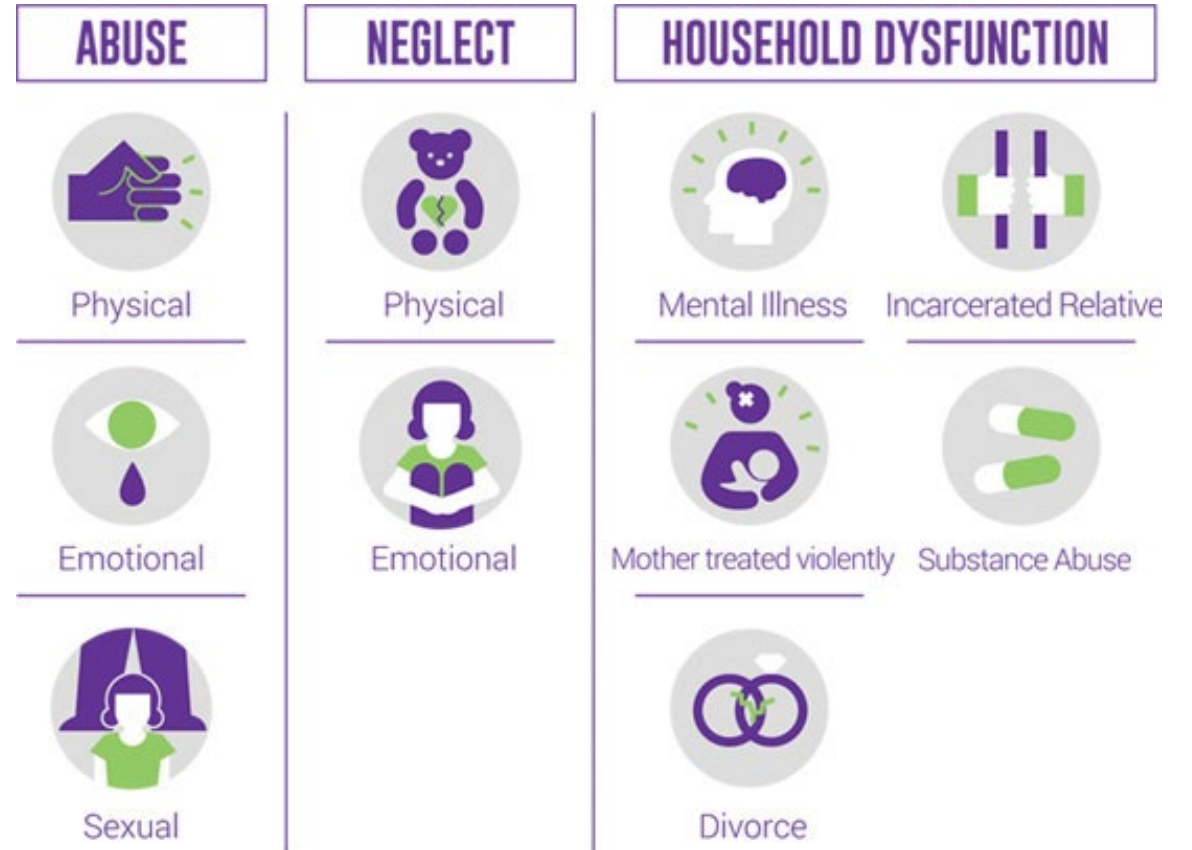


Doña Ana County Resilience Leaders

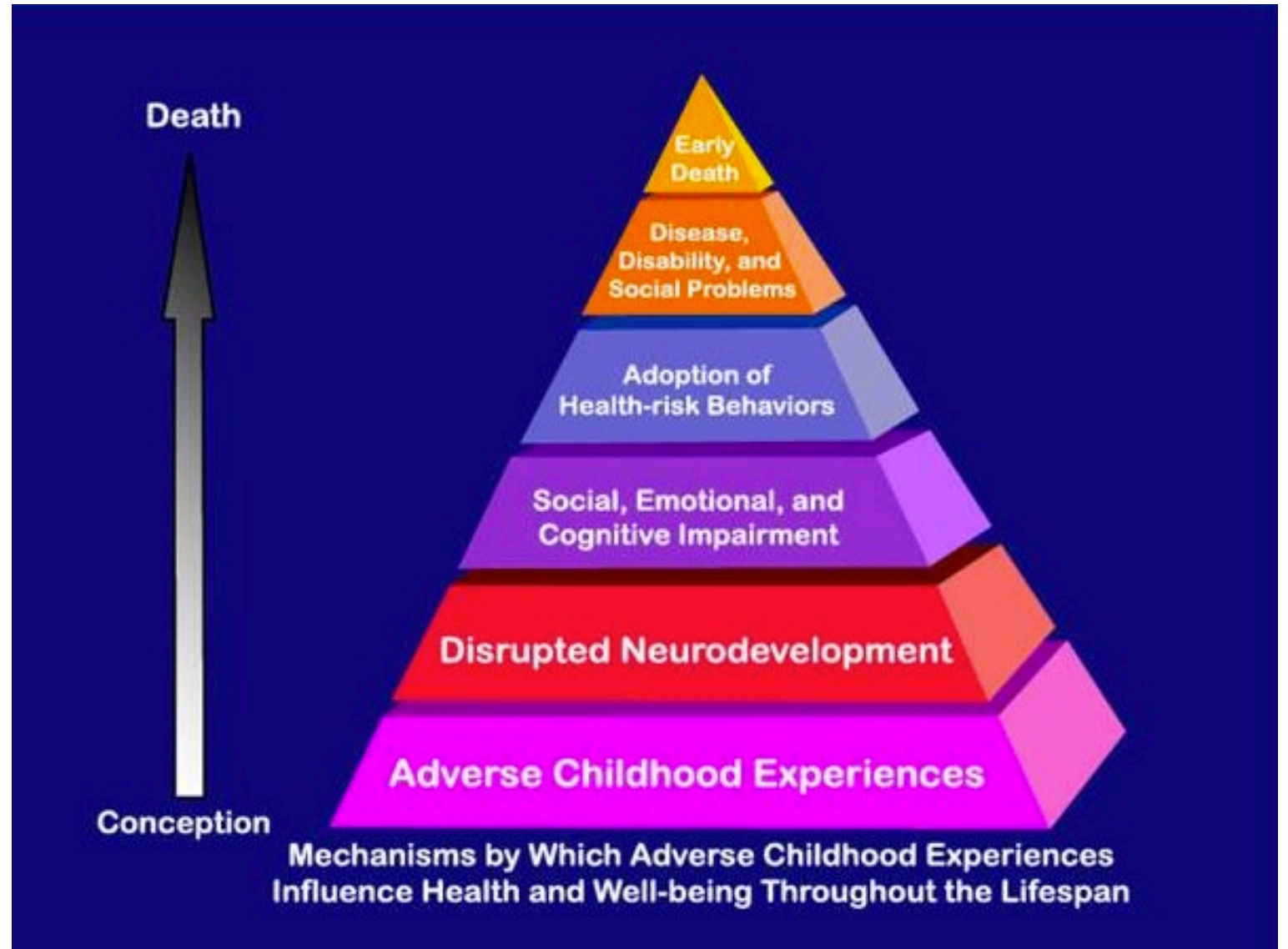
- Formed in 2017.
- Conducted countywide survey in 2019 and 2024.
- Held summits in 2019, 2022, and 2024.
- 100% murals completed in 2022 and 2025.
- Opened 100% Family Center in 2025.
- Maintains online directory of services across 10 sectors.
- Works in alignment with NMSU's *Anna, Age Eight Institute*.



Adverse Childhood Experiences



Impact of ACEs: Decreased Health and Well-Being



100% Family Center: Opened March, 2025

- Hub-and-spoke model based at Roadrunner Food Bank and utilizing existing schools and community programs.
- 4 full-time staff.
- Current funding from state legislature through Las Cruces Public Schools and Hilton Foundation.
- Grant proposals submitted to:
 - Robert Wood Johnson Foundation
 - Ripple Foundation
 - McCune Foundation



Goals of 100% Family Center

Link

Link individuals and families to 10 vital services.

Educate

Educate and support anyone raising children from birth through age 5.

Build

Build community capacity by training the future workforce, removing barriers to vital services, and educating the community about ACEs.

Linking Families to Vital Services for Surviving and Thriving

1

Work with partner agencies to provide vital services on site; organize resource fairs and outreach events.

2

Provide trained navigators who help families access services and remove barriers to access.

3

Maintain online directory and track referrals to other programs.

Navigation Services

Served 109 families with 147 children.

Most frequently requested services:

Housing (27%)

Parenting support
(25%)

Behavioral health
(12%)

Job training (8%)

Food (6%)

Many of these services will be impacted by federal budget cuts.

Educating and Supporting Parents/Caregivers

1

Parent educators trained in *Abriendos Puertas/Opening Doors* and *Circle of Security*.

2

Classes geared for those raising young children offered in distressed neighborhoods.

3

Families linked to navigation services and provided ongoing support after classes end.

Abriendo Puertas/Opening Doors

Completed 3 class series:

Booker T. Washington Elementary	Angels with Broken Wings	Alameda Elementary
---------------------------------	--------------------------	--------------------



Served 20 parents and 34 children.



Impact:

90% completion rate	100% of parents reported increased confidence	100% of parents requested additional services and support
---------------------	---	---

Building Community Capacity

1

Train college interns in trauma and child maltreatment.

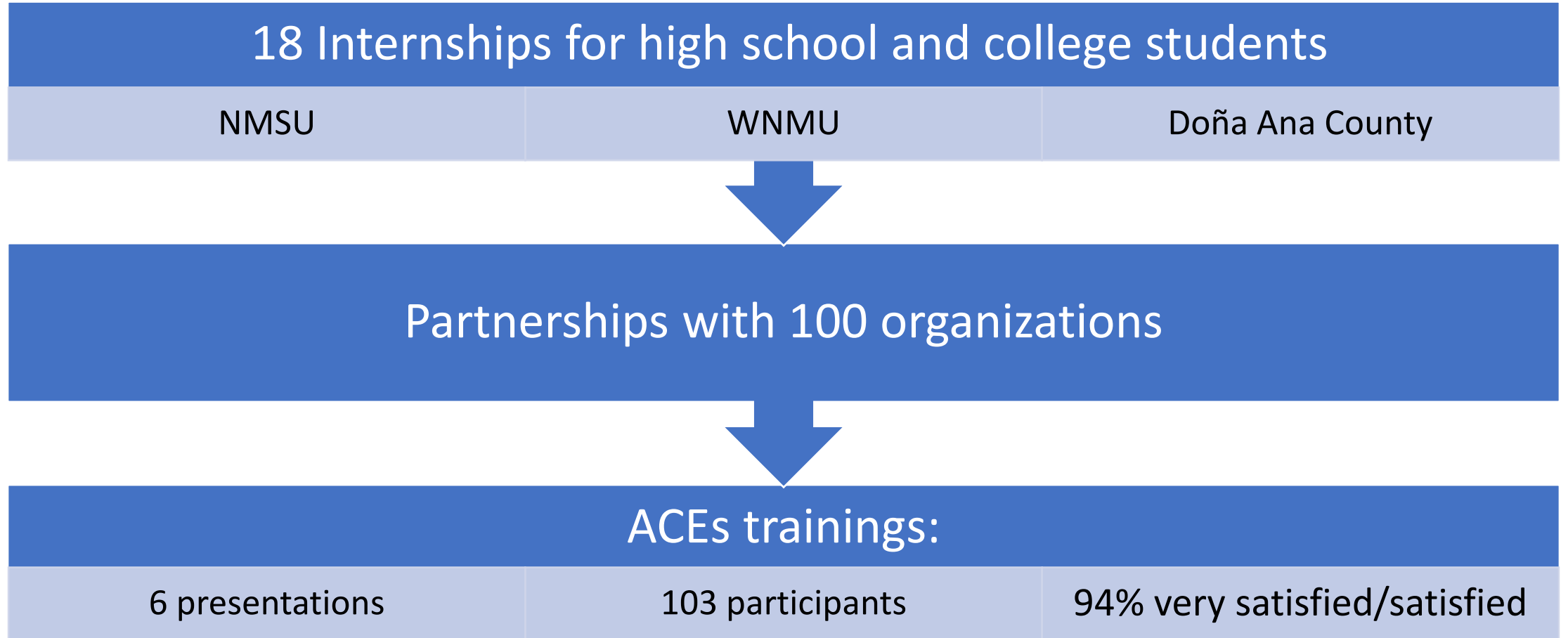
2

Collaborate with other organizations to remove barriers and increase access to vital services.

3

Offer training in Adverse Childhood Experiences (ACEs) to community members.

Community Capacity



Impact of Cuts to Federal Programs and Changes in Federal Policies



Increased fear of seeking services due to immigration status.



Increased need for rental assistance.



Increased need for utility assistance.




Decreased number of housing vouchers.



Increased food insecurity.

Greater Stress on Families



Increased pressure on safety-net and family support programs:

- Community health centers
- Children's advocacy centers
- Domestic violence programs



Results:

- Increased family violence.
- Increased family dysfunction.
- Higher levels of Adverse Childhood Experiences (ACEs) and trauma.
- Higher costs for special education, health care, and criminal justice system in the future.