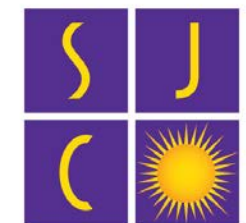




# The School of Energy

Today and Tomorrow



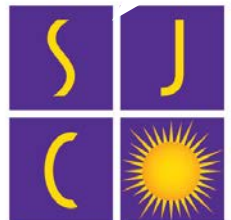
**SAN JUAN COLLEGE**  
Success Matters

# School of Energy Overview

History of:

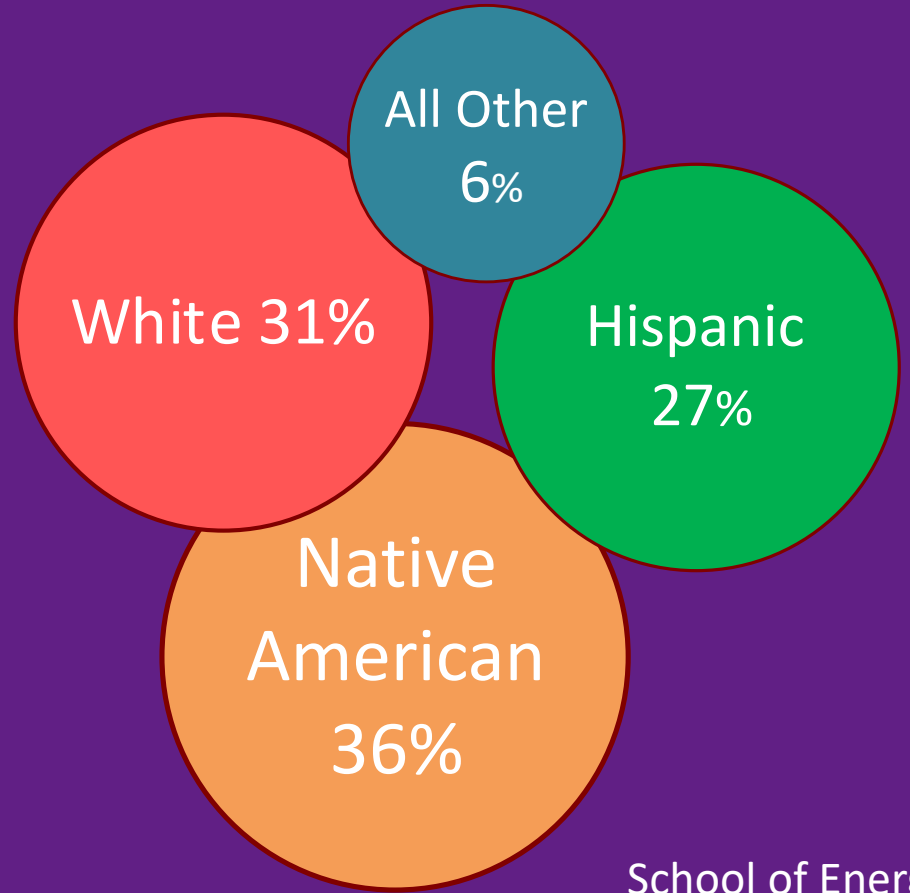
- Partnership with industry
- Program design collaborating with industry
- Just-in-time flexibility
- Degree/Certificate/Non-Credit

Credential

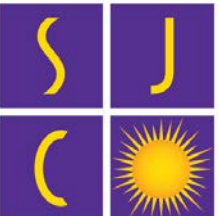


**SAN JUAN COLLEGE**  
Success Matters

# Student Demographics



School of Energy  
2020 - 2021



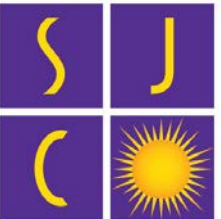
**SAN JUAN COLLEGE**  
Success Matters

# Academic

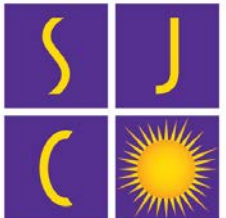
Degree or Certificate Programs:

## Programs

- Advanced Petroleum Production
- Natural Gas Compression
- Instrumentation Controls Electrical Technology
- Industrial Process Operations
- Industrial Maintenance Mechanic
- Occupational & Commercial Construction Safety
- Tribal Energy Management Studies



**SAN JUAN COLLEGE**  
Success Matters



**SAN JUAN COLLEGE**  
Success Matters



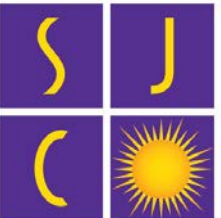
# Center of

# Excellence

The Center of Excellence for Renewable Energy and Sustainability initially identified four areas of possibility.

They are:

- 1) Alternative Fuels Vehicle Technology
- 2) Lithium Ion Batteries
- 3) Education of Issues Surrounding Water Security and Sustainability
- 4) Hydrogen and its Role in Providing Clean and Affordable Energy

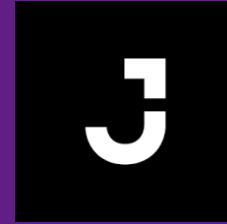


**SAN JUAN COLLEGE**  
Success Matters

# Sampling



BigNavajo  
energy



Chevron



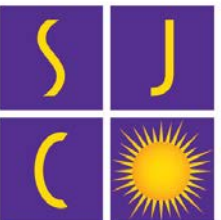
aps®



ConocoPhillips

TESLA

BayoTech  
ON-SITE HYDROGEN



SAN JUAN COLLEGE  
Success Matters



# ENERGY, MANUFACTURING & TRANSPORTATION

## Associate of Applied Science, Instrumentation, Controls & Electrical Technology

The Instrumentation, Controls & Electrical Technology program provides students with a hands-on work environment that covers electrical instruments, electrical systems, pneumatic systems and computer-based process controls. Students learn how to install, maintain and troubleshoot automatically controlled processes.

### SALARY INFORMATION



Graduate Average

\$80,013



### OCCUPATIONAL OUTLOOK

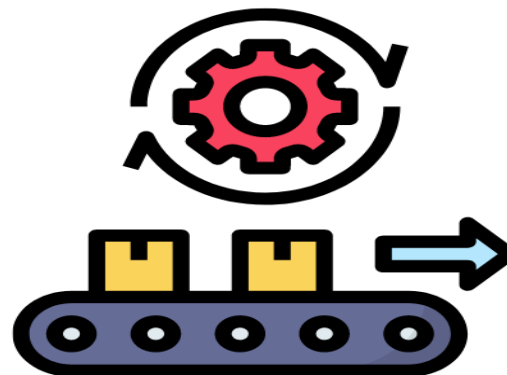
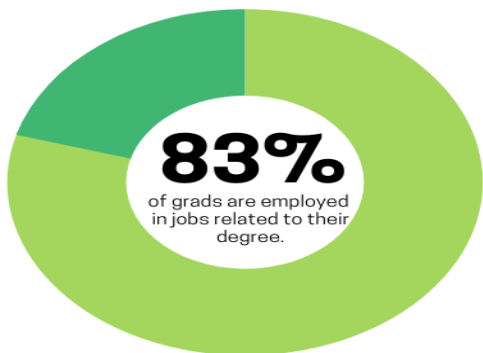
# 3% Growth

expected nationwide  
2020-2030



Information via the Bureau of Labor Statistics.

### DEGREE RELATED JOBS



# 84%

of graduates **Strongly Agreed** or **Agreed** that this degree prepared them well for their career.

### EMPLOYERS



- A Rhodes family company since 1970 -



### WHAT OUR GRADUATES ARE SAYING...

*"This degree helped broaden my horizons and helped me get better work experiences. I was able to be promoted in my current position."*

Instrumentation, Controls & Electrical Technology Graduate

Graduate information was collected from FA21-SU22 graduates.





# ENERGY, MANUFACTURING & TRANSPORTATION

## Associate of Applied Science, Industrial Process Operator

The Industrial Process Operator program is designed to prepare students for entry level positions as plant operators, operations technicians, multi-skilled operators of power generation, natural gas processing, refineries, mining, semiconductor, beverage, petrochemical and pharmaceutical processes.

### SALARY INFORMATION



**Graduate Average**  
**\$100,384**



**National Average**  
**\$58,635**

### OCCUPATIONAL OUTLOOK

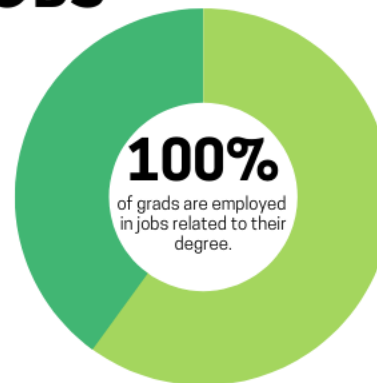
**8% Growth**

expected in  
New Mexico  
2020-2030



Information via the  
Bureau of Labor Statistics.

### DEGREE RELATED JOBS



**100%**

of graduates **Strongly Agreed** that this degree prepared them well for their career.



### EMPLOYERS



### INTERNSHIPS



City of Bloomfield Waste  
Water Treatment Plant

**100%**

of graduates completed this degree in  
order to gain training for employment.



**SKILL LEVEL**

### WHAT OUR GRADUATES ARE SAYING...

*"All the instructors were awesome! They went above and beyond to help me understand the subject and course material."*

Industrial Process Operator Graduate

Graduate information was collected from FA21-SU22 graduates.



# ENERGY, MANUFACTURING & TRANSPORTATION

## Certificate, Commercial Driver's License

The Commercial Driver's License program provides the training and skills necessary for individuals to pass the three-part CDL exam. Students learn in the classroom, on a simulator, in a truck on a the training course and in a truck on the highway.

### SALARY INFORMATION



Graduate Average

\$63,016

National Average  
\$42,813

### OCCUPATIONAL OUTLOOK

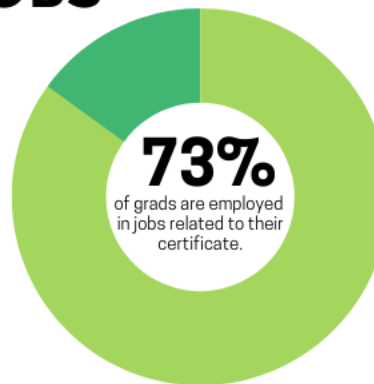
7% Growth

expected nationwide  
2021-2031



Information via the  
Bureau of Labor Statistics.

### DEGREE RELATED JOBS



# 90%

of graduates **Strongly Agreed** or **Agreed** that this degree prepared them well for their career.



### EMPLOYERS



M&R TRUCKING, INC.



### WHAT OUR GRADUATES ARE SAYING...

"I completed the CDL program and was offered employment the week after finishing. The staff is wonderful and I have plans to get another degree."

Commercial Driver's License Graduate

Graduate information was collected from FA21-SU22 graduates.



# ENERGY, MANUFACTURING & TRANSPORTATION

## Associate of Applied Science, Tribal Energy Management

The Tribal Energy Management associate degree focuses on Tribal Energy Management curriculum along with general education courses, online energy core curriculum courses and student-selected energy concentration courses.

### SALARY INFORMATION



Graduate Average

\$63,077

National Average  
\$46,540

### OCCUPATIONAL OUTLOOK

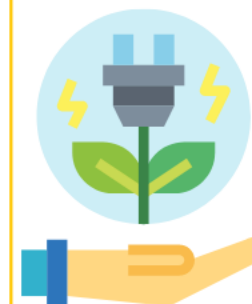
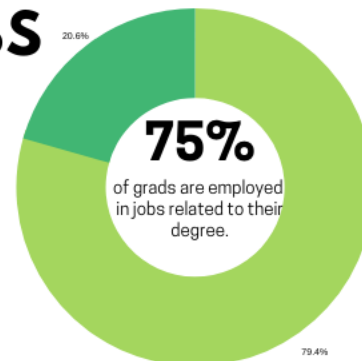
9% Growth

expected nationwide  
2019-2029



Information via the Bureau of Labor Statistics.

### DEGREE RELATED JOBS



75%

of graduates **Strongly Agreed** or **Agreed** that this degree prepared them well for their career.

### EMPLOYERS



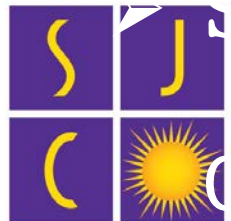
### WHAT OUR GRADUATES ARE SAYING...

"The Tribal Energy Management program at San Juan College is a top notch one of a kind program. I was very satisfied with the curriculum."

Tribal Energy Management Graduate

# Non-Credit

- IADC Well Completions Offerings
  - Onsite, Travel, Online
- Industrial Safety
- Tribal Energy Management Studies

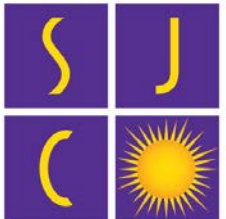


**SAN JUAN COLLEGE**  
Success Matters



# Addressing the Future

- Broadly based skills
- Forms and sources of energy
- Employer collaborations
- Stackable credentials



**SAN JUAN COLLEGE**  
Success Matters



# Questions

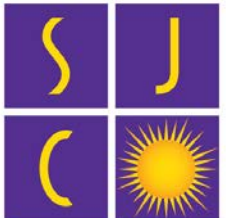
Alicia Corbell

Dean

School of Energy

(505) 566-4034

[corbella@sanjuancollege.edu](mailto:corbella@sanjuancollege.edu)



SAN JUAN COLLEGE

Success Matters