

# UNM Project ECHO & College of Education and Human Sciences

---

PROJECT ECHO & THE COLLEGE OF EDUCATION AND HUMAN  
SCIENCES: SUPPORTING NEW MEXICO EDUCATORS

# REQUEST

---

- A combined proposal from the University of New Mexico's Project ECHO and College of Education and Human Sciences: One university committed to building and sustaining educators across their career
- FY25 Research and Public Service Project (RPSP) Request that is a part of the main University of New Mexico request
  - 5.6 Million in recurring funds for a joint initiative to support teachers - between Project ECHO serving teachers and University of New Mexico College of Education and Human Sciences
  - RPSP Title: Enhancing and evaluating primary and secondary education—a major social determinant of health and a key driver of economic development in New Mexico:  
Improving Student Achievement with a Literacy Focus

# Founding Goals of Project ECHO

Develop capacity to safely and effectively treat Hepatitis-C (HCV) in all areas of New Mexico and to monitor outcomes.

Develop a model to treat complex diseases in rural locations and developing countries.

# The ECHO Model



**Use technology to leverage scarce resources**



**Apply case-based learning to master complexity**



**Share best practices to reduce disparities**



**Evaluate and monitor outcomes**



ECHO Whale



PCA Espanola



Baton Rouge



Pecos Valley MC



DOH Las Cruces



SBRT-First Choice South Va



Memorial HDX7000



LAS VEGAS ECFH



### Clustering of Poor Prognostic Factors in Heavy Patients

Weight, kg (lb)	< 75.0 (1,650)	≥ 75.0 (1,651) <sup>a</sup>
Male, n (%)	100 (100.0)	107 (100.0) <sup>b</sup>
Race, n (%)	71 (71.0)	78 (72.9) <sup>b</sup>
Age, years <sup>c</sup>	45.4 ± 8.4	45.8 ± 8.6 <sup>b</sup>
BMI, kg/m <sup>2</sup>	31.2 ± 5.7	32.0 ± 6.0 <sup>b</sup>
Diabetes, n (%)	141 (141.0)	153 (142.1) <sup>b</sup>
Long-term alcohol use <sup>d</sup>	5 (5.0 ± 0.1) <sup>e</sup>	6 (5.6 ± 0.1) <sup>e</sup>
HEV-ITL, n (%)	102 (102.0)	108 (100.0) <sup>b</sup>
HEV, n (%)	100 (100)	105 (100.0) <sup>b</sup>
Resected, n (%)	100 (100.0)	105 (100.0) <sup>b</sup>

Abbreviations: BMI, body mass index; HEV, hepatitis E virus; HEV-ITL, hepatitis E virus immunotransferase-like; n, number of patients; %, percentage; kg, kilogram; lb, pound; m<sup>2</sup>, square meter; years, years. <sup>a</sup>Weight was significantly higher in the ≥75.0 kg group (P < .001). <sup>b</sup>Demographic characteristics were not significantly different between the two groups. <sup>c</sup>Values are mean ± SD. <sup>d</sup>Values are number of patients ± percentage. <sup>e</sup>Values are mean ± SD.

Clustering of Poor Prognostic Factors in Heavy Patients

Weight, kg (lb)	< 75.0 (1,650)	≥ 75.0 (1,651) <sup>a</sup>
Male, n (%)	100 (100.0)	107 (100.0) <sup>b</sup>
Race, n (%)	71 (71.0)	78 (72.9) <sup>b</sup>
Age, years <sup>c</sup>	45.4 ± 8.4	45.8 ± 8.6 <sup>b</sup>
BMI, kg/m <sup>2</sup>	31.2 ± 5.7	32.0 ± 6.0 <sup>b</sup>
Diabetes, n (%)	141 (141.0)	153 (142.1) <sup>b</sup>
Long-term alcohol use <sup>d</sup>	5 (5.0 ± 0.1) <sup>e</sup>	6 (5.6 ± 0.1) <sup>e</sup>
HEV-ITL, n (%)	102 (102.0)	108 (100.0) <sup>b</sup>
HEV, n (%)	100 (100)	105 (100.0) <sup>b</sup>
Resected, n (%)	100 (100.0)	105 (100.0) <sup>b</sup>

Arora S., Kalishman S., Thornton K., et al. *Hepatol.* 2010;52(3):1124-33.

# Legislative Funded New Mexico Project ECHO Health Programs

Adverse Childhood Experience ECHO Program	Adverse Childhood Experience ECHO Program: Putting Faces to the ACES	Alcohol Use and Mental Health ECHO Program	Bone Health ECHO Program	Cancer Survivorship ECHO Program	Care for the Older Patient ECHO Program	Dermatology ECHO Program
Endocrinology ECHO Program	General Pediatrics ECHO Program	HIV ECHO Program	Improving Perinatal Health ECHO Program	Supporting Children and Youth in Mental Health ECHO Program	Palliative Care Champions ECHO Program	Miners' Wellness ECHO Program
Neurology ECHO Program 02/24	Palliative Care ECHO Program	Violence Prevention ECHO Program	Reproductive Health ECHO Program	Diabetes Prevention Specialization for CHWs ECHO Program (Salud es Riqueza)	Rheumatology ECHO Program	Safe Care NM ECHO Program
School-Based Health Center ECHO Program	New Mexico Viral Hepatitis ECHO Program	Opioid Crisis and Pain ECHO Program 12/23	CHW/CHR Specialization in Maternal Health ECHO Program 02/24	Tumor Boards ECHO Program 12/24	Substance Use Disorder in Maternal Health ECHO Program 01/24	Street Medicine ECHO Program
		Climate Change and Human Health ECHO Program	Gender Affirming Care ECHO Program	Colorectal Cancer Screening ECHO Program 04/24		

# Cross-Cutting Legislative Funded ECHO Programs and Initiatives

The following series crosscut several programs to best support participant and community-identified learning objectives.

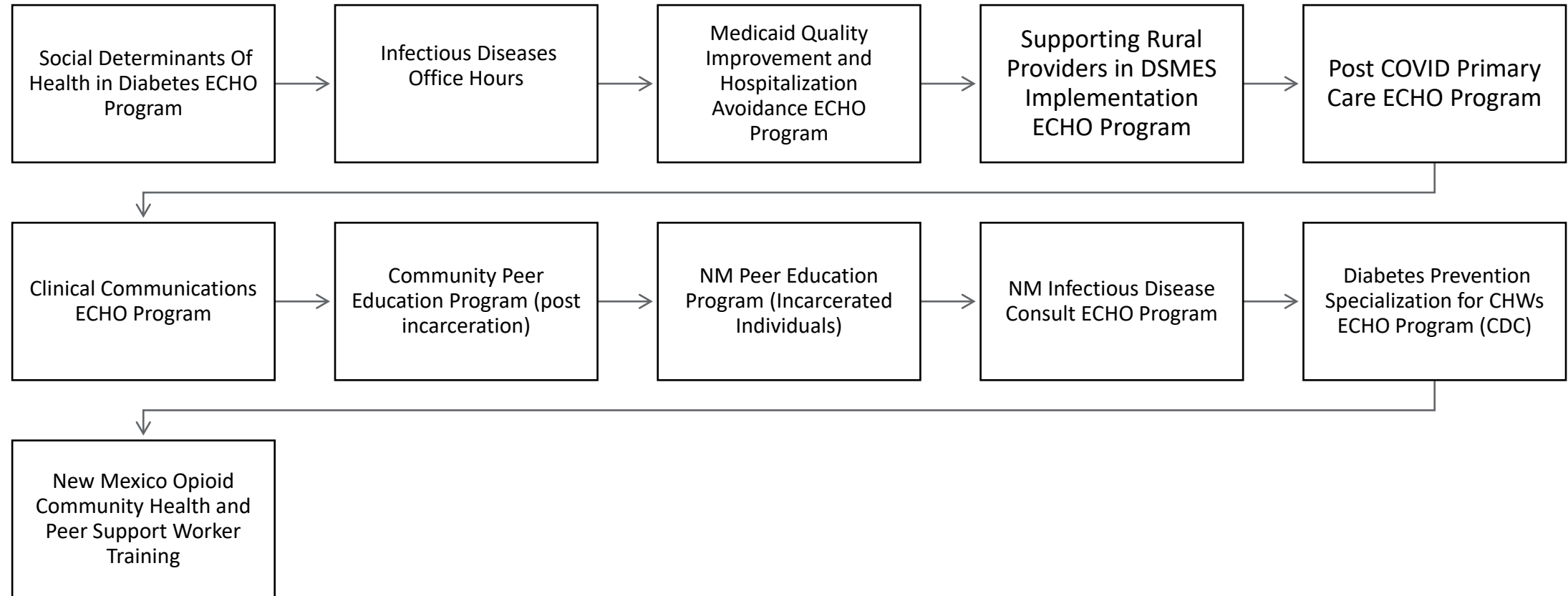
Pediatric Brain  
Injury Series ECHO  
Program

Fentanyl Series  
ECHO Program

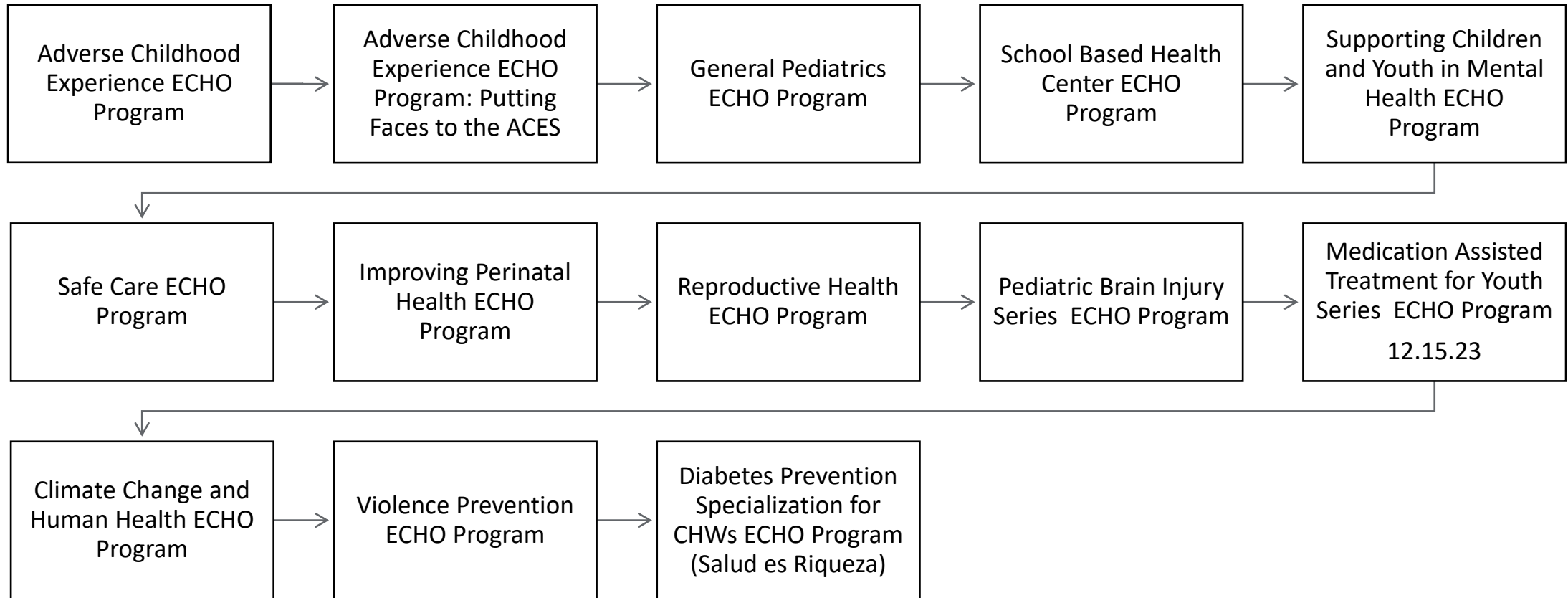
Medication-  
Assisted Treatment  
for Youth Series  
ECHO Program



# New Mexico Health Programs Supported Through Grants and Contracts.

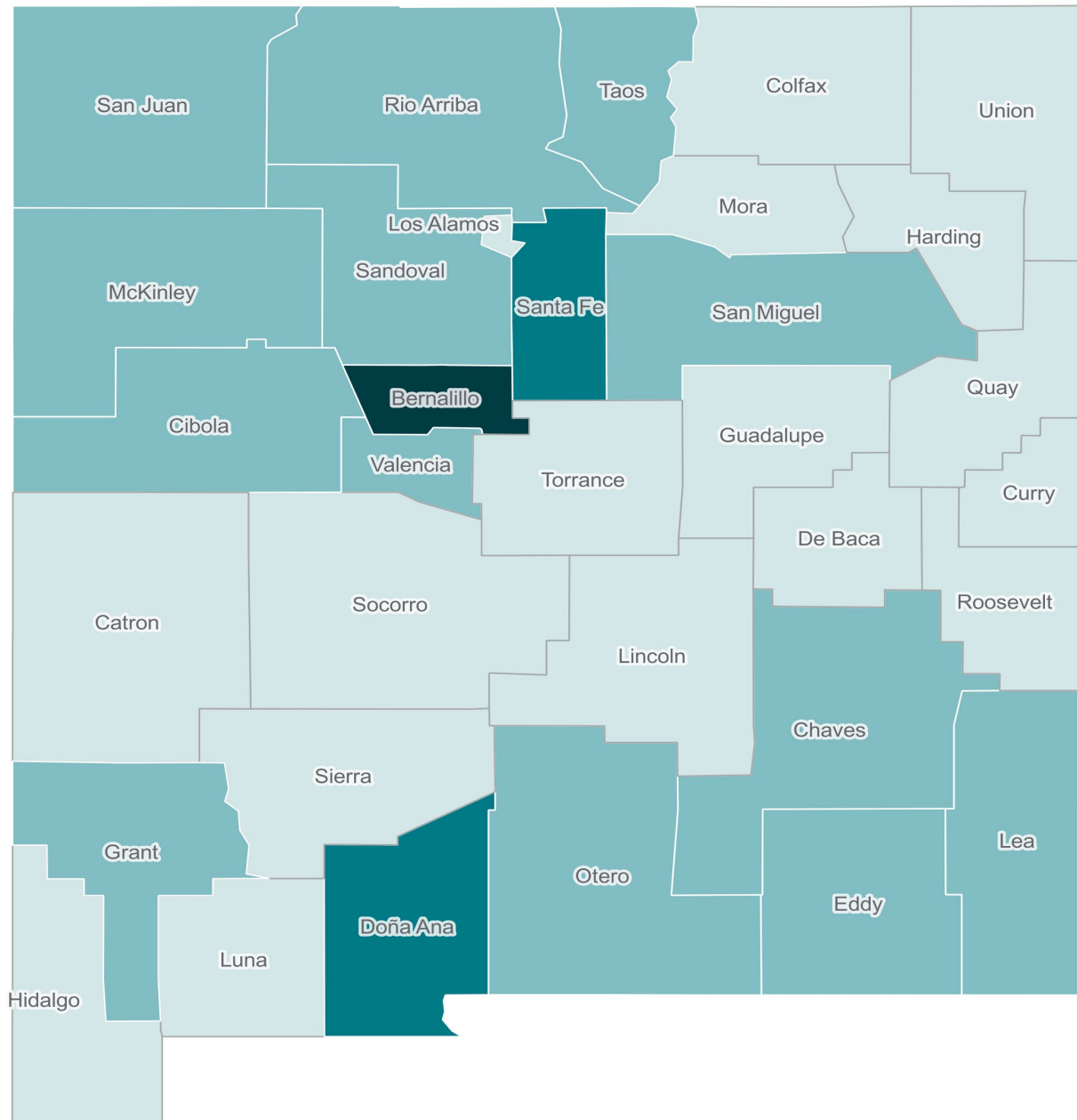


# Health Programs that Support New Mexico's Children



## Map of Attendance by first line professionals in ECHO Sessions Across the State

As if 7/16/2023 there have been **181,191** cumulative attendances by almost **19,251** individuals.



NM Attendance by County

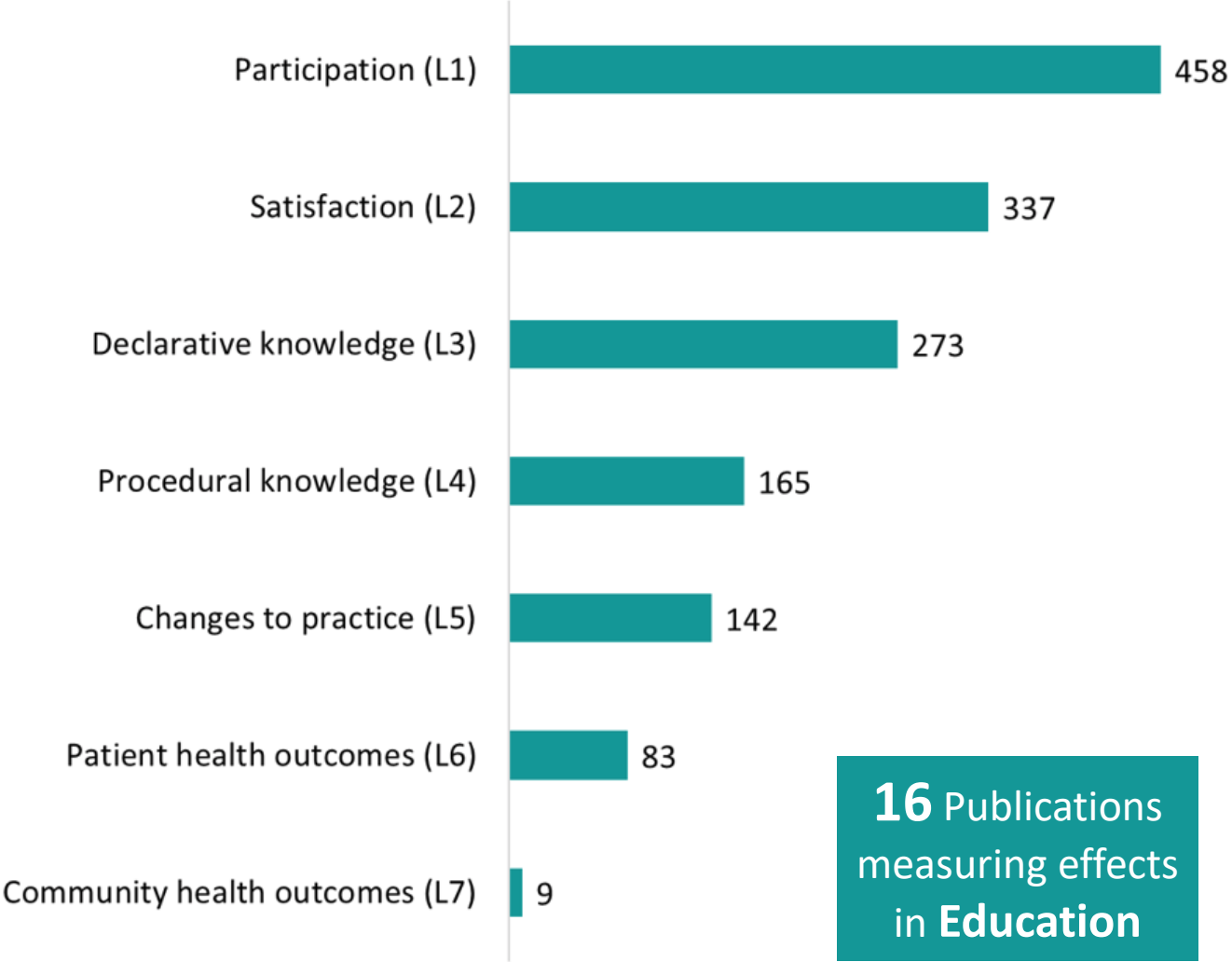
- 14 - 1000
- 1001 - 4174
- 4175 - 15411
- 47906

# ECHO Publications by Outcome Levels



**563 Publications**

ECHO peer-reviewed publications by Moore's Level (N= 563)



**16 Publications** measuring effects in **Education**

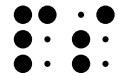
# Benefits of the ECHO Model in Healthcare



Quality and safety



Rapid learning and best-practice dissemination



Reduce variations in care



Access for rural and underserved patients, reduced disparities



Workforce training and force multiplier



Improving professional satisfaction/retention



Supporting the medical home model



Cost-effective care - avoid excessive testing and travel



*Prevent cost of untreated disease (e.g., liver transplant or dialysis)*



Integration of public health into treatment paradigm

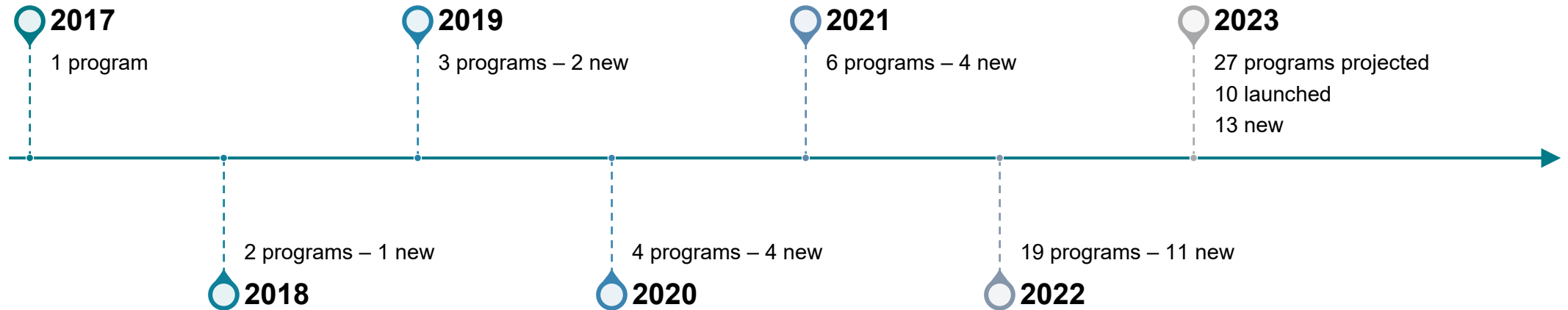
## Democratizing Implementation of Best Practice

# Fundamentally, the ECHO Model is a tool to help upskill frontline workers

---

- Ongoing mentorship and guided practice
- Discussion driven by real needs and actual cases and problems of those working on the frontline
- Provides a supportive social network
- Efficient and effective way to get implementation of best practices to frontline workers
- Creating a safe space for dialog, learning, and development

# ECHO for Education NM: From Pilot to Proof of Concept to Building Capacity



6 years

28 Topics

44 Programs

550 Sessions

11,564 Hours of Learning

3,384 Unique Participants

All 33 NM Counties

999 Participating Orgs

89 NM School Districts

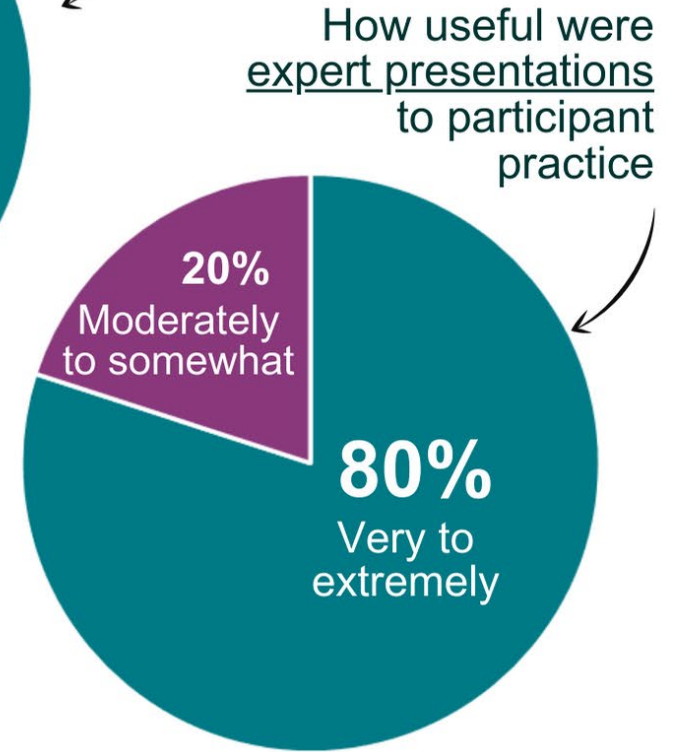
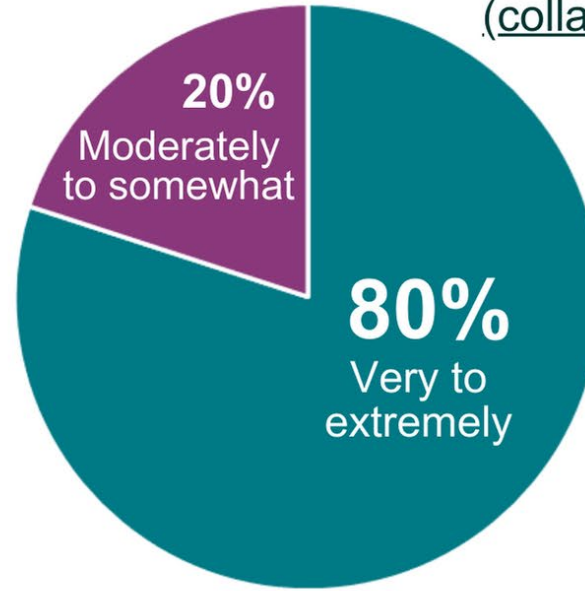
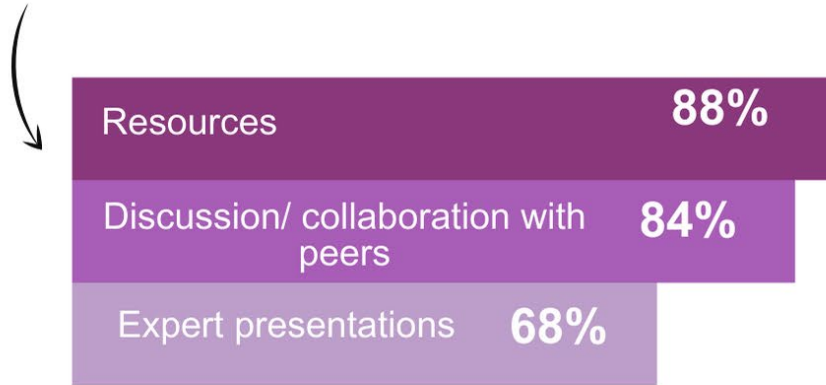
# New Mexico Project ECHO Education Programs

Adobe Think Tank ECHO Program	Community Schools NM ECHO Program (CS)	CoRequisite Model for Higher Education NM ECHO program	Developmental Specialists NM ECHO Program (Leadership)	Developmental Specialist Community of Practice	Early Childhood Statewide Inclusion Supports NM ECHO Program
Early Childhood STEM NM ECHO Program	Early Numeracy for Elementary ECHO Program	Educator Resiliency through Social Emotional Learning	Elementary Math NM ECHO Program	FACULTY ECHO Program	Family Engagement in Early Literacy NM ECHO Program
Integrating STEM NM ECHO Program	Social Emotional Early Development Consultation Support	Leadership Engagement and Development in Child Care NM ECHO Program	Middle School OpenSciEd NM ECHO Program	Multilingual Early Childhood Certificate Pathway (Coursework)	Multilingual Early Childhood Certificate Pathway (Equity)
Multilingual Early Childhood Certificate Pathway (Sustainability)	Reflective Practice in Early Care and Education NM ECHO Program	Science K-8 NM ECHO Program	Southwest College and Career Counseling ECHO Program	STEM through Math NM ECHO Program	Strengthening Families and Communities NM ECHO Program
	Structured Literacy for the Classroom Kinder NM ECHO Program	Structured Literacy for the Classroom 1st Grade NM ECHO Program	Structured Literacy for the Classroom 2nd Grade NM ECHO Program		



# Participant Evaluation Survey

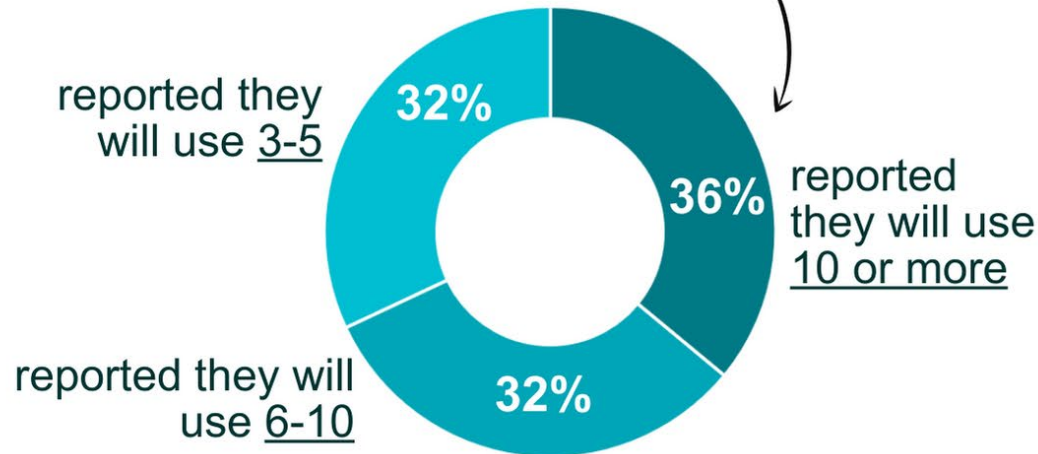
## What participants found to be the most beneficial aspect of the program



## How many strategies and approaches participants plan to use

**100%**

Reported implementing strategies and approaches learned in the program





# Fall 2023 Structured Literacy Implementation Program

80 teachers  
grades K-2

"The importance of assessment to drive my teaching is my biggest takeaway."

"My 2nd grade team struggles to create intervention groups. We stare at iStation results but we aren't convinced which pieces we should break kids into to strengthen their reading skills. Today we learned exactly which report to pull up and how to use it to create meaningful intervention groups."

"Children need to be explicitly exposed to high level language in context AND they need to actually use that language in context in order for them to acquire the high level language."

# What our participant are saying...

“ This program gave me the excitement, changed my attitude towards my literacy block - new resources, new things to try out with students; a community to be able to talk to.”

~ Participant in Structured Literacy for the Classroom ECHO Program

“I feel that these sessions have provided very valuable ideas and resources that would be impactful in my school. I am a principal at a K-8 charter school that really stresses social emotional foundations to all our learning. Some of the resources I have been able to share and put into play right away.” ~ Participant in Educator Resilience through Social and Emotional Learning ECHO Program

“I really enjoy the sharing in the small groups. I get motivated to try something tomorrow.”

~ Participant in Elementary Math ECHO Program

“Thank you! I just love collaborating and sharing ideas. We all talked about lack of materials being a challenge, and you provided ideas (and resources) to help alleviate the problem. Very helpful – thank you” ~ Participant in STEM through Literacy ECHO Program

“I teach in a rural community so joining the sessions provided me with the tools I need to reach outside of my community to the different resources our state provides”

~ Participant in Educator Resilience through Social and Emotional Learning ECHO Program



# Participant Level Interim Indicators for Impact on Students: Existing ECHO Education Programs

---



## Implementing Strategies

% of Surveyed Participants implementing strategies learned through Program

**100%** Literacy

**94%** STEM



## Knowledge Growth

% of Surveyed Participants reporting knowledge growth in program area averages all sessions

**100%** Literacy

**72%** STEM



## Net Promoter Scores

of Surveyed Participants (ranges from -100 to 100, > 50 considered very high)"

**84** Literacy

**85** STEM



**Recognizing the profound connection between education and health is vital for us to reduce health disparities**

---

**“If we really want to save lives in this country, prevent disease, reduce health care costs, we have to do something about education.”**

*Steve Woolf, Director, VCU Center on Society and Health.*

# Education is a key social determinant of health

---



College graduates can expect to live 5 years longer than individuals who have not finished high school



An additional 4 years of education reduces risks of diabetes, heart disease, obesity and smoking



The more years of education a mother has received, the more likely her infant is to survive and thrive



Education has generational effects – the likelihood of a child completing school is linked to their parents' educational attainment

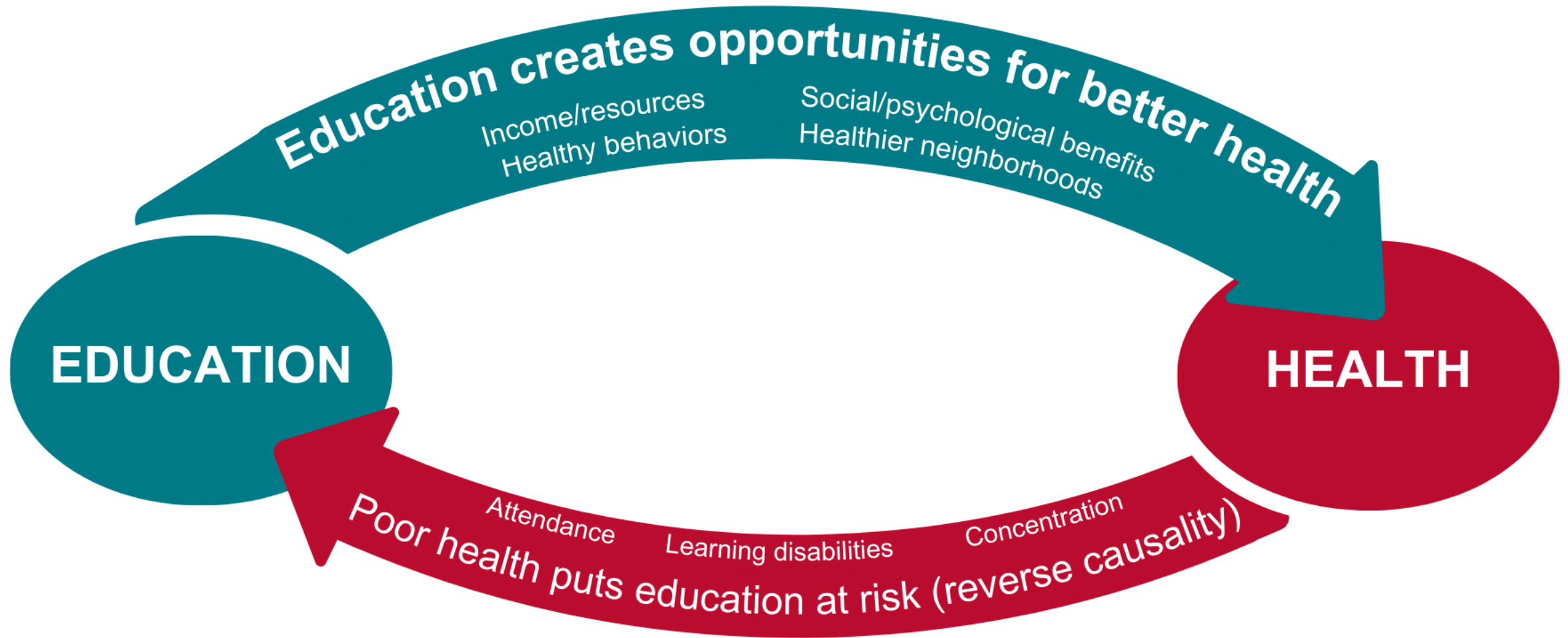


The lifetime earnings of someone with a graduate degree are more than 4 times that of a high school graduate



Those with higher earnings live in communities with more educational and health resources

# Health and Education Intertwined







# Enhancing and evaluating primary and secondary education—a major social determinant of health and a key driver of economic development in New Mexico: Improving Student Achievement with a Literacy Focus

---

FY25 RESEARCH AND PUBLIC SERVICE REQUEST

# Problem Statement

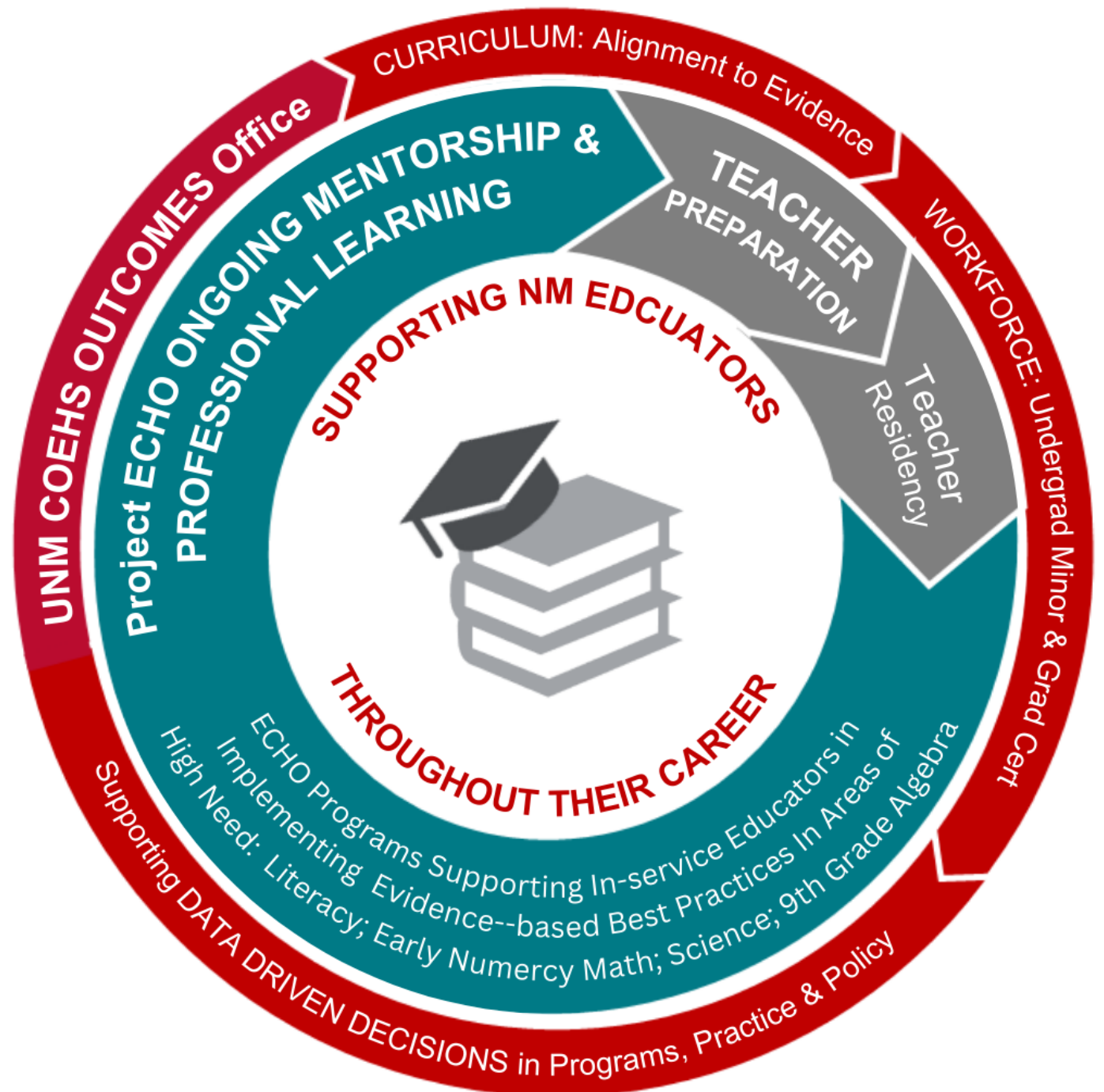
---

38% of children are at or above proficient in reading at 3<sup>rd</sup> grade  
(NMPED 2023)

19% of children are at or above proficient in math at 4<sup>th</sup> grade  
(NAEP 2022)

# UNM College of Education and Human Sciences & Project ECHO

Building a system of career long support for educators in New Mexico





# DATA DRIVEN DECISION MAKING to increase equity: COEHS OUTCOMES Office

Primary activity of the OUTCOMES Office is to provide important and timely information for community members, educational leaders, university professors and policymakers regarding what is needed to reduce barriers and improve equity in New Mexico classrooms in multiple other ways.

Key data areas:

- 1) improve the curriculum and educational practices offered at UNM's College of Education and Human Sciences to ensure they are informed by best educational practice and are research-based,
- 2) inform the State of New Mexico to support educational policy development, such as shaping future revisions to educational standards and/or practices in Santa Fe as well as at other educational entities across the state, and
- 3) improve ECHO Education programs and ensure that they are truly meeting the needs of learners in New Mexico.

Workforce  
Capacity  
Building:  
COEHS  
OUTCOMES  
Office

This proposal includes training the next generation of education researchers in the methods, analysis, and ethics of applied educational research.

We will establish a new Undergraduate Minor and Graduate Certificate in applied educational research including data science

Our goal is to increasing the workforce in New Mexico available to do this important work.

# ECHO Education Program Focus: Teacher effectiveness

The single most important influence on student achievement

A more effective teacher can advance student learning by 1.5 years in a school year\*

New Mexico educators are committed to their students' success

New Mexico kids can learn as well as kids anywhere



# ECHO Education Program Focus Areas for increasing teacher effectiveness

---

---

## **Structured Literacy Implementation support for the classroom**

A series of K-5 grade-level programs developed in collaboration with the Literacy and Humanities Bureau at NMPED and national literacy experts to support the classroom implementation of evidence-based science of reading practices.

---

## **Numeric Literacy**

A series of programs for PK-4 – 6<sup>th</sup> grade teachers in developing their student's conceptual understanding of numbers and math. Evidence shows that developing conceptual understanding of math

---

## **Algebra 1**

Algebra 1 is a gateway course for High School graduation, and ensuring effective instruction in this key course is important for increasing graduation rates in New Mexico

---

## **Science**

The Next Generation Science Standards Elementary Science NM ECHO Program will train teachers in evidence-based content and pedagogical preparation for effectively implementing the Next Generation Science Standards,

---

How do we support educators in implementing evidence-based best practices?

Effective interventions alone do not produce meaningful and sustainable results – we must support implementation

*There are three levels of support that can be given when implementing new knowledge:*





# ECHO Model: Make it Happen

## Traditional Training

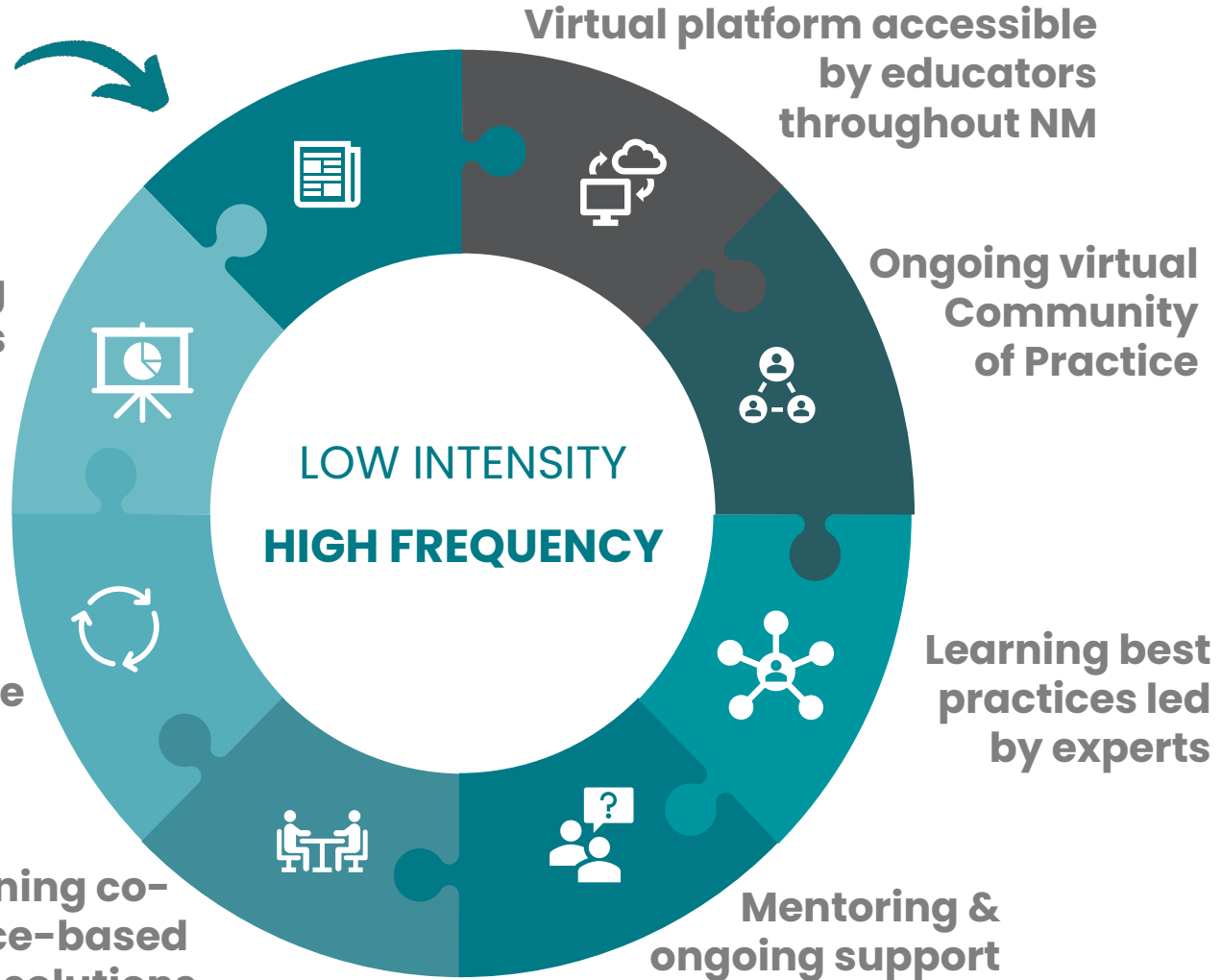


**Evidence Based Best Practices**

Measuring effectiveness

Feedback loops for guided iterative practice

Collaborative learning co-producing evidence-based locally responsive solutions



# What are our anticipated outcomes?

---

# Increase 3<sup>rd</sup> grade reading proficiency by 10 points: from 38% to 48%

Run 34 ECHO programs in key areas with a focus on literacy

Recruit 60 local and national experts to support high-quality ECHO PL programs for NM Teachers

- Recruit experts from UNM COEHS, NM Institutes of Higher Ed, NM School districts, and other state and national experts.

Impacting ~22,260 students per year

- Over 110,000 student years of learning impacted over 5 years
- Educators participating in ECHO implement best practices with fidelity to increase teacher effectiveness: current rate 94%

Increase alignment of curricula to research and evidence-based practices through the OUTCOMES Office

# Reduce Teacher Burnout by 10%

ECHO participants gain knowledge and self-efficacy through expert mentorship, collaborative learning & virtual communities of practice

Reduce burnout

Enhance the quantity and quality of teacher residency programs in collaboration with COEHS and PED



540 ECHO Professional Learning sessions annually



1320 Participating educators in ECHO programs annually

# Increase teacher retention by 10%

---

Access to effective mentorship through ECHO's trusted human network supporting teachers in implementing evidence-based best practices wherever they are.

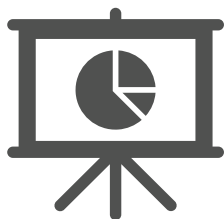
Increase resiliency of new teachers entering the workforce through research on programming such as Social Emotional Learning

# Increase Data-Driven Practices, Programs and Policies in our Education System



Establish a new state resource for educational research and evaluation OUTCOMES Office

Increase in evidence-based best practices implemented in schools and educational system



Support data-informed decision making in curriculum, future professional development and support policy decision making

# 10% increase in diversity and people trained for educational research

Establish undergraduate minor and graduate certificate in applied educational research and/or data science in COEHS



Support state workforce in educational research and policy development

# Contact Information

---

## **Sanjeev Arora, MD, MACP**

Distinguished Professor of Medicine (Gastroenterology/Hepatology)

Director of Project ECHO

Department of Medicine, University of New Mexico Health Sciences Center | [sanjeevarora@salud.unm.edu](mailto:sanjeevarora@salud.unm.edu)

## **Kristopher Goodrich, Ph.D.**

Dean of the College of Education and Human Sciences

Professor of Counselor Education University of New Mexico | [kgoodric@unm.edu](mailto:kgoodric@unm.edu) | 505.277.2231

## **Soraya Gollop, Ph.D.**

Director of Education Team, Project ECHO

University of New Mexico Health Sciences Center | [sgollop@salud.unm.edu](mailto:sgollop@salud.unm.edu) | 214.883.5347



# Theory of Change: Project ECHO & UNM COEHS

Increase student achievement in the key areas of reading, math and science, with a focus on literacy in New Mexico and improve state capacity for data driven decision making in education.

**GOAL**

Project ECHO will use the ECHO model to provide high-quality professional learning and mentorship equally accessible to all teachers in New Mexico ensuring that students in grades K-5, and 9th grade have access to teachers and instructors proficient in training core skills in math, science and literacy. COEHS will create a new state resource for educational research and evaluation, the Office of Outcome-Based Educational Evaluation (OUTCOMES) supporting curricular alignment in teacher prep and data driven decision making and program evaluation in NM.

**METHOD**

