



TOBACCO SETTLEMENT REVENUE OVERSIGHT COMMITTEE JULY 7TH 2025

UNM COMPREHENSIVE CANCER CENTER

YOLANDA SANCHEZ, PHD

DIRECTOR & CEO

MISSION

To reduce the cancer burden and overcome the cancer health disparities in New Mexico and the nation through:



- Ground-breaking transdisciplinary research inclusive of novel clinical trials
- Translation of discoveries to community, prevention and clinical interventions
- Impactful, respectful and culturally-appropriate bi-directional community engagement
- Education and training of a more diverse cancer workforce and future leadership
- Delivery of exceptional patient centered cancer care

UNMCCC Cancer Center History



UNM Cancer Research Facility



UNM Cancer Center Clinical Facility
(\$140M; State, Institutional, Philanthropic Funds)



NCI Comprehensive Cancer Center Designation



2nd Clinical Facility Expansion
(\$60 M; Radiation Oncology, Theranostics, GMP Laboratories: Isotopes, Immunotherapy)



NCI Comprehensive Cancer Center Designation Renewal



1998
NCI P20 CCSG Planning Grant

2000
Consortium Partnership Lovelace Biomedical /LRRRI
State Support \$10.5 M,
\$8.75 M Medical Trust Endowment



2003
NCI Cancer Center Designation
NCI P30 CCSG

2005
\$20 M in 3 Philanthropic Gifts for Faculty Endowments

2009
1st Clinical Facility Expansion (\$12.6M: Infusion, Surgery, BMT)



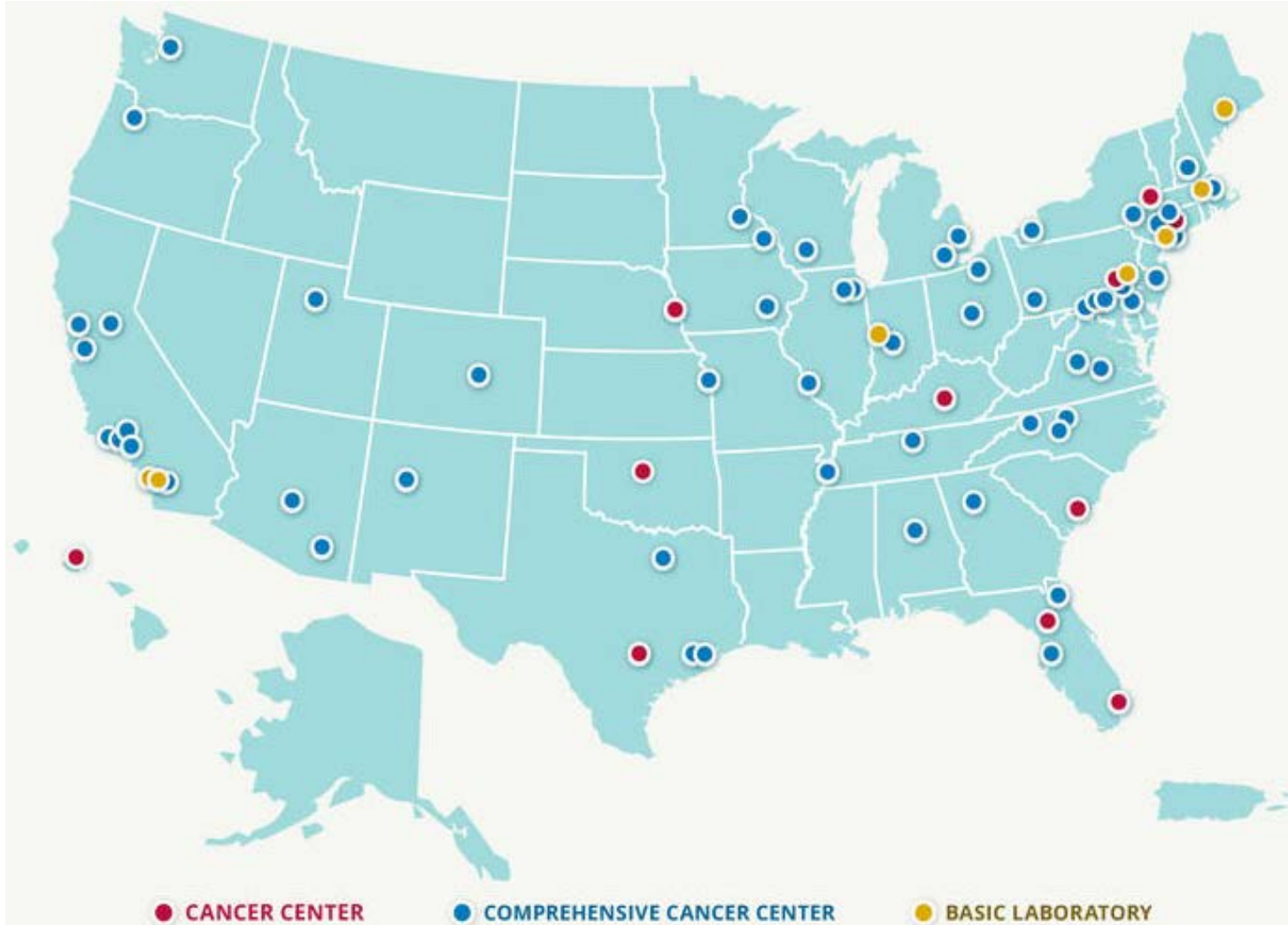
2010
Endowments: \$33.4M
New Gifts: \$15M
Reserves: \$22.9M
\$3M Recurring Increase in Annual State Support (\$9M Total)



2015
New CEO and Director

UNM Comprehensive Cancer Center

One of 57 NCI-designated Comprehensive Cancer Centers

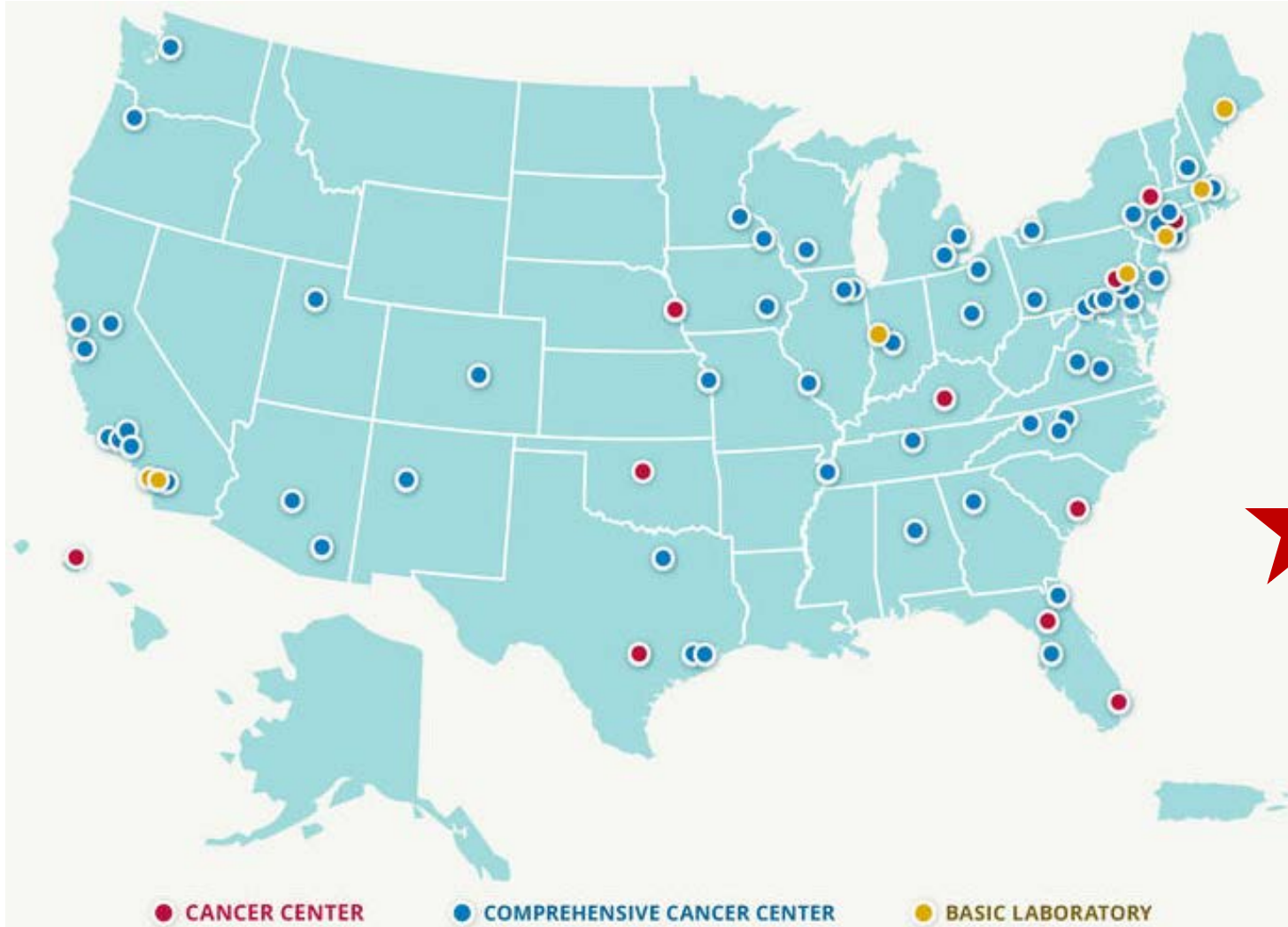


74 NCI Cancer Centers

- Top 3% of Cancer Centers in the Nation
- 36 States
- Core of NCI Extramural Research Mission: >85% Extramural Budget
- Discovery science engine and translation to clinical trials and interventions.
- Deeply engage communities and build community networks
- Train the nation's cancer workforce

UNM Comprehensive Cancer Center

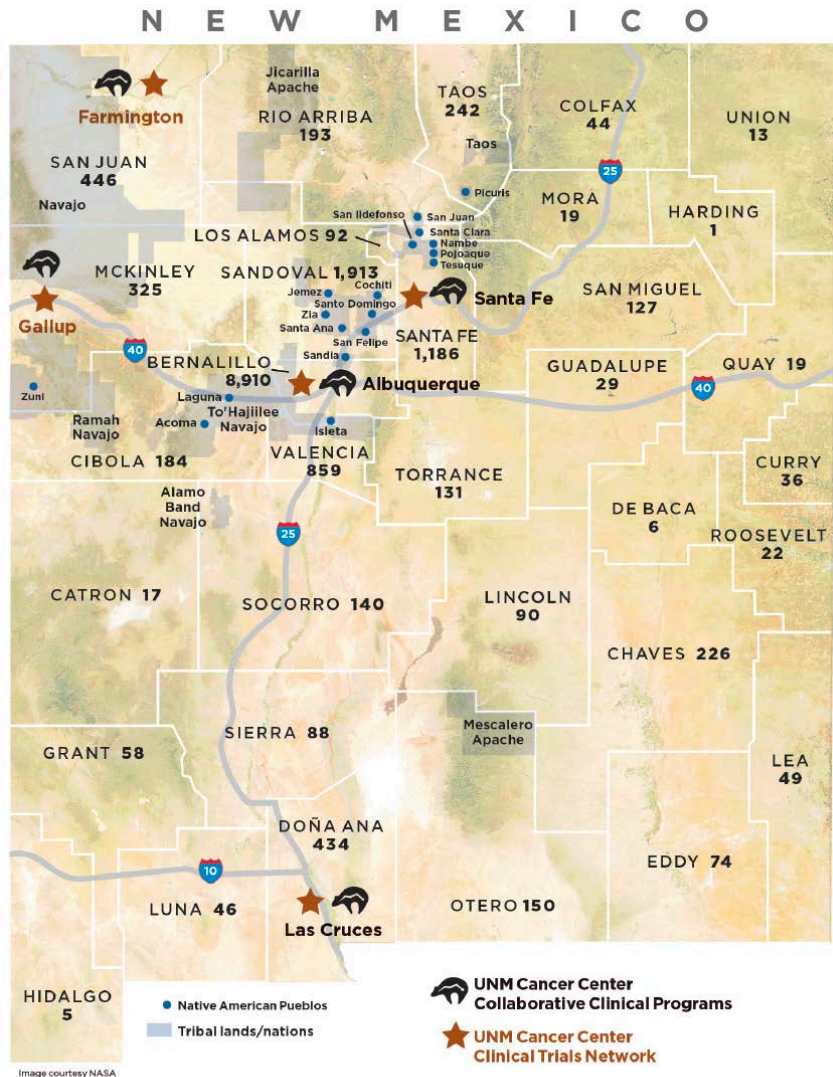
One of 57 NCI-designated Comprehensive Cancer Centers



74 NCI Cancer Centers

- Top 3% of Cancer Centers in the Nation
- 36 States
- Core of NCI Extramural Research Mission: >85% Extramural Budget
- Discovery science engine and translation to clinical trials and interventions. **Tobacco Settlement Funds: Genomic Research**
- Deeply engage communities and build community networks
- Train the nation's cancer workforce

UNM Comprehensive Cancer Center Differentiators



Patients Treated In Fiscal Year 2024	In State: 16,179	Out of State: 322	Total: 16,501
--------------------------------------	------------------	-------------------	---------------

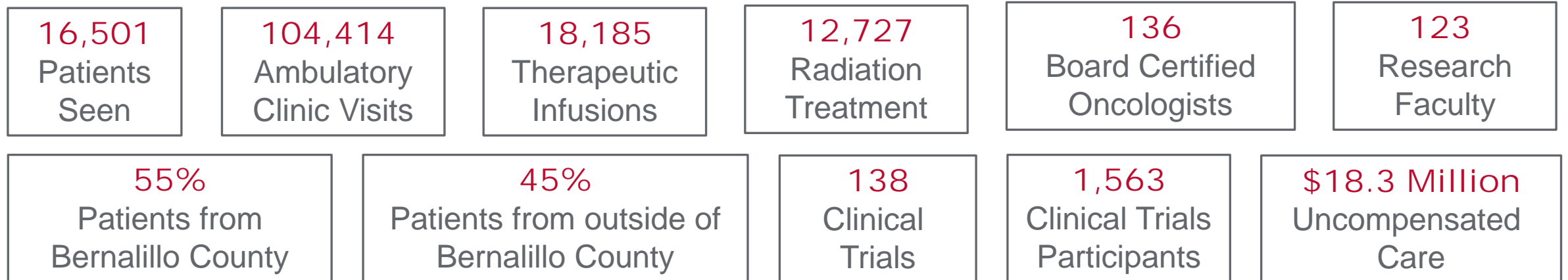
- UNMCCC serves a **unique catchment area** with multiethnic populations through respectful, bidirectional engagement and communication.
- The **New Mexico Cancer Research Alliance** provides a partnership with community-based health systems and oncology providers. The NMCRA, a 501(c)(3) collaborative network established by UNMCCC in 2003, is funded as a Minority/Underserved NCI Community Oncology Research Program (NCORP; 2UG1CA189856-06; PI Muller).
- Partner **Lovelace Biomedical Research Institute** with complementary lung cancer prevention, screening and treatment, as well as tobacco and e-cigarette research.
- **Project ECHO** a tele-mentoring platform developed at UNM and used world-wide is used by UNMCCC to improve cancer patient outcomes through education, training and care management.



What Makes the UNM Comprehensive Cancer Center Unique

- The Official Cancer Center of the state of New Mexico
- The only cancer center in New Mexico to hold the elite NCI Comprehensive Cancer Center designation, delivering cancer treatment not available elsewhere within a 500-mile radius.
- Conducts cutting-edge cancer research and translates discoveries to interventions
- Our patients receive state-of-the-art care all in one place: expert multi-disciplinary treatment planning; access to novel clinical trials; and personalized treatment.

UNM Cancer Center by the Numbers (2024)



Building for the Future

Expansion of Clinical Research and Treatment Space at the UNMCCC, 50,000 sq ft.

Space for state-of-the-art radiation oncology technologies and procedures,

including the only MRI-LINAC in NM

Expansion of Theranostics

Growth of the only Bone Marrow/Stem

Cell Transplantation accredited

program in NM

- 20 bed wing at UNMH for Medical Oncology and cell-based therapies

Expansion of clinical research and

workforce training programs

Groundbreaking December 14, 2023



Phase III Expansion



Phase III Expansion: Status – Segment 2

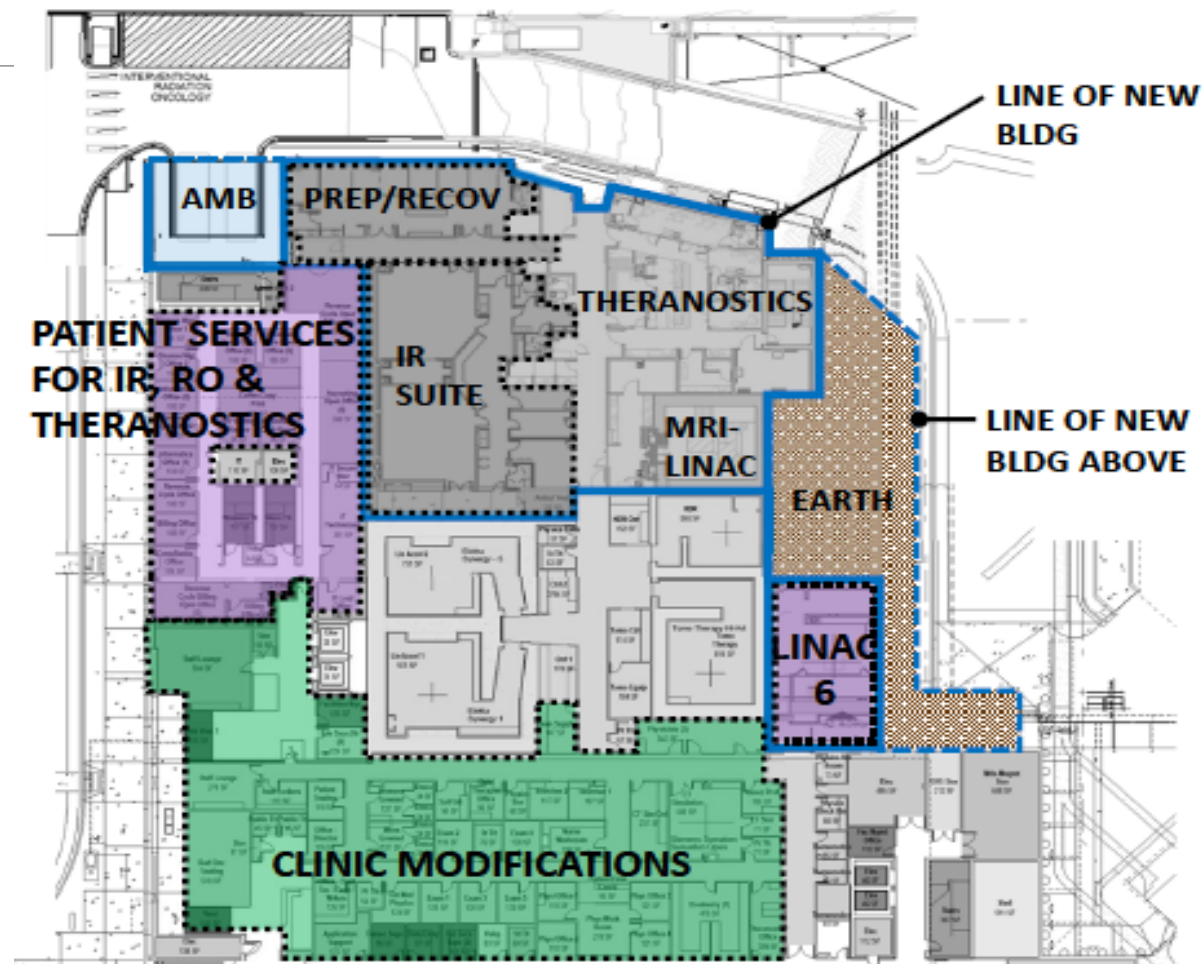
I. Segment 2

Construction % Completion: 81%

1. Budget: \$44.5M (\$34.1M Bonds/State Approp.; Matching - **\$9.4M UNMCC**, \$1M HSC)
2. Projected Cost to completion - \$43,294,022.88, savings transferred to Segment 3

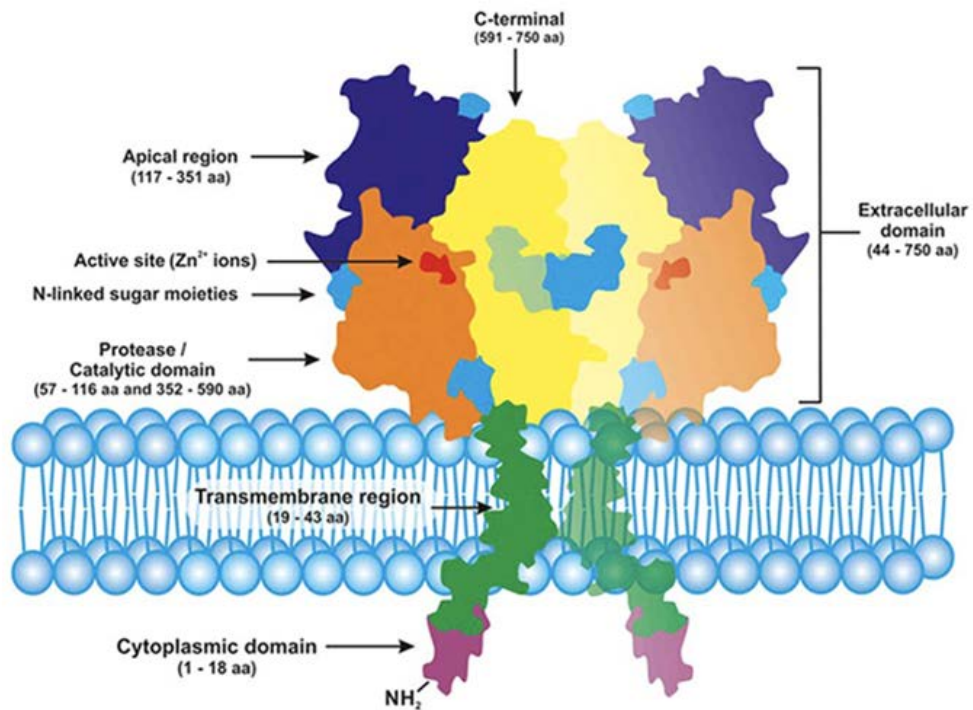
Segment 2 will provide:

1. **Radiation Oncology vault # 5 – MRI Linear Accelerator**
 - a. Installation in April, 2025, Commission ETA – November, 2025
 - b. Training and Scheduling – November – January, 2026
 - c. First patient treat – February 2026
2. **Theranostics Suite**
 - a. Fully shielded suite: 2 shielded suites (designated bathrooms), 3 infusion chairs
 - b. First Patient treat – January 2026
3. Radiation Oncology vault # 6 – Shelled. Future expansion
 4. Interventional Radiology space- Shelled. Future planning/programming
5. Floor 1 and Floor 2 Shelled Clinic admin and CC administration move from ground floor for future renovation of clinic waiting and clinic space(s) Floor 2: GMP Lab and clinical research expansion

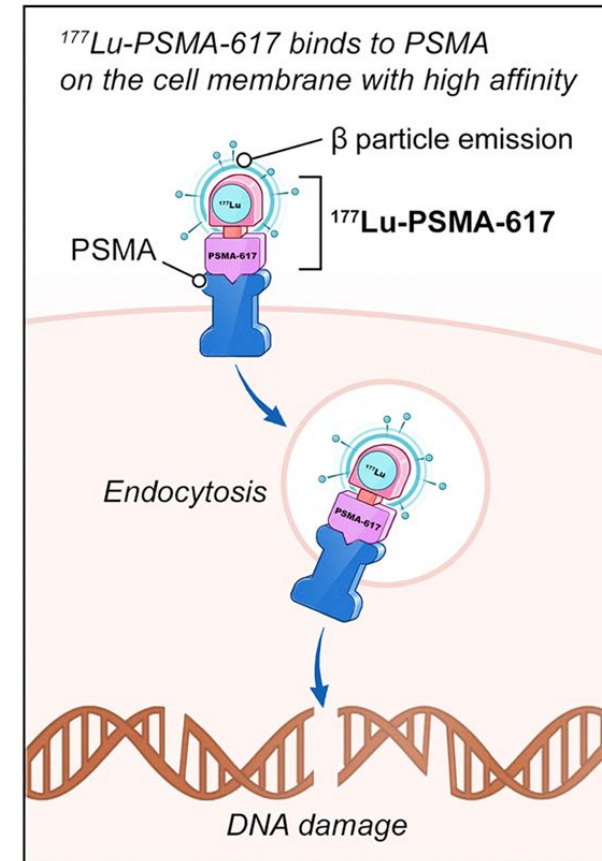


¹⁷⁷Lu-PSMA-617 targeted radioligand therapy

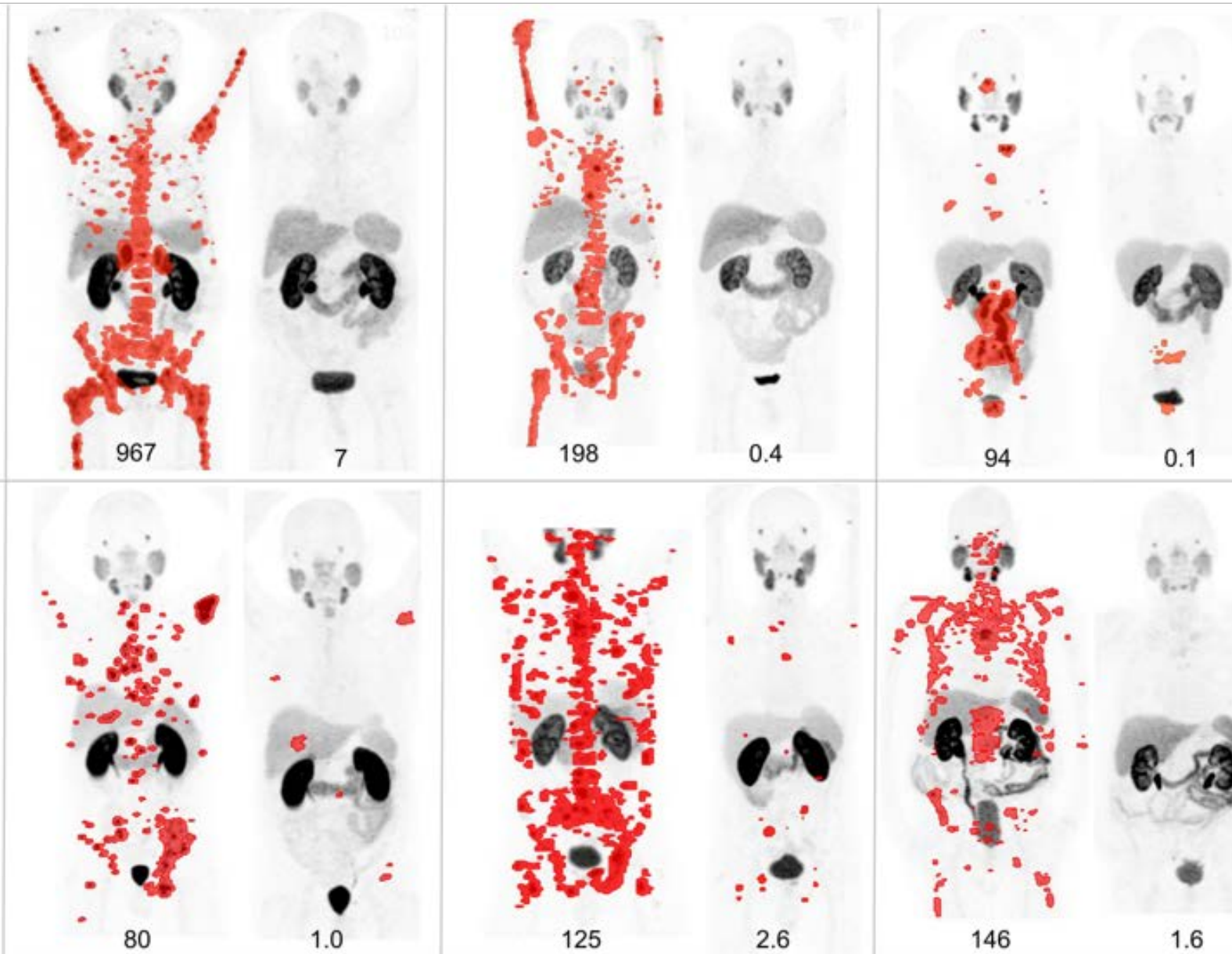
Prostate-Specific Membrane Antigen (PSMA)



O'Driscoll et al Br. J. Pharmacol. 2016, 173, 3041.



Morris et al. ASCO 2021



Theranostics: PSMA & Lutathera

Journal of Nuclear Medicine Image of the Year – 2018

Image of a clinical trial of Prostate Specific Mutation Antigen (PSMA): Before and After Treatment.

Intravenous infusion of radioactive pharmaceutical to treat chemotherapy-resistant metastatic prostate cancer (approx. 20% of all prostate cancer cases).

Building for the Future

Expanded Radiation Oncology Services with Advanced Image-Guided Radiation therapy and Stereotactic RadioSurgery (SRS) capabilities:

- One new Radiation Oncology vault, designed and constructed to house a state-of-the-art Magnetic Resonance Linear Accelerator (MR LINAC).
- Features the latest image-guided radiotherapy for real-time imaging of patient tumors while simultaneously undergoing active treatment.
- Technology supports future advancements with Artificial Intelligence (AI) and incorporation of machine learning algorithms to provide adaptive treatments that minimizes side effects while maximizing clinical efficacy.
- Only one of its type in New Mexico.



Building for the Future

The newly-installed Versa HD can be used to perform intensity modulated radiation therapy, stereotactic body radiation therapy and stereotactic radiosurgery for a wide variety of tumor types, a noninvasive procedure that delivers high dose radiation to a tumor but a much lower dose to surrounding tissues, thus killing tumor cells but sparing the nearby cells. The plan is to have three Versa HD machines by the end of 2026

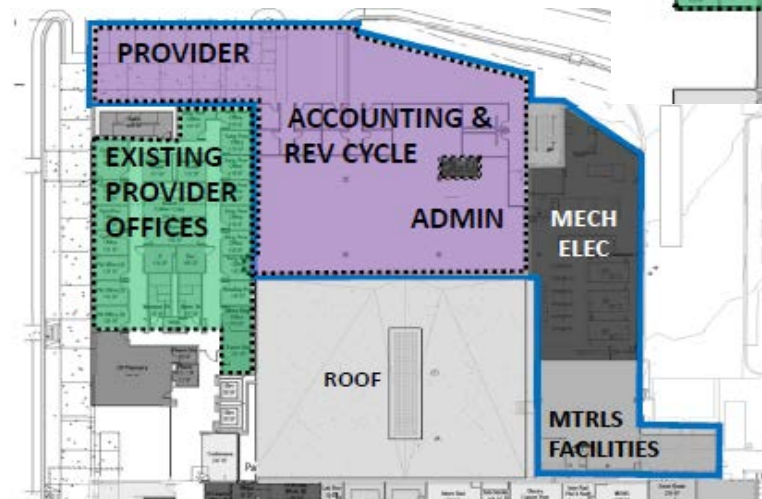


Phase III Expansion: Status – Segment 3

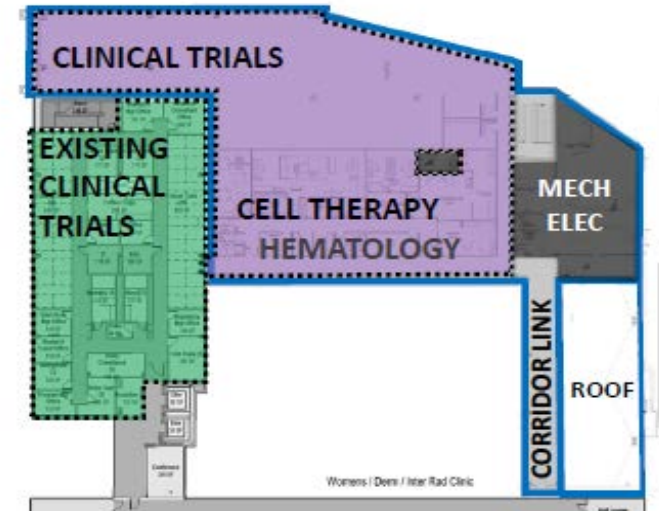
II. Segment 3

- A. Budget - \$16.6M (\$15M State Approp. / (\$1.6M **UNMCCC Match**); Current estimate of initial planned build out - \$18.4M. Project required value engineering to bring project within available budget.
- B. Programing and Planning completed March 31, 2025
- C. Schematic Design and Construction Documents development underway – ETA, November 2025
- D. Construction planned for spring 2026.
- E. Segment 3 will provide
 1. Finish out of Floors 1 and 2
 2. Floor 1: Clinical space expansion and CC administration relocation from Ground Floor. Ground Floor will be renovated in future to accommodate increased volume of expanded services (Theranostics, Rad Onc., IR)
 3. Floor 2: GMP Lab expansion supporting BMT program; Clinical Research Office expansion

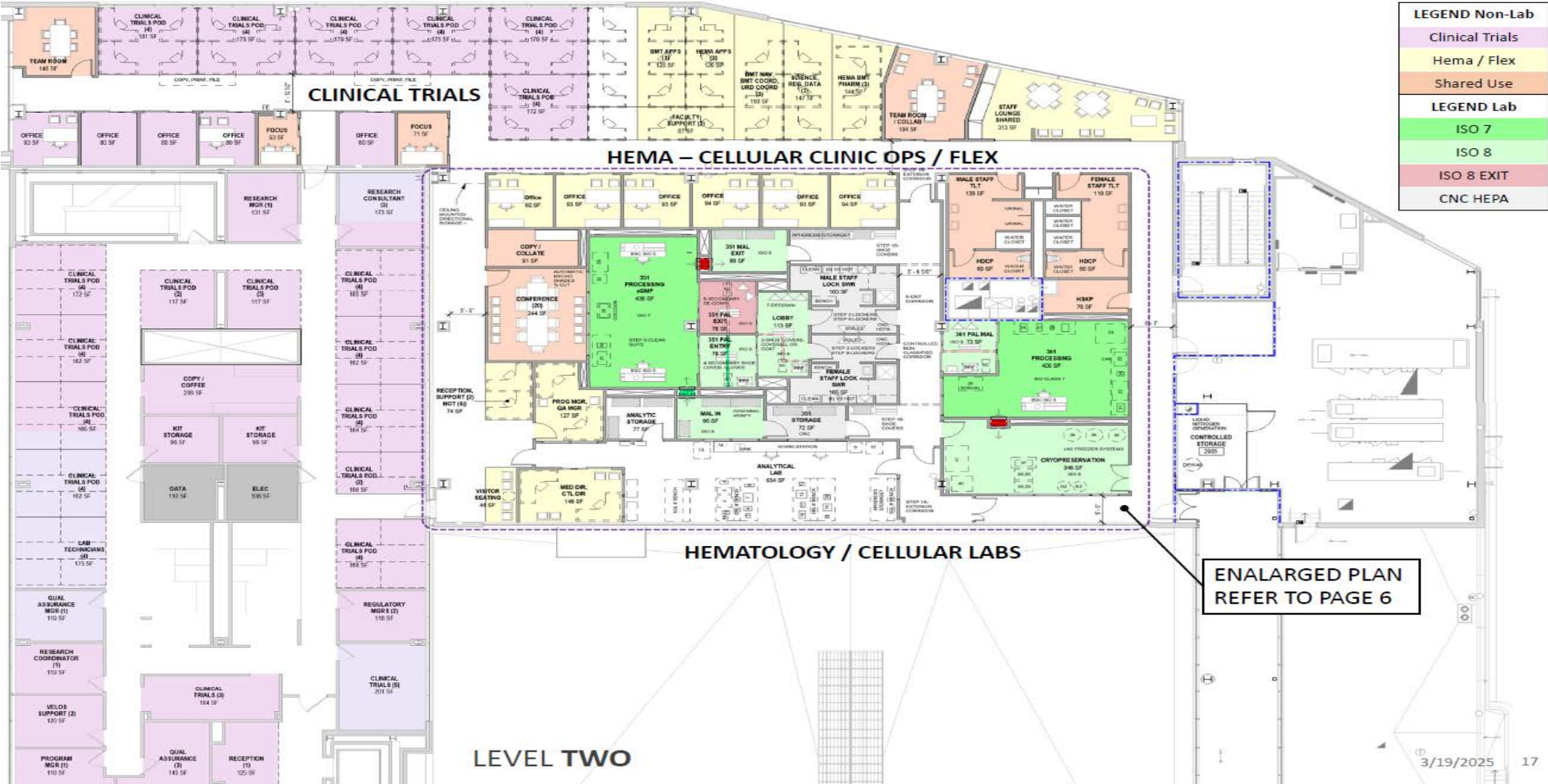
Floor 1



Floor 2



Phase III Expansion – Floor 2 GMP Lab and Clinical Research Office Expansion



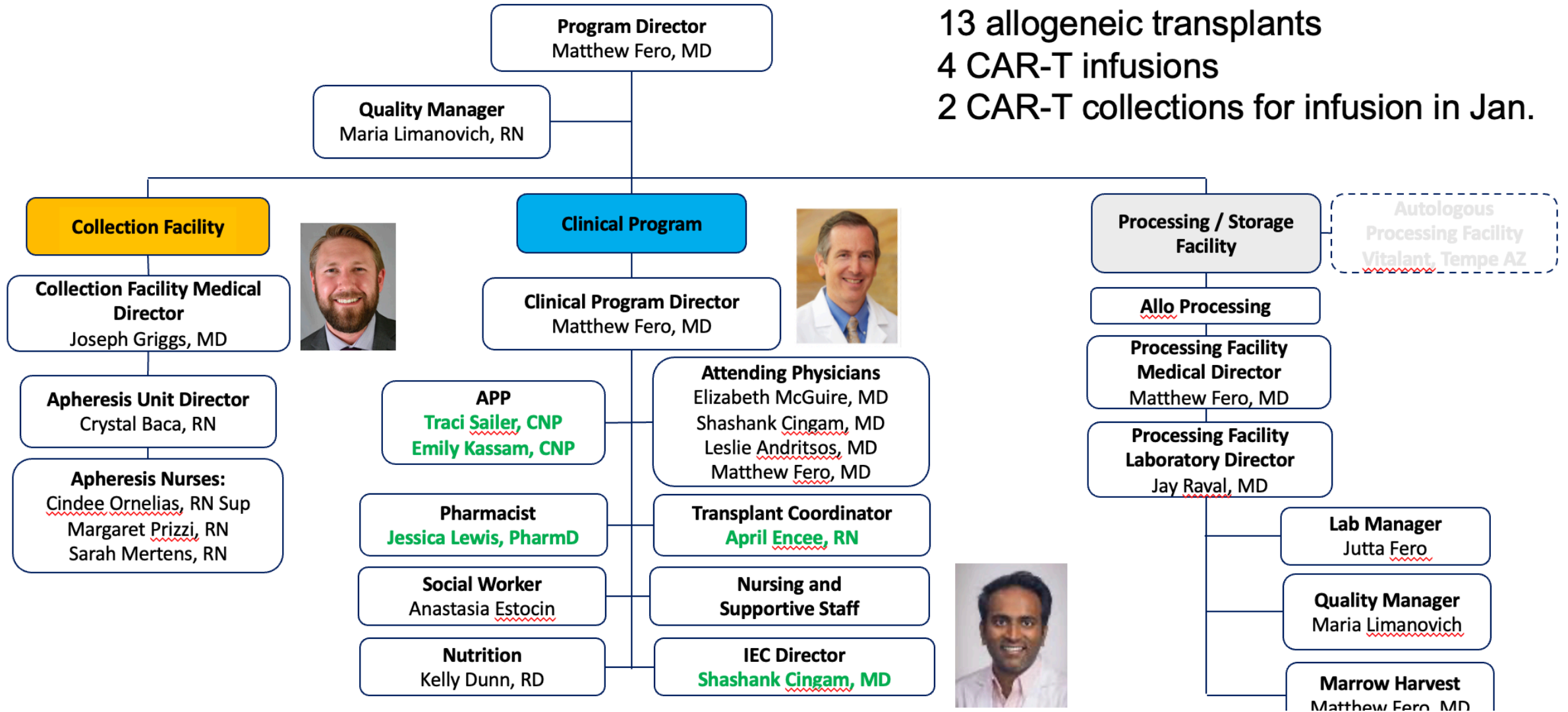
UNM BMT Program

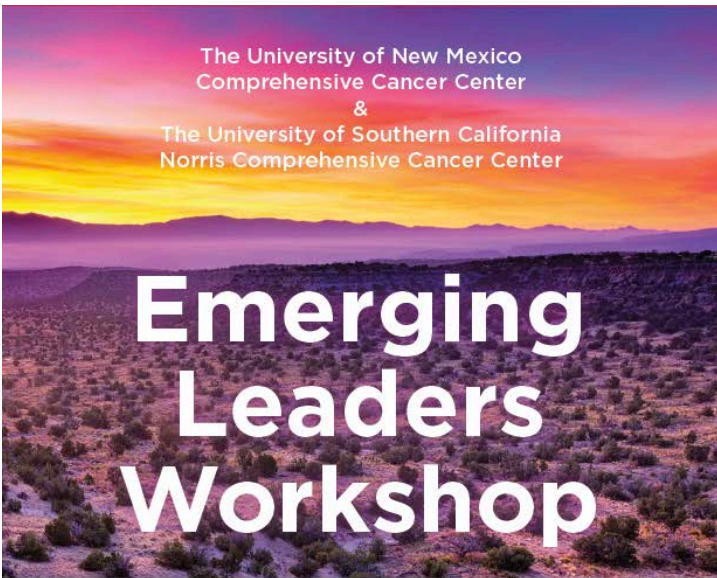
CY 2024

13 allogeneic transplants

4 CAR-T infusions

2 CAR-T collections for infusion in Jan.





The University of New Mexico
Comprehensive Cancer Center
&
The University of Southern California
Norris Comprehensive Cancer Center

Emerging Leaders Workshop

Changing the Face of Leadership



June 10-12 2024
Albuquerque, NM

**USC Norris Comprehensive
Cancer Center**
Keck Medicine of USC

**NM COMPREHENSIVE
CANCER CENTER**



Prajakta Adsul, MBBS, PhD, MPH

Assistant Professor,
Internal Medicine

Epidemiology,
Biostatistics, and
Preventive Medicine



Eric Barte, PhD

Associate Professor
Internal Medicine
Molecular Medicine

*Co-Director Faculty
Development
(CRTECC)



Eliseo F. Castillo, PhD

Associate Professor,
Gastroenterology &
Hepatology

*Associate Director
DEI



Jennifer Gillette, PhD

Professor
Pathology

*Associate Director
CRTECC



Neda Hashemi, MD

Associate Professor,
SOM - Internal
Medicine
Hematology/Oncology

PRMC chair

NCI Early Career
Cancer Clinical
Investigator



David Lee, MD, PhD

Associate Professor
Internal Medicine,
Hematology/Oncology,
Director of
Radiation Oncology



Shuguang Leng, MD, PhD

Assistant Professor,
Internal Medicine,
Epidemiology,
Biostatistics, and
Preventive Medicine



Diane Lidke, PhD

Professor, Pathology

Fluorescence
Microscopy Shared
Resource Director



Jacklyn Nemunaitis, MD

Assistant Professor,
Department of Internal
Medicine, Division of
Hematology/Oncology



Viswanathan Palanisamy, PhD

Professor, Internal
Medicine Molecular
Medicine *Director
ATG SR



Jessica Valdez, MD, MPH

Assistant Professor,
Department of
Pediatrics, Division
of Pediatric
Oncology



**Second Cohort to
be announced in
2025**

*Co-Director CCPS

The University of New Mexico
Comprehensive Cancer Center
&
The University of Southern California
Norris Comprehensive Cancer Center

Emerging Leaders Workshop

Changing the Face of Leadership

June 10-12 2024
Albuquerque, NM

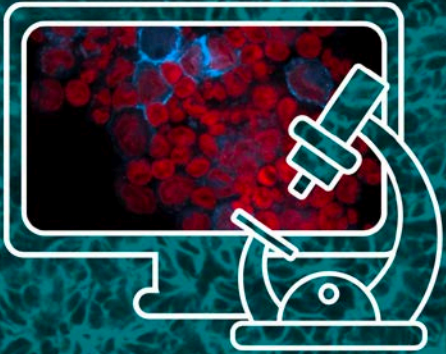
USC Norris Comprehensive
Cancer Center
Keck Medicine of USC

NM COMPREHENSIVE
CANCER CENTER





Empowering Young Minds



NM COMPREHENSIVE
CANCER CENTER

Española NM, April 2024



Thank you.

Yolanda Sanchez, PhD

Director and CEO of UNM Comprehensive Cancer Center

YolaSanchez@salud.unm.edu

<https://unmhealth.org/cancer/>

www.lobocancerchallenge.org

Presentation title

SUBTITLE

