



Behavioral Health Investment and Reform Act (SB3)

Administrative Office of the Courts - Update

Legislative Health and Human Services Committee
Wednesday, November 5, 2025

Esperanza Lucero, MBA, MSW
Behavioral Health Integration and Reform Administrator
Administrative Office of the Courts
aoceal@nmcourts.gov

“Behavioral health planning with communities.”

Key Provisions

✓ **Creation of Behavioral Health Regions:**

The bill calls for the development of regional behavioral health planning areas, allowing for more localized and coordinated service delivery. 13 Behavioral Health Regions has been designated.

• **Regional Planning and Prioritization:**

Each region will identify up to five behavioral health priorities per phase, with flexibility for more if service gaps warrant.

• **Participatory and Cross-Sector Engagement:**

Planning must involve stakeholders across sectors, including tribes, counties, service providers, youth and family advocates, and individuals with lived experience.

• **Alignment with Medicaid and Capital Planning:**

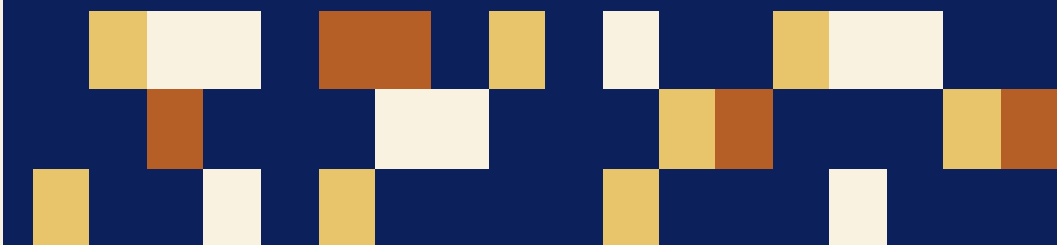
Regional plans are to be aligned with Medicaid, capital investment, and workforce strategies to ensure implementation is coordinated, fundable, and sustainable.

• **Phased Implementation:**

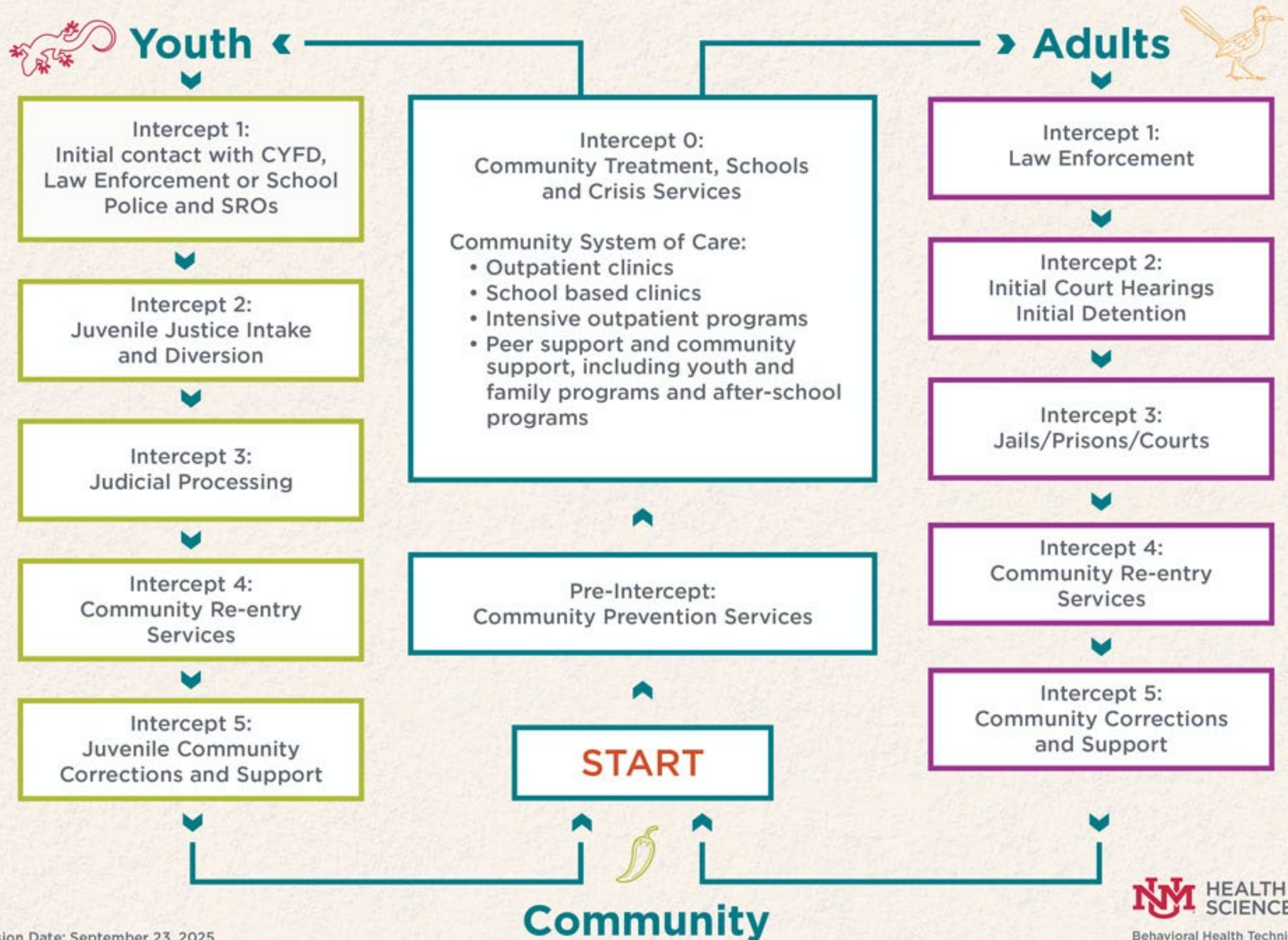
The bill outlines a phased approach, allowing regions to build capacity, test solutions, and adapt to changing needs over time.

• **Accountability and Equity:**

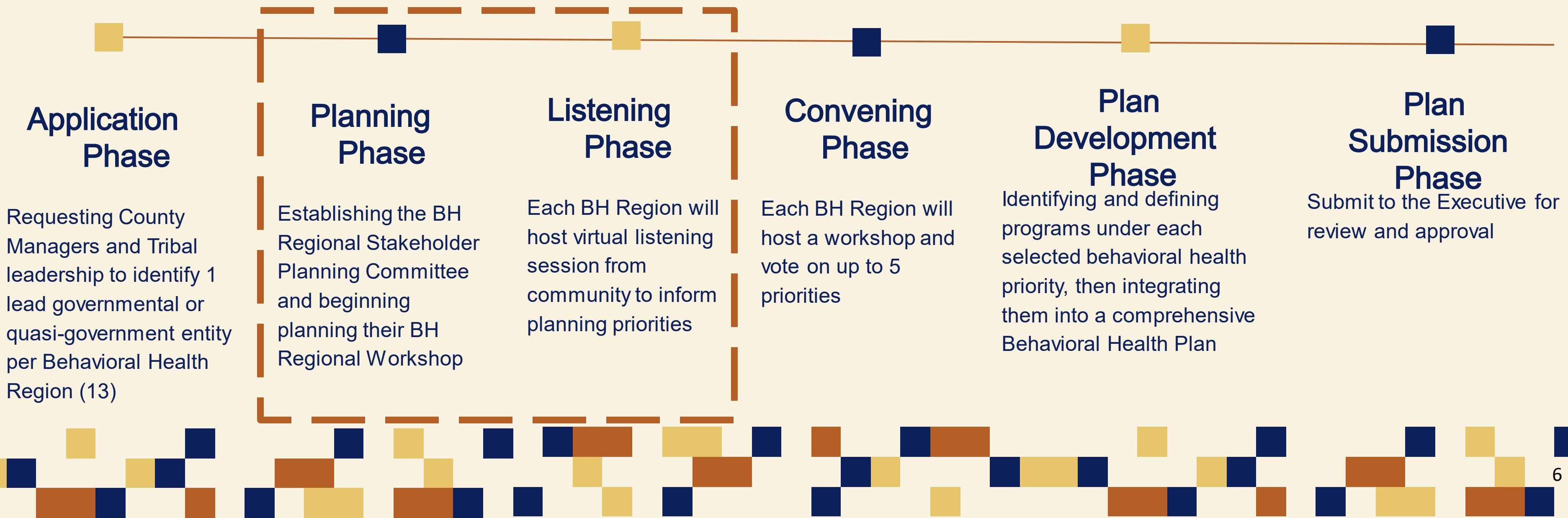
SB 3 emphasizes transparency, data use, and equity in evaluating outcomes and guiding investment.



New Mexico Enhanced Sequential Intercept Model (E-SIM)



Accountable Entity Timeline: Key Milestones from Start to Finish



12 of 13 Accountable Entities identified and awarded \$60,000 to:

- Form the Regional Planning Committee
- Conduct listening sessions, focus groups, surveys to collect input
- Hold Regional Planning Workshop
- Develop and submit Regional Behavioral Health Plan to Executive Committee

Behavioral Health Region	Accountable Entity Identified	Application Status
Region 1	Santa Fe County	Finalized
Region 2	Bernalillo County	Finalized
Region 3	Doña Ana County	Finalized
Region 4	Guadalupe County	Finalized
Region 5	Eddy County	Finalized
Region 6	Luna County	Finalized
Region 7	Socorro County	Finalized
Region 8	Taos County	Finalized
Region 9	Curry County	Finalized
Region 10	Eastern Plains Council of Governments*	-
Region 11	NW NM Council of Governments	Finalized
Region 12	Lincoln County	Finalized
Region 13	Cibola County	Partial



This is a state-supported, locally driven model

Accountable Entities will have access to extensive Technical Assistance including:

- Fiscal, Budgetary and Performance Measure Development
- Monthly technical assistance calls hosted by UNMHSC and AOC
- Event Planning Support
- Behavioral Health expertise
- Regional Plan Development Support to ensure BHRIA requirements are met
- Tribal Engagement Strategies

Workshop Timeline

2025

Bernalillo County – Region 2
11/20/2025 - 11/21/2025

Curry County – Region 9
12/03/2025 - 12/05/2025

San Juan/McKinley – Region 11
12/9/2025 - 12/11/2025

Dona Ana County (Adult) – Region 3
12/16/2025

Santa Fe County – Region 1
12/18/2025 - 12/19/2025

2026

Lincoln County – Region 12
1/12/2026 - 1/14/2026

Dona Ana County (Youth) – Region 3
2/26/2026 - 2/27/2026

Eddy County – Region 5
3/03/2026-3/05/2026

Taos County – Region 8
3/11/2026 - 3/13/2026

Socorro County – Region 7
3/18/2026 - 3/20/2026

Luna County – Region 6
3/24/2026 - 3/26/2026

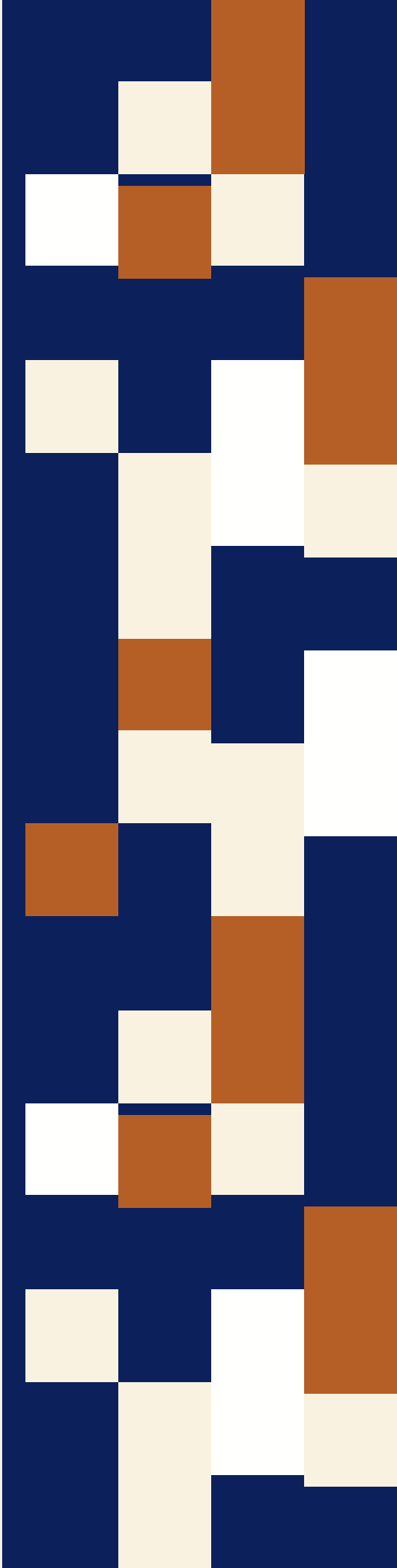
Guadalupe County – Region 4
TBD

Eastern Plain COG* - Region 10
TBD

Cibola County – Region 13
TBD

Pending

* Indicates Anticipated Accountable Entity



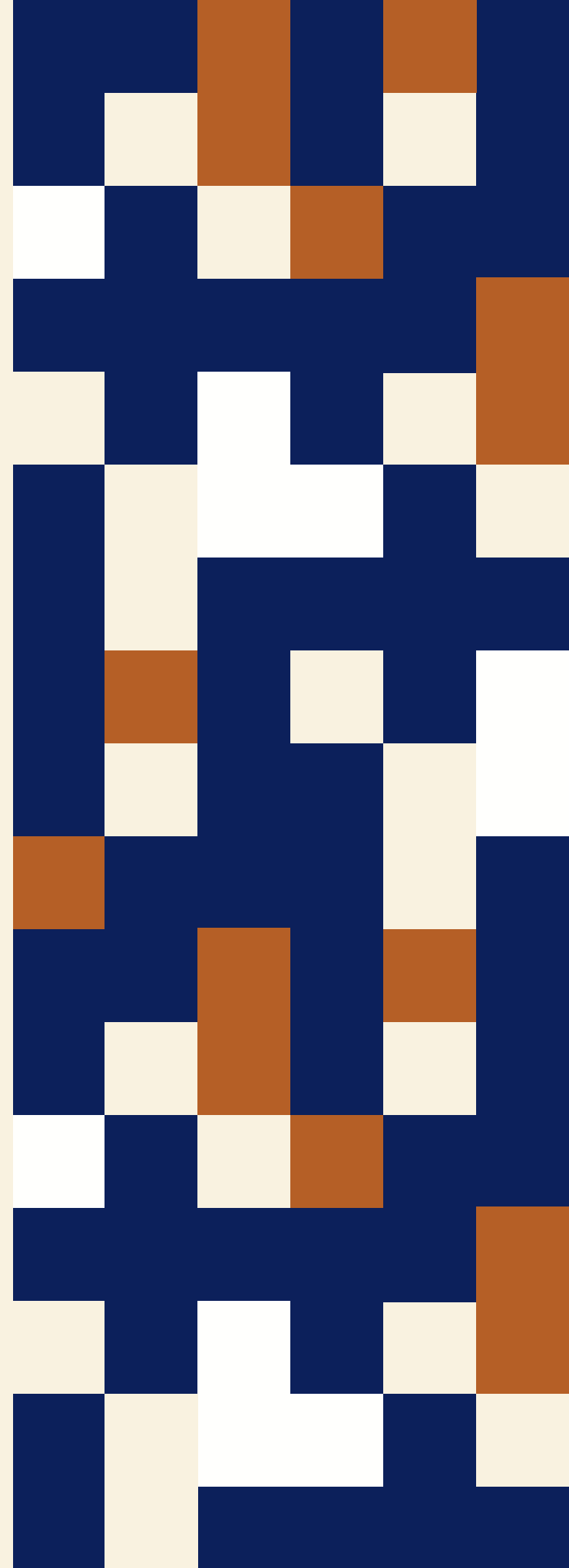
Get Involved!

Statewide

- ❖ Contact AOC - Esperanza Lucero - aoceal@nmcourts.gov
- ❖ Contact HCA - Kristie Brooks - kristie.brooks@hca.nm.gov
- ❖ Join the next Executive Committee Meeting – November 12, 2025

Regional Planning Efforts

- ❖ Contact your Regional Accountable Entity, District Court, local Health Council, or Local Behavioral Health Collaborative
- ❖ Participate in regional listening sessions
- ❖ Join regional focus groups
- ❖ Participate in regional planning workshops
- ❖ Submit feedback to the AOC



**Get in Touch: We Want Your
Feedback and/or
Join the AOC Newsletter**



AOC BHRIA Contact

Esperanza Lucero, MSW, MBA

Behavioral Health Integration and Reform Administrator

EMAIL ADDRESS

aoceal@nmcourts.gov

PHONE NUMBER

505 - 637 - 1617

