

BERN



Count on us.

Resource Reentry Center & Transition Planning

Division of Behavioral Health Authority

Resource Reentry Center



- Officially opened in June 2018.
- RRC is funded through the Behavioral Health Authority via the one-eight percent gross receipts tax; total budget of \$1.4 million per year (operating and staff)
- RRC is located in downtown Albuquerque and is housed in the Public Safety Bldg. It is open 24 hrs./7 day per week
- The RRC is the first stop for those releasing from the Metropolitan Detention Center (MDC) in Bernalillo County.
- Voluntary program, designed to provide a safe landing spot for returning citizens releasing from MDC, which plays an important role in Jail Diversion and Reentry efforts.
- A primary goal of the RRC is assessing and connecting clients to appropriate resources and services in the community to provide a warm hand-off.

Transition Planning Begins at Booking:

- At booking, each incoming arrestee completes an *Intake Receiving Screening*; this is provided by MDC's medical contractor.
- This screening uses validated instruments to assess criminogenic risk, prevalence of substance or alcohol use, behavioral health needs, and suicidality.
- Based on the weight of the responses, an automated score is produced and assigns the individual to a specific risk group.
- This grouping assists service professionals in the jail and at the RRC to determine the appropriate level of care and to develop focused links to services (i.e. needs assessments, transition plans, types of referrals).



METROPOLITAN DETENTION CENTER



13 Social Service Coordinators (SSC)
Metropolitan Detention Center

- Population: Low to moderate risk inmates (all units);
- Services: In-house case mgmt., Medicaid enrollment, Resource referrals & information, Jail navigation, Court and attorney liaisons



8 Transition Planners (including supervisor & assistant)
University of NM Hospital– Jail Diversion Services

- Population: Moderate to High risk (all units)
- Services: Conduct Reentry Needs Assessments, Transition Planning, Referrals, Schedule appointments, Coordinate with RRC



7 Discharge Planners(Medical/PSU)
MDC Medical Contractor

- Population: Individuals housed in the Psychiatric Acute Care Unit
- Services: Preliminary & Discharge planning/coordination, Cross-collaboration with TPT/SSCs and other community providers

RRC



8 RRC Care Managers, 4 Social Service Technicians, Program Supervisor, and Transition Planning Services Manager
Bernalillo County BHA

- Population: All clients released from MDC jail; all risk levels
- Services: Warm hand-off to community partners, referrals, transportation, prescription access, conduct Reentry Needs Assessments, Transition Planning; Narcan education and distribution, Motel vouchers

COMMUNITY SUPPORT



Various Community Service Providers/Partners

- Population: All risk levels with emphasis on moderate to high need individuals
- Services: varied; community partner related to resources (i.e. case mgmt., housing, vocational/educational asst, shelter, food, transportation, medication assistance, etc.)

Screen, Assess, Plan




Transition

Link

Pre-release

- Prior to release, individuals who are considered moderate to high need (risk group 6-8), meet with a Transition Planner to complete a Reentry Needs Assessment and a Transition Plan.
- UNMH Discharge Planners meet with individuals with high medical and/or psychiatric needs.
- BernCo Social Services Coordinators meet with the other individuals.
- Applications to community programs and providers can be completed.
- Close coordination between the Transition Planners, Social Services Coordinators, Discharge Planners, and others with the RRC and community providers. Requests are given to the RRC and added to a tracking sheet.

Getting released soon?
Here are some helpful numbers you should know

 <p>Resource Reentry Center (RRC) 505-468-7832 or 505-468-7831</p> <ul style="list-style-type: none">➤ Case Managers are available to answer questions or talk to you about your next steps when you are released.➤ Case Managers can assist with information on local resources or how to access services in the community.➤ This service is available 24/7.	 <p>Metro Pretrial Services Metro and Felony Division 841-8133</p> <ul style="list-style-type: none">➤ If ordered to Metro PTS, you are required to call immediately upon release. Monday – Friday 7:30 a.m.-4:00 p.m.➤ After 4 p.m., or on Saturday or Sunday, you <u>must</u> call the next business day, no later than 3 p.m.	 <p>District Court Pretrial Services Intake Unit: 841-6741 or 841-5444</p> <ul style="list-style-type: none">➤ If ordered to PTS, you are required to complete a telephonic intake immediately upon release.➤ Monday-Friday 8 a.m.-3:30 p.m.➤ After 5 p.m., or on Saturday or Sunday, you <u>must</u> call the next business day, no later than 3:30 p.m.➤ If you are ordered to comply with PTS or Soberlink, <u>do not</u> report in person, please contact your officer.
---	---	--

Updated 1/15/21

Post release:

- Upon release, MDC transport vans drop clients off at the Resource Reentry Center (RRC), where they can meet with on site care managers who are available to meet with individuals to discuss next steps.
- Clients who completed a transition plan while in custody meet with a care manager to actualize the goals they set.
- Clients who are released swiftly without consulting with a Transition Planner or Social Services Coordinator while in jail can meet with an RRC care manager.
- Care managers complete applications, referrals, and make immediate, direct connections with community providers.



RRC Services at Time of Release

- Active greeter process & roll call upon transport van arrival
- Access to phones, charging station, snacks, coffee, computers, clothing, transportation and housing resources, Narcan, etc.
- On site care management
- All care managers are trained in and complete Transition Plans at the RRC
- Motel voucher screening and connection to shelters
- Staff trained in Motivational Interviewing and Management of Aggressive Behaviors
- Universal Release of Information
- Narcan training and distribution site
- Prescription access
- Ability to spend the night until daylight hours
- Metro & District Pretrial connections
- Coordination with community partners and transportation to provide warm hand-offs
- Community providers meeting with clients at the RRC
- Out of custody competency evaluations



Prioritized Client Engagements

- Individuals with high risk and needs scores from MDC
- Individuals with high medical and/or psychiatric needs
- Individuals with substance use disorders
- Individuals identified as Familiar Faces
- Individuals with requests from community partners

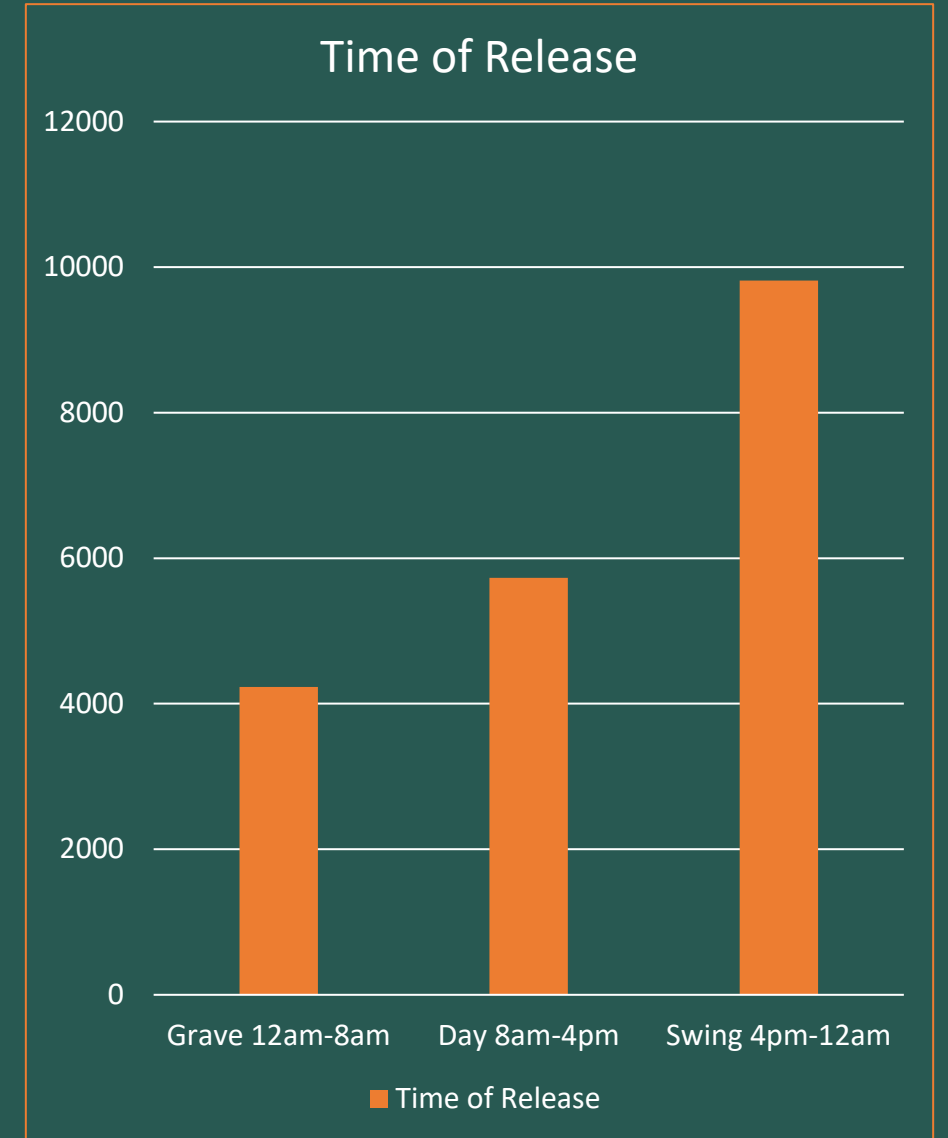
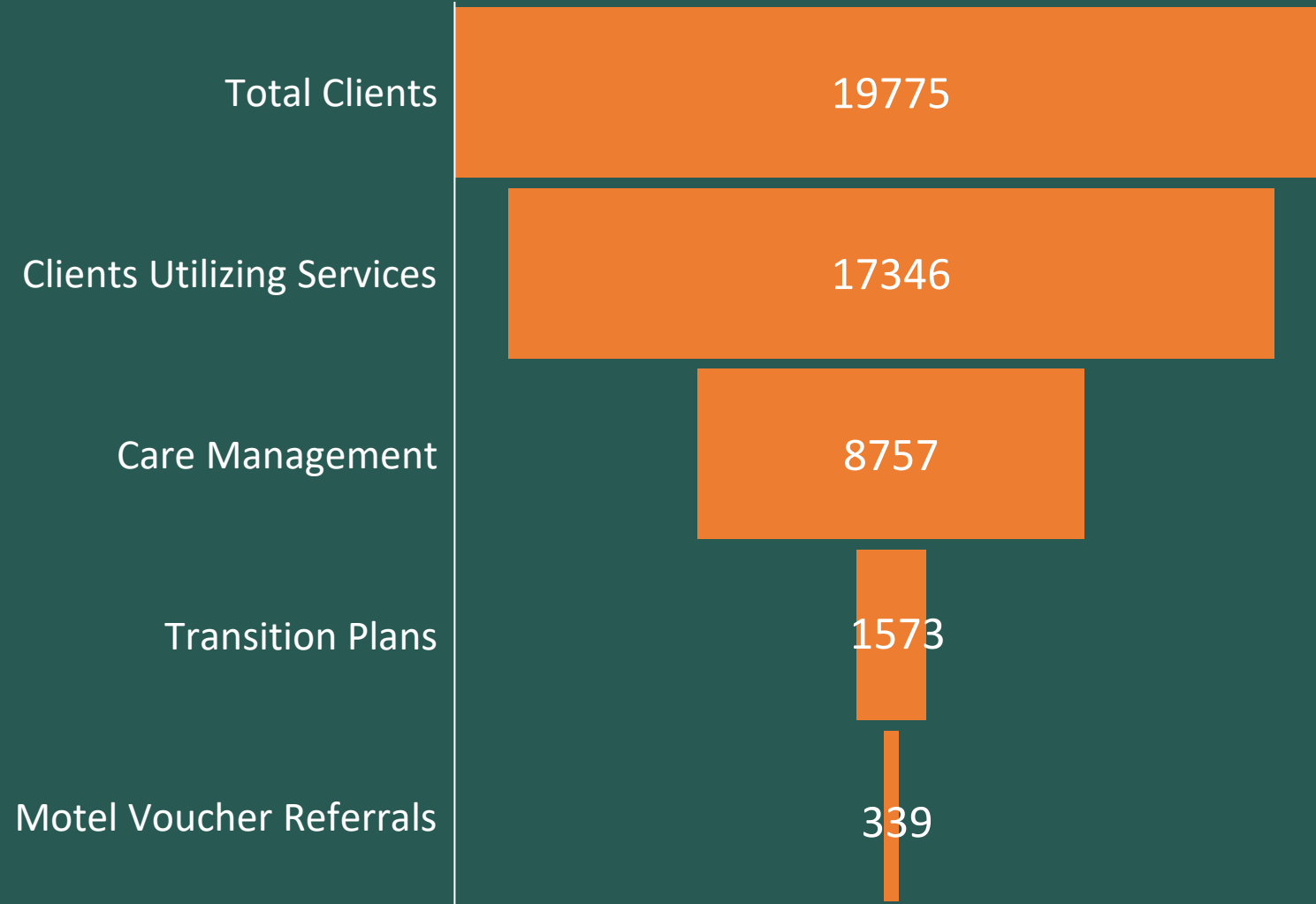


Connections to Community Organizations

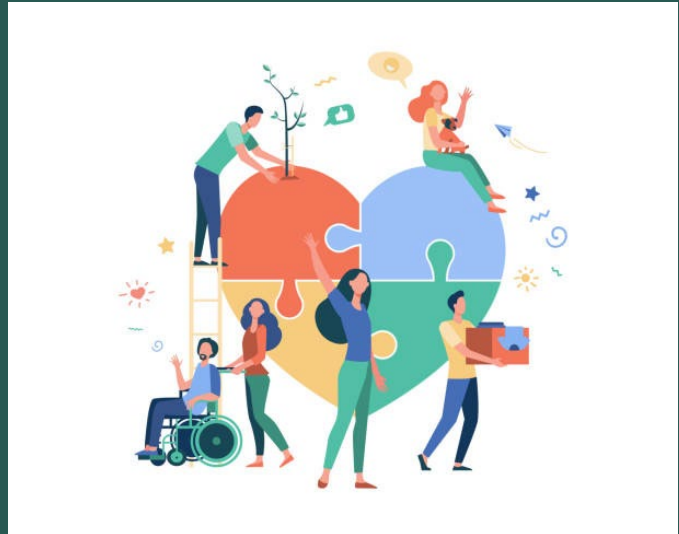
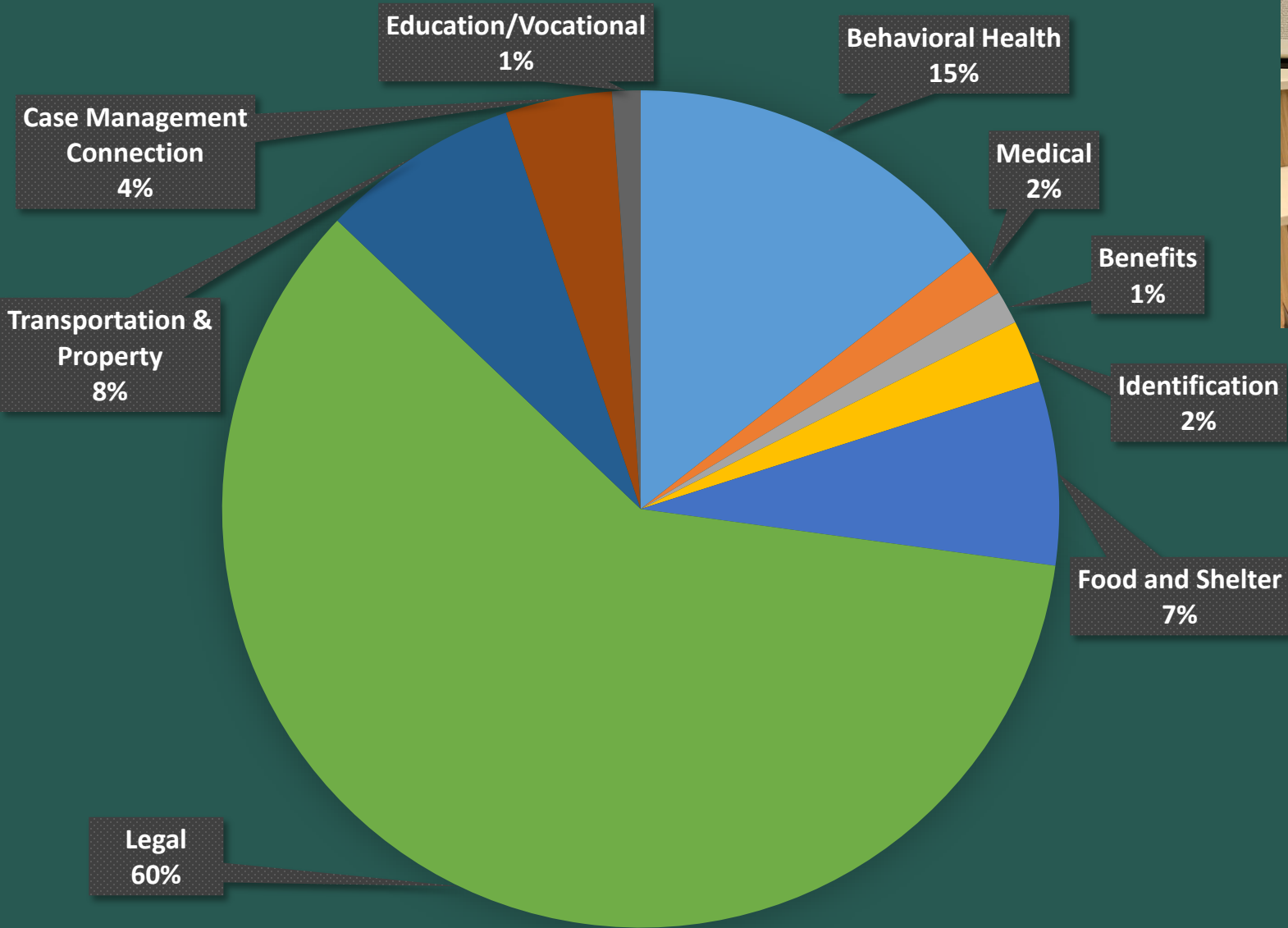
- RRC staff can transport clients to community organizations and provide a warm-handoff.
- These community organizations include detox programs, substance use treatment, transitional living, sober living, and other programs; mental and behavioral health treatment; and legal requirements.
- Program examples:
 - CARE Campus, Courageous Transformations, Ideal Option, Anchor Behavioral Health, Vanguard, Myers Place, Gateway East & Recovery.
 - For legal requirements: pretrial, probation, public defenders' office, and district attorney.



Fiscal Year 2025



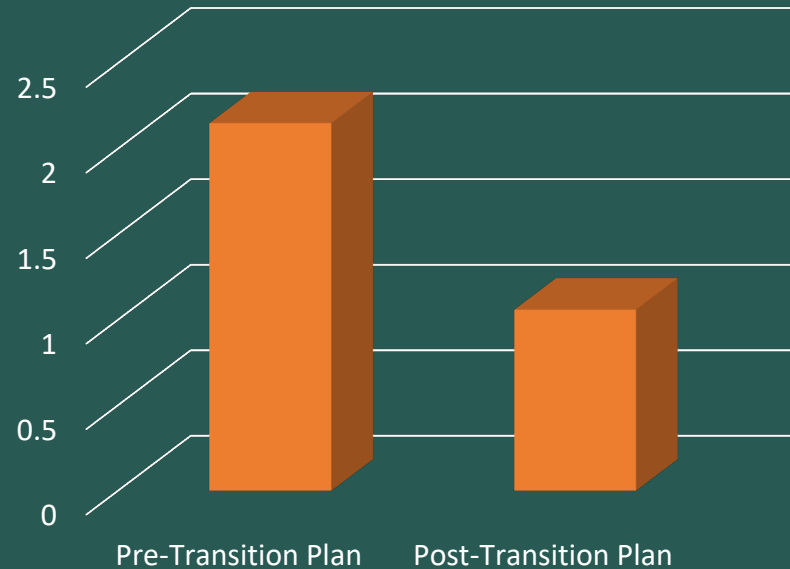
Types of Case Management Services Requested



Transition Planning Data and Statistics

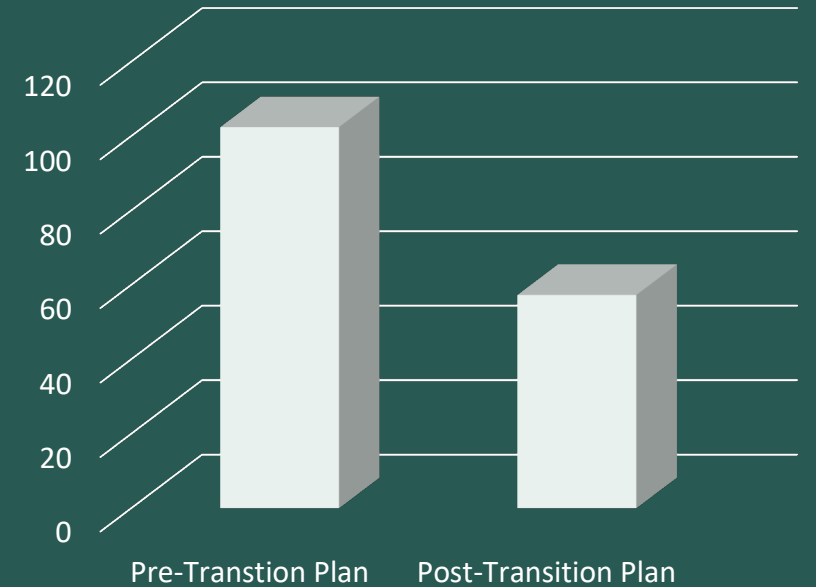
The impact of transition planning is statistically significant in decreasing the length of stay for individuals that engage in transition planning.

Number of Bookings



- Prior to engaging in transition planning, the average number of bookings was 2.15.
- After engaging in transition planning, the average number of bookings decreased to 1.06.

Length of Stay



- Prior to engaging in transition planning, the average length of stay was 102.45 days.
- After engaging in transition planning, the average length of stay decreased to 57.31 days.

Does engagement in transition planning result in cost savings?



- At the time of the study, it cost approximately \$169 per day to house someone in the Metropolitan Detention Center
- When we look at the reduction in length of stay in jail for clients engaging in transition planning, we are **saving taxpayers approximately \$6.2 MILLION per year**

Next Steps – Expanding the Resource Reentry Center

- Drop In Center
- Community Providers on site
- Follow Up Services
- Overnight Accommodations
- Legal services
- Long term support
- Vocational Training
- Medication for Opioid Use Disorder



Questions?

Dr. Wayne Lindstrom

Deputy County Manager –
Behavioral Health Authority
Email: wlindstrom@berncoco.gov

Sarah Spain, MSW, MPH

Transition Planning
Services Manager
Email: sspain@berncoco.gov