



New Mexico State Land Office

Presented by Rachael N. Lorenzo, MPA
(Mescalero Apache Tribe, Pueblo of Laguna)
Assistant Commissioner of Cultural Resources

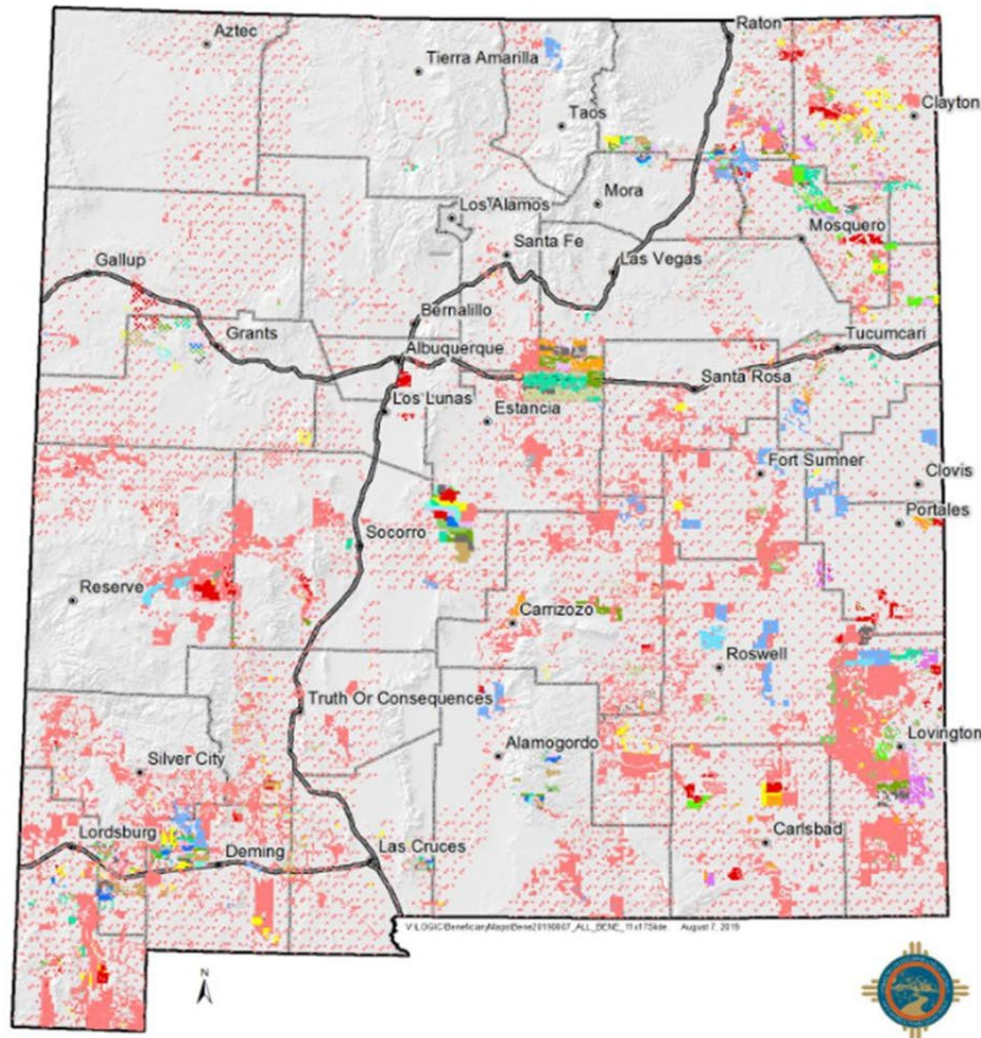
Cultural Resources Office

 CROINFO@slo.state.nm.us

 [nmstatelands.org/divisions/
cultural-resources-office](https://nmstatelands.org/divisions/cultural-resources-office)



Our beneficiaries



New Mexico Beneficiaries

- Carrie Tingley Hospital
- Charitable, Penal and Reform
- Common Schools
- Eastern New Mexico University
- Improvements to the Rio Grande
- New Mexico Boys School
- New Mexico Highlands University
- New Mexico Institute of Mining Technology
- New Mexico Military Institute
- New Mexico Miners Hospital
- New Mexico Penitentiary
- New Mexico State Hospital
- New Mexico State University
- New Mexico School for the Deaf
- New Mexico Schools for the Deaf/Visually Impaired
- New Mexico School for the Visually Impaired
- New Mexico State Hospital
- New Mexico State Parks Commission
- New Mexico State University
- Northern New Mexico College
- Public Buildings
- University of New Mexico
- Water Reservoirs
- Western New Mexico University
- Western New Mexico University/New Mexico Highlands University
- Western NM University/NM Highlands University

The reality of the land we manage- it's stolen.

What have we done to mitigate this?

- Annual THPO Summit, every May
- Move archaeologists from the Surface Resource Division (SRD)
- Create a Cultural Resources Office in 2021
- Examine our existing internal policies and present them to tribes
- Land exchanges
- Cultural Properties Rule (NOT part of Section 106)
- Holding oil & gas companies accountable for abandoned wells
- Investing in Planet to monitor spills
- NO fresh water sales for O&G production
- Ongoing communication with tribes & updated resources

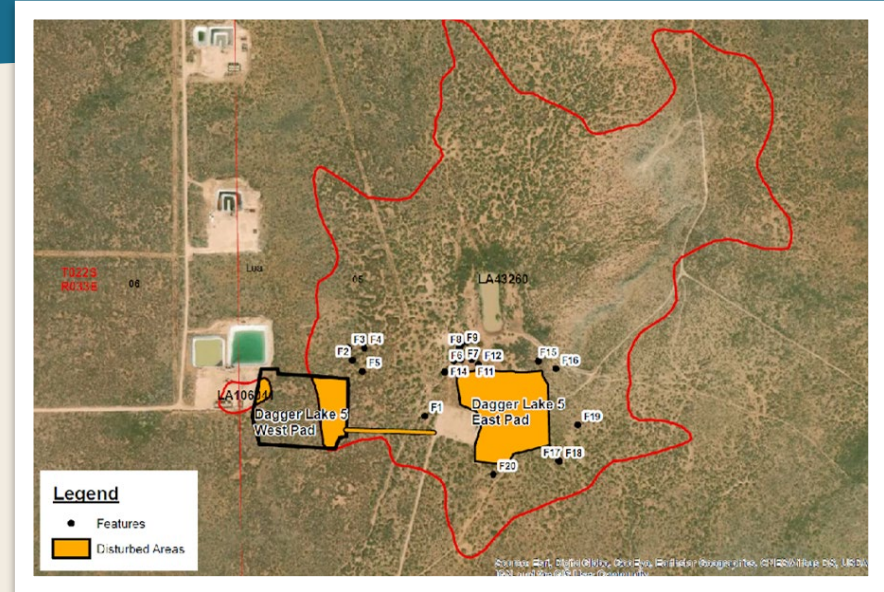
The Cultural Properties Rule

Published September 27, 2022

Effective December 1, 2022



“The previous approach to cultural properties on trust lands was, ‘if you break it, you buy it,’ and that simply isn’t good enough. This rule gives my staff the tools and authority to ensure parcels are thoroughly surveyed for cultural properties before irreparable harm is done. Cultural properties found on state trust lands are very much a part of New Mexico’s story, and it is my duty to protect these resources as much as the land itself.”



NMSLO Resources for Tribes



NM land office 101

History of the land office

- Ferguson Act of 1898
- [Enabling Act of 1910](#)

Who we have historically served

- The beneficiaries
- Lessees

How we have typically worked over the years

- No conversation about the history of the land office



Image courtesy of the NPCA

NM land office 101

The potential for flexibility

- Land exchanges & fees
- Implementing rules & policies

Our legal obligations

- Base leases- we can't change 'em!
- Legislative approval of our budget
- The revenue from business activities

Accomplishments

- We are now our own division & growing!
- About 2700 acres surveyed for FY22
- [House Bill 95](#)



Image courtesy of the NPCA

CRO Core Responsibilities



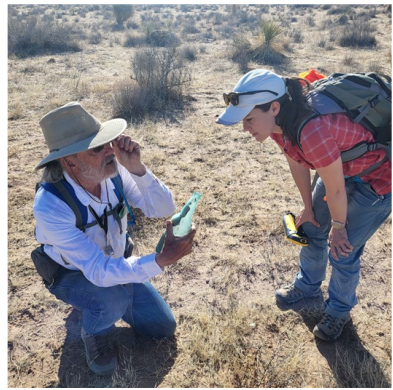
Project Review



Stewardship



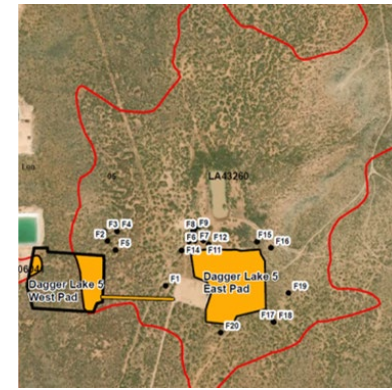
Education



Fieldwork



Consultation



**Compliance
Investigations**

NMSLO FY22 Annual Report





Da-wa-eh/thank you!

Cultural Resources Office

 CROINFO@slo.state.nm.us

 [nmstatelands.org/divisions/
cultural-resources-office](https://nmstatelands.org/divisions/cultural-resources-office)

