

LESC School District Fact Sheet

Las Vegas City Schools

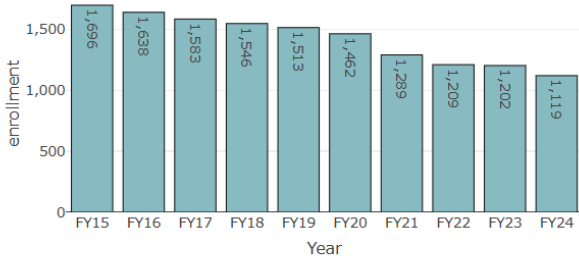
July 23, 2025

Prepared by: Arlo Menchaca



For more data, visit the [LESC District Dashboard](#)

Total Enrollment
FY15-FY24, First Enrollment Date (40D)*



↓ ENROLLMENT HAS DECREASED
34.0%
since FY15.

↓ ENROLLMENT HAS DECREASED
7.4%
since FY22.

*Note: Due to issues with the Nova real-time student data system, PED did not report 40D enrollment for FY24. Figures for FY24 were collected on the second reporting date (80D). Historically, 80D counts tend to be lower than 40D counts.

Source: PED and LESG Files

District Leadership

Melissa Sandoval
Superintendent
(505) 429-0272

melissasandoval@cybercardinal.com

Vanessa Garcia
Associate Superintendent
(505) 454-5701

vanessagarcia@cybercardinal.com

Denise Petersen
Executive Assistant to the
Superintendent
(505) 454-5721

denispetersen@cybercardinal.com

School Board:

- Michael A. Quintana, President
- Paul G. Gonzales, Vice President
- Joyce D. Meserve, Secretary
- David R. Cordova
- *Dennis E. Romero*

Demographics

FY24, All Valid Enrollments

Race/Ethnicity	Students	Percent	Other Demographics	Students	Percent
Asian	Masked	Masked	Economically Disadvantaged	612	48.5%
Black	Masked	Masked	English Learners	124	9.8%
Caucasian	79	6.3%	Female	624	49.4%
Hispanic	1,159	91.8%	Homeless and Foster	59	4.7%
Multirace	Masked	Masked	Male	639	50.6%
Native American	Masked	Masked	Migrant		
Pacific Island			Students with Disabilities	230	18.2%

Source: PED

Source: PED

Note: Small subgroups of students masked to protect student privacy. Demographic counts include all student enrollments, potentially including students who may have disenrolled during the school year.

Teacher Compensation by License Level

FY23

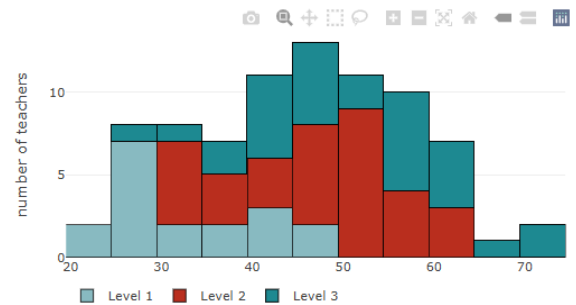
Level	Average Salary - LAS VEGAS CITY	Average Salary - Statewide	Percent Difference
Level 1	\$53,962	\$54,028	-0.1%
Level 2	\$64,126	\$62,987	1.8%
Level 3	\$73,320	\$72,998	0.4%
Overall	\$65,172	\$64,614	0.9%

Source: LESG Analysis of PED Data

Teacher Qualifications

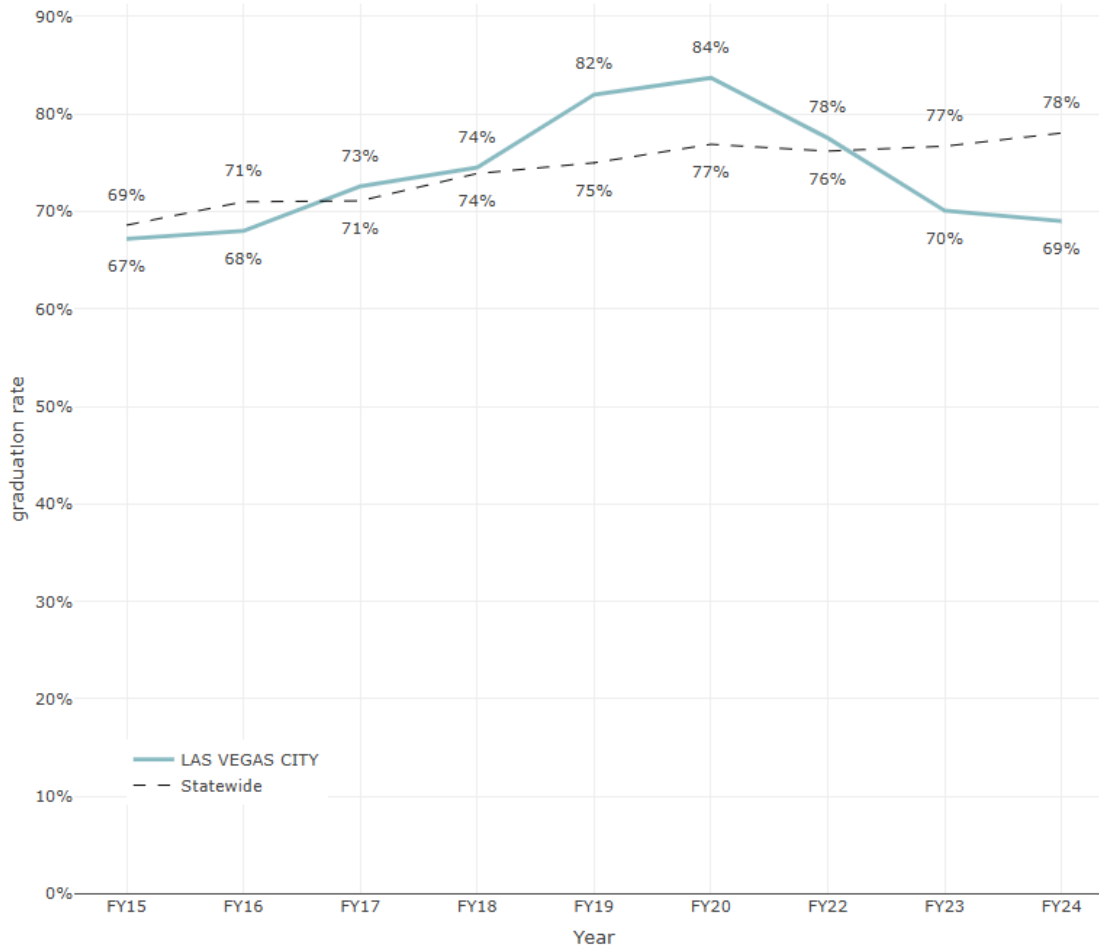
Number of Teachers by Age and License Level

FY23



Graduation Rate Over Time

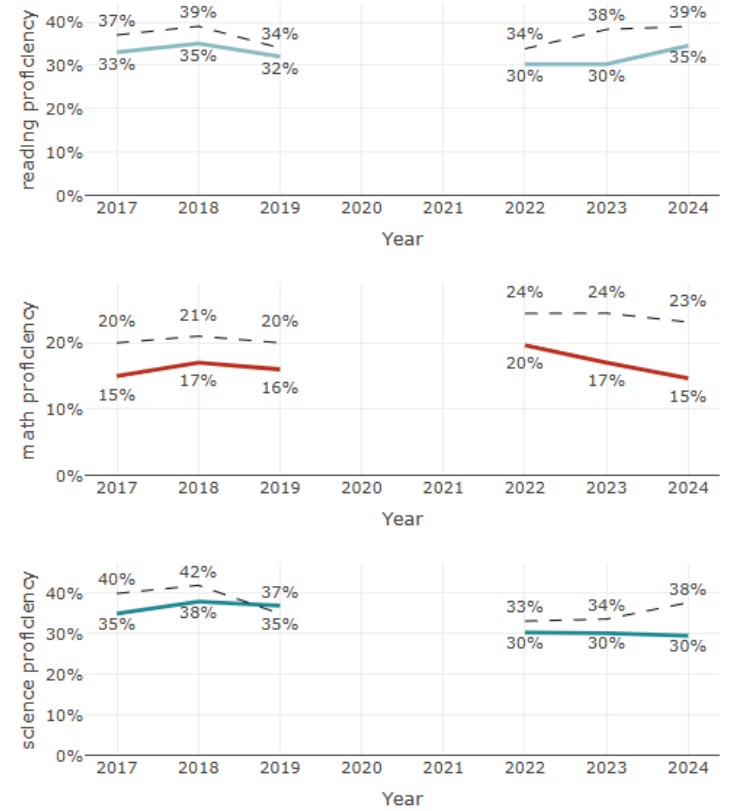
Four-Year Cohort



Source: LESC Analysis of PED Data

Proficiency Rates

Grade Levels: All Grades (3-11)



Source: PED and LESC Files

Data may not be available for all years or all grade levels. To protect student privacy, PED only reports data for students in cohorts of 10 students or greater.

During the Covid-19 pandemic, students were not assessed. New Mexico transitioned from the PARCC assessment in 2017 through 2019 to the NM-MSSA assessment in 2022. Pre- and post-pandemic assessment results are not directly comparable.

LESC School District Fact Sheet

Pecos Independent Schools

July 23, 2025

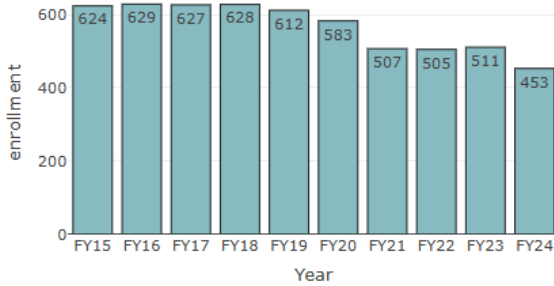
Prepared by: Arlo Menchaca



For more data, visit the LEESC District Dashboard

Total Enrollment

FY15-FY24, First Enrollment Date (40D)*



Source: PED and LEESC Files

↓ ENROLLMENT HAS DECREASED
27.4%
since FY15.

↓ ENROLLMENT HAS DECREASED
10.3%
since FY22.

*Note: Due to issues with the Nova real-time student data system, PED did not report 40D enrollment for FY24. Figures for FY24 were collected on the second reporting date (80D). Historically, 80D counts tend to be lower than 40D counts.

District Leadership

Debra Sena-Holton
Superintendent, Transportation
Director, Federal Programs, Athletic
Director & Homeless Liaison
(505) 757-4700
dsena@pecos.k12.nm.us

Melissa Valencia-Flores
Administrative Assistant
(505) 657-1682
melissatvalencia@pecos.k12.nm.us

Chris Moore
Business Manager
(505) 657-1713
chris@k12accounting.com

- School Board:**
- Grady Barrens, President
 - Harold Garcia, Vice President
 - Claudette Roybal, Secretary
 - James Tanuz
 - Edna Herrera

Demographics

FY24, All Valid Enrollments

Race/Ethnicity	Students	Percent	Other Demographics	Students	Percent
Asian			Economically Disadvantaged	219	43.8%
Black			English Learners	54	10.8%
Caucasian	27	5.4%	Female	250	50.0%
Hispanic	470	94.0%	Homeless and Foster	32	6.4%
Multirace	Masked	Masked	Male	250	50.0%
Native American	Masked	Masked	Migrant		
Pacific Island			Students with Disabilities	101	20.2%

Source: PED

Source: PED

Note: Small subgroups of students masked to protect student privacy. Demographic counts include all student enrollments, potentially including students who may have disenrolled during the school year.

Teacher Compensation by License Level

FY23

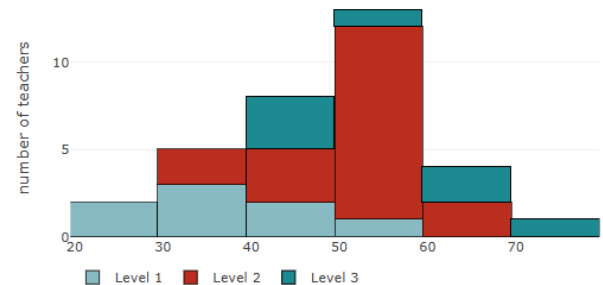
Level	Average Salary - PECOS	Average Salary - Statewide	Percent Difference
Level 1	\$54,000	\$54,028	-0.1%
Level 2	\$61,656	\$62,987	-2.1%
Level 3	\$68,714	\$72,998	-5.9%
Overall	\$61,297	\$64,614	-5.1%

Source: LEESC Analysis of PED Data

Teacher Qualifications

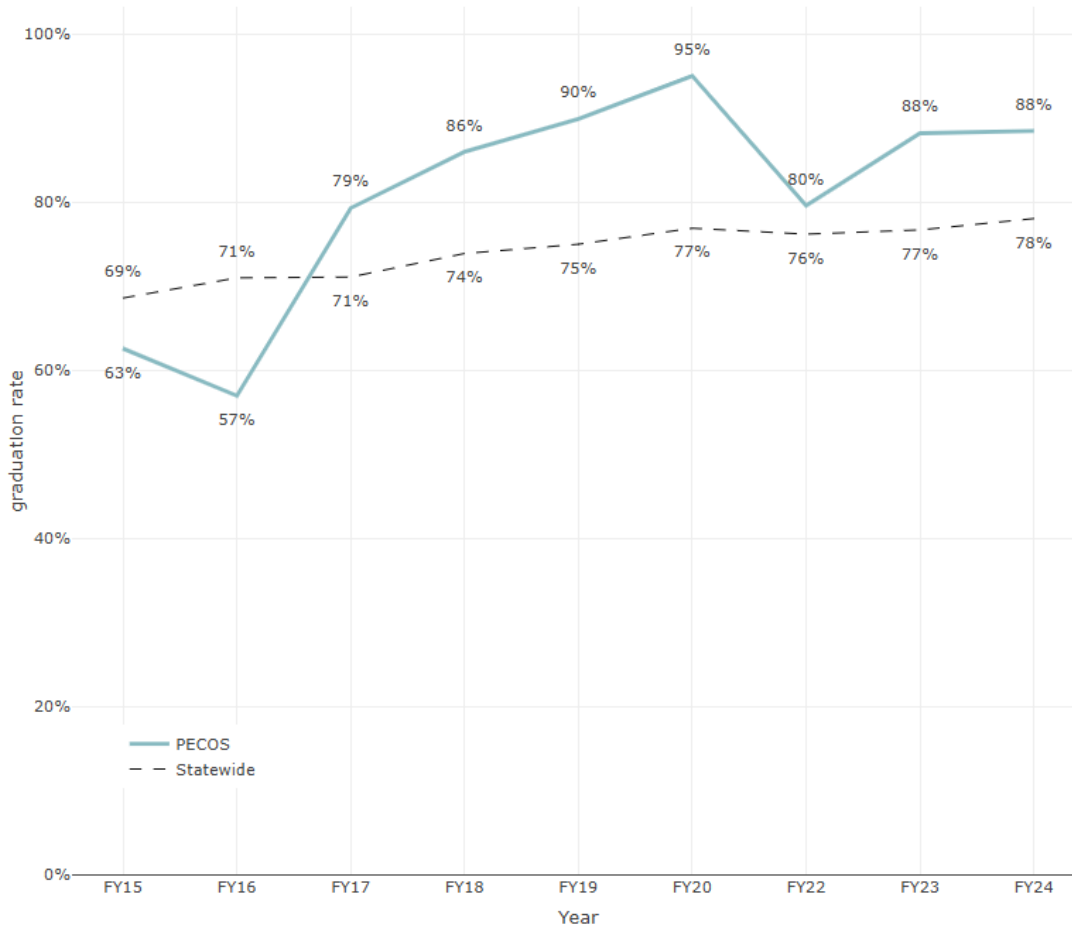
Number of Teachers by Age and License Level

FY23



Graduation Rate Over Time

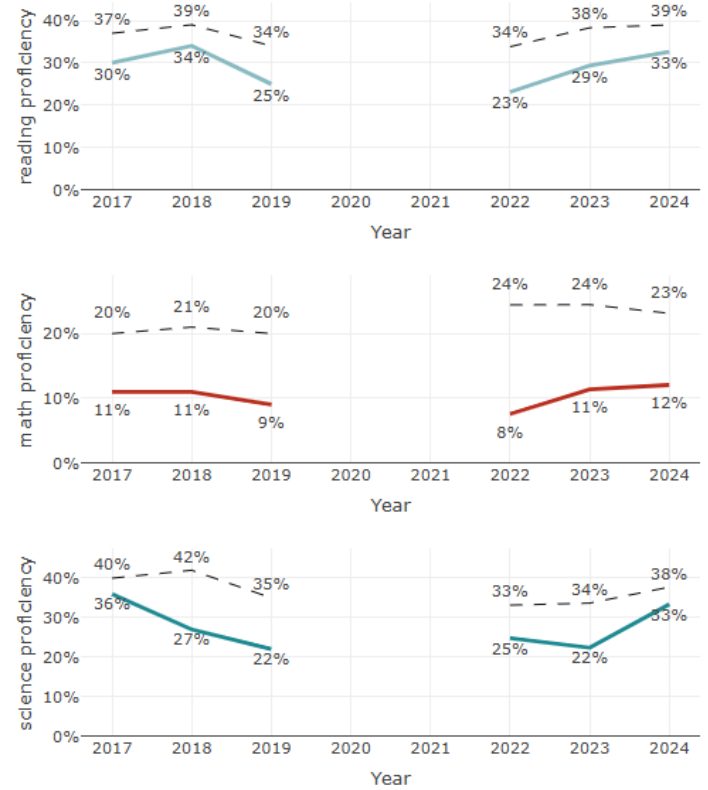
Four-Year Cohort



Source: LESC Analysis of PED Data

Proficiency Rates

Grade Levels: All Grades (3-11)



Source: PED and LESC Files

Data may not be available for all years or all grade levels. To protect student privacy, PED only reports data for students in cohorts of 10 students or greater.

During the Covid-19 pandemic, students were not assessed. New Mexico transitioned from the PARCC assessment in 2017 through 2019 to the NM-MSSA assessment in 2022. Pre- and post-pandemic assessment results are not directly comparable.

LESC School District Fact Sheet

Santa Rosa Consolidated Schools

July 23, 2025

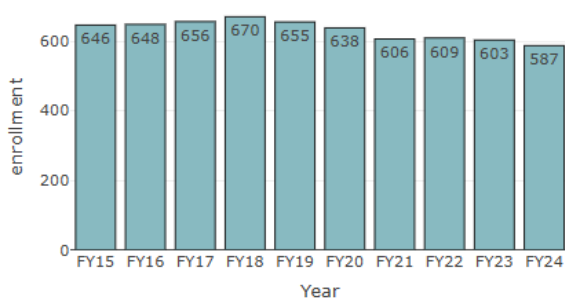
Prepared by: Arlo Menchaca



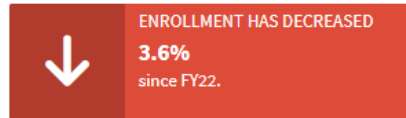
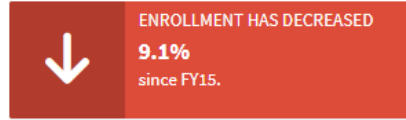
For more data, visit the [LESC District Dashboard](#)

Total Enrollment

FY15-FY24, First Enrollment Date (40D)*



Source: PED and LESG Files



*Note: Due to issues with the Nova real-time student data system, PED did not report 40D enrollment for FY24. Figures for FY24 were collected on the second reporting date (80D). Historically, 80D counts tend to be lower than 40D counts.

District Leadership

Martín Madrid
Superintendent
(575) 472-3171

School Board:

- Keith Ross, President
- Susan Abeyta-Lynch, Vice-President
- Angelo Romo, Secretary
- Daniel Bailey, SRCS Business Manager
- Mrs. Marilyn Dodge, Recording Secretary
- Joseph Salas
- Peter Tormos

Demographics

FY24, All Valid Enrollments

Race/Ethnicity	Students	Percent	Other Demographics	Students	Percent
Asian	Masked	Masked	Economically Disadvantaged	338	54.1%
Black			English Learners	36	5.8%
Caucasian	19	3.0%	Female	309	49.4%
Hispanic	596	95.4%	Homeless and Foster	24	3.8%
Multirace	Masked	Masked	Male	316	50.6%
Native American	Masked	Masked	Migrant		
Pacific Island			Students with Disabilities	112	17.9%

Source: PED

Source: PED

Note: Small subgroups of students masked to protect student privacy. Demographic counts include all student enrollments, potentially including students who may have disenrolled during the school year.

Teacher Compensation by License Level

FY23

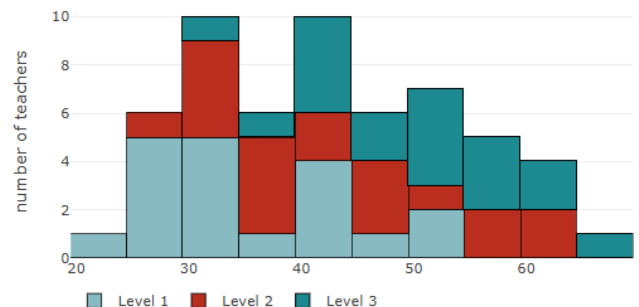
Level	Average Salary - SANTA ROSA	Average Salary - Statewide	Percent Difference
Level 1	\$54,486	\$54,028	0.8%
Level 2	\$61,028	\$62,987	-3.1%
Level 3	\$73,214	\$72,998	0.3%
Overall	\$62,725	\$64,614	-2.9%

Source: LESG Analysis of PED Data

Teacher Qualifications

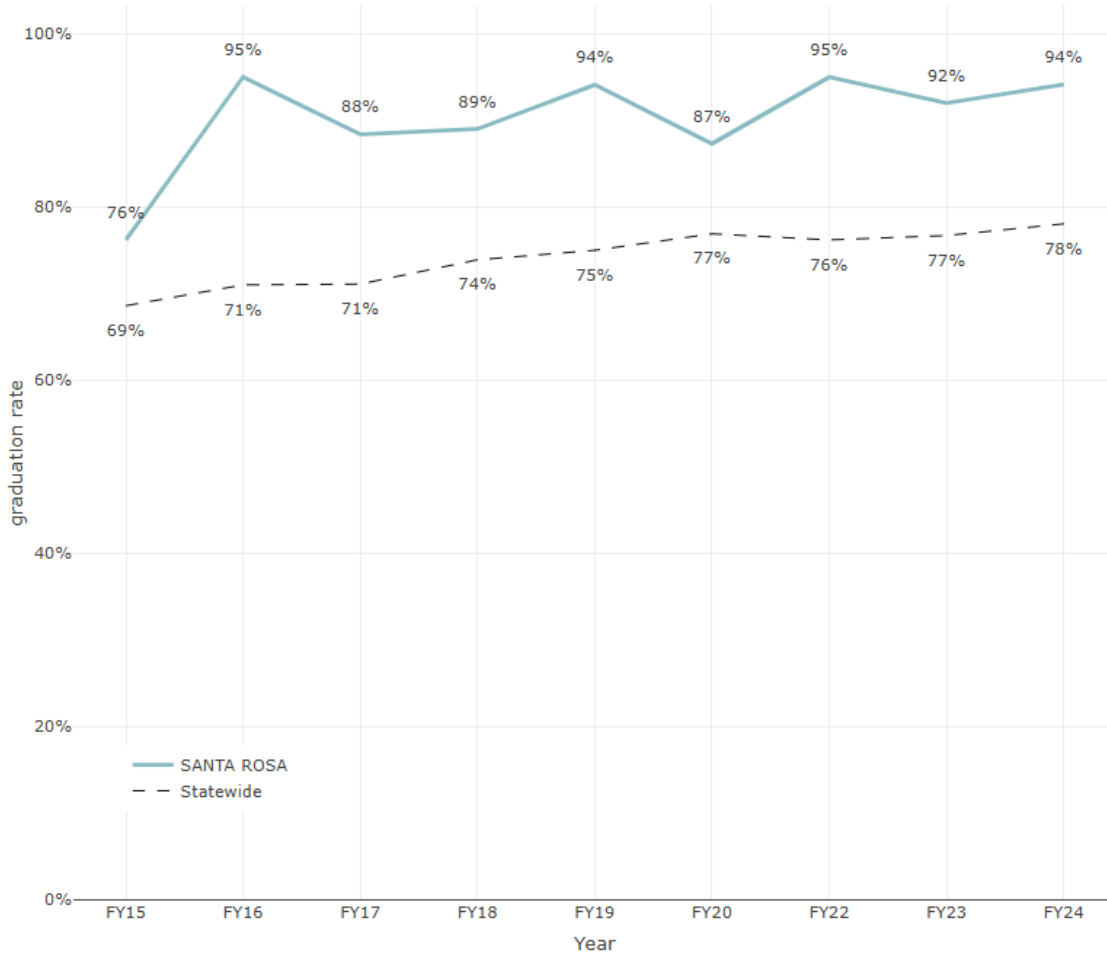
Number of Teachers by Age and License Level

FY23



Graduation Rate Over Time

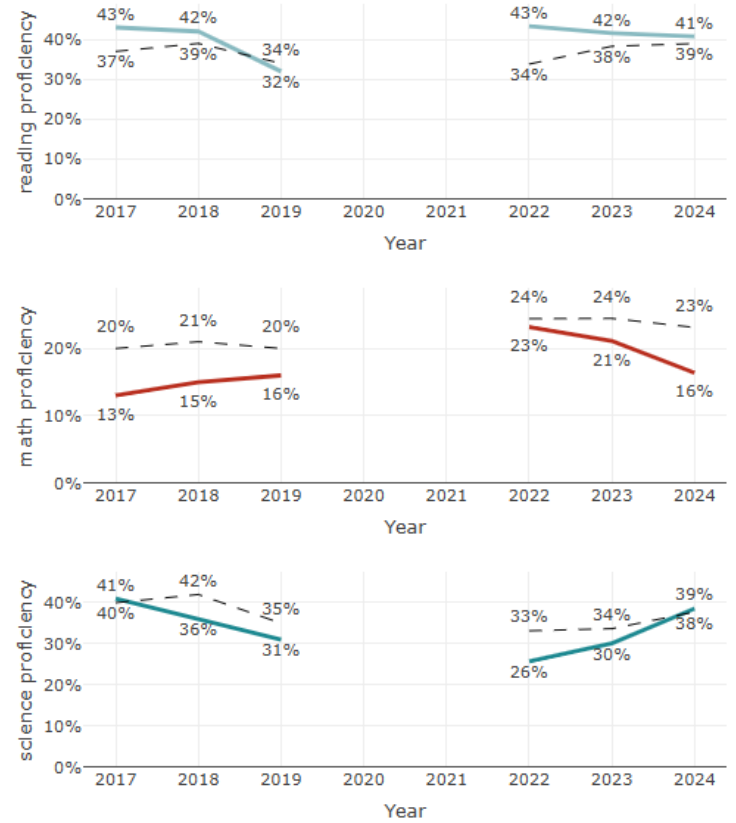
Four-Year Cohort



Source: LESC Analysis of PED Data

Proficiency Rates

Grade Levels: All Grades (3-11)



Source: PED and LESC Files

Data may not be available for all years or all grade levels. To protect student privacy, PED only reports data for students in cohorts of 10 students or greater.

During the Covid-19 pandemic, students were not assessed. New Mexico transitioned from the PARCC assessment in 2017 through 2019 to the NM-MSSA assessment in 2022. Pre- and post-pandemic assessment results are not directly comparable.

LESC School District Fact Sheet

West Las Vegas Municipal Schools

July 23, 2025

Prepared by: Arlo Menchaca



For more data, visit the
LESC District Dashboard

District Leadership

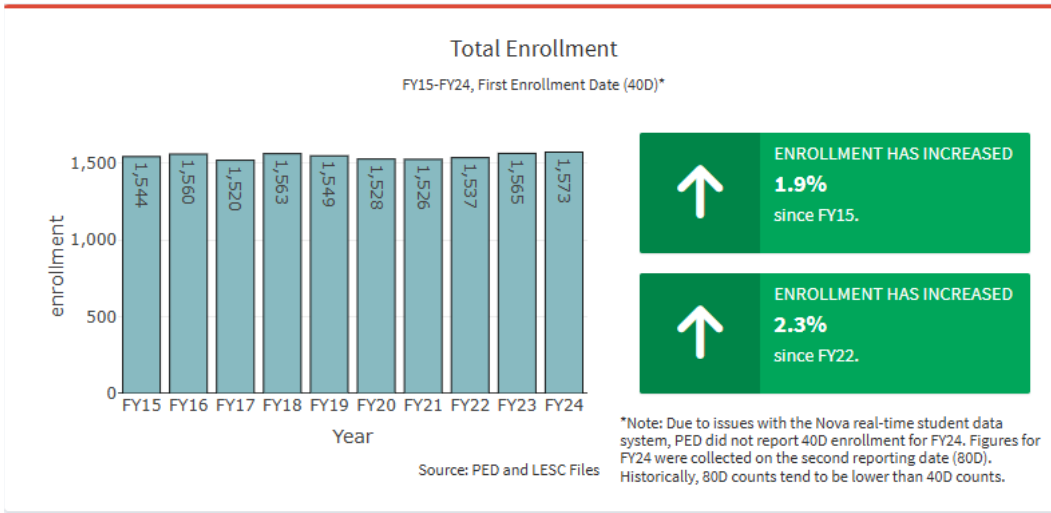
Christopher Gutierrez
Superintendent
(505) 426-2311
christopher_gutierrez@wlvs.org

Dr. Darice Balizan
Associate Superintendent
(505) 426-2328

James Bonney
Business Manager
(505) 426-2306

School Board:

- Rolando Medrano Jr., President
- Linda Montoya, Vice President
- Christine Ludi, Secretary
- Gabriel Salazar
- Christopher Lopez



Demographics

FY24, All Valid Enrollments

Race/Ethnicity	Students	Percent	Other Demographics	Students	Percent
Asian	Masked	Masked	Economically Disadvantaged	927	56.9%
Black	Masked	Masked	English Learners	78	4.8%
Caucasian	159	9.8%	Female	817	50.2%
Hispanic	1,434	88.1%	Homeless and Foster	49	3.0%
Multirace	Masked	Masked	Male	811	49.8%
Native American	Masked	Masked	Migrant		
Pacific Island			Students with Disabilities	248	15.2%

Source: PED

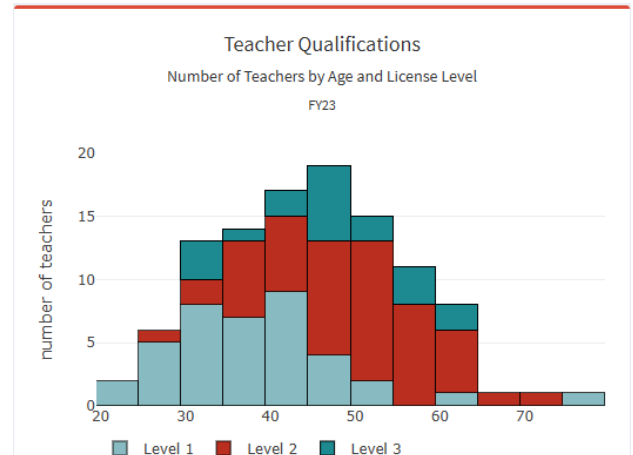
Note: Small subgroups of students masked to protect student privacy. Demographic counts include all student enrollments, potentially including students who may have disenrolled during the school year.

Teacher Compensation by License Level

FY23

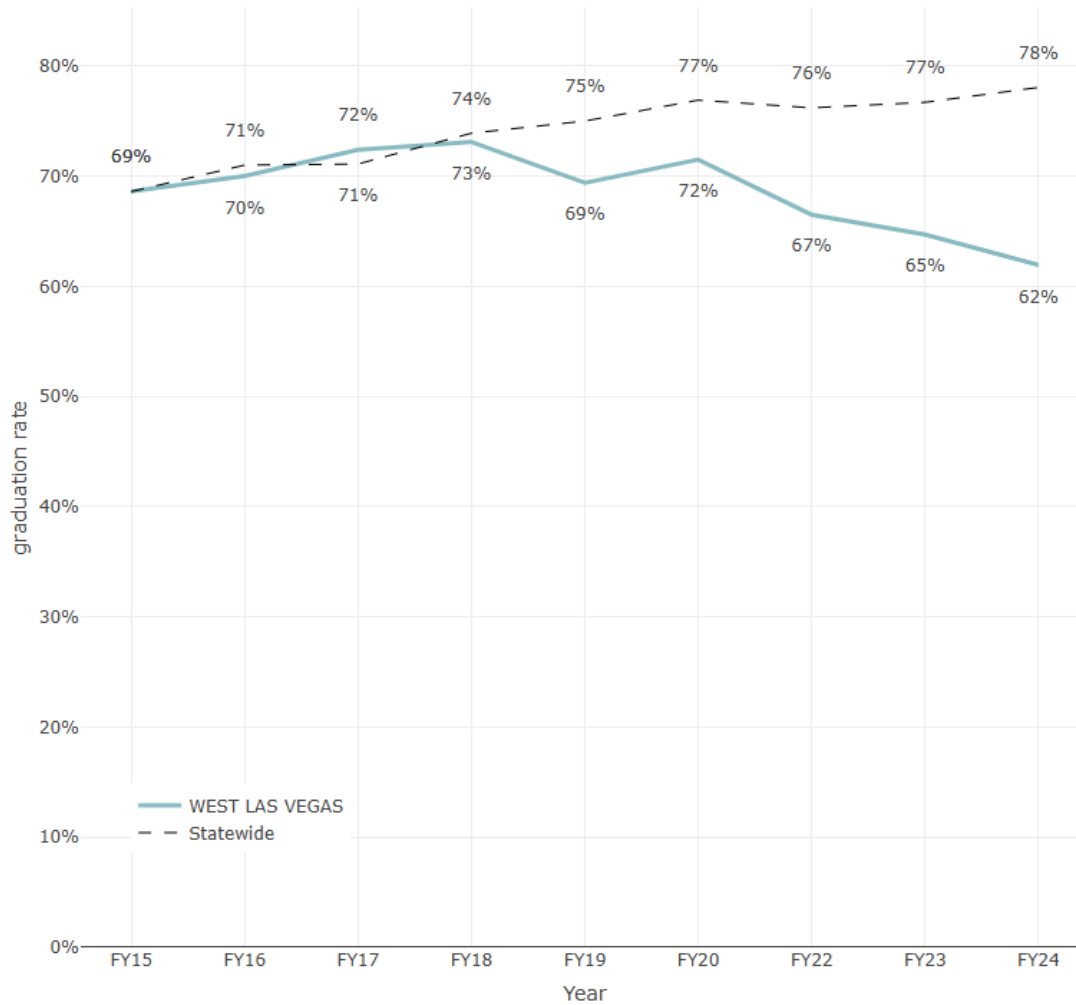
Level	Average Salary - WEST LAS VEGAS	Average Salary - Statewide	Percent Difference
Level 1	\$52,928	\$54,028	-2.0%
Level 2	\$62,228	\$62,987	-1.2%
Level 3	\$67,505	\$72,998	-7.5%
Overall	\$59,798	\$64,614	-7.5%

Source: LESG Analysis of PED Data



Graduation Rate Over Time

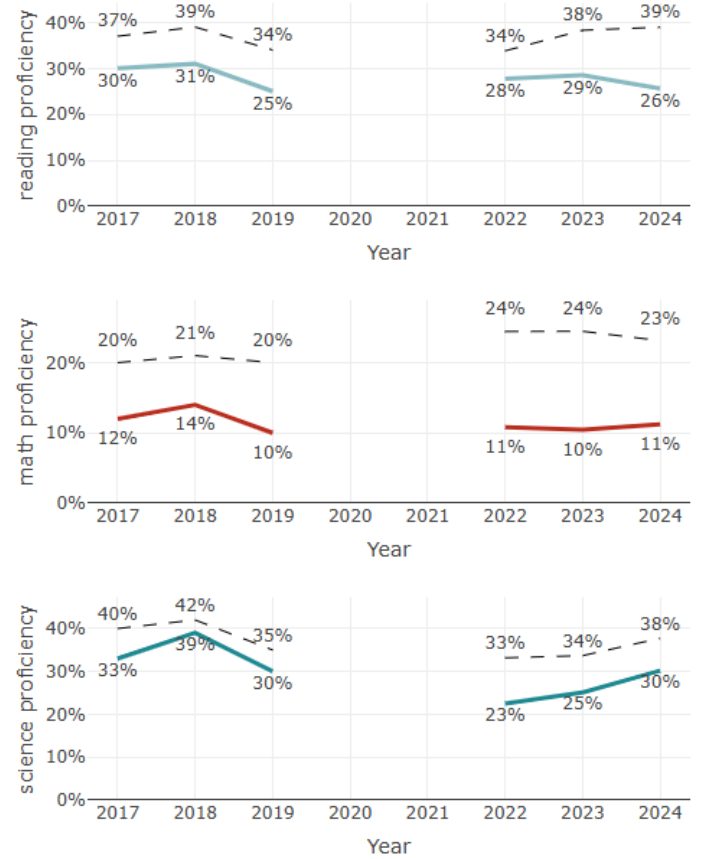
Four-Year Cohort



Source: LESC Analysis of PED Data

Proficiency Rates

Grade Levels: All Grades (3-11)



Source: PED and LESC Files

Data may not be available for all years or all grade levels. To protect student privacy, PED only reports data for students in cohorts of 10 students or greater.

During the Covid-19 pandemic, students were not assessed. New Mexico transitioned from the PARCC assessment in 2017 through 2019 to the NM-MSSA assessment in 2022. Pre- and post-pandemic assessment results are not directly comparable.