

# Las Cruces Public Schools

**Dr. Gregory Ewing, Superintendent**

Legislative Education Study Committee

May 16, 2018



LAS CRUCES  
PUBLIC SCHOOLS

# Welcome

---

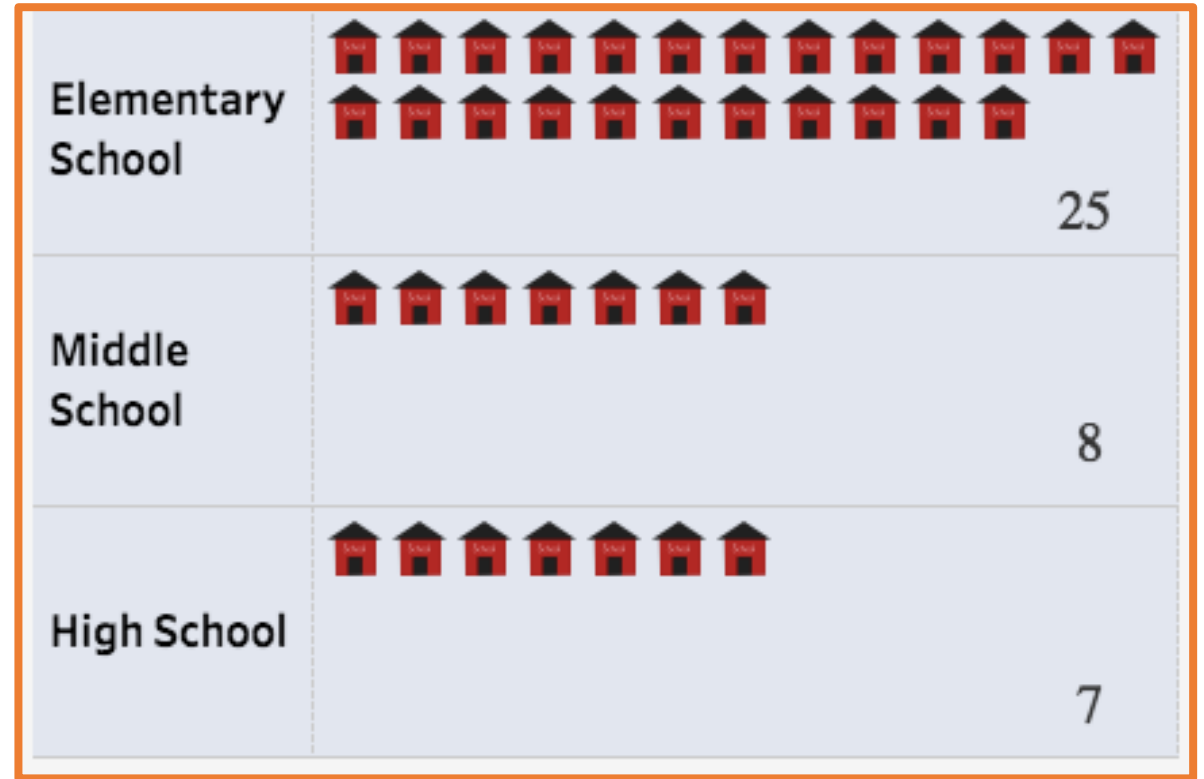
- Mimi Stewart (Chair)
- G. Andrés Romero (Vice-Chair)
- Alonzo Baldonado
- Craig Brandt
- Candace Gould
- Denise Roch
- Bill Soules
- Sheryl Williams Stapleton
- Christine Trujillo
- Monica Youngblood
- Carlos Cisneros
- Kelly Fajardo
- Joanne Ferrary
- Stephanie Garcia Richard
- Jimmie C. Hall
- Daniel A. Ivey-Soto
- D. Wonda Johnson
- Gay G. Kernan
- Tim Lewis
- Rick Little
- Linda Lopez
- Howie Morales
- Michael Padilla
- John Pinto
- Patricia Roybal Caballero
- Angelica Rubio
- Patricio Ruiloba
- Tomás Salazar
- Debra Sariñana
- Liz Thomson
- Jim Trujillo
- Linda Trujillo



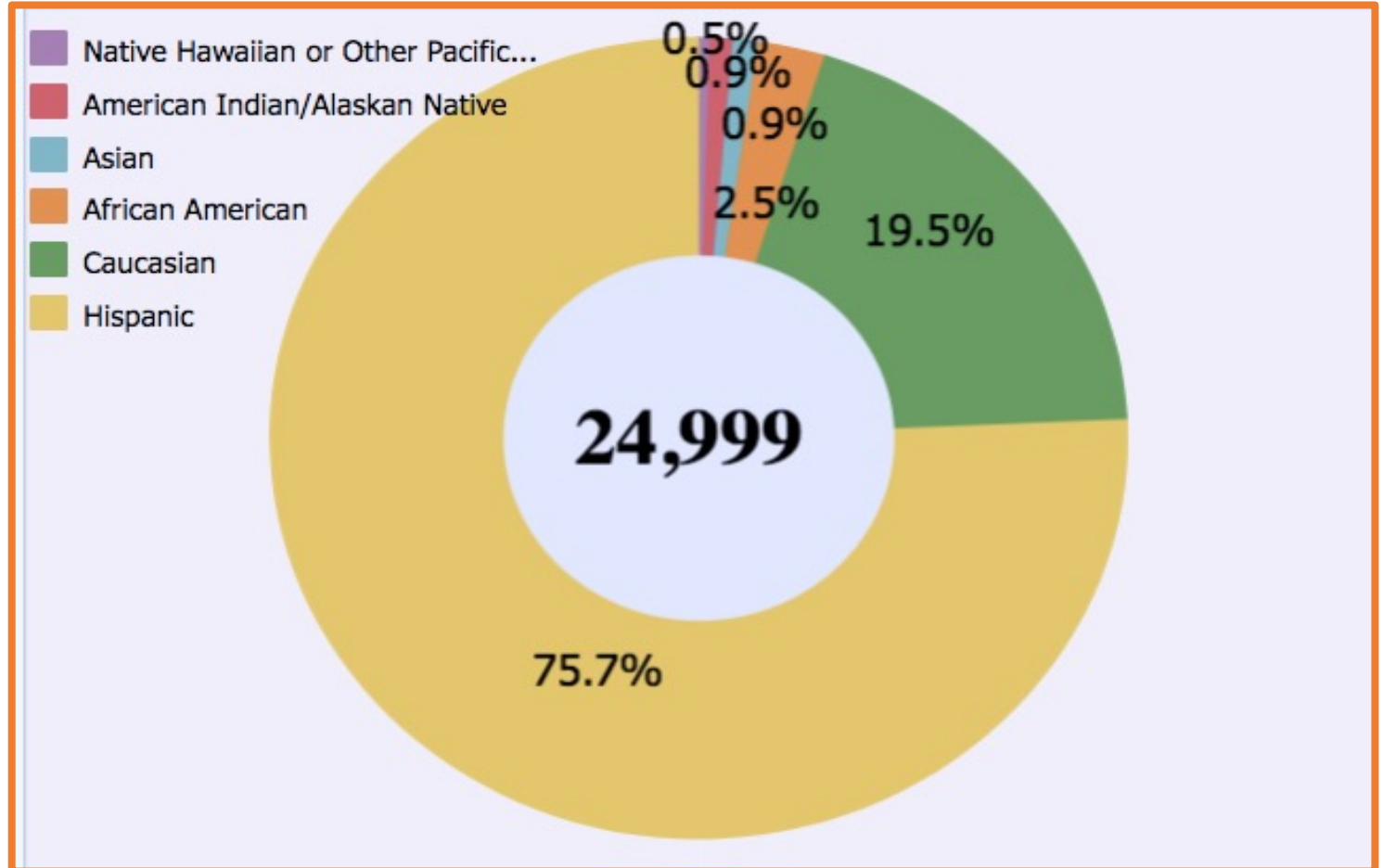
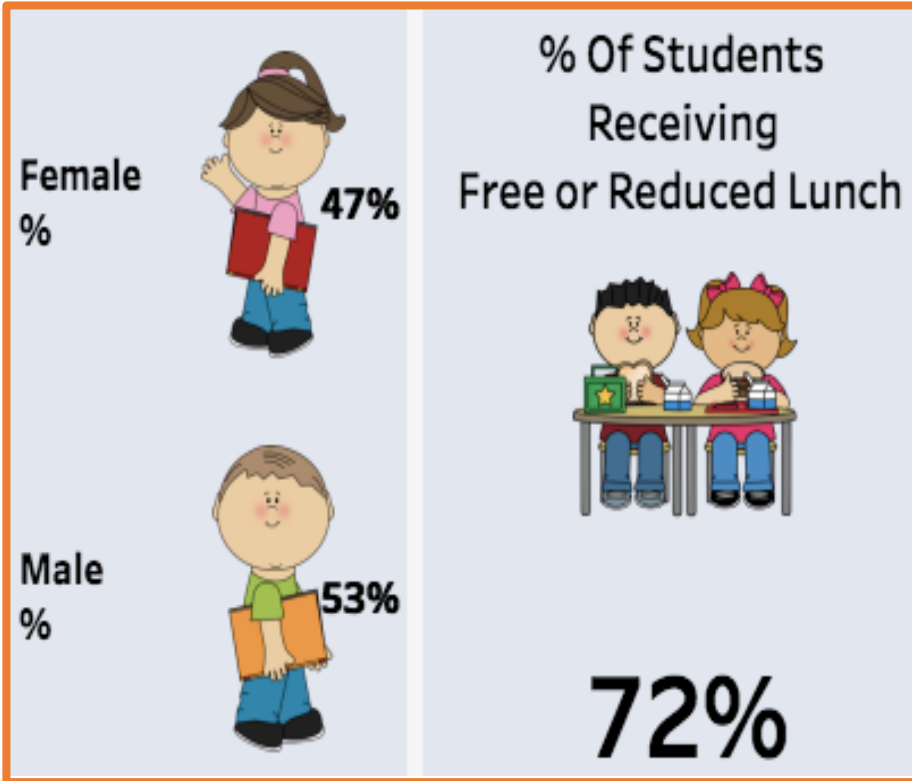
# District Characteristics

Total District Student  
Population:

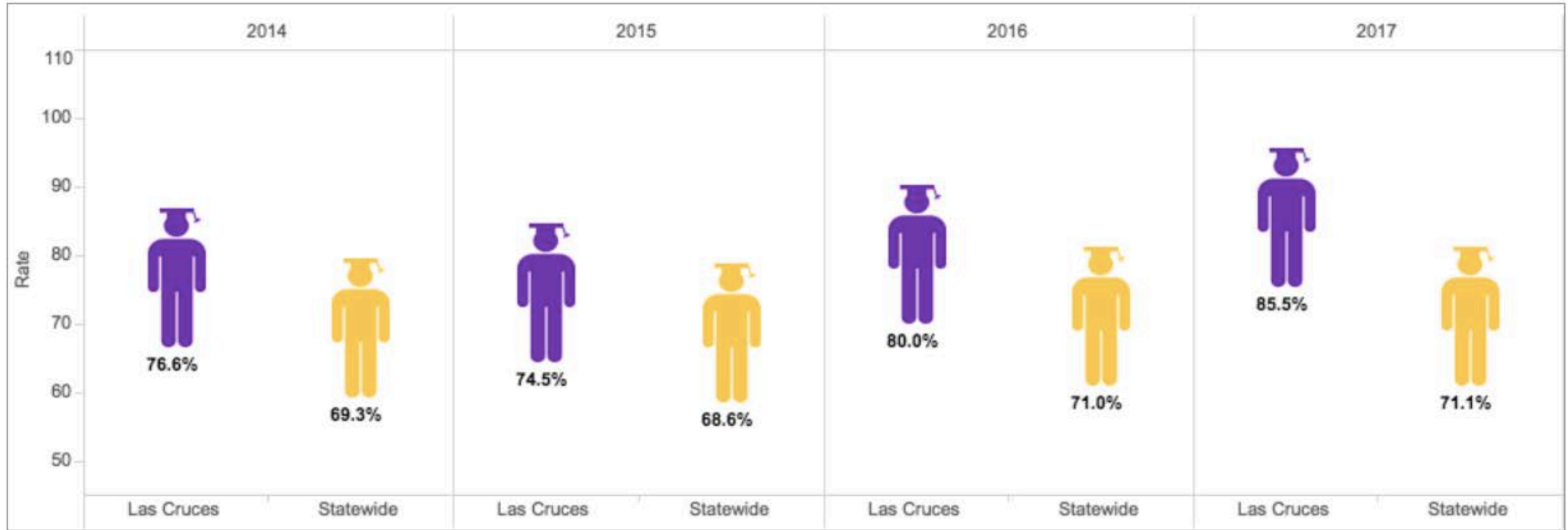
24,999



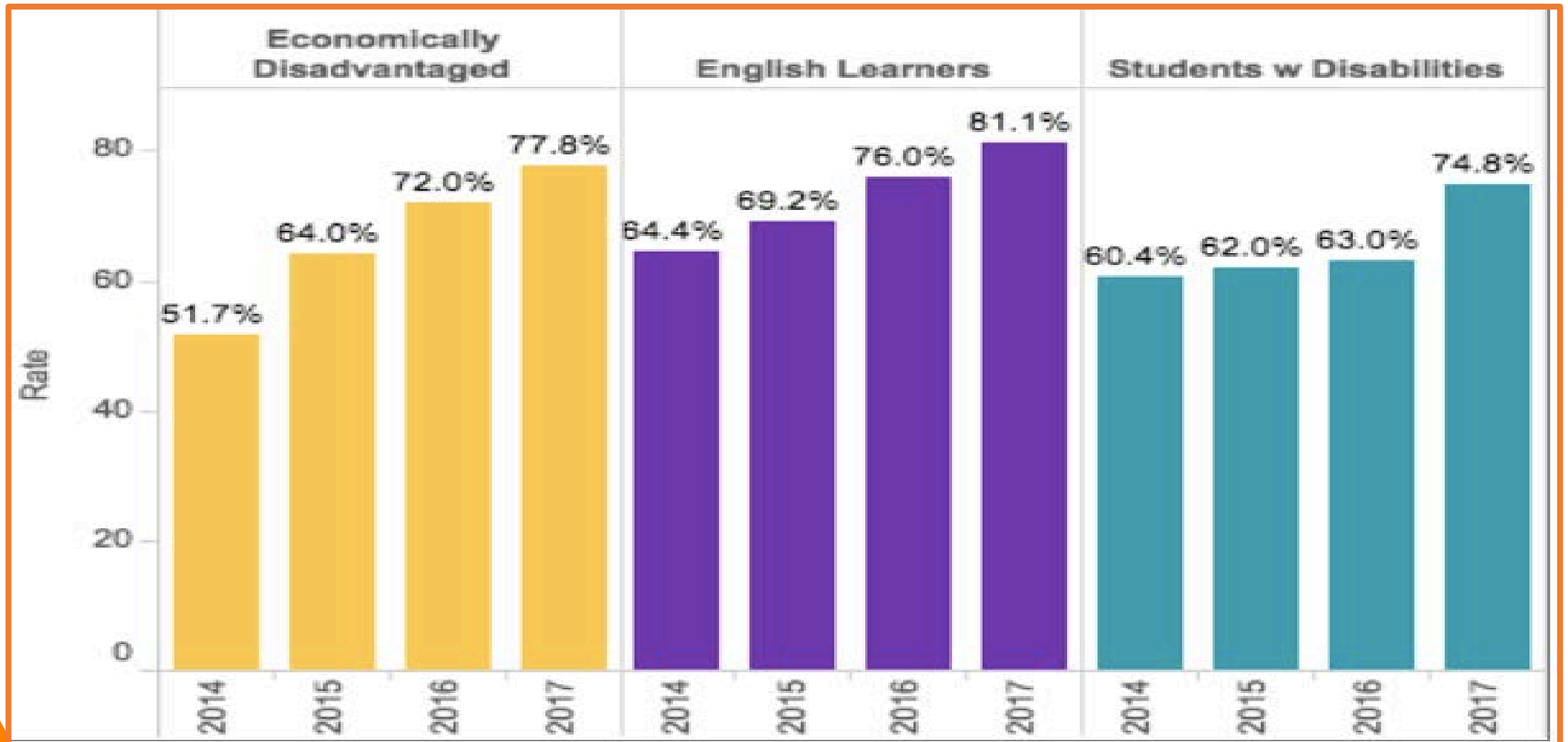
# District Characteristics



# Successes: Graduation Rate



# Successes: Subgroup Graduation Rates



# Successes

---

- Overwhelming community support for \$50 million school bond (89% in favor)
- Completion of major construction/renovation projects (LCHS, Hermosa Heights)
- Collaboration between different community entities (NMSU, City of Las Cruces)
- Student advisory council for school board



# Successes

---

- Development of new mathematics courses, including Transition to College Math, to improve student success at the post-secondary level (no remedial courses).
- State seal of Bilingualism/Biliteracy (77 students)
- 4 National Merit Finalists
- 7 National Hispanic Scholars





# Successes

---

- Challenger Learning Center of Las Cruces
- Athletic state recognitions:

Las Cruces High School Girls Swim Relay Team

Onate High School Cheer Team

Centennial High School - Boys Golf (Single - Nolan Gillihan)



# Challenges

---

- Safety and security
- Communication with Public Education Department
- Transportation costs
- Retention and recruitment of highly effective teachers and the increase of alternative licensure teachers
- Social emotional student needs (behavior)
- Addressing the academic needs of long-term English Learner students



# District Initiatives

---

- District community task force on school safety and security
- International Welcome Centers (4 advisors, expand to middle schools)
- Principal leadership development
- District wide SLOP implementation
- Restructuring of teacher induction & mentoring program



# District Initiatives

---

- Student mental health district support
- Implementation of comprehensive tiered system of behavior support
- Restorative practices
- Ethnic studies
- Collaboration with local university for professional development, teacher certification, and supplemental tutoring for ELs



# Thank You

---

- Salary increases for teachers and classified staff
- Continued support from state legislators
- Senator Bill Soules
- Meeting sponsors



