



NMCCEA
NEW MEXICO CHILD CARE AND EDUCATION ASSOCIATION



Legislative Education Study Committee

Toward a Consensus Vision for Early Childhood Development in New Mexico

Sondra Carpenter
President, NMCCEA
Quality & Support Director,
Noah's Arc

Terry Anderson
Past President, NMAEYC
WNMU ECP Assistant Dean (retired)
CPC Executive Director/Project Coordinator

December 13, 2018



Toward a Consensus Vision on ECE

It's an exciting time in New Mexico

- 2018 saw several important reports released toward a new vision for early childhood development
- It's time to reframe the discussion
- Set a course of action toward a unified vision
- Support both working families and our youngest children
- New Governor & State Legislature
- It's time to roll up our sleeves



Full Report: Toward a Consensus Vision for Early Childhood Development

<https://bit.ly/2Gb3y0D>

Toward a Consensus Vision on ECE

Supporters of our vision report include:

- New Mexico Child Care Education Association (NMCCEA)
- New Mexico Association for the Education of Young Children (NMAEYC)
- Southern New Mexico Early Childhood Alliance
- Montessori Network of New Mexico
- Businesses, Educators, & Families Organizing to Reform Education (BEFORE)
- Western New Mexico University (WNMU) Early Childhood Programs
- New Mexico Early Childhood Council



Executive Summary: Toward a Consensus Vision for Early Childhood Development

<https://bit.ly/2Pv37gY>

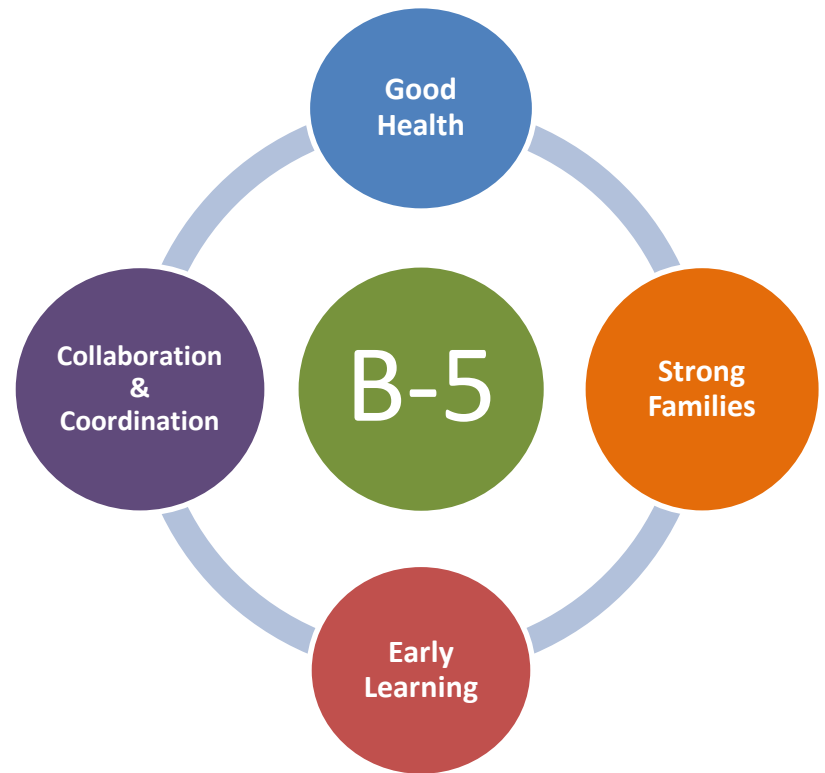
Strong Coordination Needs Clear Leadership

Strong coordination & clear and focused leadership from an Executive between all departments that govern ECE

- One person in charge, not fragmented leadership across agencies

Connect the overall state vision to the impact on the ground

- Require local coordinating councils to conduct an annual landscape review: child care, Head Start, publicly funded Pre-K, and home visiting
- Impact analysis
- Strategic discussion, not check the box effort



New Mexico Young Children

Under Age 3: 75,820

Children Under 6 Below 200% of Poverty: **84,002**

Under Age 6: 154,455

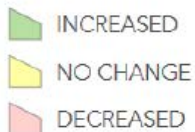
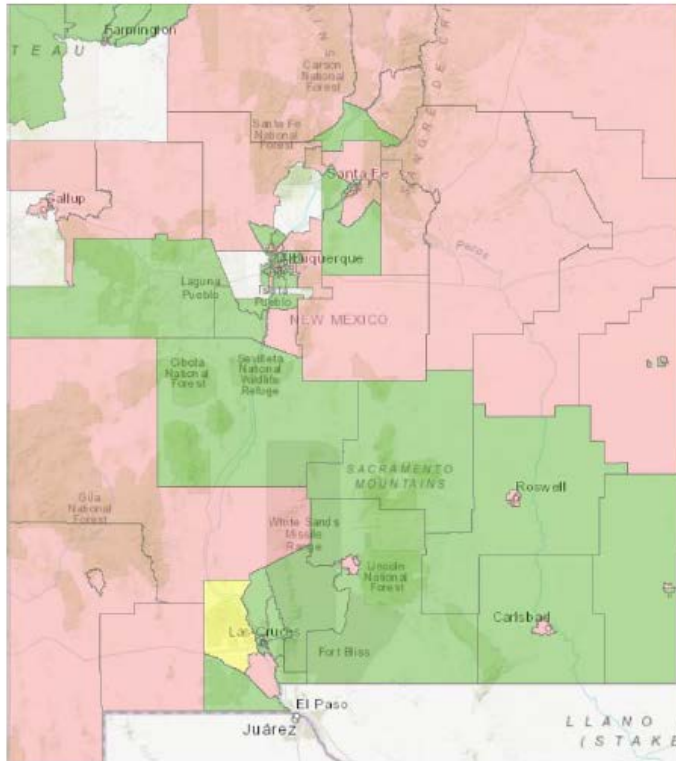
Children Under 6 Below 150% of Poverty: **67,534**

Under Age 6 with working parents: 88,322

Source: U.S. Census Bureau, 2017 American Community Survey 1 Year Estimates

Trends in Child Care Program Capacity

Trends in Child Care Program Capacity, 2010-2018



Source: Licensed Child Care Provider Sites, 2015-2017 Overview Data Visualization, New Mexico Community Data Collaborative (NMCDC)

Lessons Learned from other States

- In Oklahoma, since 2005, 43% of all licensed child care programs have closed.
- A Tulsa World analysis found that costs for child care have increased 33% overall and 55% for infants and toddlers within the past decade.

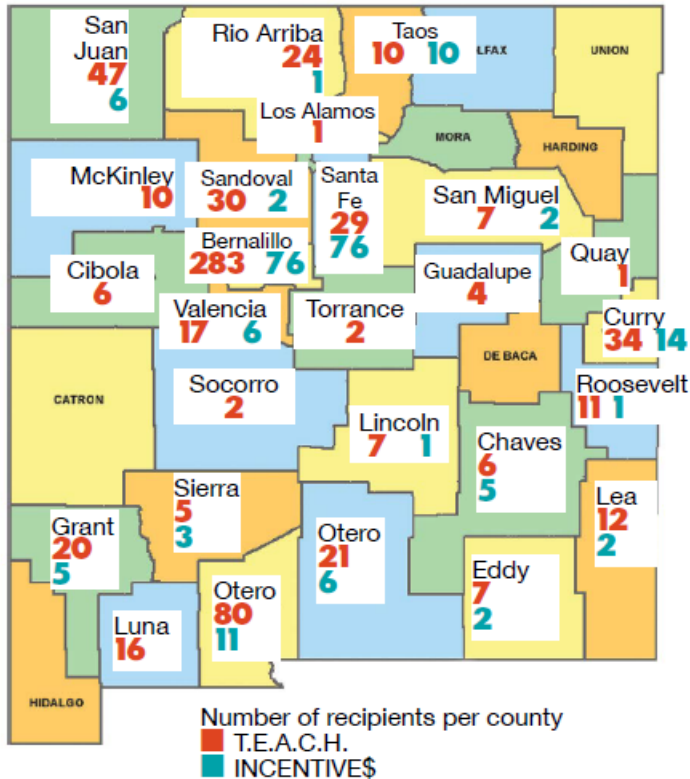
What Economists Say

“Pre-K initiatives that lack strong ties to the child care industry can lead to higher child care costs, reduced employment and lower lifetime earnings for parents with young children.”

Lori Taylor
Director of Mosbacher Institute for Trade, Economics, and Public Policy
Bush School of Governance and Public Service
Texas A&M University

Sources: 9 Investigates: State Of Oklahoma Seeing Decline In Daycares, October 2017. <http://www.news9.com/story/36567450/9-investigates-state-of-oklahoma-seeing-decline-in-daycares>; <http://www.campfirefw.org/amsite/media/universal-pre-k-impact-study.pdf>

Talent Development: Building a High-Quality Early Learning Workforce



Recommendations:

- Need a current ECE workforce survey (including levels of education & compensation)
- Strategies to incent professional development linked to wage increases
- T.E.A.C.H. Scholarships and INCENTIVE\$ to boost wages

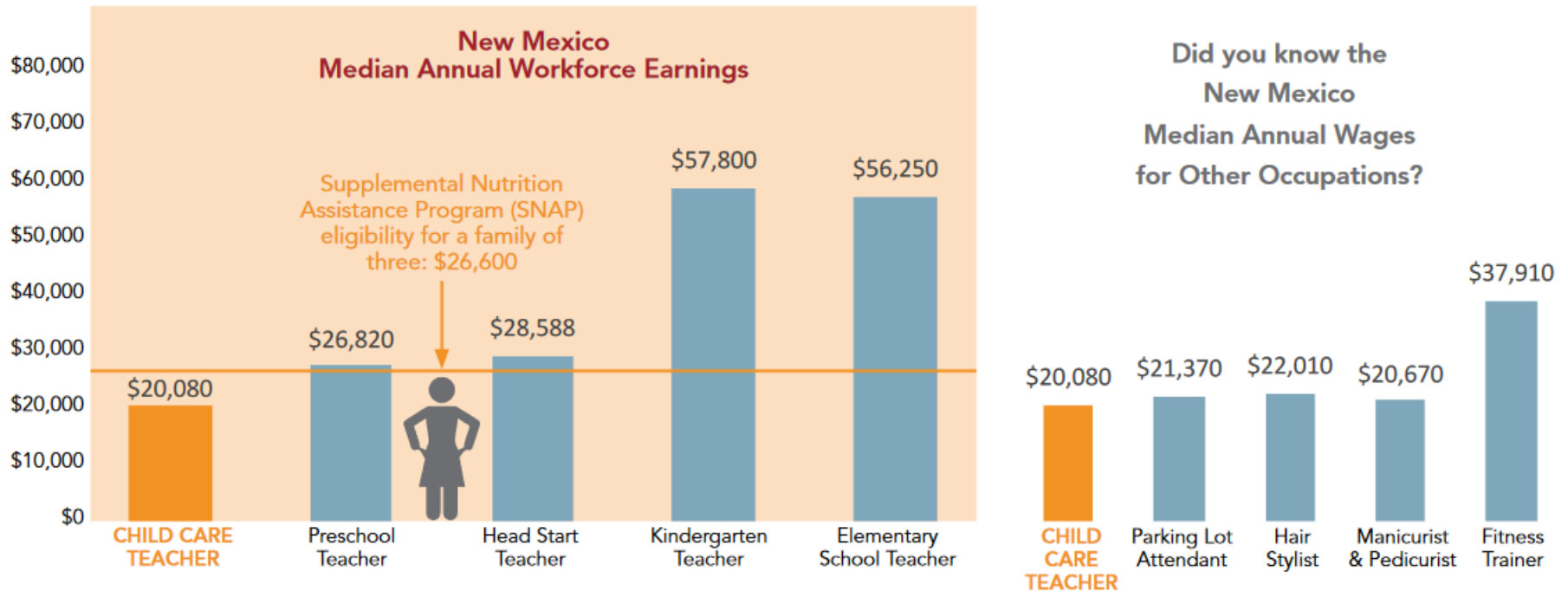
A 2015 report found:

- 41% of the ECE workforce had a high school degree or less
- 32% had some college but less than an AA
- 11% had an AA, 13% had a BA, 4% have some other graduate degree

Source: 2015 Early Childhood Comprehensive Needs and Cost Analysis by the Center for Health Policy at the University of New Mexico

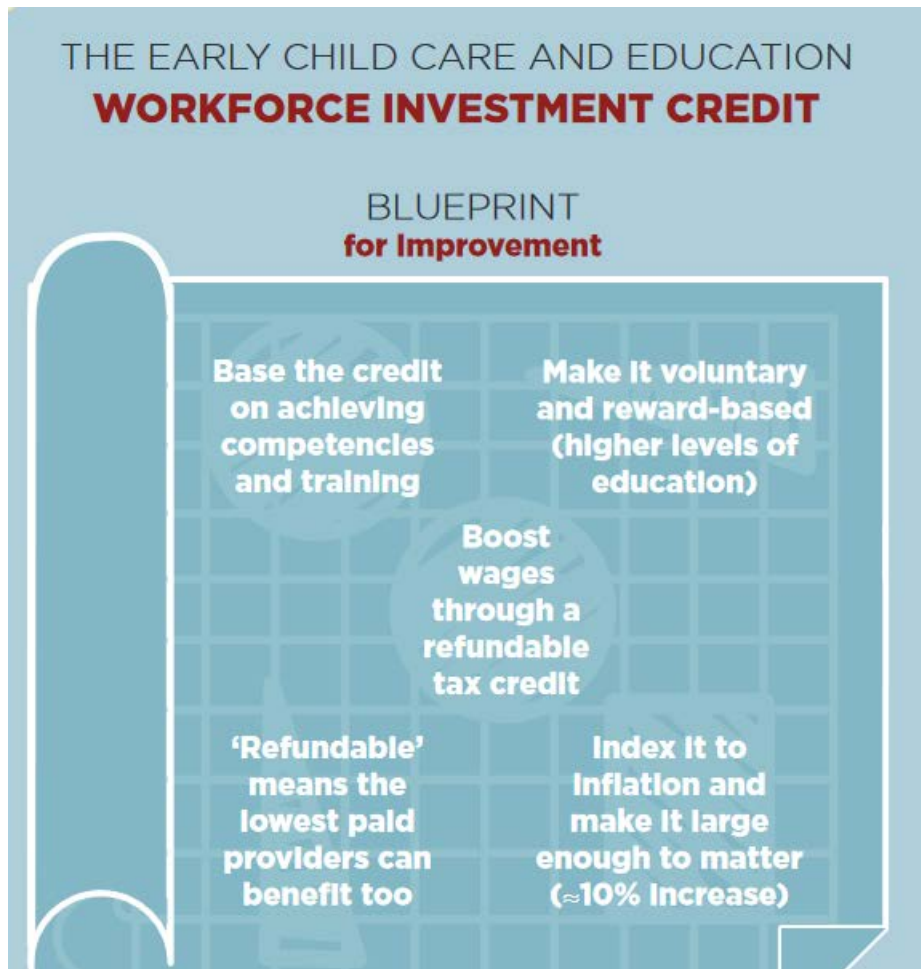
ECE Teacher Pay vs Other Jobs

Needed: strategies that link incentives for higher education with pay increases

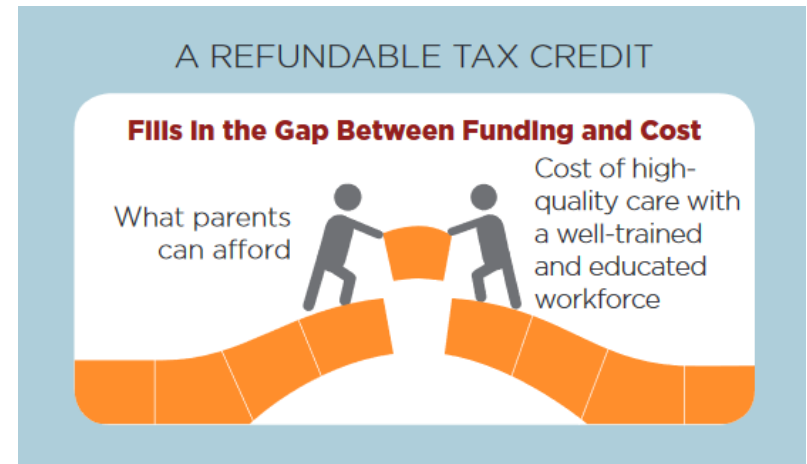


Source: Committee for Economic Development, Pathways to High-Quality Child Care (2017). <https://www.ced.org/reports/early-learning/pathways-to-high-quality-child-care>
 Wage data is from the U.S. Bureau of Labor Statistics (BLS), May 2017 occupational wages by state

Tax Credits for FOCUS Participation & Workforce Development



Source: Committee for Economic Development, Pathways to High-Quality Child Care (2017). <https://www.ced.org/reports/early-learning/pathways-to-high-quality-child-care>



ECE Workforce Credit

- Based on a refundable credit in Louisiana
- Provides an incentive for higher education
- Rewards education levels achieved with a boost in income

Source: CED August 2017; <https://www.ced.org/reports/pathways-to-high-quality-child-care>

Public Pre-K (Pay Parity and Credentials)

Child Care Pre-K Credentials & Pay

- Design a supplement system to support credential & pay parity between pre-k in child care settings and pre-k in public schools

In Mecklenburg County, NC

- Public pre-k teachers are required to have a BA and teacher licensure (B-K)

Teachers receive a monthly supplement:

- Parity with public schools
- \$375 per month for health insurance
- 3% for retirement
- \$10 for life insurance



Source: Creating Opportunity: An Action Plan for Early Childhood Education,
<https://www.mecknc.gov/news/Documents/ECE%20Full%20Report%20Creating%20Opportunities%20FINAL%20Sept%2026%202017%20%281%29.pdf>

Grow the Expansion of Child Care Support

Grow Early Childhood Services

- Gradually double the percentage of eligible children under age 5 who receive child care AND support them in 4 and 5 star settings
- Inventory and map licensed child care programs, Head Start, and public pre-k – identify the ages of children served, number of children served, and number compared to eligible children
- Review reversion of home visiting funds to better understand and prevent future reversions



Thoughts? Discussion?

