

A modern, multi-story building with a prominent red and orange facade and large glass windows. The building is set against a clear blue sky with some light clouds. The architecture is contemporary with sharp angles and a mix of materials.

LEGISLATIVE HEALTH & HUMAN SERVICES COMMITTEE

OCTOBER, 6 2025

UNM COMPREHENSIVE CANCER CENTER

YOLANDA SANCHEZ, PHD

DIRECTOR AND CEO

VISION and MISSION

UNMCCC's vision is to continuously drive discovery and innovation for better cancer prevention, diagnostics, treatments and patient-centered care.

Discovering the Cures, Elevating Every Life.



The mission of the UNMCCC is to reduce the cancer burden and overcome the differences in cancer risk, incidence, and outcomes in the people of New Mexico and beyond through:

- *Ground-breaking transdisciplinary research*
- *Translation of discoveries to clinical and community interventions*
- *Impactful and respectful bi-directional community engagement*
- *Education, and training of the cancer workforce and leadership of tomorrow*
- *The delivery of exceptional patient-centered cancer care*

UNMCCC Cancer Center History



UNM Cancer Research Facility



UNM Cancer Center Clinical Facility
(\$140M; State, Institutional, Philanthropic Funds)



NCI Comprehensive Cancer Center Designation



2nd Clinical Facility Expansion
(\$60 M; Radiation Oncology, Theranostics, GMP Laboratories: Isotopes, Immunotherapy)



NCI Comprehensive Cancer Center Designation Renewal



NCI P20 CCSG Planning Grant



NCI Cancer Center Designation
NCI P30 CCSG

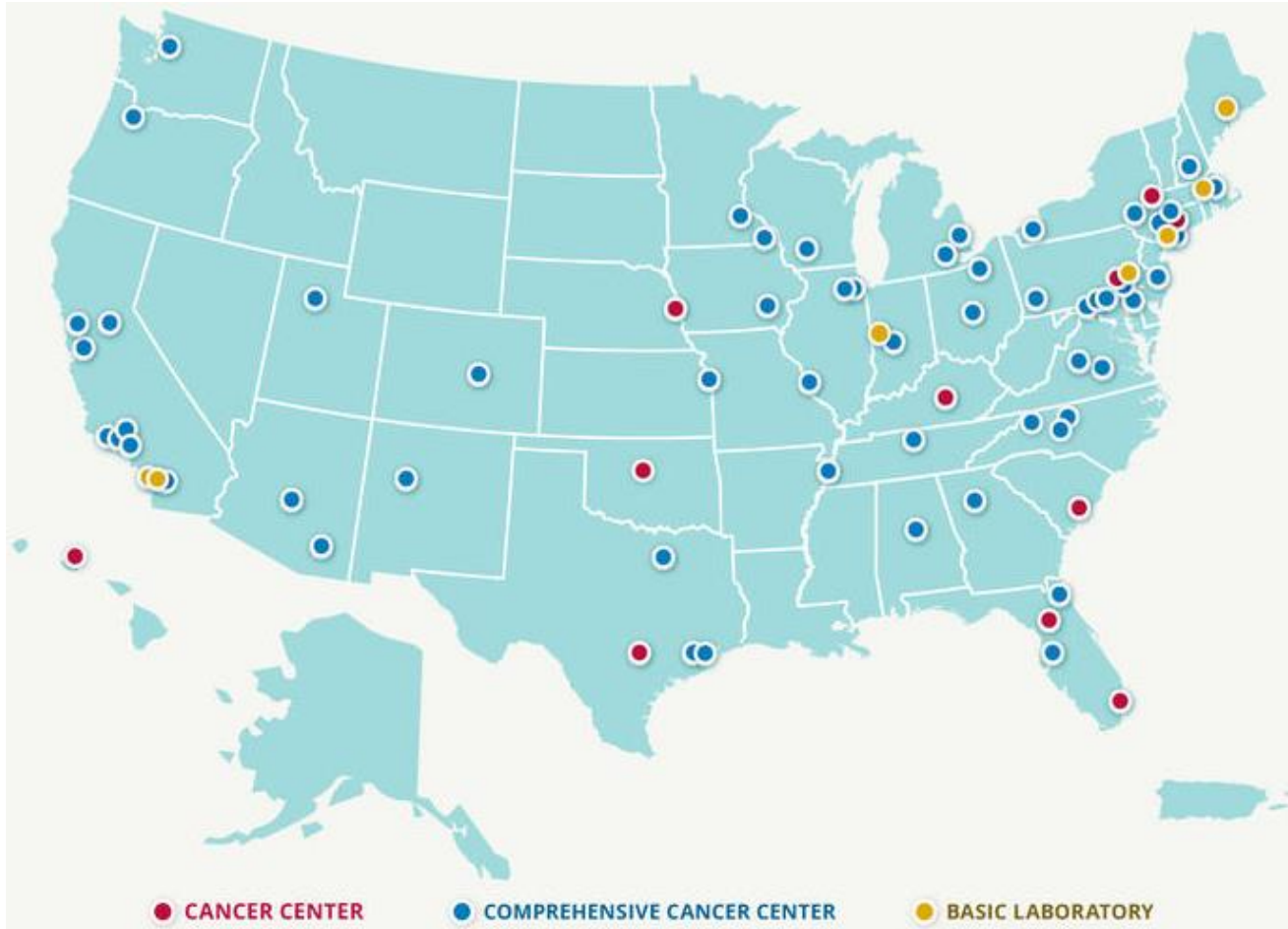


New CEO and Director



UNM Comprehensive Cancer Center

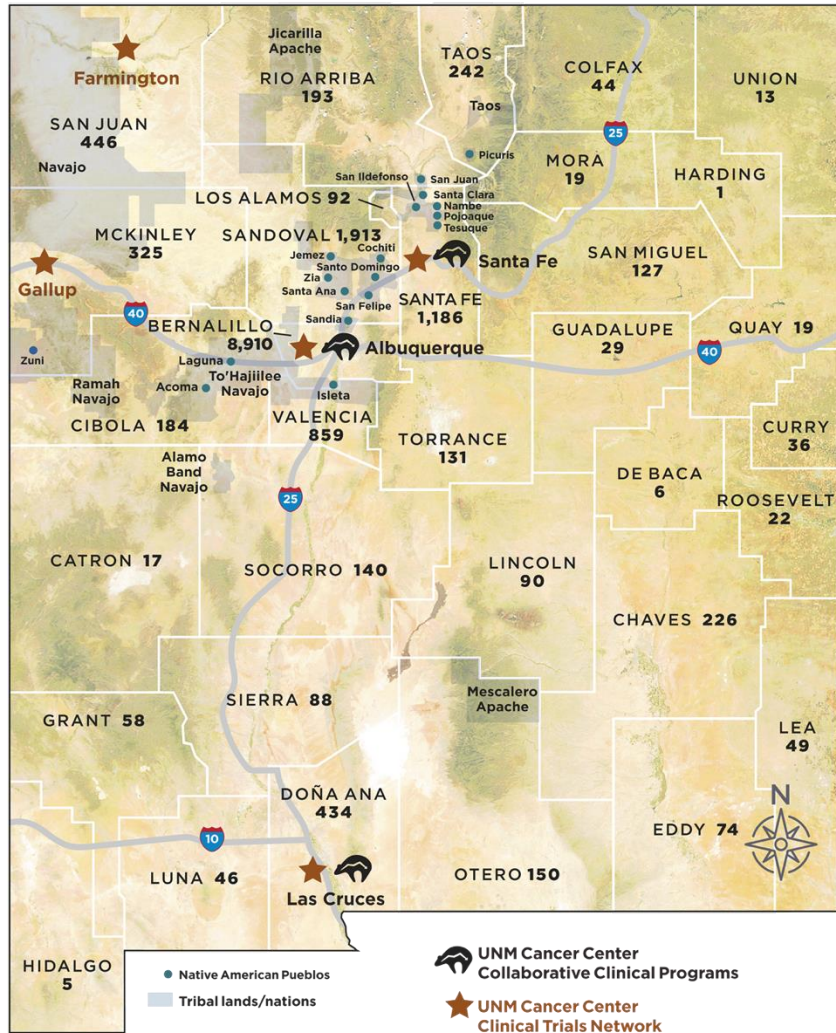
One of 57 NCI-designated Comprehensive Cancer Centers



74 NCI Cancer Centers

- Top 3% of Cancer Centers in the Nation
- 36 States
- Core of NCI Extramural Research
Mission: >80% Extramural Budget
- Discovery science engine and translation to clinical trials and interventions.
- Deeply engage communities and build community networks
- Train the nation's cancer workforce

UNM Comprehensive Cancer Center Differentiators



- UNMCCC serves a **unique catchment area** with multiethnic populations through respectful, bidirectional engagement and communication.
- The **New Mexico Cancer Research Alliance** provides a partnership with community-based health systems and oncology providers. The NMCRA, a 501(c)(3) collaborative network established by UNMCCC in 2003, is funded as an NCI Community Oncology Research Program (NCORP; 2UG1CA189856-06; PI Muller).
- Partner **Lovelace Biomedical Research Institute** with complementary lung cancer prevention, screening and treatment, as well as tobacco and e-cigarette research.
- **Project ECHO** a tele-mentoring platform developed at UNM and used world-wide is used by UNMCCC to improve cancer patient outcomes through education, training and care management.

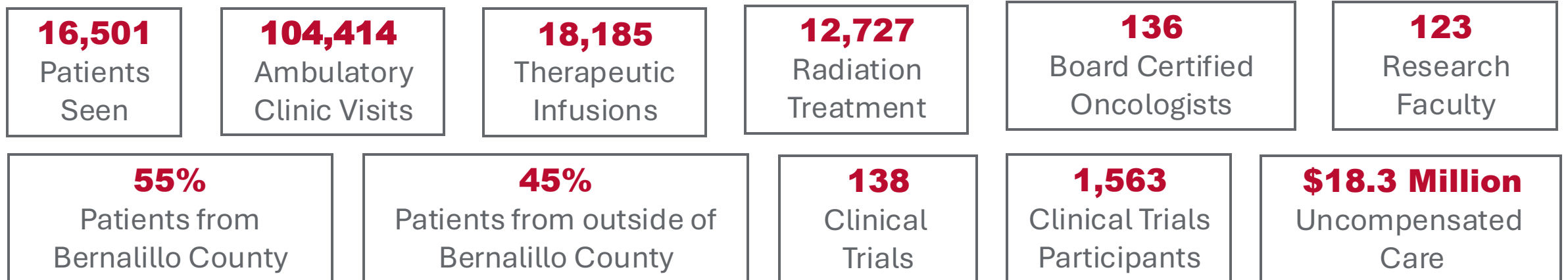
Patients Treated in Fiscal Year 2024	In State: 16,179	Out of State: 322	Total: 16,501
---	------------------	-------------------	----------------------



What Makes the UNM Comprehensive Cancer Center Unique

- The Official Cancer Center of the state of New Mexico
- The only cancer center in New Mexico to hold the NCI Comprehensive Cancer Center designation, delivering cancer treatment not available elsewhere within a 500-mile radius.
- Conducts cutting-edge cancer research and translates discoveries to interventions
- Our patients receive state-of-the-art care all in one place: expert multi-disciplinary treatment planning; access to novel clinical trials; and personalized treatment.

UNM Cancer Center by the Numbers (2024)

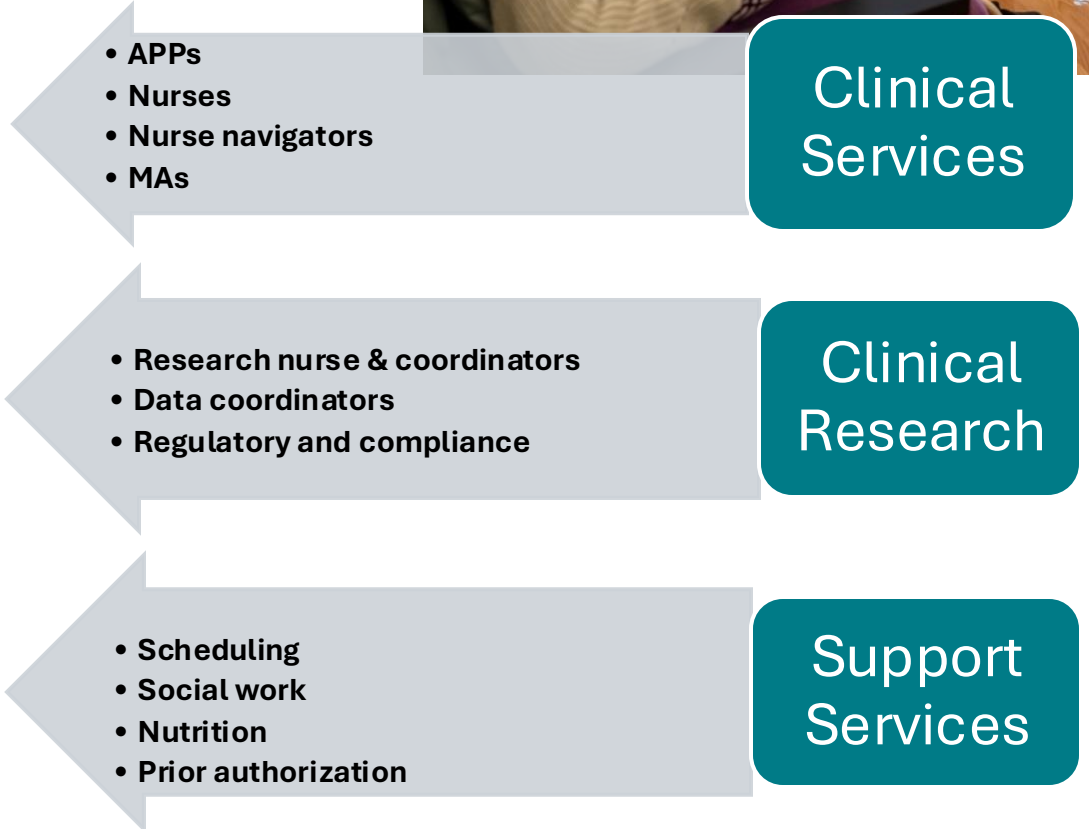
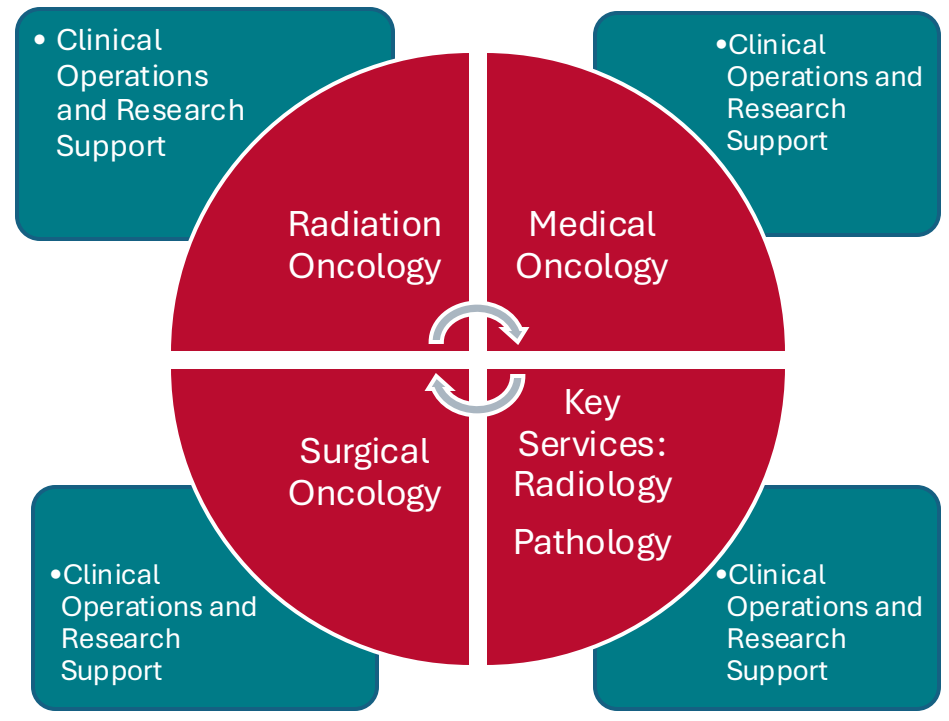
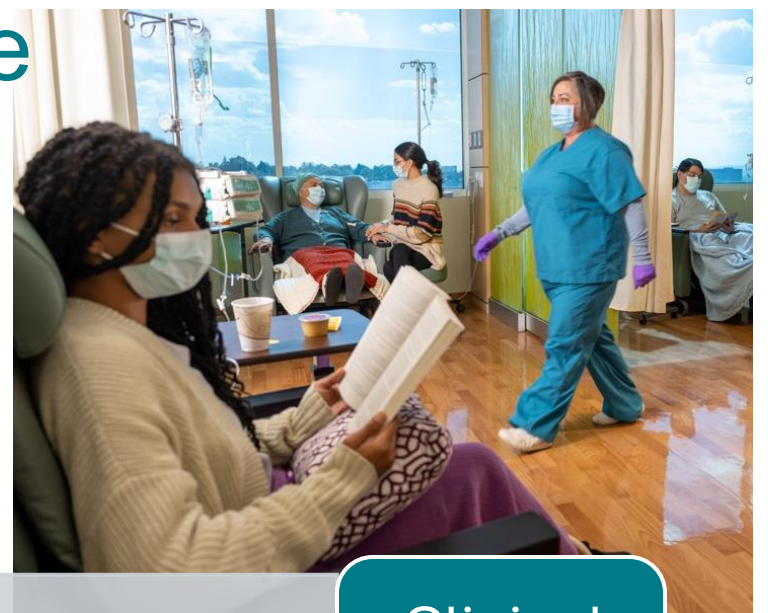


UNMCCC: Multidisciplinary Patient Care

Clinical Working Group (CWG) by disease site

- Breast
- Head & Neck
- GI
- GYN ONC
- GU

- Lung
- Heme and BMT
- Melanoma/Sarcoma
- Pediatric Oncology
- Community Oncology



Building for the Future

Expansion of Clinical Research and Treatment Space at the UNMCCC, 50,000 sq ft.

Space for state-of-the-art radiation oncology technologies and procedures,
including the only MRI-Linac in NM

Expansion of Theranostics

Growth of the only Bone Marrow/Stem

Cell Transplantation accredited

program in NM

- 20 bed wing at UNMH for Medical Oncology and cell-based therapies

Expansion of clinical research and
workforce training programs

Groundbreaking December 14, 2023



Building for the Future



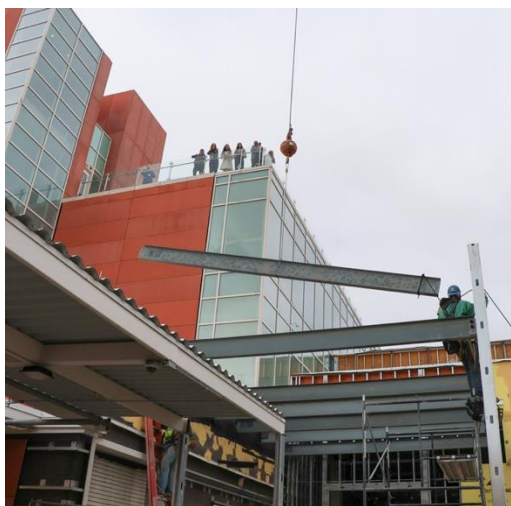
- Expanded radiation oncology services with advanced image-guided radiation therapy and Stereotactic RadioSurgery (SRS) capabilities:
- State-of-the-art Magnetic Resonance Linear Accelerator (MR LINAC).
- Features the latest image-guided radiotherapy for real-time imaging of patient tumors while simultaneously undergoing active treatment.
- Technology supports future advancements with Artificial Intelligence (AI) and incorporation of machine learning algorithms to provide adaptive treatments that minimizes side effects while maximizing clinical efficacy.
- Only one of its type in New Mexico. New platform for training and clinical research.

Building for the Future

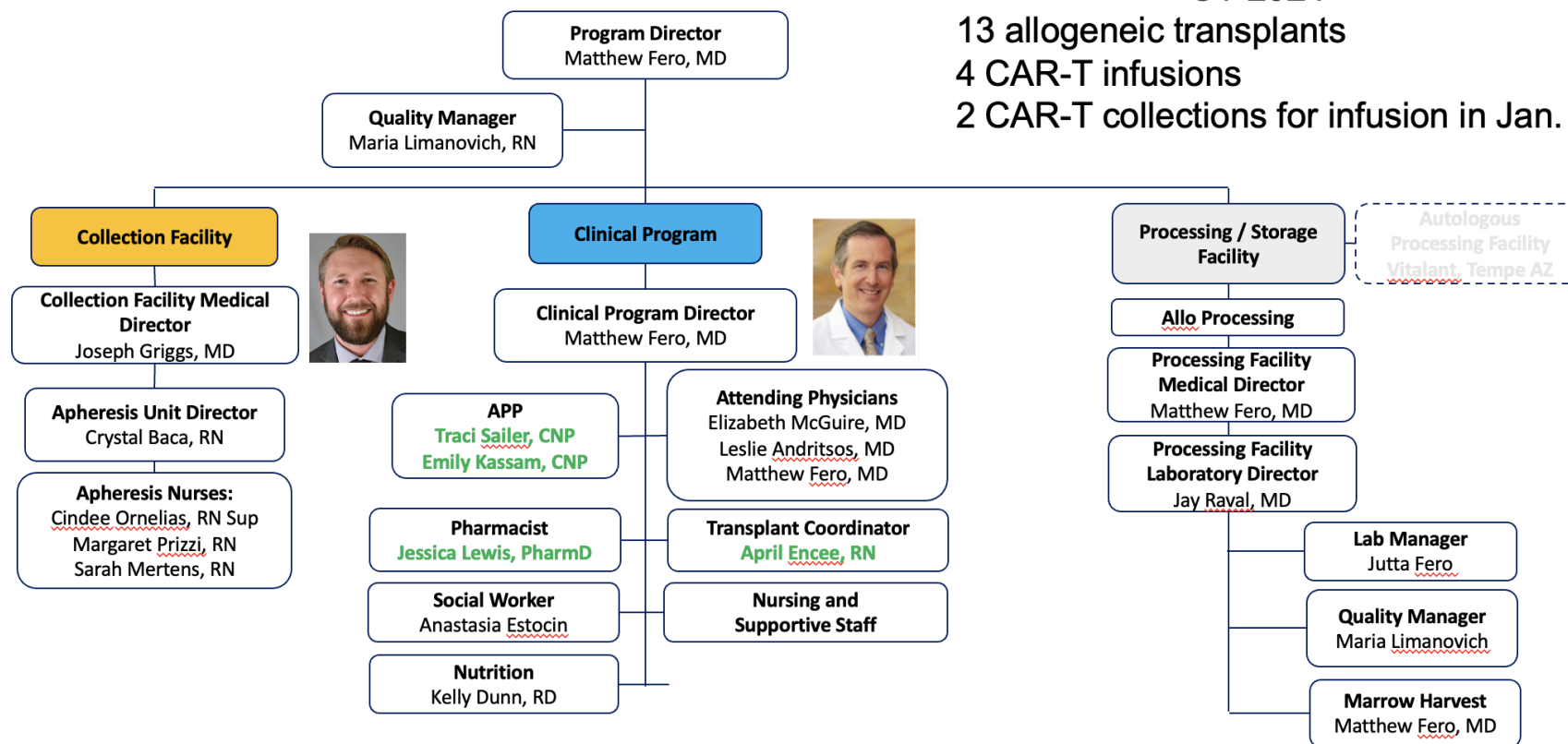
- The newly-installed Versa HD can be used to perform intensity modulated radiation therapy, stereotactic body radiation therapy and stereotactic radiosurgery for a wide variety of tumor types, a noninvasive procedure that delivers high dose radiation to a tumor but a much lower dose to surrounding tissues, thus killing tumor cells but sparing the nearby cells.
- The plan is to have three Versa HD machines by the end of 2026.

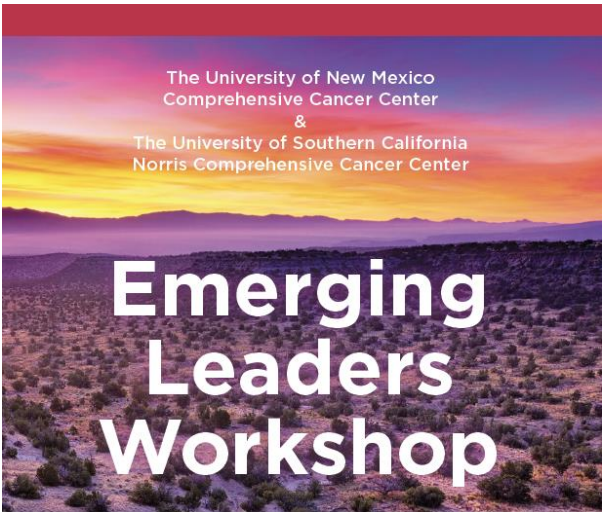


Building for the Future UNM BMT Program



CY 2024
 13 allogeneic transplants
 4 CAR-T infusions
 2 CAR-T collections for infusion in Jan.





The University of New Mexico
Comprehensive Cancer Center
&
The University of Southern California
Norris Comprehensive Cancer Center

Emerging Leaders Workshop

Changing the Face of Leadership



June 10-12 2024
Albuquerque, NM

USC Norris Comprehensive
Cancer Center
Keck Medicine of USC

NM COMPREHENSIVE
CANCER CENTER



**Prajakta Adsul,
MBBS, PhD, MPH**

Assistant Professor,
Internal Medicine

Epidemiology,
Biostatistics, and
Preventive Medicine



Eric Bartee, PhD

Associate Professor
Internal Medicine
Molecular Medicine

*Co-Director Faculty
Development
(CRTECC)



**Eliseo F. Castillo,
PhD**

Associate Professor,
Gastroenterology &
Hepatology

*Associate Director
DEI



**Jennifer Gillette,
PhD**

Professor
Pathology

*Associate Director
CRTECC



Neda Hashemi, MD

Associate Professor,
SOM - Internal
Medicine
Hematology/Oncology

PRMC chair

NCI Early Career Cancer
Clinical Investigator



**David Lee, MD,
PhD**

Associate Professor
Internal Medicine,
Hematology/Oncology,
Director of
Radiation Oncology



**Shuguang
Leng, MD, PhD**

Assistant Professor,
Internal Medicine,
Epidemiology,
Biostatistics, and
Preventive Medicine

*Co-Director CCPS



Diane Lidke, PhD

Professor, Pathology

Fluorescence
Microscopy Shared
Resource Director



**Jacklyn
Nemunaitis, MD**

Assistant Professor,
Department of Internal
Medicine, Division of
Hematology/Oncology



**Viswanathan
Palanisamy, PhD**

Professor, Internal
Medicine Molecular
Medicine *Director
ATG SR



**Jessica
Valdez, MD, MPH**

Assistant Professor,
Department of
Pediatrics, Division of
Pediatric Oncology



**Second Cohort in
2025**





Empowering Young Minds



NM COMPREHENSIVE
CANCER CENTER

Española NM, April 2024



Thank You



Questions

