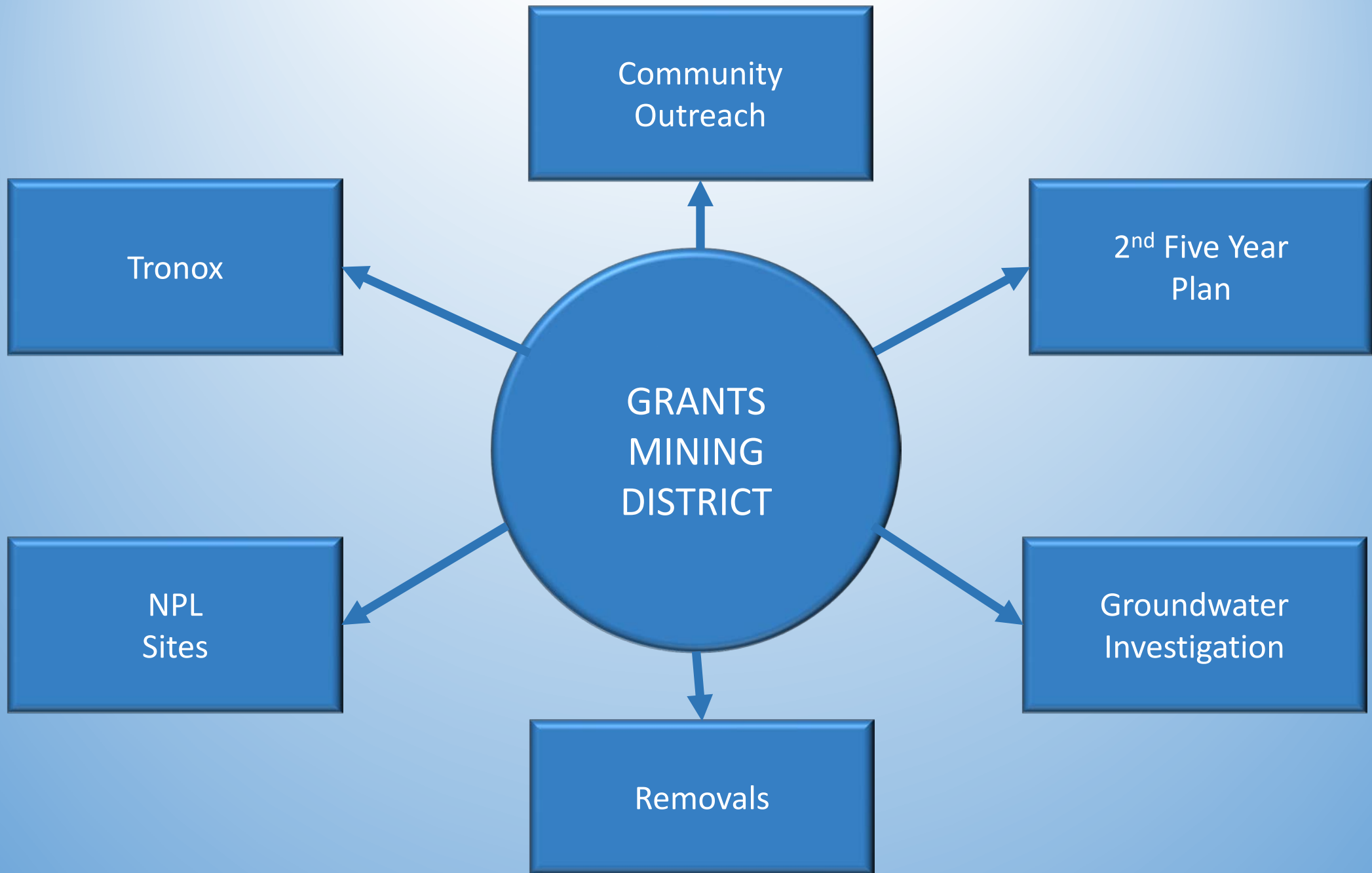




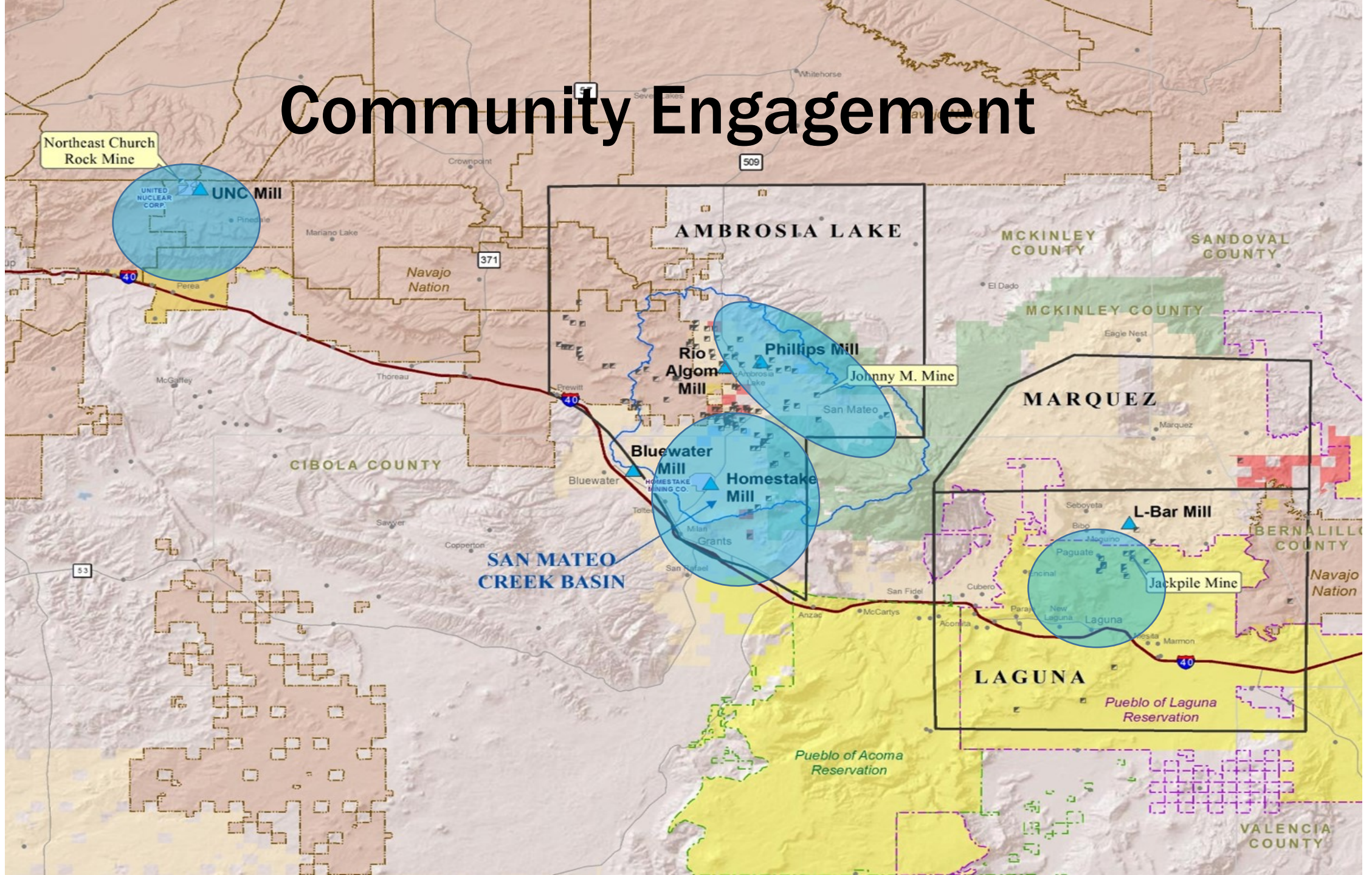
# **Presentation to the Joint Meeting of the Indian Affairs Committee and Radioactive and Hazardous Materials Committee**

U.S. Environmental Protection Agency  
Region 6

August 22, 2017



# Community Engagement



# Objectives of 2nd Five-Year Plan (2015-2020)



Assess and cleanup contamination at:

- Water Sources
- Abandoned Mines
- Former Mills
- Residential Properties

Communicate and coordinate with communities.

Grants Mining District, New Mexico

**2015-2020 Five-Year Plan**  
To  
**Assess and Address Health and Environmental Impacts of Uranium Mining and Milling**

The map displays the Grants Mining District in New Mexico, highlighting several key areas: Ambrosia Lake, San Mateo Creek Basin, and the Laguna area. It also identifies various mills and properties, including the LVC Mill, Rio Algodon Mill, Priggs Mill, Horneville Mill, and L-Bar Mill. The map is color-coded to show different zones and features, with a legend at the bottom right.

A small inset photograph shows four men standing outdoors in a field, engaged in a discussion. They are dressed in casual attire, including shirts and hats, and appear to be in a field setting.

EPA United States Environmental Protection Agency

# Ground Water Investigation of the San Mateo Creek Basin



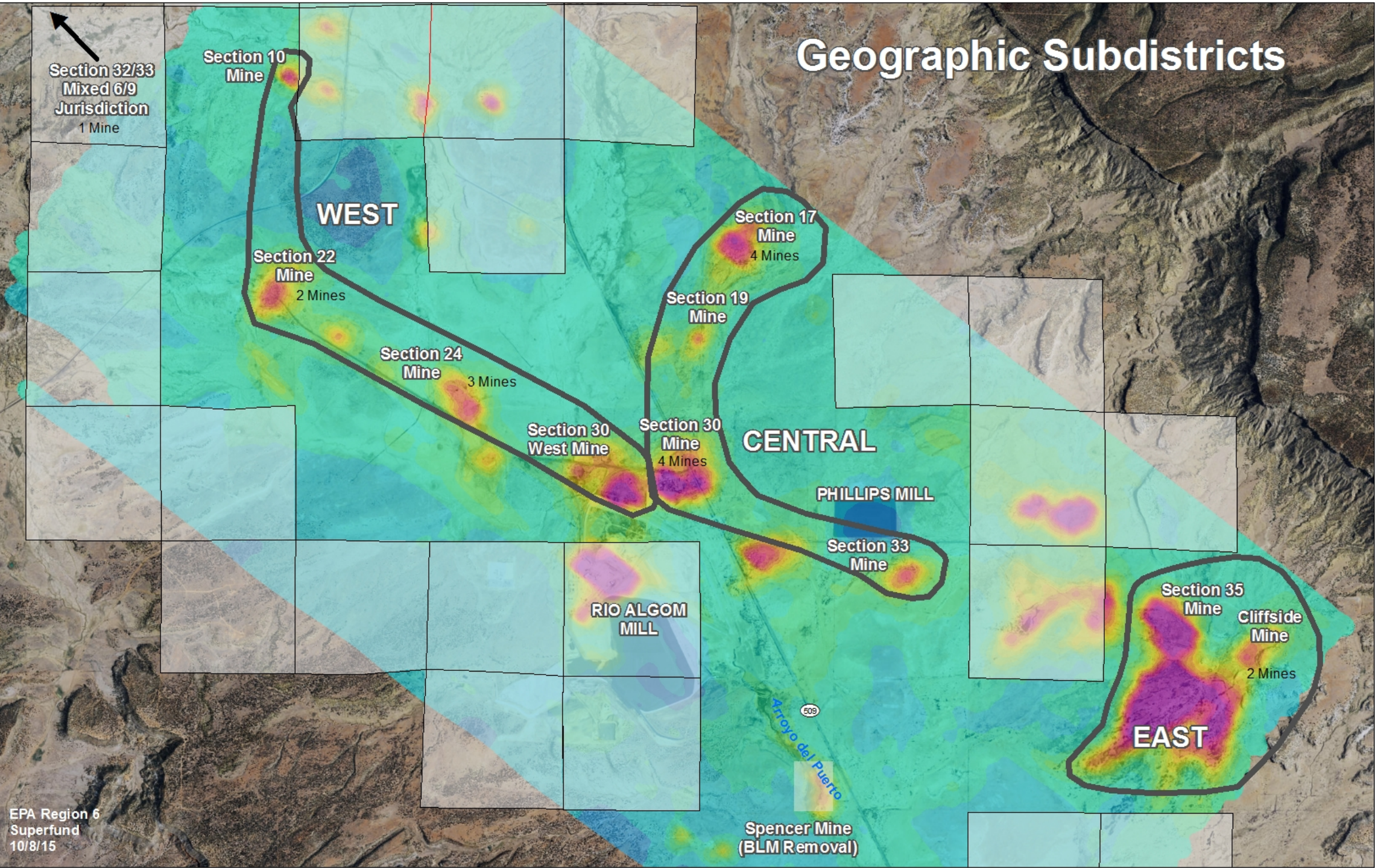
- Investigating impacts of mining and milling on the ground water.
- Public report and meetings in Fall 2017.
- Ground water information for use by regulatory agencies, stakeholders, and communities to guide their decision-making.

# Tronox Settlement Agreement “Designated Navajo Area Mines”



- \$985 million settlement to fund response at Kerr-McGee/Tronox Mines.
- Coordination between EPA, Navajo Nation, NMED, and NM-EMNRD-MMD.
- Determined extent of contamination on eastern and western areas of Ambrosia Lake and began the assessment of cleanup methods.
- Began assessment of contamination of central area of Ambrosia Lake.
- Time-Critical Removal Action to install Radon Abatement system at a residential structure.

# Geographic Subdistricts



Section 32/33  
Mixed 6/9  
Jurisdiction  
1 Mine

WEST

CENTRAL

EAST