

# Cumbres & Toltec Scenic Railroad Ongoing Capital Programs

---





**CUMBRES & TOLTEC**



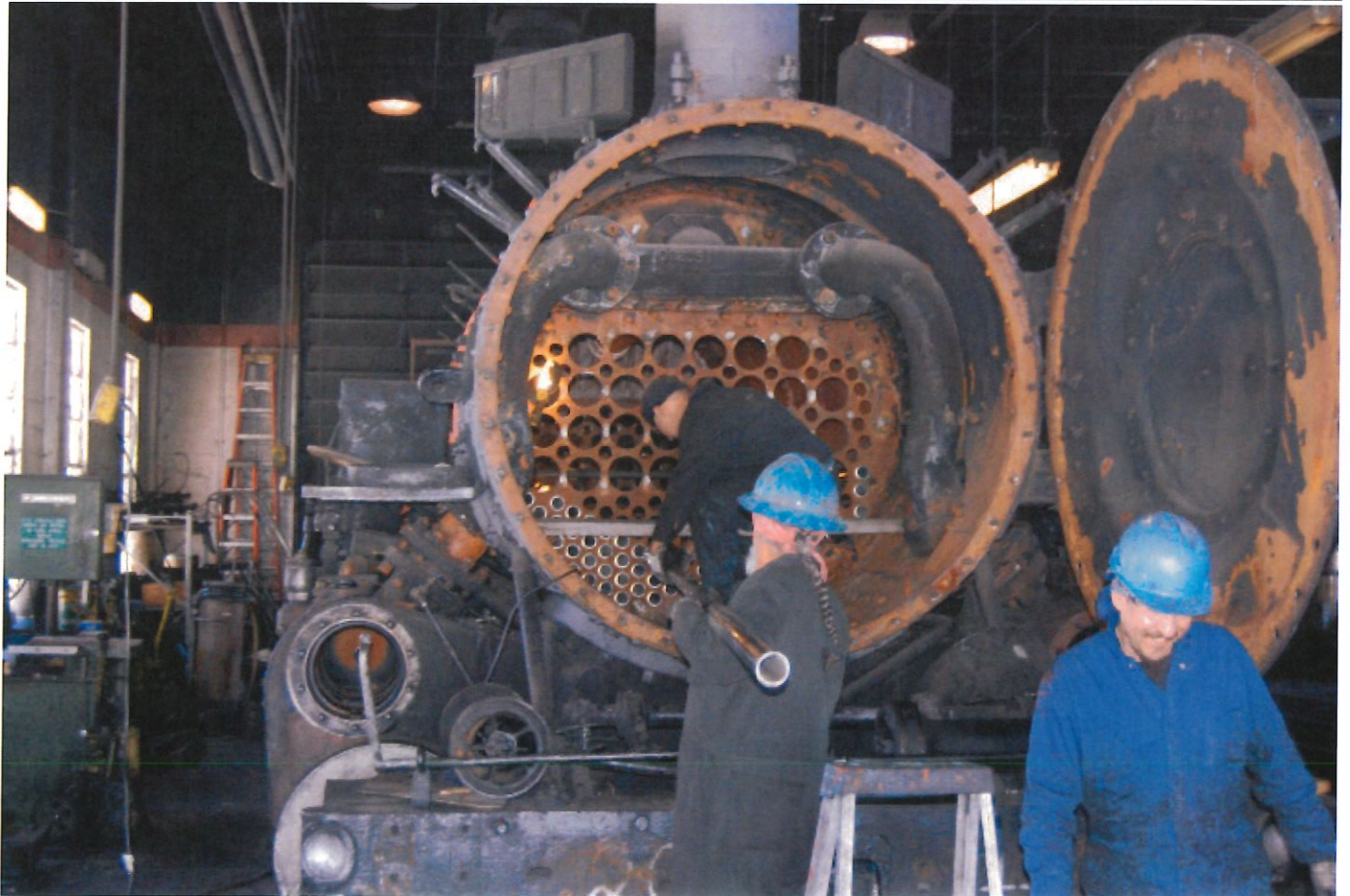
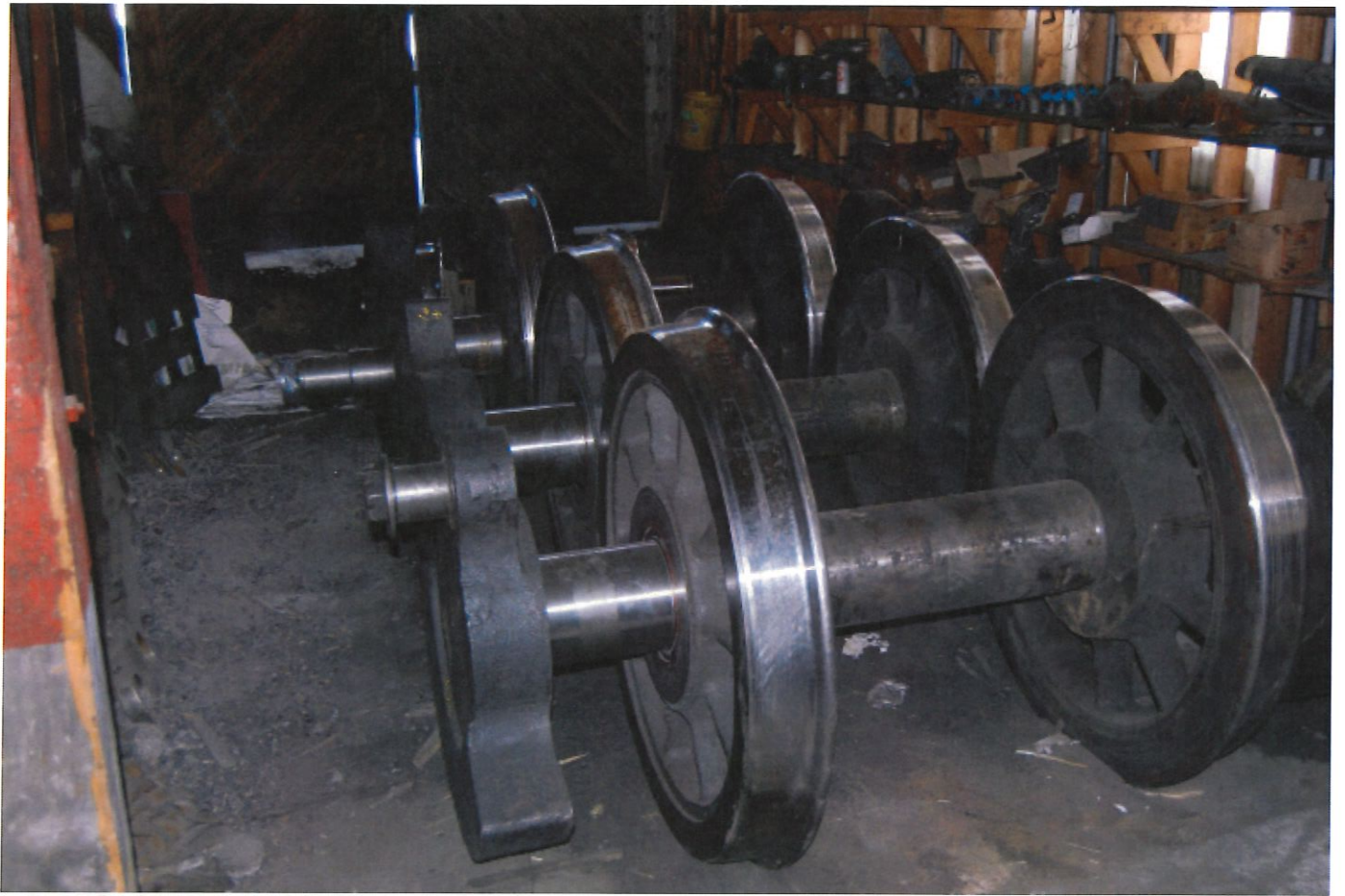
**SCENIC RAILROAD**  
NATIONAL HISTORIC LANDMARK

## **C & T S RR**

### **Capital Improvement Program**

#### **Locomotives**

- Five active Steam Locomotives.
- Complete “tear down” inspection required every 1472 steam days.
- Boilers rebuilt every 9 years.
- Running gear rebuilt every 5 years.
- Maintenance mandated by Federal Regulations.
- Program must be continuously maintained.



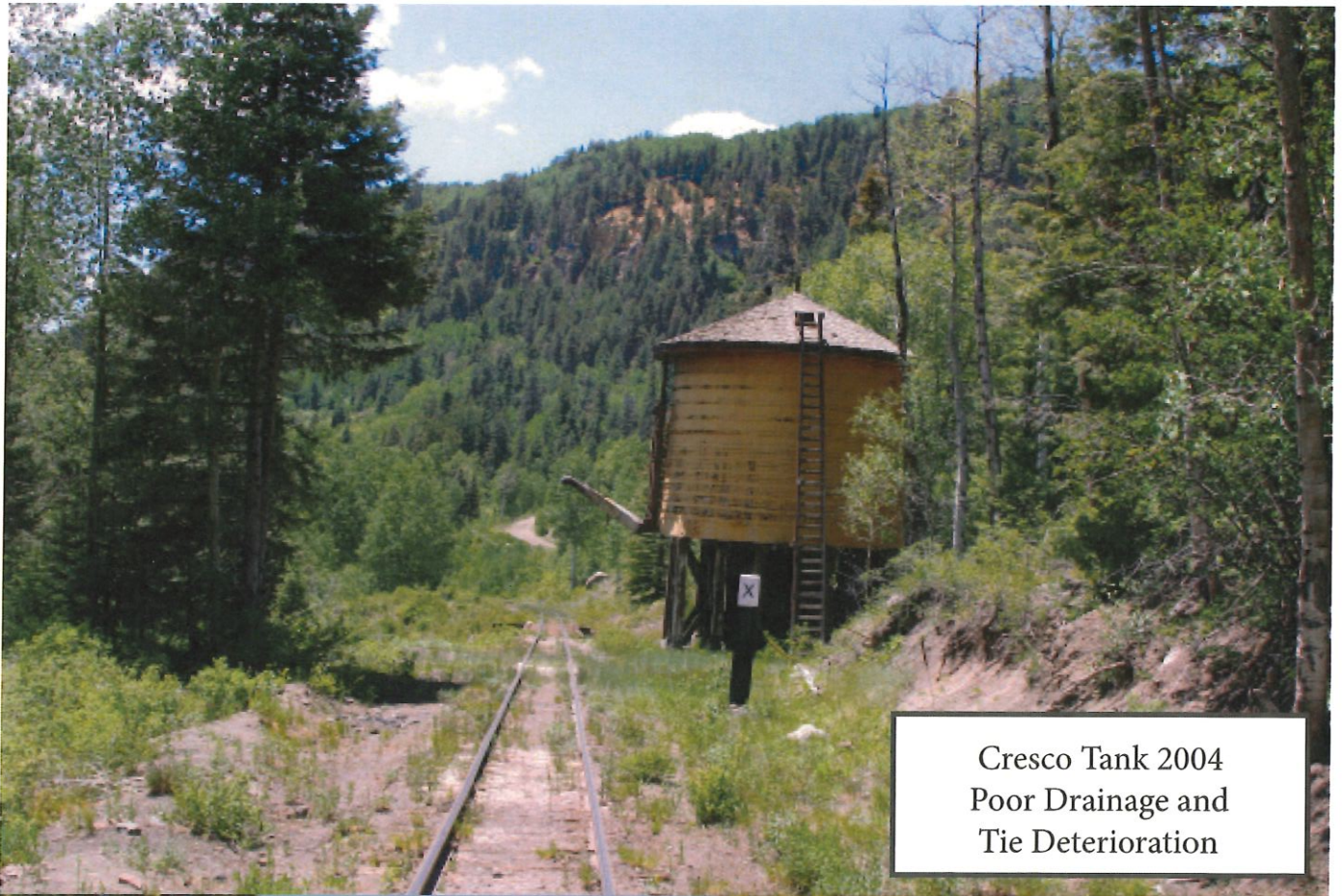


## **C & T S RR**

### **Capital Improvement Program**

#### **Track Upgrade**

- 64 miles Chama to Antonito.
- Entire railroad in poor condition at beginning of program.
- Comprehensive upgrade now 85% complete.
- Maintenance mandated by Federal Regulations.
- Deferred maintenance increases costs.



Cresco Tank 2004  
Poor Drainage and  
Tie Deterioration



Cresco Tank 2011  
Good Ballast and Ties  
Track Surfaced



Milepost 339 - Above Lobato  
Encroaching Vegetation Due  
To Poor Drainage 2004

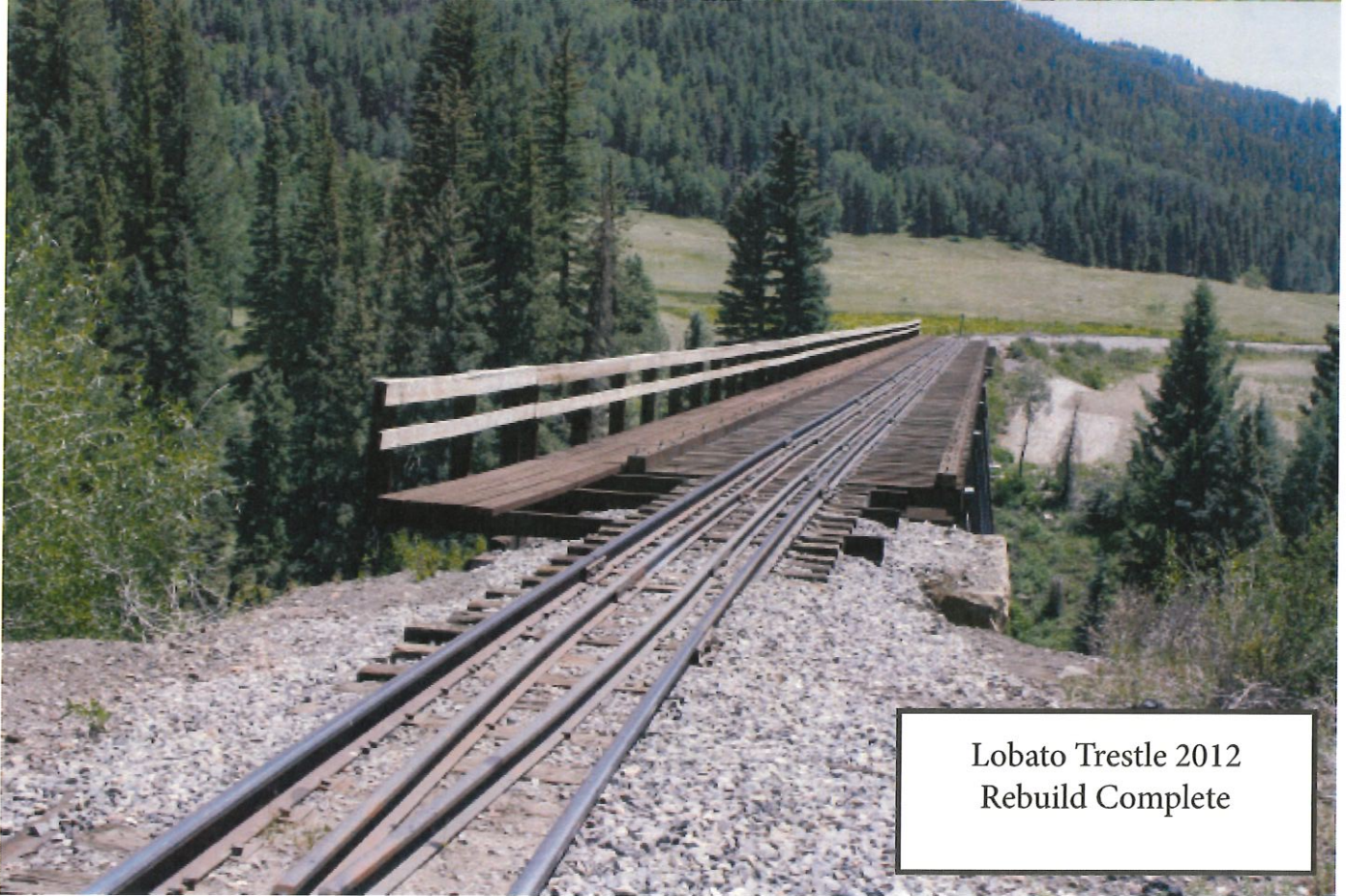


Milepost 339 - Above Lobato  
Good Ballast  
and Drainage 2010





Lobato Trestle 2010  
Day After Fire  
Showing Fire Damage



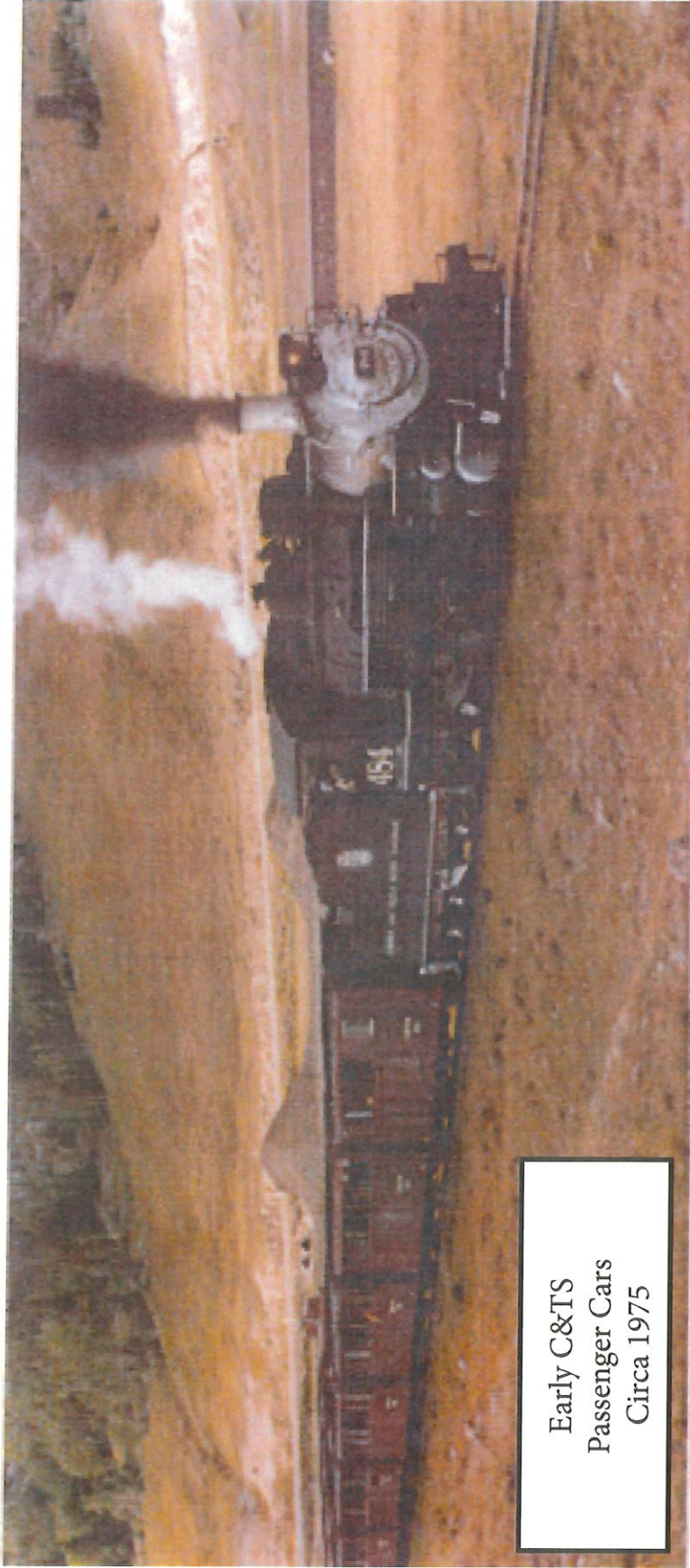
Lobato Trestle 2012  
Rebuild Complete

# **C & T S RR**

## **Capital Improvement Program**

### **Passenger Car Program**

- Fleet contains 19 passenger cars.
- All cars are home built. None available at start-up.
- Early cars modified wooden box cars.
- First seven passenger cars constructed in 1981 have limited accommodations.
- Next Twelve cars constructed 1986-1997 to an improved design and appearance.
- Four Cars upgraded to meet demand for premium services. Two more near completion.
- Two of the newer cars modified to accommodate ADA customers.
- One-third of fleet at 35 years old and are being rebuilt to current standards



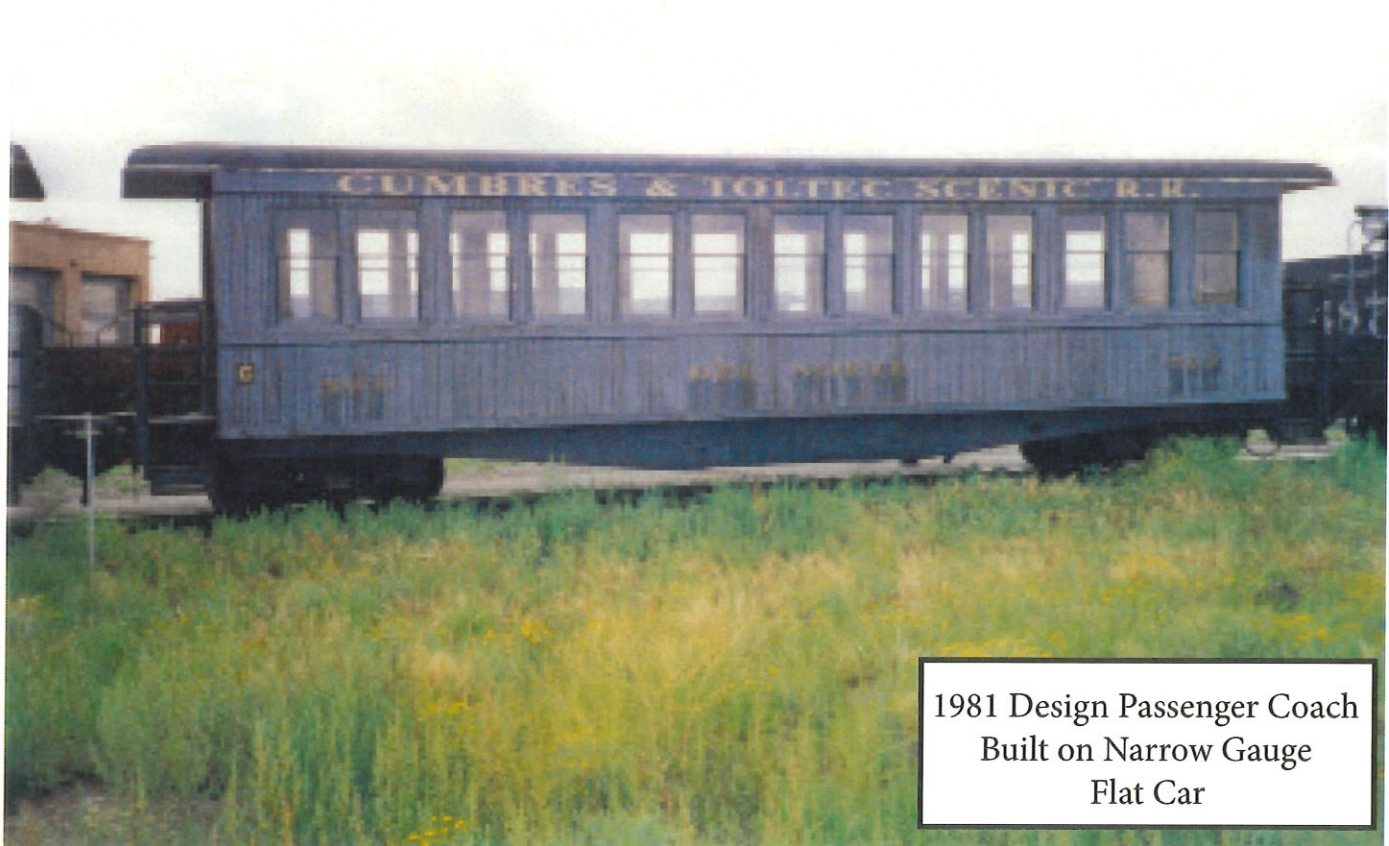
Early C&TS  
Passenger Cars  
Circa 1975



Latest C&TS  
Passenger Cars  
Circa 2015



Earliest C&TS  
Passenger Cars  
Made of Modified Box Cars



1981 Design Passenger Coach  
Built on Narrow Gauge  
Flat Car



1981 Design Passenger Coach  
with Upgraded Interior  
Appearance



1986 Design Passenger Coach  
with Upgraded Interior  
Appearance

