

Doña Ana Community College

Welcome

Mónica F. Torres
President

Agenda

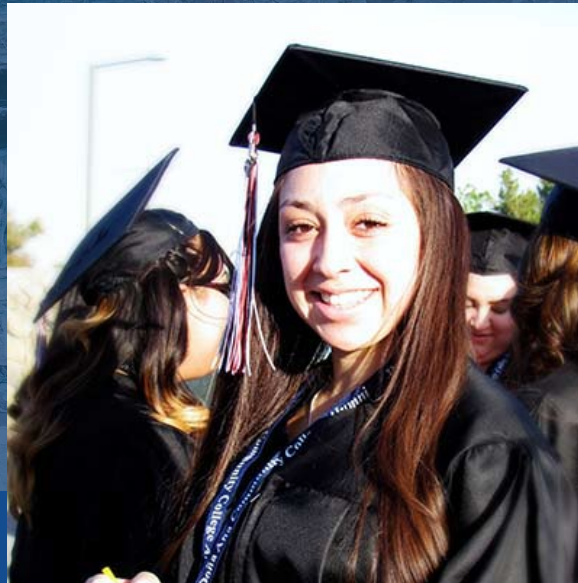
COMMITMENT TO COMMUNITY

**COLLEGE UPDATE:
FACILITIES, PROGRAMS, STUDENTS**

SUNLAND PARK OPPORTUNITIES

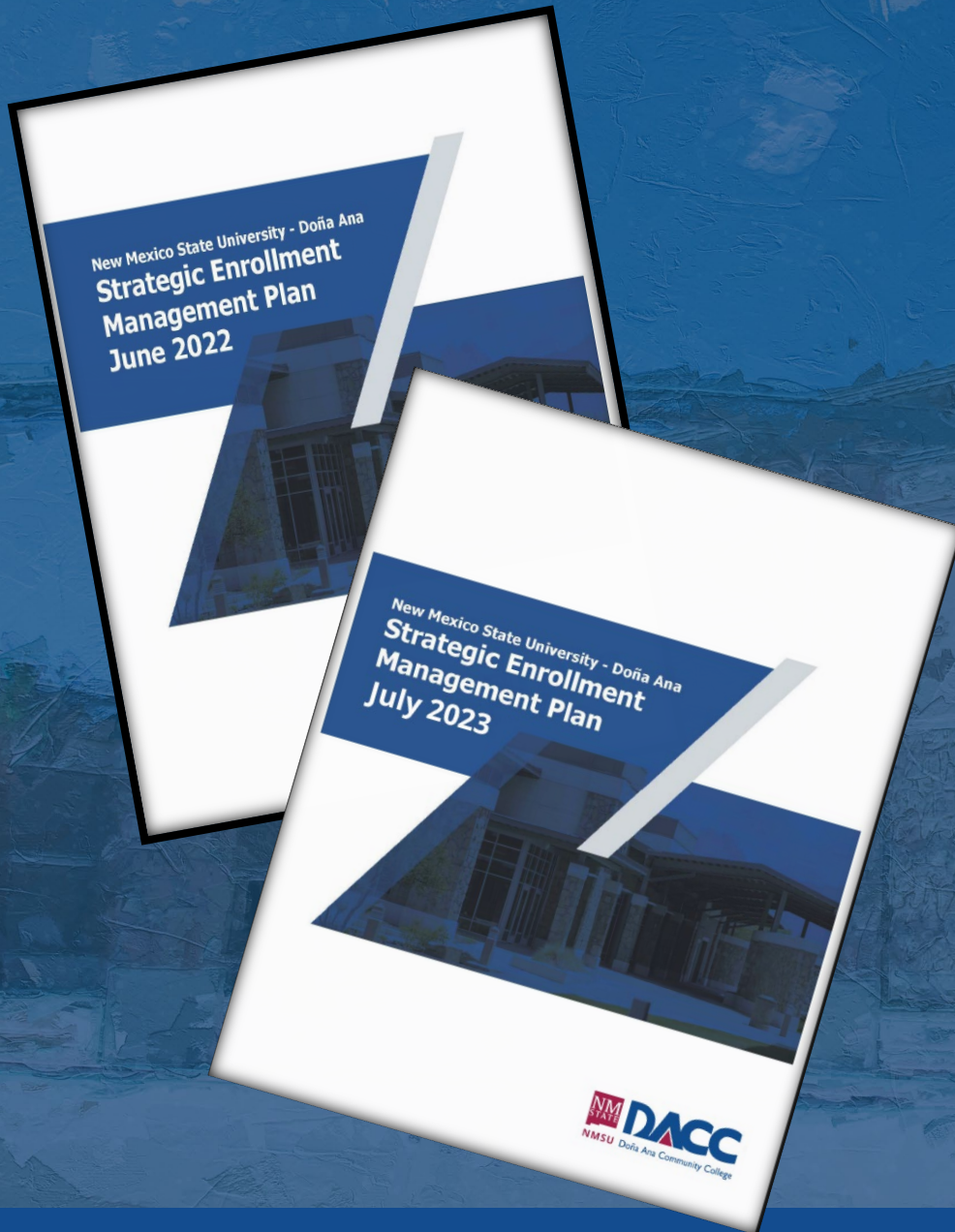
Our Commitment:

To ensure that people in the communities we serve can access *and* benefit from services and resources at DACC.



Enrollment Priorities: "Things that Matter"

- Access: Increase number of community members who access our services.
- Support: Increase number of students who use college and community resources that have been shown to support success.
- Completion: Increase number of students who reach their academic goals.
- Efficiency: Adapt operations to support these results.



College Update



DACC Sites & Facilities

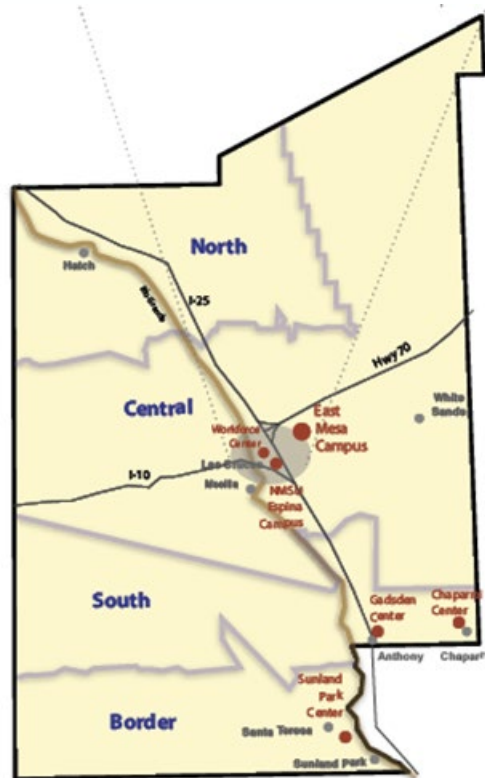
East
Mesa
Campus



Workforce
Center



Espina Campus at NMSU



Gadsden Center



Chaparral Center



Sunland Park Center

DACC Programs

East
Mesa
Campus



Workforce
Center



Espina Campus at NMSU

CREDIT OPTIONS

(handout)

- 44 associate degree
- 76 certificates

a few notes

- transfer/workforce
- 100% online programs
- "2+2" to NMSU
- face-to-face/hybrid



Gadsden Center



Chaparral Center



Sunland Park Center

DACC Programs

Non Credit Options

- Workforce Training
- High School Equivalency (HSE)
- English as a second language (ESL)
- integrated education and training (IET)
- Small Business Support (SBDC)

East
Mesa
Campus



Workforce
Center



Espina Campus at NMSU



Gadsden Center

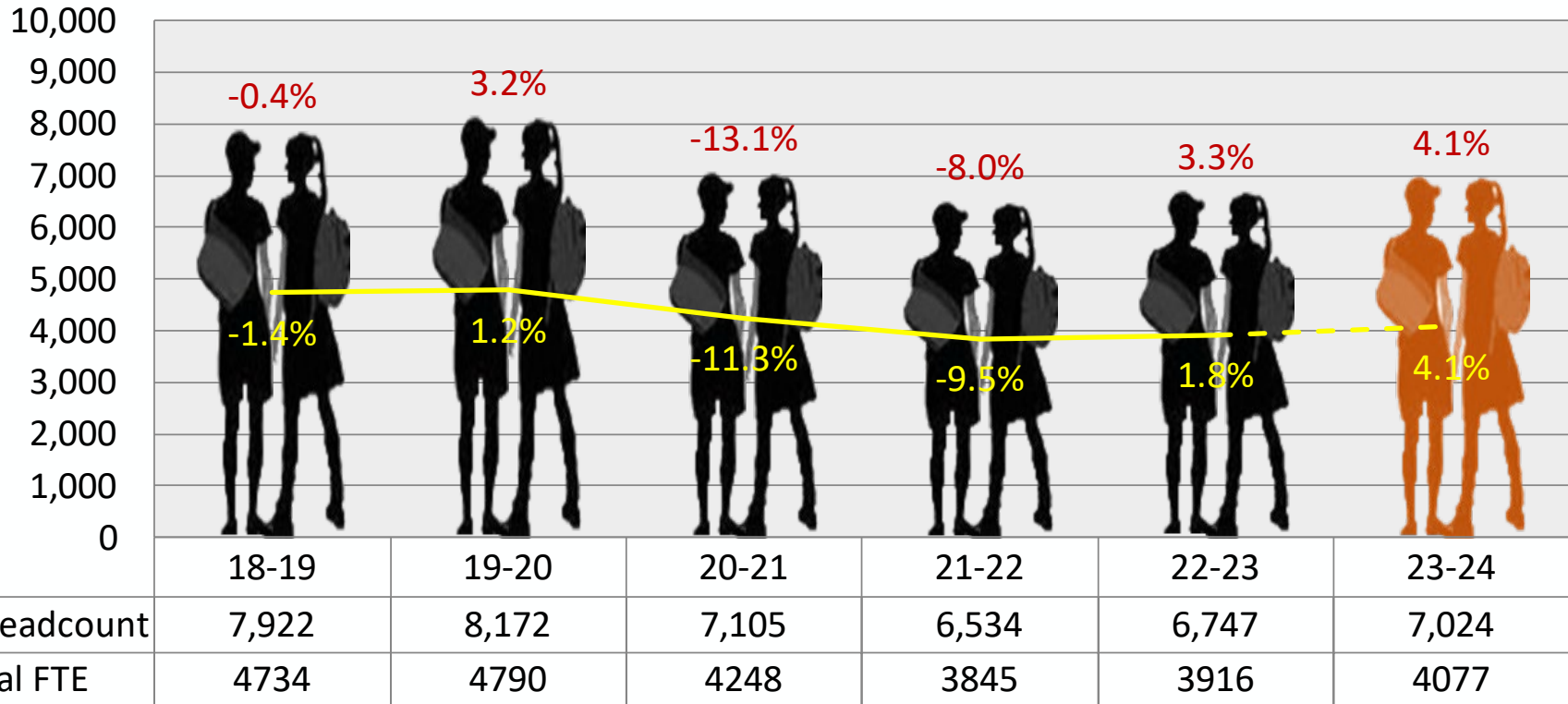


Chaparral Center



Sunland Park Center

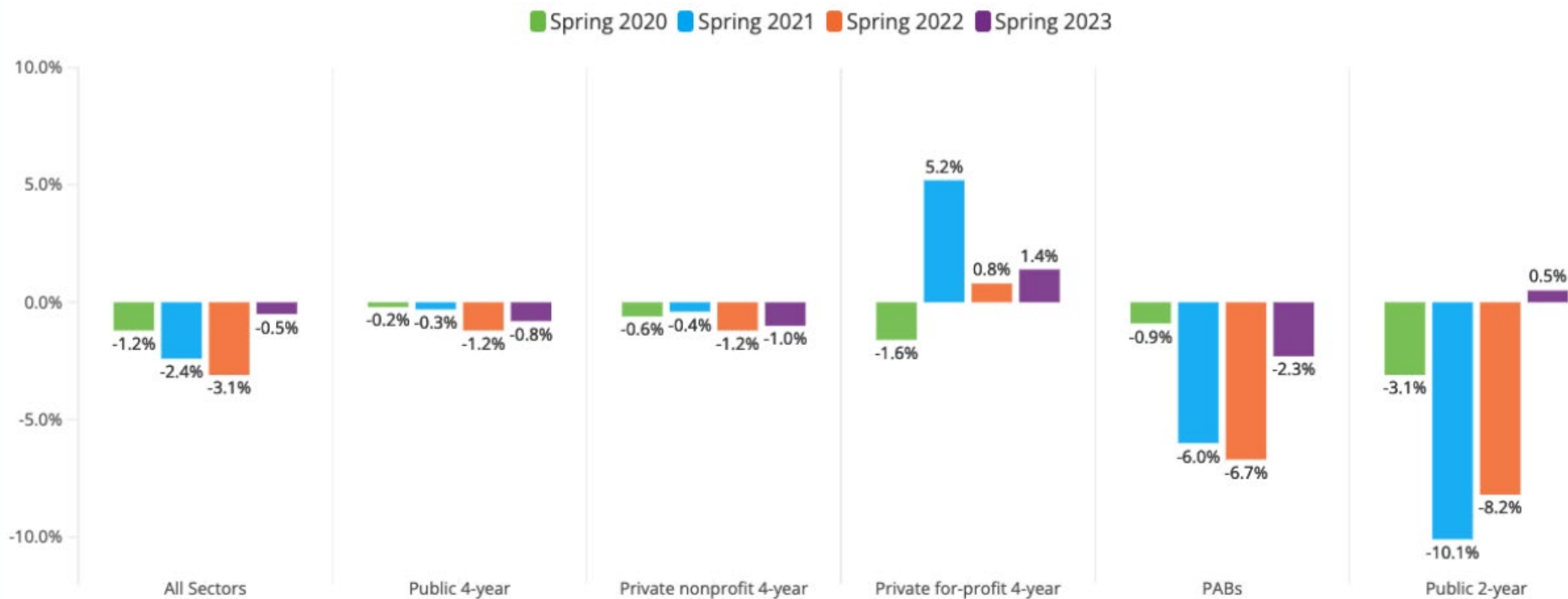
DACC Enrollment Data



Note: Annual FTE for FY23-24 is estimated as of July 2023

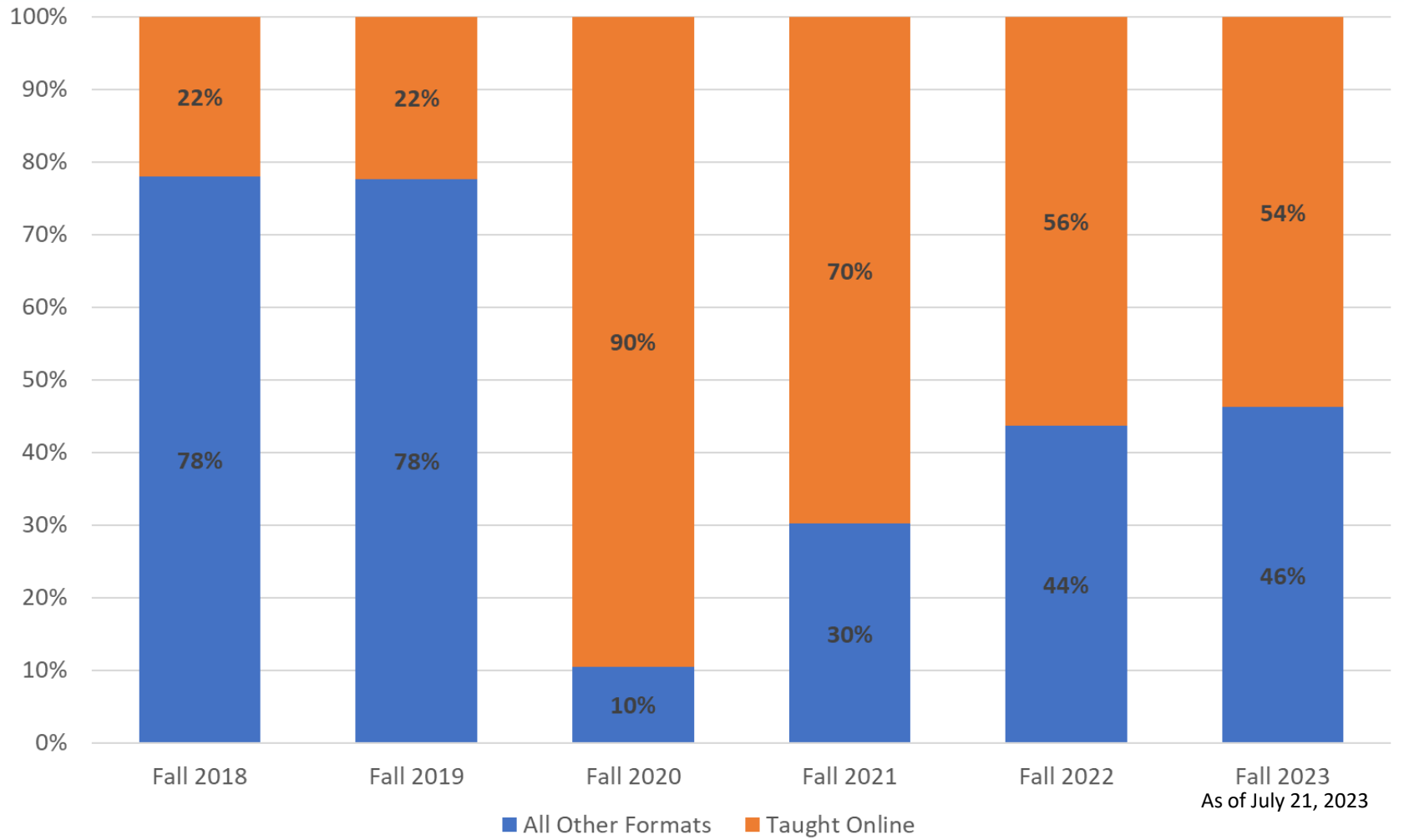
<https://public.tableau.com/profile/do.a.ana.community.college.institutional.analysis#!/>

Figure 1. Percent Change in Enrollment from Previous Year by Institutional Sector: 2019 to 2023

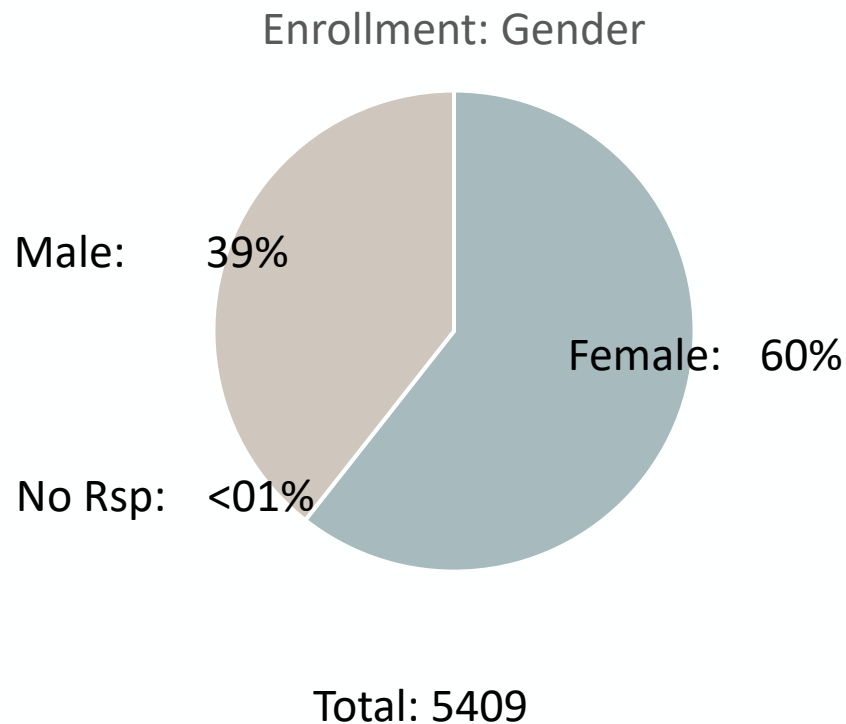


* PABs — Primarily Associate Degree Granting Baccalaureate

DACC Five Year Student Credit Hours by Delivery Method

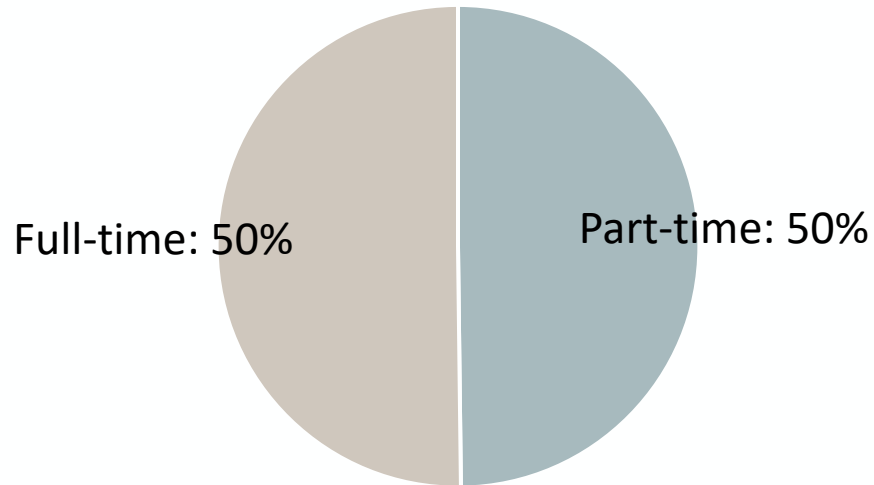


DACC Students: Spring 2023 Enrollment



DACC Students: Spring 2023 Enrollment

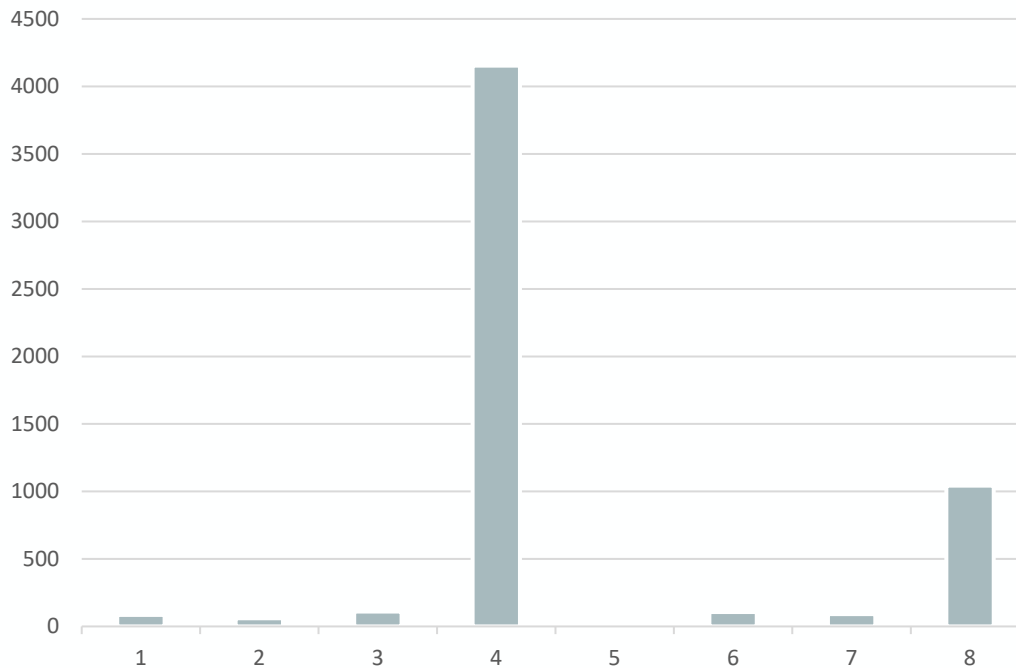
Enrollment: Full-time/Part-time



Total: 5409

DACC Students: Spring 2023 Enrollment

Enrollment: Race/Ethnicity

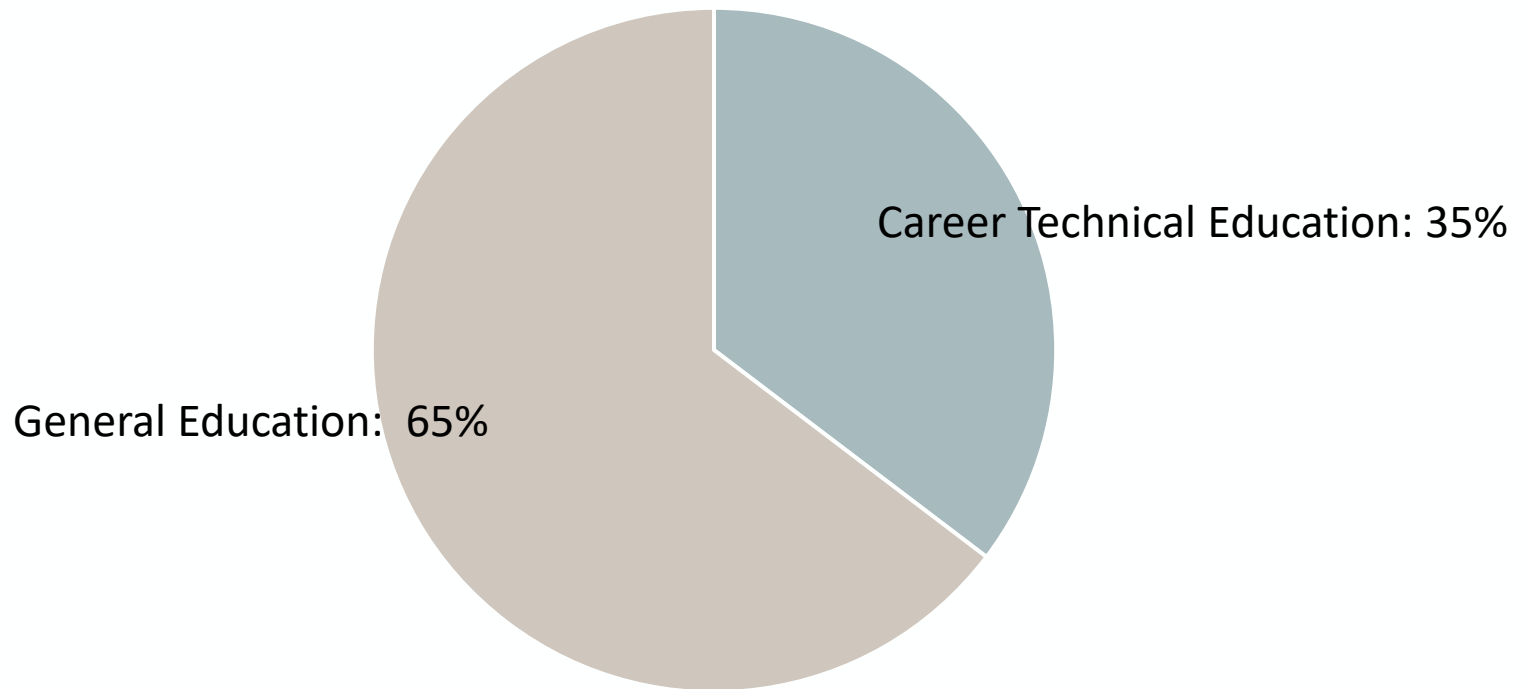


Total: 5409

Amer Ind/Alas Nat:	02%
Asian:	01%
Black/Afr Amer:	02%
Hispanic:	73%
Nat Haw/Other PI:	<1%
Unknown:	01%
Two/More Races:	02%
White:	18%

DACC Students: Spring 2023 Enrollment

Enrollment: Student Credit Hours Taken in Areas of Study



More about DACC Students: Certificates and Associate Degrees

	2019-2020	2020-2021	2021-2022
Certificates (less than one year)	118	107	80
Certificates (more than one less than two years)	384	318	289
Associate Degrees	1017	889	906
Total	1519	1314	1275

Thank you!

Contact Information:
Mónica F. Torres, Chancellor
NMSU System Community Colleges
mftorres@nmsu.edu
575.527.7511

