

September 17, 2018

Transportation Infrastructure Revenue Subcommittee

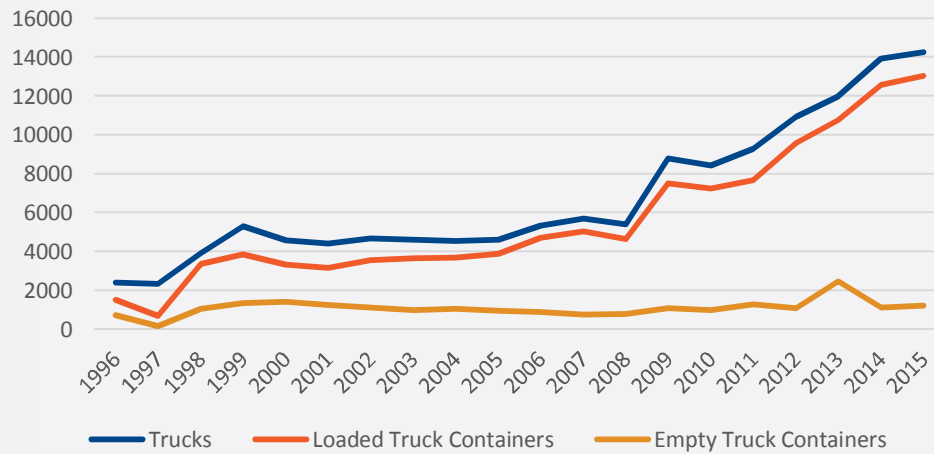
Columbus Land Port of Entry
Long-term Flood Mitigation Plan Development



discipline | intensity | collaboration | shared ownership | solutions

Entries of Trucks and Containers

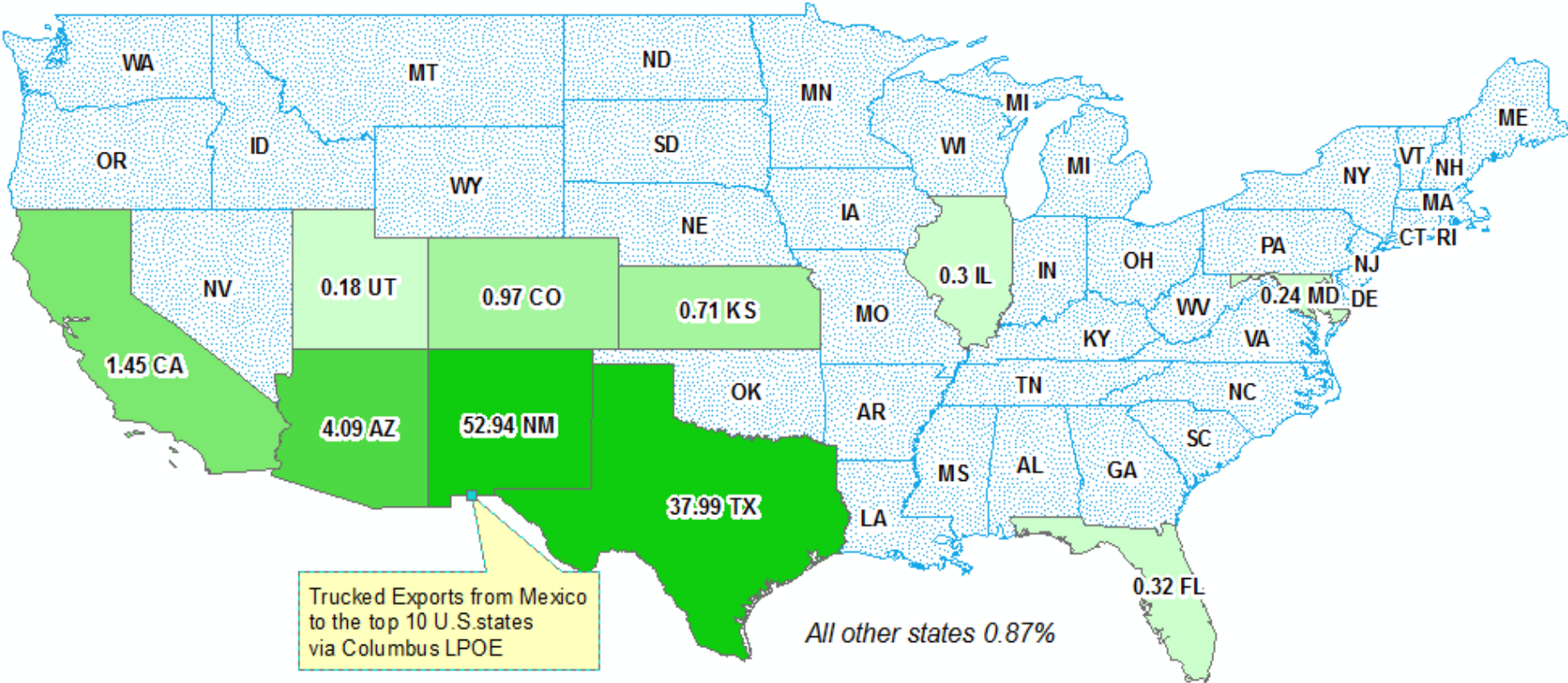
Figure 9
Entries of Trucks and Containers
Columbus LPOE, 1996-2015



Growth has
Increased
7
Fold in
19 Years

Top 10 Receiving States

Map 1
U.S. Trucked Imports from Mexico via Columbus LPOE
Percentage of Total Value in U.S. Dollars, 2006-2016
Top 10 Receiving States



Top 20 Commodities

Table 2
Imports by Truck from Mexico to U.S. via Columbus, Top 20 Commodities, 2007-2016, Value

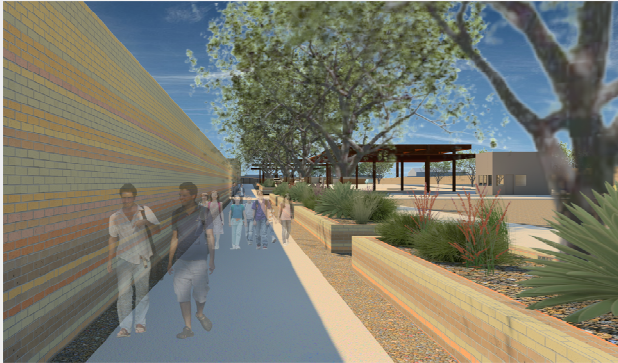
Code	Commodity Description	Value in U.S. Dollars	Share of Total Value	Cumulative Share
7	Edible vegetables and certain roots and tubers	\$291,287,129	48.44	48.44
1	Live animals	\$181,729,722	30.22	78.66
9	Coffee; tea; mate and spices	\$65,195,871	10.84	89.50
8	Edible fruit and nuts; Peel of citrus fruit or melons	\$17,701,287	2.94	92.45
20	Preparations of vegetables; fruit; nuts; or other parts of plants	\$11,464,925	1.91	94.35
64	Footwear; gaiters and the like; Parts of such articles	\$6,453,709	1.07	95.43
10	Cereals	\$6,385,385	1.06	96.49
12	Oil seeds and oleaginous fruits; Miscellaneous grains; Seeds and fruit; Industrial plants	\$5,838,737	0.97	97.46
87	Vehicles; other than railway or tramway rolling stock; and parts and accessories thereof	\$2,894,707	0.48	97.94
44	Wood and articles of wood; Wood charcoal	\$2,883,187	0.48	98.42
69	Ceramic products	\$2,808,564	0.47	98.89
42	Articles of leather; Saddlery and harness; Travel goods; handbags and similar containers	\$2,157,176	0.36	99.25
94	Furniture; Bedding; mattress supports; cushions and similar stuffed furnishings; Lighting fittings	\$1,716,272	0.29	99.53
11	Products of the milling industry; Malt; Starches; inulin; Wheat gluten	\$946,436	0.16	99.69
95	Toys; games and sports equipment; Parts and accessories thereof	\$731,377	0.12	99.81
98	Special classification provisions	\$242,739	0.04	99.85
84	Nuclear reactors; boilers; machinery and mechanical appliances; parts thereof	\$181,243	0.03	99.88
71	Natural or cultured pearls; precious or semiprecious stones; precious metals; articles thereof	\$166,051	0.03	99.91
70	Glass and glassware	\$145,611	0.02	99.93
39	Plastics and articles thereof	\$88,848	0.01	99.95
	All other commodities	\$311,037	0.05	

Source: U.S. Department of Transportation, Bureau of Transportation Statistics, and author calculations.
https://transborder.lts.gov/programs/international/transborder/TRBR_DAPC07.html, Accessed February 25, 2017.

Columbus LPOE Expansion



Renderings



View from pedestrian walkway



View from POV primary inspection looking east toward main building

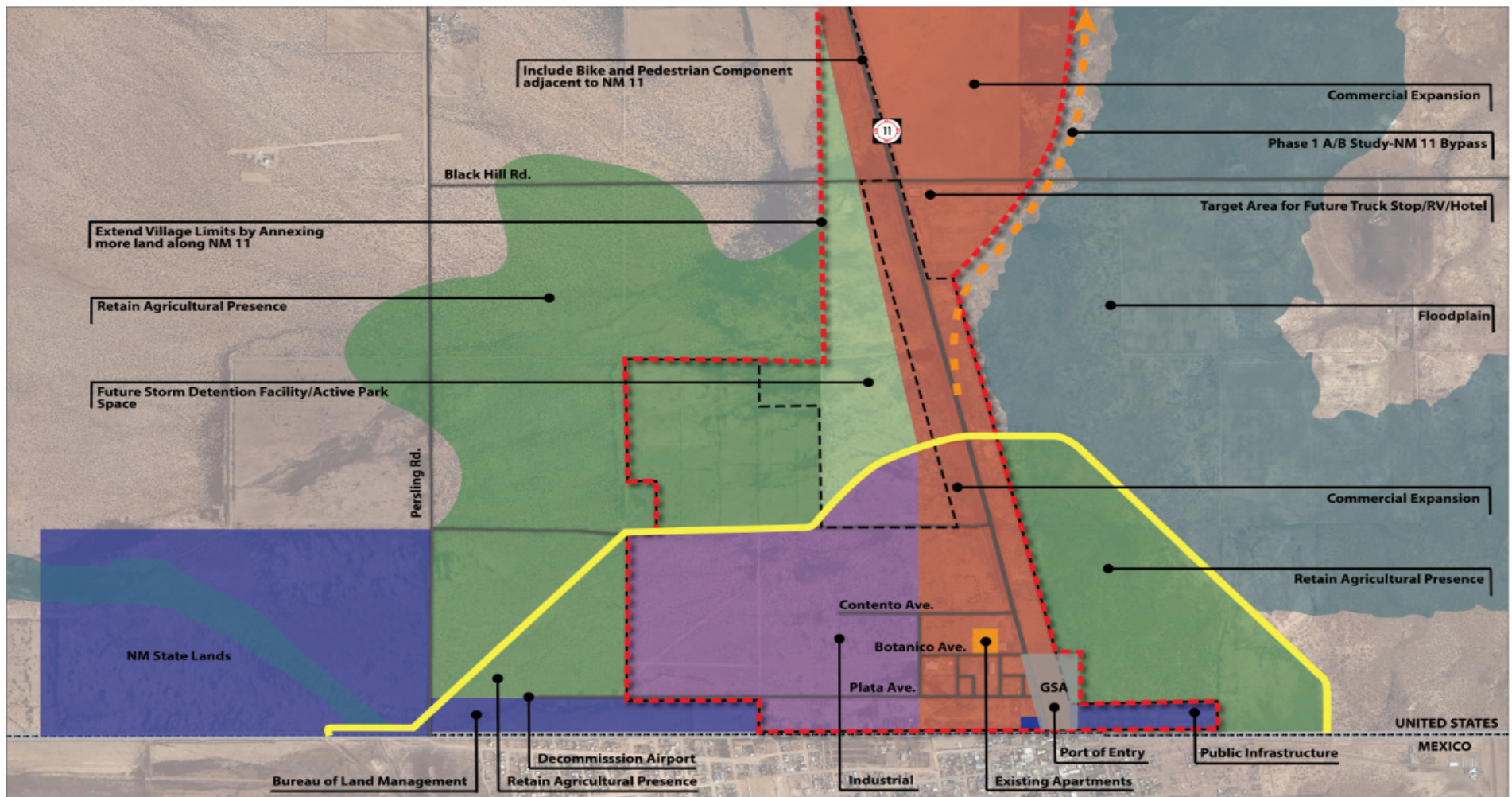


View of main building south side looking north



View from commercial dock from east looking west

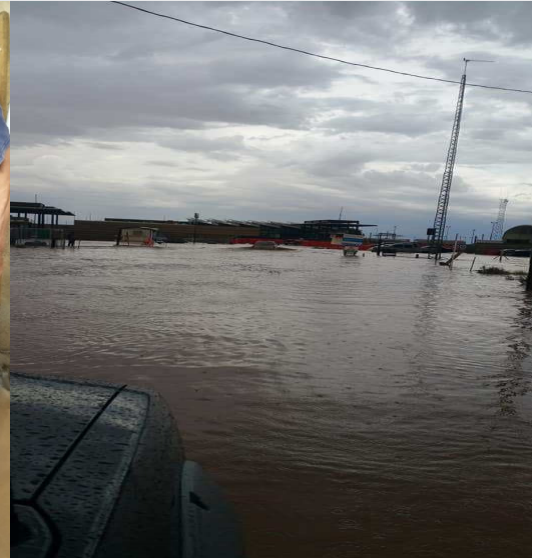
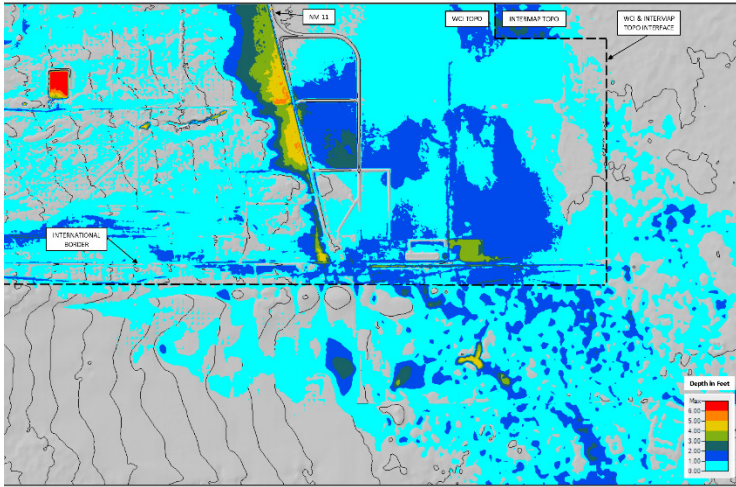
Columbus LPOE Expansion



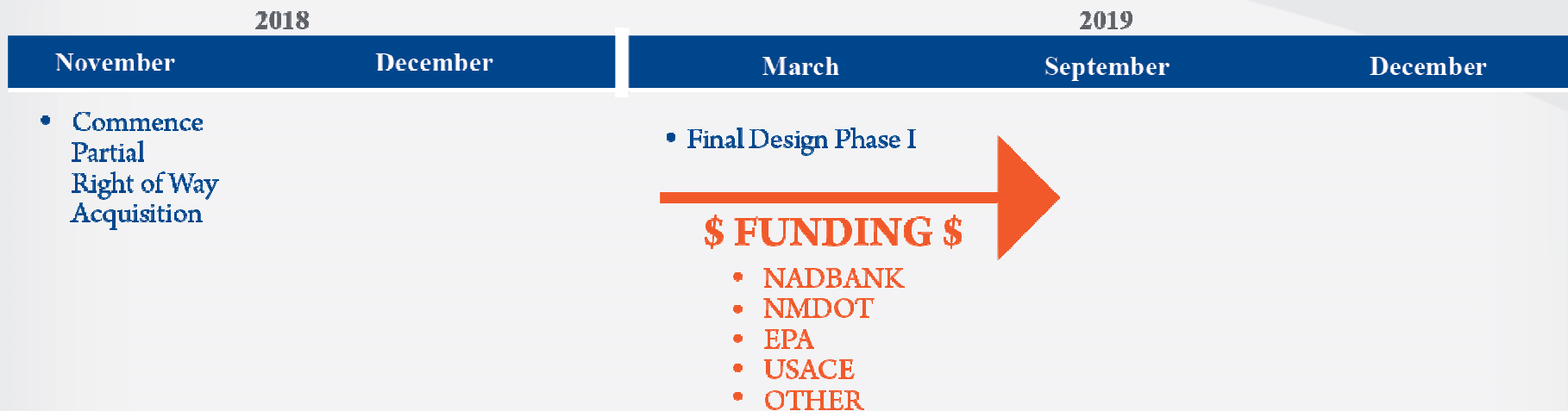
- Legend**
- Proposed Village Limits
 - Existing Village Limits
 - Phase 1 A/B Study
 - Berm
 - GSA Land Port of Entry (LPOE)
 - Multi-Family
 - Commercial
 - Industrial/Agricultural Processing
 - Institutional
 - Parks/Open Space
 - Agricultural

Purpose and Need

COLUMBUS EXISTING CONDITIONS
HEC-RAS 2D MODEL OUTPUT FOR 100-YEAR FLOOD DEPTHS



Planning & Design Process/ Schedule



Rendering – SW looking NE



WILSON
& COMPANY

Illustration © BRIAN PARASITI

Rendering – SW looking NE



Rendering – SW looking NE



Rendering – W looking E



Rendering – W looking E



WILSON
& COMPANY

Illustration © 2011 Wilson & Company

Next Steps

Secure IBWC/CILA Technical Review Comments and Preferred Alternative

Recommended Key Coordination Items

- Plan, Design, and Construct Diversion Berm in Palomas (westside)
- Formal Agreement between County and Private Owner
- Water Trust Board (WTB) MOU
 - ▶ Cost Share
 - ▶ M&O
 - ▶ Long-term Ownership
 - ▶ Other
- Consideration and Approval of an MOU among NMBA, Village of Columbus, Luna County, and Deming Public Schools
- LFC 10.25.18 Presentation for 2019 Legislative Capital Outlay Request

NMBA to proceed with ROW acquisition on Westside of NM 11

- Intergovernmental Agreement is under review in Santa Fe

Phase I Design Package

- Final Design Pond
- Final Design NM 11 Bridge and Roadway

Funding Status for Construction

- Submit for 2019 Legislative Session
- Pending USACE Section 595 Funding Assistance
- EPA Clean Water State Revolving Fund
- NADBank

Put Implementation Strategy into Action

Discussion & Action Items



discipline | intensity | collaboration | shared ownership | solutions

WILSON
& COMPANY

Questions?



discipline | intensity | collaboration | shared ownership | solutions

WILSON
& COMPANY