

Supporting Disengaged & Unaccounted For Students

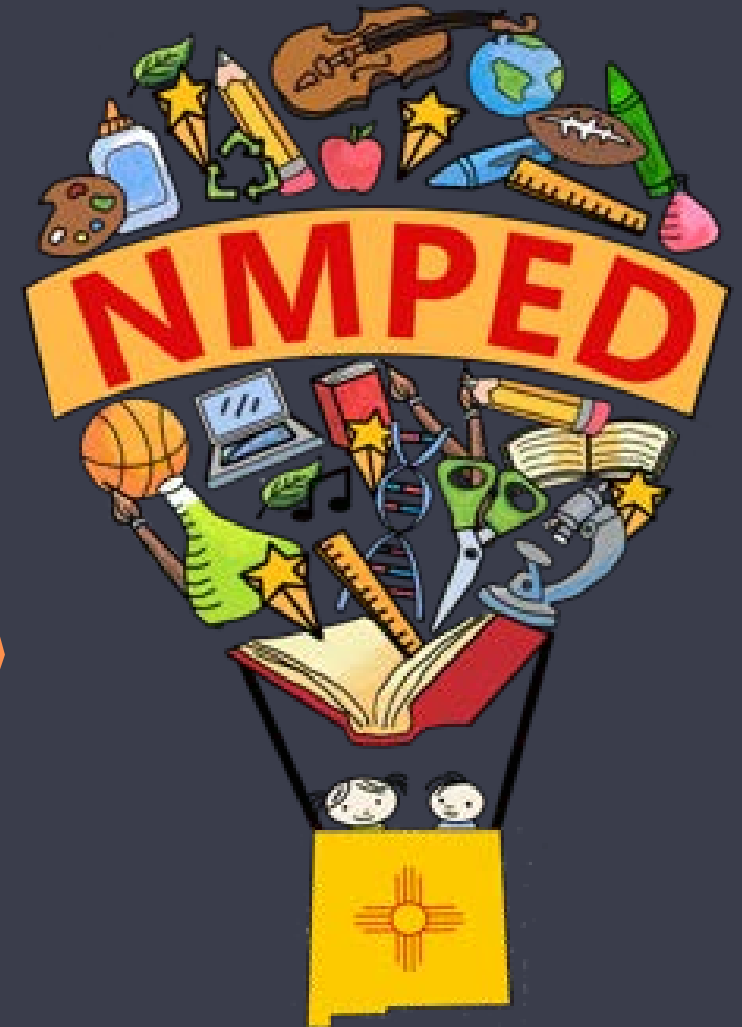
Legislative Education Study Committee

Deputy Secretary Katarina Sandoval

Deputy Secretary Gwen Perea Warniment

December 18, 2020

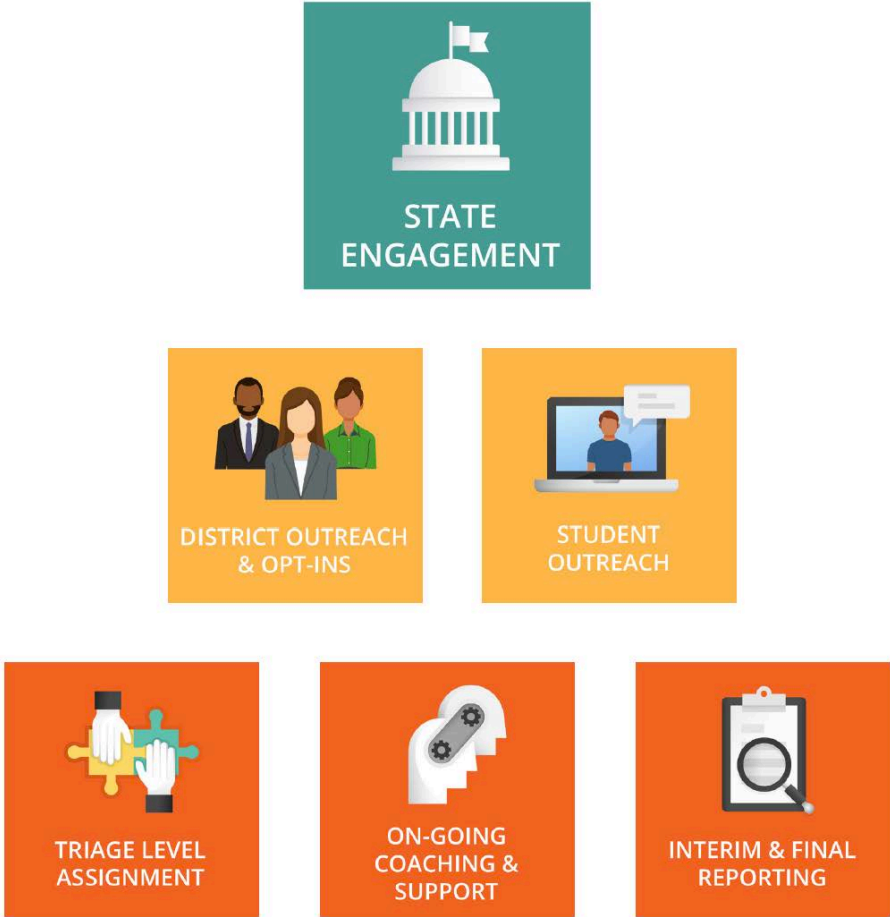
Investing for tomorrow, delivering today.



Presentation Overview

1. Engage NM and Our Partnership with *Graduation Alliance* as a Mechanism for Attendance for Success Intervention
2. Interagency Collaboration to Identify and Support Unaccounted for Students

Engage New Mexico: How it Works

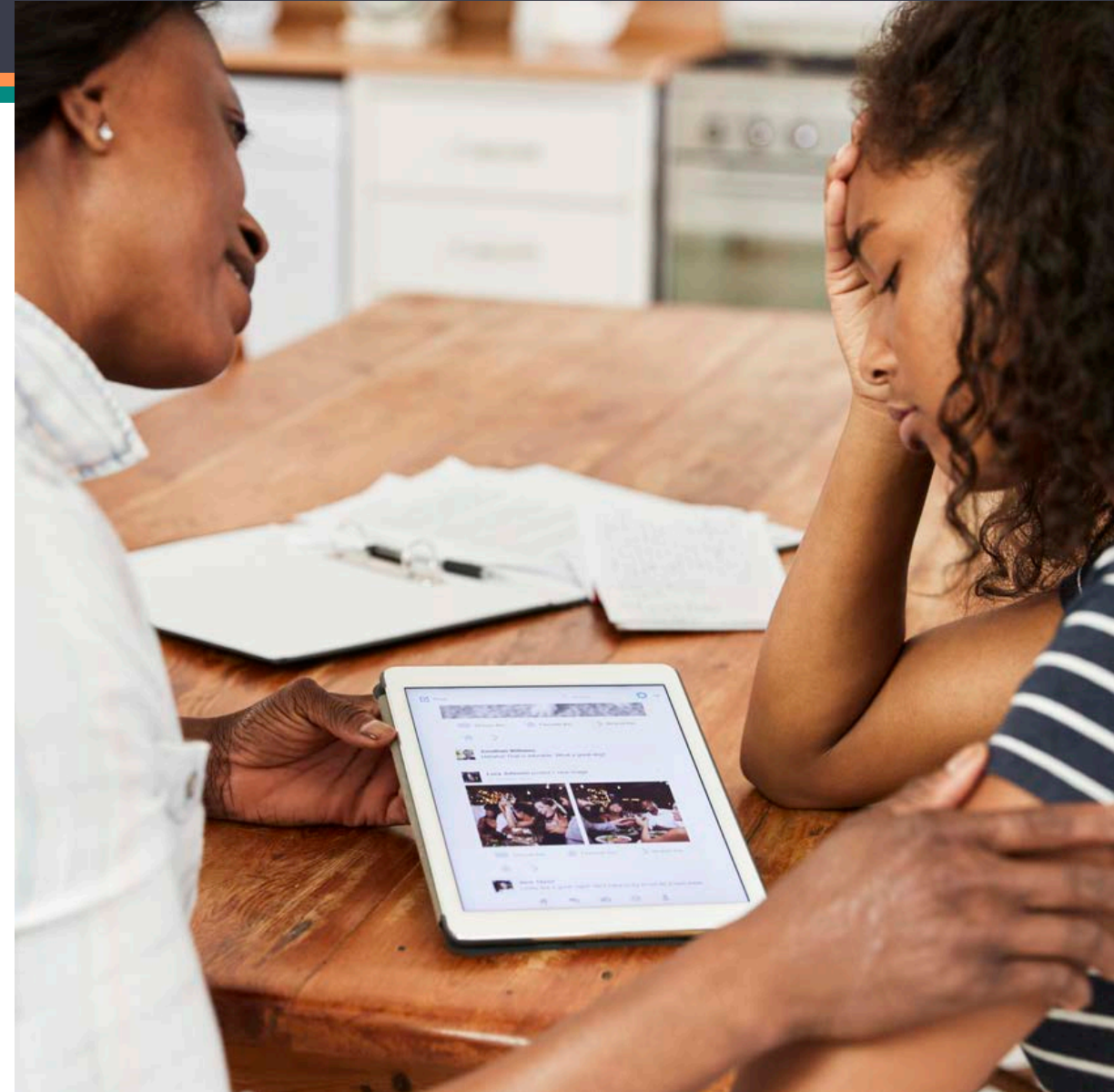


Participation Rates and Eligibility Rules

- 132 participating LEAs
- More than 32,000 students referred per the following:
 - Completely disengaged
 - Irregularly participating
 - In danger of failing 1 or more classes
 - Attendance for Success Tier 3
 - McKinney Vento or foster care
 - Family Request

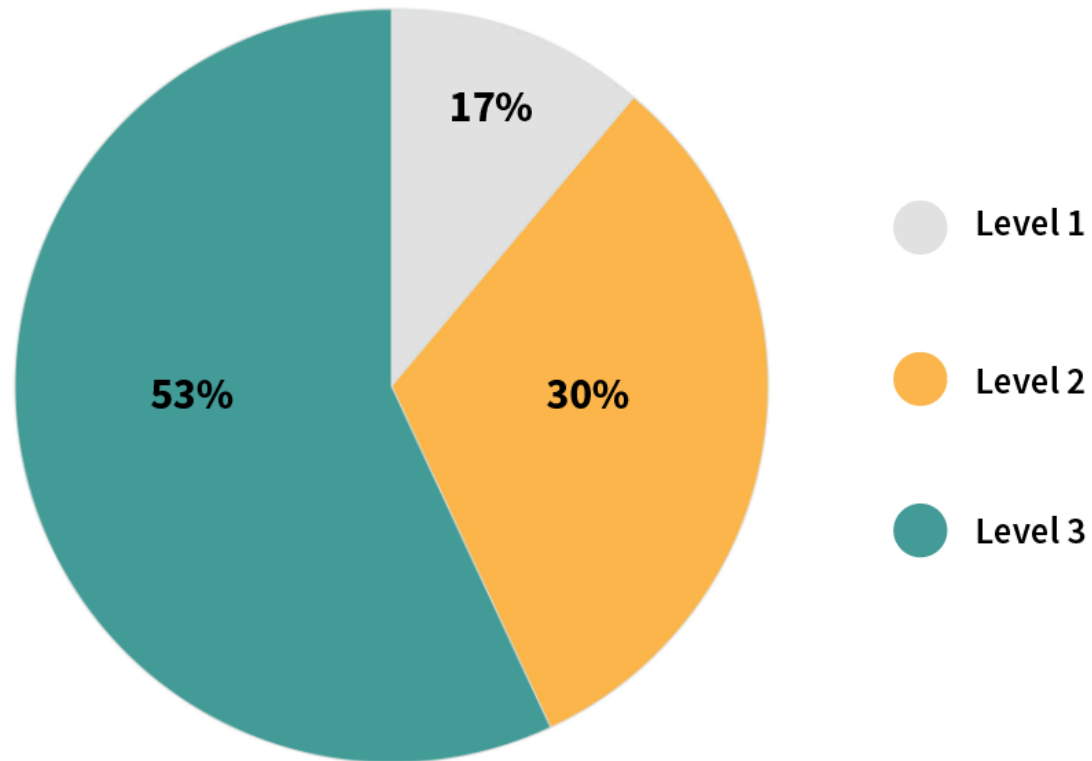
STUDENT OUTREACH

More Than **105,000**
Attempts to Contact Students



On-Going Support

Percentage of Students by Support Level Across All Grades



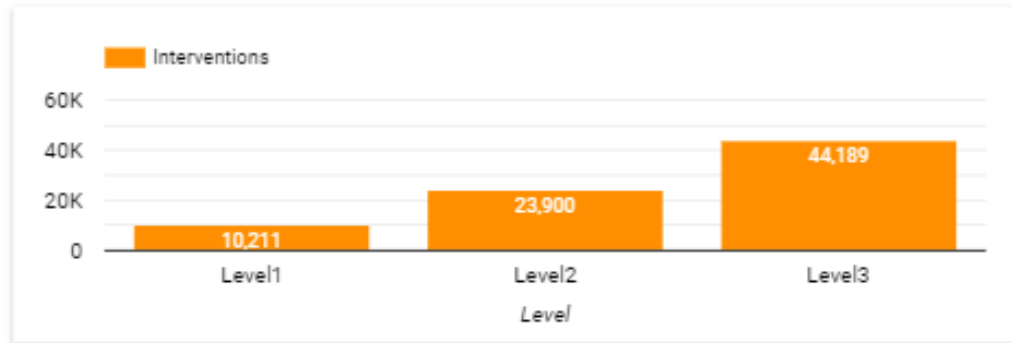
Level 1 – General proactive outreach and intervention

Level 2 – Intervention targeted around specific risk issues

Level 3 – Intensive intervention for multiple risk issues

Intervention Response

Interventions
78,300



Gr

Avg. Interventions/Student
8.29

Avg. Interventions/Level1
6.8

Avg. Interventions/Level2
8.48

Avg. Interventions/Level3
8.63

% Students w/2-Way Contact
72%

% Level1 w/2-Way Contact
69%

% Level2 w/2-Way Contact
69%

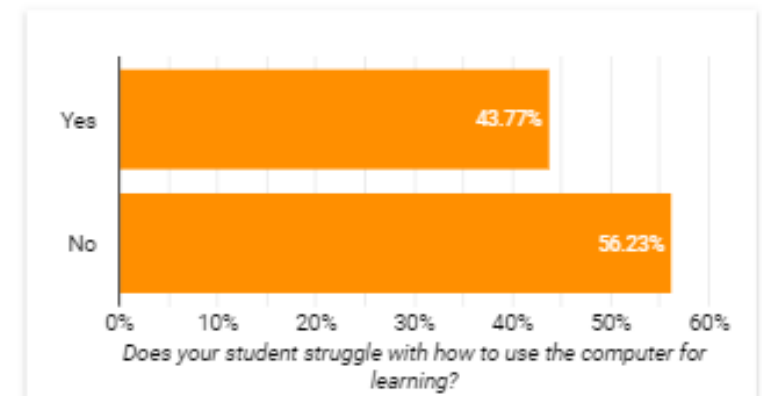
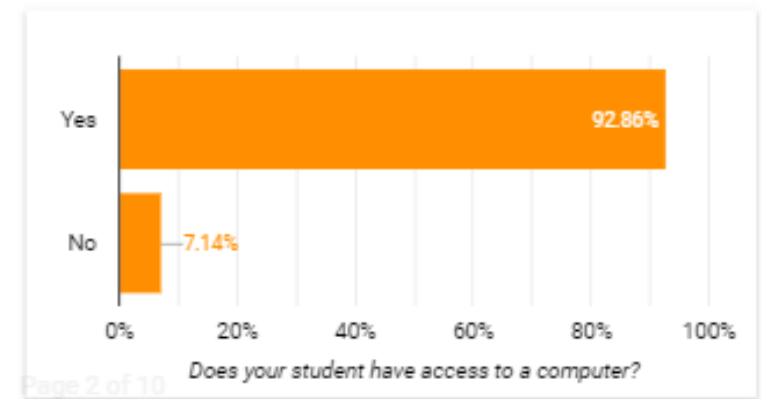
% Level3 w/2-Way Contact
74%

STUDENT SUPPORT

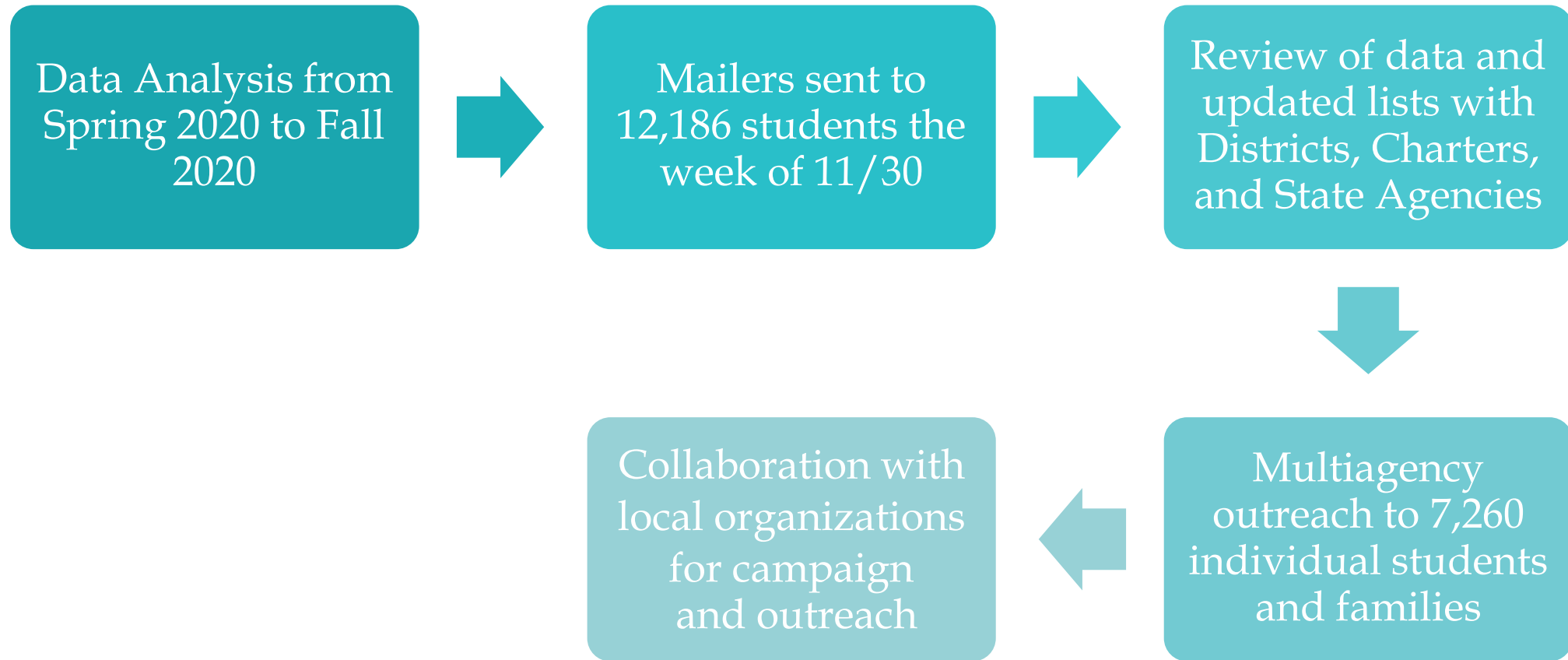
More Than **78,000**
Interventions Conducted

Self-Identified Barriers to Engagement

- Significant improvements in access to technology, both devices and internet
 - 92% compared to 75% in the spring for 6th graders
- Challenges reported by k-5 families in using technology for learning
 - 44% of k-5 families report struggling with using computer for learning
- Family structure remains a challenge
 - 19% of 6-12 students report sibling care responsibilities
 - 16% of 6-12 students report not having an adult checking in on their progress
- More students reporting current housing situation impacted by economic hardship
 - up from five percentage points from the Spring



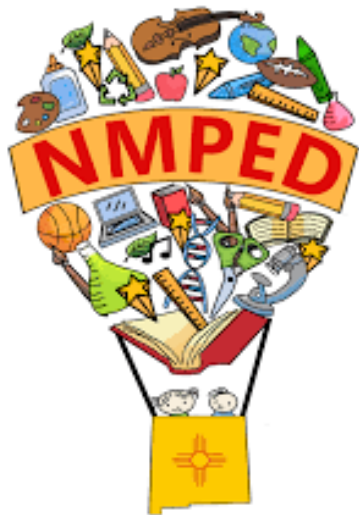
Process to Identify Unaccounted For Students



Unaccounted for Students - Progress

- Early response to disengaged student mailer
 - 738 responses in first 10 days
 - 624 students still in state; 114 families have moved out of state
 - 38 families in need of assistance – referred to CYFD for a FINS
 - 21 students not attending school at all
 - 155 students plan to return to public school next year, additional 144 taking a “wait and see” approach

Interagency Collaboration & Next Steps



Children Youth & Families Department



New Mexico
Indian Affairs
Department



Early Childhood
Education & Care Department



Thank You

