

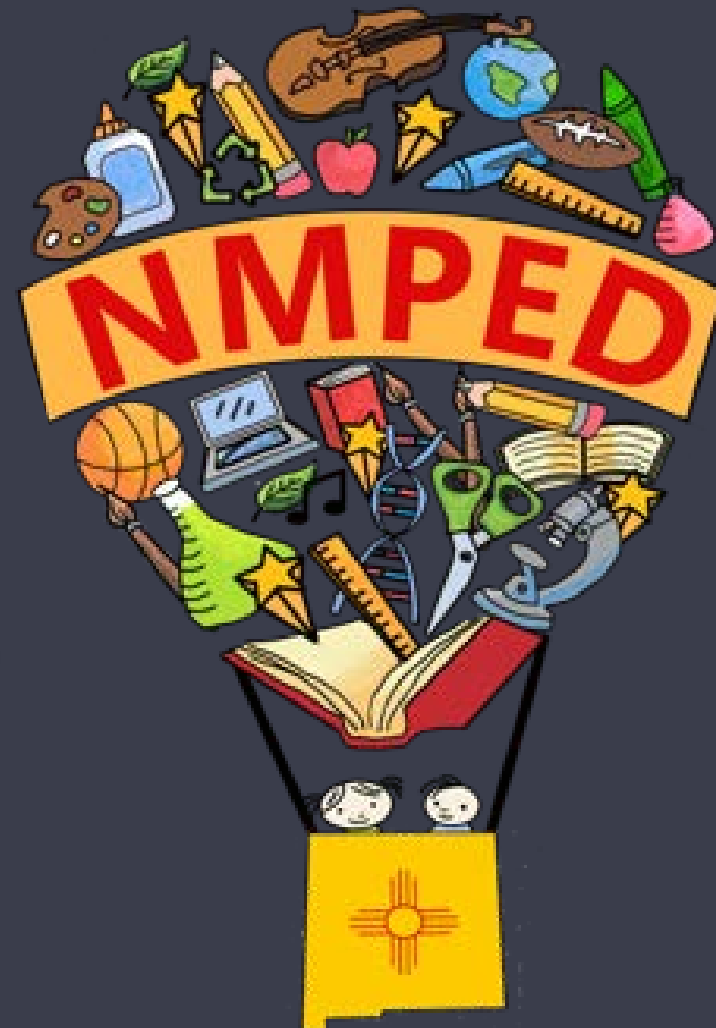
Reopening Public Schools and Enhancing Instruction Time

Legislative Finance Committee

Ryan Stewart, Secretary
Public Education Department

July 16, 2020

Investing for tomorrow, delivering today.



Overview

- NM School Reentry Task Force and Reentry Recommendations
- NM PED Reentry Guidance Document
- Epidemiological Modeling
- Minimum Requirements for Reentry
- Testing and Contact Tracing
- High Risk Staff
- Utilizing CARES Act Funding
- Public Health Gating Criteria for Reopening NM
- Assurances Document for Reentry
- Family and Community Communication

NM School Reentry Task Force

Parents

Teachers

Student

Public
Health
Officials

Super-
intendents

Charter
Leaders

Legislators

Principals

School
Nurses

School
Boards

NMAA

Unions

Tribal
Education

PED Staff

- Task Force members met weekly from May 20, 2020 to June 10, 2020
- Task Force recommendations informed the content and format of the New Mexico Public Education Department Reentry Guidance document

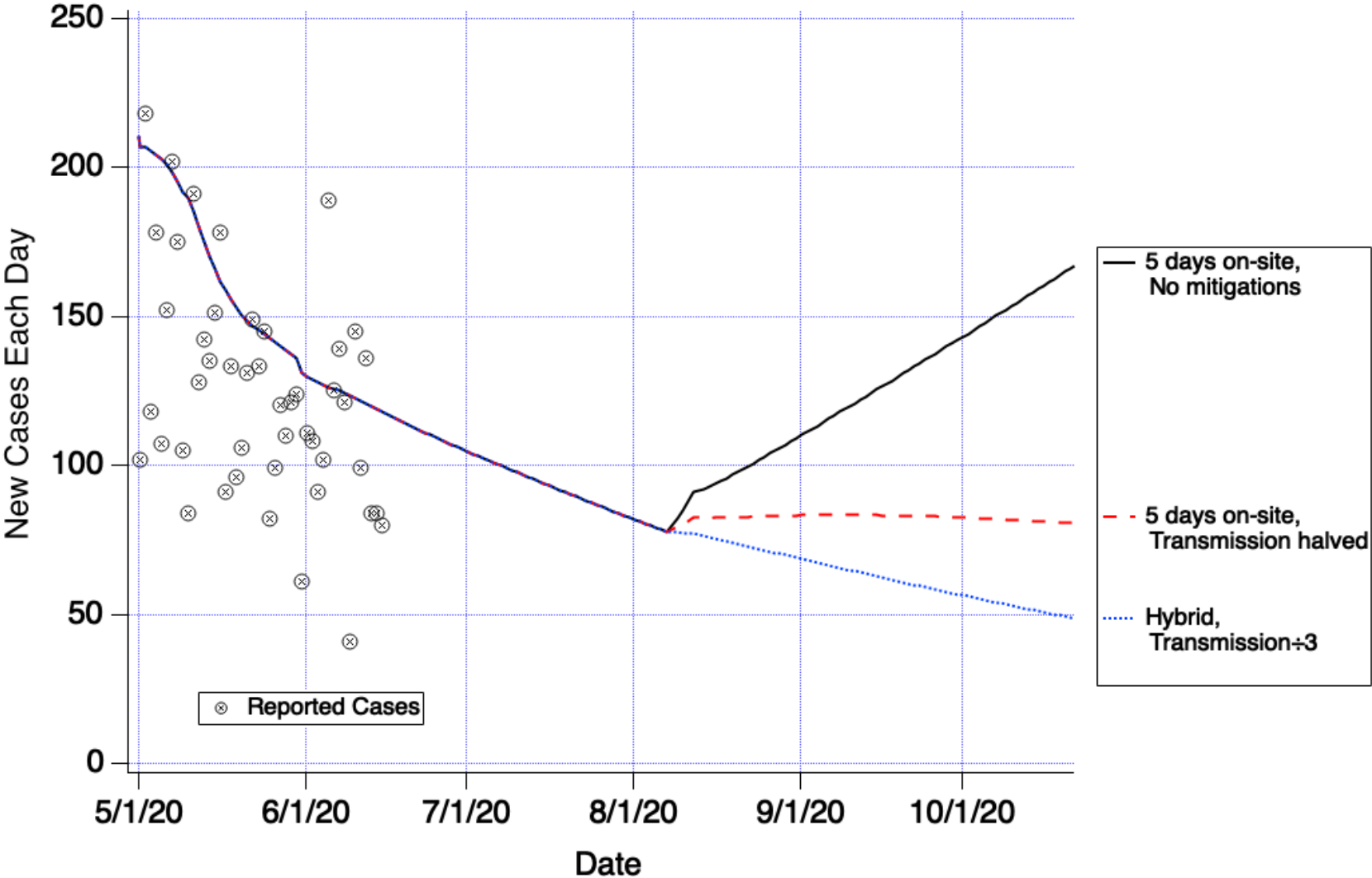
NM School Reentry Task Force Recommendations

- Categories:
 - Safety and Hygiene
 - Meals and Transportation
 - Academics and Student Support
 - Communication, Partnership, and Tribal Collaboration
 - Staffing and Labor

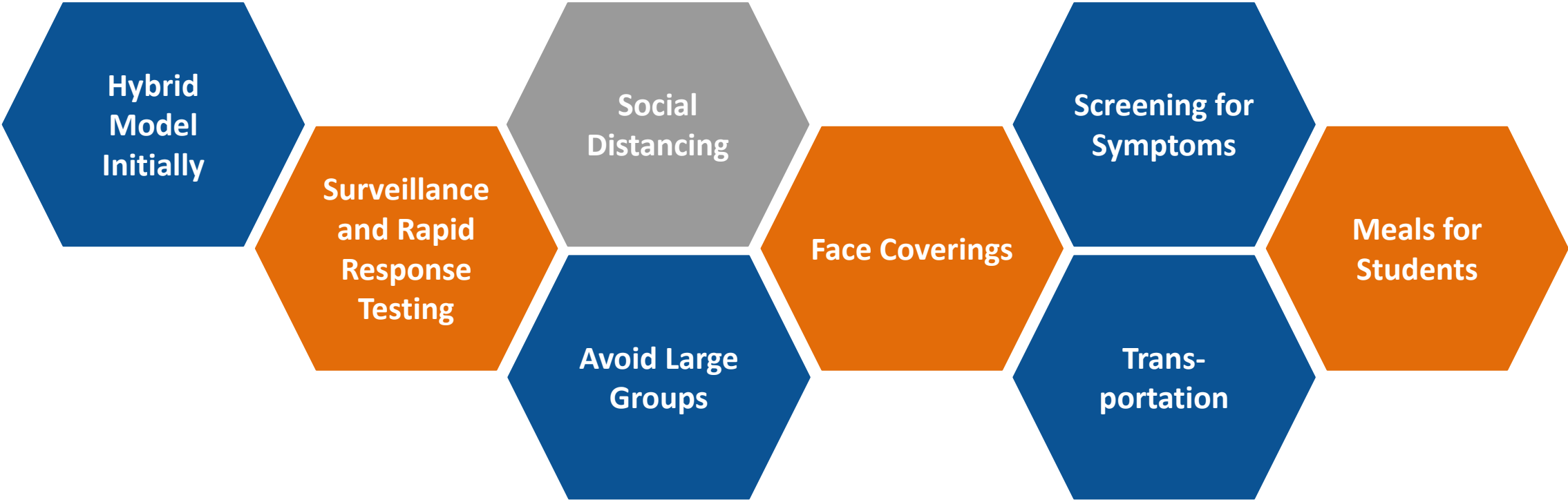
NM PED Reentry Guidance Document

- Guiding Principles:
 - Prioritize the health and safety of our students, staff, and communities
 - Maximize the amount of safe, in-person learning opportunities
 - Make decisions based on science and data
- Beginning August 3, 2020, all schools in the state will be able to start the school year utilizing a hybrid model of instruction

Epidemiological Modeling



Minimum Requirements for Reentry



Testing and Contact Tracing

- Rapid Response Testing
- Surveillance Testing (in high spread areas)
- DOH Contact Tracing
- Close, Clean, Reopen
- COVID-19 School Point Person
- Coordination with Local Public Health Officials
- Communication Resources

High-Risk Staff

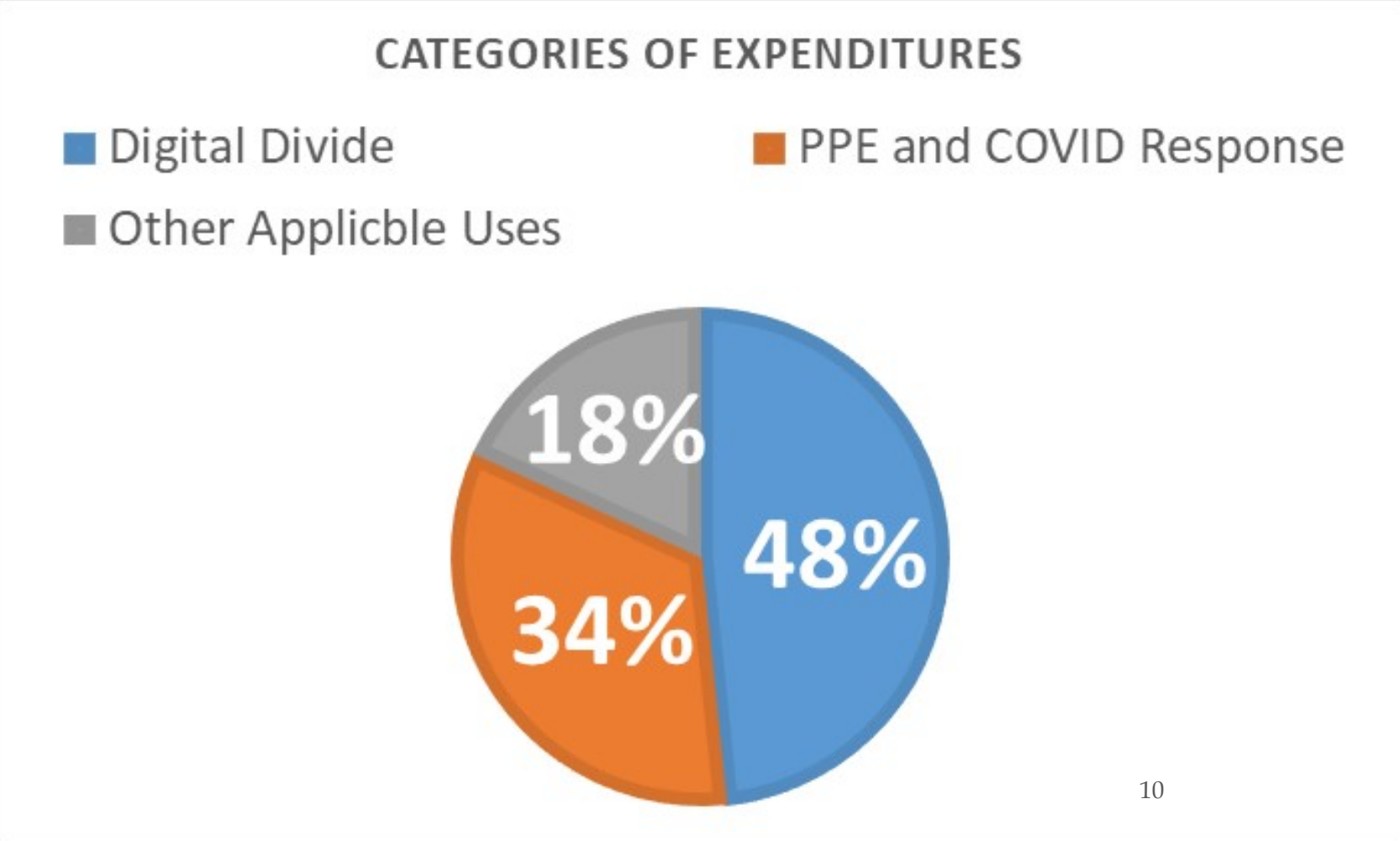
- Educators who are considered to be in a high-risk* group as defined by [CDC guidelines](#) may need to teach from home.
- Districts and charters should have a process in place to identify these educators.
- Districts and charters should establish a process that includes formal requests for a low-contact or virtual option.
- For teachers who live with someone who is in a high-risk group as defined by [CDC guidelines](#), local board policy should be established and will dictate procedures.

*Per CDC: adults 64+, people with asthma, chronic lung conditions, immune deficiency and those receiving cancer treatment, serious heart disease, diabetes, on dialysis, severe obesity, chronic liver disease, people living in nursing facilities and other congregate settings, people experiencing homelessness

Utilizing CARES Act Funding

PED has encouraged districts and charters to focus on closing the digital divide and purchasing PPE.

Categories of Expenditures		
Tech Equipment	\$ 40,734,836	Digital Divide
PD for Distance Ed	\$ 3,043,571	Digital Divide
Mental Health	\$ 1,478,029	
Low Income Students	\$ 1,551,636	
Students w/Disabilities	\$ 1,366,465	
ELL	\$ 814,817	
Native American Students	\$ 390,325	
Minority Students	\$ 349,566	
Homeless/Foster	\$ 278,469	
Summer/After-School	\$ 2,272,757	
School Leaders	\$ 2,510,278	
CTE	\$ 523,033	
Adult Ed	\$ 15,000	
Family Literacy	\$ 312,539	
COVID Collaboration	\$ 625,513	PPE and COVID Response
COVID Procedures/Systems	\$ 5,565,171	
Training on COVID	\$ 345,319	
PPE, Supplies, and Sanitization	\$ 19,359,892	
COVID Closure Planning	\$ 2,078,576	
Continuity Activities and PPE	\$ 2,303,830	
Other ESEA	\$ 4,580,979	
Total	\$ 90,500,603	



Utilizing CARES Act Funding

- Statewide Online Learning Management System
- Support for Disengaged and At-Risk Students
- Childcare Support
- Closing the Digital Divide
- Supplemental PPE Support
- Social and Emotional Support
- Special Education
- And more...

Public Health Gating Criteria for Reopening NM

Category	Measure	Target
Spread of COVID-19	1. Rate of Spread	1.05 or less
Testing Capacity (general and vulnerable populations*)	2. Number of COVID-19 tests per day (7-day rolling average)	5,000
Contact Tracing and Isolation Capacity	3. Time from COVID-19 positive test result to case isolation	24 hours or less
Contact Tracing and Isolation Capacity	4. Time from COVID-19 positive test result to quarantine of case contacts	36 hours or less
Statewide Healthcare System Capacity	Adult ICU Beds occupied across 7 NM Hub Hospitals**	Less than 460
Statewide Healthcare System Capacity	6. 7-day supply of personal protective equipment (PPE) across 7 NM Hub Hospitals**	7-day supply in at least 6 out of 7 Hub Hospitals

Assurances Document for Reentry

Due Date
July 15, 2020

Adherence to health
and safety
requirements

Plans for remote
learning

Social emotional
learning plan

Extended school
year plan
(or plan for making up for
lost time)

Instructional plan

Family and Community Communication

- How will you keep families informed about changing circumstances?
- How will you support families and caregivers as they facilitate learning and the social-emotional needs of students at home?
- How will you ensure families and students are supported in multiple, appropriate languages?
- How will you collaborate with childcare providers to support families' access to childcare?

Thank You!

Ryan Stewart, Ed.L.D.
Secretary of Education

