



NEW MEXICO SENTENCING COMMISSION

Trends in Arrests and Correctional Populations: A look at New Mexico Department of Public Safety and New Mexico Corrections Department Data



Why New Mexico Sentencing Commission

- NMSC serves as a criminal and juvenile justice policy resource to the three branches of state government and interested citizens.
- Our mission is to provide impartial information, analysis, recommendations, and assistance from a coordinated cross-agency perspective with an emphasis on maintaining public safety and making the best use of our criminal and juvenile justice resources.

- The Commission is made up of representatives from the criminal justice system, including members of the Executive and Judicial branches, legislators' appointees, law enforcement officials, criminal defense attorneys, and citizens.
- New Mexico Corrections Department and New Mexico Department of Public Safety are both represented on our commission and are research partners.

NMSC Data Rule (10.14.2 NMRA)

- The data rule applies to state, county, and municipal agencies that possess criminal or juvenile justice data.
- The rule is based on the NMSC's enabling statutes (9-3-10 and 9-3-10.1 NMSA 1978), as well as the separate statute on access to arrest record information (29-10-6 NMSA 1978) and the reporting requirements charged to the NMSC in the base statute on sentencing authority for noncapital felonies (31-18-15 NMSA 1978).

- The rule establishes procedures for the NMSC to collect, analyze, and disseminate this data to support the provision of information to the Executive, Judicial, and Legislative branches on policy matters related to criminal and juvenile justice.
- NMSC may request data for special research products.
- The data rule provides certain safeguards for agency data.

Research Data Repository

- NM DPS Arrest Data – Receive quarterly 2001 – present
- NMCD Admissions, Releases, Supervision starts, and supervision violations 2005 – present

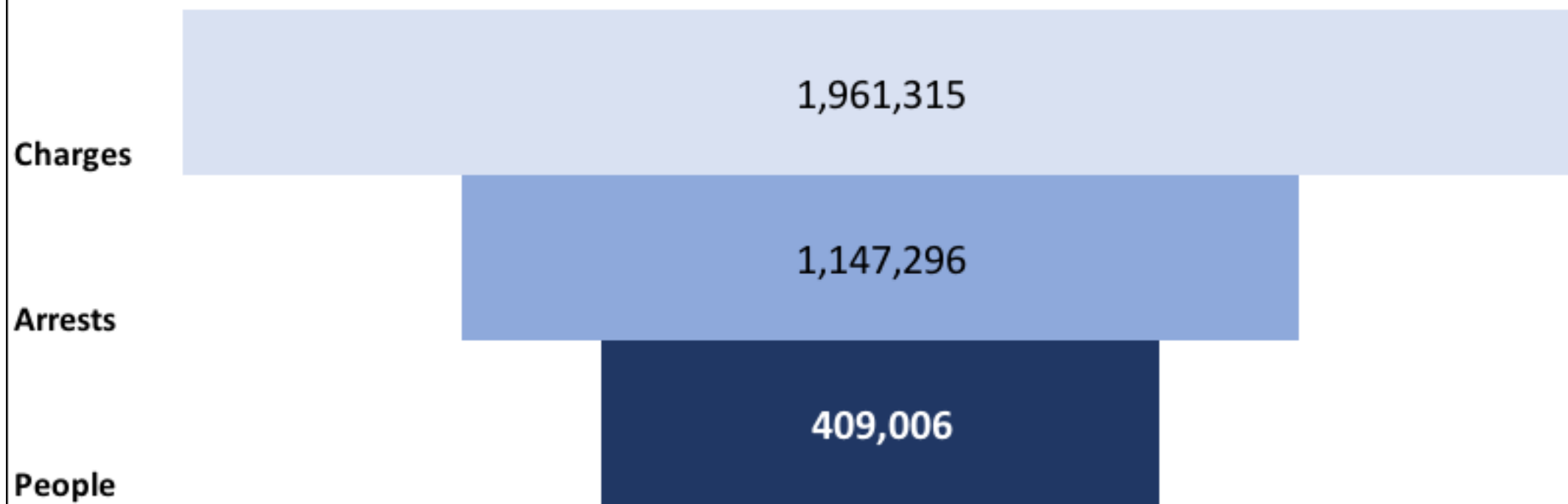
DPS Arrest Data

- Fingerprint supported data submitted by detention centers and law enforcement agencies at the point of arrest.
- Generally warrants are not entered with the exception of probation parole violations.

Current NMSC and DPS Project

- NMSC will analyze data from 2001 – 1st Quarter of 2018 to estimate the completeness of the information by county and law enforcement agency
- Data is valuable to look at individual arrest history

Analysis of Arrest Data January 1, 2001 - March 31, 2018

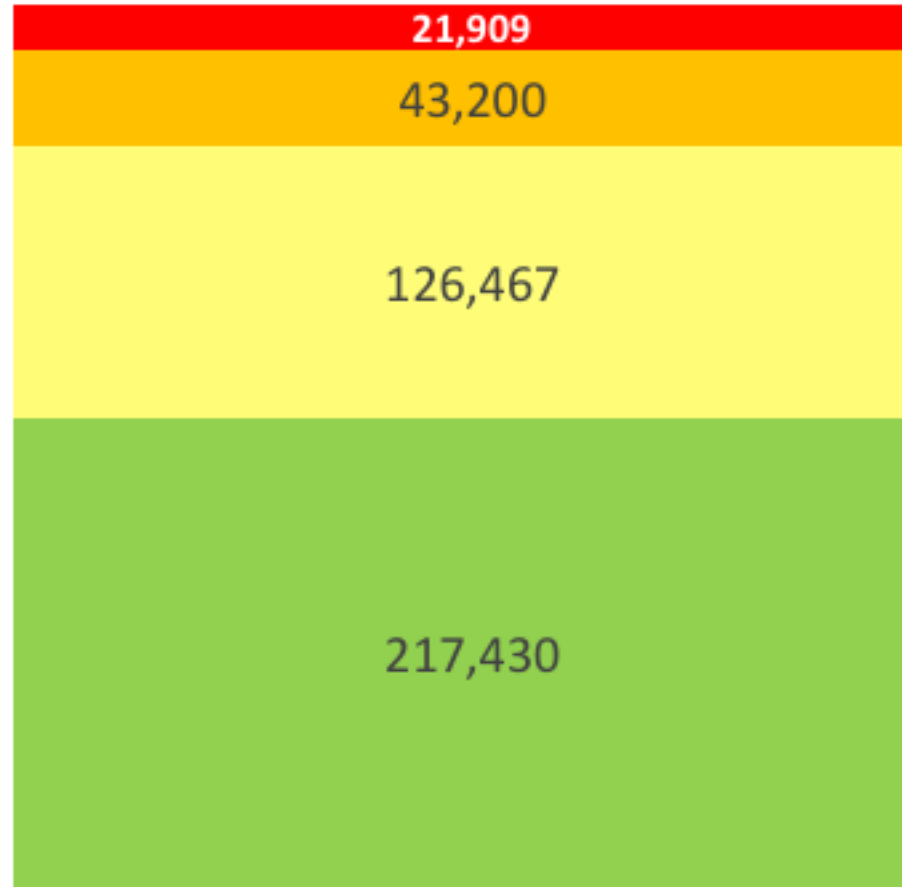


Analysis of Arrest Frequency

16% were arrested 5 or more times

30.9% were arrested 2-4 times

53.2% were arrested once



■ 10 or more

■ 5-9 times

■ 2-4 times

■ Once

The 21,900 individuals that were arrested 5 or more times, comprise:

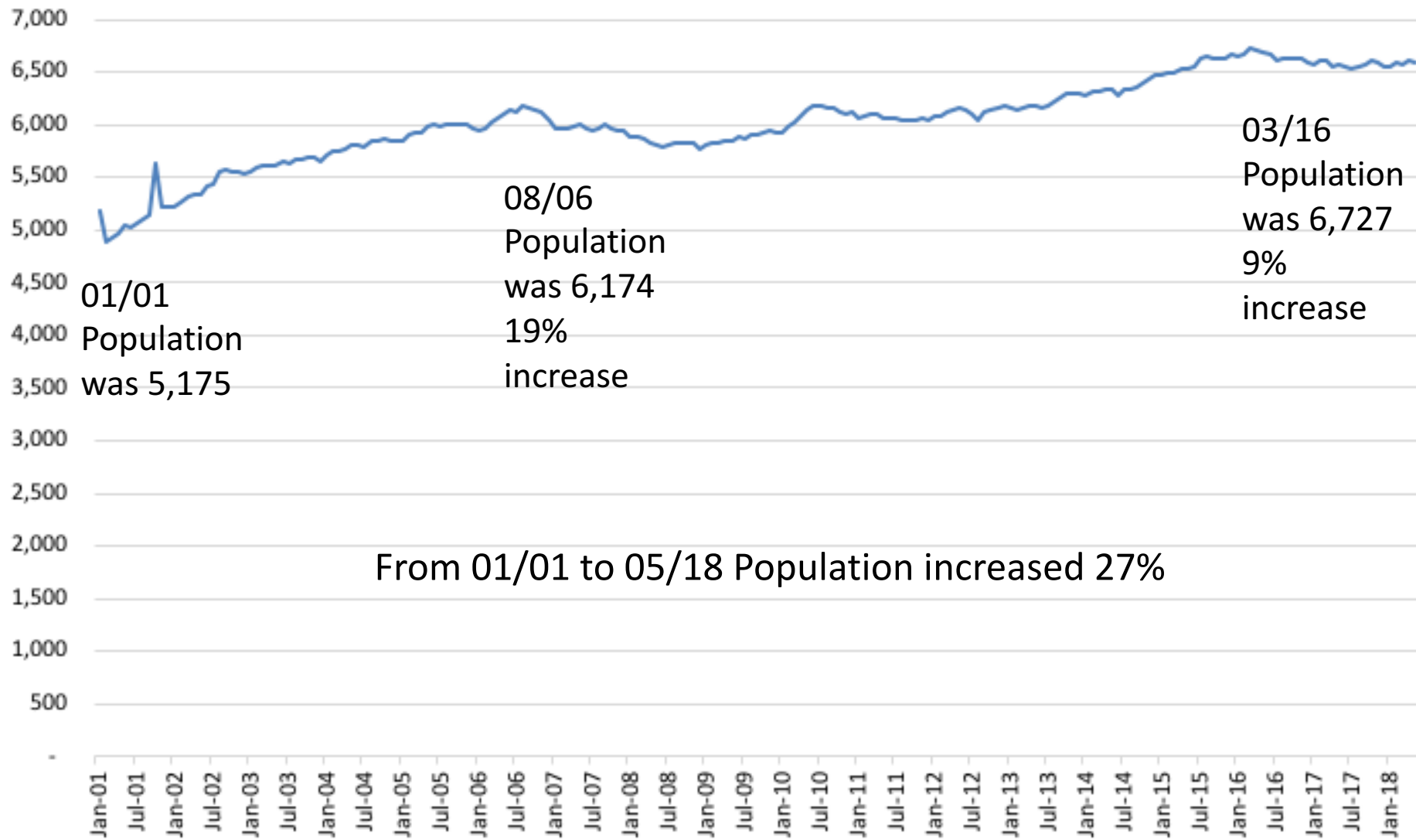
- 30% of all charges
- 28% of all arrests
- 46% were arrested in 3 or more counties

New Mexico Corrections Department Data

First we will start by talking about historical trends.

We will look at the men's and women's populations separately.

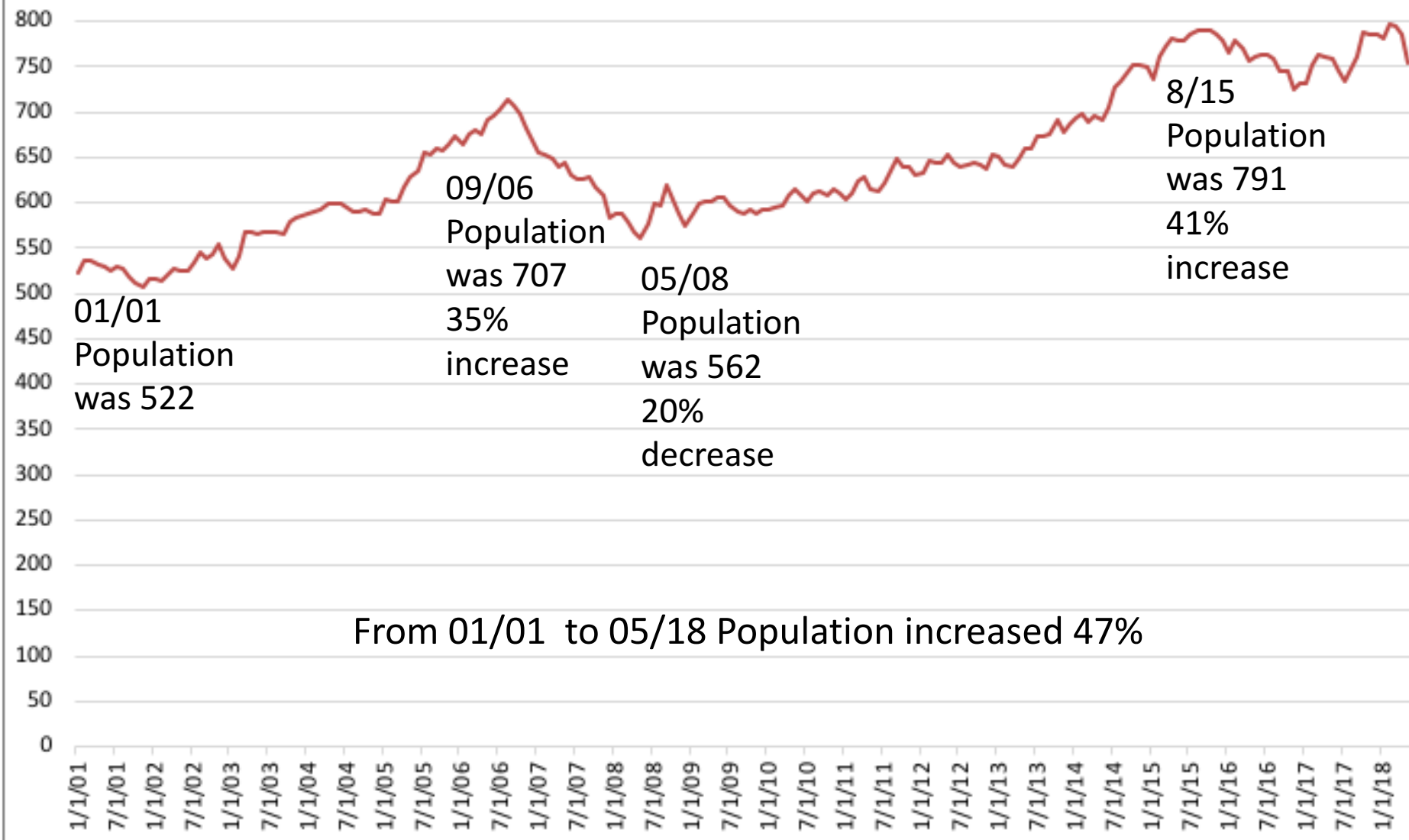
Monthly High Total Male Prison Population



05/18
Population
was 6,599
2%
decrease

From 01/01 to 05/18 Population increased 27%

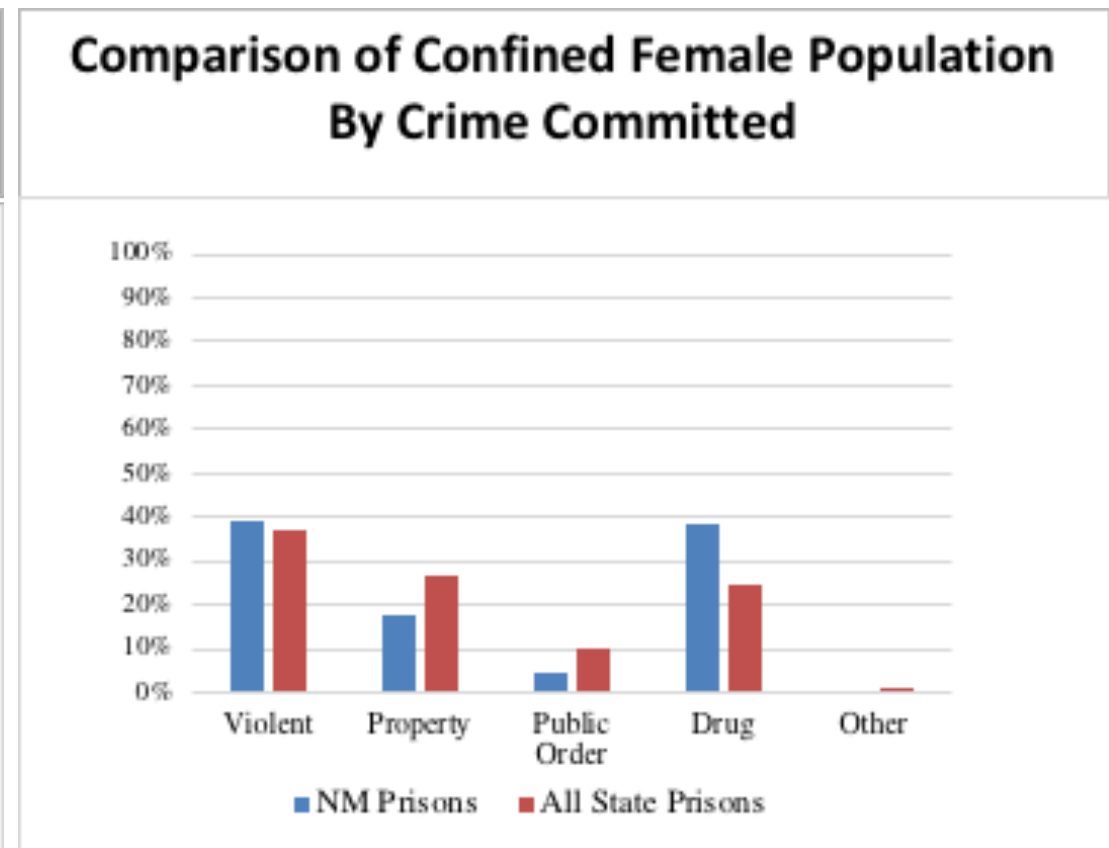
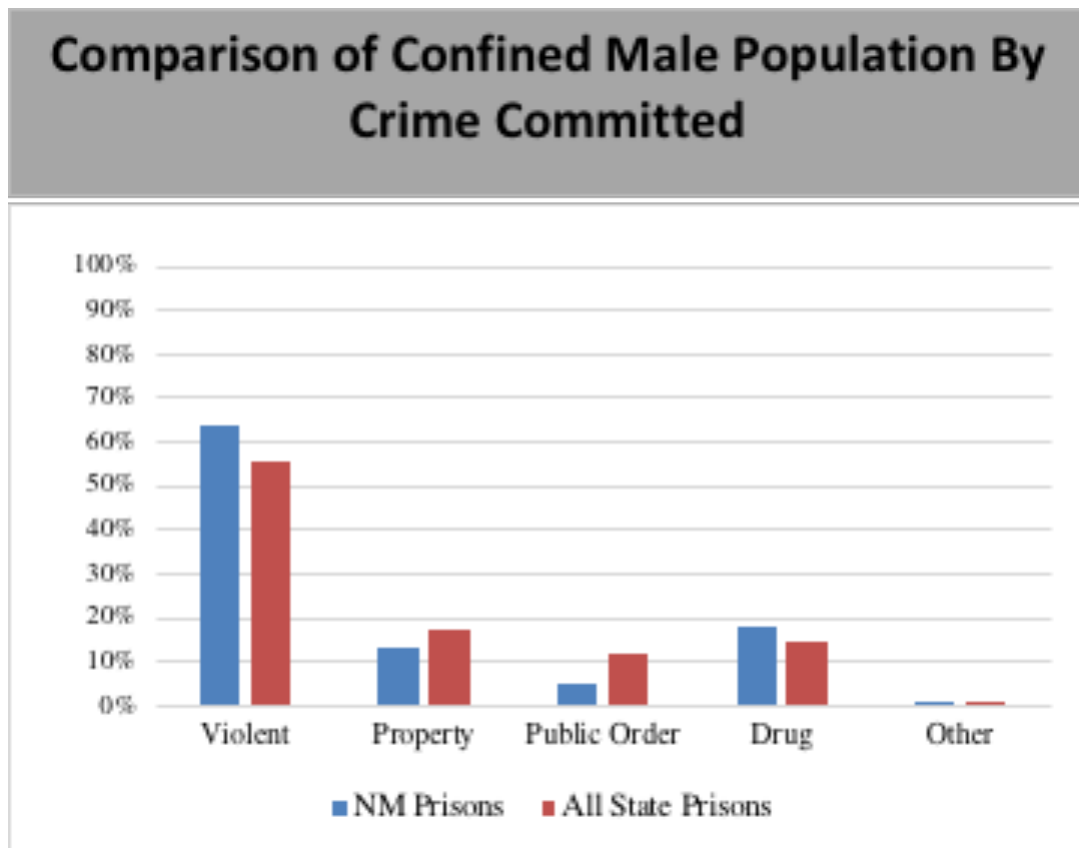
Monthly High Total Female Prison Population



02/18
Population
was 797, but
had dropped
to 755 by
05/18
5% decrease
in 3 months

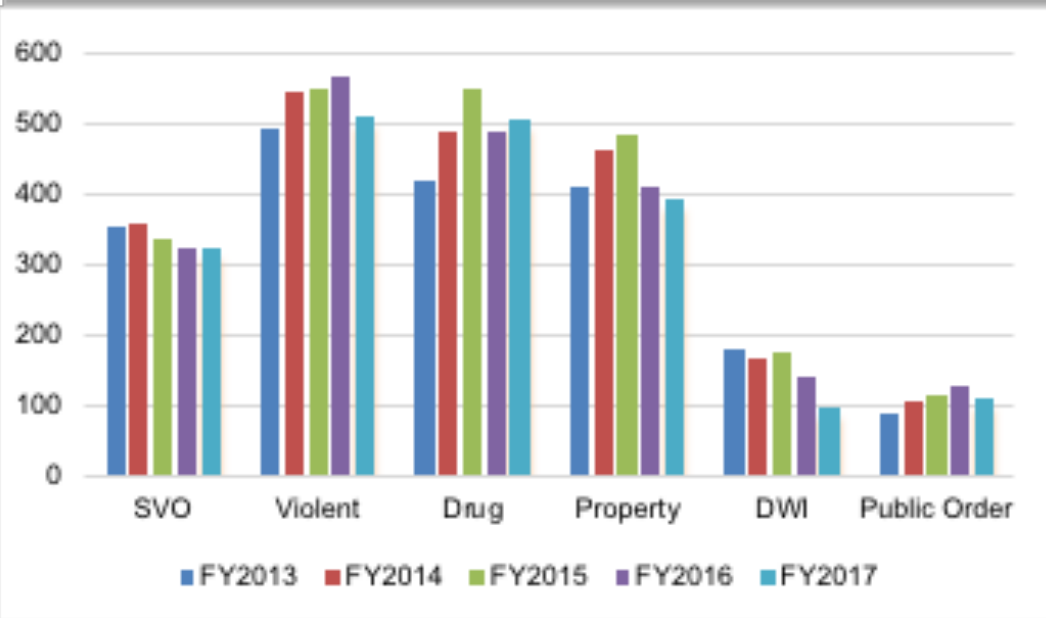
Factors affecting growth in prison population

Compared to other state prisons, NM houses a larger proportion of violent offenders.

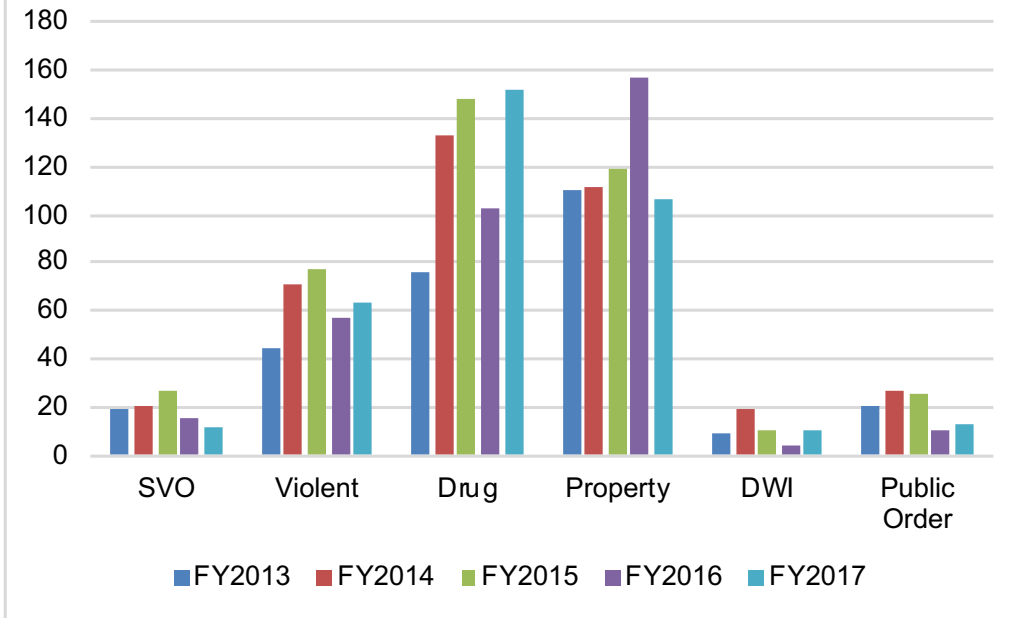


Admissions Trends over the last 5 years

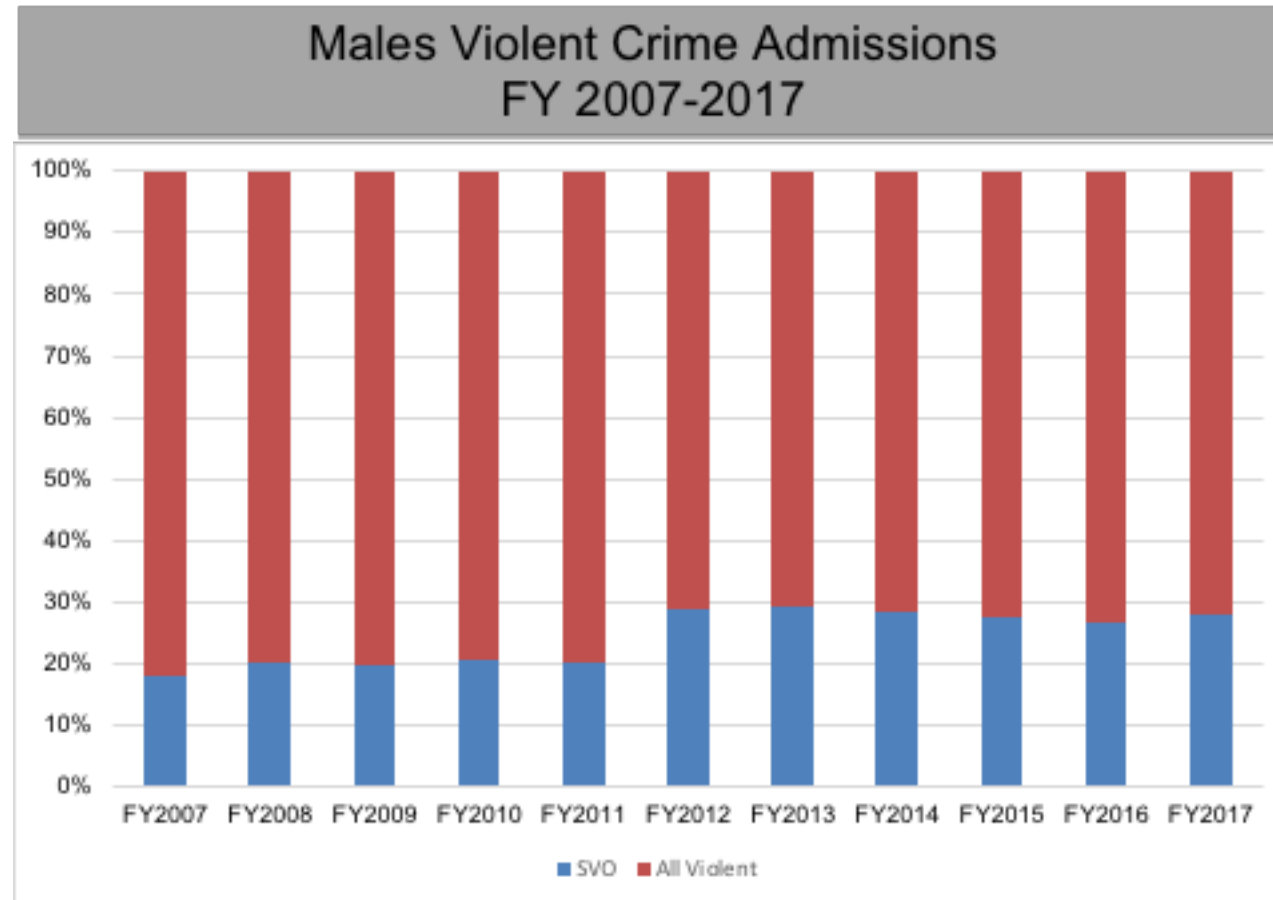
Males New Admissions by Charge Type and Year (FY 2013-2017)



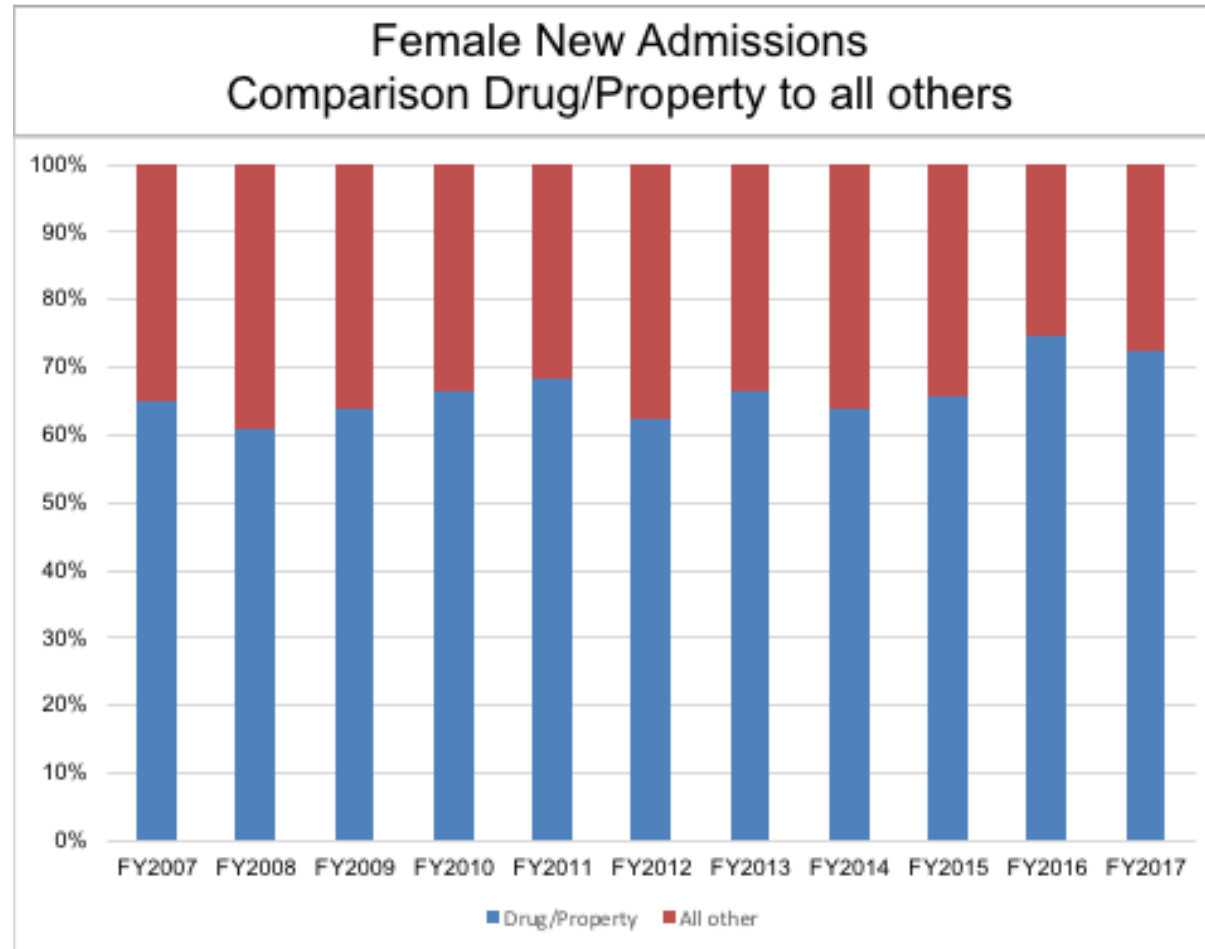
Females New Admissions by Charge Type and Year (FY2012-2017)



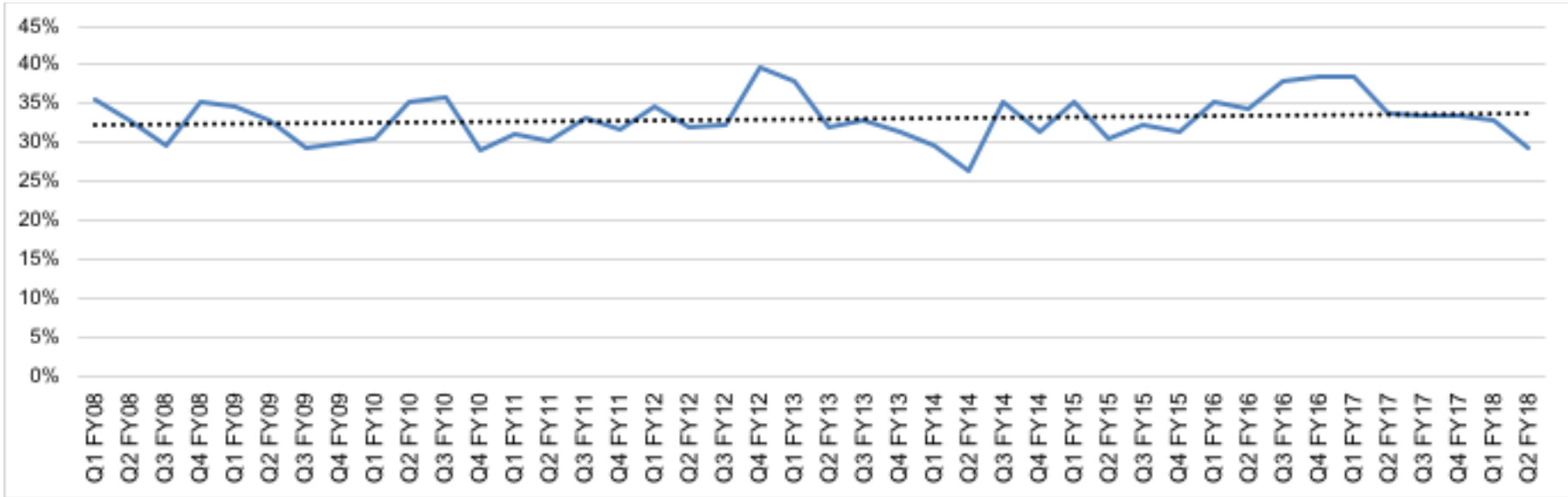
Looking at admissions for violent crimes, the proportion of Serious Violent Offender has increased



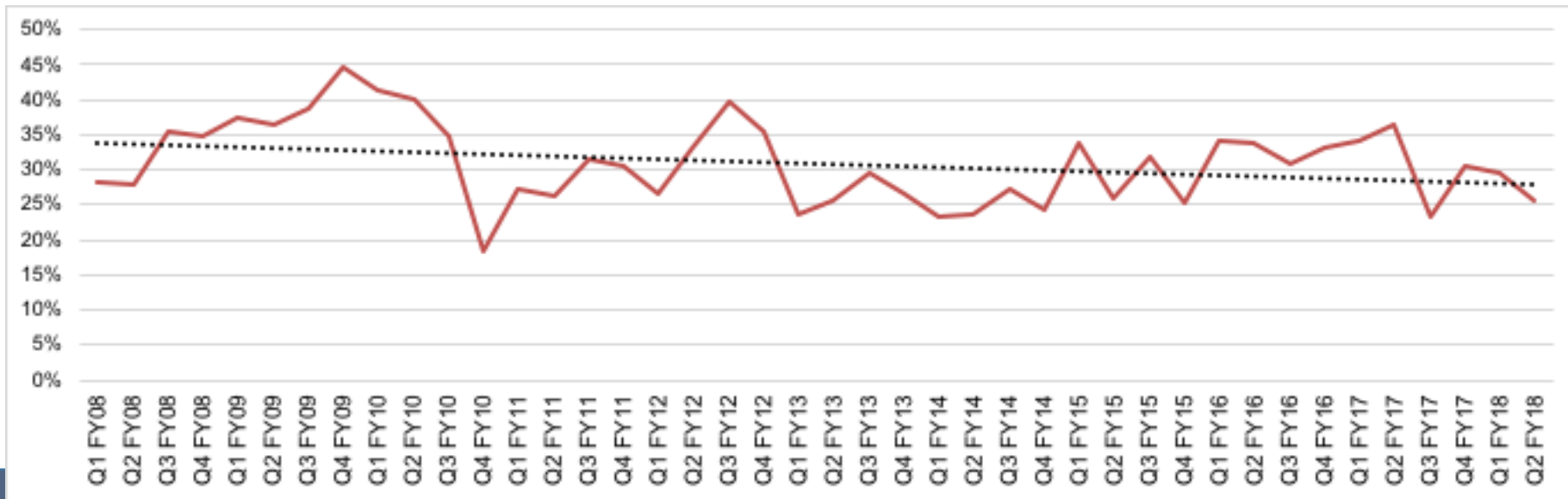
The proportion of all violent admissions has not increased among females. Percentage of drug/property has increased.



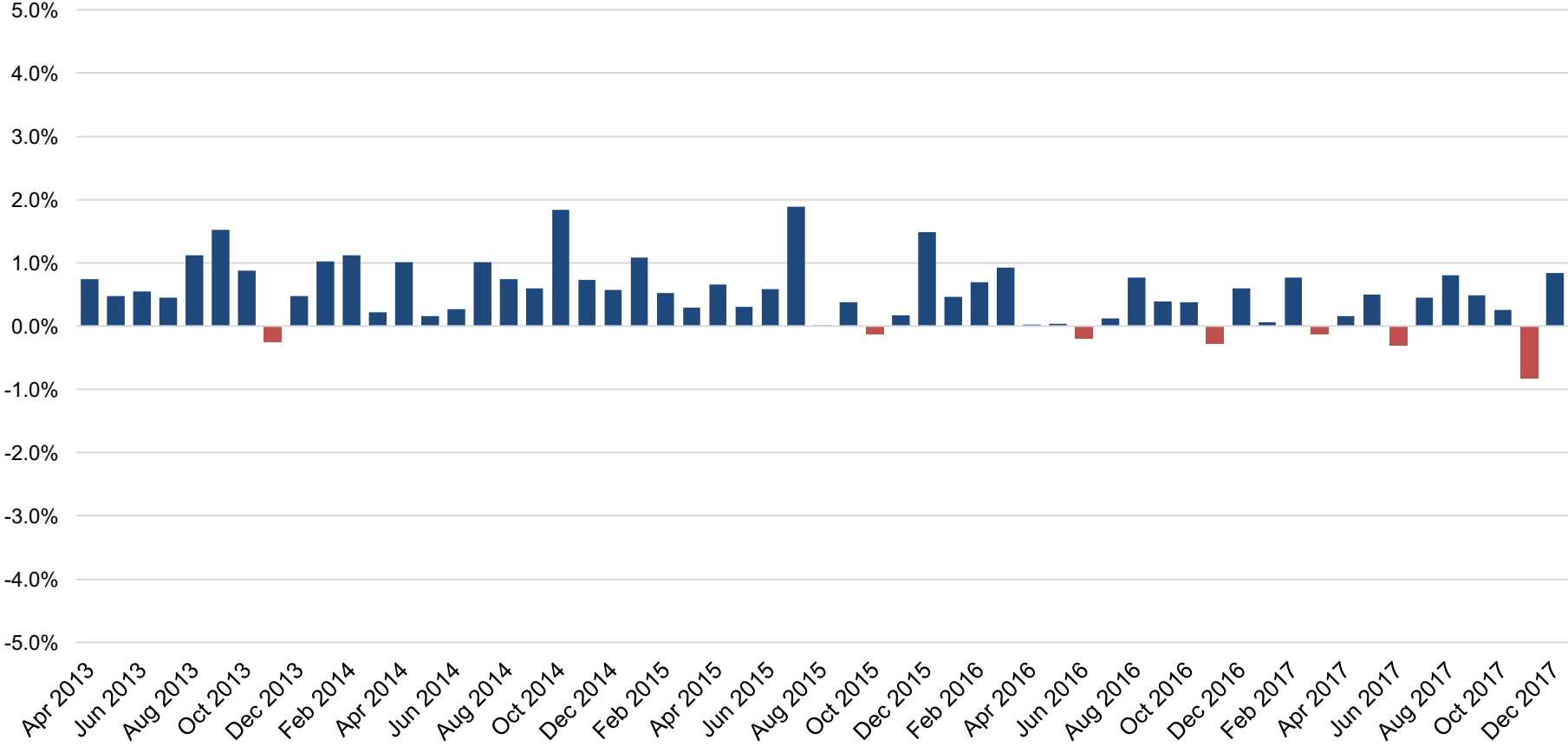
Male Percentage of Parole Admissions FY08 - FY18



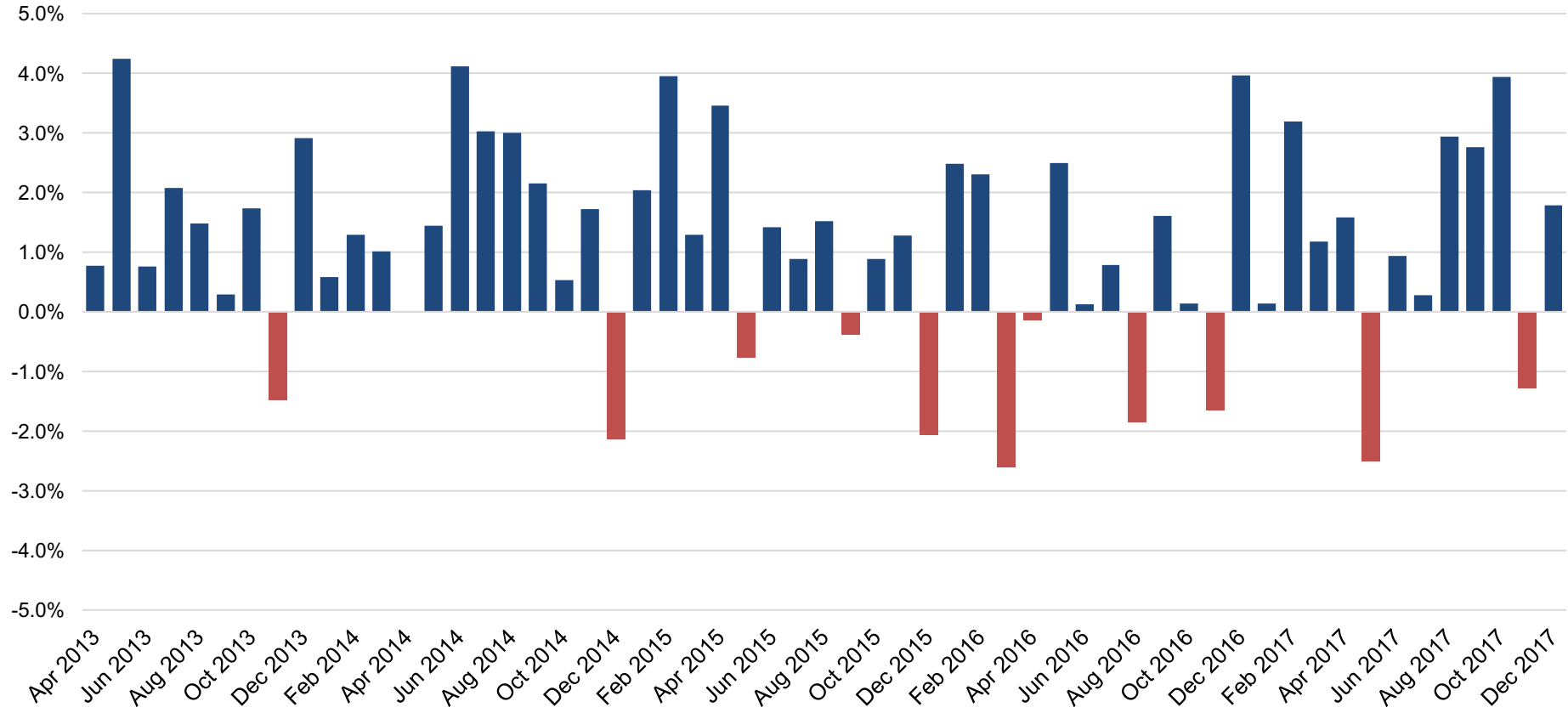
Female Percentage of Parole Admissions FY08 - FY18



Monthly Male Net Change (Admissions-Releases)



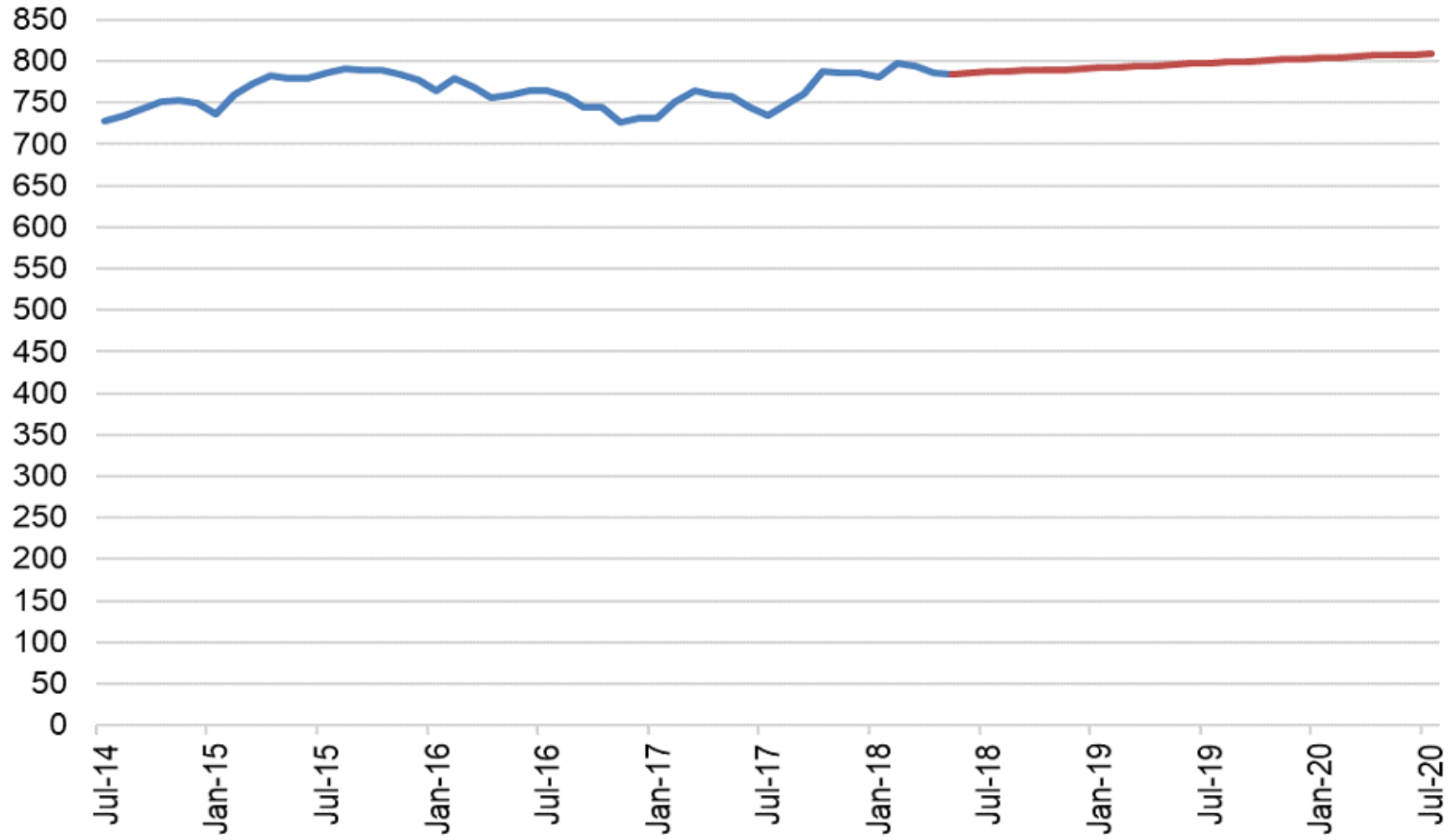
Monthly Female Net Change (Admissions-Releases)



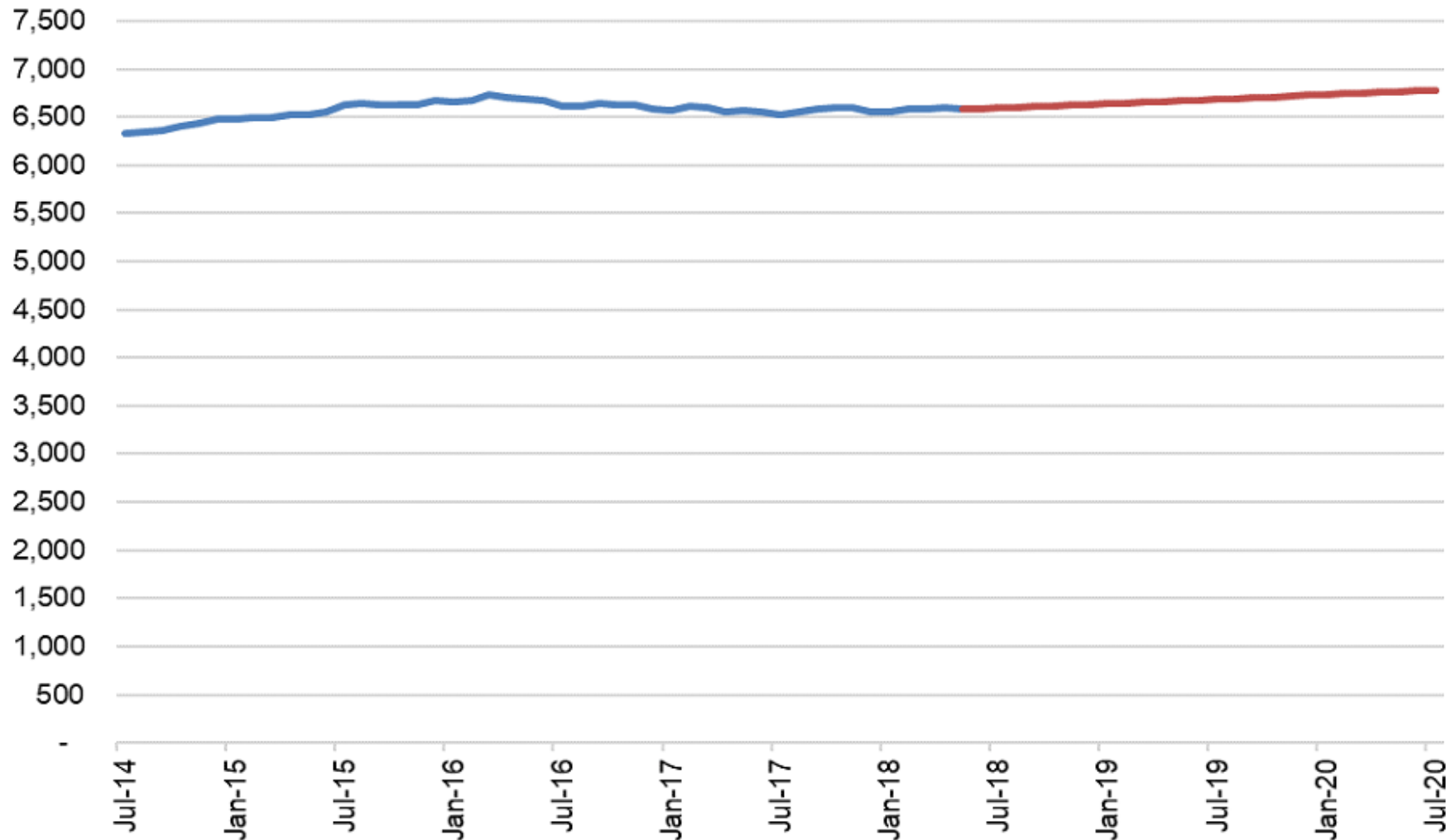
Looking at all offenders admitted for a new admission that were released in FY 2017:

- Males – Median length of stay from admission to release was 546 days, approximately 18 months.
- Females - Median length of stay from admission to release was 409 days, approximately 13½ months.

Actual Female Prison Population and Forecast: July 2014 to July 2020



Actual Male Prison Population and Forecast: July 2014 to July 2020



Males

Cohort	Number Released	Number of Recidivists	3 year rate	Number of Recidivists	Overall rate through 3/31/2015
FY 2007	3,022	1,344	44.5%	1,642	54.3%
FY 2008	3,120	1,362	43.7%	1,660	53.2%
FY 2009	2,962	1,358	45.8%	1,580	53.3%
FY 2010	2,936	1,354	46.1%	1,555	53.0%
FY 2011	2,984	1,412	47.3%	1,525	51.1%

Females

Cohort	Number Released	Number of Recidivists	3 year rate	Number of Recidivists	Overall rate through 3/31/2015
FY 2007	507	169	33.3%	211	41.6%
FY 2008	463	196	42.3%	223	48.2%
FY 2009	472	193	40.9%	237	50.2%
FY 2010	433	142	32.8%	171	39.5%
FY 2011	406	155	38.2%	166	40.9%