



New Mexico Corrections Department Probation/Parole Update

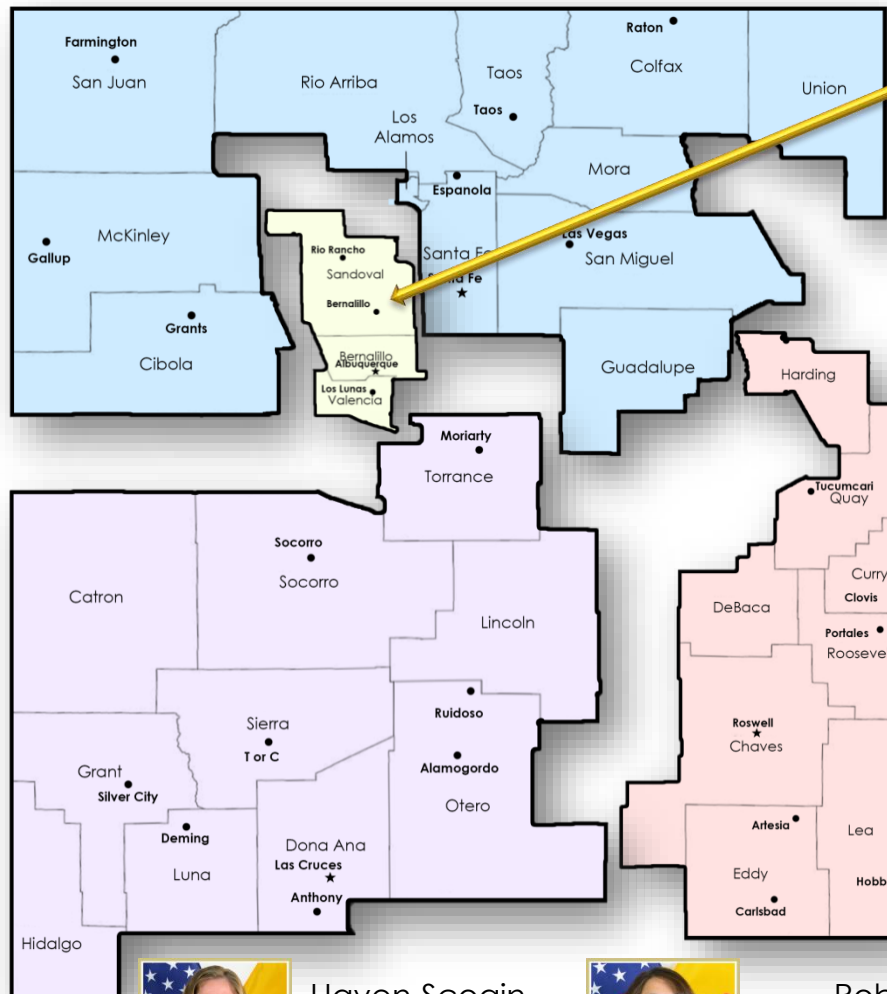
Courts, Corrections, and Justice Committee

September 14, 2020

Probation/Parole Region Map

Region I

Labriana Belmontes
Region I
Manager



Region II

Cheryl Hobbs
Region II
Manager
Standard
Supervision



Carl Wilken
Region II
Manager Special
Programs



Region III

Stephanie Vincenti
Region III
Manager



Region IV

Susan Pautler
Region IV
Manager



Haven Scogin
Community
Corrections
Administrator



Roberta Cohen
NM Interstate Compact Office
Compact Administrator/
Commissioner



Community Corrections Administration



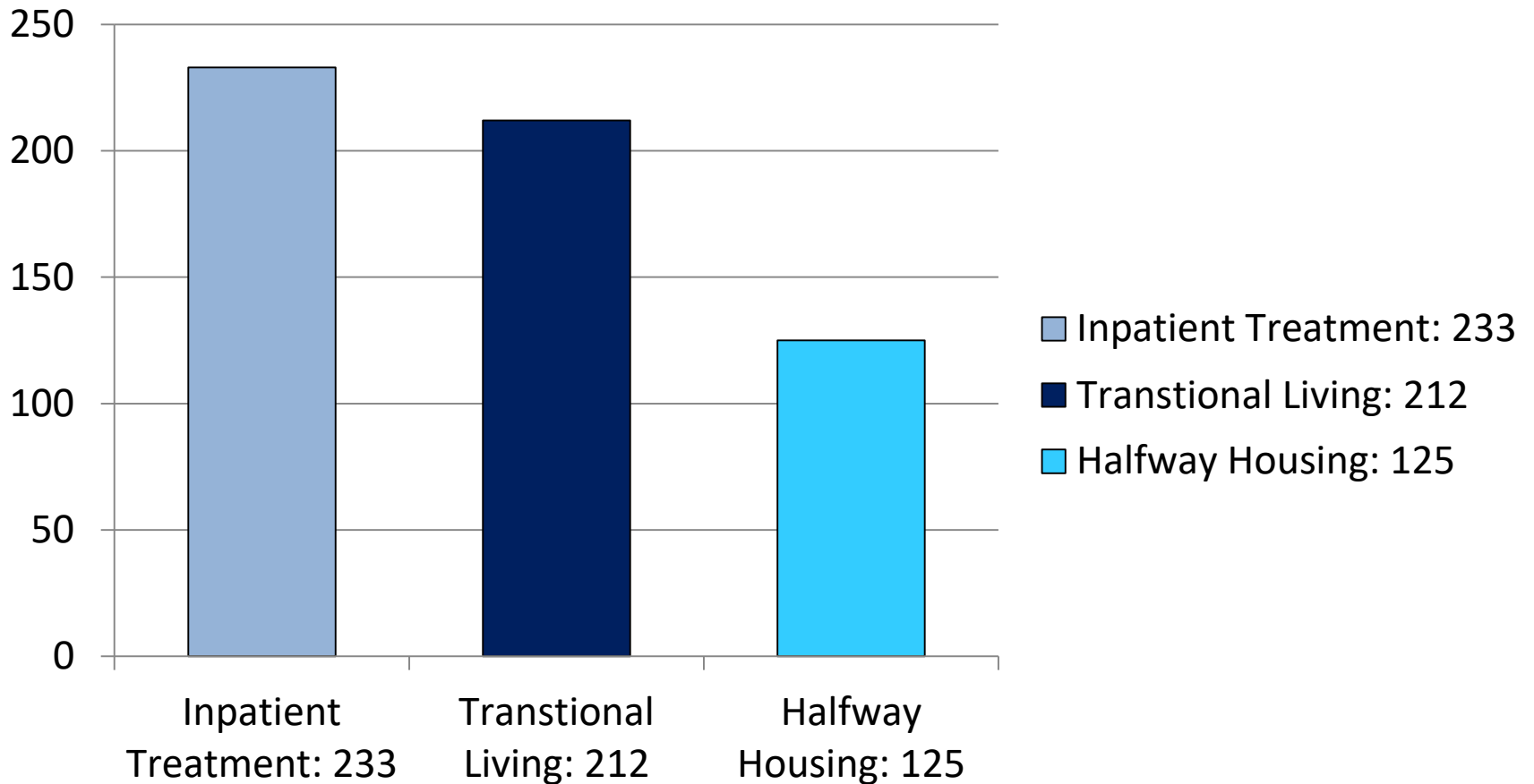
- 20 Contracted Housing and Behavioral Health Providers

- FY 2021 Budget:
\$7,443,886.64

- Services Available to
15,000+ clients Statewide

Housing Provided Monthly

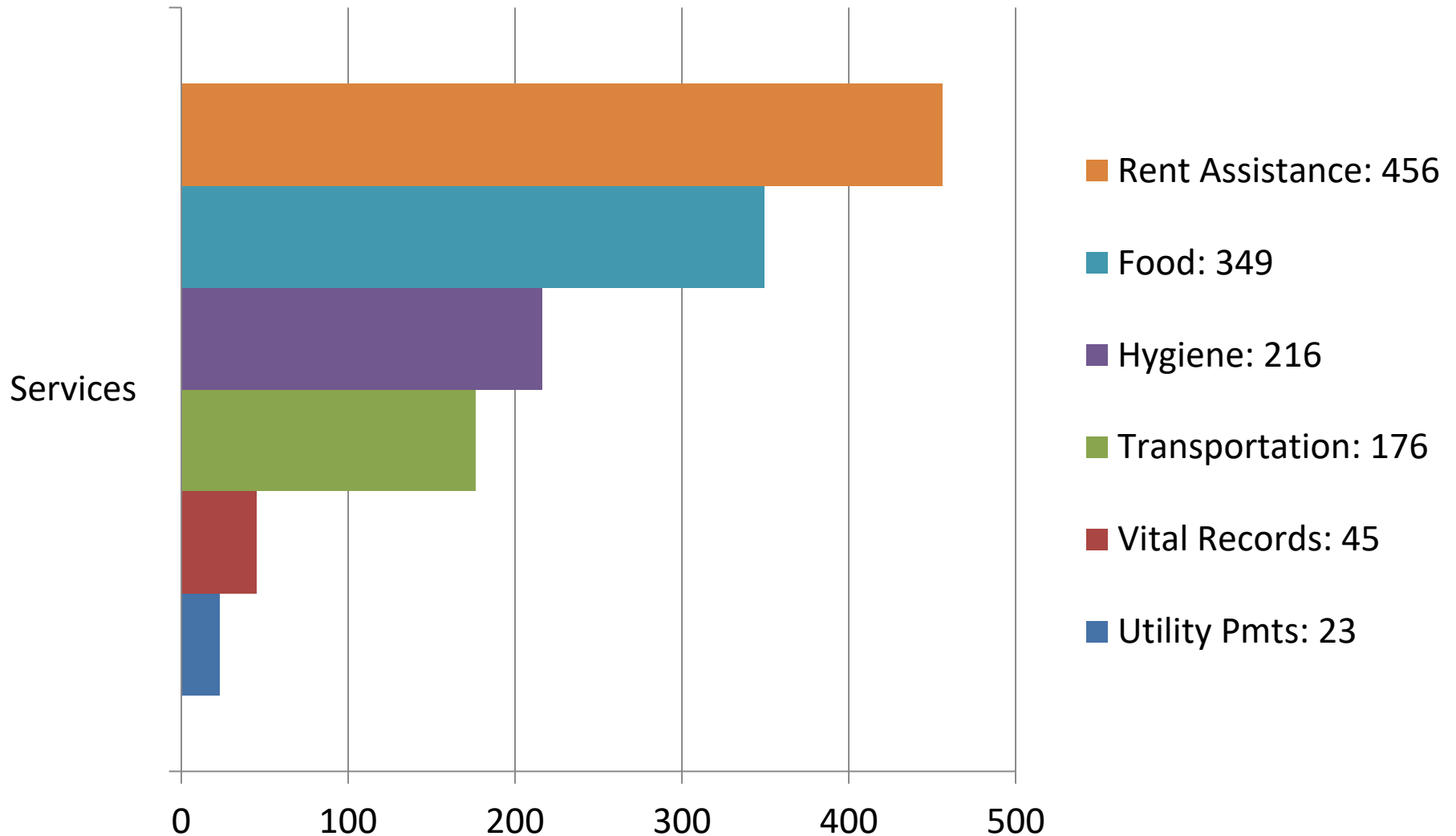
Average of 570 Clients Housed Monthly From
January 2020 – August 2020



Contracted Behavioral Health Services

- Average of 152 new referrals for contracted counseling services processed monthly
- Average of 1394 clients attending each month with a contracted counseling provider
- Length of treatment services range from 90 days to 3 years depending on the client's need
 - Average of 60 successful program completions monthly

Additional Services Provided to Clients from January - August 2020



Intakes/New Cases by Region

Region I – Total 667

- Espanola - 26
- Farmington - 341
- Gallup - 44
- Grants - 71
- Las Vegas - 21
- Raton - 48
- Santa Fe - 103
- Taos - 13

Region II – Total 1,046

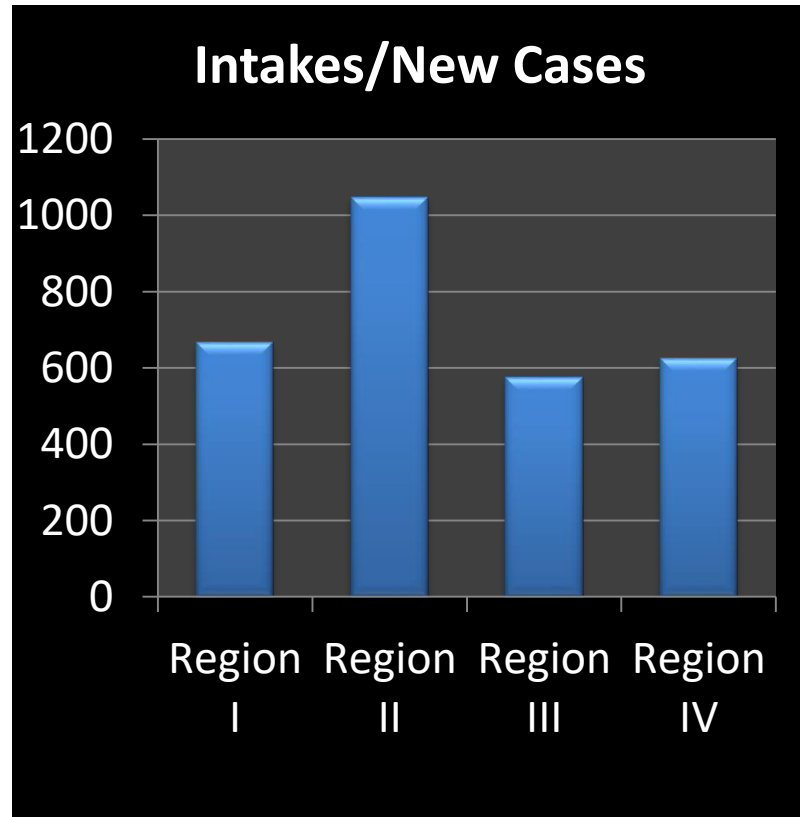
- Albuquerque - 935
- Bernalillo - 31
- Los Lunas - 80

Region III – Total 576

- Alamogordo/Ruidoso - 127
- Anthony - 25
- Deming/Lordsburg – 49
- Las Cruces -250
- Silver City - 68
- TorC/
Socorro/Moriarty - 57

Region IV – Total 625

- Carlsbad/Artesia - 126
- Clovis - 204
- Hobbs - 110
- Portales - 39
- Roswell - 109
- Tucumcari - 37



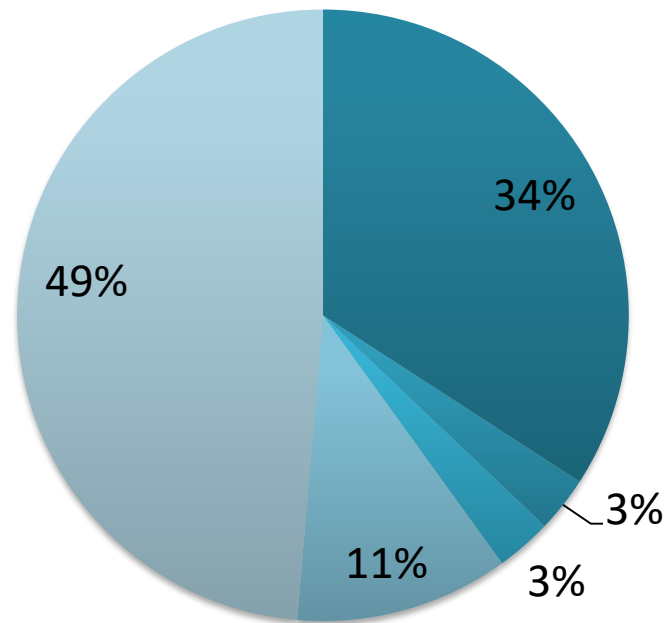
Sanctions and Evidence Based Practices Utilized Prior to Revocation or Arrest

- Curfew
- Increase Level of Supervision
- GPS Monitoring
- Increased Field Visits
- Increased Office Visits
- Community Service
- Increased Counseling
- Verbal Reprimand
- Increased Drug Testing
- Alcohol Monitoring
- Handwrite Conditions
- Halfway House
- Transitional Living
- Interlock
- Polygraph (sex offenders)
- Sober Living Homes
- AA/NA
- ASPEN
- Cognitive Skills
- Life Skills
- Case Management
- Medication Management
- Substance Abuse Treatment
 - Assessment
 - Inpatient-(if recommended by assessment)
 - Partial Hospitalization
 - Intensive Outpatient
 - Outpatient
- Anger Management
- Batterer's Intervention
- Mental Health
- Parenting
- Drug Court
- Veteran's Court
- Sex Offender Treatment
- Gambling Addiction Treatment
- Grief Counseling
- Drug Offender Classes
- DWI School
- Theft Class
- Family Counseling

Alternatives to Incarceration and Releases Pending Revocation

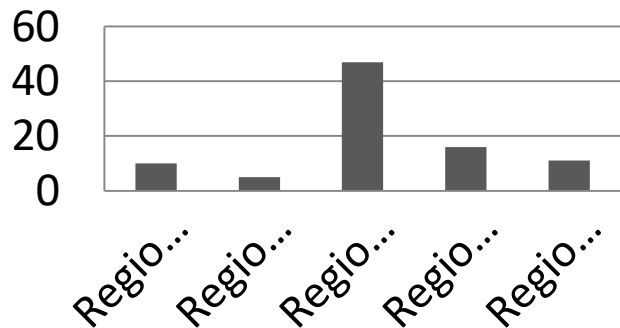
Offenders not in custody pending revocation

■ Released ■ House Arrest ■ GPS ■ Criminal Summons ■ Other

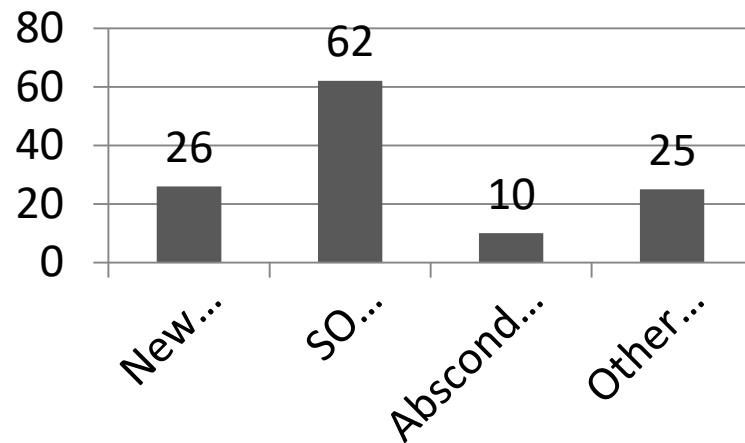


December 2019 – Present Supervised Sex Offender Arrest Data

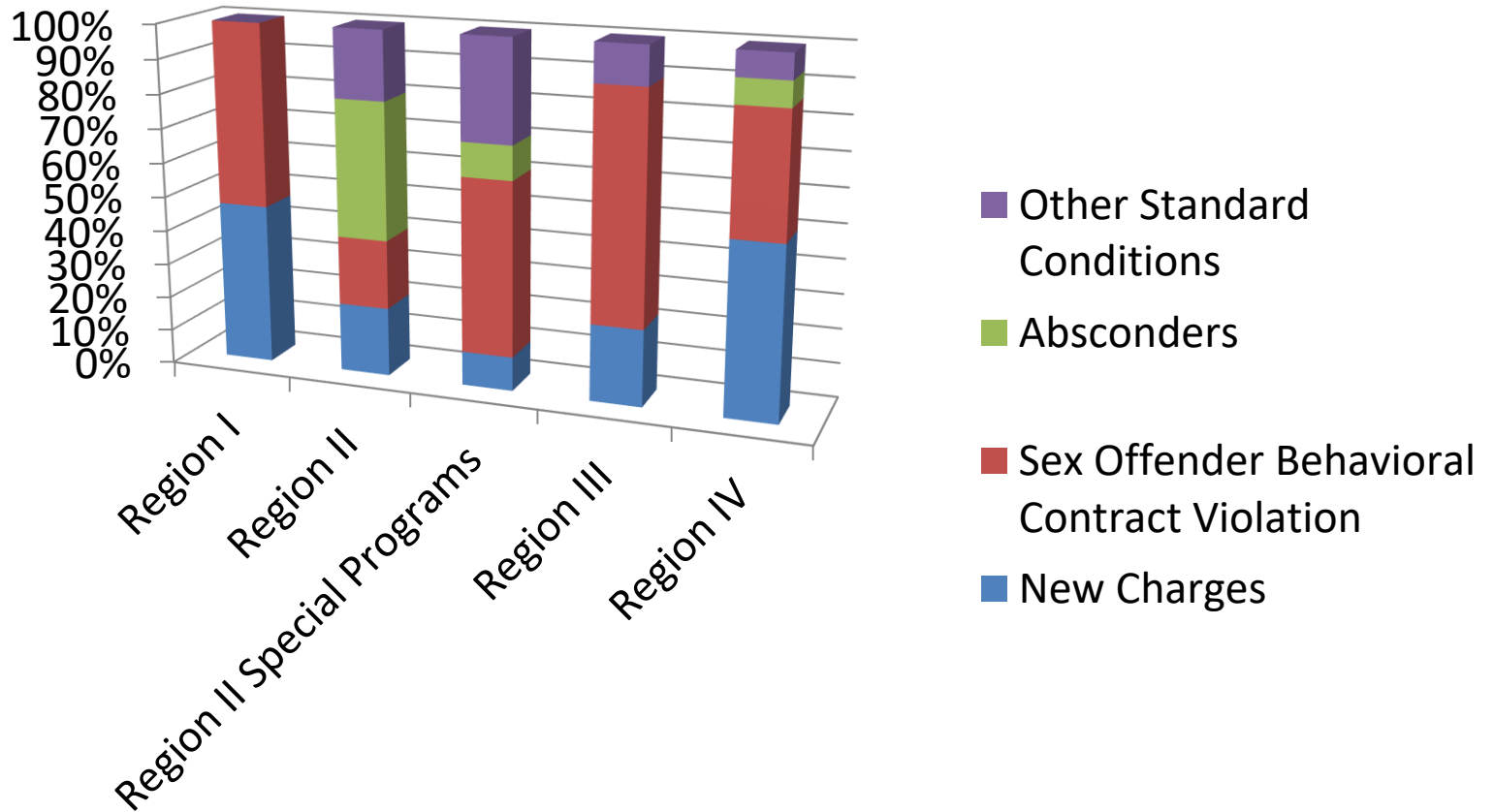
Total Supervised Sex Offender Arrests by Region



Supervised Sex Offender Arrests by Violation Type



December 2019 – Present Supervised Sex Offender Arrest Data



PPD Fugitive Apprehension

- NMCD Absconder Arrests by STIU 2020 – **351**
- Law enforcement arrests of NMCD Absconders 2020– **1619**
- Total Absconder Arrests for 2020– **1970**

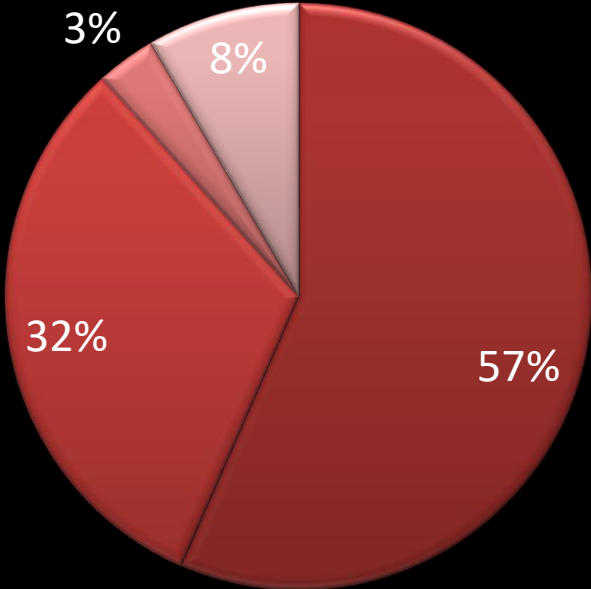
COVID-19



New Mexico Probation and Parole

Discharges

■ Satisfactory ■ Unsatisfactory ■ Early ■ Other



Range from March 2020 thru September 2020

THANK YOU

