

Opportunities/ Challenges

- Partnering with Los Alamos National Laboratory & Local Government to fit growing needs.
- Drainage/Flooding Issues
- Trespassing/Illegal Dumping Issues
- Fencing Issues



NOTES:

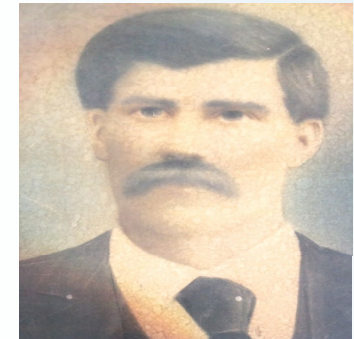
The Corporation of the Bartolome Sanchez Land Grant

PO BOX 46

Hernandez, NM 87357

19419 Chama Highway

The Corporation of the Bartolome Sanchez Land Grant



BSLG
PO BOX 46
HERNANDEZ, NM 87537

History of the Bartolome Sanchez Land Grant

- July 27, 1707 - Bartolome Sanchez letter to Governor and Capitan General Francisco Cuervo y Valdes requesting the Land Grant in the name of King Philip V of Spain.
- August 8, 1707 the Chief Alcalde of Santa Cruz Juan Roque Gutierrez performed the ceremony of Formal Royal possession.
- 186 years later on March 3, 1893 the 5th generation Great Grandson also named Bartolome Sanchez (Pictured on front page) petitioned the Court of Private Land Claims under the American Government for a re-validation of the Land Grant from 1707.
- The great grandson, Bartolome Sanchez, passed away in 1931. Records indicate ownership of the lands by the Corporation of the Bartolome Sanchez Land Grant by 1935.
- We were incorporated with the NM State Corp Commission on Feb 4, 1941 as the Corporation of the Bartolome Sanchez Land Grant.
- In approximately 1954 the Corporation successfully completely its quiet Title Suit and the Land Grant contained approximately 3,400 acres of land at that time.
- The Land Grant runs from the Northern Espanola City Limits (bounded by the Santa Clara Pueblo), North for approximately 5.5 miles to The Arroyo De La Presa in El Duende, near the Rio Chama River.

Current Operations within The Bartolome Sanchez Land Grant

Law Enforcement—New Mexico State Police, Rio Arriba County Sheriffs Office, City Of Espanola Police Department.

Health—Rio Arriba Health Commons, Dialysis Center, Lincare

Education—Carlos F. Vigil Middle School

Motor Vehicle Department, NM National Guard Armory, Department of Transportation

Rio Arriba County—Espanola Annex Offices, Magistrate Court

City of Espanola— Regional Sports Complex, Judicial Complex

Del Norte Credit Union

United States Postal Service—Espanola Branch

Utility Infrastructure—Electric Substation, Natural Gas Pipeline, City of Espanola Water Tanks , Agua Sana

Convenient Stores—Circle C

Current Operations

