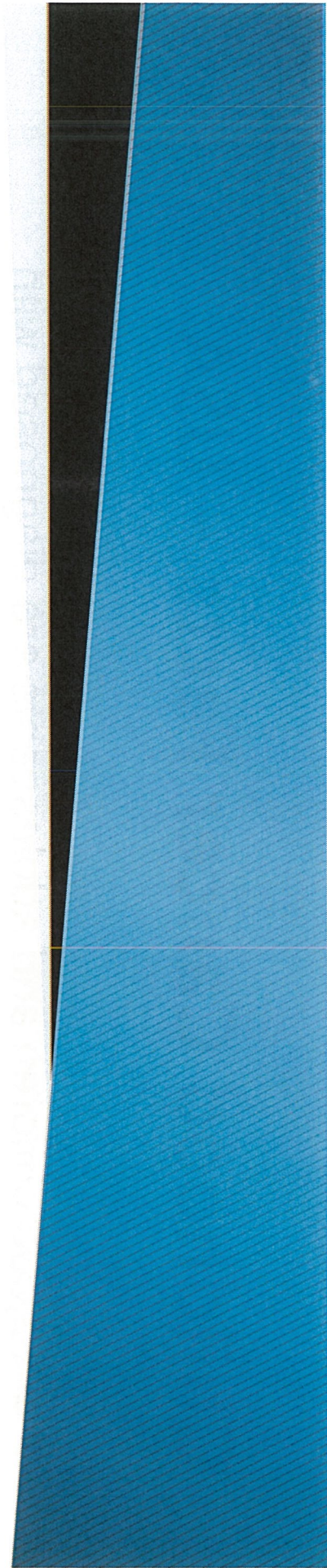





Pediatric Oncology

John F. Kuttesch, Jr., Ph.D., M.D.
Chief, Division of Pediatric Hematology/Oncology



Childhood Cancer Facts – USA

- > 12,500 children and adolescents are diagnosed with cancer per year
 - One of every 500 young adults is a childhood cancer survivor
 - Nearly 2/3 of the survivors later experience significant and chronic medical problems or develop secondary cancers
 - The causes of most pediatric cancers remain a mystery and cannot be prevented
 - Leading cause of death by disease in children and adolescents
 - 100% socioeconomic and psychosocial impact on the family
- 


Mission: Pediatric Oncology at UNM Health Science Center

*To Decrease the Burden of Childhood Cancer in
Children and Families of New Mexico through
Clinical Service, Research and Education.*



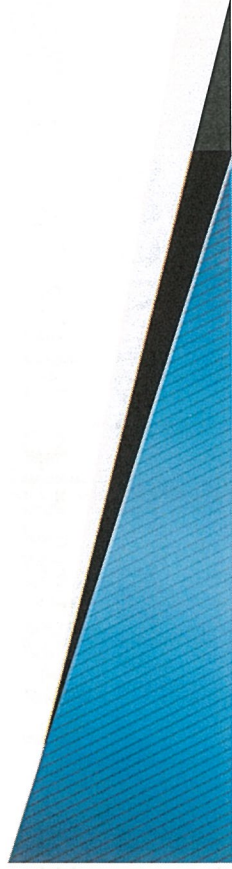


Clinical Services – Pediatric Hematology/Oncology

- The Only Tertiary Care Provider of Oncology Services for Infants, Children and Adolescents in New Mexico
 - Multidisciplinary Team Approach in the Comprehensive Care of Patients (7 physicians, 3 practitioners, 9 nurses, 3 social workers, 3 pharmacists)
 - Comprehensive Children’s Hospital Environment
 - UNM Cancer Center Services: Radiation Therapy, Orthopedic Oncology, Gynecologic Oncology
 - Collaboration with UNM Cancer Center: Care of Young Adults
- 

Clinical Services – Pediatric Hematology/Oncology

- Comprehensive Treatment Planning and Care
 - Weekly Patient Care Meetings
 - Biweekly Tumor Board Reviews
 - Participation in UNM CCC Tumor Board Reviews
 - Weekly Radiology Conferences
 - Psychosocial Rounds
- Comprehensive Clinics/Programs
 - Survivorship Clinic
 - Vascular- Lymphatic Malformation program
 - Neuro-Oncology Clinic (planning)
 - Post Bone Marrow Transplant Follow-up Clinic



Pediatric Hematology/Oncology

New Mexico Natives



Jessica Valdez., M.D. MPH. (2018)

- Training
 - UNM & UNM SOM
 - Stanford Pediatric Residency
 - St Jude Fellowship
- Interests:
 - Outcomes in Diverse Populations
 - Cancer Predisposition Syndromes



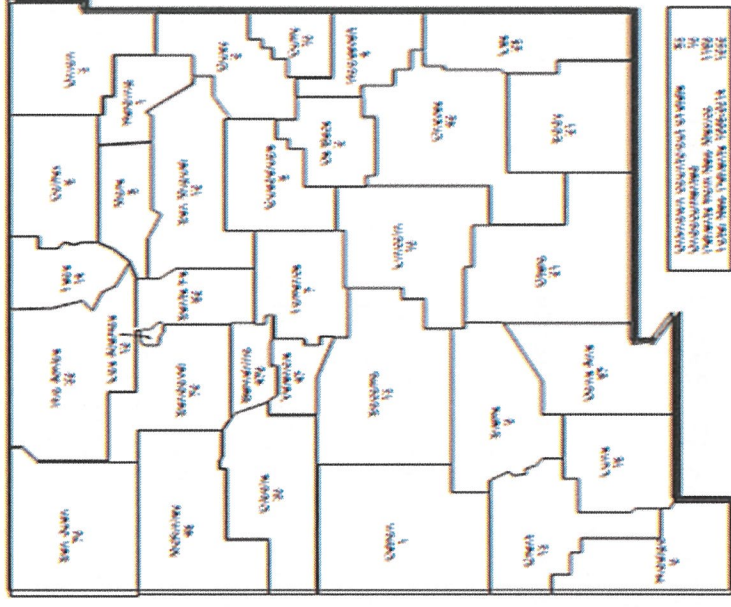
Jodi Mayfield, M.D. MCS (2015)

- Training
 - UNM & UNM SOM
 - Dell Children's -Austin Residency
 - University of Chicago
- Interests
 - Outcomes in Leukemia: Disparities
 - Adolescent and Young Adult Oncology

Pediatric Oncology

- Referrals received from all parts of the state
- Over 325 referrals from 2010–2018 (current)
- Over 350 Active Patients and approx. 5000 clinic and Inpatient visits in last fiscal year

Pediatric Cancer
Cumulative Newly Diagnosed Patients
by County 1998-2014



Research – Pediatric Hematology/Oncology

- Nationally-Recognized Investigators
 - Dr. Boayue (Cancer Control; NCCORP); Dr. Heideman (Brain Tumors); Dr. Kuttesch (COG-PI, Brain Tumors, Chair, DSMC-Experimental Therapies;
 - Children’s Oncology Group
 - Only UNM site
 - Over 90% of eligible patients enrolled on National Cancer Institute - approved therapeutic trials
 - Sixty-Five Open Research Studies (Therapy, Epidemiology, Biology, Registry)
 - Cancer Control Research Studies:
 - Medication Adherence, Osteonecrosis, Kidney Function
 - Data Compliance: 100%
- Sponsored Research - UNM
 - Clinical Projects: 7
 - Laboratory-Based Projects: 4

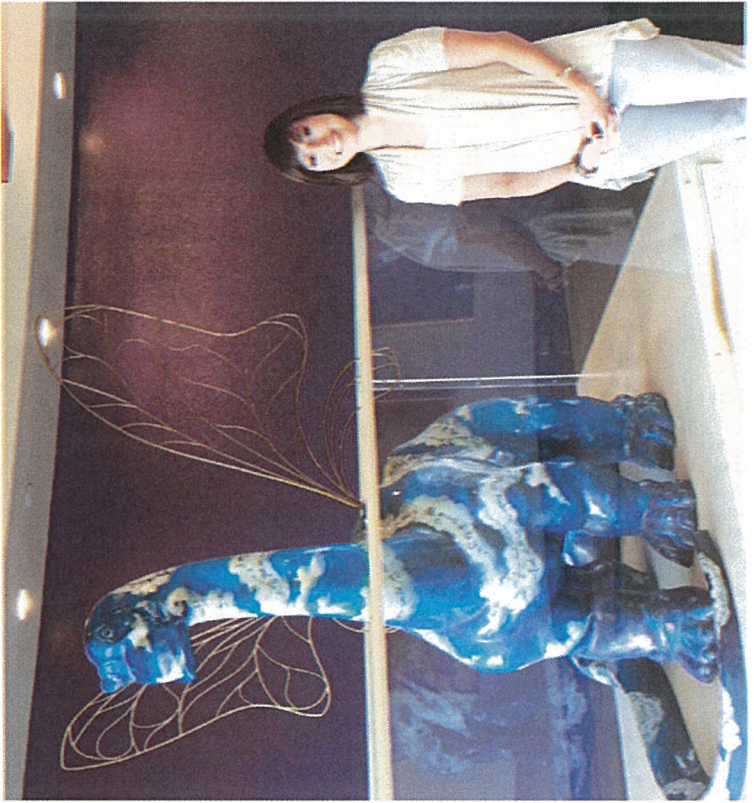


Clinical Trials – Pediatric Oncology

A comprehensive clinical trials team meets weekly to discuss enrollments and study issues. The current open study portfolio includes:

- 50 Therapeutic Trials
- 15 Cancer Control, Epidemiology, Late Effects and Pharmacologic PK/PD Studies
- Novel Therapies
 - Immunotherapies
 - Targeted Therapies
 - Precision Medicine





Community Outreach and Survivor Programs, Methods to Enhance Clinical Trial Recruitments

- Adolescents and Young Adults
- Survivorship
- Camps for Children/Survivors
 - Camp Enchantment
 - Sibling Retreat
- Off-site Teaching / Physician Outreach Programs
 - Community Education
 - Hospital Outreach
 - School Outreach



Education & Outreach - Pediatric Hematology/Oncology

- Medical Student/Resident Education
 - Clinical Rotations: 17 residents
 - Medical Student Lectures: 130
 - Tumor Boards, Radiology Rounds, Patient Care Conferences
 - Medical Student Teaching
 - Clinical rotations, Didactic. Acting Internship
 - Consistently Outstanding Teaching Scores
- Professional Presentations
- Community Outreach



Survivorship Clinic

- Provides Multi-Disciplinary Follow-up for > 600 Survivors of Pediatric Malignancies
- Programs
 - Multi-disciplinary clinic for patients at least 2 years off therapy and cancer-free. Health assessment and screening. Risk assessment.
 - School Re-entry Program
 - Tobacco Use Screening and Cessation Program: Funded through a community grant of CCF-NM
 - Young Adult Transition Program as patients become adults
 - Outreach: Education



Pediatric Oncology Summary

- **Clinical Service**
 - Pediatric Specialists/ Pediatric-focused
 - Medium + -sized program: Care of infants, children, adolescents (Young Adults)
 - Continuum of care: Diagnosis to Survivorship
 - Multidisciplinary care combining resources of a Comprehensive Children's Hospital and a Comprehensive Cancer Center
- **Research**
 - Clinical Research: outstanding recruitment and conduct of clinical trials
 - National leadership in clinical research /nationally recognized investigators
 - Laboratory research: T-cell malignancies
 - Mentoring of residents and medical students
- **Education**
 - Mentoring and Teaching: Residency and Medical Student
 - Consultation and co-ordination of care
- **Program Development**
 - Adolescent and Young Adult Program: (leukemia, lymphoma, sarcoma & gynecologic Ca)
 - *Vascular-Lymphatic Malformations Program*

Pediatric Hematology/Oncology

FY 2019 Budget

REVENUES:	\$	%
Tobacco Settlement Fund Allocation	250,000	8.2
General Fund	1,220,900	39.9
Clinical	439,868	14.4
Contracts and Grants	348,652	11.4
Internal Transfers & Allocations	(219,934)	
Other Revenue	1,020,543	33.3
Total Revenue	\$3,060,029	
EXPENSES		
Total Compensation	2,457,532	80.3
Total Operating Expense Other	602,497	19.7
Total Expenses	\$3,060,029	

- Supports our mission to deliver outstanding care to the Children of New Mexico
 - Nursing specialists, education, Social Work
- Supports access to the best therapies available in the world to improve outcomes
- Supports survivorship, education and outreach
- To give the best care to the Children of New Mexico

Pediatric Hematology/Oncology

FY 2018 Actuals

REVENUES:	\$	%
Tobacco Settlement Fund Allocation	228,672	7.8
General Fund	1,196,100	40.7
Clinical	442,830	15.1
Contracts and Grants	348,652	11.9
Internal Transfers & Allocations	(221,415)	
Other Revenue	942,012	32.1
Total Revenue	\$2,936,851	
EXPENSES		
Total Compensation	2,403,070	84.8
Total Operating Expense Other	415,630	15.2
Total Expenses	\$2,818,700	

- Supports our mission to deliver outstanding care to the Children of New Mexico
 - Nursing specialists, education, Social Work
- Supports access to the best therapies available in the world to improve outcomes
- Supports survivorship, education and outreach
- To give the best care to the Children of New Mexico



Questions?

