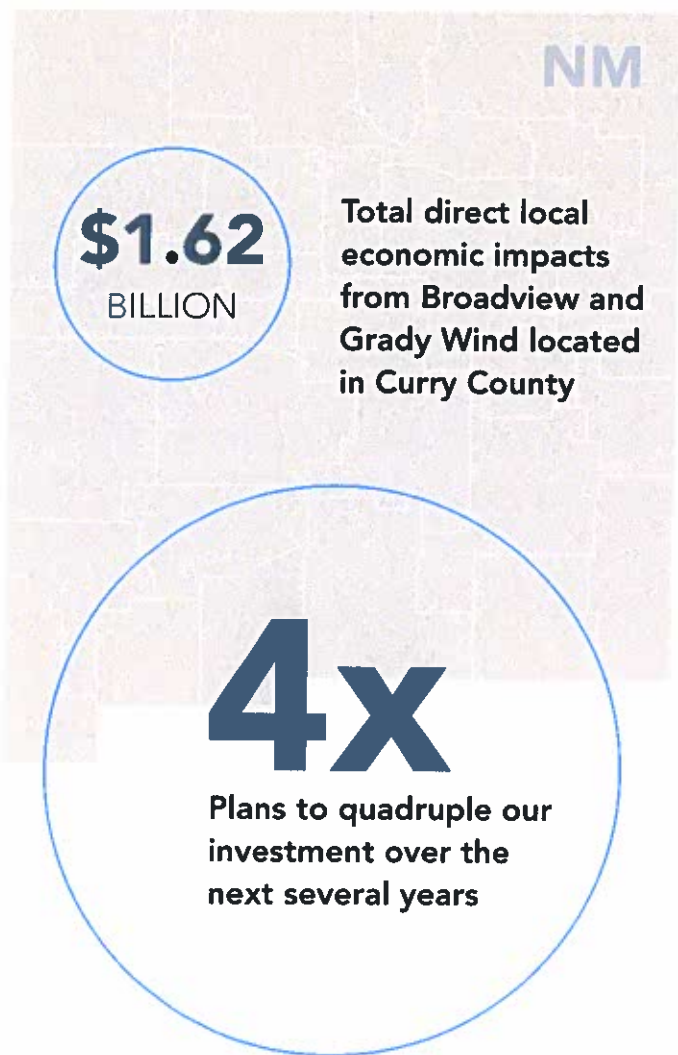


Investing in New Mexico

AUGUST 2021



Commitment to Local New Mexican Communities and Environmental Stewardship

\$3 MILLION

Invested to date, into local community initiatives and sponsorships

Jobs and Education



Hired 60% of Mesalands Community College's wind technician graduating class for Broadview and Grady Wind facilities.



Partnering with Eastern New Mexico State University and New Mexico State University on course programming and research for the wind industry.



Pattern Energy became part of the community, building relationships with civic leaders and hosting or participating in community events. At the wind farm dedication, everybody just felt like they were part of the blade signing like they were rock stars."

ERNIE KOS

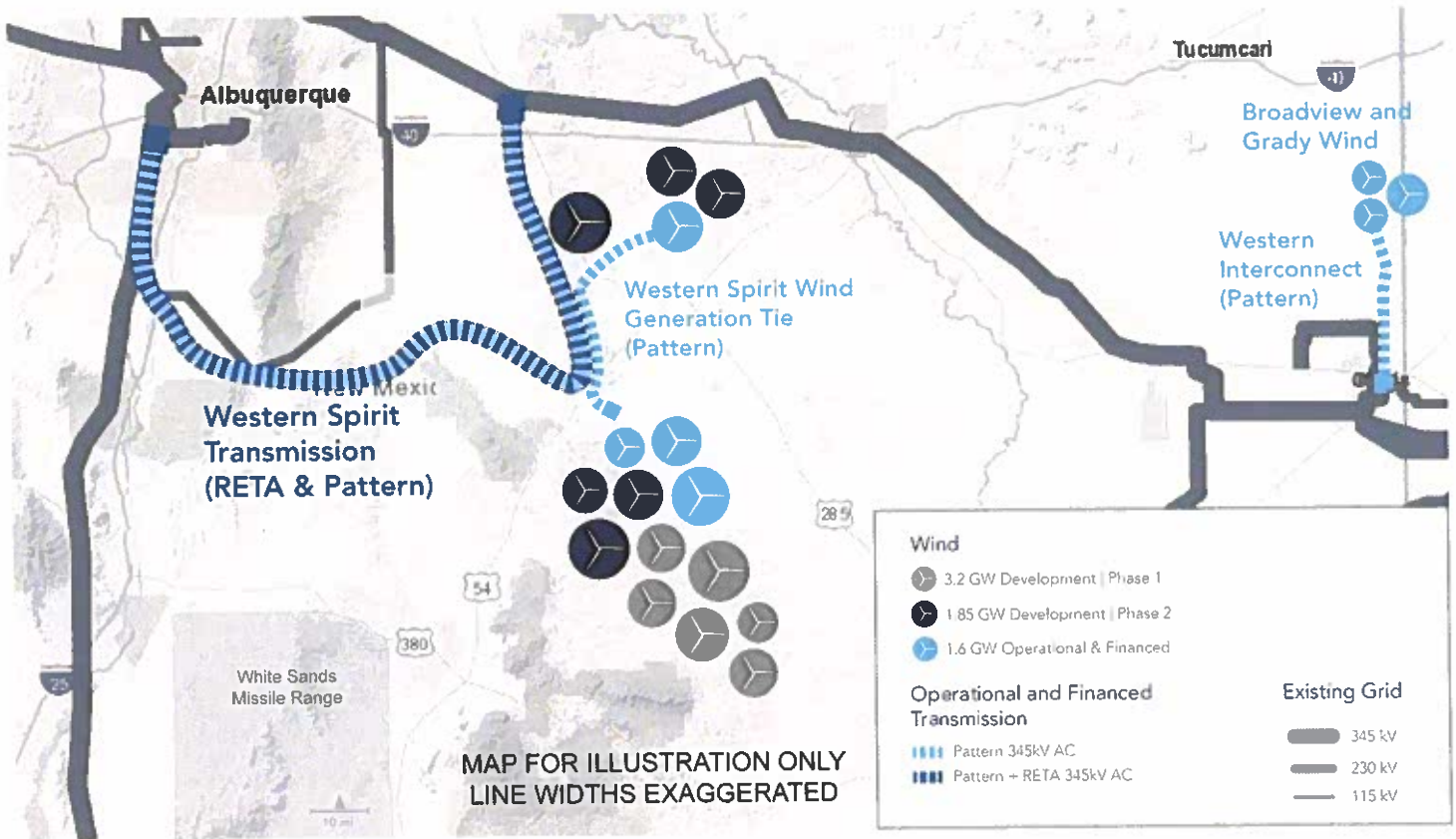
Executive Director

Clovis Chamber of Commerce



Top Federal Policy Priorities

- ✓ **Direct pay of the ITC and PTC**
- ✓ **Transmission ITC**
- ✓ **Long-term extension of ITC and PTC**



Western Spirit Wind

- » Represents the largest single phase renewable energy project in America

\$3B Total direct economic impacts

\$426.1M In payments to landowners over life of project

\$3M Annually to three counties and two school districts

Four wind farms totaling 1,050 MW:

- » 349 MW — Red Cloud Wind
- » 324 MW — Clines Corners Wind
- » 272 MW — Tecolote Wind
- » 105 MW — Duran Mesa Wind

Counties	Guadalupe, Lincoln, Torrance
DEC 2021	COD
1,500+	Construction Jobs
100+	Full-Time Jobs

Western Spirit Transmission

- » Largest single investment of transmission infrastructure in New Mexico since 1986
- » First of its kind public-private partnership – owned by New Mexico Renewable Energy Transmission Authority and jointly developed by Pattern Energy

70% Union workers

155-mile — 345kV line Size and Capacity

Future Wind Development

- » Will be America's largest clean energy power project

\$6B Investment

Counties	Guadalupe, Lincoln, Torrance
2025	3,200 MW — COD Phase 1
Post 2025	1,850 MW — COD Phase 2
3,000+	Construction Jobs