

This PDF is available at <http://nap.nationalacademies.org/27058>



## Reducing Intergenerational Poverty (2023)

### DETAILS

526 pages | 6 x 9 | PAPERBACK

ISBN 978-0-309-70366-6 | DOI 10.17226/27058

### CONTRIBUTORS

Greg J. Duncan, Jennifer Appleton Gootman, Priyanka Nalamada, Editors; Committee on Policies and Programs to Reduce Intergenerational Poverty; Board on Children, Youth, and Families; Committee on National Statistics; Division of Behavioral and Social Sciences and Education; National Academies of Sciences, Engineering, and Medicine

### SUGGESTED CITATION

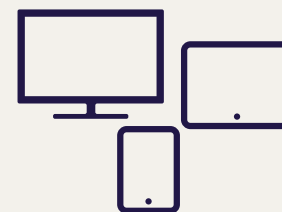
National Academies of Sciences, Engineering, and Medicine. 2023. *Reducing Intergenerational Poverty*. Washington, DC: The National Academies Press. <https://doi.org/10.17226/27058>.

BUY THIS BOOK

FIND RELATED TITLES

Visit the National Academies Press at [nap.edu](http://nap.edu) and login or register to get:

- Access to free PDF downloads of thousands of publications
- 10% off the price of print publications
- Email or social media notifications of new titles related to your interests
- Special offers and discounts



All downloadable National Academies titles are free to be used for personal and/or non-commercial academic use. Users may also freely post links to our titles on this website; non-commercial academic users are encouraged to link to the version on this website rather than distribute a downloaded PDF to ensure that all users are accessing the latest authoritative version of the work. All other uses require written permission. ([Request Permission](#))

This PDF is protected by copyright and owned by the National Academy of Sciences; unless otherwise indicated, the National Academy of Sciences retains copyright to all materials in this PDF with all rights reserved.

**TABLE S-1** Program and Policy Ideas Linked by Direct Evidence to Reductions in Intergenerational Poverty

<b>Driver</b>	<b>Program or policy idea</b> (* indicates that the supporting evidence was particularly strong)
<b>Education</b>	
<ul style="list-style-type: none"> <li>• Early childhood</li> </ul>	None identified in recent research
<ul style="list-style-type: none"> <li>• K–12 education</li> </ul>	Increase K-12 school spending in the poorest districts* Increase teacher workforce diversity* Reduce exclusionary school discipline* Increase access to Ethnic Studies courses
<ul style="list-style-type: none"> <li>• Post-secondary education</li> </ul>	Expand effective financial aid programs for low-income students* Increase campus supports (such as tutoring and case management)*
<ul style="list-style-type: none"> <li>• Career training</li> </ul>	Expand high-quality career and technical education programs in high school* Expand sectoral training programs for adults and youth*
<b>Child and Maternal Health</b>	
<ul style="list-style-type: none"> <li>• Family planning</li> </ul>	Increase funding for Title X family planning programs* Ensure that Medicaid beneficiaries have access to family planning services*
<ul style="list-style-type: none"> <li>• Health insurance</li> </ul>	Expand access to Medicaid with continuous 12-month eligibility and 12-month post-partum coverage* Expand access to Indian Health Services for all eligible mothers and children
<ul style="list-style-type: none"> <li>• Pollution reduction</li> </ul>	Support the EPA to work with local partners to adopt and expand efficient methods of monitoring outdoor and—especially in schools—indoor air quality
<ul style="list-style-type: none"> <li>• Nutrition</li> </ul>	Remove the five-year waiting period of SNAP eligibility for legal permanent resident parents* Eliminate the proration of SNAP benefits for citizen children with undocumented parents
<b>Family Income, Employment, and Wealth</b>	
<ul style="list-style-type: none"> <li>• Work-based income support</li> </ul>	Expand the Earned Income Tax Credit by increasing payments along some or all portions of the schedule and possibly by providing a credit to families with no earnings*
<b>Family Structure</b>	

PREPUBLICATION COPY, UNCORRECTED PROOFS

	None identified by research to date
<b>Housing and Neighborhoods</b>	
<ul style="list-style-type: none"> <li>Residential mobility</li> </ul>	Expand coverage of the Housing Choice Voucher program and couple it with customized counseling and case management services to facilitate moves to low-poverty neighborhoods.
<b>Neighborhood Crime and the Criminal Justice System</b>	
<ul style="list-style-type: none"> <li>Juvenile incarceration</li> </ul>	Juvenile confinement should only be used for youth who pose a serious and immediate threat to public safety*
<ul style="list-style-type: none"> <li>Child investment strategies</li> </ul>	Improve school quality and reduce lead exposure in ways identified in the education and health categories* Scale-up evidence-based therapeutic interventions such as the Becoming a Man program
<ul style="list-style-type: none"> <li>Strengthen communities to reduce violent crime and victimization</li> </ul>	Scale up programs that abate vacant lots and abandoned homes* Increase grants to community-based organizations*
<ul style="list-style-type: none"> <li>Policing strategies</li> </ul>	Expand funding for policing in high-crime neighborhoods* Expand use of effective strategies like community policing*
<ul style="list-style-type: none"> <li>Gun safety</li> </ul>	Improve gun safety in ways that pass constitutional review* Promote child access prevention laws and restrictions on right-to-carry laws, limit access to guns by domestic abusers* Promote sentencing add-ons for violence involving firearms*
<b>Child Maltreatment</b>	
	None identified by research to date
<b>Racial Disparities</b>	
	A number of the programs and policies listed above have been shown to be effective for Black children and families (See Table C-3-1)*

Notes: “\*” indicates that the program or policy’s impact on intergenerational poverty is supported by random-assignment evaluation evidence that has been replicated across several sites or by compelling quasi-experimental evidence based on national or multi-state data or a scaled-up program. Table entries without an “\*” represent programs or policies for which the evidence has not been replicated or the policy has not been scaled up.