



Anchorum
Health Foundation



Las Vegas NM Community Foundation

**Community Leadership, Grantmaking and
Anchorum Health & Wellness Initiative**

23 July, 2025

Presentation to the NM Legislative
Health & Human Services Interim Committee





Sense of Place: San Miguel & Mora Co.

- Disbursed and distinct communities: Pecos, Villanueva, Las Vegas, Mora, Wagon Mound, Conchas Dam, Ocate, almost as far as Trementina and Mosquero!
- Shaped by post-fire and flood-recovery.
- *Querencia* is at the heart of our resiliency: more than a physical space, a place of strength, confidence, comfort, deeply connected to identity and emotions.



A Culture of Philanthropy

- Founded by the effort of motivated community members in 2016 to fill a gap, gather funds.
- A slow start: took 3 years to fundraise enough to start giving small community grants (\$5k awards).
- Year 4, COVID kicked us into emergency response mode.
- Year 6 brought the Hermit's Peak Calf Canyon Fire, and this really propelled the Foundation into a leadership role overnight.
- Helped to establish and convene a Long-Term Recovery Group to partner with FEMA, receive and redirect resources, address unmet needs, etc.



LVNMCF Cont.

- Year 8 saw the Anchorum Health & Wellness Initiative/Donor Advised Fund.
- Year 9 we have welcomed our second DAF, are looking to hire a full-time Exec. Dir., and are actively working on health, housing, and other long-term recovery projects.
- LVNMCF is now a key player in community leadership, long-term recovery, capacity building for our NPO sector, and more.
- Since 2020, the LVNMCF has awarded more than \$1.5 million in grant monies to entities serving San Miguel and Mora Counties

**HOUSING 101
FREE WORKSHOP**

PRESENTED BY JENN LOPEZ
PRINCIPAL, PROJECT PROMOXIE
DURANGO, CO



RSVP
PHONE: (505) 600-2862
EMAIL: ADMIN@LVNMCF.ORG

**THURSDAY,
MARCH 27, 2025**

10:00-11:30am
@ Las Vegas NM Community
Foundation
606 Douglas Ave.
(former Gordon's Jewellers Building)

- Learn about innovative strategies for affordable housing in Las Vegas
- Collaborate with public and private sector resources to address critical housing needs for our community



Las Vegas, New Mexico
**Community
Foundation**
Helping Greater Las Vegas THRIVE!



Our Initiatives

01

Capacity Building of our local NPOs and Partners

02

Affordable Housing

03

Long-Term Recovery

04

Health & Wellness

05

Other Focus Areas:

- Agricultural and Environmental Sustainability
- Arts and Culture
- Community Development
- Education
- Historic Preservation



**Anchorum Health Foundation:
WE'RE ALL IN**



Anchorum Health & Wellness Initiative

- \$25 million over the next 5 years into northern New Mexico
- Serving 13 northern New Mexico counties and all of the state's Pueblos and Tribal Nations
- Partnered with 5 Community Foundations and enlisted Anchorum Fellows as 'boots on the ground' advisors/liaisons
- Capacity building, technical support, professional development, grantmaking
- Co-strategic philanthropy, breaking from traditional philanthropic models

Meet the A-Team!

Due to high need from fire and flood-recovery, and the dispersed two-county area, LVNMCF received special permission to enlist two Fellows, hired in November '24.

- **Ariel Cordero, MSW, MPA - Pecos**

25 years experience in social services and healthcare, including Spanish language and translation

- **Arielle Hawney - Las Vegas**

15 years experience in community organizing and a decade in natural foods industry
(alternative/preventative and wellness background)





Year 1 Process

01

Building Trust and Rapport - Getting Grant Money Circulating While Developing Longer-Term Strategies

02

Listening Sessions & Surveys

03

Task Forces: Mental Health & Women's Health

04

Capacity Building/Technical Support for local NPO Partners

05

Roundtable with NM Attorney General Raul Torrez and Rural Providers/Admins

06

Developing Anchorum H&W Grant Application & Guidelines, Scoring Rubric, Grant Agreements, etc. for Anchorum-specific Competitive Grant Cycle

07

Designing Policies, Procedures, Work Flow, etc. as Liaisons between LVNMCF, Anchorum, Community Partners and Residents



Emerging Priorities

- Behavioral Health Supports and Providers, especially given post-fire trauma/PTSD/depression and already underserved populations
- Women's Health and Maternal Health Services, all-ages plus OB/delivery
- Food Security and Nutrition Literacy for healthier choices & basic needs
- Substance Use & Recovery Support, whole-family & holistic-recovery
- Affordable Housing & Homelessness, lack of affordable options, under-supported services
- Transportation, a permeating issue that influences access in many areas of wellbeing
- Lack of Rural Providers/Retention of Rural Providers
- Long-term Fire/Economic/Environmental/Social Recovery
- Keeping an Eye: How might our hospital and FQHCs be affected by federal cuts?



Women's Health Task Force

- Comprised of Alta Vista CEO/Admin, local providers, SMC Health Council Members, Anchorum Fellows and others
- Convening monthly since the start of the year
- Gathering data and problem solving issues of providers, access and knowledge of existing local resources
- Building a case, illustrating need and justification for allocating resources to address the gap in services and better provide for the needs of SMC and Mora Co, as well as the three other counties that Alta Vista serves (Guadalupe, Harding, and Quay)

Women of San Miguel and Mora County:
We Need To Hear From You!

Please Take This Women's Health Survey!



Your voice matters for better health care outcomes!
<https://forms.gle/HmvBRmDHu6LldQTU8>



Survey Results

- **Critical Lack of Local OB/GYN Services:**
 - No local maternity care or birthing options.
 - Closure of Alta Vista Hospital's maternity ward is a major concern.
 - Residents feel unsupported and unsafe during pregnancy.
- **Significant Travel Burden:**
 - Most women travel 120+ miles round trip (to Santa Fe or Albuquerque) for care.
 - Creates financial and logistical strain, especially for low-income families.
 - Results in lost work time and high transportation costs.

WOMEN'S HEALTH SURVEY HIGHLIGHTS



SAN MIGUEL & MORA COUNTIES

Over 13,000 Women

Over Age 18 in San Miguel and Mora Counties



60% of Respondents Had to Travel 1-6 Times for Women's Healthcare in the Last Year

40% Reported Reduced Uptake of Care Due to Distance and Inconvenience

More than Half of Women Across Age Groups Reported Needing a Women's Health Specialist!

60% of Peri or Postmenopausal Women Could Not Access Care Locally

WHY IS THIS IMPORTANT?

- 13,000+ women in our area are in need of women's health services such as gynecology, obstetrics, and breast cancer prevention and treatment services.
- Mother and baby outcomes are at increased risk when there is no pre-natal care available in their community.
- Lack of local women's health care services creates travel-based, logistical, and financial barriers to accessing necessary health care services for women.



Survey Results

- **Limited Access to Specialists:**
 - Shortage of specialists for post-menopausal care and pelvic health.
 - Difficulty finding local doctors accepting new patients or specific insurance.
- **Erosion of Trust in Local Healthcare:**
 - Concerns about the quality of care at the local hospital and mistrust in reliable services.
- **Community-Wide Impact:**
 - The healthcare gap is believed to be driving young families away.
 - Strong desire for expanded services, including routine GYN care, birth control, and mental health support.
 - Discontinuation of telehealth is viewed as a significant setback.





Survey Results: Possible Solutions

- **Re-establishment of a Local OB/GYN Department and Birthing Unit and/or Women's Health Clinic and Birth Center:** This is the most frequently and strongly suggested solution.
- **Recruitment of More Women's Health Specialists:** Including gynecologists, midwives, pelvic floor therapists, and specialists for post-menopausal care. Including partnerships and possible travel of specialists to Las Vegas instead of patients out of town.
- **Increased Access to Routine Women's Health Services:** Such as regular check-ups, pap smears, and mammograms, without excessive wait times.
- **Improved Emergency Care:** Including the potential for a local urgent care center to avoid costly and unnecessary emergency room visits and out-of-state transfers.
- **Expansion of Telehealth Services:** To reduce the need for travel for certain types of appointments.
- **More Women's Health Education and Outreach:** Including health fairs and information on specific conditions.

Key Highlights: Year 1



Attorney General of New Mexico Raúl Torrez, left, speaks to local physician and health advocate Matthew Probst during a roundtable discussion about health Tuesday evening.

Vanessa Maciel/Optic photo

- February – Philanthropy SW Conference presentation in Dallas, Ariel Cordero & Elmo Baca
- Active media campaign to raise awareness and promote a culture of health & wellness through local Optic newspaper, social media and local radio
- 12+ community listening sessions/meetings conducted Q3-Q4, plus community surveys for women's health and overall community H&W priorities
- Anchorum competitive grant application and guidelines established; Competitive Grant Cycle conducted.
- May – Anchorum Site Visit to Samaritan House, Luna Community College and LVNMCF new home office
- Fellows conducted: Data Collection, Analysis & Reporting; Community Outreach; Partnership Development; and Capacity Building of local NPOs
- Total Year 1 grant expenditures from the Anchorum DAF monies was \$332,000 for 18 projects into San Miguel and Mora County!



Impact of Grants

Basic Needs *and* Upstream Solutions

Samaritan House Shelter



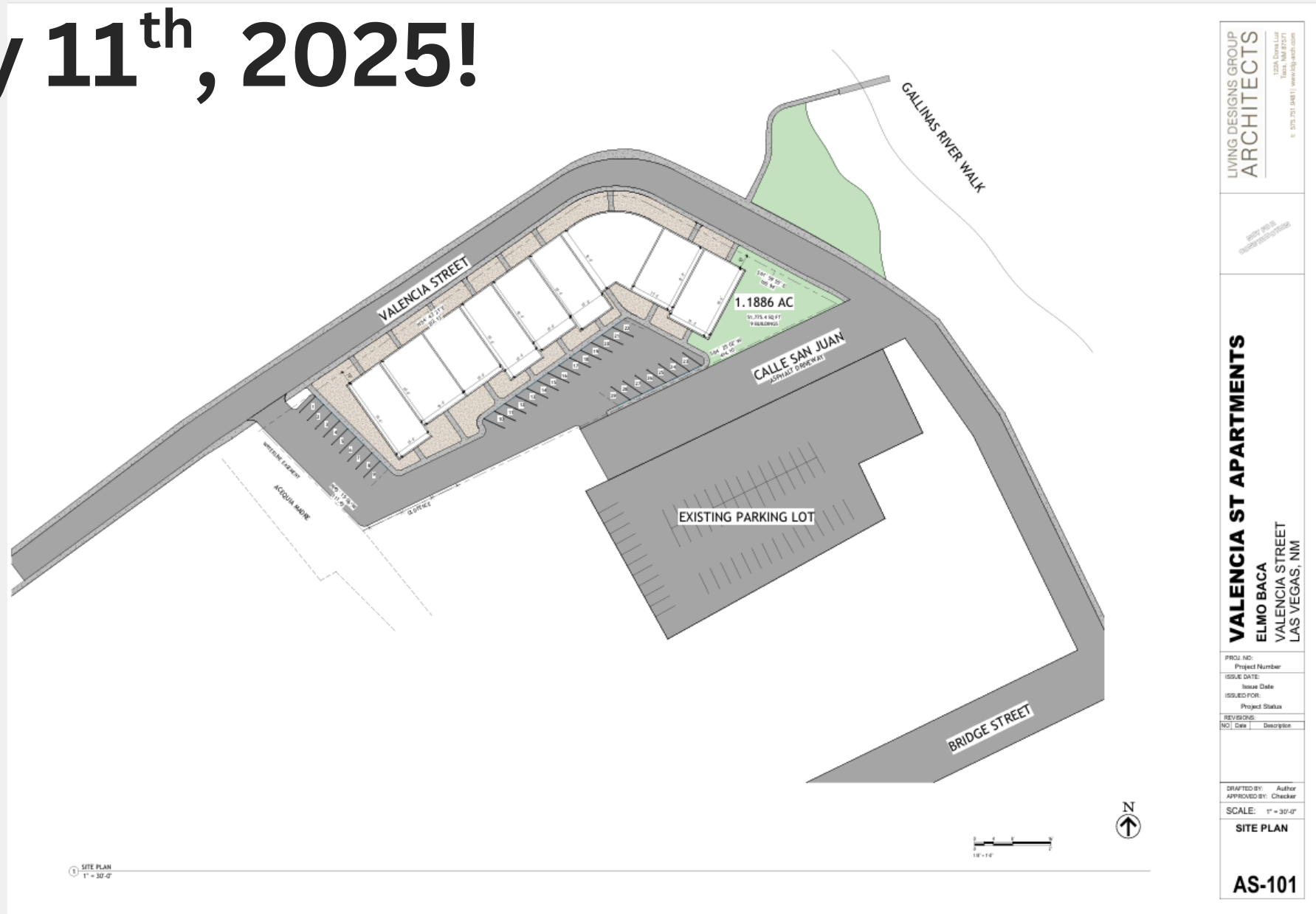
Housing & Land Trust



BREAKING

NEWS

1.2 Acre Valencia St. Lot Acquired for Affordable Housing Development, as of July 11th, 2025!



Strategy for Health & Wellness Year 2

Building on Year 1: Glancing back and moving forward . . .



Leveraging Regional Partnerships

Working in conjunction with other Anchorum Fellows to strengthen the regional support/engagement web and NPO relationships: Alta Vista, Sunrise, ROAMS, other



SDOH-Specific Task Force Groups

Bringing together topical work groups to better identify gaps and develop more targeted upstream solutions for long-term strategic impact



Ongoing Community Engagement

Implement targeted community engagement initiatives and strategies to increase awareness and opportunities for support for outlying frontier communities.



Strategy for LVNMCF Going Forward

Evolving to fit community need . . .



Elevate Local Capacity of NPOs

Provide professional development and capacity-building/technical support for local non-profits and charitable projects.



Long-Term Recovery & Support

Carry the torch for recovery efforts and work towards a 20-year vision of a thriving SMC and Mora Co.



Attract & Leverage Larger Funding Partners

Build on our growing legitimacy and proven deliverables to attract and leverage larger and additional funding sources.



Our 'Asks' of You

- Continue funding the Maternal Health Bureau at the DOH.
- Support the Maternal Mortality Review Committee, which investigates every maternal death, and place particular interest in accurate data for Hispanic and Indigenous women.
- Provide funding to establish strong telehealth services for rural communities for maternal and fetal medical care, such as the successful ROAMS program (Rural OB Access and Maternal Service).
- Support any efforts to establish and retain providers and services for rural and frontier communities. Rural healthcare access is a unifying, non-partisan issue, and is relevant for at least 26 out of 33 of NM Counties, considered to be rural or frontier areas.
- Support capital outlay requests to help fund a Women's Health Center, associated with Alta Vista Hospital, to provide services for women of all ages as well as a birthing center to offer maternal and OB/delivery options for the 5 counties that Alta Vista Regional Hospital serves (San Miguel, Mora, Guadalupe, Harding, and Quay).
- Support rural transportation efforts and help innovate solutions - much of rural NM faces transportation barriers and this limits access to many types of services and lowers quality of life.
- Consider the LVNMC as a potential partner in distributing/executing SB2 funding, particularly as pertaining to behavioral health and affordable housing needs, post-HPCC fire.





Anchorum
Health Foundation

Thank You

Arielle Hawney, Anchorum Fellow @ LVNMCF
hawney@lvnmcf.org
(505) 498-8365