

# MODAL Division

## TIRS Presentation

Traffic-Related Crashes,  
Fatalities and Safety  
Strategies and the Federal  
Highway Administration's  
Vision Zero and Safe System  
Approach in New Mexico

Alicia Ortiz, Acting MODAL Director



New Mexico DEPARTMENT OF  
**TRANSPORTATION**  
MOBILITY FOR EVERYONE



# Introduction and Significance



- Traffic-related crashes and fatalities pose a significant challenge globally, impacting lives, families, and economies.
- Our focus on this topic is crucial for safeguarding the well-being of our residents and visitors, and for advancing our state's transportation infrastructure.
- By delving into effective safety strategies, we are taking proactive steps toward creating safer roads and reducing the toll of accidents on our communities.

# Traffic Safety Data



- Informed Decision-Making
- Identifying Trends:
- Measuring Progress:
- Resource Allocation
- Public Awareness:

## Traffic Safety Data in Triennial Highway Safety Plan:

- **Foundation of Strategy:** Traffic safety data serves as a foundation for developing effective strategies within the Traffic Safety Division's Triennial Highway Safety Plan.
- **Tailored Interventions:** Data informs the identification of specific areas, behaviors, or demographics requiring targeted interventions.
- **Evidence-Based Approach:** Data-driven decisions ensure that safety measures are grounded in evidence, enhancing the plan's impact.
- **Continuous Improvement:** Regular data analysis supports ongoing refinement of safety strategies to achieve our goals.



# Traffic-related Crashes and Deaths

---

Jessica Bloom, Research Scientist III

Robert Rhatigan, Director

University of New Mexico, Geospatial and Population Studies

August 21, 2023

# Data on Traffic-related Crashes and Deaths

## NMDOT Crash Database

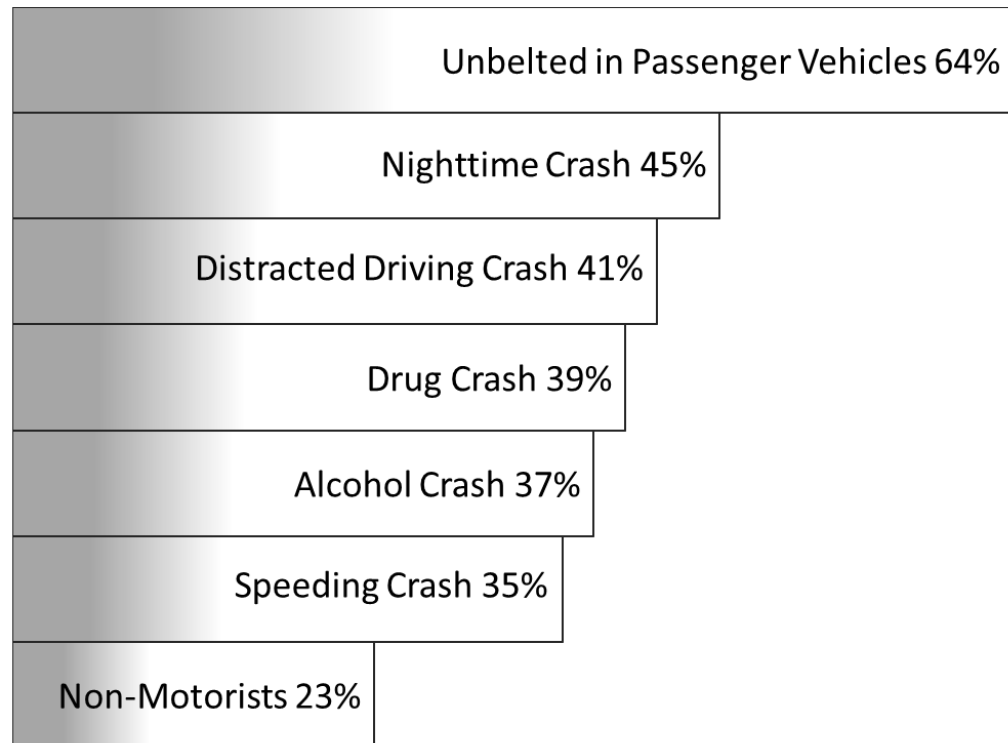
- Crashes reported by law enforcement involving a motor vehicle
- Involves a fatality, injury or >\$500 in damages
- On public roadways (excludes private property, and minor, non-injury crashes)
- Fatal crashes exclude suicide, natural death (e.g. heart attack), and homicide
- Not based on a survey or sampling

## UNM Geospatial and Population Studies

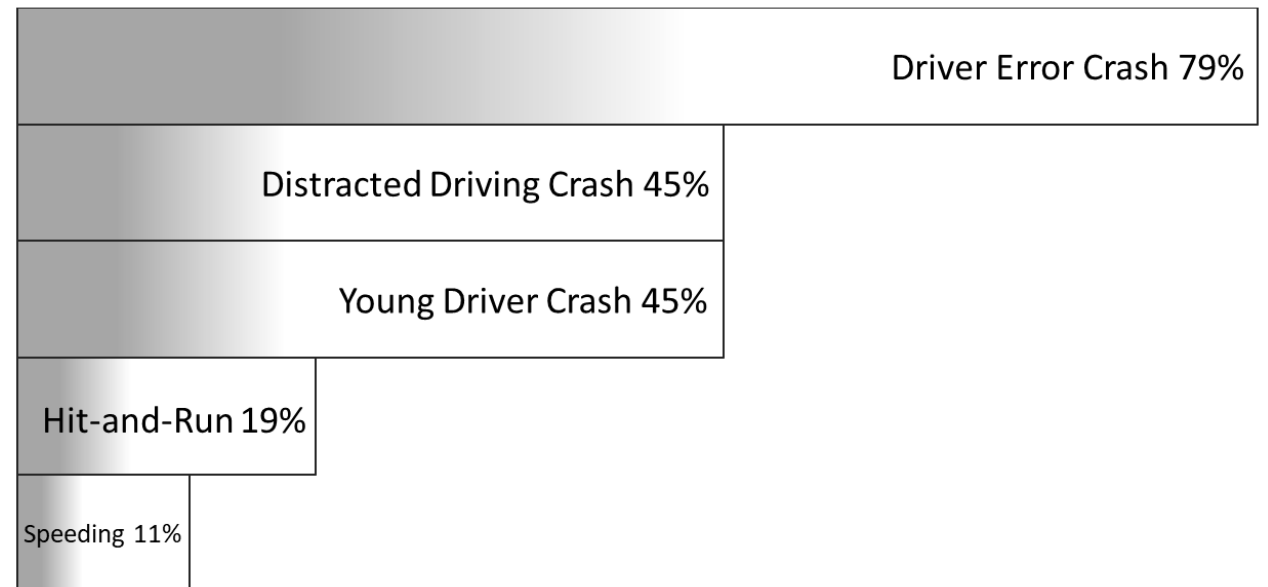
- Maintain NMDOT's statewide crash database (1978 to present)
- Crash data entry and analysis
  - Compile crash reports into a database
  - Improve data quality: Geocode, clean, and standardize
  - Perform crash trend analysis for NMDOT
  - Produce regular and ad-hoc reports, including statistics for each community in NM
- Most requested crash statistics:  
[gps.unm.edu](http://gps.unm.edu)

# Common Characteristics of New Mexico Crashes in 2021

## Crash-related Deaths

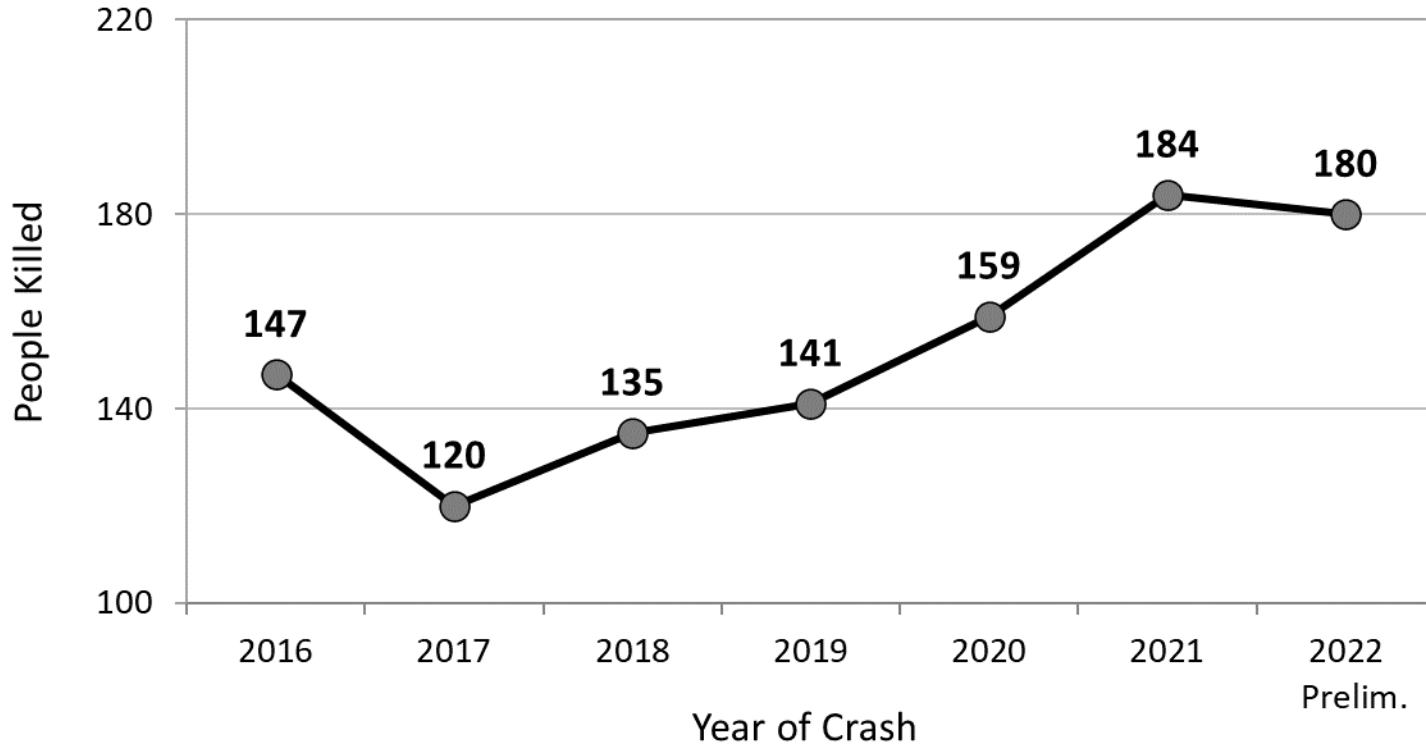


## All Crashes



\*These are not necessarily behaviors of the person killed.

## Unbelted People Killed in Crashes in New Mexico



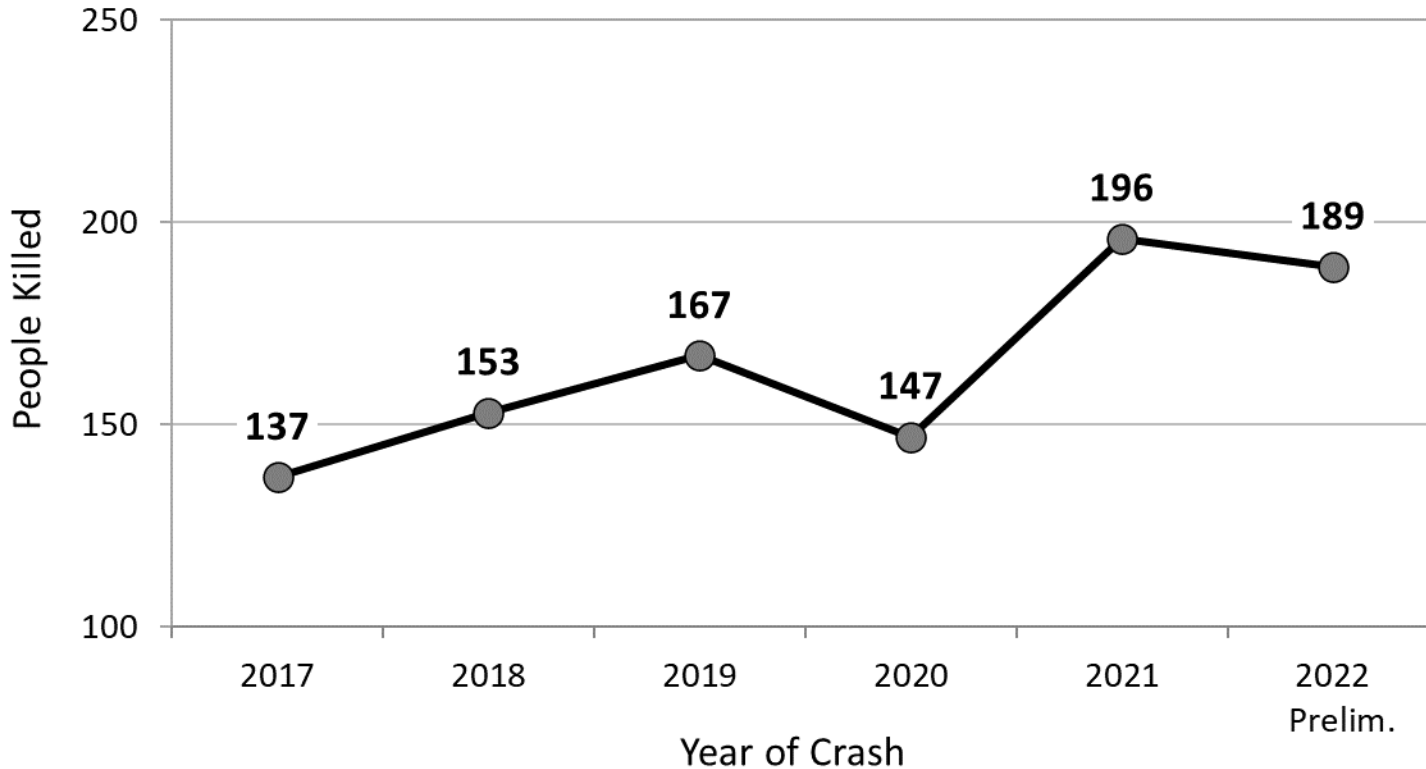
# Unbelted

These are the number unbelted people killed in passenger vehicles (passenger cars, vans, SUVs, and pickups) in crashes in New Mexico.

Typically, 70% occur on rural roadways, but urban roadways saw a record-high number of unbelted fatalities in 2020 and 2022.

2006 was the last time NM had more than 180 unbelted fatalities.

**People Killed in Distracted-Driving Crashes in New Mexico**



# Distracted

These are the number of people killed in distracted driving crashes in New Mexico. They account for 41% of all people killed in crashes in 2021.

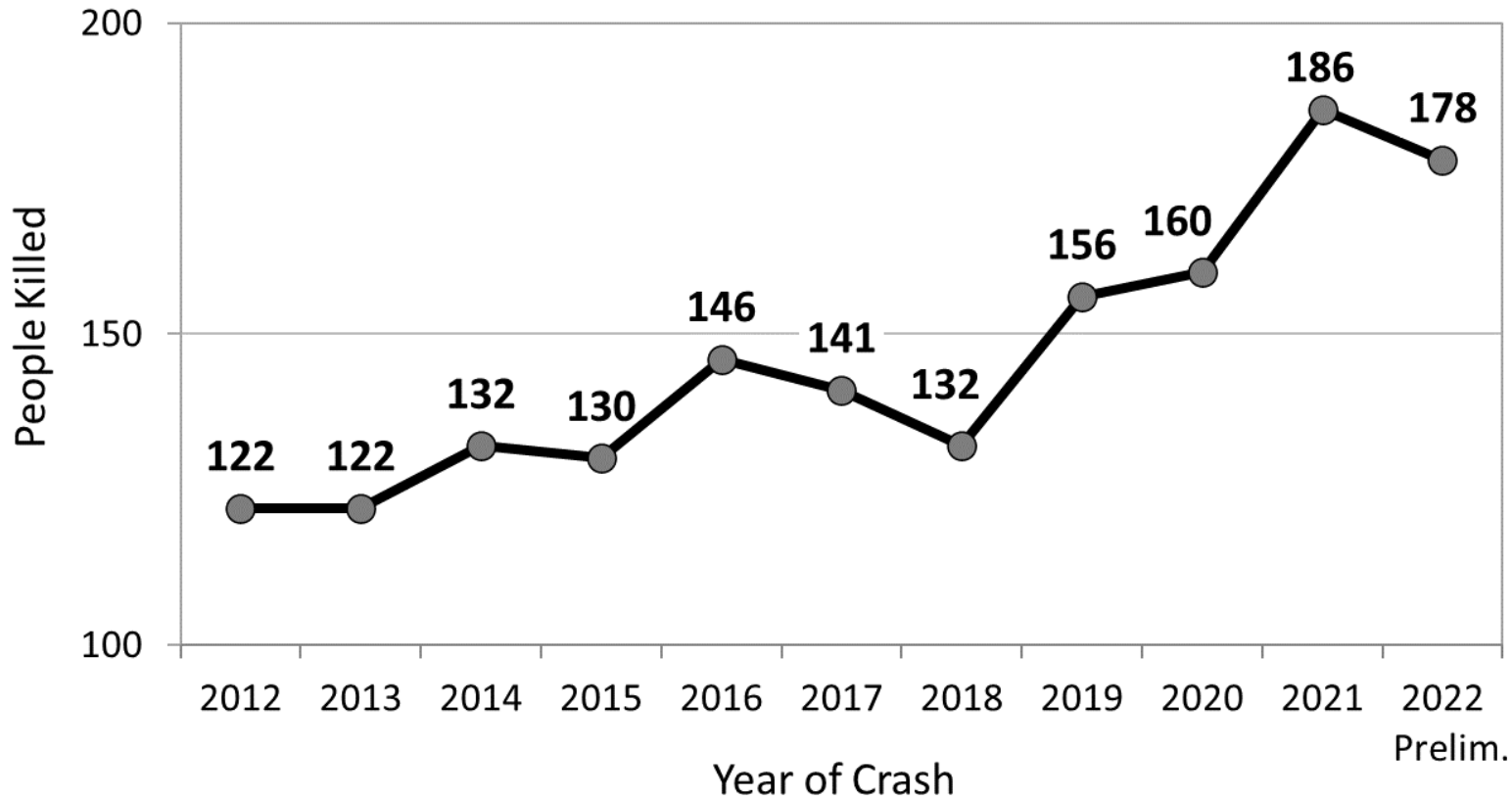
- 48% rural non-Interstate
- 39% urban
- 13% rural Interstate

“Texting” specifically is reported in very few crashes. Instead, many are reported with “driver inattention” as a contributing factor.



# Speeding

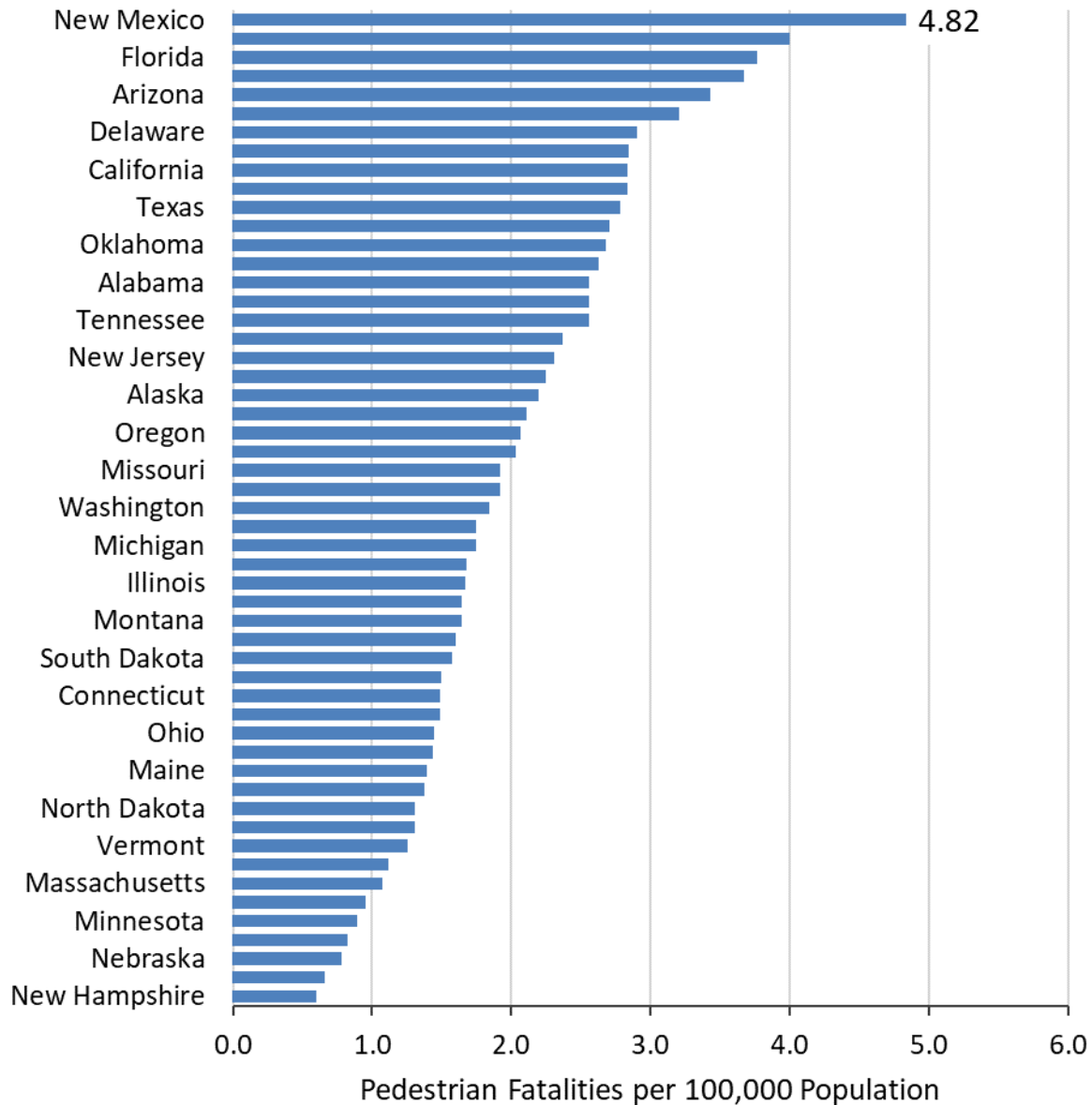
## People Killed in Speeding-related Crashes in New Mexico



These are the number people killed in speeding-related crashes in New Mexico.

52% rural roadways  
48% urban roadways

## 2021 State Pedestrian Fatality Rates

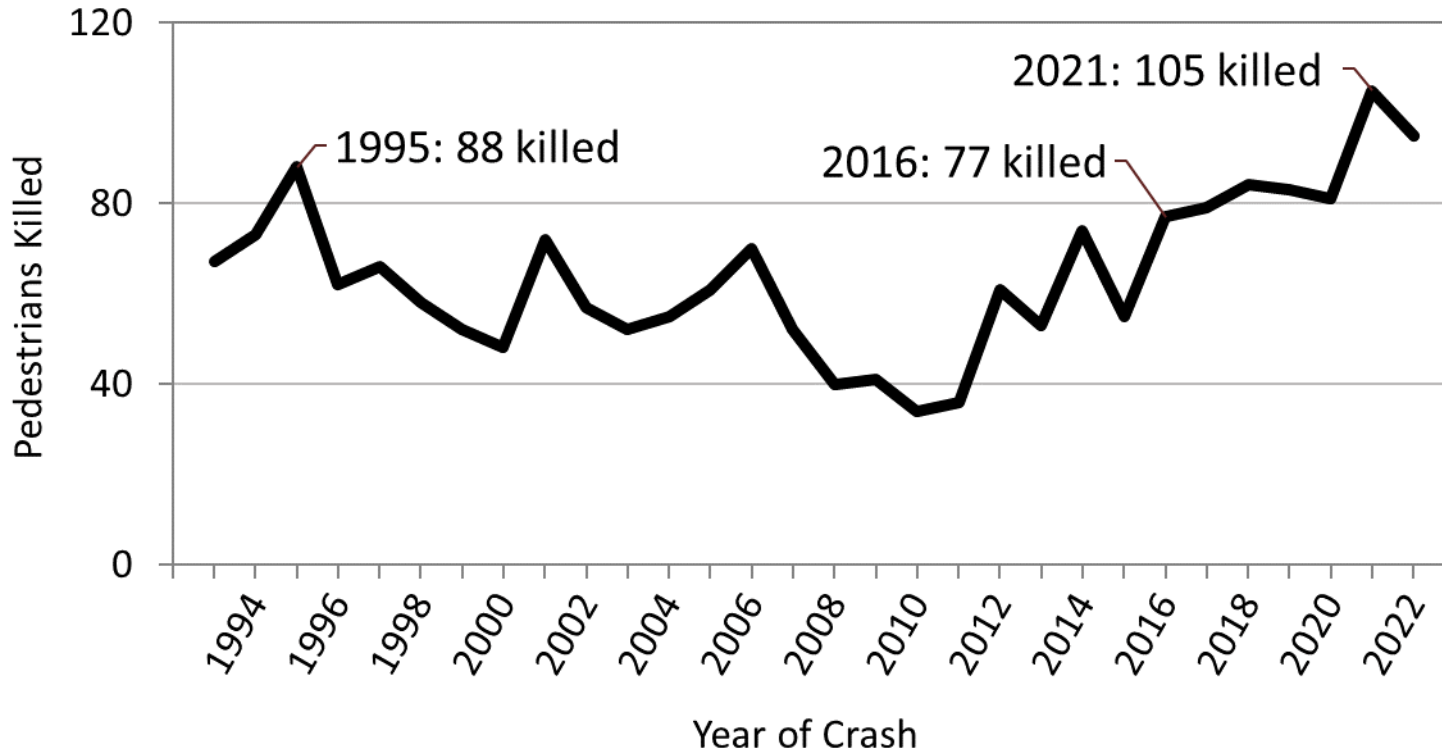


# Pedestrian Fatality Rates

New Mexico has the highest pedestrian fatality rate in the country.

Albuquerque has the second highest pedestrian fatality rate compared to other cities with populations above 500,000.

## Pedestrians Killed in Crashes in New Mexico



# Pedestrians

These are the number pedestrians killed in crashes in New Mexico.

70% on urban roadways

1995 was the last time NM had more than 80 pedestrians killed in crashes.

# Vision Zero and Safe-Systems Approach

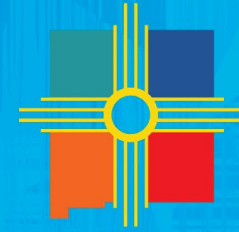
## NMDOT's Role – Traffic Safety Division



- Policy Implementation – following the national model/guidance
- Strategic Planning
- Data-Driven Decision-Making
- Partnerships and Collaboration
- Education and Awareness Campaigns
- Monitoring and Evaluation
- Innovative Solutions

# Questions?

- Alicia Ortiz, Acting Modal Director
  - 505-660-3304
  - [Alicia.Ortiz@dot.nm.gov](mailto:Alicia.Ortiz@dot.nm.gov)



New Mexico DEPARTMENT OF  
**TRANSPORTATION**  
MOBILITY FOR EVERYONE