



New Mexico Environment Department

PFAS Issues in Santa Fe County
Radioactive and Hazardous Materials Committee

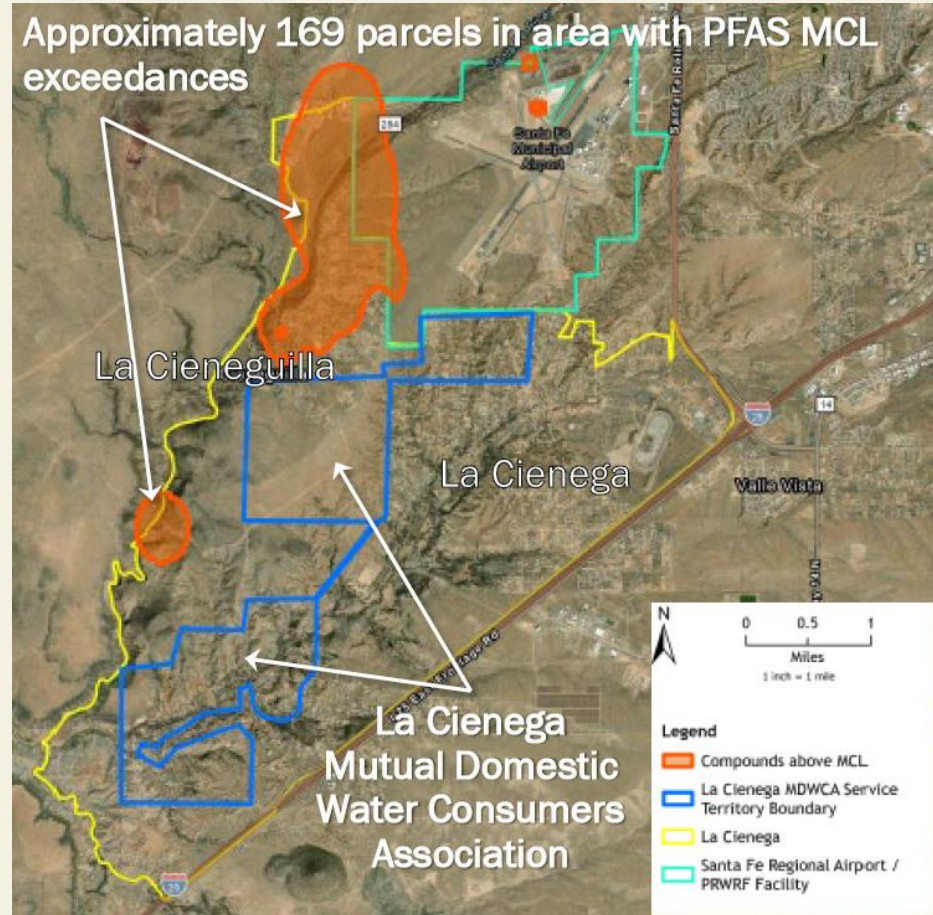
Jonas Armstrong, Director, Water Protection Division
Andrew Hautzinger, Special Projects Coordinator

December 8, 2025



PFAS Contamination in Santa Fe County

- PFAS detected in private wells in La Cieneguilla
- Up to 800 ppt; 4 ppt federal standard
- Likely historic use of firefighting foam (AFFF) near Santa Fe Regional Airport, possibly consumer products/septic systems
- Further testing and analysis by NMED to confirm scope of contamination



Source: Santa Fe County PFAS Investigation Data Update, INTERA



PFAS Health Impacts



Image: <https://pinellas.gov/per-and-polyfluoroalkyl-substances-pfas>

- Some cancers including kidney and testicular
- Liver disease
- Thyroid disease elevated cholesterol
- Pregnancy complications, lower birth weight
- Impacts on the immune system such as reduced vaccine response



NMED Response and Solutions

- Short Term: PFAS water filtration units provided to residents through a special appropriation
- 175+ residences signed up
- Ongoing plume delineation and groundwater monitoring
- Long Term: Community may want to consider drinking water regionalization while NMED pursues cleanup.





Filters for Private Wells

Point-of-Entry Filter (whole house)

- **Pioneer OP1L**
- **\$5k (installed)**
- **\$400 (annual)**
- **100,000 gallons filter capacity**



Costs may increase depending on the homeowner's private well treatment system and configuration.

Point-of-Use Filter (sink)

- **Kinetico K5 Reverse Osmosis**
- **\$2k installed (\$135 annual cartridge replacement)**



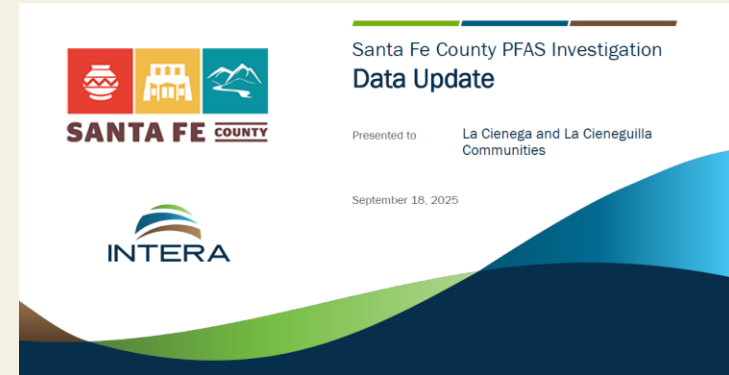


Ongoing Investigation

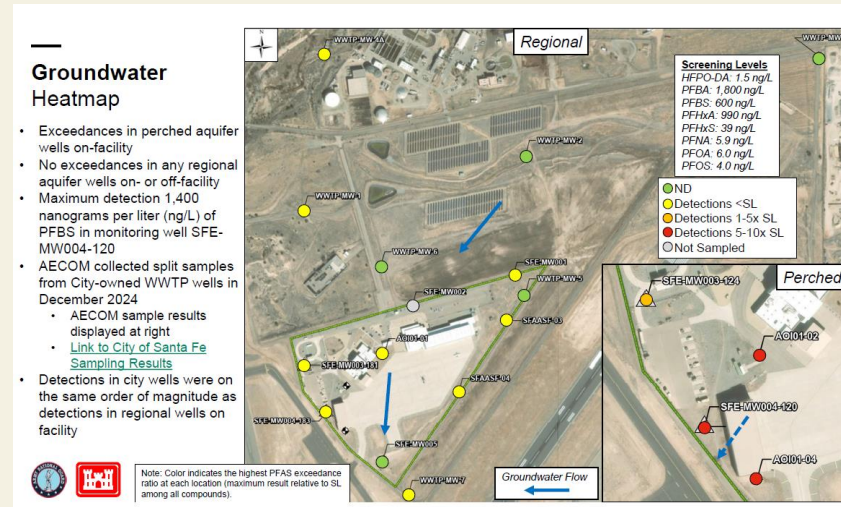
- Reports from
 - ▣ Army National Guard
 - ▣ Santa Fe County

- NMED performing additional sampling of soil, surface water, and groundwater

- Our goal is to identify long term cleanup options and pursue damages from responsible parties



Source: Santa Fe County PFAS Investigation Data Update, Intera



Source: Army National Guard