

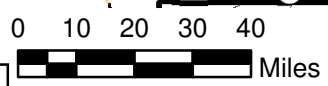
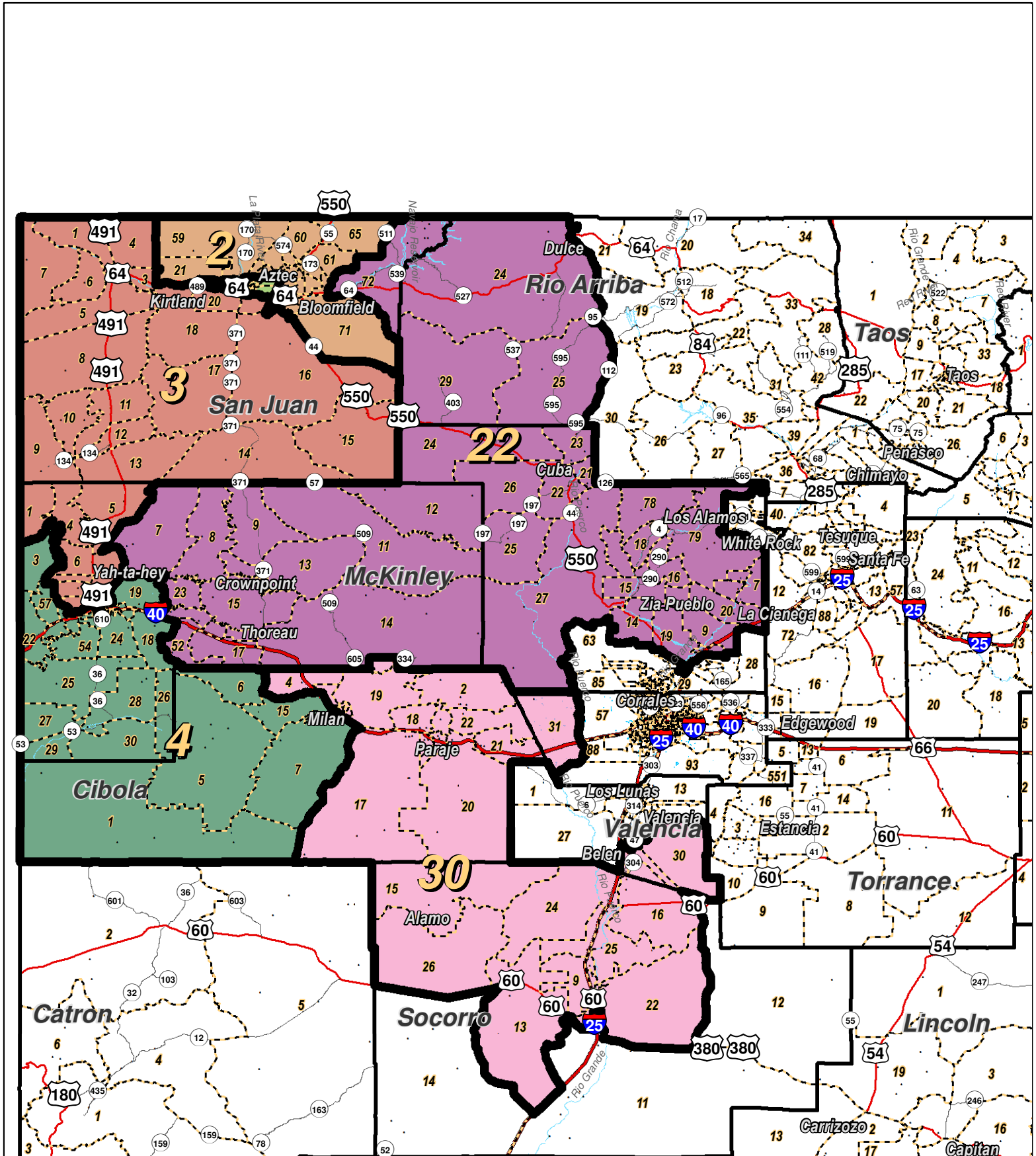
LEGEND Created: September 10, 2011

- ▭ Counties
- ↔ Interstate Highway
- ~ Rivers
- ~ US Highway



For the New Mexico Legislative Council Service

Research & Polling, Inc. distributes this map assuming no liability for any errors, omissions, or inaccuracies in the information provided regardless of the cause in reliance upon any maps.



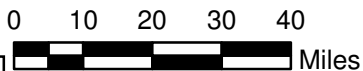
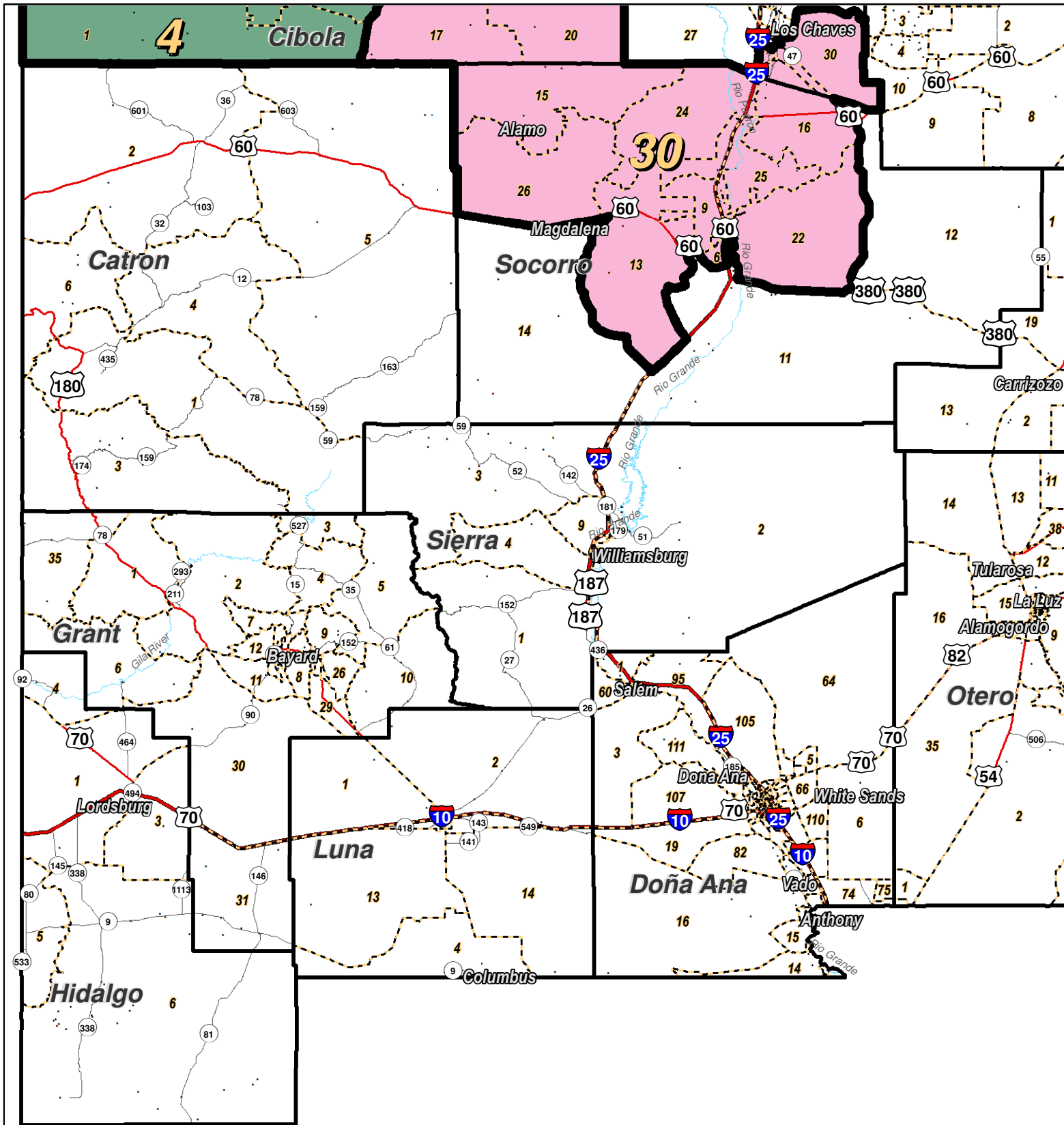
LEGEND Created: September 10, 2011

- Precincts
- Counties
- ~ Rivers
- ⊕ Lakes / Ponds
- ≡ Interstate
- US Highway
- - - State Highway

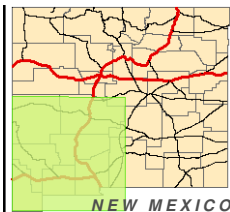


For the New Mexico
Legislative Council Service

Research & Polling, Inc. distributes this map assuming no liability for any errors, omissions, or inaccuracies in the information provided regardless of the cause in reliance upon any maps.



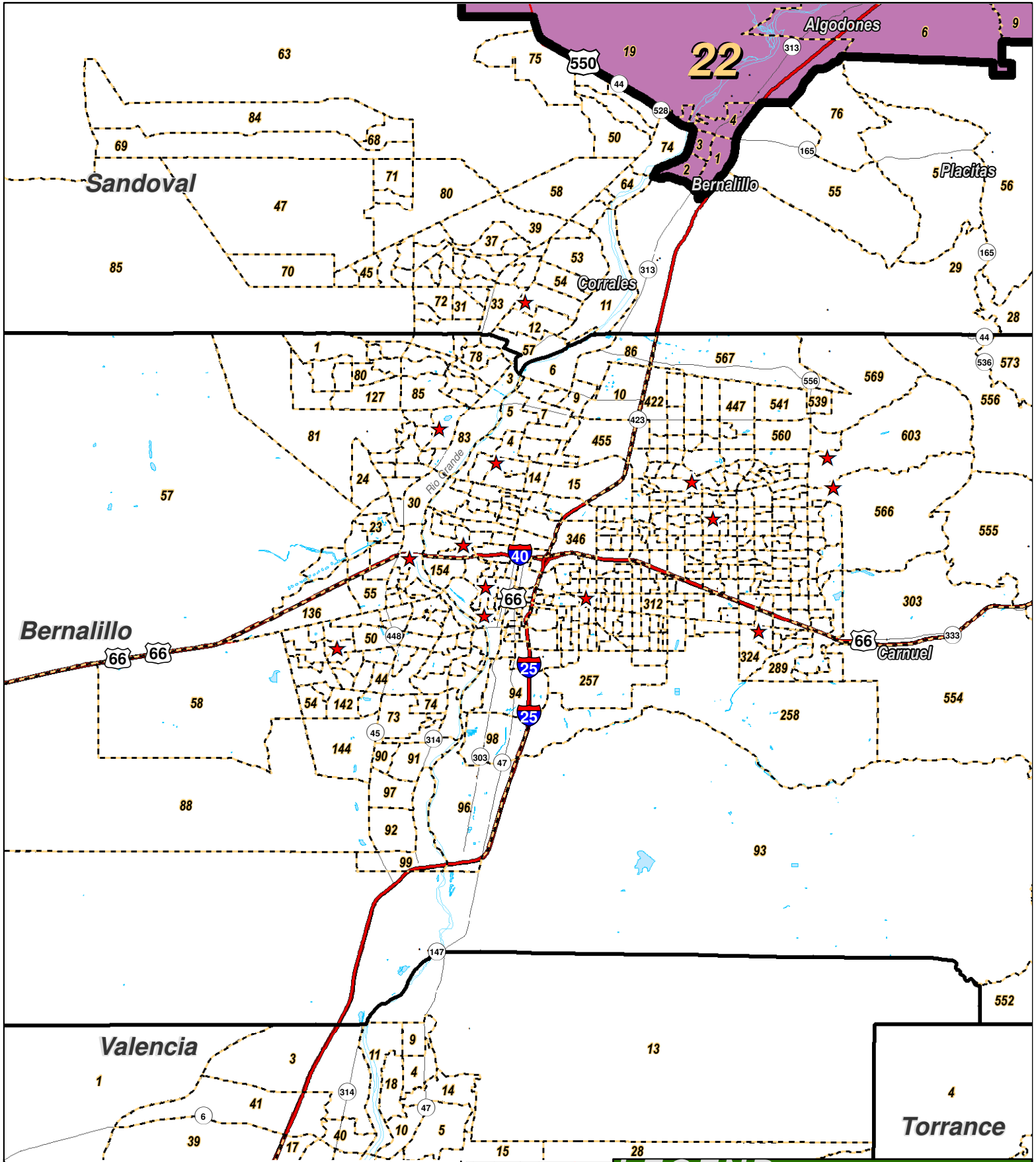
For the New Mexico
Legislative Council Service



LEGEND Created: September 10, 2011

- Precincts
- Counties
- ~ Rivers
- ⊕ Lakes / Ponds
- ≡ Interstate
- US Highway
- ~ State Highway

Research & Polling, Inc. distributes this map assuming no liability for any errors, omissions, or inaccuracies in the information provided regardless of the cause in reliance upon any maps.



0 1 2 3 4
Miles

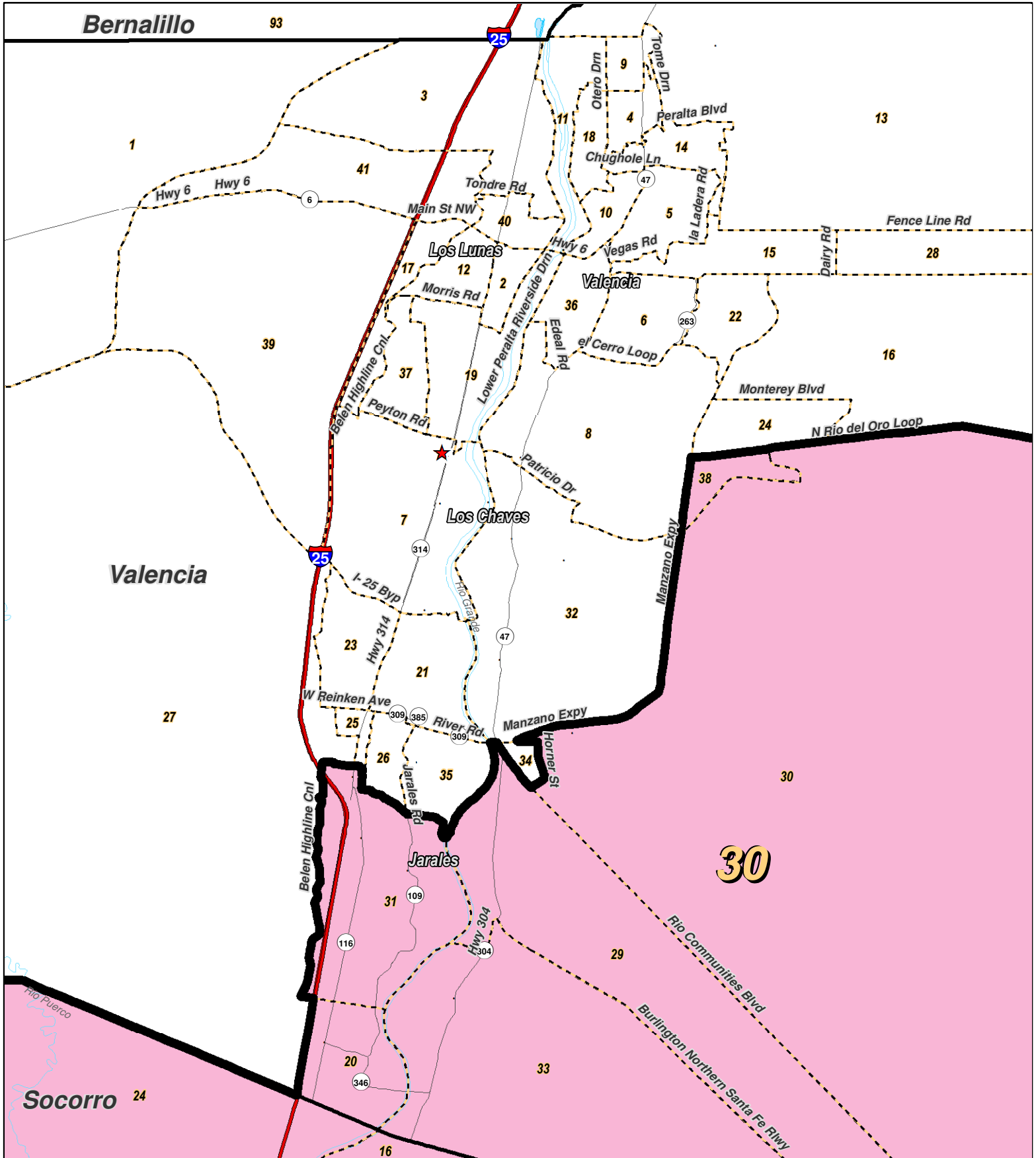
For the New Mexico
Legislative Council Service



LEGEND Created: September 10, 2011

- ★ Legislators
- ▭ Precincts
- ▭ Counties
- ~ Rivers
- ~ Lakes / Ponds
- ↔ Interstate
- ↔ US Highway
- ↔ State Highway

Research & Polling, Inc. distributes this map assuming no liability for any errors, omissions, or inaccuracies in the information provided regardless of the cause in reliance upon any maps.



RESEARCH & POLLING INC.

For the New Mexico Legislative Council Service

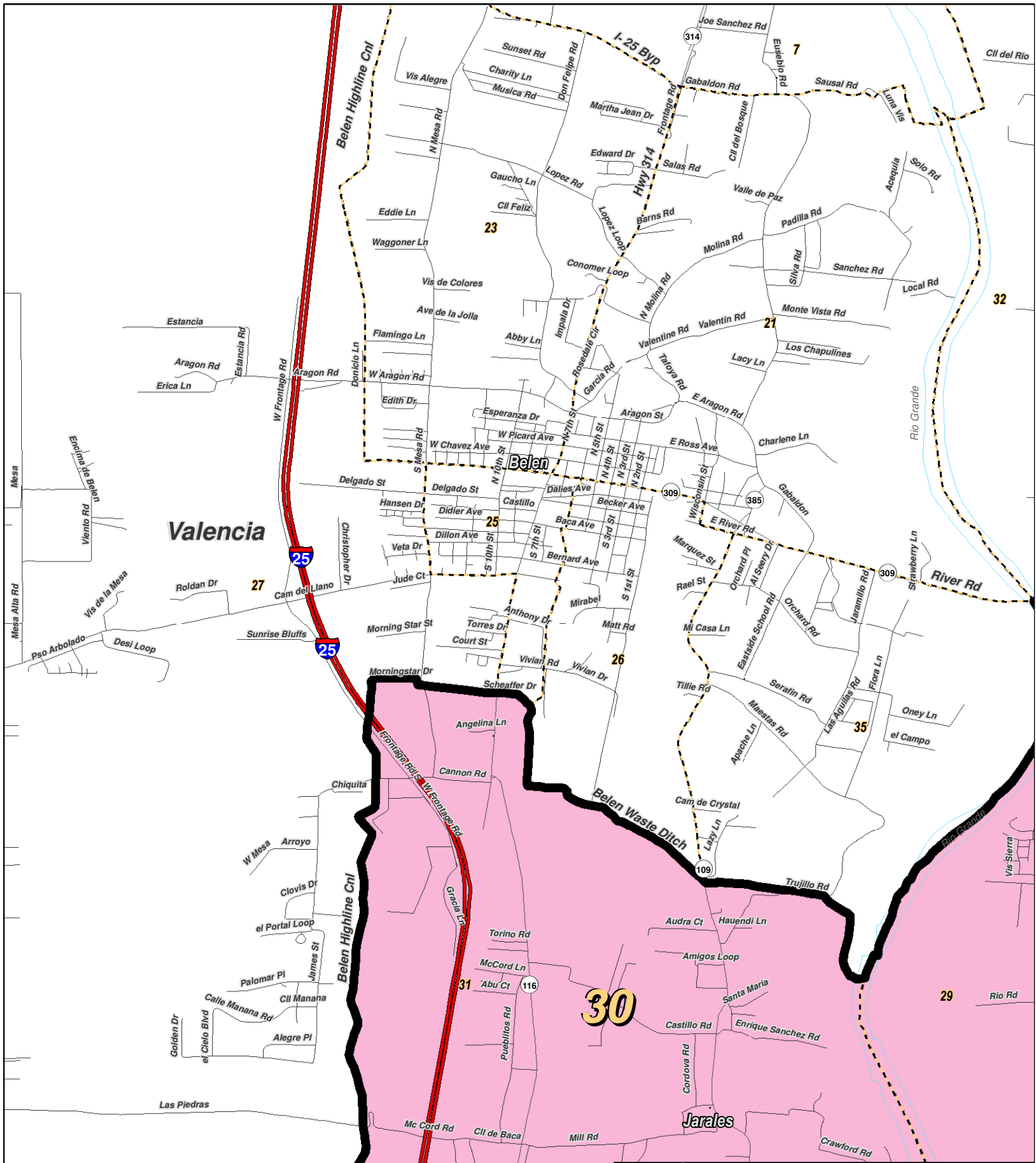
0 1 2 3 4 Miles



LEGEND Created: September 10, 2011

- ★ Legislators
- ▭ Precincts
- ▭ Counties
- ~ Rivers
- ~ Lakes / Ponds
- ↔ Interstate
- ↔ US Highway
- ↔ State Highway

Research & Polling, Inc. distributes this map assuming no liability for any errors, omissions, or inaccuracies in the information provided regardless of the cause in reliance upon any maps.



0 1 Miles

RESEARCH & POLLING INC.

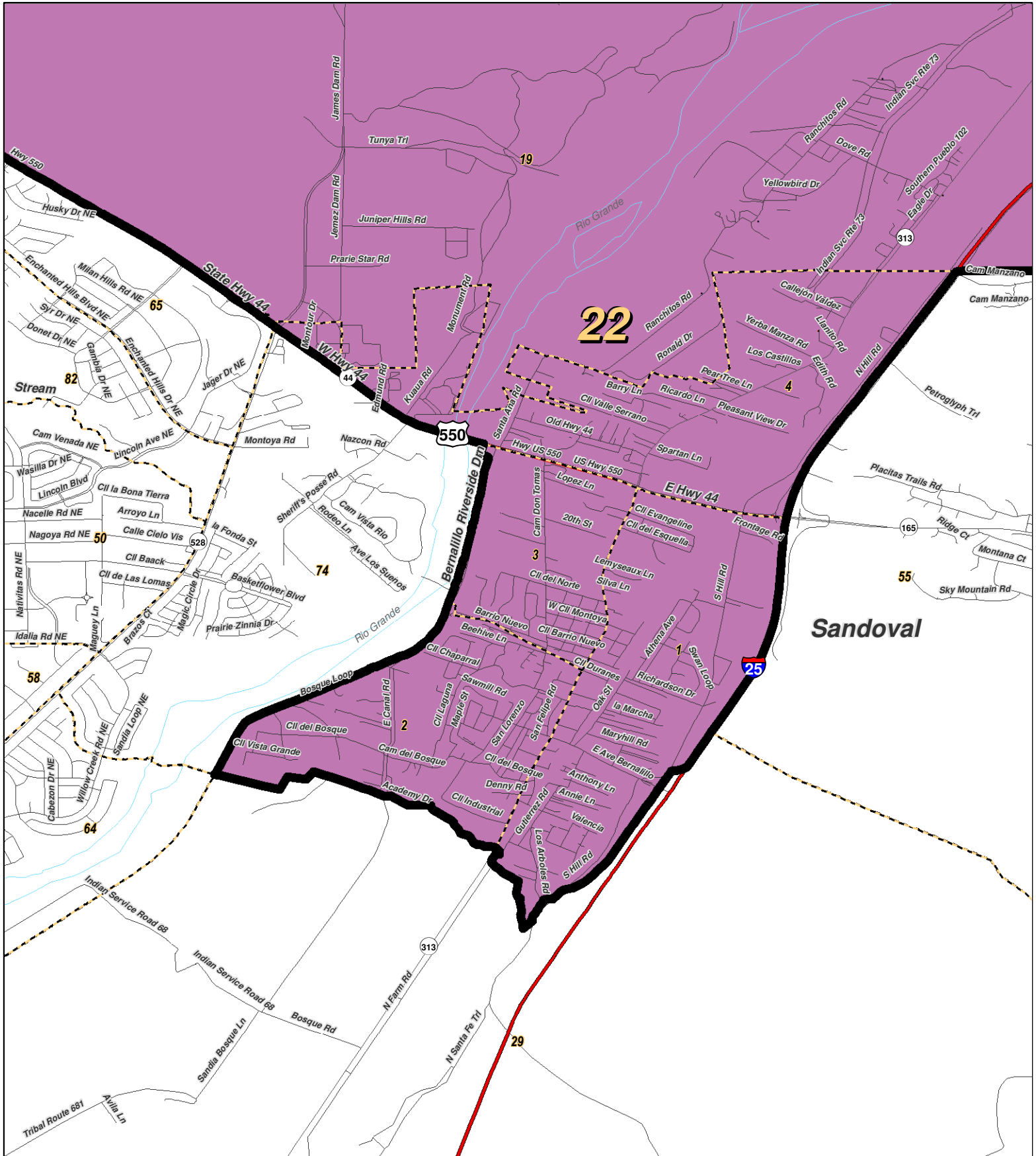
For the New Mexico Legislative Council Service



LEGEND Created: September 10, 2011

- ★ Legislators
- ▭ Precincts
- ▭ Counties
- ~ Rivers
- ~ Lakes / Ponds
- ~ Interstate
- ~ US Highway
- ~ State Highway

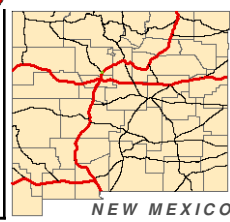
Research & Polling, Inc. distributes this map assuming no liability for any errors, omissions, or inaccuracies in the information provided regardless of the cause in reliance upon any maps.



0 1 Miles

RESEARCH & POLLING INC.

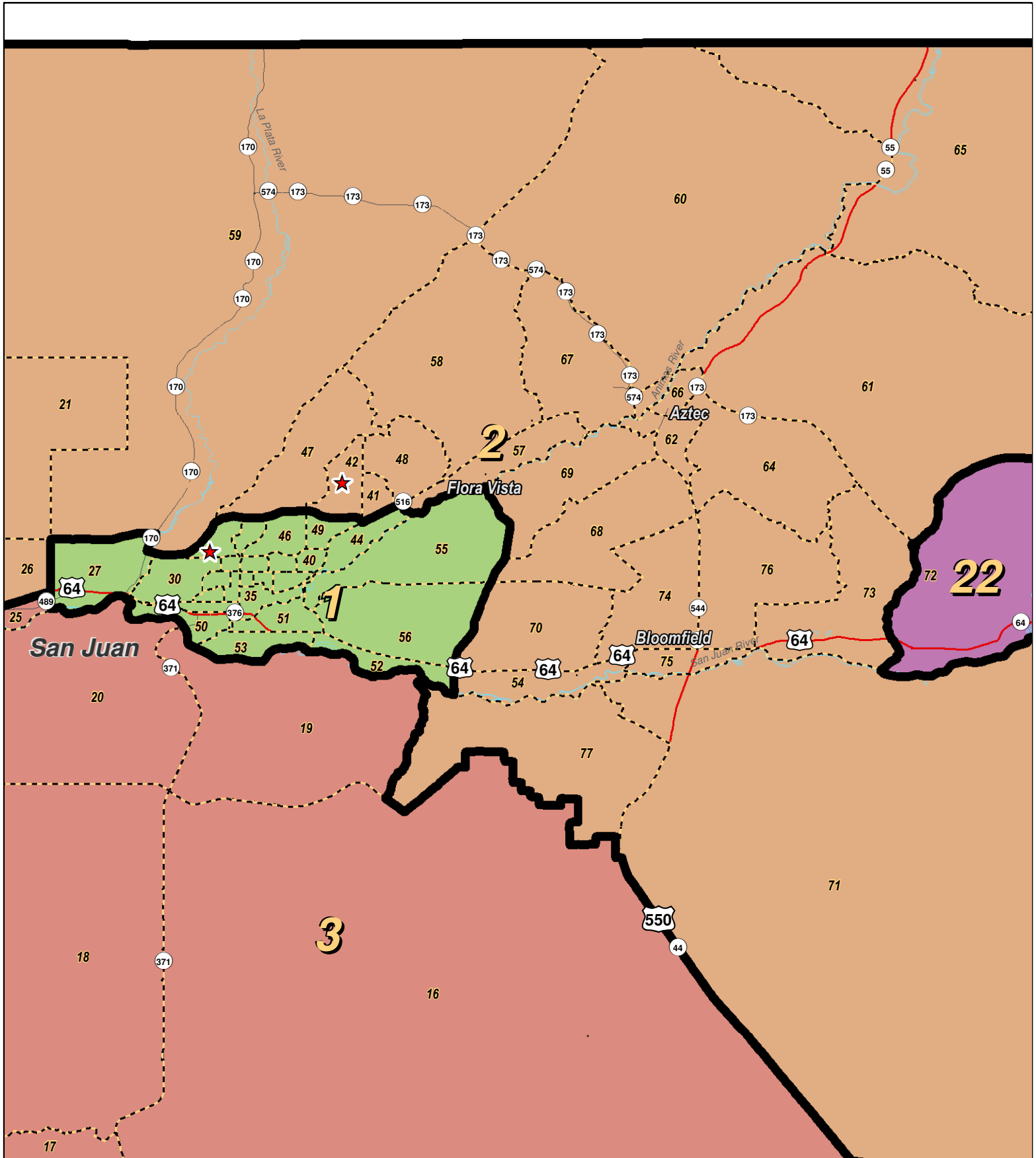
For the New Mexico Legislative Council Service



LEGEND Created: September 10, 2011

- ★ Legislators
- ▭ Precincts
- Counties
- ~ Rivers
- ☪ Lakes / Ponds
- ↔ Interstate
- ↔ US Highway
- ↔ State Highway

Research & Polling, Inc. distributes this map assuming no liability for any errors, omissions, or inaccuracies in the information provided regardless of the cause in reliance upon any maps.



0 1 2 3 4
Miles

RESEARCH & POLLING
INC.

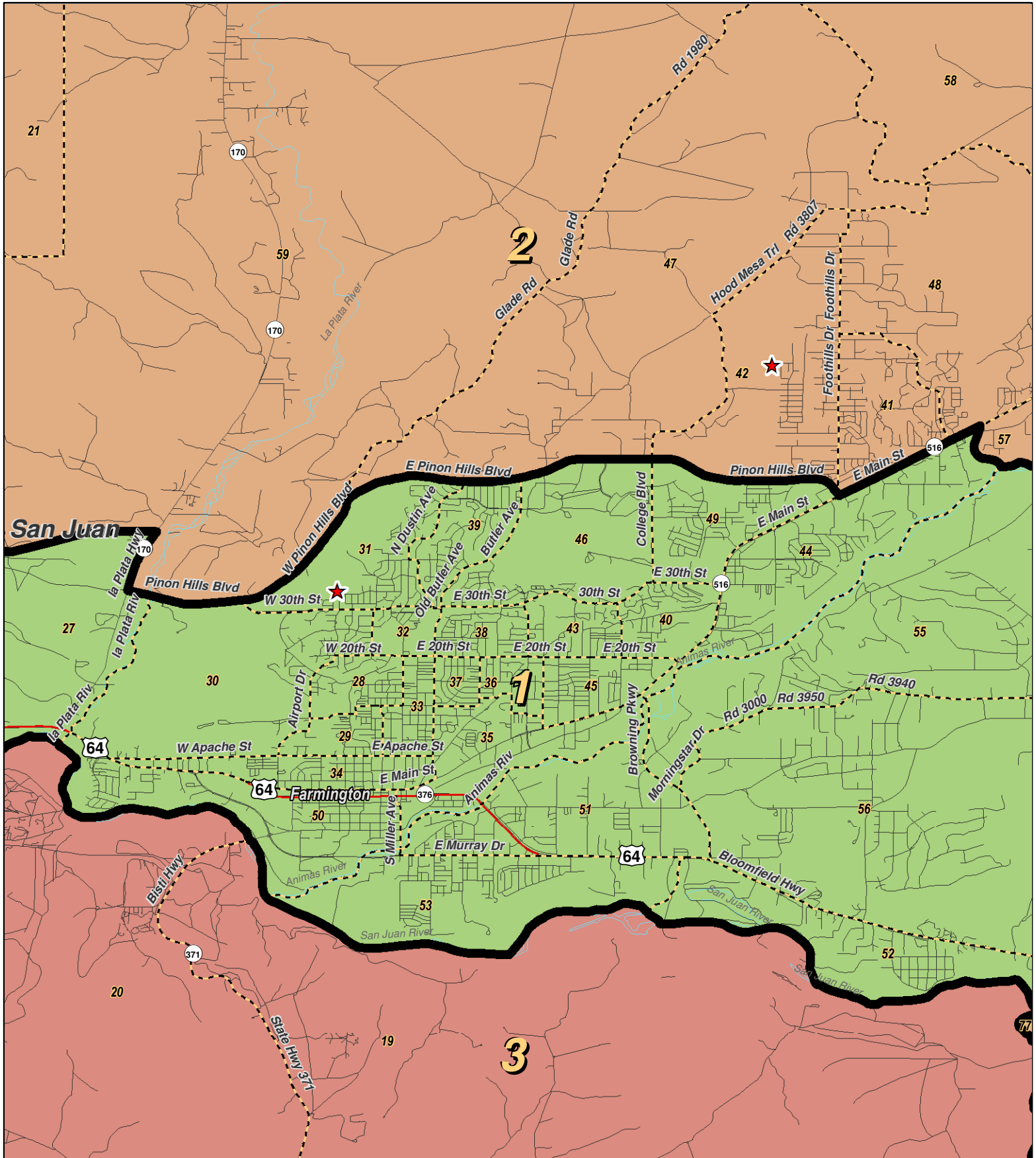
For the New Mexico
Legislative Council Service



LEGEND Created: September 10, 2011

Legislators	Rivers	Interstate
Precincts	Lakes / Ponds	US Highway
Counties		State Highway

Research & Polling, Inc. distributes this map assuming no liability for any errors, omissions, or inaccuracies in the information provided regardless of the cause in reliance upon any maps.



For the New Mexico Legislative Council Service

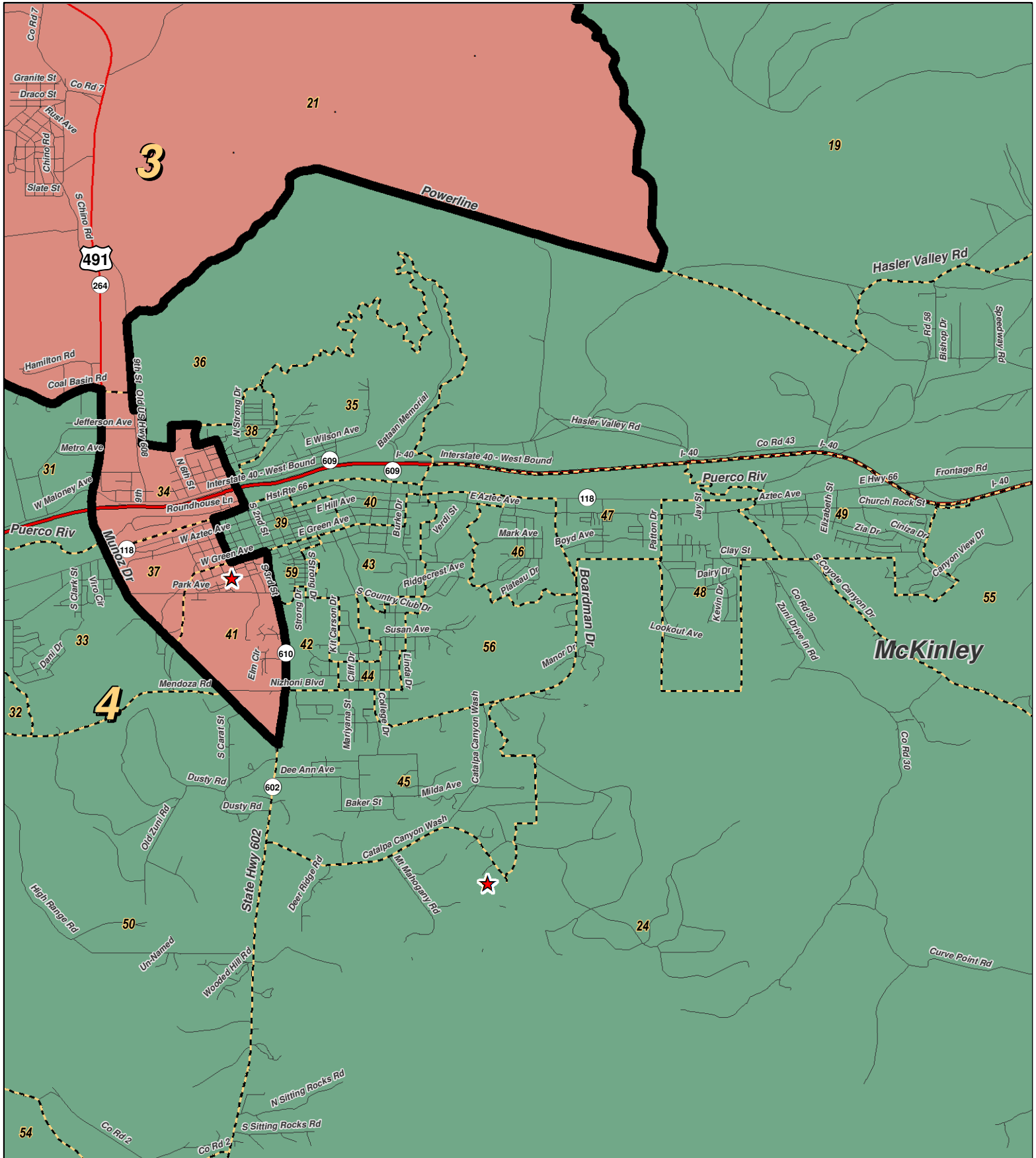
0 1 2 Miles



LEGEND Created: September 10, 2011

★ Legislators	~ Rivers	↔ Interstate
□ Precincts	☪ Lakes / Ponds	↔ US Highway
□ Counties		↔ State Highway

Research & Polling, Inc. distributes this map assuming no liability for any errors, omissions, or inaccuracies in the information provided regardless of the cause in reliance upon any maps.



0 1 Miles

RESEARCH & POLLING INC.

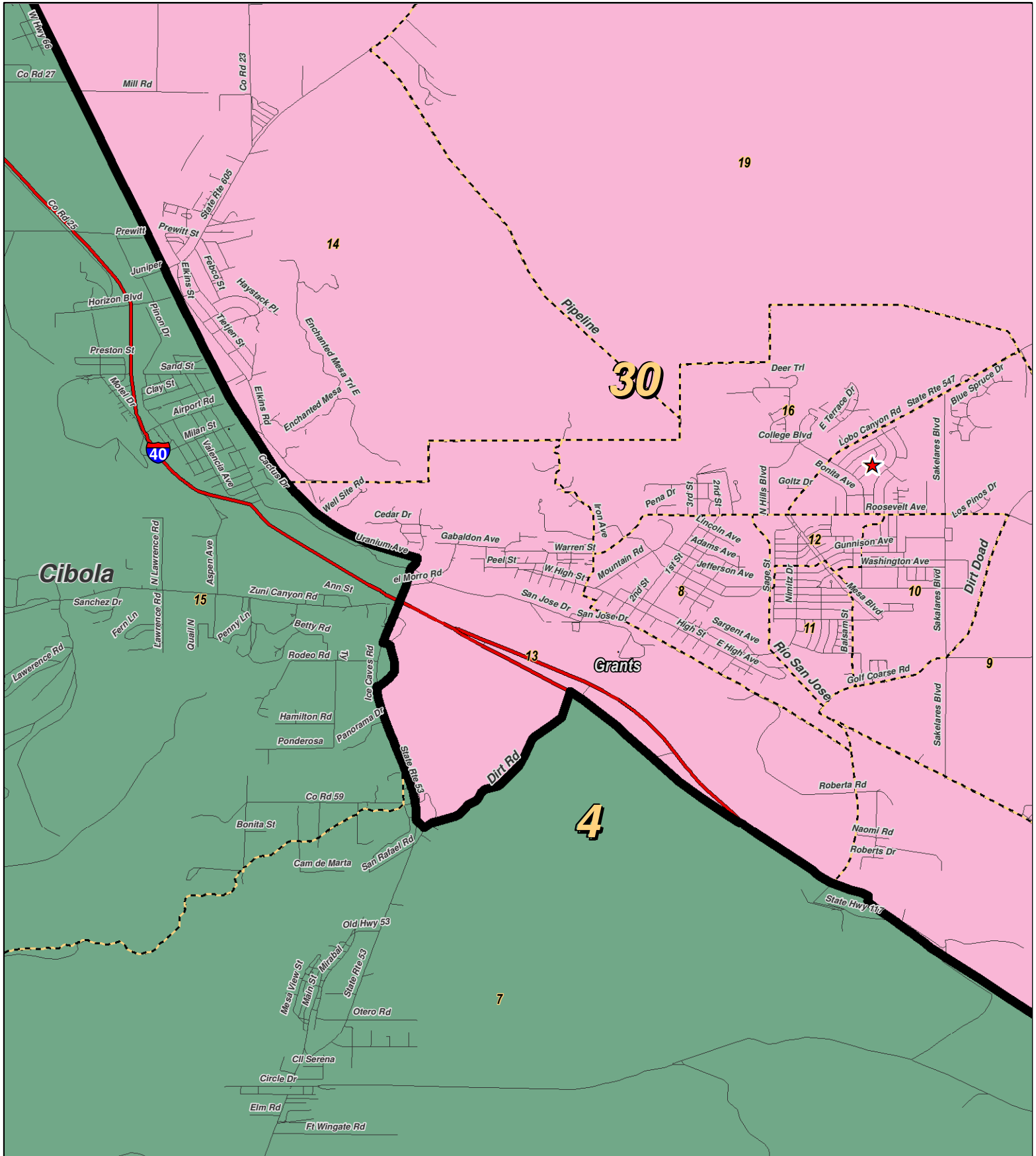
For the New Mexico Legislative Council Service



LEGEND Created: September 10, 2011

★ Legislators	~ Rivers	↗ Interstate
⬜ Precincts	⊕ Lakes / Ponds	↔ US Highway
⬜ Counties		⋯ State Highway

Research & Polling, Inc. distributes this map assuming no liability for any errors, omissions, or inaccuracies in the information provided regardless of the cause in reliance upon any maps.



RESEARCH & POLLING INC.

For the New Mexico Legislative Council Service

0 1 Miles

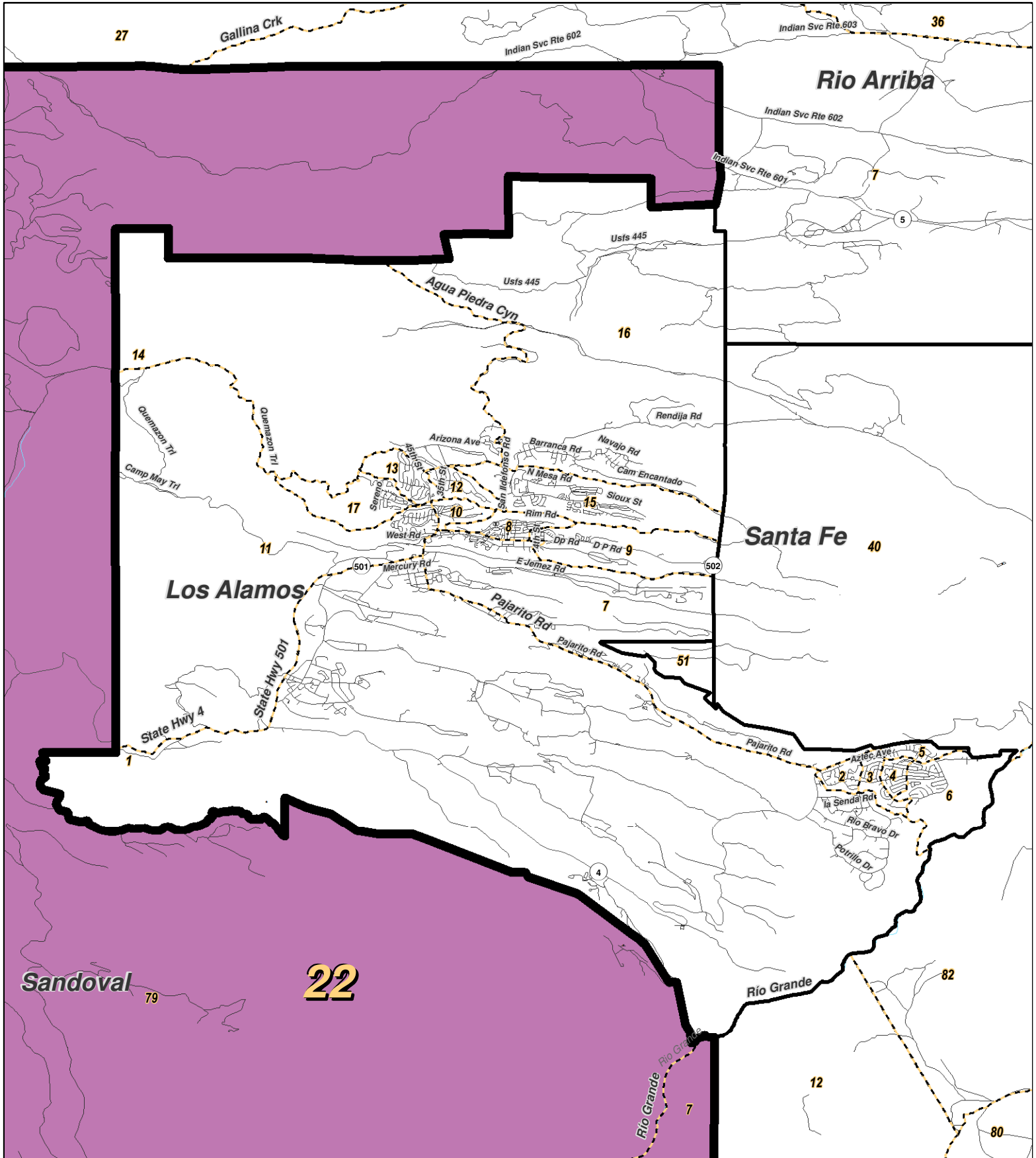
North arrow pointing up.



LEGEND Created: September 10, 2011

★ Legislators	~ Rivers	↗ Interstate
⬡ Precincts	⊕ Lakes / Ponds	↔ US Highway
⬢ Counties		⤵ State Highway

Research & Polling, Inc. distributes this map assuming no liability for any errors, omissions, or inaccuracies in the information provided regardless of the cause in reliance upon any maps.



0 1 2 3 Miles

RESEARCH & POLLING INC.

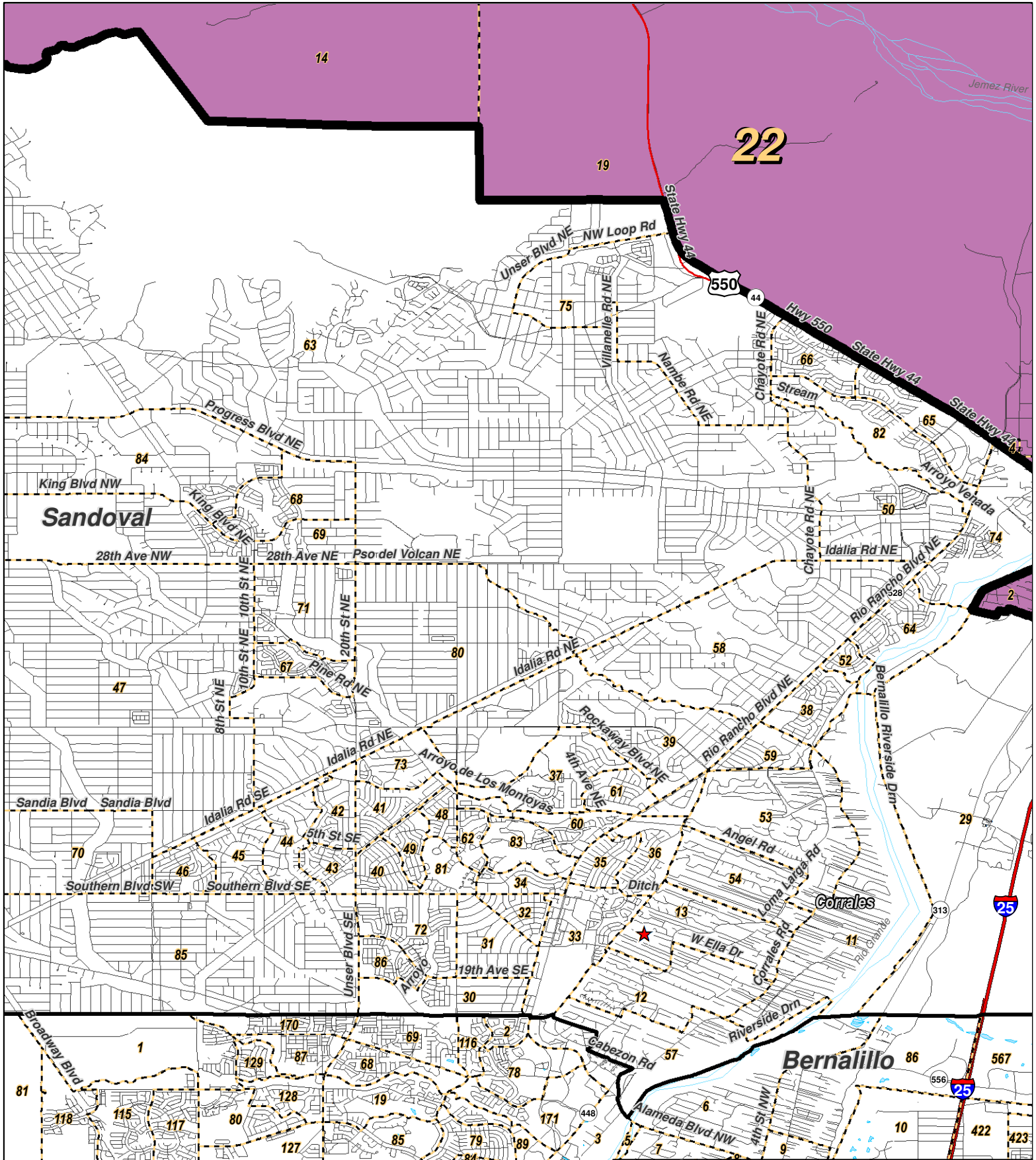
For the New Mexico Legislative Council Service



LEGEND Created: September 10, 2011

- ★ Legislators
- ▭ Precincts
- Counties
- ~ Rivers
- ☪ Lakes / Ponds
- ↔ Interstate
- ↔ US Highway
- ↔ State Highway

Research & Polling, Inc. distributes this map assuming no liability for any errors, omissions, or inaccuracies in the information provided regardless of the cause in reliance upon any maps.



0 1 2 Miles

RESEARCH & POLLING
INC.

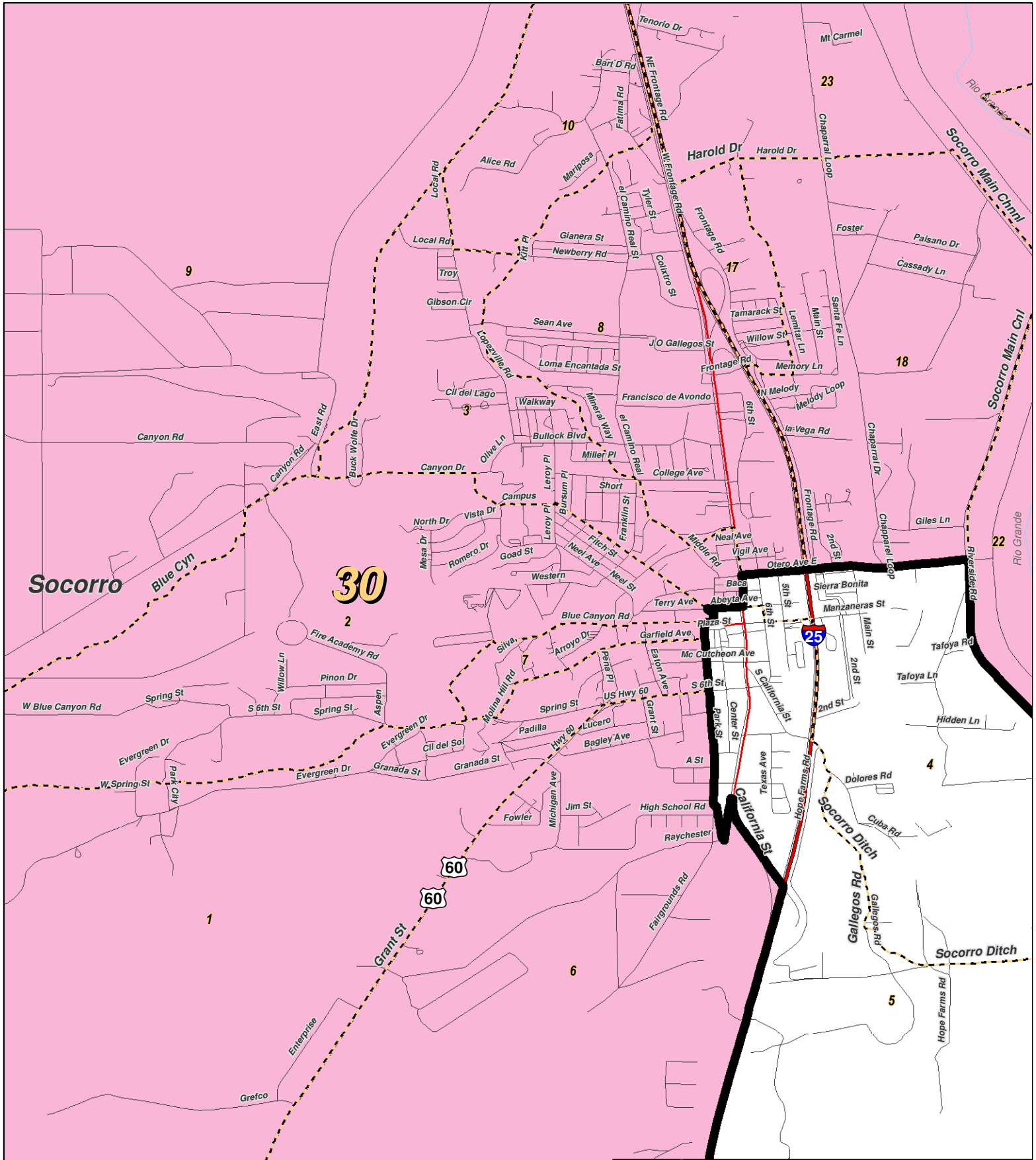
For the New Mexico
Legislative Council Service



LEGEND Created: September 10, 2011

★ Legislators	~ Rivers	↗ Interstate
⬡ Precincts	☪ Lakes / Ponds	↘ US Highway
⬢ Counties		~ State Highway

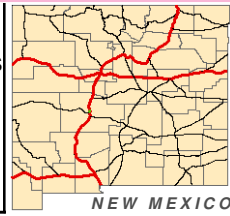
Research & Polling, Inc. distributes this map assuming no liability for any errors, omissions, or inaccuracies in the information provided regardless of the cause in reliance upon any maps.



0 0.9 Miles

RESEARCH & POLLING INC.

For the New Mexico Legislative Council Service



LEGEND Created: September 10, 2011

- ★ Legislators
- ~ Rivers
- ~ Interstate
- ▭ Precincts
- ☪ Lakes / Ponds
- ~ US Highway
- ▭ Counties
- ~ State Highway

Research & Polling, Inc. distributes this map assuming no liability for any errors, omissions, or inaccuracies in the information provided regardless of the cause in reliance upon any maps.

District	Pop	Deviation	Hispanic	Non-Hispanic Origin				
				White	Native American	Black	Asian	Other Races
1	46,647	-2,381 -4.9%	11,122 23.8%	23,149 49.6%	10,650 22.8%	388 0.8%	241 0.5%	1,097 2.4%
18+	33,376		6,870 20.6%	18,373 55.0%	7,112 21.3%	292 0.9%	195 0.6%	534 1.6%
2	47,229	-1,799 -3.7%	11,498 24.3%	28,400 60.1%	6,096 12.9%	183 0.4%	139 0.3%	913 1.9%
18+	33,877		7,108 21.0%	22,027 65.0%	4,020 11.9%	116 0.3%	109 0.3%	497 1.5%
3	47,556	-1,472 -3.0%	3,580 7.5%	3,334 7.0%	39,585 83.2%	80 0.2%	125 0.3%	852 1.8%
18+	32,733		2,224 6.8%	2,709 8.3%	27,280 83.3%	67 0.2%	110 0.3%	343 1.0%
4	47,937	-1,091 -2.2%	9,779 20.4%	7,473 15.6%	28,948 60.4%	275 0.6%	480 1.0%	982 2.0%
18+	33,734		6,734 20.0%	6,256 18.5%	19,691 58.4%	215 0.6%	365 1.1%	473 1.4%
22	49,493	465 0.9%	10,787 21.8%	6,281 12.7%	31,653 64.0%	130 0.3%	88 0.2%	554 1.1%
18+	34,750		7,625 21.9%	5,376 15.5%	21,307 61.3%	102 0.3%	82 0.2%	258 0.7%
30	47,623	-1,405 -2.9%	19,679 41.3%	14,580 30.6%	11,888 25.0%	487 1.0%	329 0.7%	660 1.4%
18+	35,494		13,869 39.1%	12,422 35.0%	8,140 22.9%	395 1.1%	257 0.7%	411 1.2%
Totals	286,485	Ideal: 49,028	66,445 23.2%	83,217 29.0%	128,820 45.0%	1,543 0.5%	1,402 0.5%	5,058 1.4%
18+	203,964		44,430 21.8%	67,163 32.9%	87,550 42.9%	1,187 0.6%	1,118 0.5%	2,516 1.2%

District Profile

District	Total Population	Deviation		Total Adult Native American	Adult Hispanic	Adult Non-Hispanic			Performance Measure		Registered Voters				
						White	American	Black	Dem	Rep	Total	% Dem	% Rep	% DTS	% Other
1	46,647	-2,381	-4.9%	23.4%	20.6%	55.0%	21.3%	0.9%	29.5%	70.5%	22,636	28.9%	51.8%	16.5%	2.8%
2	47,229	-1,799	-3.7%	13.8%	21.0%	65.0%	11.9%	0.3%	26.2%	73.8%	24,313	26.6%	54.2%	16.3%	2.8%
3	47,556	-1,472	-3.0%	85.6%	6.8%	8.3%	83.3%	0.2%	66.9%	33.1%	24,665	59.6%	21.4%	17.3%	1.7%
4	47,937	-1,091	-2.2%	61.6%	20.0%	18.5%	58.4%	0.6%	65.5%	34.5%	24,154	62.0%	18.9%	17.0%	2.1%
22	49,493	465	0.9%	63.2%	21.9%	15.5%	61.3%	0.3%	72.3%	27.7%	26,453	68.9%	15.3%	13.7%	2.0%
30	47,623	-1,405	-2.9%	25.0%	39.1%	35.0%	22.9%	1.1%	57.7%	42.3%	26,047	58.2%	26.0%	13.0%	2.9%
NM	286,485	Ideal: 49,028		45.2%	21.8%	32.9%	42.9%	0.6%	52.9%	47.1%	148,268	51.3%	30.7%	15.6%	2.4%

NM Senate: SD_187357.1

District Definitions by County and Precinct

SENATE DISTRICT ONE.--Senate district one is composed of San Juan county precincts 27 through 40, 43 through 46, 49 through 53, 55 and 56.

SENATE DISTRICT TWO.--Senate district two is composed of San Juan county precincts 21, 26, 41, 42, 47, 48, 54, 57 through 71 and 73 through 77.

SENATE DISTRICT THREE.--Senate district three is composed of McKinley county precincts 1, 2, 4 through 6, 20, 21, 34, 37 and 41; and San Juan county precincts 1 through 20 and 22 through 25.

SENATE DISTRICT FOUR.--Senate district four is composed of Cibola county precincts 1, 5 through 7 and 15; and McKinley county precincts 3, 18, 19, 22, 24 through 33, 35, 36, 38 through 40, 42 through 50 and 54 through 59.

SENATE DISTRICT TWENTY-TWO.--Senate district twenty-two is composed of McKinley county precincts 7 through 17, 23, 52 and 53; Rio Arriba county precincts 24, 25 and 29; San Juan county precinct 72; and Sandoval county precincts 1 through 4, 6 through 10, 14 through 27, 78 and 79.

SENATE DISTRICT THIRTY.--Senate district thirty is composed of Bernalillo county precinct 31; Cibola county precincts 2 through 4, 8 through 14 and 16 through 25; Socorro county precincts 1 through 3, 6 through 10, 13 and 15 through 26; and Valencia county precincts 20, 29 through 31, 33 and 38.