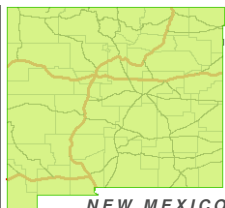


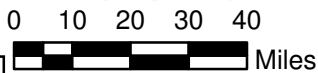
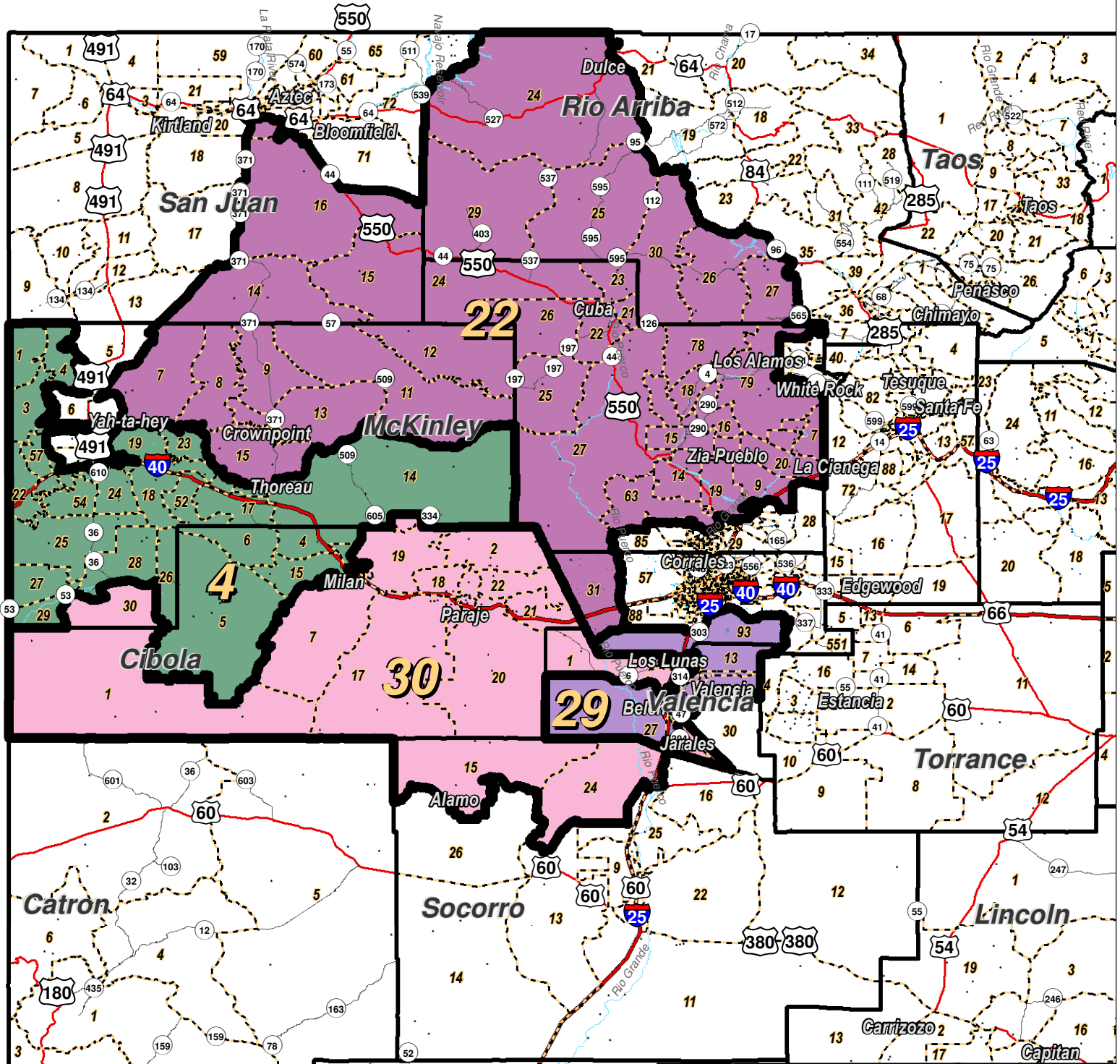
For the New Mexico
Legislative Council Service



LEGEND Created: September 05, 2011

- Counties
- Interstate Highway
- Rivers
- US Highway

Research & Polling, Inc. distributes this map assuming no liability for any errors, omissions, or inaccuracies in the information provided regardless of the cause in reliance upon any maps.



LEGEND

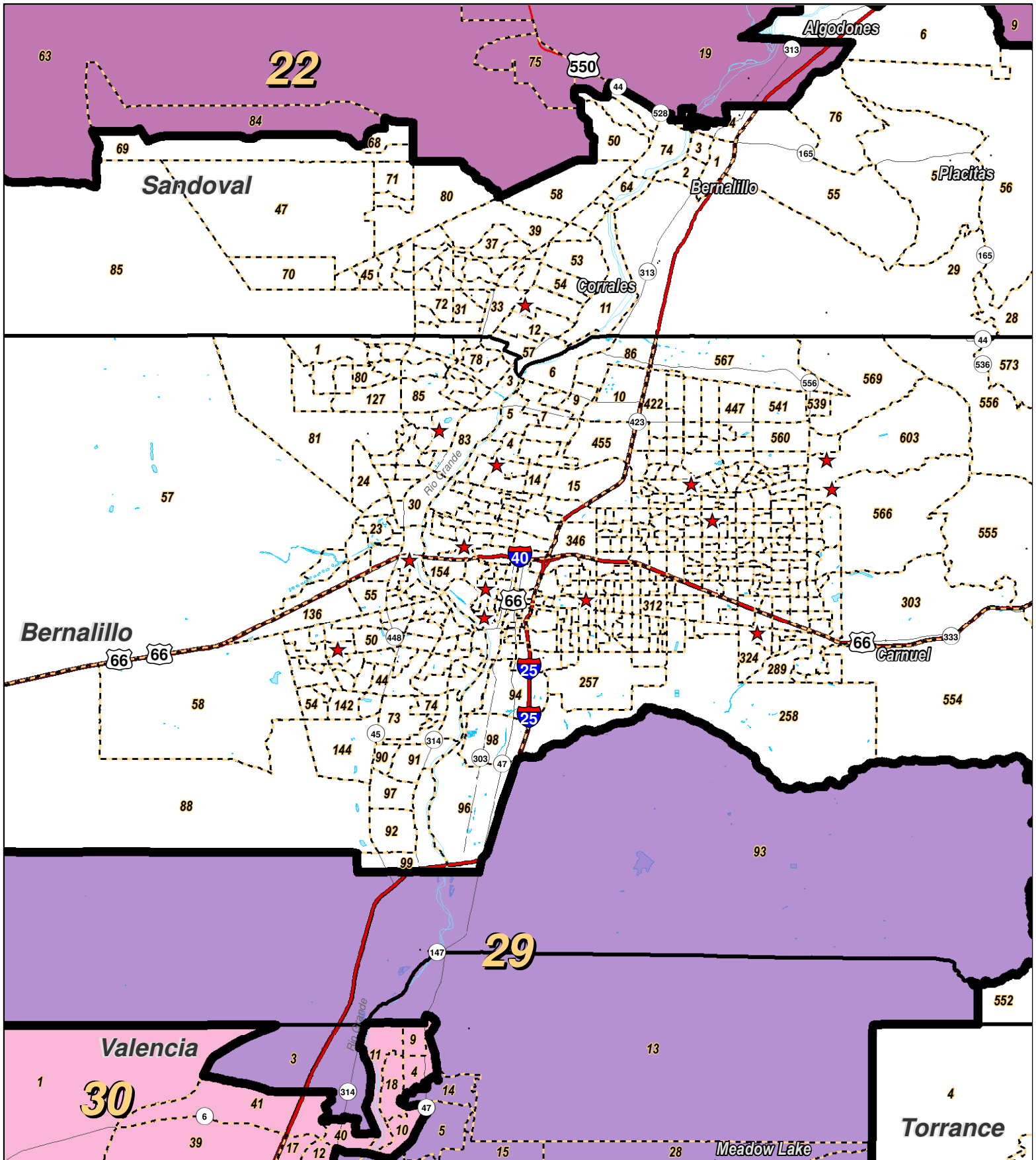
Created: September 05, 2011

- Precincts
- Counties
- Rivers
- Lakes / Ponds
- Interstate
- US Highway
- State Highway



For the New Mexico
Legislative Council Service

Research & Polling, Inc. distributes this map assuming no liability for any errors, omissions, or inaccuracies in the information provided regardless of the cause in reliance upon any maps.



0 1 2 3 4 Miles

RESEARCH & POLLING INC.

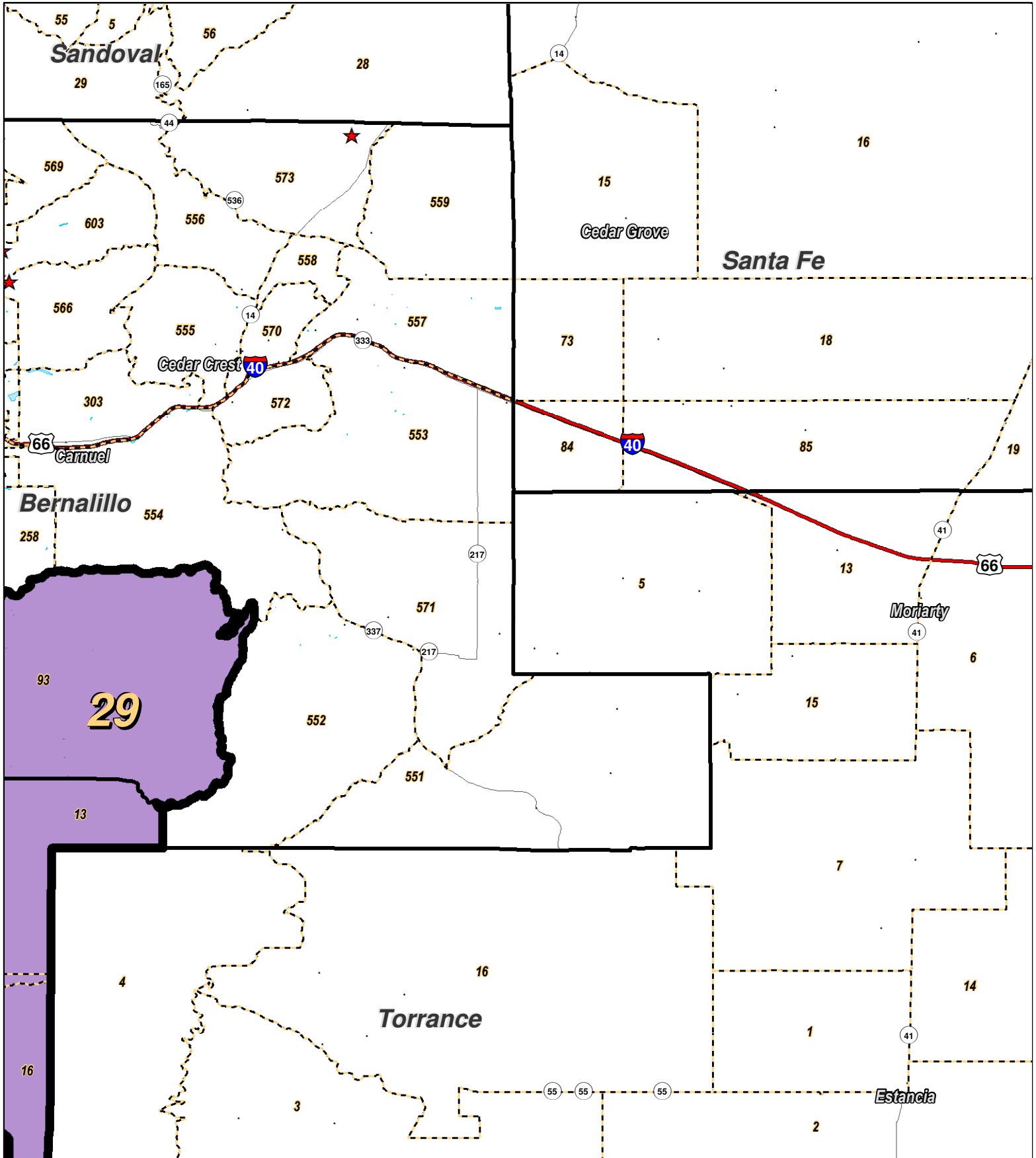
For the New Mexico Legislative Council Service



LEGEND Created: September 05, 2011

- ★ Legislators
- ~ Rivers
- ~ Interstate
- Precincts
- ☪ Lakes / Ponds
- ~ US Highway
- Counties
- ~ State Highway

Research & Polling, Inc. distributes this map assuming no liability for any errors, omissions, or inaccuracies in the information provided regardless of the cause in reliance upon any maps.



0 1 2 3 4
Miles

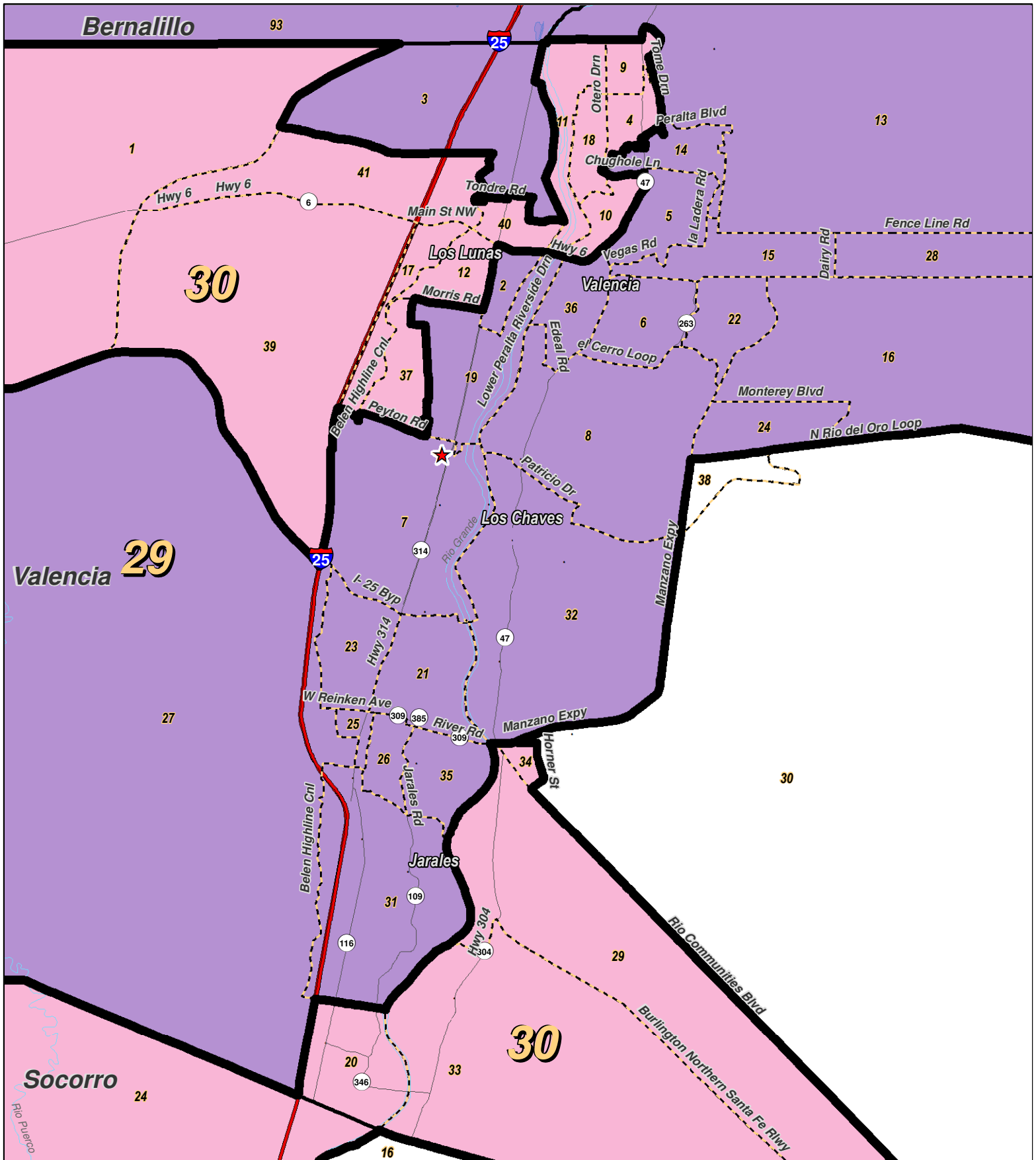
For the New Mexico
Legislative Council Service



LEGEND Created: September 05, 2011

★ Legislators	~ Rivers	↔ Interstate
□ Precincts	☞ Lakes / Ponds	↔ US Highway
□ Counties		↔ State Highway

Research & Polling, Inc. distributes this map assuming no liability for any errors, omissions, or inaccuracies in the information provided regardless of the cause in reliance upon any maps.



0 1 2 3 4 Miles

RESEARCH & POLLING INC.

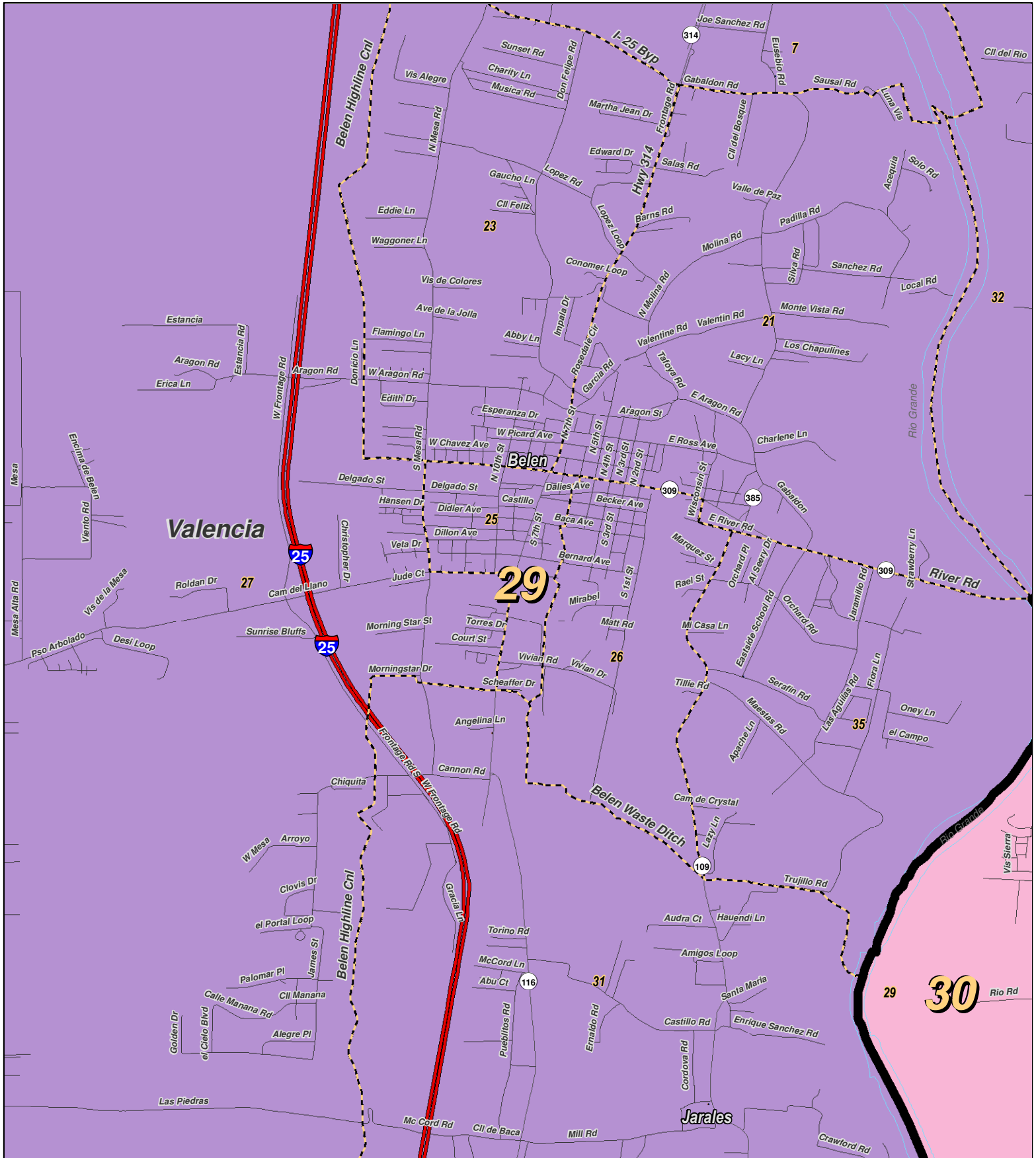
For the New Mexico Legislative Council Service



LEGEND Created: September 05, 2011

- ★ Legislators
- ▭ Precincts
- ▭ Counties
- ~ Rivers
- ☪ Lakes / Ponds
- ⚡ Interstate
- ⚡ US Highway
- ⚡ State Highway

Research & Polling, Inc. distributes this map assuming no liability for any errors, omissions, or inaccuracies in the information provided regardless of the cause in reliance upon any maps.



0 1 Miles

RESEARCH & POLLING INC.

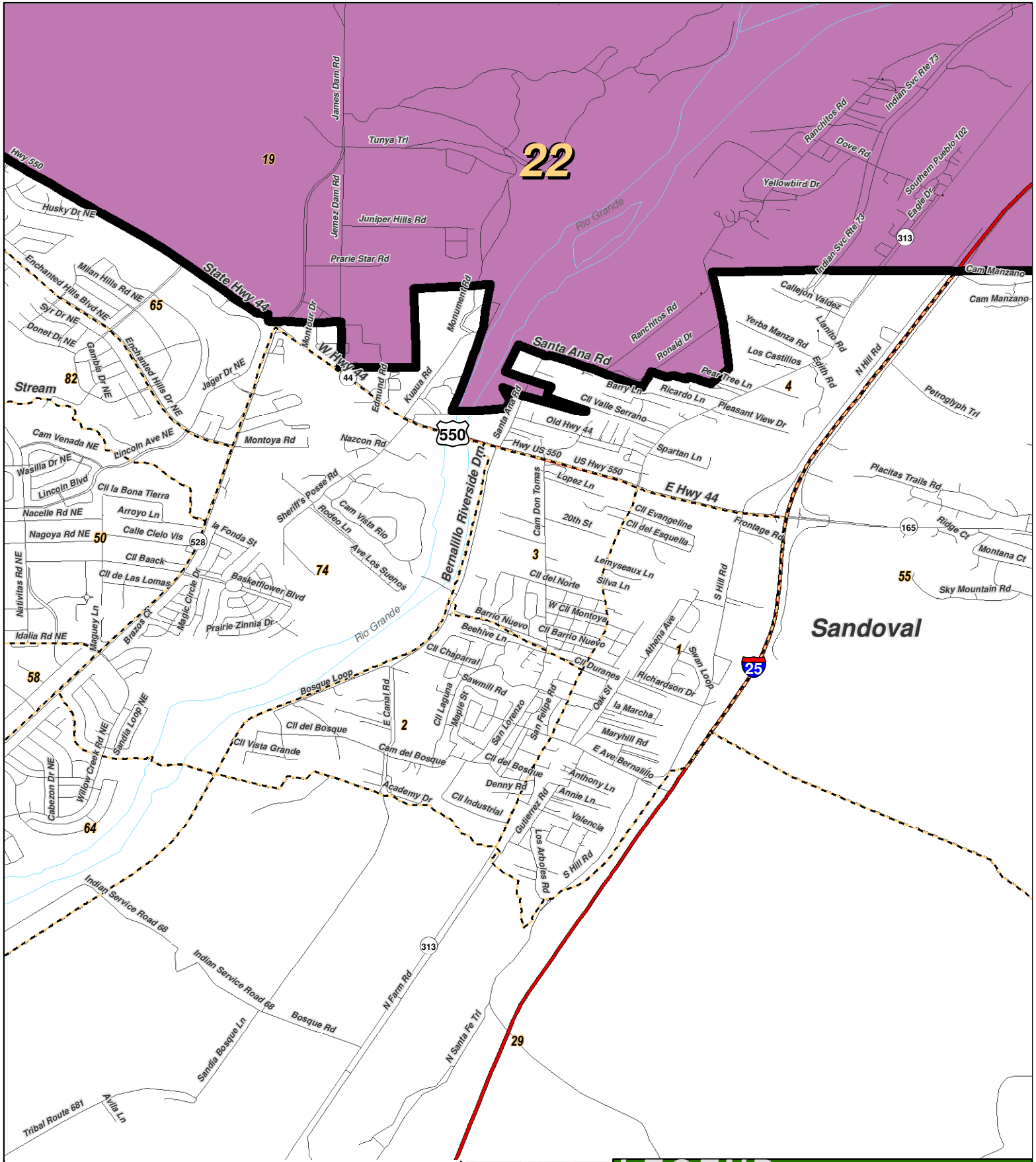
For the New Mexico Legislative Council Service



LEGEND Created: September 05, 2011

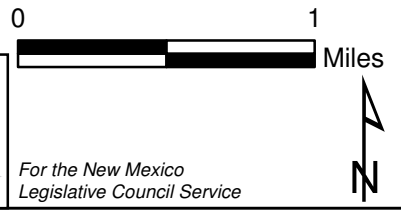
- ★ Legislators
- ~ Rivers
- ~ Interstate
- ▭ Precincts
- ⊕ Lakes / Ponds
- ~ US Highway
- ▭ Counties
- ~ State Highway

Research & Polling, Inc. distributes this map assuming no liability for any errors, omissions, or inaccuracies in the information provided regardless of the cause in reliance upon any maps.



RESEARCH & POLLING
INC.

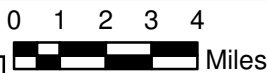
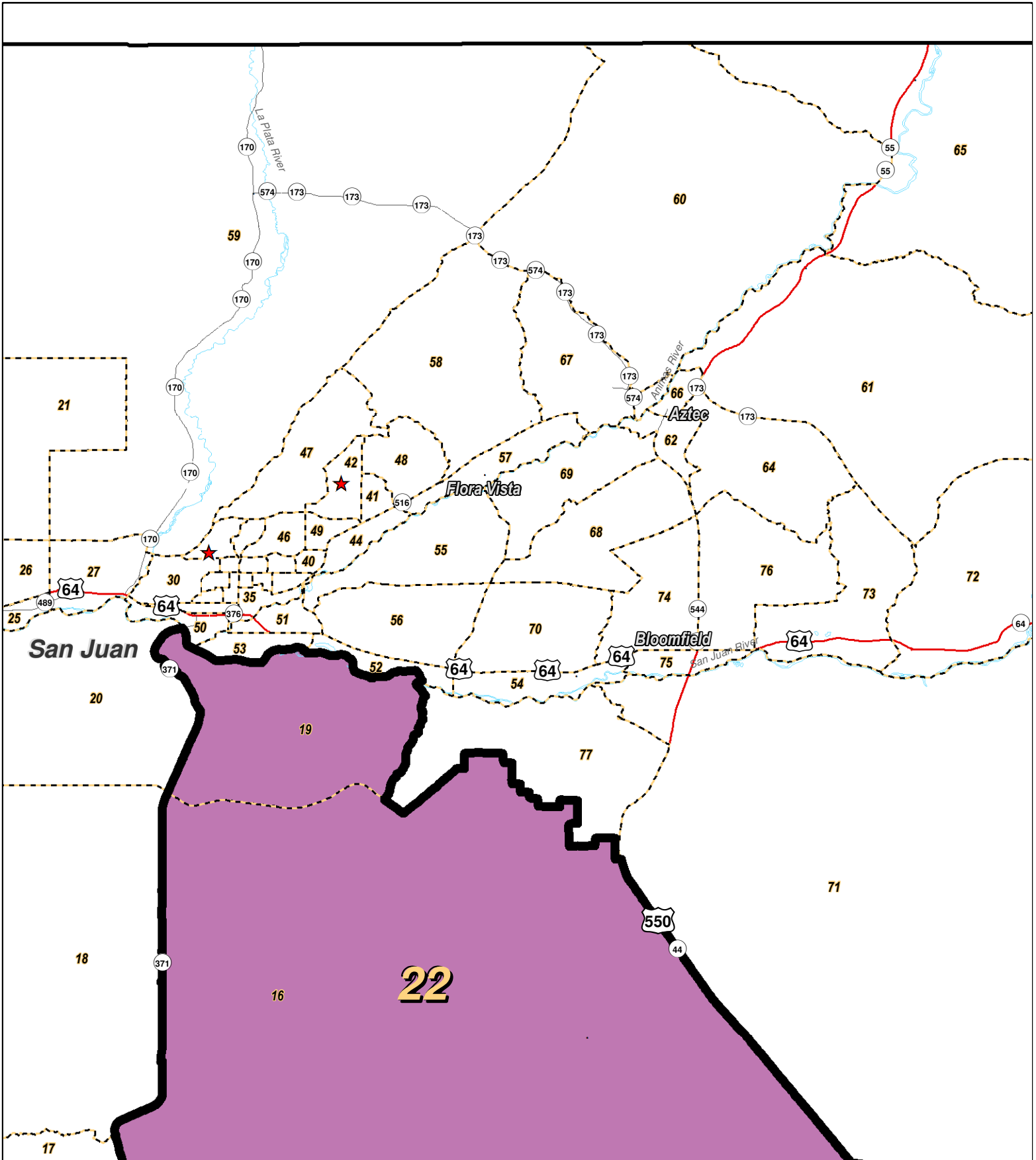
For the New Mexico
Legislative Council Service



LEGEND Created: September 05, 2011

★ Legislators	~ Rivers	↔ Interstate
□ Precincts	☪ Lakes / Ponds	↔ US Highway
□ Counties		↔ State Highway

Research & Polling, Inc. distributes this map assuming no liability for any errors, omissions, or inaccuracies in the information provided regardless of the cause in reliance upon any maps.



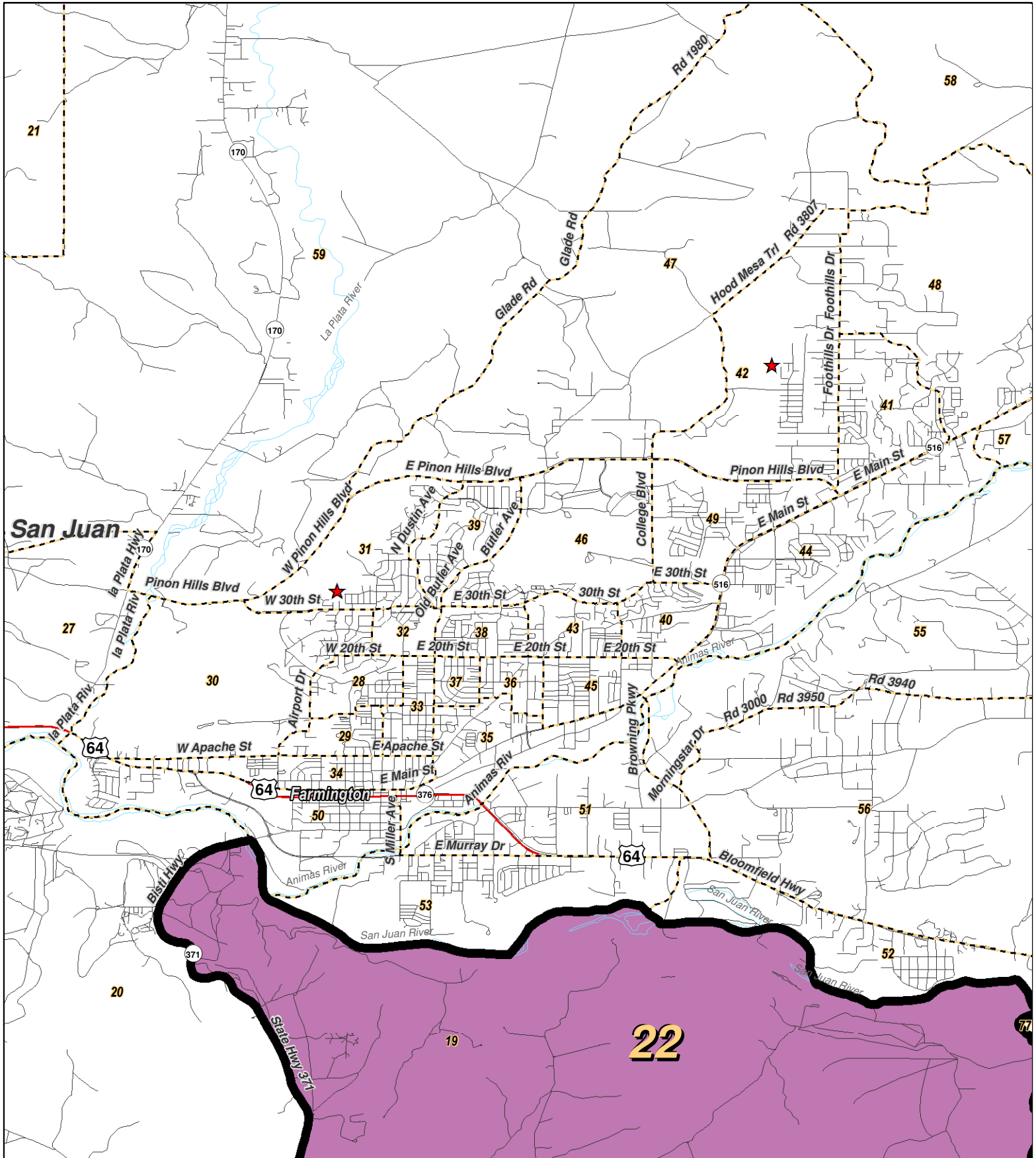
LEGEND Created: September 05, 2011

- ★ Legislators
- ~ Rivers
- ↗ Interstate
- ▭ Precincts
- ☪ Lakes / Ponds
- ↔ US Highway
- ▭ Counties
- ~ State Highway

Research & Polling, Inc. distributes this map assuming no liability for any errors, omissions, or inaccuracies in the information provided regardless of the cause in reliance upon any maps.



For the New Mexico
Legislative Council Service



0 1 2 Miles

RESEARCH & POLLING INC.

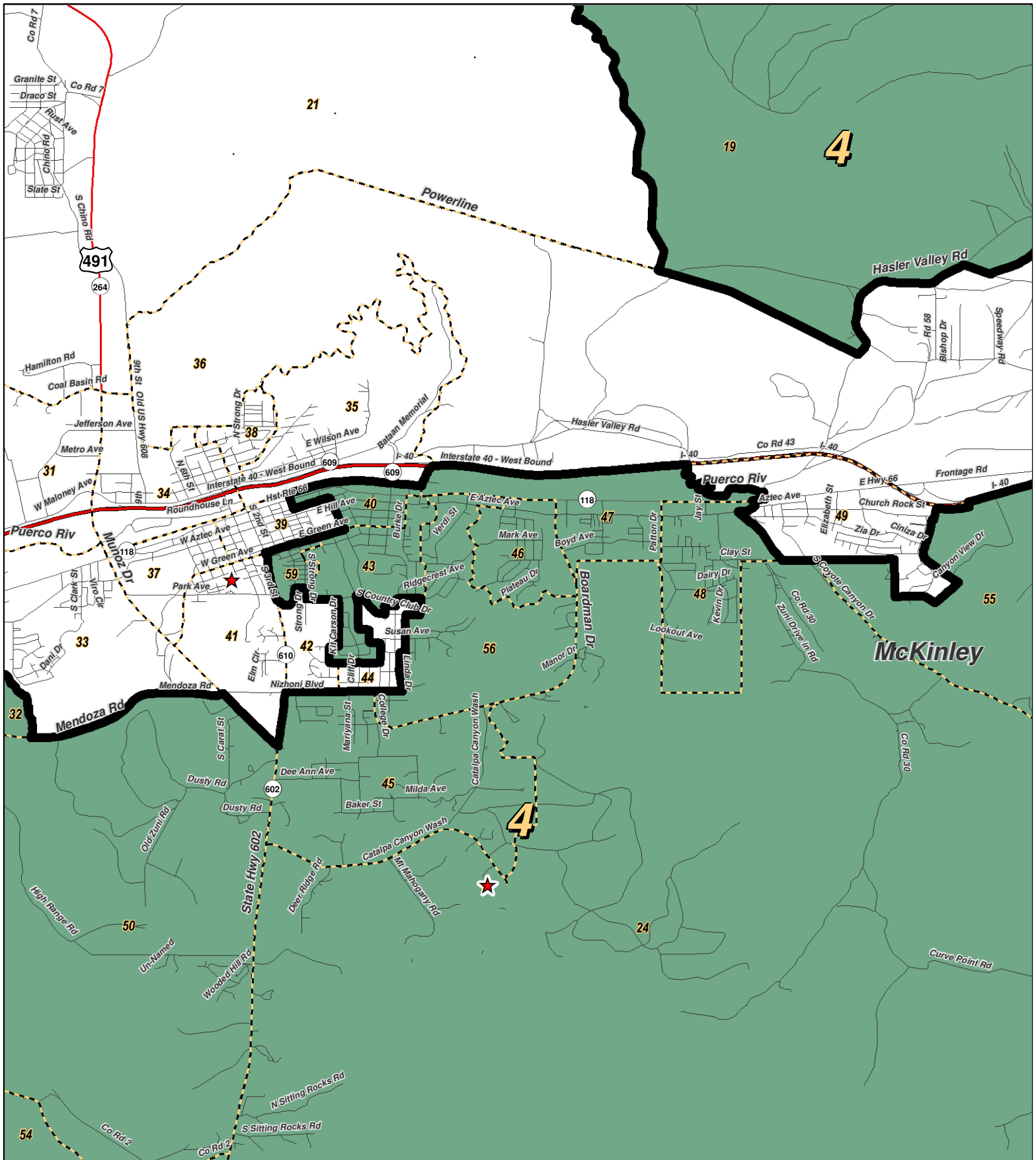
For the New Mexico Legislative Council Service



LEGEND Created: September 05, 2011

Legislators	Rivers	Interstate
Precincts	Lakes / Ponds	US Highway
Counties		State Highway

Research & Polling, Inc. distributes this map assuming no liability for any errors, omissions, or inaccuracies in the information provided regardless of the cause in reliance upon any maps.



0 1 Miles

RESEARCH & POLLING INC.

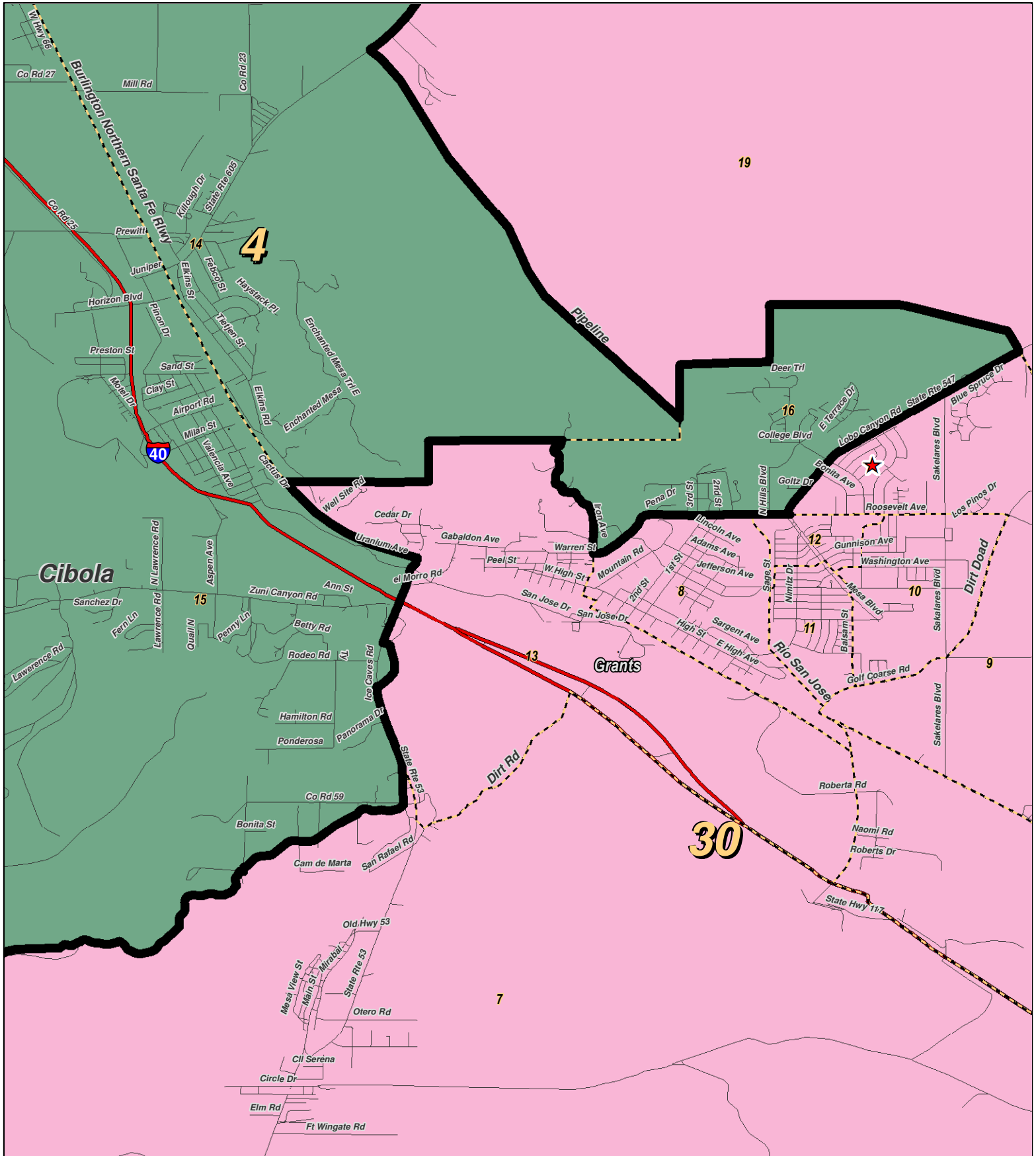
For the New Mexico Legislative Council Service



LEGEND Created: September 05, 2011

★ Legislators	~ Rivers	↗ Interstate
▭ Precincts	⊕ Lakes / Ponds	↔ US Highway
▭ Counties		~ State Highway

Research & Polling, Inc. distributes this map assuming no liability for any errors, omissions, or inaccuracies in the information provided regardless of the cause in reliance upon any maps.



RESEARCH & POLLING
INC.

For the New Mexico
Legislative Council Service

0 1 Miles

N

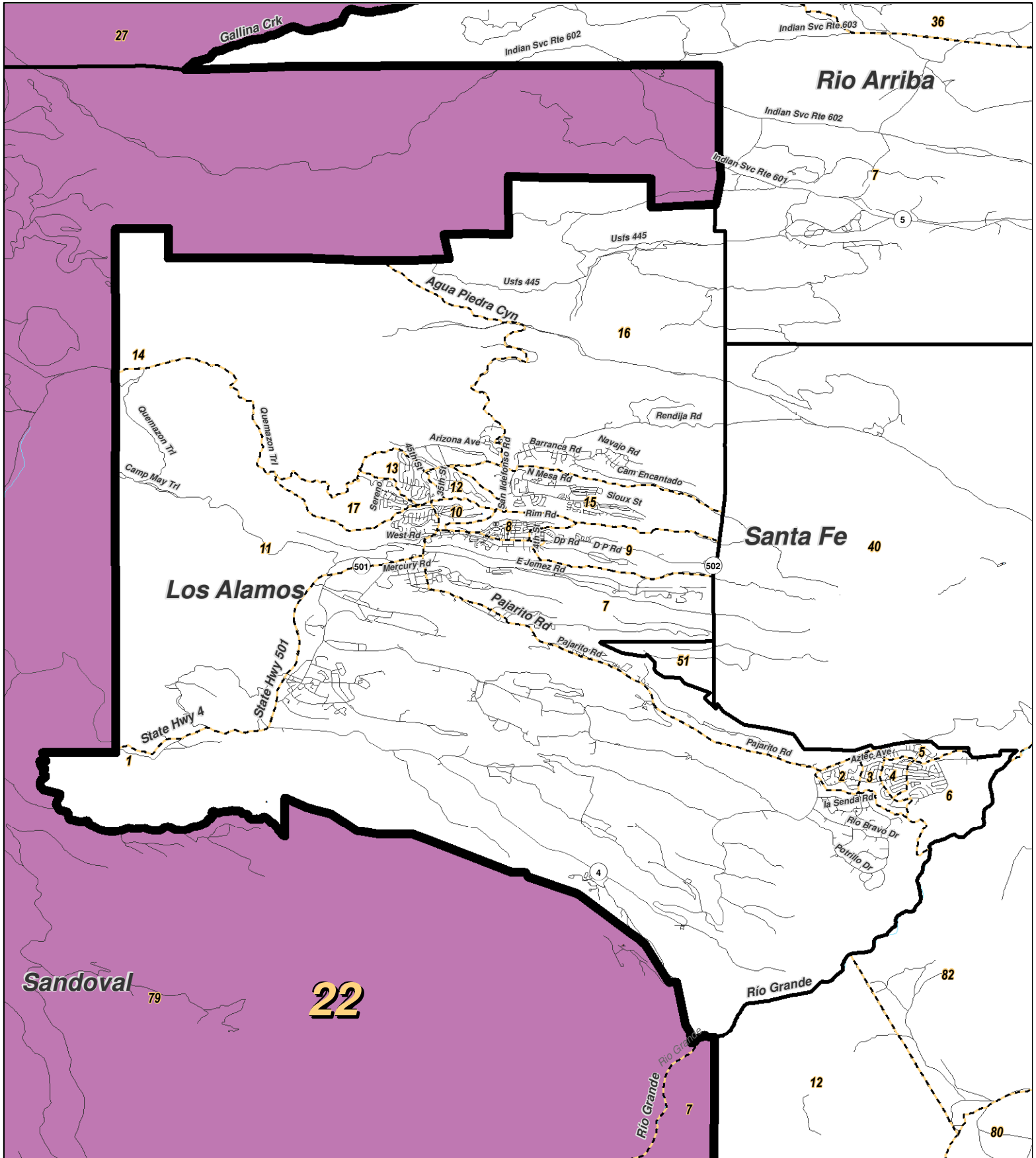


LEGEND

Created: September 05, 2011

- ★ Legislators
- Precincts
- Counties
- ~ Rivers
- ⊕ Lakes / Ponds
- ↗ Interstate
- US Highway
- - - State Highway

Research & Polling, Inc. distributes this map assuming no liability for any errors, omissions, or inaccuracies in the information provided regardless of the cause in reliance upon any maps.



0 1 2 3 Miles

RESEARCH & POLLING INC.

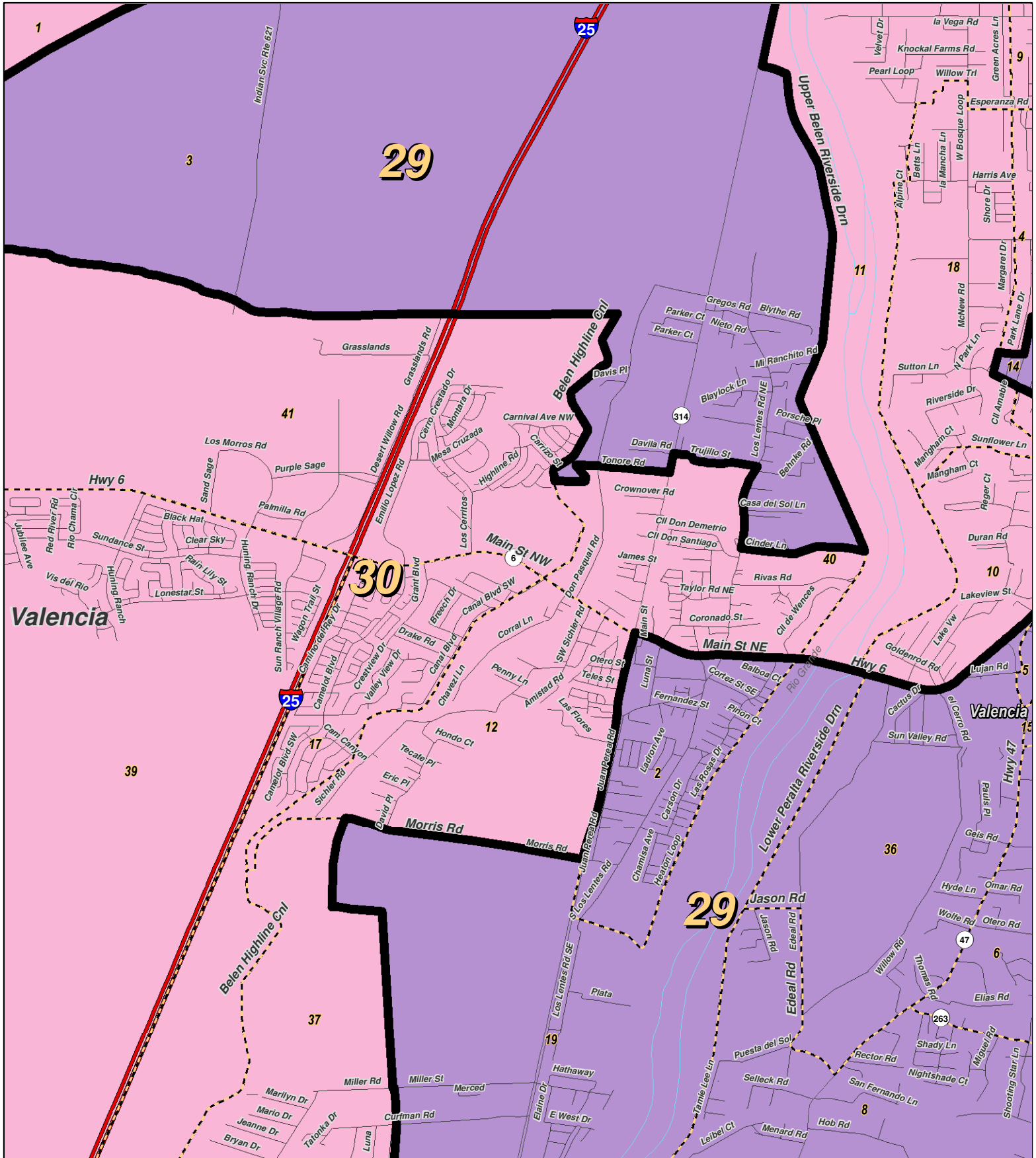
For the New Mexico Legislative Council Service



LEGEND Created: September 05, 2011

- ★ Legislators
- ~ Rivers
- ↔ Interstate
- Precincts
- ☪ Lakes / Ponds
- ↔ US Highway
- Counties
- ~ State Highway

Research & Polling, Inc. distributes this map assuming no liability for any errors, omissions, or inaccuracies in the information provided regardless of the cause in reliance upon any maps.



0 1 Miles

RESEARCH & POLLING INC.

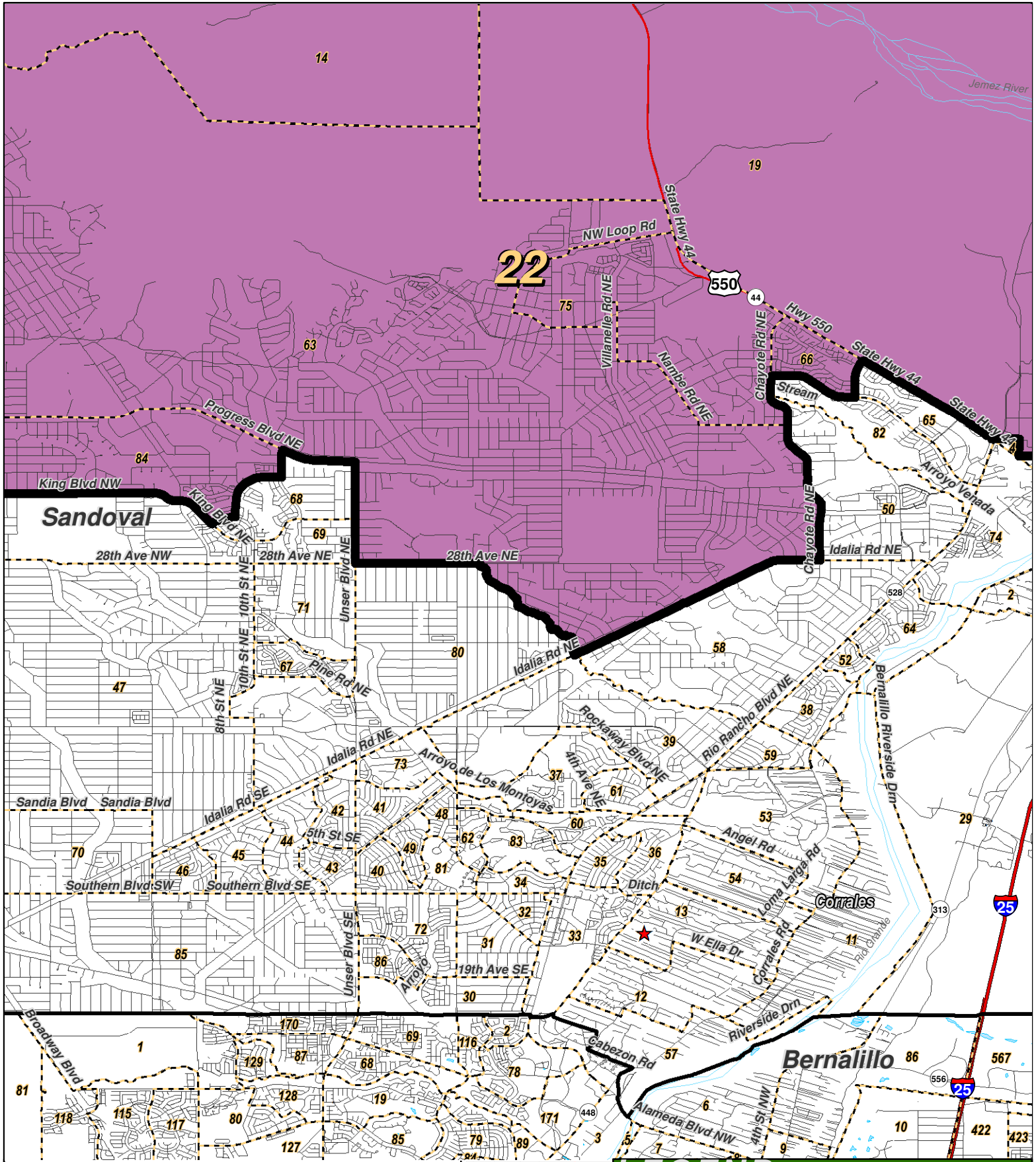
For the New Mexico Legislative Council Service



LEGEND Created: September 05, 2011

- ★ Legislators
- ▭ Precincts
- Counties
- ~ Rivers
- ☪ Lakes / Ponds
- ⚡ Interstate
- ⚡ US Highway
- ⚡ State Highway

Research & Polling, Inc. distributes this map assuming no liability for any errors, omissions, or inaccuracies in the information provided regardless of the cause in reliance upon any maps.



0 1 2 Miles

For the New Mexico Legislative Council Service



LEGEND Created: September 05, 2011

- ★ Legislators
- ▭ Precincts
- Counties
- ~ Rivers
- ☪ Lakes / Ponds
- ↗ Interstate
- ↘ US Highway
- ↖ State Highway

Research & Polling, Inc. distributes this map assuming no liability for any errors, omissions, or inaccuracies in the information provided regardless of the cause in reliance upon any maps.

District	Pop	Deviation	Hispanic	Non-Hispanic Origin				
				White	Native American	Black	Asian	Other Races
4	48,916	-112 -0.2%	7,380 15.1%	7,237 14.8%	32,773 67.0%	232 0.5%	367 0.8%	927 1.9%
18+	34,226		5,160 15.1%	6,110 17.9%	22,069 64.5%	174 0.5%	277 0.8%	436 1.3%
22	46,784	-2,244 -4.6%	7,607 16.3%	7,366 15.7%	30,628 65.5%	340 0.7%	221 0.5%	622 1.3%
18+	32,353		5,024 15.5%	5,767 17.8%	20,832 64.4%	255 0.8%	180 0.6%	295 0.9%
29	50,496	1,468 3.0%	30,545 60.5%	15,175 30.1%	3,624 7.2%	396 0.8%	158 0.3%	598 1.2%
18+	36,832		20,825 56.5%	12,516 34.0%	2,664 7.2%	305 0.8%	137 0.4%	385 1.0%
30	47,395	-1,633 -3.3%	19,422 41.0%	14,227 30.0%	12,379 26.1%	519 1.1%	250 0.5%	598 1.3%
18+	35,167		13,567 38.6%	11,931 33.9%	8,678 24.7%	439 1.2%	190 0.5%	362 1.0%
Totals	193,591	Ideal: 49,028	64,954 33.6%	44,005 22.7%	79,404 41.0%	1,487 0.8%	996 0.5%	2,745 1.3%
18+	138,578		44,576 32.2%	36,324 26.2%	54,243 39.1%	1,173 0.8%	784 0.6%	1,478 1.0%

District Profile

District	Total Population	Deviation		Total Adult Native American	Adult Hispanic	Adult Non-Hispanic			Performance Measure		Registered Voters				
						White	American	Black	Dem	Rep	Total	% Dem	% Rep	% DTS	% Other
4	48,916	-112	-0.2%	67.2%	15.1%	17.9%	64.5%	0.5%	67.0%	33.0%	24,788	63.5%	18.2%	16.5%	1.8%
22	46,784	-2,244	-4.6%	66.4%	15.5%	17.8%	64.4%	0.8%	69.7%	30.3%	24,701	64.9%	18.9%	14.0%	2.3%
29	50,496	1,468	3.0%	9.5%	56.5%	34.0%	7.2%	0.8%	53.2%	46.8%	24,422	51.9%	29.3%	15.8%	3.0%
30	47,395	-1,633	-3.3%	26.7%	38.6%	33.9%	24.7%	1.2%	54.0%	46.0%	25,731	55.8%	28.5%	12.6%	3.0%
NM	193,591	Ideal:	49,028	41.4%	32.2%	26.2%	39.1%	0.8%	60.6%	39.4%	99,642	59.0%	23.7%	14.7%	2.5%

NM Senate: SD_187888.1_Laguna

District Definitions by County and Precinct

SENATE DISTRICT FOUR.--Senate district four is composed of Cibola county precincts 4 through 6 and 14 through 16; and McKinley county precincts 1 through 4, 14, 16 through 19, 22 through 29, 32, 40, 43, 45 through 48, 50 and 52 through 59.

SENATE DISTRICT TWENTY-TWO.--Senate district twenty-two is composed of Bernalillo county precinct 31; McKinley county precincts 7 through 13 and 15; Rio Arriba county precincts 24 through 27, 29 and 30; San Juan county precincts 14 through 16 and 19; and Sandoval county precincts 7 through 10, 14 through 27, 63, 66, 75, 78, 79 and 84.

SENATE DISTRICT TWENTY-NINE.--Senate district twenty-nine is composed of Bernalillo county precinct 93; and Valencia county precincts 2, 3, 5 through 8, 13 through 16, 19, 21 through 28, 31, 32, 35 and 36.

SENATE DISTRICT THIRTY.--Senate district thirty is composed of Cibola county precincts 1 through 3, 7 through 13 and 17 through 25; McKinley county precinct 30; Socorro county precincts 15 and 24; and Valencia county precincts 1, 4, 9 through 12, 17, 18, 20, 29, 33, 34, 37 and 39 through 41.