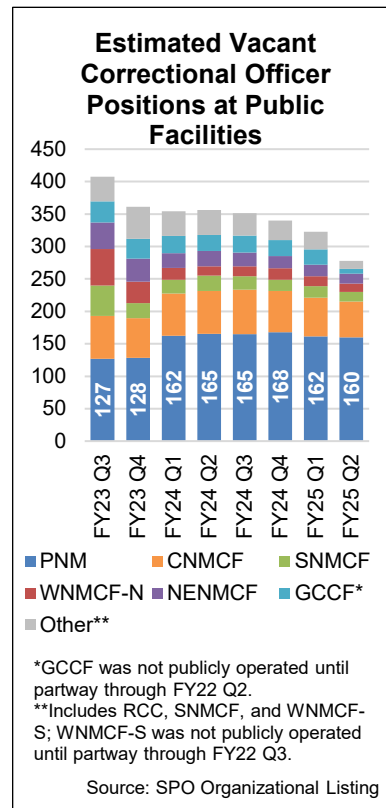
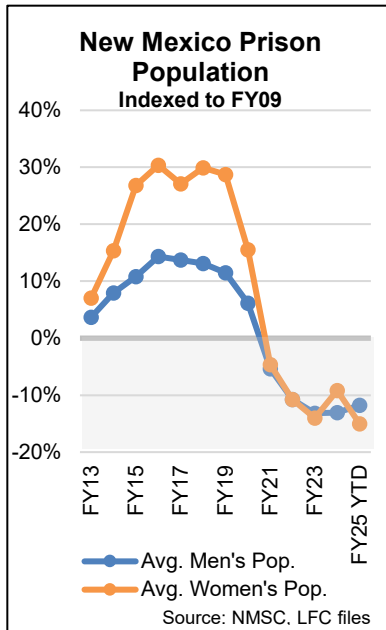


ACTION PLAN

Submitted by agency?	Yes
Timeline assigned?	Yes
Responsibility assigned?	Yes



The Corrections Department (NMCD) made progress toward several of its performance targets in FY25. The agency successfully reduced vacancy rates and turnover among correctional officers at public facilities and saw a decrease in recidivism for participants in treatment programs, even as participation rates increased. The agency continued the trend of improving the percentage of people in prison participating in education programming. NMCD reduced vacancy rates among probation and parole officers, resulting in a decline in the average number of cases per officer. Prison populations appear to be leveling off after several years of consistent decline.

Inmate Management and Control

The state's inmate population has declined since 2018, dropping by more than 23 percent between FY19 and FY25. Recent increases in admissions for new offenses suggest the population is likely to stabilize in the near future. The New Mexico Sentencing Commission's September 2024 prison population projection estimated that total prison populations would average 5,864 over FY25; however, actual data show average populations of approximately 5,618, a 0.7 percent increase from FY24. This increase was primarily due to a 1.5 percent increase in the men's population between July 2024 and December 2024. Women's prison populations were projected to fall an average of 2.3 percent between FY24 and FY25, but the commission anticipates that women's prison populations will continue to rise during FY25 as more individuals are charged in the 2nd Judicial District and these cases resolve.

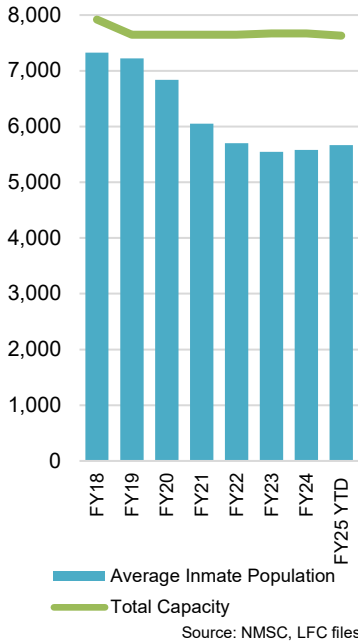
Staffing. Low populations enabled NMCD to adjust facility occupancy to align with staffing levels despite high vacancy rates. However, this has not been possible at all facilities. About 25.3 percent of the agency's total positions were unfilled as of December 2024, and public correctional officer vacancies declined by approximately two percent to 26.7 percent, while private correctional officer vacancies rose to 37 percent. Vacancy rates have declined notably at several facilities, with vacancies at the Southern New Mexico Correctional Facility decreasing by 4 percent between July 2024 and December 2024, and vacancy rates at the Roswell Correctional Center decreasing by 3 percent during the same period. The most notable reduction occurred at the Northeast New Mexico Correctional Facility, with a 7 percent decrease in vacancies since July 2024.

Budget: \$282,250.3	FTE: 1,857	FY23 Actual	FY24 Actual	FY25 Target	FY25 Q1	FY25 Q2	Rating
Staffing							
Vacancy rate of correctional officers in public facilities.		32.2%	29.7%	25%	28.5%	26.7%	Y
Vacancy rate of correctional officers in private facilities		33.8%	31.9%	25%	33.8%	37%	R
In-House Parole							
Average number of male inmates on in-house parole		59.6	39.2	65	46	43	G
Average number of female inmates on in-house parole		3.9	1.9	10	2.7	2	G
Prison Violence							
Number of inmate-on-inmate assaults resulting in injury requiring off-site medical treatment		7	13	10	1	2	G

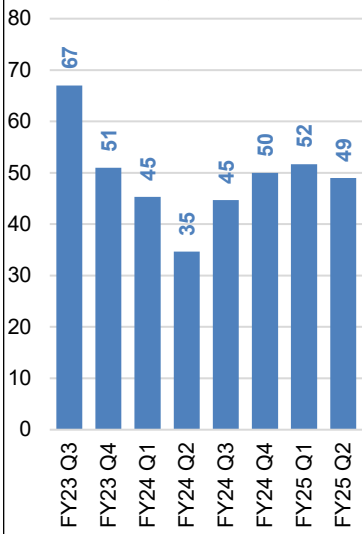
PERFORMANCE REPORT CARD

Corrections Department Second Quarter, Fiscal Year 2025

NMCD Population and Facility Capacity



Estimated Number of Release-Eligible Inmates Incarcerated Past Release Date by Quarter



Budget: \$282,250.3 **FTE:** 1,857

Number of inmate-on-staff assaults resulting in injury requiring off-site medical treatment

FY23 Actual	FY24 Actual	FY25 Target	FY25 Q1	FY25 Q2	Rating
4	2	4	1	0	G

Health

Percent of random monthly drug tests administered to at least 10 percent of the inmate population that test positive for drug use*

1.4%	2.1%	N/A	2.7%	1.5%
------	------	-----	------	------

Percent of standard healthcare requirements met by medical contract vendor

99%	98%	98%	90%	96%	Y
-----	-----	-----	-----	-----	---

Program Rating

Y	Y	Y	Y
---	---	---	---

*Measure is classified as explanatory and does not have a target.

Reentry

Recidivism. The three-year recidivism rate of offenders released from NMCD's custody increased from 36 percent in FY23 to an average of approximately 40 percent in FY24. It continued to rise to start FY25, reaching 42 percent in Q1 before dropping to 38 percent in Q2. Recidivism due to new offenses increased from 17 percent in FY23 to 18 percent in FY24 and dropped to an average of 16.6 percent in the first two quarters of FY25. Recidivism rates during FY23-FY26 are expected to reflect lower recovery center populations due to Covid-19, potentially leading to higher recidivism numbers. However, recovery center populations are gradually increasing, with both the women's and men's recovery centers nearing capacity. The number of individuals enrolled in these programs began to rise following the resumption of normal court operations and the lifting of Covid-19 restrictions. NMCD is also making strides in the number of eligible inmates incarcerated past their release date, showing a steady reduction in the number of individuals housed past their release date from a peak in FY23.

Programming. One of the highlights of FY24 for NMCD was its success in maintaining the number of eligible students who completed adult basic education, as well as the record number of students (236) who earned their high school equivalency credential. The agency remained committed to increasing the availability of these programs in its facilities, and the results indicate that these efforts have been largely successful. Despite a slow start to FY25, the agency is now on track to meet its target before the end of the year.

NMCD focuses on providing evidence- and research-based programs for all individuals in its custody. However, a 2024 study of the inmate classification system used by NMCD cited evidence of over-classification of some inmates based on the availability of medical and behavioral health services at certain facilities. LFC previously raised concerns about completion rates among participants in certain evidence-based programs, which can be affected by the unavailability of programming and services at some facilities. NMCD recently reported adjusting its classification policy based on recommendations from this study; these changes are expected to enable more appropriate placement of certain inmates.

Budget: \$22,970.2 **FTE:** 130

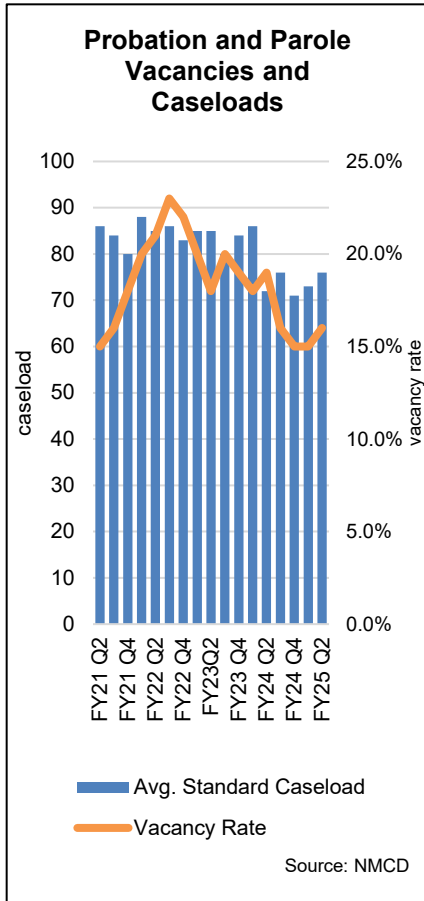
Recidivism

Prisoners reincarcerated within 36 months

FY23 Actual	FY24 Actual	FY25 Target	FY25 Q1	FY25 Q2	Rating
36%	40%	40%	42%	38%	G

PERFORMANCE REPORT CARD

Corrections Department Second Quarter, Fiscal Year 2025



Prisoners reincarcerated within 36 months due to new charges or pending charges	17%	18%	17%	18%	14.7%	G
Prisoners reincarcerated within 36 months due to technical parole violations	19%	21%	20%	8%	8%	G
Percent of sex offenders reincarcerated on a new sex offense conviction within 36 months of release on the previous sex offense conviction	4%	3%	5%	0%	0%	G
Percent of residential drug abuse program who are reincarcerated within 36 months of release*	19%	26%	N/A	35%	20%	
Graduates from the men's recovery center who are reincarcerated within 36 months*	17%	19%	20%	31%	22%	Y
Graduates from the women's recovery center who are reincarcerated within 36 months*	11%	23%	20%	23%	25%	Y
Education						
Percent of eligible inmates enrolled in educational, cognitive, vocational, and college programs	51%	68%	60%	46%	60%	G
Percent of participating students who have completed adult basic education*	15%	75%	N/A	60%	72%	
Number of students who earn a high school equivalency credential	184	236	165	33	79	G
Percent of eligible students who earn a high school equivalency credential	15%	75%	80%	60%	72%	Y
Program Rating	G	Y		Y		Y

*Measure is classified as explanatory and does not have a target.

Community Offender Management

Vacancy rates among probation and parole officers rose to 16 percent in the second quarter of FY25 but were still down from 19 percent in FY23. The average caseload per officer increased slightly from 73 to 76. NMCD reports that 32 percent of absconders were apprehended in the second quarter of FY25, representing a 5 percent improvement from the previous year. Research suggests offenders with unstable employment or housing and those struggling with substance use disorder are more likely to abscond.

Budget: \$40,871.5 FTE: 359	FY23 Actual	FY24 Actual	FY25 Target	FY25 Q1	FY25 Q2	Rating
Average standard caseload per probation and parole officer	83	76	88	73	76	G
Vacancy rate of probation and parole officers	19%	17%	18%	15%	16%	G
Percent of absconders apprehended	24.9%	27%	30%	33%	32%	G
Program Rating	Y	Y		G		G