

Cloudcroft High School: Graduation Rates

RECEIVED
AUGUST 16 2016
LESC

- Cloudcroft Municipal Schools serves the students of Cloudcroft, Mayhill, Weed, Timberon and Pinon. Our current enrollment is 322 students K- 12. Our school district covers approximately 850 sq. miles.

Cloudcroft Municipal Schools

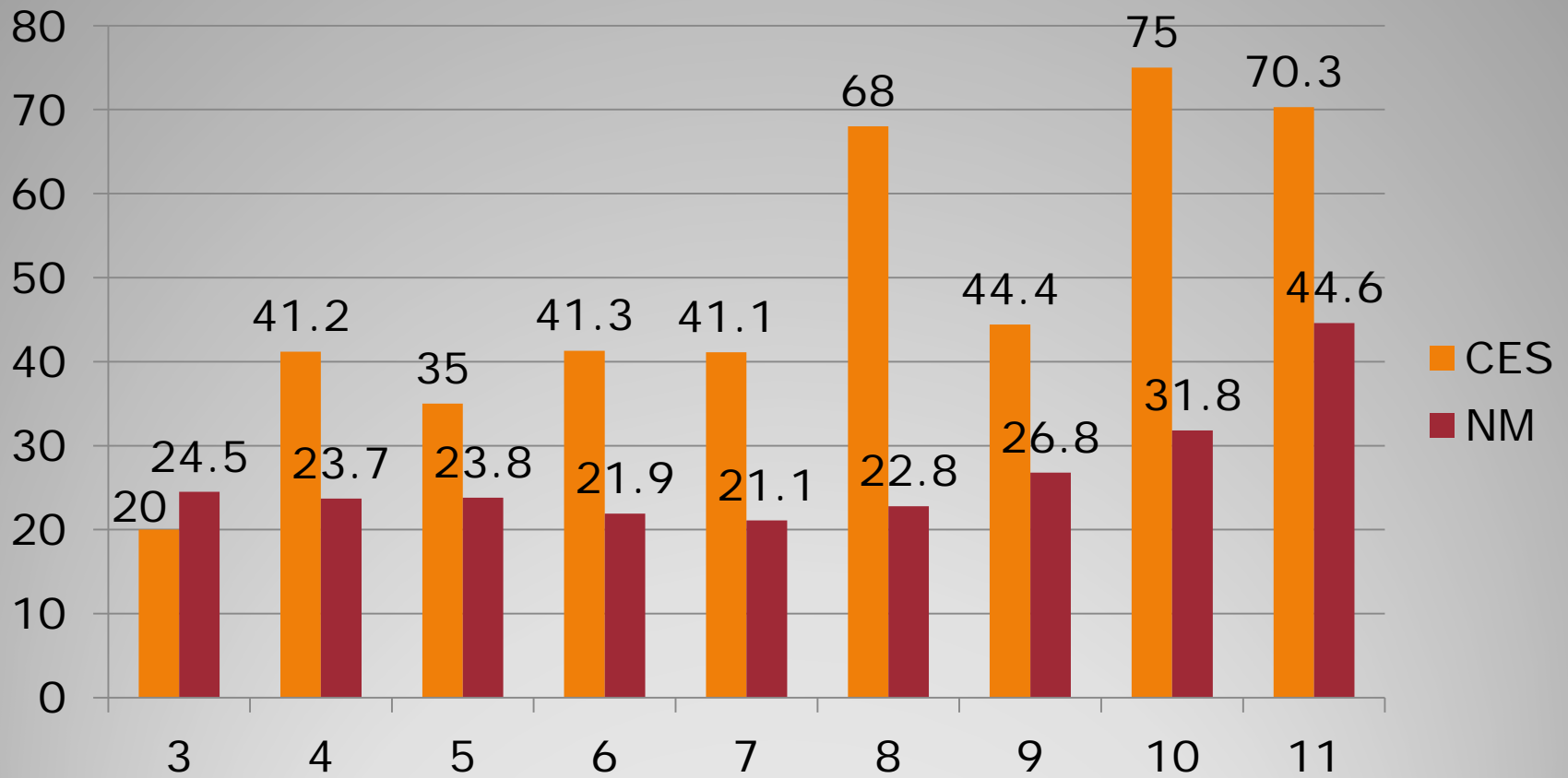
Table 1: Five Year Trends - Average ACT Scores

Grad Year	Total Tested		English		Mathematics		Reading		Science		Composite	
	District	State	District	State	District	State	District	State	District	State	District	State
2012	37	13,792	20.0	19.0	18.6	19.6	22.0	20.3	20.4	20.0	20.3	19.9
2013	20	13,423	20.9	19.0	20.0	19.7	23.9	20.4	22.0	20.1	21.8	19.9
2014	25	12,945	20.9	18.9	20.6	19.7	22.3	20.5	21.4	20.1	21.4	19.9
2015	28	13,393	20.2	19.1	19.8	19.8	21.9	20.6	21.3	20.3	21.0	20.1
2016	18	13,435	21.4	18.9	21.0	19.5	22.3	20.5	21.0	20.1	21.6	19.9

ACT Results: 5 year average

- Class of 2016 had 25 members
- 19 of the 25 graduated with college credit or 76%
- 3 of the 19 were CTE pathways while 16 were college pathways
- Current funding provides for about 1/3 of the expense (\$3,800 provided, actual cost approximately \$12,000)
- 2 of these students earned their associates degree prior to graduating from CHS.

Dual Credit Program



**CMS VS. NM: PARCC ELA from
2014-15**

- K-12 Math Curriculum
 - Improve vertical alignment of curriculum and ensure mastery of core standards
- Facilities
 - Cloudcroft High School veneer walls, HVAC system, and electrical backbone
 - Cloudcroft Elementary school roof and building upgrades

Opportunities for Improvement