

Alamogordo Public Schools
1211 Hawaii Ave.
Alamogordo, NM 88310
575-812-6000

Adrienne Salas
Superintendent
575-812-6000
Adrienne.salas@aps4kids.org

Michelle Korbakes
Exec. Dir. of Learning Services
575-812-6064
Michelle.korbakes@aps4kids.org

Carol Genest
Dir. of Business and Finance
575-812-6040
Carol.genest@aps4kids.org

Vance Lee
Exec. Dir. of Support Services
575-812-6015
Vance.lee@aps4kids.org

Michelle Perry
Director of Curriculum
575-812-6035
Michelle.perry@aps4kids.org

TEACHER QUALITY
2015-2016

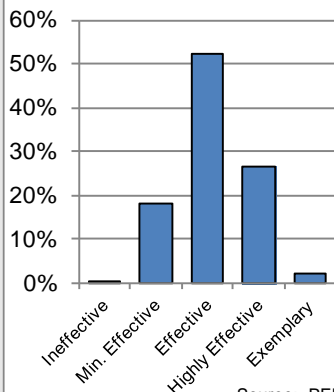
Total number of teachers:
 ➤ 365

Percent of teachers where highest degree reported is a Bachelor's (2011-2012):
 ➤ 69% (253)

Percent of teachers where highest degree reported is a Master's or higher (2011-2012):
 ➤ 30% (108)

Percent of teachers teaching with emergency or provisional credentials:
 ➤ 1% (3)

Percent of Teachers at Each Effectiveness Rating FY15



Alamogordo Public Schools								
Title I, School Grade Report, and Weighted Facility Condition Index								
School	Title I	School Grade					School Condition (FY17)	
		FY11	FY12	FY13	FY14	FY15	wNMCI*	PSFA Rank**
ELEMENTARY								
Buena Vista Elementary	Y	A	C	B	B	B	23.5%	210
Heights Elementary	Y	F	F	D	B	C	34.6%	In Progress
High Rolls Mtn. Elementary	Y	C	B	B	B	A	60.7%	2
Holloman Primary	Y	C	B	B	C	A	57.3%	5
La Luz Elementary	Y	C	D	D	B	C	26.0%	158
North Elementary	Y	D	C	D	C	C	26.6%	148
Oregon Elementary	Y	B	D	D	C	C	47.8%	In Progress
Sacramento Elem. (Desert Star in 2016)	Y	F	F	F	D	C	0.0%	715
Sierra Elementary	Y	B	C	C	C	B	23.2%	218
Yucca Elementary	Y	C	D	C	B	B	4.7%	636
MIDDLE								
Chaparral Middle	N	C	B	B	B	C	33.6%	58
Holloman Intermediate	N	C	B	A	B	A	16.0%	370
Mountain View Middle	N	D	B	A	C	B	8.8%	532
HIGH								
Academy Del Sol Alternative (10-12)	N	C	D	B	B	F	22.4%	233
Alamogordo High School	N	B	C	A	A	D	21.8%	240

*Statewide average wNMCI: 19 percent.

Sources: PED and PSFA

**Ranks closer to 1 indicate a higher priority for PSCOC standards-based award.

Data on District Land Valuation and Levies	
Residential Valuation	\$523,125,281
Non-Residential Valuation	\$221,883,105
2013 Oil & Gas, 2014 Copper	\$0
Total Valuation	\$745,008,386
Total Residential Mills Outstanding	8.335
Total Non-Residential Mills Outstanding	8.572
Total Copper, Oil & Gas Mills Outstanding	0.000
Total Bond Capacity	\$44,639,367
Bonds Outstanding on 12/31/15	\$31,415,000
Total Indebtedness	70.4%
Assessed Valuation Per MEM	\$128,175

Source: PED (As of 12/31/2015)

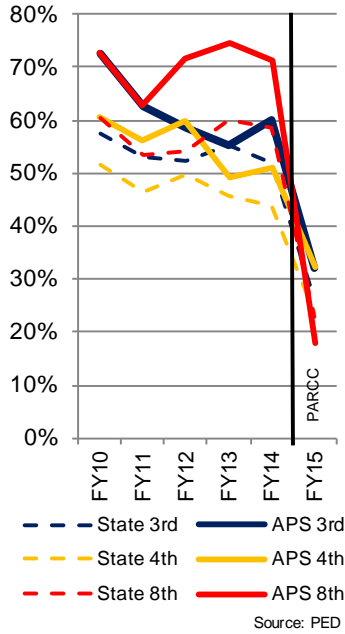
Data on School SEG Expenditures	2014-2015 Expenditure			2015-2016 Budgeted		
	APS		Statewide	APS		Statewide
	Expenditure	Percent	Percent	Expenditure	Percent	Percent
Direct Instruction	\$24,611,840	60.4%	61.9%	\$26,191,581	60.0%	60.7%
Instructional Support Services	\$16,163,287	39.6%	37.9%	\$17,384,883	39.8%	38.8%
Students	\$4,081,224	10.0%	9.7%	\$4,227,297	9.7%	9.6%
Instruction	\$900,059	2.2%	2.8%	\$877,789	2.0%	2.7%
General Administration	\$782,912	1.9%	2.0%	\$733,830	1.7%	2.0%
School Administration	\$2,412,810	5.9%	6.8%	\$2,809,458	6.4%	6.4%
Central Services	\$2,148,943	5.3%	3.4%	\$2,150,964	4.9%	3.4%
Operations & Maintenance	\$5,686,521	13.9%	12.9%	\$6,344,986	14.5%	13.3%
Student Transportation	\$0	0.0%	0.2%	\$0	0.0%	0.2%
Other Support Services	\$150,818	0.0%	0.2%	\$240,559	0.6%	1.2%
Non-Instructional Support	\$0	0.0%	0.2%	\$0	0.0%	0.2%
Food Service	\$0	0.0%	0.1%	\$0	0.0%	0.1%
Community Service	\$0	0.0%	0.1%	\$0	0.0%	0.1%
Capital Outlay	\$0	0.0%	0.1%	\$89,197	0.2%	0.3%
Total Expenditures	\$40,775,127			\$43,665,661		

*Includes General Fund Only

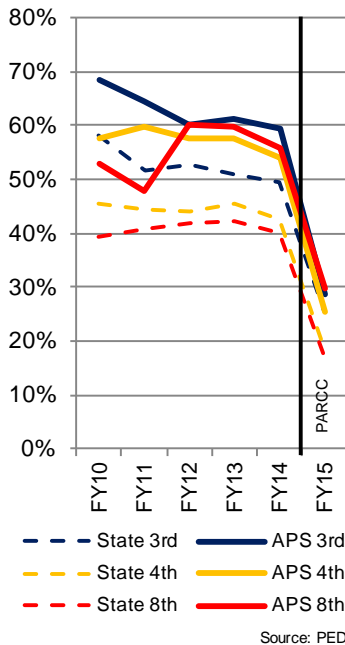
Source: PED Stat Book

DISTRICT ACCOUNTABILITY RESULTS

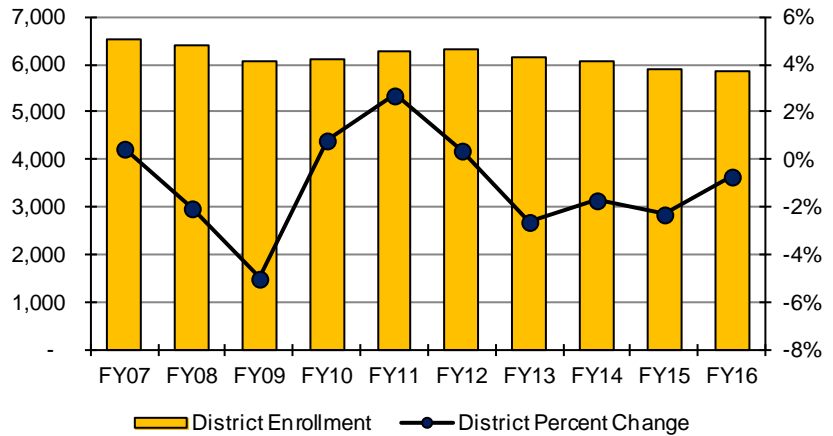
Reading Proficiency History (FY15 is PARCC Data)



Math Proficiency History (FY15 is PARCC Data)



Enrollment Data with Annual Percentage Change



2015-2016 Student Demographics

	Alamogordo Public Schools		Statewide	
	#	%	#	%
Female	2,819	48.1%	165,360	48.8%
Male	3,041	51.9%	173,158	51.2%
Caucasian	2,850	48.6%	83,179	24.6%
African American	529	9.0%	7,299	2.2%
Hispanic	2,199	37.5%	207,381	61.3%
Asian/Pacific Islander	188	3.2%	4,843	1.4%
Native American	94	1.6%	35,816	10.6%
Multiracial	0	0.0%	11	<0.1%
English Learners	105	1.8%	48,076	14.2%
Students with Disabilities	952	16.2%	49,259	14.6%
Free/Reduced Lunch	3,465	59.1%	235,861	69.7%
Migrant	0	0.0%	322	0.1%

Source: PED

4-Year Cohort Graduation Rates - APS vs. Statewide

