

Cloudcroft Municipal Schools
10 Swallow Pl.
Cloudcroft, NM 88317
575-601-4416

Travis Dempsey
Superintendent
575-601-4416 e.177
travis.dempsey@cmsbears.org

Charlotte Dees
Business Manager
575-601-4416 e.161
charlotte.dees@cmsbears.org

Jim O'Connor
Operations Director
575-601-4416 e.168
jim.oconnor@cmsbears.org

Joel Ferguson
Technology Coordinator
575-601-4416 e.166
joel.ferguson@cmsbears.org

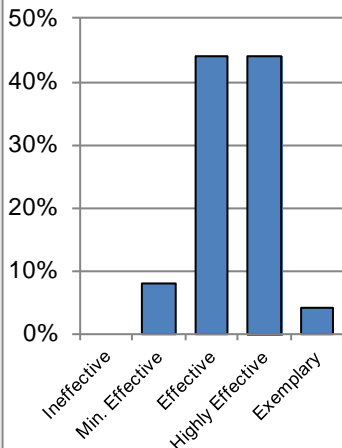
TEACHER QUALITY
2015-2016

Total number of teachers:
 ➤ 27

Percent of teachers where highest degree reported is a Bachelor's (2011-2012):
 ➤ 44% (12)

Percent of teachers where highest degree reported is a Master's or higher (2011-2012):
 ➤ 56% (15)

Percent of Teachers at Each Effectiveness Rating FY15



Source: PED

Cloudcroft Municipal Schools								
Title I, School Grade Report, and Weighted Facility Condition Index								
School	Title I	School Grade					School Condition (FY17)	
		FY11	FY12	FY13	FY14	FY15	wNMCI*	PSFA Rank**
ELEMENTARY								
Cloudcroft Elementary	Y	C	D	C	B	D	19.8%	322
MIDDLE								
Cloudcroft Middle	N	B	A	B	C	A	19.8%	322
HIGH								
Cloudcroft High	N	B	C	A	A	A	10.0%	519

*Statewide average wNMCI: 19 percent.

Sources: PED and PSFA

**Ranks closer to 1 indicate a higher priority for PSCOC standards-based award.

Data on District Land Valuation and Levies	
Residential Valuation	\$124,884,909
Non-Residential Valuation	\$51,272,352
2013 Oil & Gas, 2014 Copper	\$0
Total Valuation	\$176,157,261
Total Residential Mills Outstanding	7.747
Total Non-Residential Mills Outstanding	8.028
Total Copper, Oil & Gas Mills Outstanding	0.000
Total Bond Capacity	\$10,560,100
Bonds Outstanding on 12/31/15	\$6,635,000
Total Indebtedness	62.8%
Assessed Valuation Per MEM	\$526,163

Source: PED (As of 12/31/2015)

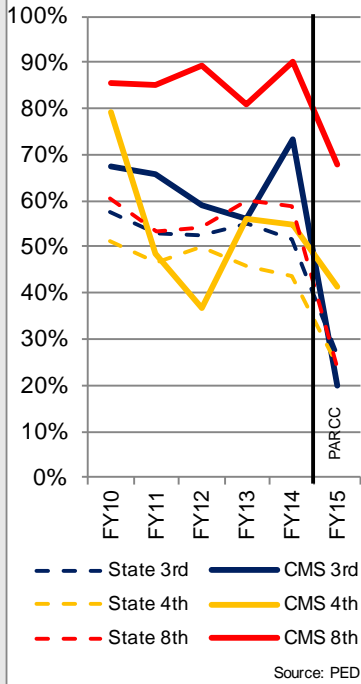
Data on School SEG Expenditures	2014-2015 Expenditure			2015-2016 Budgeted		
	CMS		Statewide	CMS		Statewide
	Expenditure	Percent	Percent	Expenditure	Percent	Percent
Direct Instruction	\$1,864,649	52.4%	61.9%	\$2,135,713	46.5%	60.7%
Instructional Support Services	\$1,635,712	45.9%	37.9%	\$1,887,127	41.1%	38.8%
Students	\$311,799	8.8%	9.7%	\$388,371	8.5%	9.6%
Instruction	\$103,840	2.9%	2.8%	\$97,134	2.1%	2.7%
General Administration	\$275,853	7.7%	2.0%	\$298,516	6.5%	2.0%
School Administration	\$269,311	7.6%	6.8%	\$276,562	6.0%	6.4%
Central Services	\$140,472	3.9%	3.4%	\$148,935	3.2%	3.4%
Operations & Maintenance	\$534,437	15.0%	12.9%	\$669,081	14.6%	13.3%
Student Transportation	\$0	0.0%	0.2%	\$0	0.0%	0.2%
Other Support Services	\$0	0.0%	0.2%	\$8,528	0.2%	1.2%
Non-Instructional Support	\$59,605	1.7%	0.2%	\$69,500	1.5%	0.2%
Food Service	\$59,605	1.7%	0.1%	\$69,500	1.5%	0.1%
Community Service	\$0	0.0%	0.1%	\$0	0.0%	0.1%
Capital Outlay	\$0	0.0%	0.1%	\$500,000	10.9%	0.3%
Total Expenditures	\$3,559,966			\$4,592,340		

*Includes General Fund Only

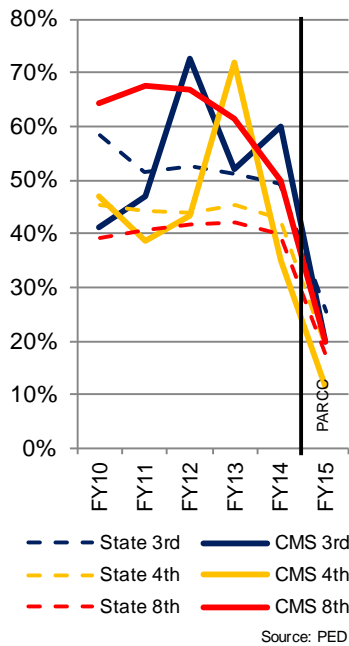
Source: PED Stat Book

DISTRICT ACCOUNTABILITY RESULTS

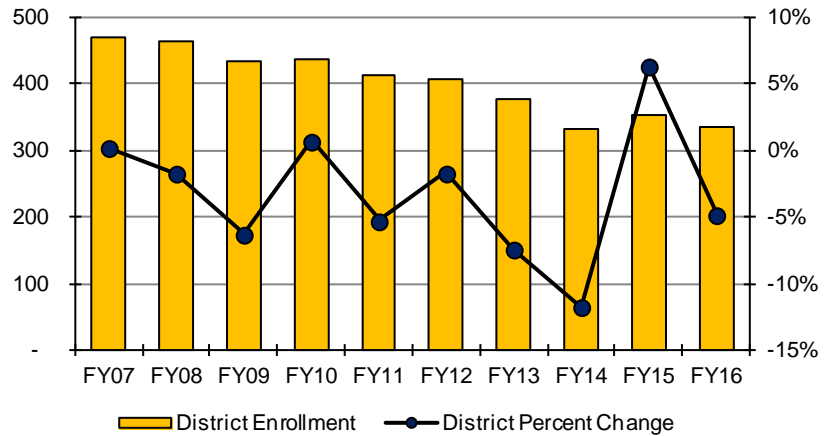
Reading Proficiency History (FY15 is PARCC Data)



Math Proficiency History (FY15 is PARCC Data)



Enrollment Data with Annual Percentage Change



2015-2016 Student Demographics

	Cloudcroft Municipal Schools		Statewide	
	#	%	#	%
Female	159	47.3%	165,360	48.8%
Male	177	52.7%	173,158	51.2%
Caucasian	251	74.7%	83,179	24.6%
African American	4	1.2%	7,299	2.2%
Hispanic	67	19.9%	207,381	61.3%
Asian/Pacific Islander	9	2.7%	4,843	1.4%
Native American	5	1.5%	35,816	10.6%
Multiracial	0	0.0%	11	<0.1%
English Language Learners	0	0.0%	48,076	14.2%
Students with Disabilities	37	11.0%	49,259	14.6%
Free/Reduced Lunch	122	36.3%	235,861	69.7%
Migrant	0	0.0%	322	0.1%

Source: PED

4-Year Cohort Graduation Rates - CMS vs. Statewide

