

Academy for Technology and the Classics
74 A Van Nu Po Road
Santa Fe, NM 87508
(505) 473-4282

Susan Lumley
Principal
(505) 438-4054
Susan.lumley@atcschool.org

Jason Morgan
Assistant Principal
(505) 438-4053
Jason.morgan@atcschool.org

Abbie Casias
Academic Dean
(505) 438-4057
Abbie.casias@atcschool.org

Pam Swiderski
School Business Manager
(505)473-4282
Pam.swiderski@atcschool.org

Jennifer Cintas
Office Manager
(505) 438-4050
Jennifer.cintas@atcschool.org

ATC Quick Overview	
Year Opened	2000
Grades Served	7 - 12
Charter Type	District
Within District	Santa Fe
N. of Teachers	22
FY16 Enrollment	364
S. - T. Ratio	15.5 : 1

Source: PED and ATC

Academy for Technology and the Classics (ATC)								
Title I, School Grade Report, and Weighted Facility Condition Index								
School	Title I	School Grade					School Condition (FY17)	
		FY12	FY13	FY14	FY15	FY16	wNMCI*	PSFA Rank**
Academy for Tech. and the Classics	N	B	A	A	A	A	3.4%	667

*Statewide average wNMCI: 19 percent.

Sources: PED and PSFA

**Ranks closer to 1 indicate a higher priority for PSCOC standards-based award.

FY16 Grade Breakdown	ATC	State "C" Benchmark*	Max Points
Current Standing	20.7	12.5	30.0
School Growth	6.8	5.8	10.0
Student Growth (High Performers)	8.0	3.6	10.0
Student Growth (Low Performers)	7.5	7.7	10.0
Opportunity to Learn	7.2	6.0	8.0
Graduation	11.8	12.8	17.0
College and Career Readiness	11.0	9.0	15.0
Total Points	73.0	57.4	100.0
Bonus Points	4.5	1.6	5.0
Total with Bonus Points	77.5	59.0	105.0

*The Statewide "C" benchmark was fixed in 2011 and is not recalculated year-to-year

Source: PED

Capital Revenue Sources					
	FY11	FY12	FY13	FY14	FY15
PSCOC Lease Assistance Award	\$ 236,250	\$ 261,806	\$ 255,342	\$ 255,346	\$ 268,972
Total HB-33 Revenue	\$ -	\$ -	\$ -	\$ -	\$ -
Total SB-9 Revenue	\$ -	\$ -	\$ 300,908	\$ 317,403	\$ 320,323
Charter Revenue	\$ 236,250	\$ 261,806	\$ 556,250	\$ 572,749	\$ 589,294

Source: PED and PSFA

Annual Facility Lease Cost					
	FY11	FY12	FY13	FY14	FY15
Actual Lease Cost	\$ 545,364	\$ 537,545	\$ 260,000	\$ 260,000	\$ 348,901
Square Footage	41,147	41,177	37,078	37,095	37,098
Lease Cost per Square Foot	\$ 13.25	\$ 13.05	\$ 7.01	\$ 7.01	\$ 9.40

Source: PSFA

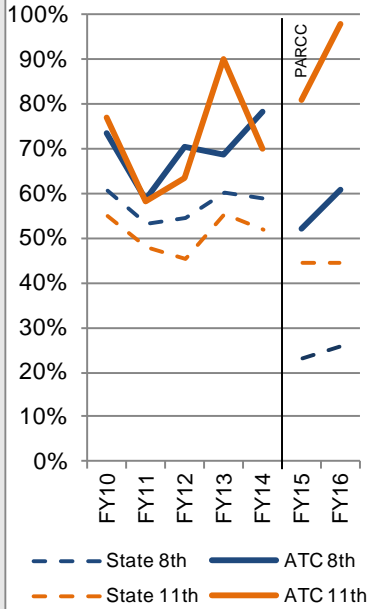
Data on School SEG Expenditures*	2014-2015 Expenditure				2015-2016 Budgeted		
	ATC		Statewide		ATC		Statewide
	Expenditure	Percent	Percent	Expenditure	Percent	Percent	
Direct Instruction	\$1,815,226	70.0%	61.9%	\$1,776,638	69.6%	60.7%	
Instructional Support Services	\$776,850	30.0%	37.9%	\$776,435	30.4%	38.8%	
Students	\$155,339	6.0%	9.7%	\$201,462	7.9%	9.6%	
Instruction	\$686	0.0%	2.8%	\$5,000	0.2%	2.7%	
General Administration	\$22,653	0.9%	2.0%	\$18,800	0.7%	2.0%	
School Administration	\$309,288	11.9%	6.8%	\$272,745	10.7%	6.4%	
Central Services	\$105,571	4.1%	3.4%	\$94,804	3.7%	3.4%	
Operations & Maintenance	\$182,939	7.1%	12.9%	\$151,058	5.9%	13.3%	
Student Transportation	\$7	0.0%	0.2%	\$1,125	0.0%	0.2%	
Other Support Services	\$367	0.0%	0.2%	\$31,441	1.2%	1.2%	
Non-Instructional Support	\$0	0.0%	0.2%	\$0	0.0%	0.2%	
Food Service	\$0	0.0%	0.1%	\$0	0.0%	0.1%	
Community Service	\$0	0.0%	0.1%	\$0	0.0%	0.1%	
Capital Outlay	\$0	0.0%	0.1%	\$0	0.0%	0.3%	
Total Expenditures	\$2,592,076			\$2,553,073			

*Includes General Fund Only

Source: PED Stat Book

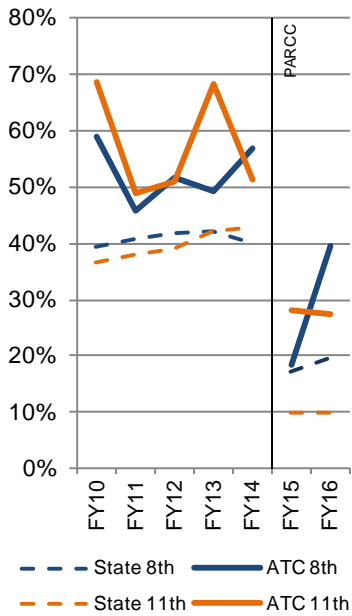
CHARTER ACCOUNTABILITY RESULTS

Reading Proficiency History
(FY15-FY16 includes PARCC Data)



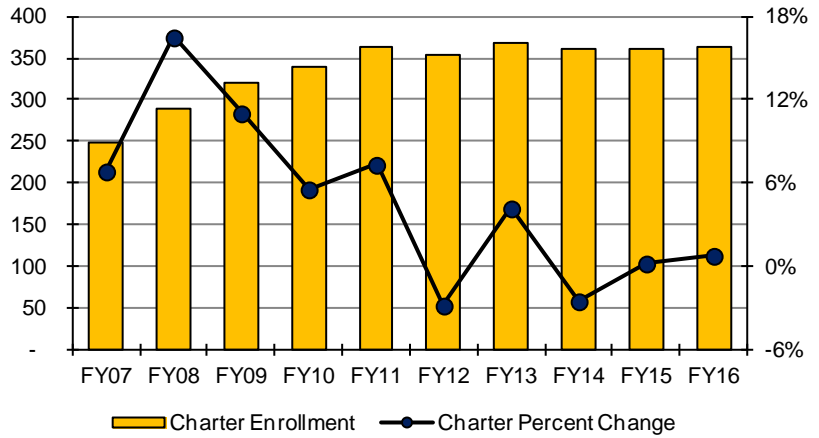
Source: PED

Math Proficiency History
(FY15-FY16 includes PARCC Data)



Source: PED

Enrollment Data with Annual Percentage Change



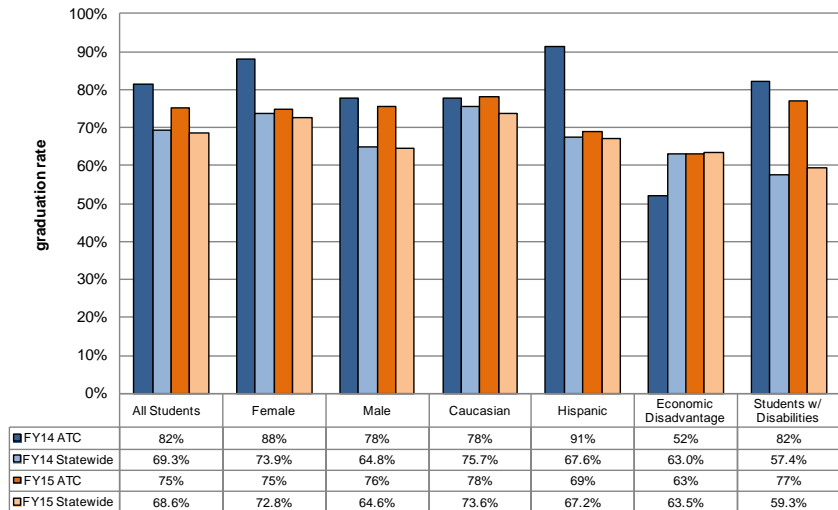
Source: PED

2015-2016 Student Demographics

	Academy for Tech. and the Classics		Statewide	
	#	%	#	%
Female	174	48.9%	165,360	48.8%
Male	182	51.1%	173,158	51.2%
Caucasian	154	43.3%	83,179	24.6%
African American	5	1.4%	7,299	2.2%
Hispanic	173	48.6%	207,381	61.3%
Asian/Pacific Islander	19	5.3%	4,843	1.4%
Native American	5	1.4%	35,816	10.6%
Multiracial	0	0.0%	11	<0.1%
English Learners	18	5.1%	48,076	14.2%
Students with Disabilities	34	9.6%	49,259	14.6%
Free/Reduced Lunch	0	0.0%	235,861	69.7%
Migrant	0	0.0%	322	0.1%

Source: PED

4-Year Cohort Graduation Rates - ATC vs. Statewide



Source: PED