

Turquoise Trail Charter Elementary School
13A San Marcos Loop
Santa Fe, NM 87508
(505) 986-4000

Dr. Ray Griffin
Principal / Head Administrator
(505) 986-4006
rgriffin@ttschool.org

Jenny Crysler
Business Manager
(505) 986-4053
jcrysler@ttschool.org

Danielle Garcia
Data Manager / Test Coordinator
(505) 986-4000
dgarcia@ttschool.org

Joe Maes
General Operations / Facilities
(505) 986-4008
jmaes@ttschool.org

TEACHER QUALITY
2015-2016

Total number of teachers:
 ➤ 37

Percent of teachers where
 highest degree reported
 is a Bachelor's (2011-2012):
 ➤ 46% (17)

Percent of teachers where
 highest degree reported is
 a Master's or higher (2011-2012):
 ➤ 51% (19)

| Turquoise Trail Charter Elementary School (TTCE) | | | | | | | | |
|---|---------|--------------|------|------|------|------|-------------------------|-------------|
| Title I, School Grade Report, and Weighted Facility Condition Index | | | | | | | | |
| School | Title I | School Grade | | | | | School Condition (FY17) | |
| | | FY12 | FY13 | FY14 | FY15 | FY16 | wNMCI* | PSFA Rank** |
| Turquoise Trail Charter Elementary | Y | C | D | A | C | B | 7.5% | 562 |

*Statewide average wNMCI: 19 percent.

Sources: PED and PSFA

**Ranks closer to 1 indicate a higher priority for PSCOC standards-based award.

| TTCE Quick Overview | |
|----------------------|----------|
| Year Opened | 2001 |
| Grades Served | PreK - 6 |
| Charter Type... | |
| ...in 2016 | State |
| ...from 2001 to 2015 | District |
| Within District | Santa Fe |
| N. of Teachers | 37 |
| FY16 Enrollment | 461 |
| S. - T. Ratio | 12.5 : 1 |

Source: PED and ATC

| Capital Revenue Sources | | | | | |
|------------------------------|-------------------|-------------------|-------------------|-------------------|-------------------|
| | FY11 | FY12 | FY13 | FY14 | FY15 |
| PSCOC Lease Assistance Award | \$ 324,131 | \$ 334,251 | \$ 333,554 | \$ 324,620 | \$ 324,620 |
| Total HB-33 Revenue | \$ 18,801 | \$ 5,051 | \$ 68,872 | \$ - | \$ - |
| Total SB-9 Revenue | \$ 40,567 | \$ 29,555 | \$ 447,438 | \$ 437,329 | \$ 363,454 |
| Total Capital Revenue | \$ 383,499 | \$ 368,857 | \$ 849,865 | \$ 761,949 | \$ 688,074 |

Source: PED and PSFA

| Annual Facility Lease Cost | | | | | |
|----------------------------|------------|------------|------------|------------|------------|
| | FY11 | FY12 | FY13 | FY14 | FY15 |
| Actual Lease Cost | \$ 325,500 | \$ 335,683 | \$ 350,412 | \$ 341,008 | \$ 341,008 |
| Square Footage | 59,899 | 59,899 | 69,104 | 69,104 | 69,104 |
| Lease Cost per Square Foot | \$ 5.43 | \$ 5.60 | \$ 5.07 | \$ 4.93 | \$ 4.93 |

Source: PSFA

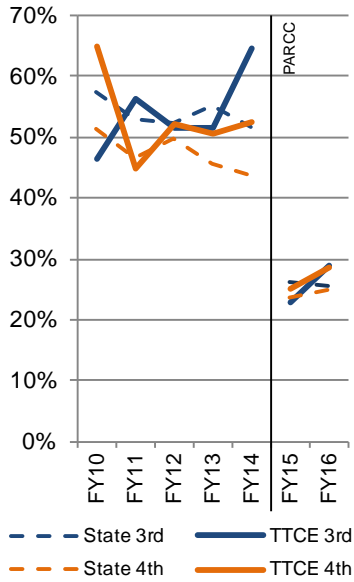
| Data on School SEG Expenditures* | 2014-2015 Expenditure | | | 2015-2016 Budgeted | | |
|---------------------------------------|-----------------------|--------------|--------------|--------------------|--------------|--------------|
| | TTCE | | Statewide | TTCE | | Statewide |
| | Expenditure | Percent | Percent | Expenditure | Percent | Percent |
| Direct Instruction | \$2,168,955 | 72.4% | 61.9% | \$2,394,115 | 66.1% | 60.7% |
| Instructional Support Services | \$826,795 | 27.6% | 37.9% | \$1,227,015 | 33.9% | 38.8% |
| Students | \$23,975 | 0.8% | 9.7% | \$335,450 | 9.3% | 9.6% |
| Instruction | \$32,294 | 1.1% | 2.8% | \$24,937 | 0.7% | 2.7% |
| General Administration | \$28,247 | 0.9% | 2.0% | \$37,106 | 1.0% | 2.0% |
| School Administration | \$291,528 | 9.7% | 6.8% | \$302,414 | 8.4% | 6.4% |
| Central Services | \$153,921 | 5.1% | 3.4% | \$142,060 | 3.9% | 3.4% |
| Operations & Maintenance | \$291,212 | 9.7% | 12.9% | \$349,725 | 9.7% | 13.3% |
| Student Transportation | \$0 | 0.0% | 0.2% | \$0 | 0.0% | 0.2% |
| Other Support Services | \$5,618 | 0.0% | 0.2% | \$35,323 | 1.0% | 1.2% |
| Non-Instructional Support | \$568 | 0.0% | 0.2% | \$0 | 0.0% | 0.2% |
| Food Service | \$568 | 0.0% | 0.1% | \$0 | 0.0% | 0.1% |
| Community Service | \$0 | 0.0% | 0.1% | \$0 | 0.0% | 0.1% |
| Capital Outlay | \$0 | 0.0% | 0.1% | \$0 | 0.0% | 0.3% |
| Total Expenditures | \$2,996,318 | | | \$3,621,130 | | |

*Includes General Fund Only

Source: PED Stat Book

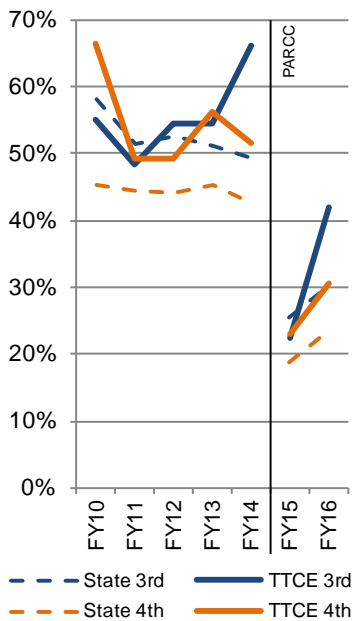
CHARTER ACCOUNTABILITY RESULTS

Reading Proficiency History
(FY15-FY16 includes PARCC Data)



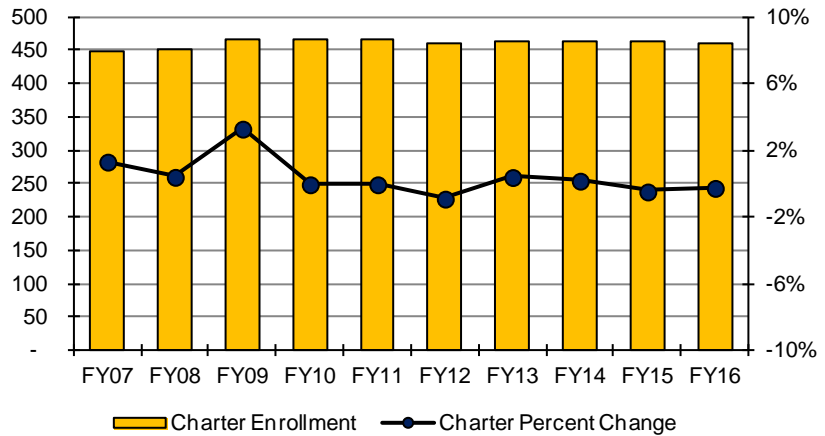
Source: PED

Math Proficiency History
(FY15-FY16 includes PARCC Data)



Source: PED

Enrollment Data with Annual Percentage Change



Source: PED

2015-2016 Student Demographics

| | Turquoise Trail Charter Elementary | | Statewide | |
|----------------------------|------------------------------------|-------|-----------|-------|
| | # | % | # | % |
| Female | 229 | 49.5% | 165,360 | 48.8% |
| Male | 234 | 50.5% | 173,158 | 51.2% |
| Caucasian | 121 | 26.1% | 83,179 | 24.6% |
| African American | 6 | 1.3% | 7,299 | 2.2% |
| Hispanic | 325 | 70.2% | 207,381 | 61.3% |
| Asian/Pacific Islander | 8 | 1.7% | 4,843 | 1.4% |
| Native American | 3 | 0.6% | 35,816 | 10.6% |
| Multiracial | 0 | 0.0% | 11 | <0.1% |
| English Learners | 102 | 22.0% | 48,076 | 14.2% |
| Students with Disabilities | 59 | 12.7% | 49,259 | 14.6% |
| Free/Reduced Lunch | 293 | 63.3% | 235,861 | 69.7% |
| Migrant | 0 | 0.0% | 322 | 0.1% |

Source: PED

| FY16 Grade Breakdown | TTCE | State "C" Benchmark* | Max Points |
|----------------------------------|-------------|----------------------|--------------|
| Current Standing | 19.2 | 21.3 | 40.0 |
| School Growth | 5.7 | 5.8 | 10.0 |
| Student Growth (High Performers) | 11.2 | 7.2 | 20.0 |
| Student Growth (Low Performers) | 10.2 | 15.3 | 20.0 |
| Opportunity to Learn | 9.2 | 7.5 | 10.0 |
| Graduation | 0.0 | 0.0 | 0.0 |
| College and Career Readiness | 0.0 | 0.0 | 0.0 |
| Total Points | 55.4 | 57.1 | 100.0 |
| Bonus Points | 5.0 | 1.6 | 5.0 |
| Total with Bonus Points | 60.4 | 58.7 | 105.0 |

*The Statewide "C" benchmark was fixed in 2011 and is not recalculated year-to-year

Source: PED