

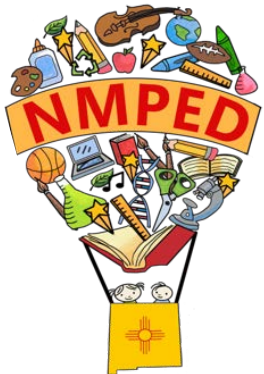
Progress Report: Statewide Real-Time Data Solution

Presented to the Legislative Education Study Committee

Chair: Sen. Bill Soules

Vice Chair: Rep. Andrés Romero

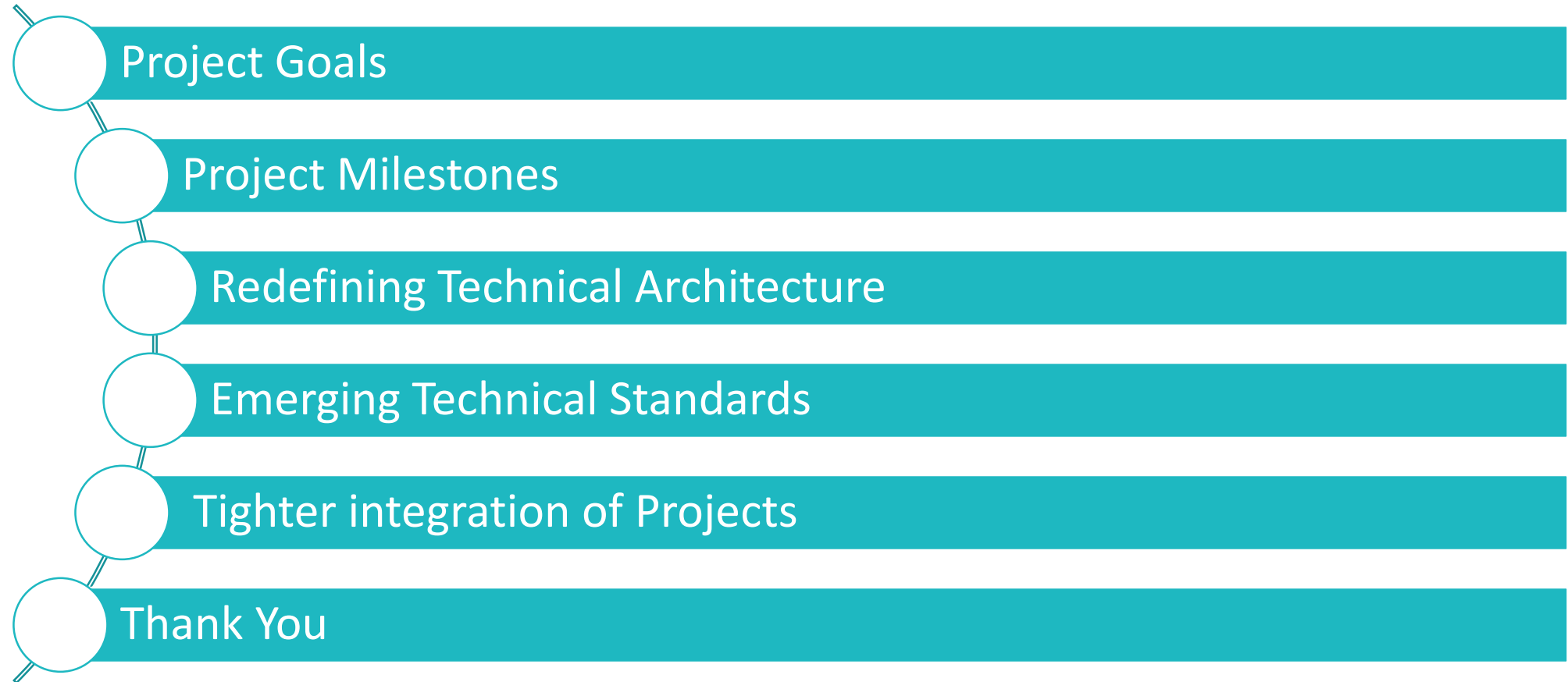
October 5, 2021



Jean Wood
Project Management Office
Public Education Department
jean.wood@state.nm.us



Today's Agenda



Introductions and Thanks

- Thank you for continuing to fund technology projects that support the work of Public Education Department and New Mexico's schools.
 - FY19: \$652 thousand to plan and design a “real-time data system”
 - FY20: \$500 thousand for “data system upgrades”
 - FY21: \$1.5 million for “data system upgrades”
- Additionally, SB96 (2020) enabled PED to establish a new standard for data reporting

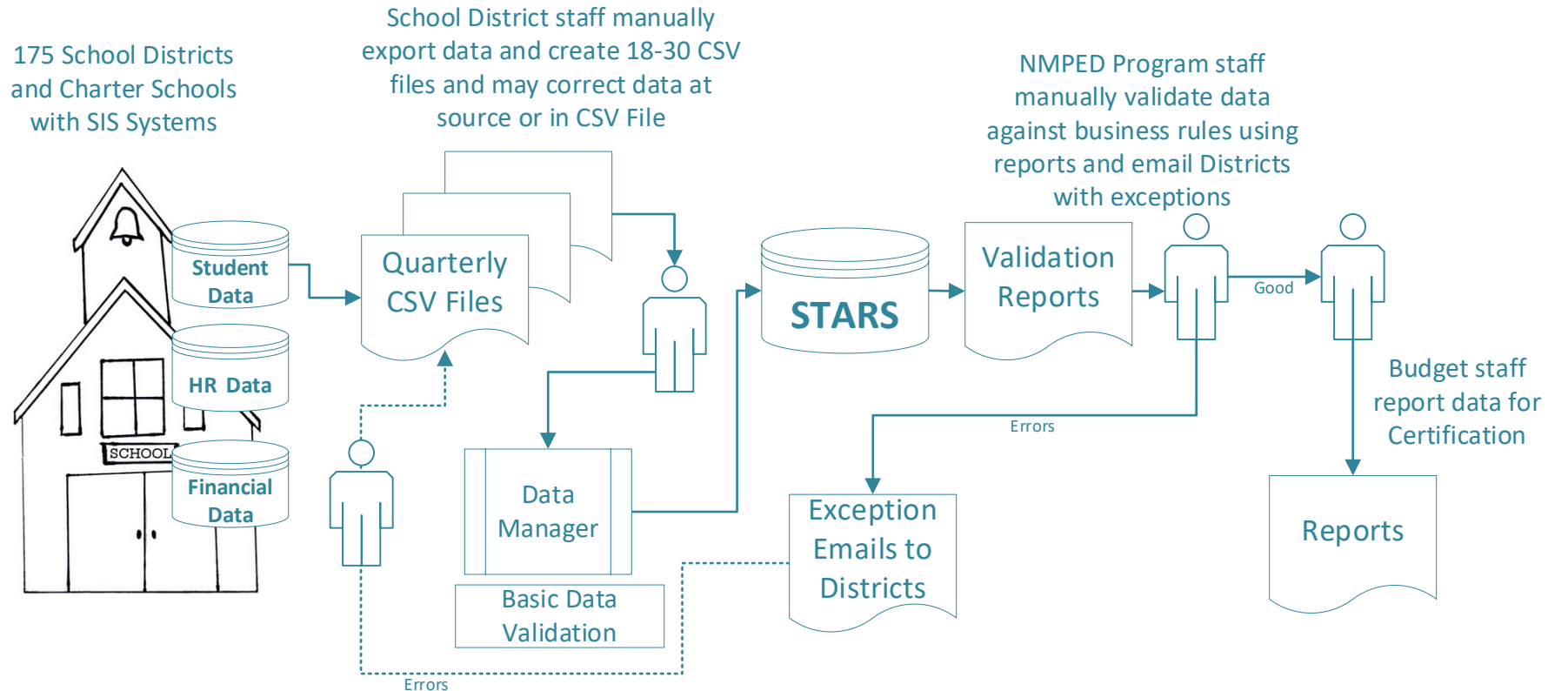


Nova* Project Goals:

*Nova is the nickname for the project officially known as Statewide Real-Time Data Management Solution

From This:

- Requires an estimated 2000 staff hours for each reporting period
- Manual processes for
 - data submission,
 - validation, and
 - Certification.

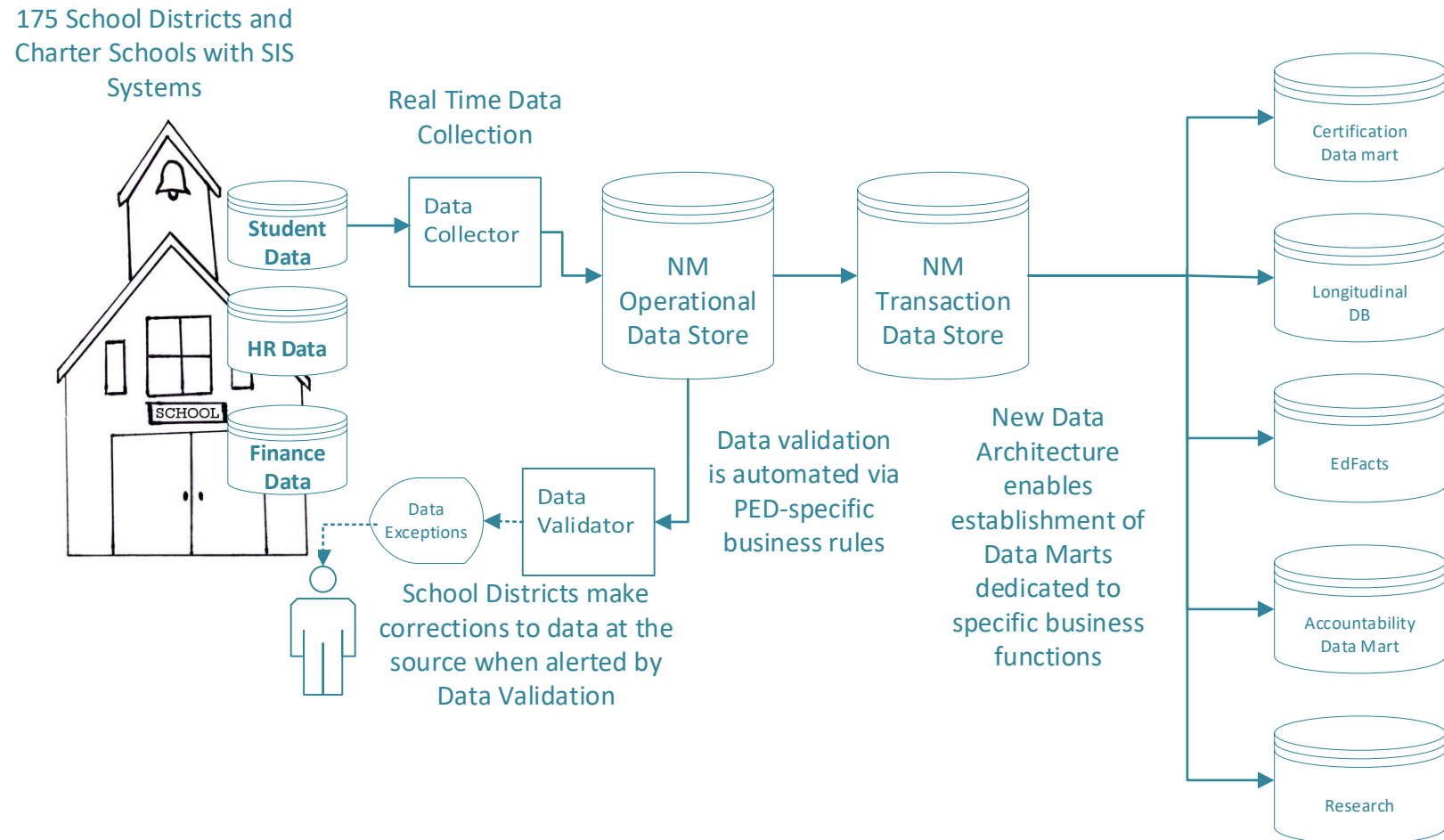


Nova Project Goals:

To This:

Certified data is available faster through:

- Automated data collection
- Improved, automated, data validation and certification



Project Milestones

FY20

- RFP completed
- Vendor selected
- Funding request granted by Legislature
- Project Kick-off
- Pilots configured and data collected (APS, Los Alamos and Turquoise Trail)

FY21

- Second Year funding is available
- New Stars Unique ID system Deployed
- Full Production System (Hardware and Software) Deployed
- New CIO joins PED
- LEA work group established
- Technical Review completed with decision to move to new standard: Ed-Fi
- Work Sessions with Student Information Systems Vendors begin
- Ed-Fi Proof of Concept completed and data collected (Rio Rancho)

FY22

- Ed-Fi Data Profile Published
- Programming extensions to Ed-Fi Application Programming Interface (API) Completed
- Ed-Fi to Legacy system Interface created
- Work with Student Information System (SIS) Vendors and Pilot LEAs to support their completion of d-Fi API with NM extensions
- As SIS Vendors certify their implementation, support roll-out to their LEA customers

Redefining Technical Architecture

Technical Review Included:

- LEA work group established to review requirements, LEA “pain points” and advantages to moving to Ed-Fi for them
- Discussions with states that had implemented Ed-Fi standard for data collection
- Identifying the need to continue to make all existing STARS reports available during the Transition

System Architecture Changes:

- Based on Ed-Fi Data Standard
- Maintains the existing STARS database and reports (for a smoother transition)

Emerging Technical Standards

Why Ed-Fi? Data Interoperability



Ed-Fi is a nationally recognized data format standard.

The Ed-Fi framework is being used to collect:

- Student data from Student Information Systems
- Financial and Staff Data from LEA Financial/HR Systems
- Assessment Data from Assessment Vendors
- Educator Prep Program Data from Higher Education Student Information Systems

As Nova nears completion, Ed-Fi will become the standard for PED data collection

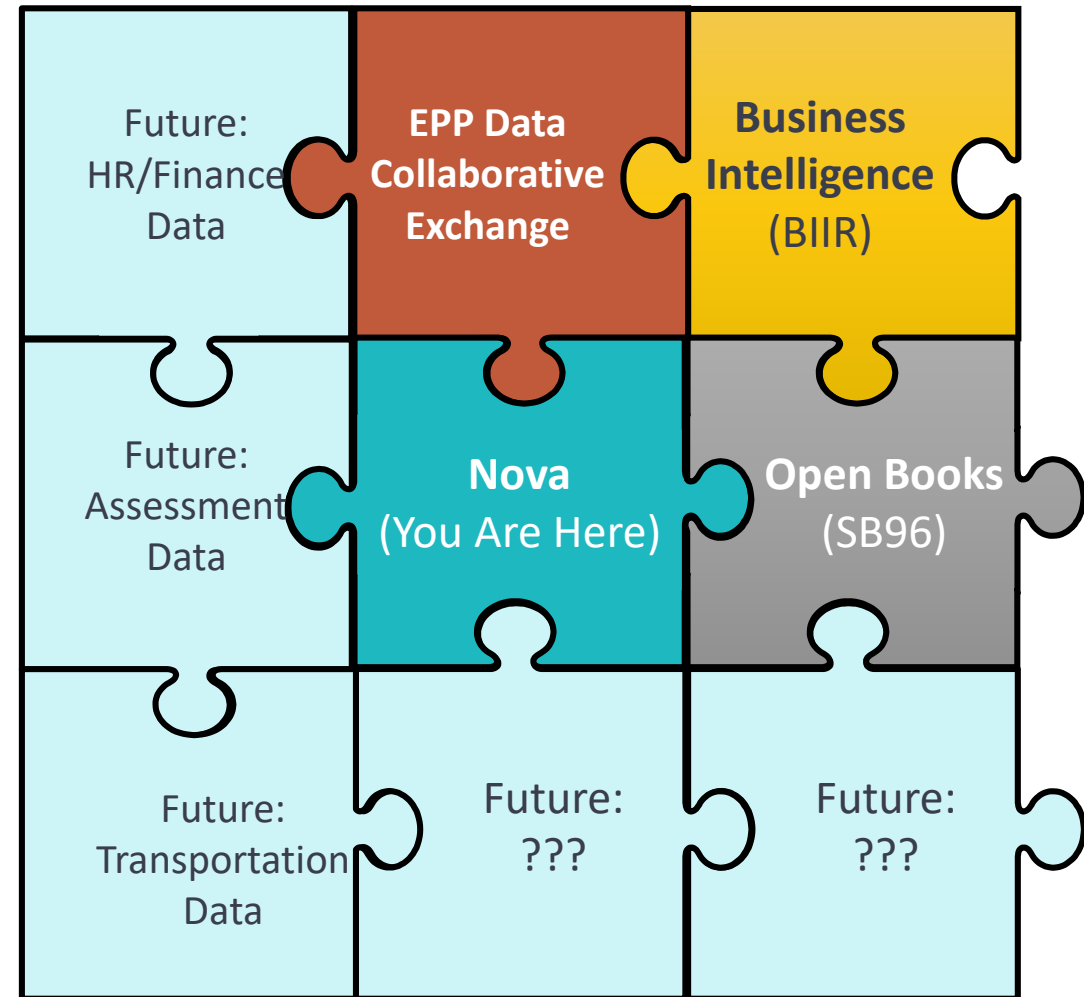
Tighter Integration of Projects

Data Collection

Standardizing on Ed-Fi Data Collection allows future data collections to build on existing platform and tools

Data Analysis & Reporting

Standardizing on Google Cloud Platform and Big Data tools enables PED staff to directly query data and create their own data visualizations.



Thank You

Thank you for the opportunity to report on our progress with Real-Time Data Collection and IT's strategy to move forward with standards for data collection and analysis for all projects.

Questions?

