



New Mexico Reopening Discussion

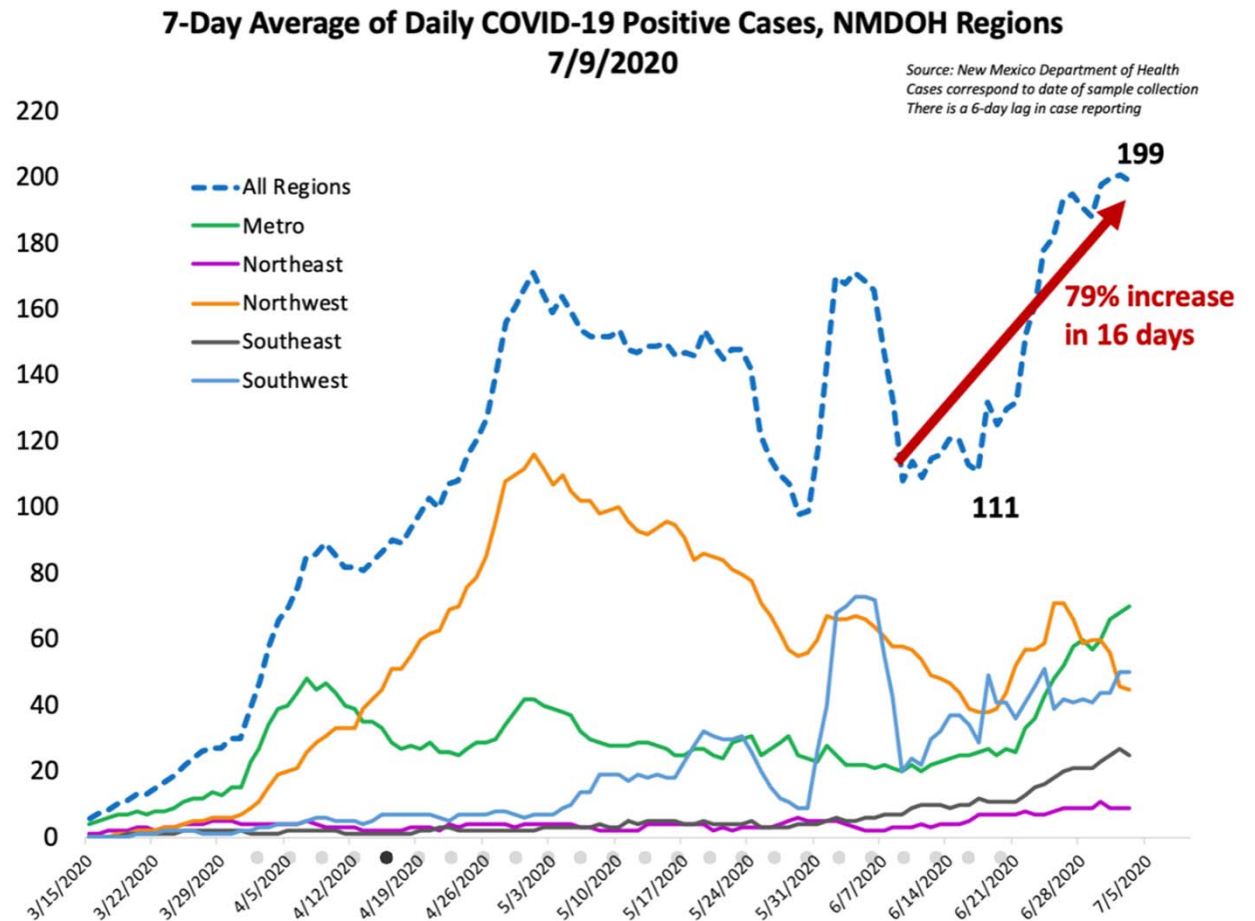
Presentation to the Legislative Finance Committee
July 15, 2020

John Bingaman
Chief of Staff
Office of Governor Michelle Lujan Grisham

New Case Trends

New Mexico flattened the curve early in this crisis through quick and aggressive action.

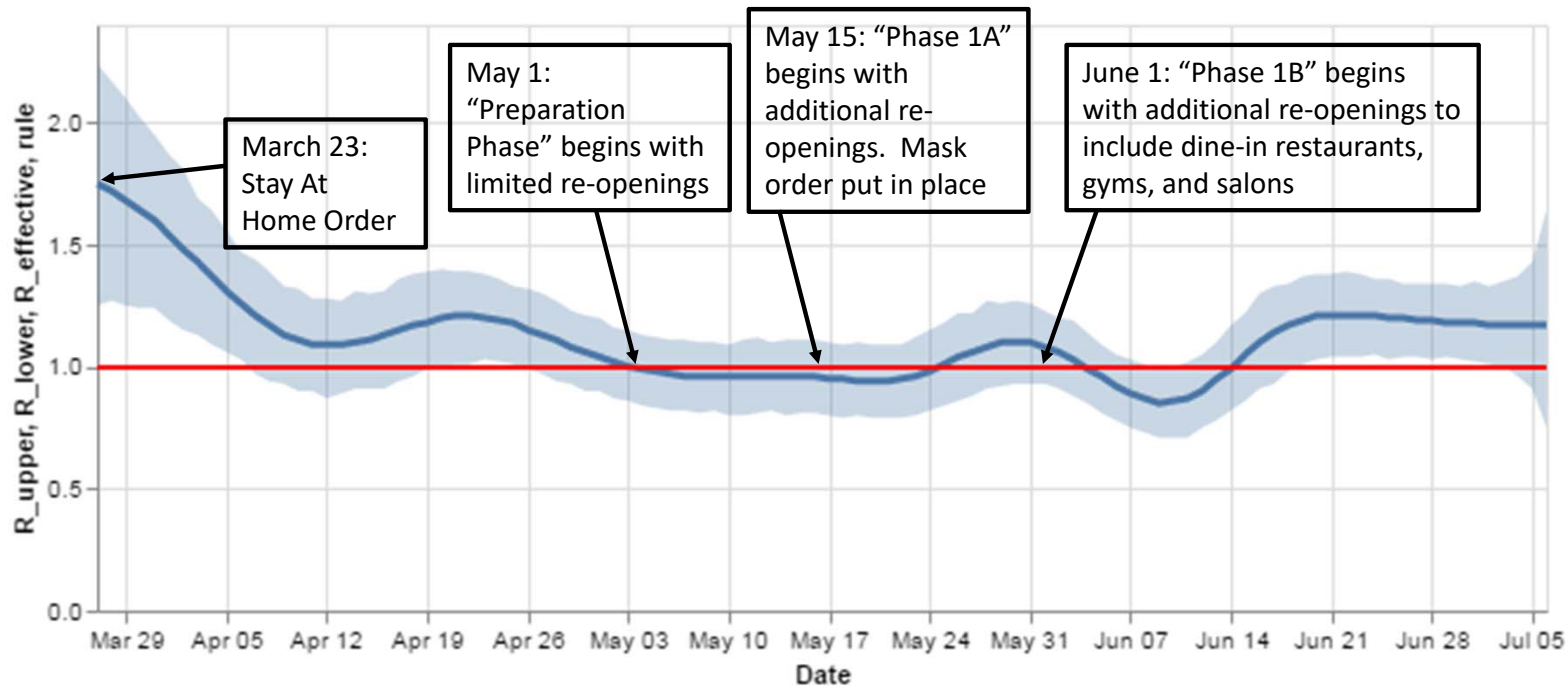
Now we are seeing a concerning increase in cases tied to reopenings and insufficient adherence to the public health order.



Rate of Spread

In the wake of the full Phase One reopening of the state on June 1, the rate of spread of COVID-19 infections increased substantially and has remained elevated.

$R_{\text{effective}}$ over time, STATE



Source: MAT modeling presentation. Data as of 7/6/20

Regional Rate of Spread

Unlike previous spikes in infections, the current surge is not tied to any congregate facilities or driven by any particular region of the state; but, rather, it is the result of *community spread statewide*.

Only Northwest New Mexico is seeing an $R_{\text{effective}} < 1.0$, as the region recovers from its surge.

Northwest: $R_{\text{effective}}$ 0.8

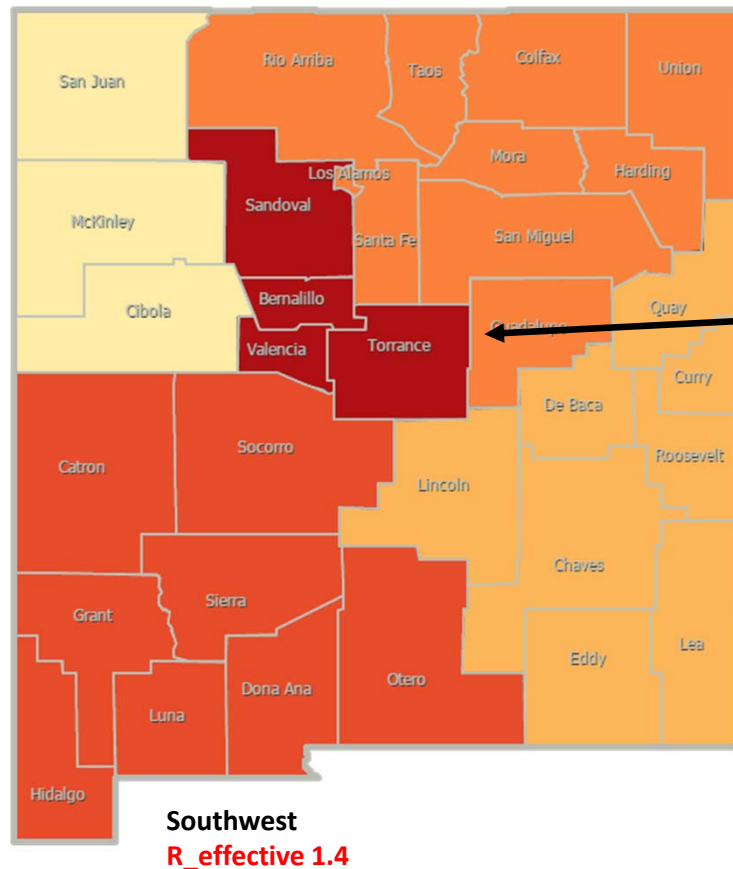
Northeast $R_{\text{effective}}$ 1.1

Key

Low Level Endemic < 1.0

Approaching Low Level Endemic
1.0-1.05

Requiring further mitigation > 1.05



Central
 $R_{\text{effective}}$ 1.3

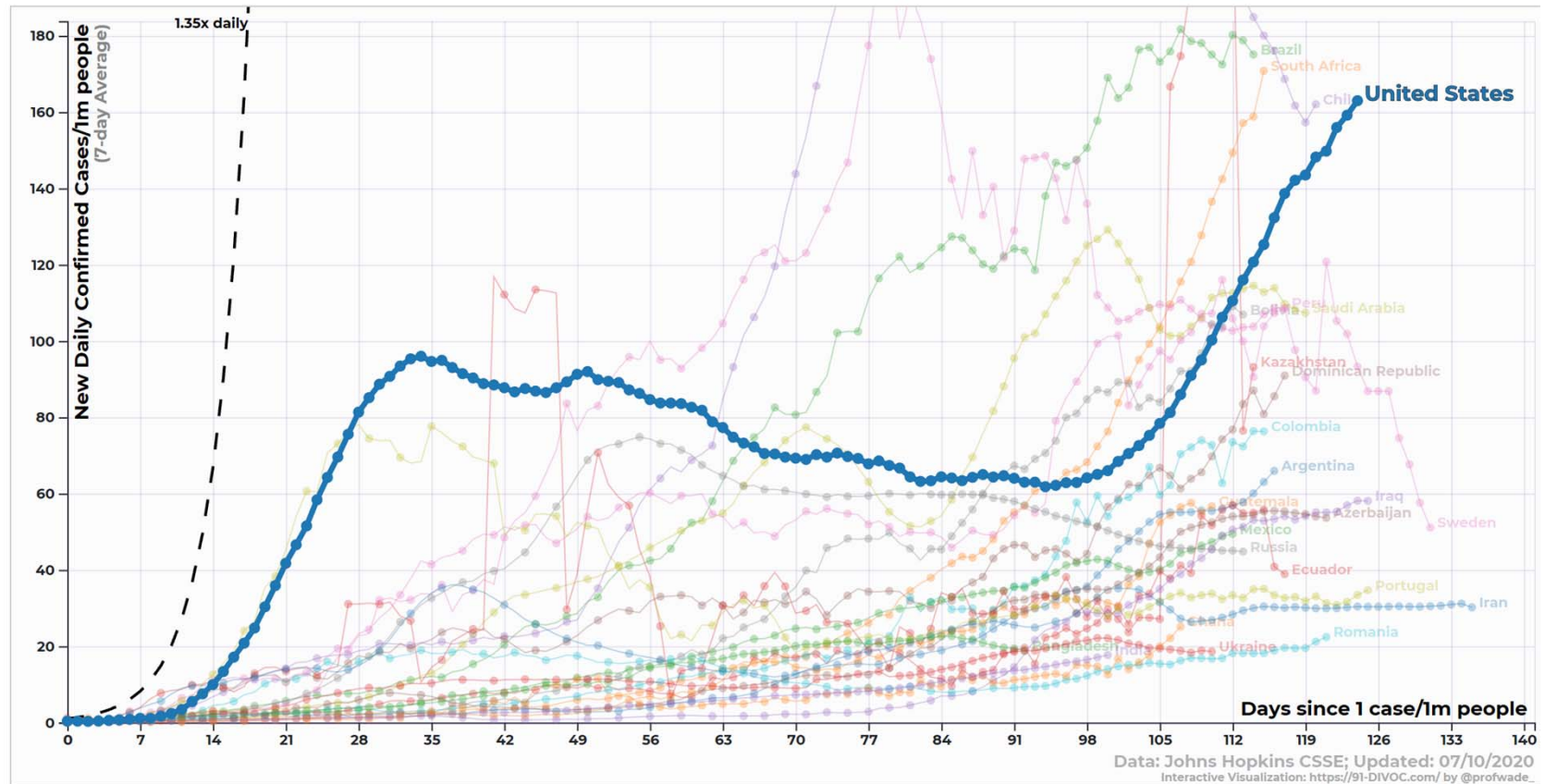
Southeast
 $R_{\text{effective}}$ 1.3

Southwest
 $R_{\text{effective}}$ 1.4

National Infections Surge

The increase in New Mexico cases occurs within the broader U.S. context.

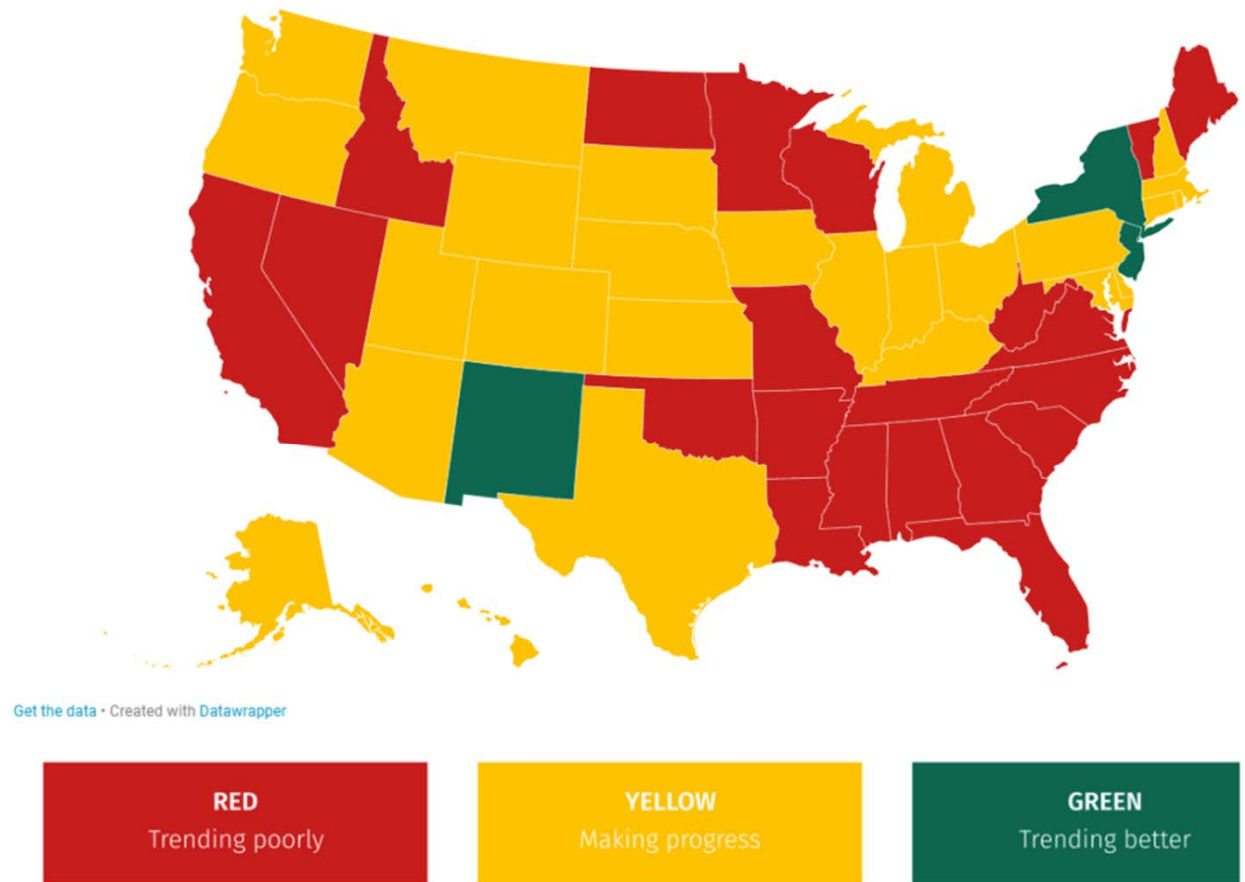
The U.S. now faces one of the worst outbreaks globally.



Reopening Readiness Snapshot: 6 Weeks Ago

As of late May, New Mexico was one of only three states deemed “ready to start reopening” by a group of epidemiologists looking at data nationwide.

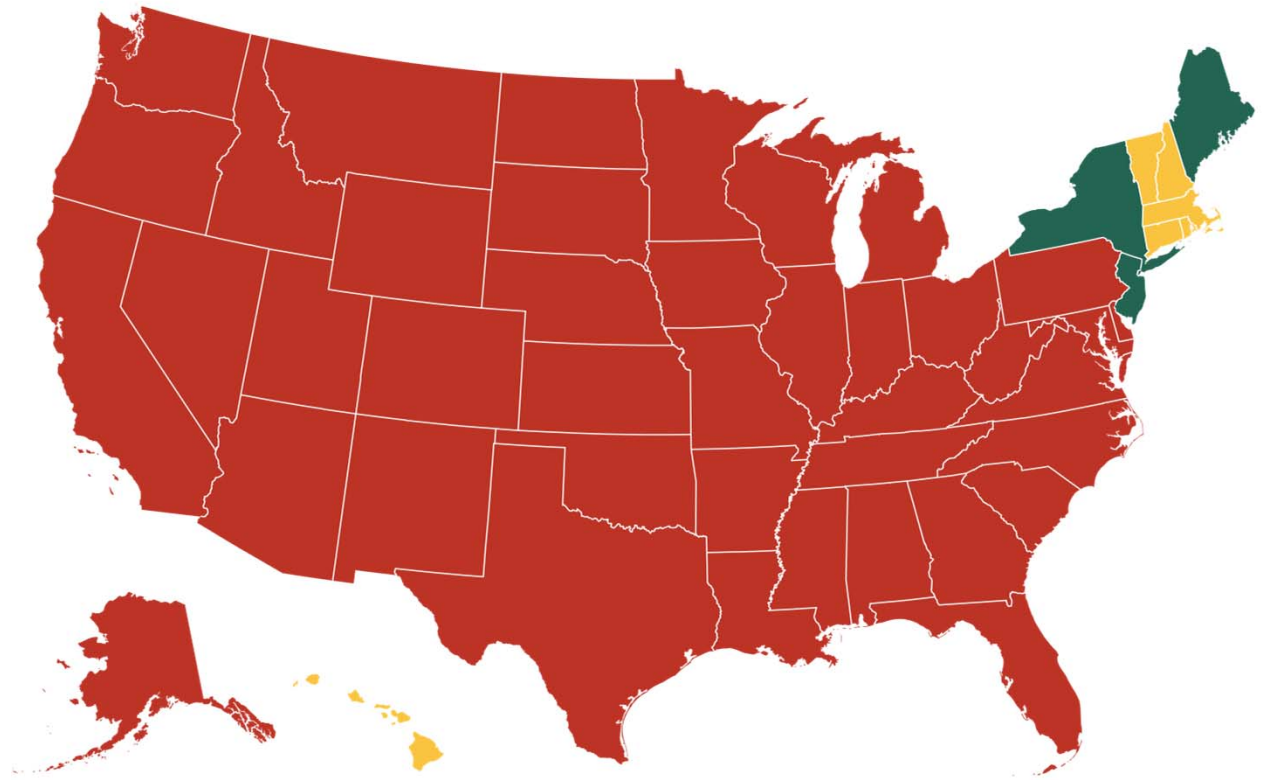
At that time, many states were approaching readiness based on stable case counts and other factors.



Source: COVIDExitStrategy.org. Data as of May 28, 2020

Reopening Readiness Snapshot: Today

Today, 44 out of 50 states are seeing increasing new case volumes, with New Mexico neighbors Texas and Arizona among the states seeing the sharpest increases.



Approach to Reopening

The Trump Administration released a set of Reopening Guidelines on April 16, 2020, including proposed gating criteria for moving through successive phases of reopening.

New Mexico, like many states, developed our own reopening gating criteria that addressed many of the same concepts as the White House Guidelines, including rate of spread, testing, and hospital capacity.

New Mexico has consistently applied these gating criteria in making reopening decisions.

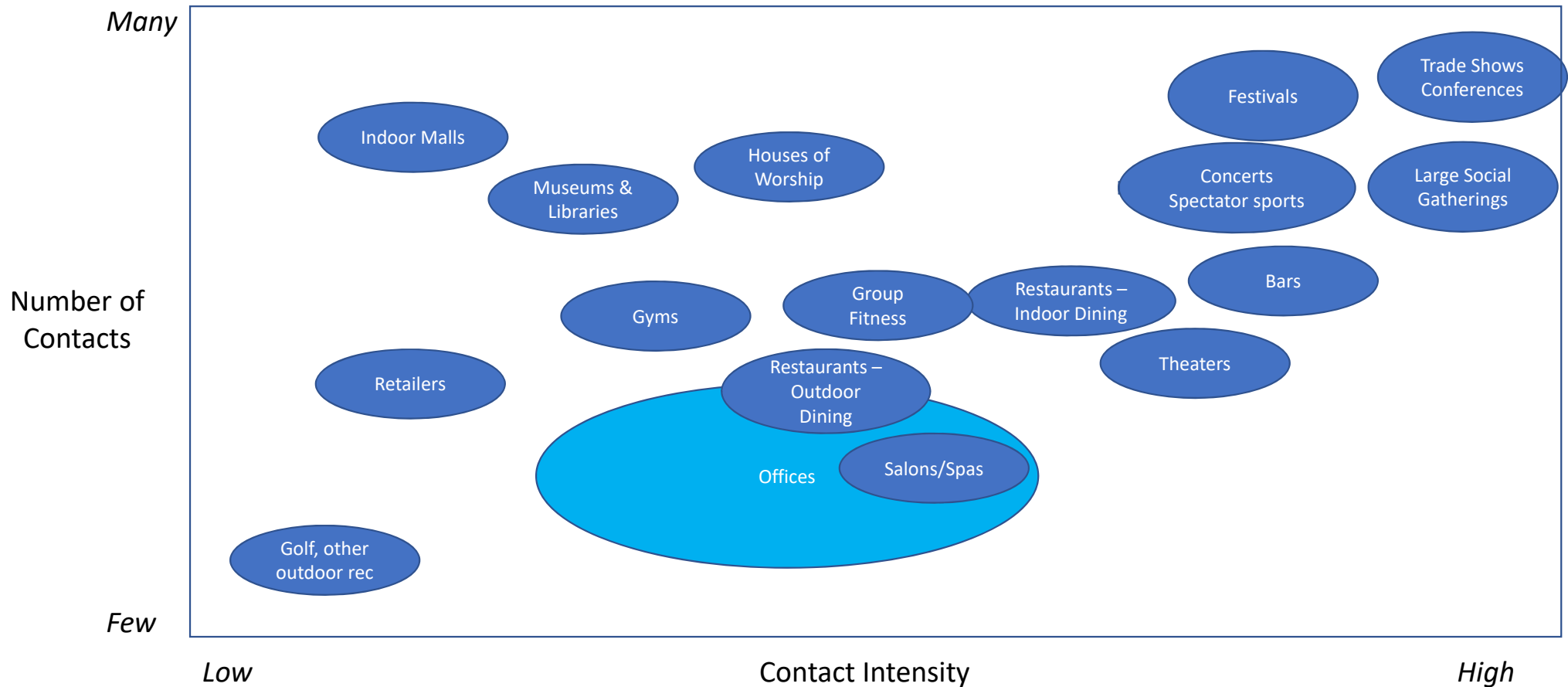


Statewide Public Health Gating Criteria

Criterion	Measure	Gating Value	Data as of 7/9/20
Spread of COVID-19	1. Rate of COVID-19 Transmission	1.05 or less	1.16
Testing Volumes	2. Number of tests per day (7-day rolling average)	5,000 / day or more	5,661
Contact Tracing and Isolation	3. Time from positive test result to isolation recommendation for case	24 hours or less	26 hours
	4. Time from positive test result to quarantine rec. for case contacts	36 hours or less	47 hours
Statewide Health Care System Capacity	Adult ICU Beds occupied across 7 NM Hub Hospitals	Less than 460	261
	7-day supply of personal protective equipment (PPE) across 7 NM Hub Hospitals	7-day supply in at least 6 out of 7 Hub Hospitals	7 out of 7 hospitals have 7-day+ supply

ALL CRITERIA DRIVEN BY SOCIAL DISTANCING BEHAVIORS OF NEW MEXICANS

Simple Framework for Assessing Risk



Source: Adapted from Johns Hopkins University, Bloomberg School of Public Health, Center for Health Security. Public Health Principles for a Phased Reopening During COVID-19: Guidance for Governors. April 7, 2020

Reopening Path

Preparation Phase: May 1

- Non-essential retailers operate via curbside pickup and delivery service
- Golf courses allowed to open for golf only
- Animal care services permitted to operate
- Restrictions on certain medical procedures lifted
- Mass Gatherings remain limited to <5 people

Phase 1A: May 15

- Retailers may operate according to Retail COVID-Safe Practices (“CSPs”) at 25% fire code occupancy
- Other non-essential businesses, unless otherwise prohibited, may operate according to CSPs at 25% occupancy
- Houses of worship may operate according to CSPs at 25% occupancy
- Mass Gatherings remain limited to <5 people

Phase 1B: June 1

- Dine-in service at restaurants permitted according to CSPs with 50% occupancy
- Hair salons, barbershops, tattoo parlors, massage and nail salons can operate according to CSPs at 25% occupancy
- Gyms at 50% occupancy according to CSPs
- Expansion of hotel occupancy limit to 50%
- Mass Gatherings remain limited to <5 people


Modified 1B (as of July 13)

- Substantially similar to Phase 1B, except that dine-in service at restaurants is permitted in outdoor areas only. Indoor dining is prohibited

Phase 2 (Timing TBD)

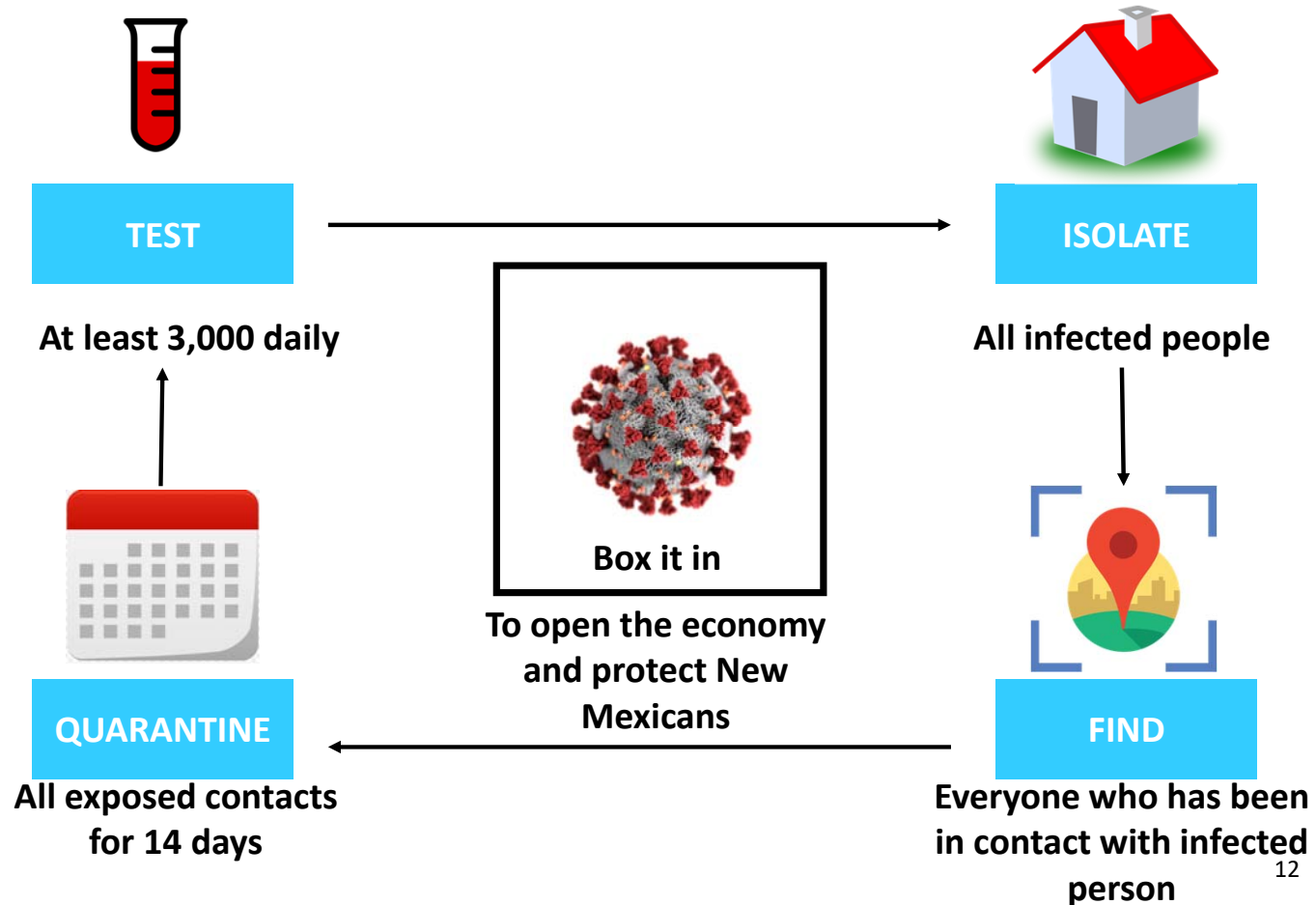
- Additional businesses permitted to open at limited occupancy according to CSPs, including cinemas, casinos, and recreational facilities


Statewide Mask Order Established to Support Reopening


Enhanced Travel Quarantine Order and Stepped-up Mask Enforcement to Mitigate Spread

Box It In: Testing and Contact Tracing

- Adequate testing and contact tracing resources are critical to reopening the economy
- Research shows that rapid and effective contact tracing slows the spread of the virus
- New Mexico has rapidly expanded its testing, contact tracing, and case isolation capabilities



[This Photo](#) by Unknown Author is licensed under [CC BY-SA](#)

[This Photo](#) by Unknown Author is licensed under [CC BY](#)

[This Photo](#) by Unknown Author is licensed under [CC BY-SA](#)

Source: Adapted from Association of State and Territorial Health Officials material and Open Texas report dated April 27, 2020

COVID-Safe Practices (CSPs) for All New Mexicans

Stay Home

- In general, stay at home: avoid unnecessary travel and always stay at home when you are sick (except for medical emergencies)
- Wash your hands frequently
- Avoid touching your eyes, nose, and mouth with unwashed hands
- Provide for all meetings to take place remotely whenever possible
- Cover your cough or sneeze with a tissue, then throw the tissue in the trash
- Clean and disinfect frequently touched objects and surfaces
- Watch for symptoms of COVID-19

If you must go out:

- Individuals are required to wear a face covering or mask in public spaces except when eating or drinking or unless otherwise advised by a health care provider
- Maintain a 6-foot distance from others
- Avoid gatherings
- Protect vulnerable populations by finding ways to connect without face-to-face contact

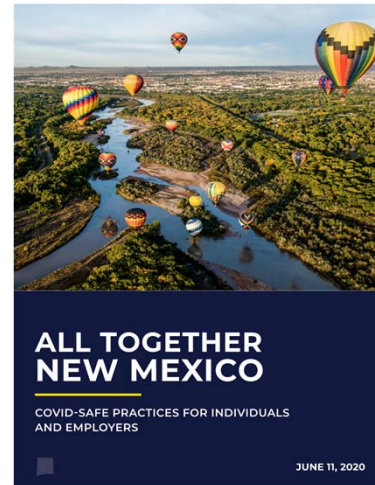
Required CSPs for All Employers

1. Limit operations to remote work to the greatest extent possible
2. Arrange workplace to provide for 6 feet of distance between individuals wherever possible
3. Close common areas where personnel are likely to congregate wherever possible or modify them to minimize contact
4. Provide for all meetings to take place remotely whenever possible
5. Ensure all employees have face coverings or masks and wear them in the workplace at all times when in the presence of others, except when eating or drinking or unless otherwise advised by a health care provider
6. Train all employees on daily cleaning and disinfecting protocol, hygiene, and respiratory etiquette (e.g., covering coughs)
7. Make handwashing, sanitizer, and other hygiene support available to employees
 - Note: the use of gloves is not a substitute for frequent handwashing
8. Screen employees before they enter the workplace each day (verbally or with a written form or text-based or other app). Send employees home who are experiencing the following COVID-19 symptoms related to COVID-19 and direct them to obtain free testing through the Department of Health
 - Fever, cough, shortness of breath, chills, repeated shaking with chills, muscle pain, headache, sore throat and/or loss of taste or smell
9. Prohibit employees with known close contact to a person who is lab-confirmed to have COVID-19 to return to work until authorized by the Department of Health
10. Minimize non-essential travel. Adhere to CDC guidelines and state orders regarding isolation following out-of-state travel
11. Adhere to all CDC and OSHA guidelines

Additional CSPs for Industry Sectors

Industry Sectors with Required and Best Practice CSPs Published

- Retail
- Restaurants
- Offices and Call Centers
- Grocery Stores and Farmers' Markets
- Summer Youth Programs
- Manufacturing, Warehouse, and Food Production
- Hotels, Resorts, and Lodging
- Golf Courses
- Tour Operators
- Houses of Worship
- Farm, Ranch, Dairy Producers & Processors
- Veterinarians and Pet Care Facilities
- Construction and Field Operations
- Automobile Dealers and Services
- Salons, Spas, Tattoo Parlors & Related Services
- Gyms
- Medical Providers, Childcare Centers & Other Industries
- Drive-In Events



Economic Recovery Council Roster

NAME	COMPANY	GEOGRAPHY
Brian Moore. Co-Chair	Clayton Ranch Market	Clayton
Christina Campos. Co-Chair	Guadalupe Regional Hospital	Santa Rosa
Jason Harrington	HB Construction	ABQ
Brian O'Leary	NBC/Universal	ABQ
Peter Trevisani	New Mexico United	Santa Fe
Sally Stahmann-Solis	Stahmanns Pecans	Las Cruces
Liddie Martinez	Enterprise Bank & Trust	Española
Jason Sandel	Aztec Well Family of Companies	Aztec
Allen Affeldt	Historic Plaza and La Castañeda Hotels	Las Vegas
Mark Fidel	RiskSense	ABQ
Staale Gjervik	XTO Energy	Carlsbad
Vince Alvarado	New Mexico Federation of Labor, AFL-CIO	ABQ
Phoebe Suina	High Water Mark LLC	Cochiti Pueblo
Carri Phillis	The Salt Yard, Effex Nightclub	ABQ
Jeremy Turner	Pattern Energy	ABQ

Recovery Council Subcommittees

- Economic Development
- Economic Relief
- Business Reopening and CSPs
- Enforcement
- Future of Work