
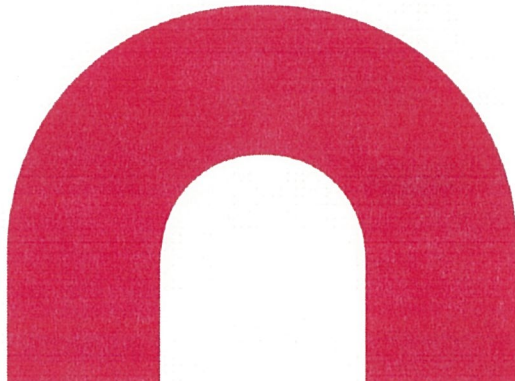


CHANGING THE STORY



of Albuquerque's Systems for People Experiencing Homelessness



1

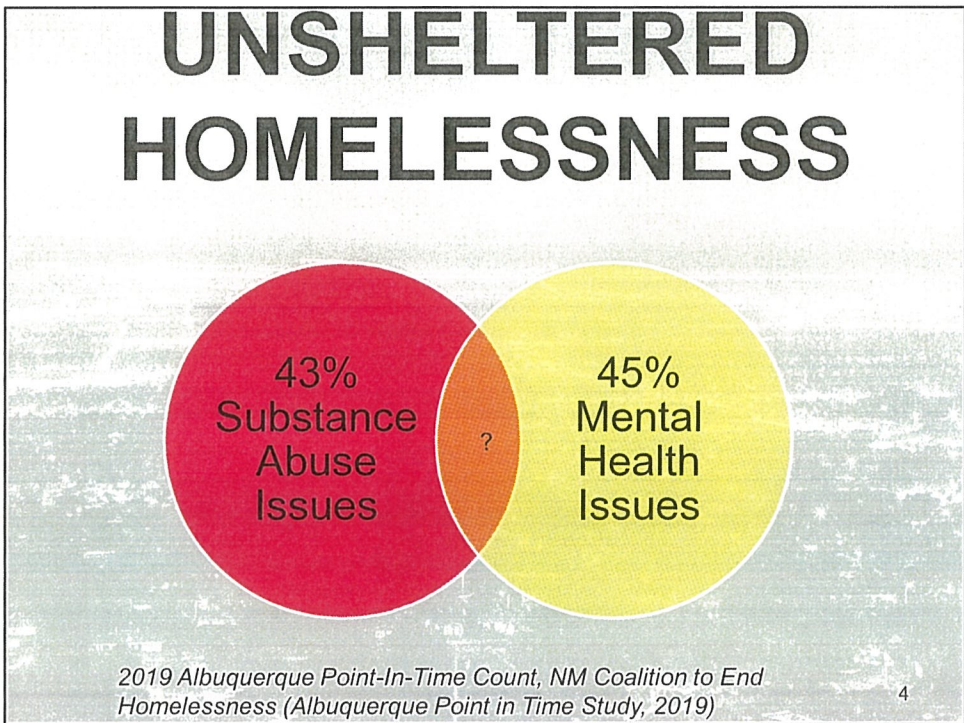
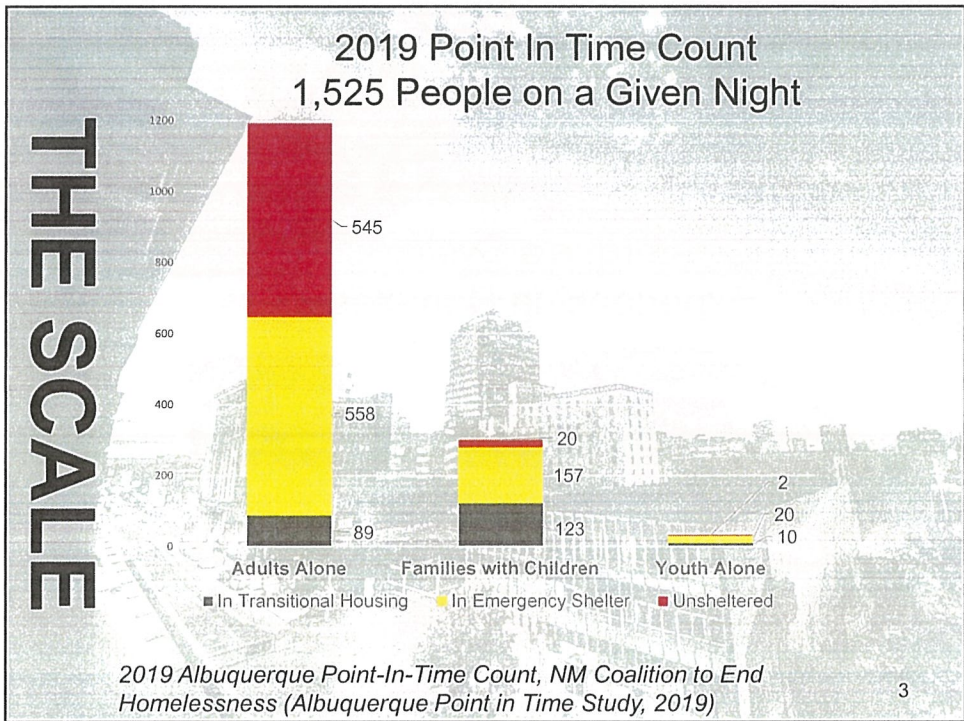
THE SCALE

Over the course of 2018, approximately 5,615 households experienced homelessness in Albuquerque



Coordinated Entry System Data CY2018, compiled by the NM Coalition to End Homelessness (Albuquerque CES, 2018)

2



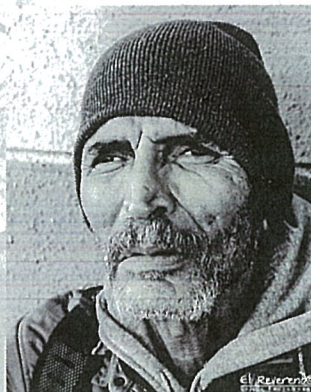
CHRONIC HOMELESSNESS

Reside on street or other place not meant for human habitation, or in shelter system

39% ON A TYPICAL NIGHT

Homeless for 12 months straight or a combined total of episodes over three years

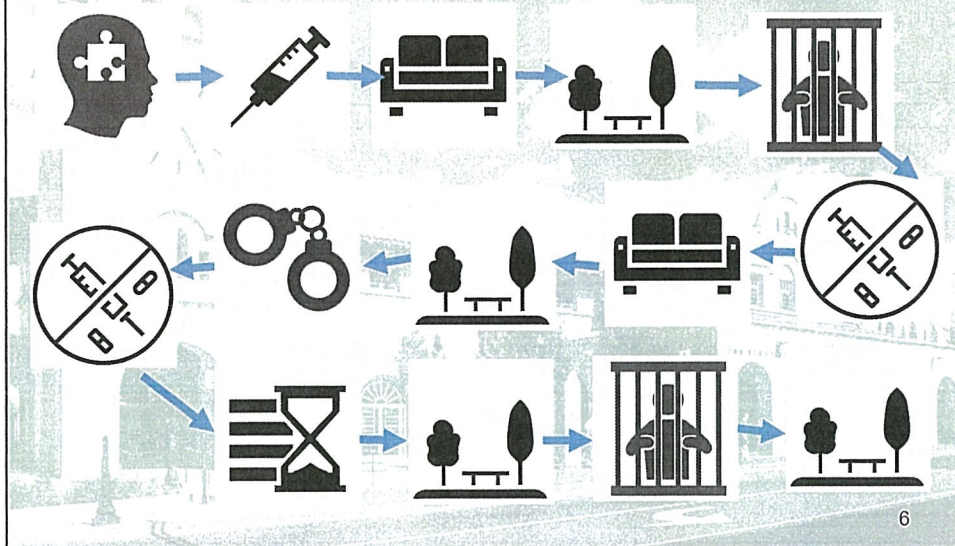
Has a disabling condition that is long lasting and impedes their ability to sustain housing.



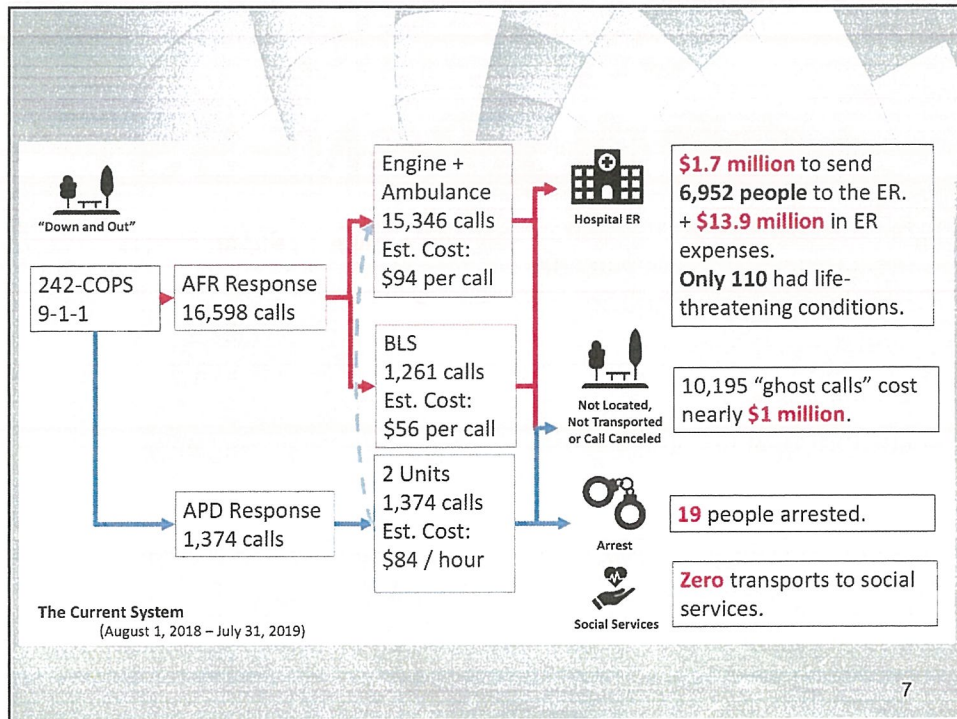
5

ONE ALBUQUERQUE

SYLVIA'S STORY



6



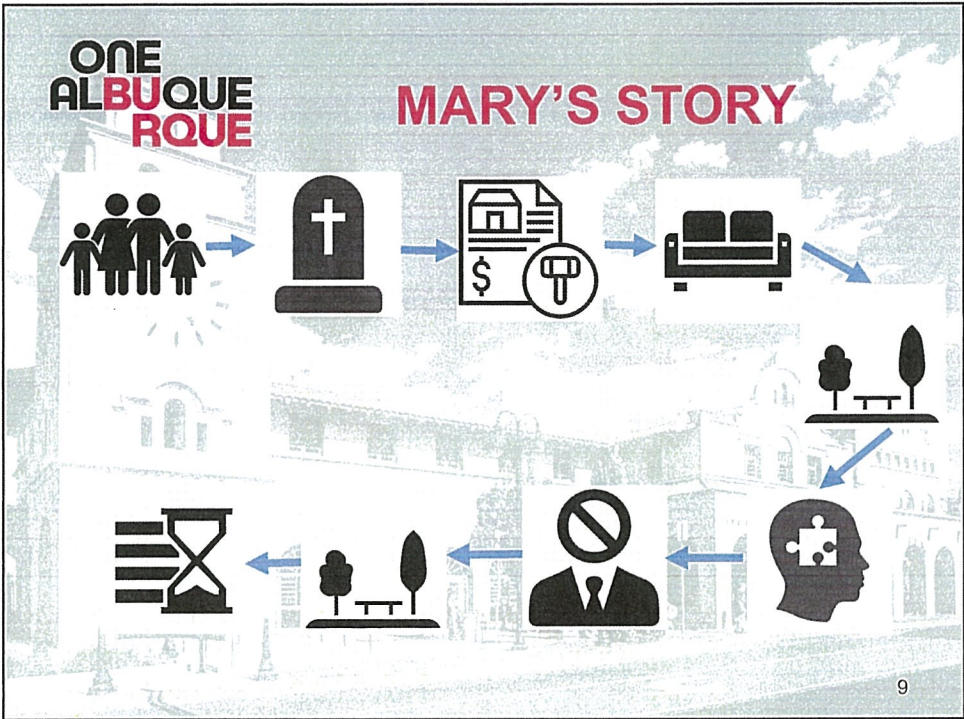
TRANSITIONAL HOMELESSNESS

Commonly enter the shelter system for a short stay, due to precarious housing or a catastrophic event.

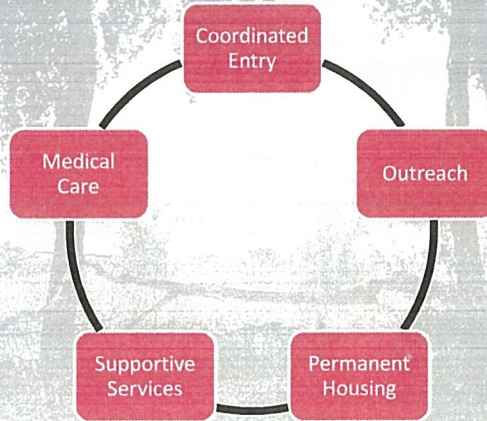
61% ON A TYPICAL NIGHT

Often are families or younger individuals





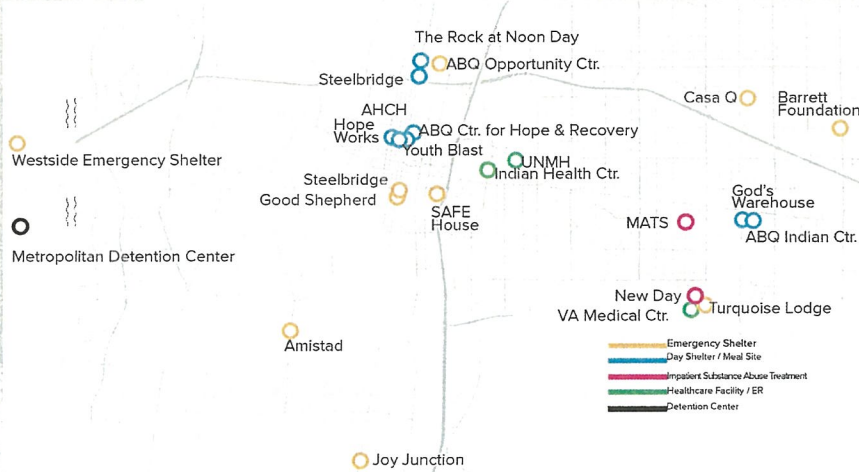
SYSTEM PROBLEMS NEED SYSTEM SOLUTIONS



11

MANY STRONG PARTNERS

EXISTING SYSTEMS



LACK OF CENTRALIZED EMERGENCY SHELTER CONNECTED TO PARTNERS

12

INTERIM SHELTER STRATEGY



Extend operations of Westside Emergency Housing Center

Partner with UNM-HSC and others for medical services

Partner with Bernalillo County for case management

Exorbitant transportation costs unfeasible in long-term

13

EMERGENCY SHELTER STRATEGY

Centrally located

Open 24 hours/7 days a week/365 days a year

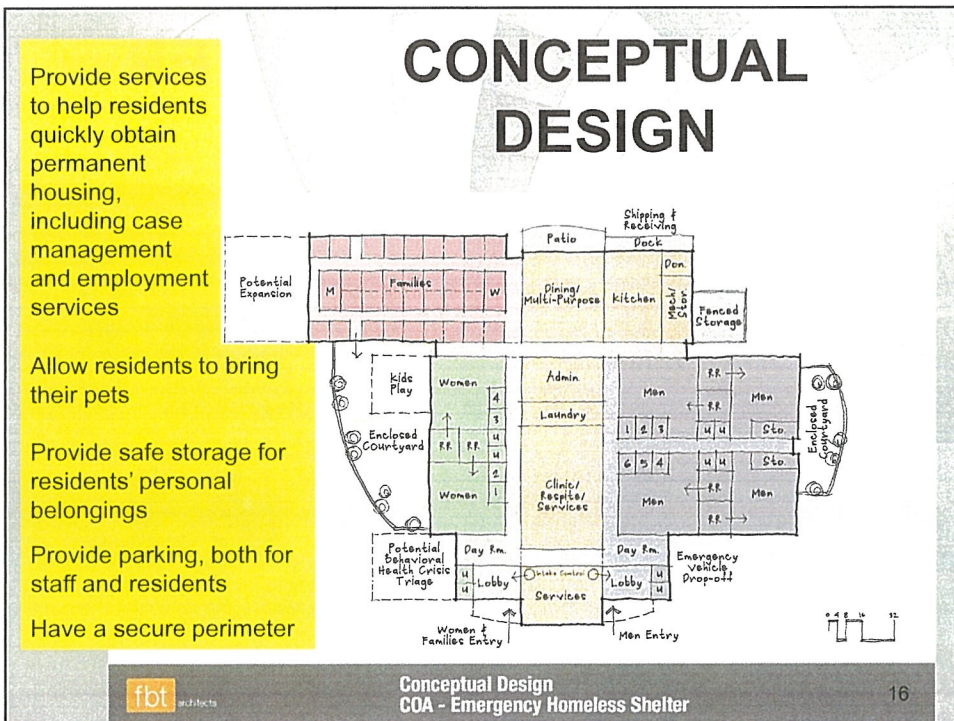
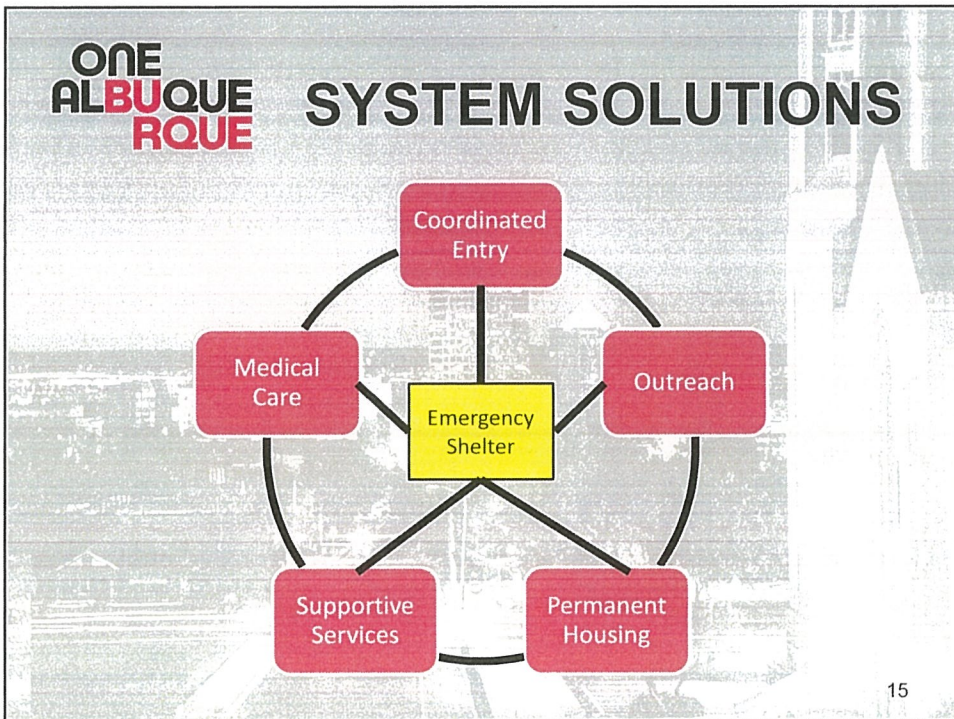
Onsite case management services

Connection to medical care, behavioral health care, substance abuse treatment

Strong exit strategies to permanent housing with support as needed



14



CONCEPTUAL DESIGN

Provide services to help residents quickly obtain permanent housing, including case management and employment services

Allow residents to bring their pets

Provide safe storage for residents' personal belongings

Provide parking, both for staff and residents

Have a secure perimeter

Conceptual Design
COA - Emergency Homeless Shelter

17

TIMELINE

2019 Planning process using state funds

- Preliminary conceptual design
- RFP for full architectural design
- National experts conduct study to determine right number of beds

November 2019 - GO Bond Election

2020 - Site selection and design

2020-21 - Construction

18

OTHER KEY STRATEGIES

Supportive Housing
Vouchers

Behavioral Health Services
and Triage

Affordable Housing

Street Outreach



19

QUESTIONS?

Photographs in this presentation are used with permission from and our sincere gratitude to the Albuquerque photographer Sal Gomez, who has been working to tell the stories of people experiencing homelessness in Albuquerque since 2015. His work highlights the humanity in this often misunderstood population.

20