

Project ECHO's

NEW MEXICO COMMUNITY PEER EDUCATION PROJECT

We believe that supporting Returning Citizens to become more accountable, interdependent, and goal-driven is essential to rebuilding and strengthening our communities.

20-HR TRAINING



20 hours of hybrid training for Returning Citizens presented by Project ECHO to certify Community Peer Educators (CPEs)

WEEKLY PEER GROUPS



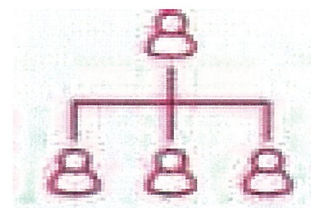
1-hour virtual group held by CPEs for individuals actively on adult supervision to learn skills, best practices, and life skills

PEER – TO – PEER



One-one-one peer mentorship to individuals on adult supervision which includes warm handoffs to local resources, shared lived experiences, and feedback.

MONTHLY ECHO SESSION



Monthly ECHO sessions which follow the ECHO model and capture best practices and potential gaps in the service provided to individuals on adult supervision.

CONTACTS

CARISSA MCGEE
Program Specialist
cbmcgee@salud.unm.edu
505.267.0729

DANIEL ROWAN
Program Manager
DhRowan@salud.unm.edu
505.510.3631

KARLA THORNTON
Associate Director
KThornton@salud.unm.edu
505.272.6335

New Mexico Community Peer Education Project

We believe that supporting Returning Citizens to become more accountable, interdependent, and goal-driven is essential to rebuilding and strengthening our communities.



Weekly Virtual Workshops

Join us every **Friday** at **1:00 pm** via zoom by phone or computer for our 1-hour video session for men and women on **probation or parole** across the state to learn various life skills.

It's a **safe space** for peers, led by peers, to **support peers** in overcoming the barriers commonly faced on supervision.

Workshop Topics include

Employment
Finances
Housing
Healthy Hobbies
Substance Use Support



Scan QR code
for link to join
or go to the
link below



<https://echo.zoom.us/j/95535906908>



Together, we empower local communities to access expert knowledge wherever they live.