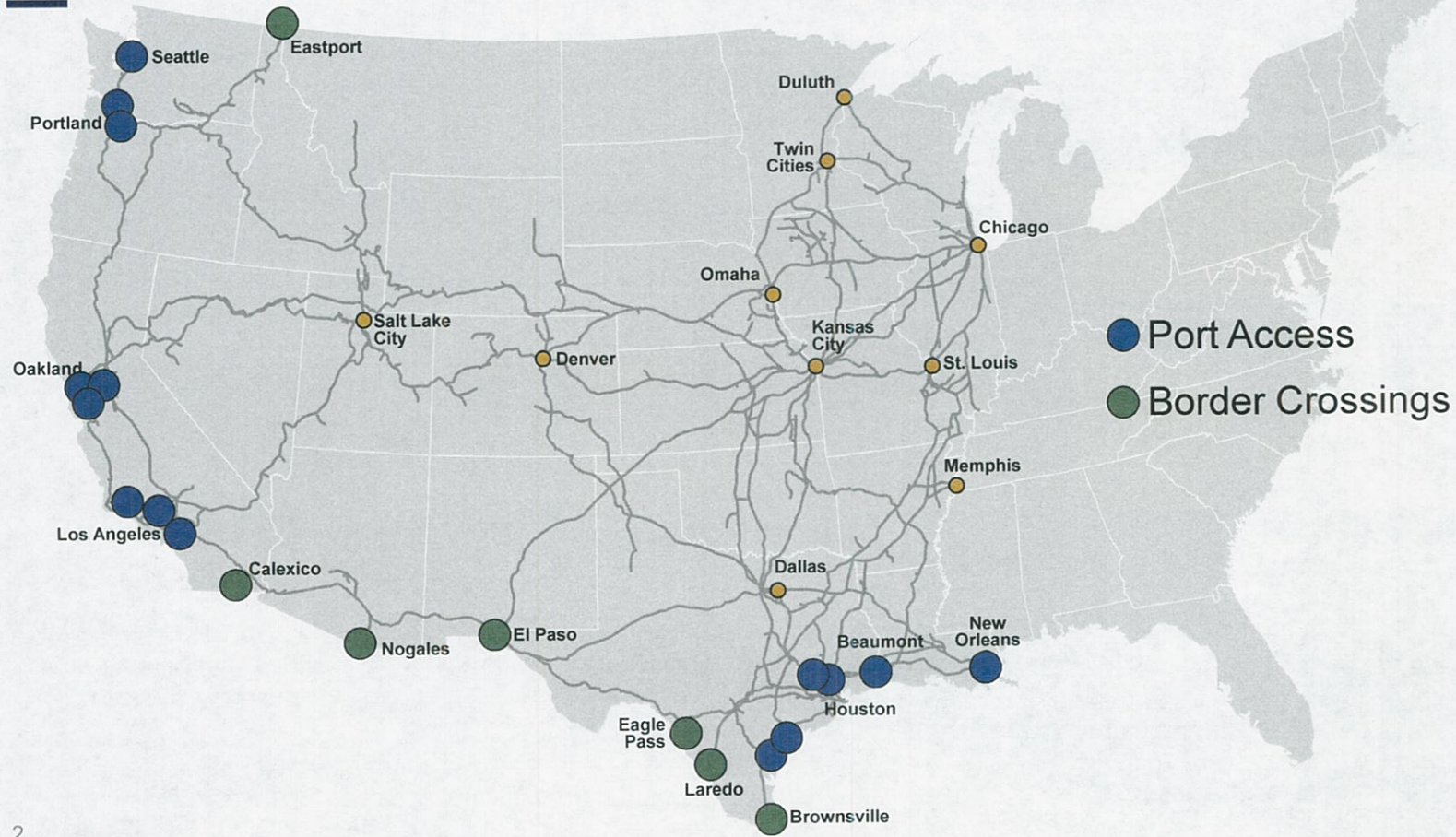


# Powering New Mexico's Economy

Raquel Espinoza, Senior Director - Public Affairs



# Union Pacific Railroad



● Port Access  
● Border Crossings



# Investing In Our Future

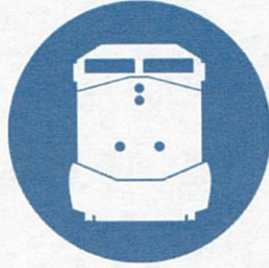
~\$3.6 Billion 2023 Capital Plan

53%



\$1.9 B  
Infrastructure  
Replacement

19%



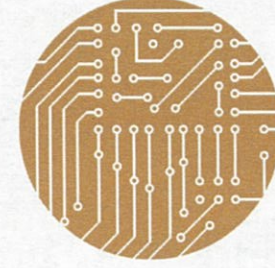
\$0.7 B  
Locomotives  
& Equipment

17%



\$0.6 B  
Capacity &  
Commercial  
Facilities

11%



\$0.4 B  
Technology  
& Other



# Keeping Communities Safe

More than 7,000 wayside detection devices monitor the condition of freight cars and locomotives in real time.



## Hot Box Detectors

measure bearing temperatures.



## Wheel Temperature Detectors

measure the temperature of the wheel plate.



## Acoustic Bearing Detectors

record bearing sound signatures.



## Wheel Impact Detectors

measure force exerted by an out-of-round wheel.



## Wheel Profile Detectors

measure wheel shapes with lasers to determine wear.



## Machine Vision Systems

analyze captured images to identify defects.



Wayside detectors generate more than 16M data points that send immediate alerts, allowing Union Pacific to:

STOP TRAIN IMMEDIATELY  
REPAIR AT NEXT PLANNED MAINTENANCE VISIT  
REPAIR AT NEXT LOCATION



# 99.9%

of all hazmat shipments  
by rail reach destination  
without incident.



# Yellow Outside

## Green Inside



- One train takes several hundred trucks off congested highways
- Rail is three to four times more fuel efficient than trucks



- Union Pacific can move one ton of freight nearly 500 miles on one gallon of diesel

# Union Pacific in New Mexico

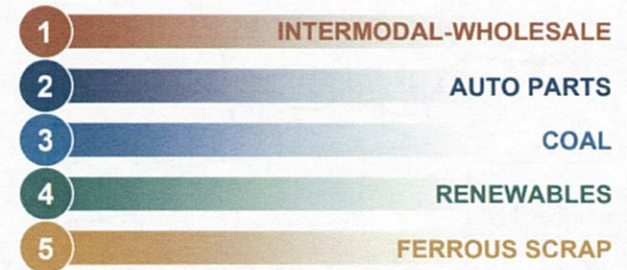
## 2022 FAST FACTS

Miles of Track .....	618
Annual Payroll.....	\$40.9 million
In-State Purchases .....	\$2.2 million
Capital Investment .....	\$44.9 million



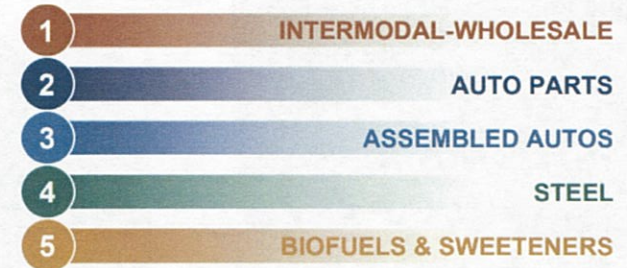
## TOP FIVE COMMODITIES SHIPPED

2022 BY VOLUME

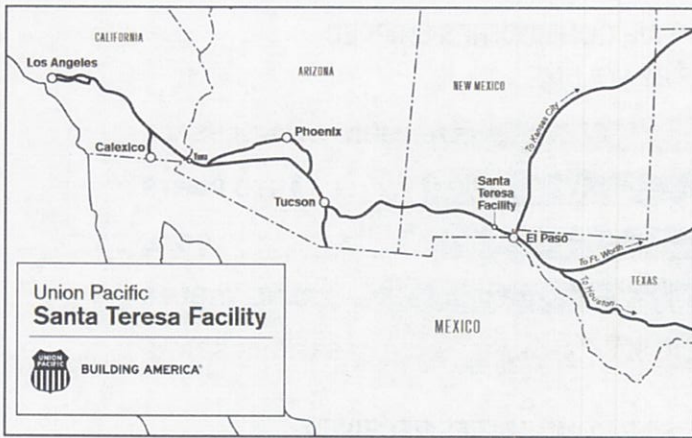


## TOP FIVE COMMODITIES RECEIVED

2022 BY VOLUME



# Supporting the Sunset Route

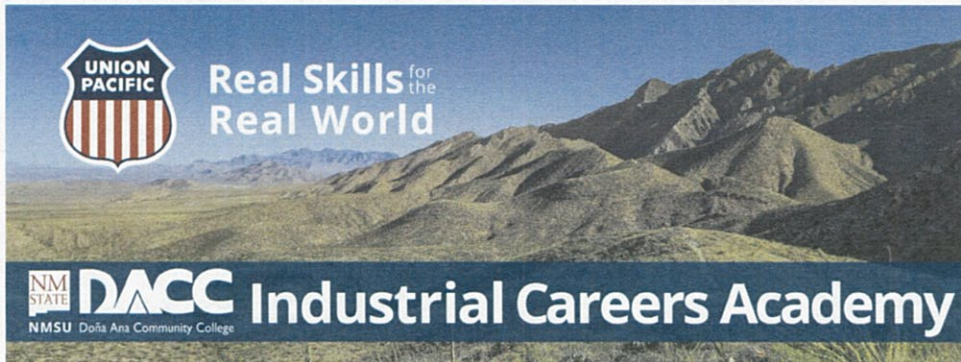


- East - West Intermodal Trains
  - Refuel and recrew trains between stops
- Locomotive Fuel Tax Deduction granted in 2013
  - El Paso refueling and recrew facility closed
  - \$400 million Santa Teresa Intermodal Terminal opened in 2014





# Historic Partnership with Doña Ana Community College Building New Mexico's Workforce



- **\$300,000 investment** introduced new trade career programs to Sunland Park/Santa Teresa/Southern New Mexico areas
- Fast-paced education programs aligned with local employer needs in manufacturing, warehousing and shipping
  - \$50,000 to establish Union Pacific Scholarship fund
- Builds Southern New Mexico's workforce with homegrown talent

# Thank You

Raquel Espinoza  
Senior Director - Public Affairs  
[respinoza@up.com](mailto:respinoza@up.com)

