



Review of Legislative Finance Committee (LFC) Child Welfare Analysis and Recommendations

Jon Courtney, Program Evaluation Manager

Kelly Klundt, Fiscal Analyst

October 10, 2018

Presentation Overview



- Summary of trends, spending and current situation
- Description of relevant programs impacting child welfare outcomes and recommendations
- Q&A



New Mexico Child Maltreatment

- Child welfare involvement is costly.
- The system is becoming more costly as child maltreatment rates climbed 28% over the last 5 years.
- NM families have a number of risk factors that could be addressed through preventative services.

NM Child Welfare System Facts:

- **\$107 thousand:** The average cost per child of a case of maltreatment resulting in adoption in New Mexico
- New Mexico's child victimization rate is significantly higher than the national average
- New Mexico's children have more adverse childhood experiences than children in most other states
- Rates of drug abuse and alcohol abuse for caregivers are more than double the national averages highlighting the need for prevention and intervention

Although new opportunities are arising, the use of federal funds for prevention is not new

Families First Prevention Services Act

- Opens up IV-E dollars to be used on prevention services (currently \$68 million (\$43 million federal)) used for foster care and adoption in NM)
- Seeks to decrease the use of group homes (aka congregate care)

Opportunities have existed for years to fund prevention services via:

- Title I of the Child Abuse Prevention and Treatment Act (CAPTA)
- Title II of CAPTA
- Title IV-B
- Social Services Block Grant Funding (SSBG)

CYFD's Protective Services reports delivering fewer prevention services than almost every other state in the nation.

- Preventative services per 1,000 in FY16 (Source: ACF Child Maltreatment 2016)
 - National average=25.1 per 1,000
 - **NM=1.7 per 1,000** (lower than any reporting state except South Carolina)

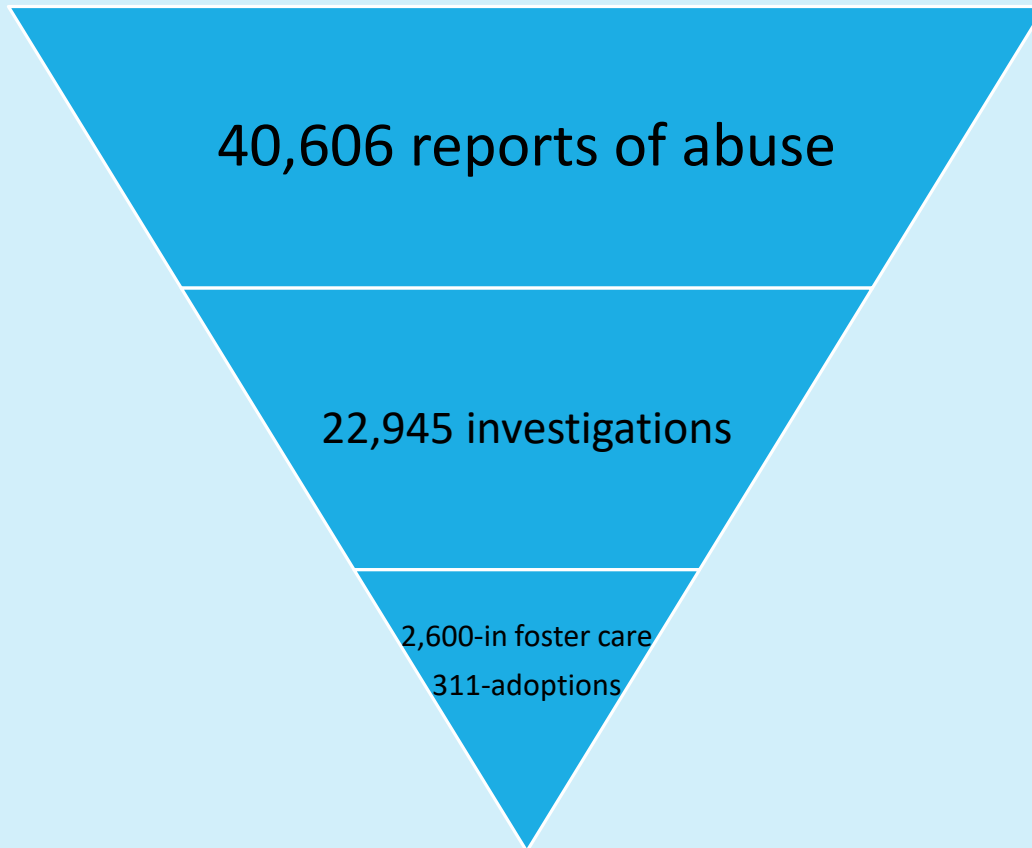
Likewise, the Legislature has asked for CYFD to focus on prevention and early intervention

According to state law, CYFD should:

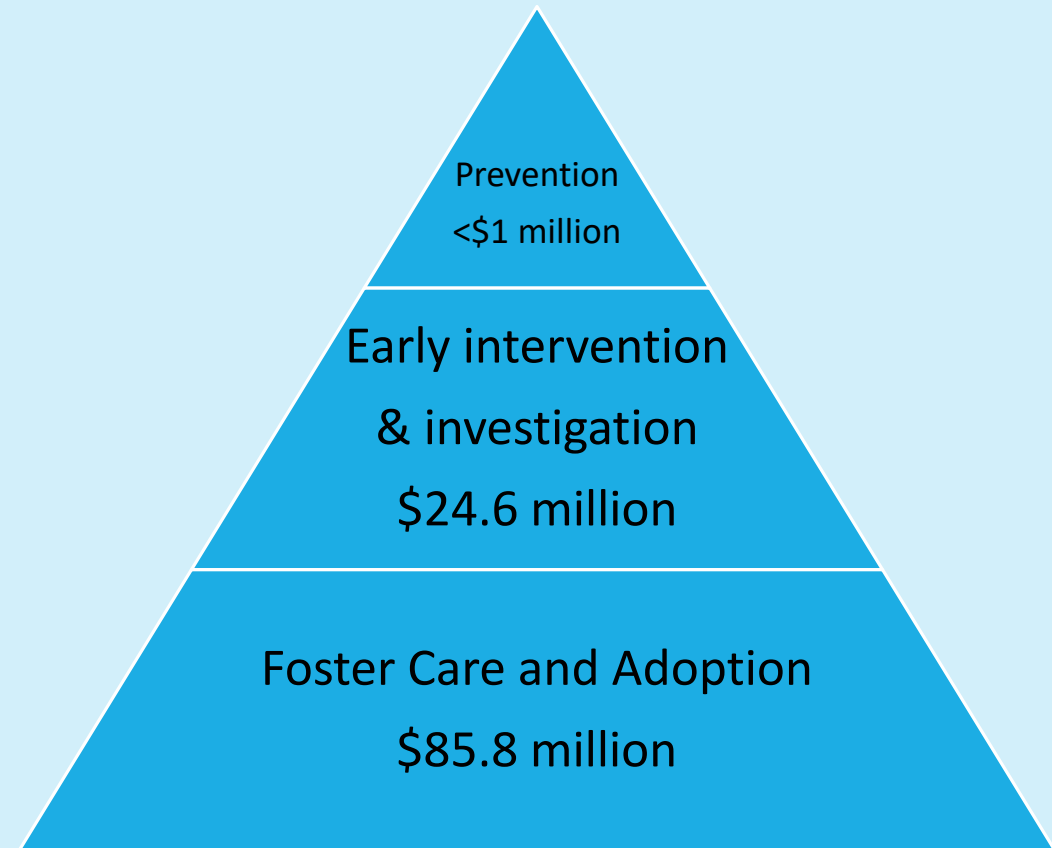
- have a prevention and intervention division (Section 9-2A-4 NMSA 1978);
- develop standards of service within the department that focus on prevention, monitoring, and outcomes (Section 9-2A-8(D)); and
- implement prevention and early intervention as a departmental focus (Section 9-2A-8(J));

However, CYFD Protective Services resources concentrated on the “back end” of the system.

NM CYFD Protective Services



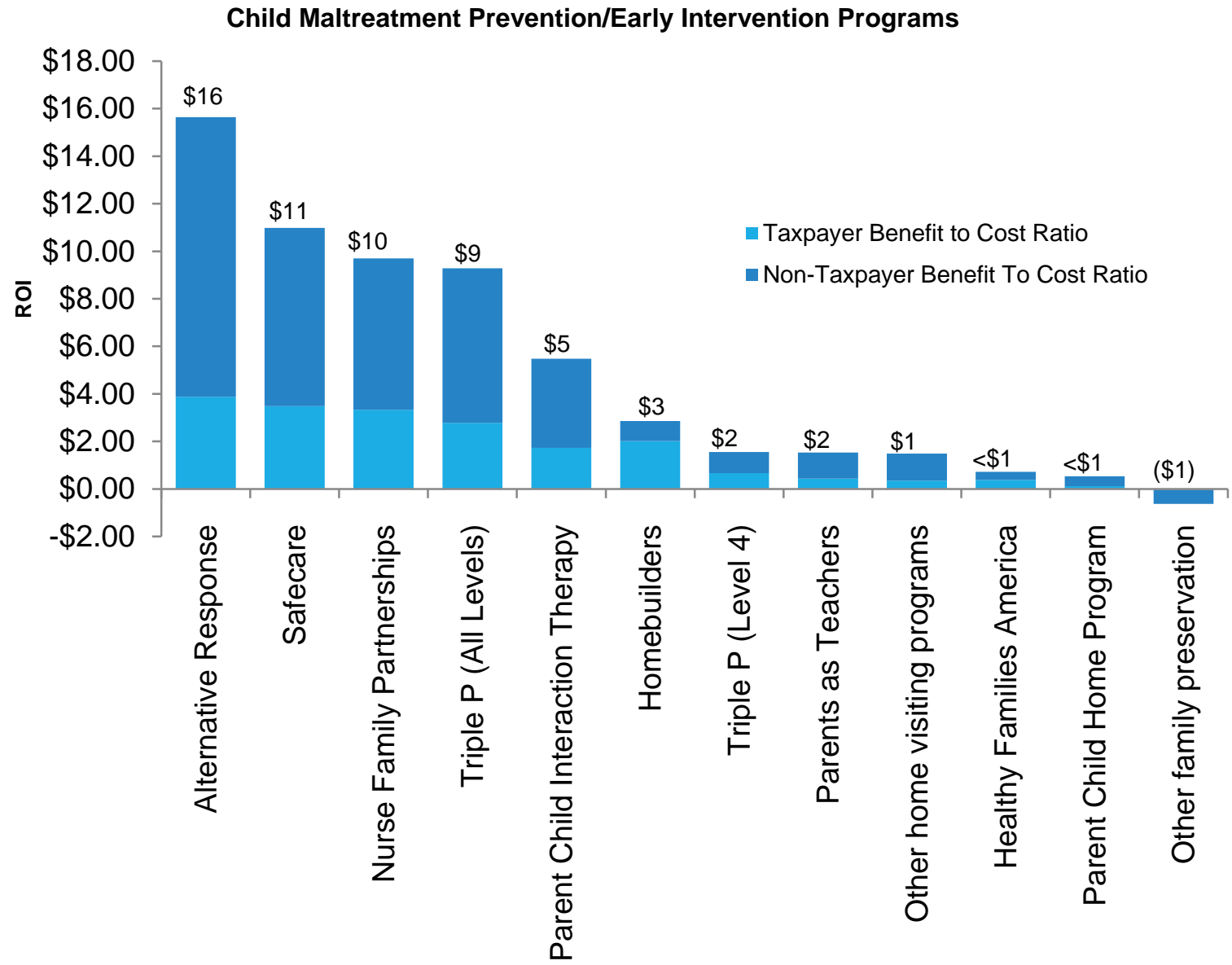
2018 CYFD Protective Services Child Welfare Statistics



2018 CYFD Protective Services Child Welfare Spending

What works...

- Strategic investments, along with careful attention to implementation and performance monitoring, could help the state achieve reductions in child maltreatment and improve outcomes for New Mexico families.
- CYFD has a number of options to boost spending to evidence-based prevention programs.

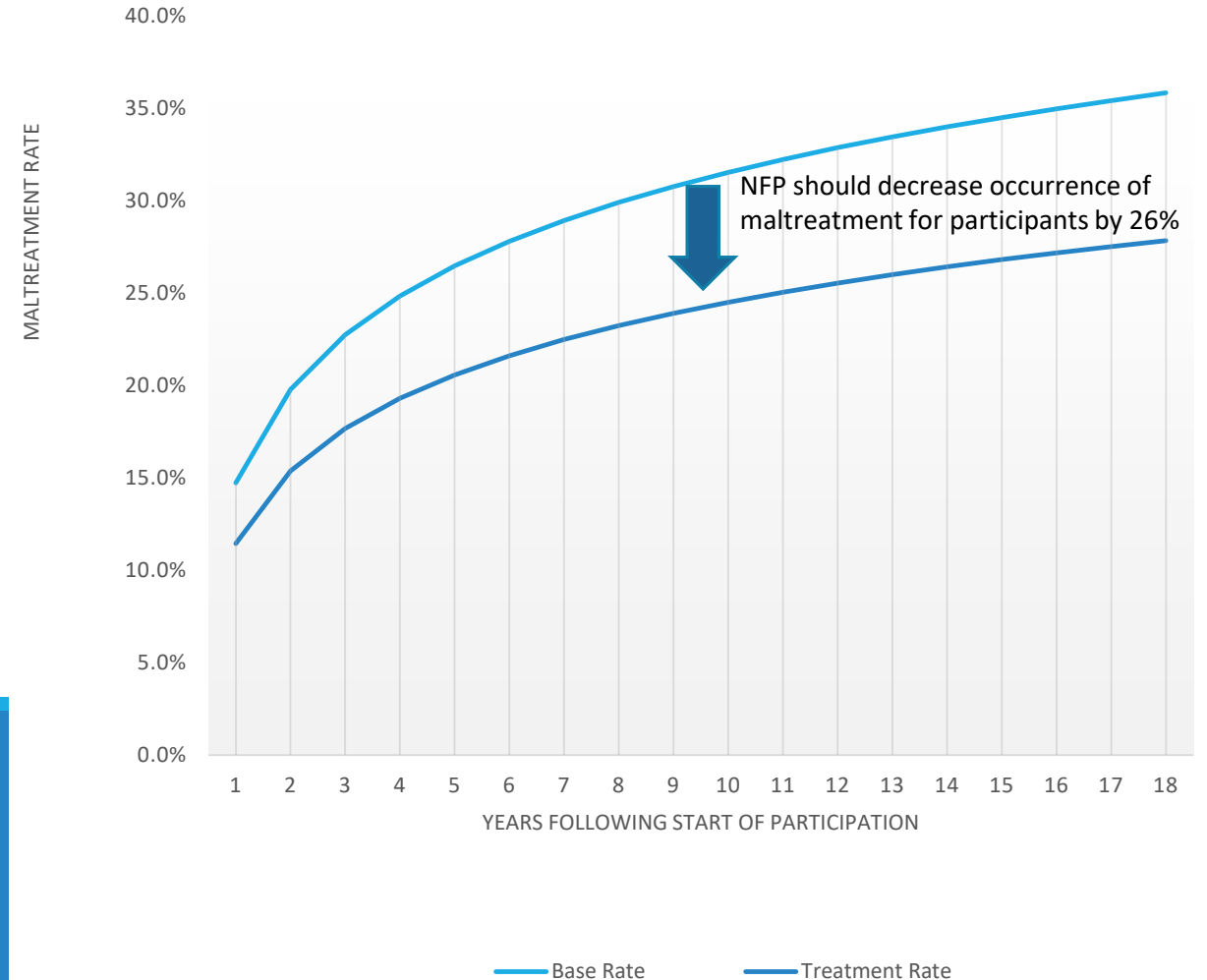


Source: LFC Results First

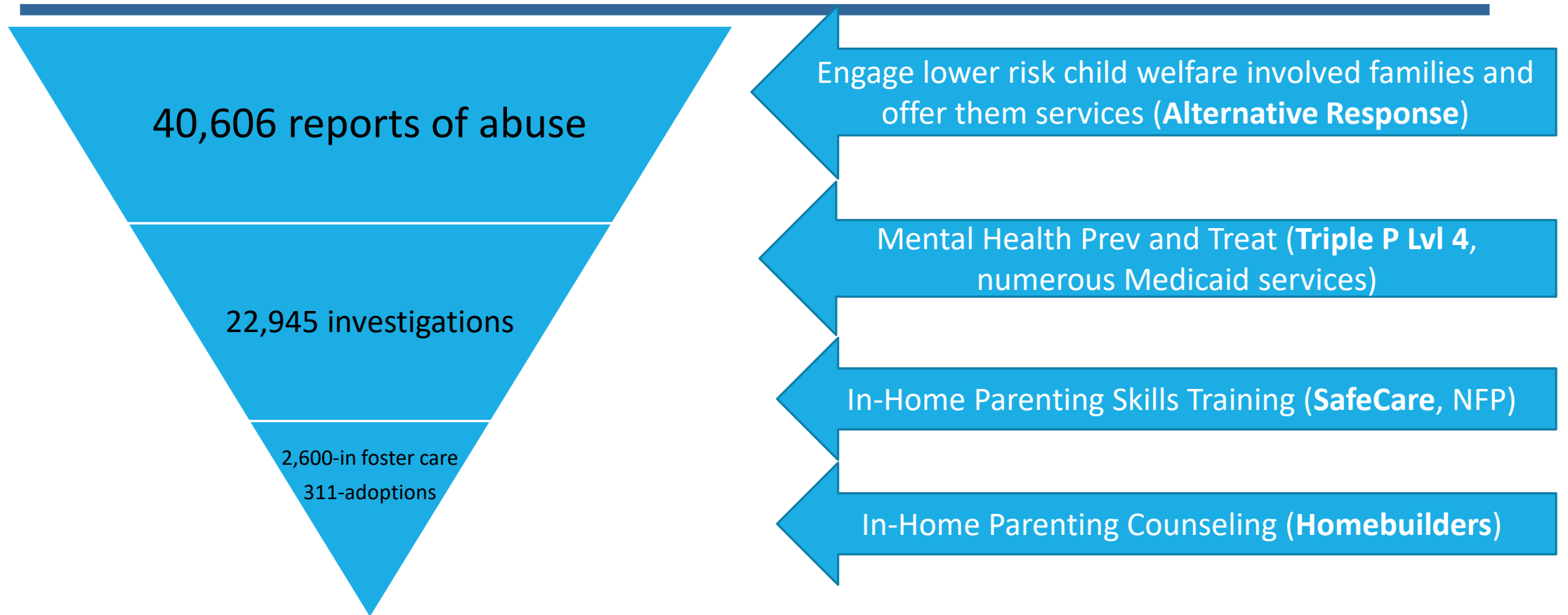
Business as usual will not move the needle, but we know what works

- Programs proven to work have lasting impacts
- Without this or other interventions, the state continues on the same path.
- However, implementation of evidence-based programs such as nurse-family partnerships should reduce the maltreatment rate.
- HSD is piloting Medicaid funded home visiting including NFP which should start in Jan 2019.

Maltreatment Rate
(Business as Usual vs Nurse Family Partnership Intervention)



NM CYFD Protective Services



2018 CYFD Protective Services Child
Welfare Statistics

What works...

- Strategic investments, along with careful attention to implementation and performance monitoring, could help the state achieve reductions in child maltreatment and improve outcomes for New Mexico families.
- CYFD has a number of options to boost spending to evidence-based prevention programs.

Program	Description	Notes	Taxpayer ROI	Total ROI
Alternative Response	System of responding to referrals to better assess strengths and needs of lower risk families and connect them to services	Piloted by CYFD 2005-2007 with good results	4 to 1	16 to 1
Triple P (Level 4)	Individual-based parenting program to help deal with challenging child behavior	Discontinued because of cost	2.8 to 1	9 to 1
SafeCare	HV program teaching parents skills to avoid maltreatment	REC IX reports entering into a \$1.1 million contract for SafeCare	3.5 to 1	11 to 1
Homebuilders	Short term, in-home, intensive family-based services targeted at families facing child removal	Discontinued to serve more children though non-evidence based model	2 to 1	3 to 1
Source: NM LFC				

Hypothetical Scenario...

- The new CYFD Cabinet Secretary decides to implement the four programs on the right at different intensities
- Alternative response might be best piloted in select urban counties then expanded, whereas Homebuilders could be implemented system wide
- The CYFD Cabinet Secretary uses existing resources to measure how programs are being implemented and outcomes (e.g. maltreatment, recurrence of maltreatment, foster care entry, etc)

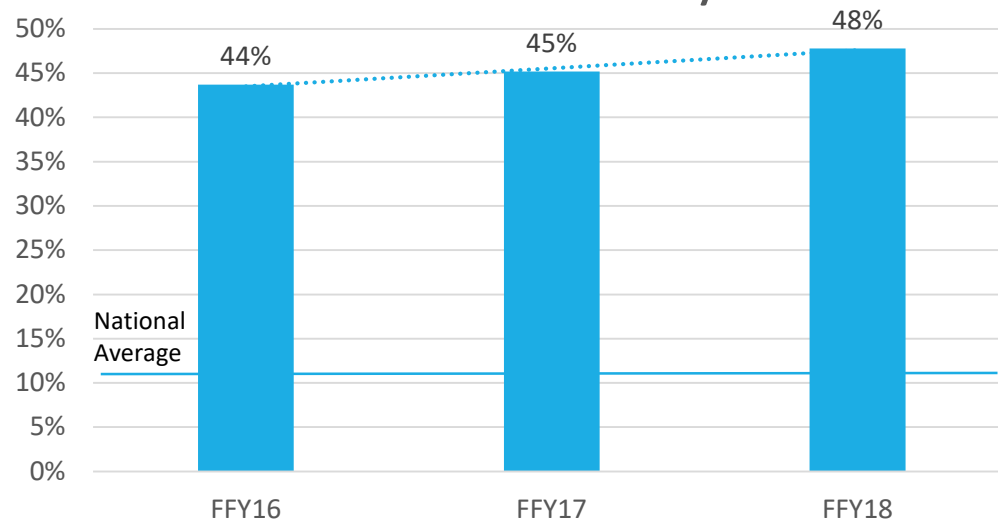
Program	Implementation Strategy	Cost Per Unit	Total Units	Total Projected Cost
Alternative Response	Pilot in Bernalillo County	\$98 (WSIPP)	14,139 reports received in BernCo	\$1.4 million
Triple P (Level 4)	Restore previous funding with potential to expand further	\$1,792 (Casey)	100 families	\$1.8 million
SafeCare	TBD-CYFD has issued request for proposals supporting a targeted home visiting strategy that includes SafeCare	\$1,950 (Casey)	100 families	\$2 million
Homebuilders	Implement system-wide replacing current in-home services model	\$3,547 (Casey)	2,000	\$7.1 million (note CYFD currently spends over <u>\$8 million</u> on non-ev based in-home services)

Source: NM LFC

Note: Initial costs may be higher than average costs due to additional funds needed for start up

CYFD Short Stayers

NM percent of children in care that are short stayers



Sources: CYFD & Casey Family Programs

Short stayers mostly comprise of children in custody for less than 48 hours

- Initial removal by law enforcement
- There is a 2 working court day period used to determine whether to file a custody petition
- Short stayers are largely a result of law enforcement removing a child and after further assessment by CYFD, the child is returned home
- Most states have moved to allowing child welfare workers to make removal decisions

Casey Family Programs and CYFD conducted a study of the issue in 2015

- Effect of short stayers include additional costs, and potential for worse outcomes for children
- The report recommended the Legislature authorize CYFD-PS with removal authority

Final Thoughts and Recommendations

Families First Act is another pathway to use IV-E dollars for prevention

The Legislature has asked CYFD to make prevention a focus

The Legislature should consider:

- Creating a legislative framework for CYFD to create an alternative response program
- Asking the new CYFD secretary to reexamine the need for a prevention/early intervention service area as mandated by law
- Note: In 2014 Casey recommended authorizing CYFD Protective Services Workers to have removal authority, if a consideration, the Legislature/CYFD should consider requiring investigators to be licensed social workers

CYFD should:

- Reexamine the need for a prevention/early intervention service area as established by the Legislature
- Reexamine not having licensed social workers acting as investigators
- Engage lower risk child welfare involved families, and connect them with needed evidence-based services before the family is in crisis
- Move from the current in-home services model to an evidence-based model such as Homebuilders
- Use performance management to track implementation and outcomes of programs



For More Information

Jon Courtney, PhD, Program Evaluation Manager

Kelly Klundt, Fiscal Analyst

Charles Sallee, Deputy Director

325 Don Gaspar – Suite 101

Santa Fe, NM 87501

505-986-4550

Extra Slides

Historically, CYFD Protective Services has not front loaded the system for prevention

NM-Cost of Child Maltreatment (approximately \$138 million)

Protective Services Administrative Overhead: 20% (\$27.6 million)

Includes administrative staff, training, travel, rent and other capital costs

*Note totals do not include domestic violence contracts or grants to tribes.

Prevention Services

- **Less than 1%**
- CYFD was contracting services with Triple P and Parents as Teachers to serve 400 children

Intake and Investigation

- **\$16.4 (11.9%)**
- 40,606 reports and 22,350 investigations of abuse and neglect

Intervention Services

- **\$8.2 (5.9%)**
- In-Home Services serves around 2,000 children per year.

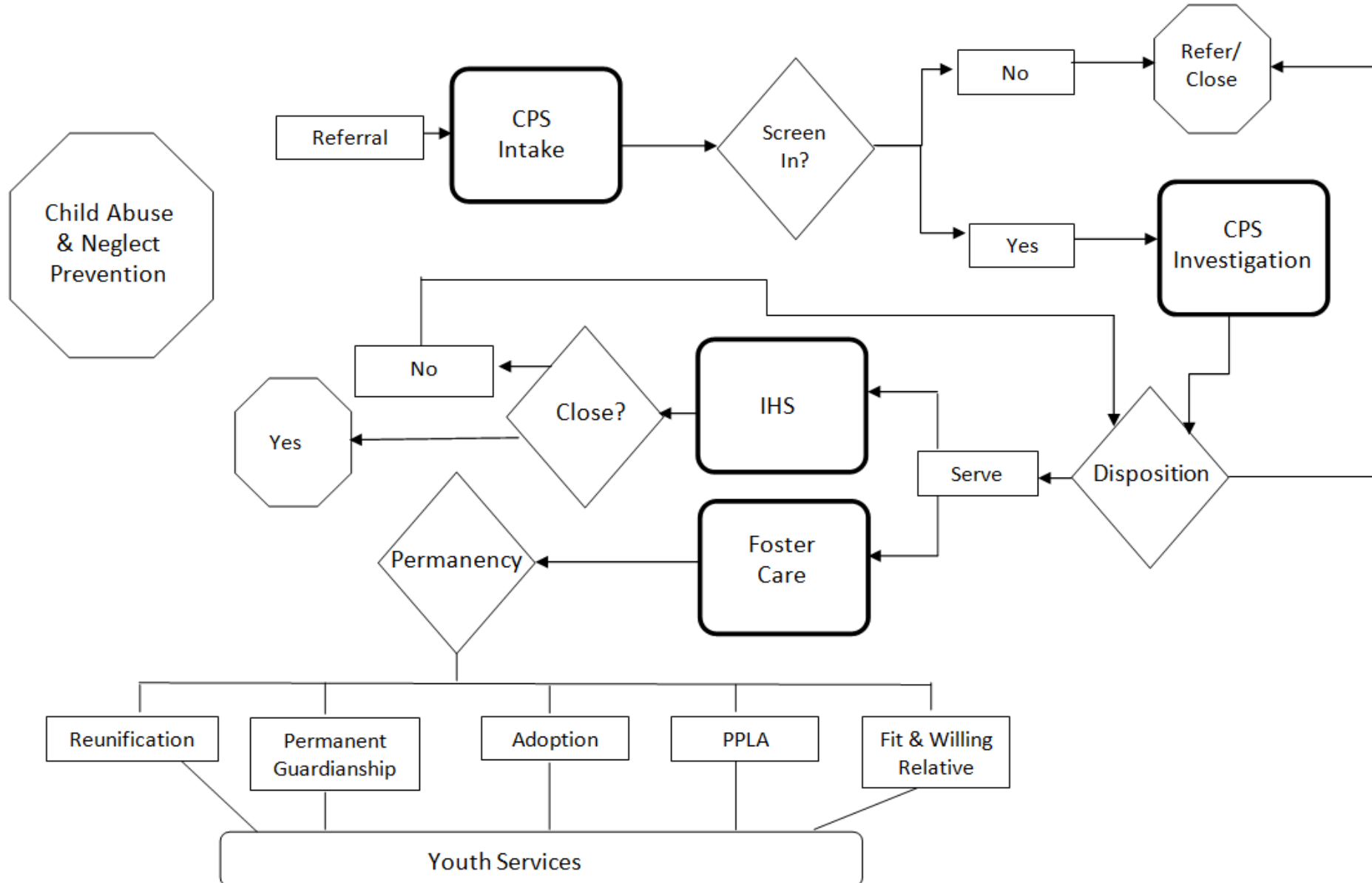
Foster Care Services

- **\$54.2 (39.3%)**
- Around 2,600 children in care

Adoption Services

- **\$31.6 (22.9%)**
- Around 300 children adopted each year

Protective Services Service Continuum



Alternative Response

Alternative Response (Differential Response): A system of responding to referrals that is an alternative to a traditional investigation. If there are no imminent concerns about a child's safety, a family assessment is conducted, with the goal of engaging a family to determine strengths and needs and plan for the future.

Alternative response was run as a pilot in New Mexico from 2005-2007:

- Families who accepted assessment services had a lower rate of repeat maltreatment, had fewer children removed and placed in foster care, and had almost half as many repeat reports compared with families who declined services.
- Families that did re-enter the system after accepting assessment services had their children returned to them more often after the children were placed on a 48-hour hold, meaning that fewer children were removed from their homes and put into costly foster care.
- The Child Abuse Prevention and Treatment Act of 2010 requires states to include in their state plan "triage procedures, including the use of differential response, for the appropriate referral of a child not at risk of imminent harm to a community organization or voluntary preventive service."